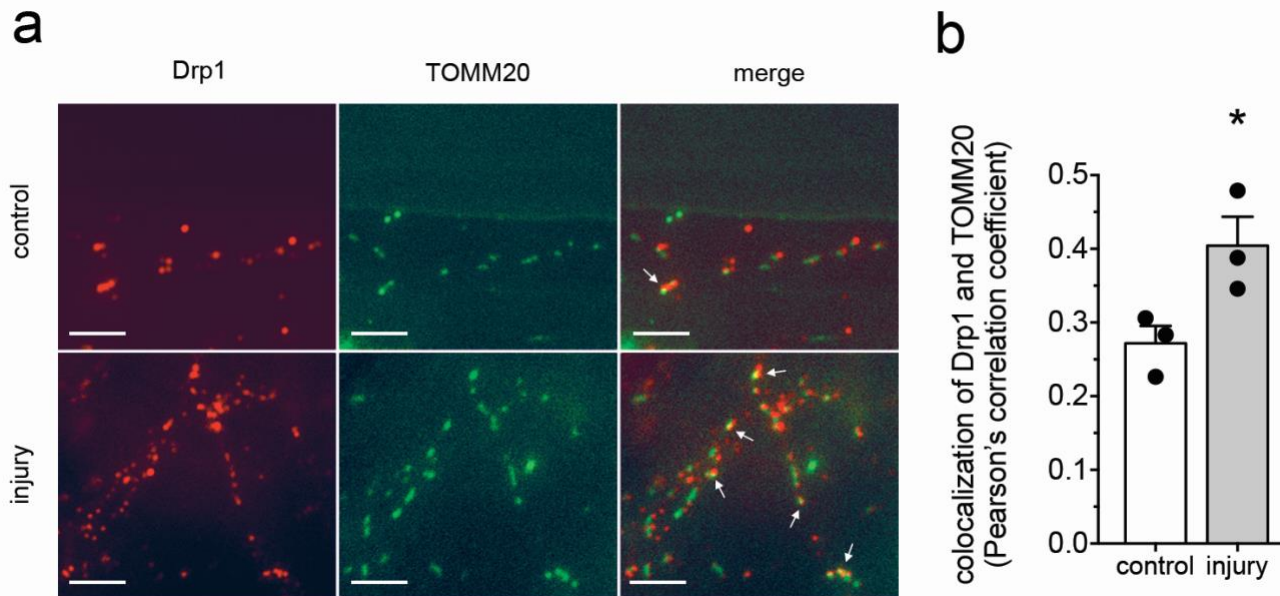


Supplementary Figure S1



**Supplementary Fig. S1** Colocalization analysis of Drp1 and TOMM20 immunostaining in control and injury conditions. Axons protruding from hippocampal organotypic slices cultured in microfluidic devices were injured with application of 15% strain and fixed 5min post-injury. **a.** Representative fluorescence micrographs displaying Drp1 and TOMM20 immunostaining in axonal processes in control and injury conditions. White arrows indicate regions of colocalization. **b.** Analysis shows increased colocalization of Drp1 and TOMM20 following axonal stretch injury. Results obtained from three microfluidic device cultures per condition (separate donor animals used for each device),  $n = 3$ . \* $p < 0.05$  as determined by Student's  $t$ -test. Error bars are s.e.m. Scale bars,  $5\mu\text{m}$ .