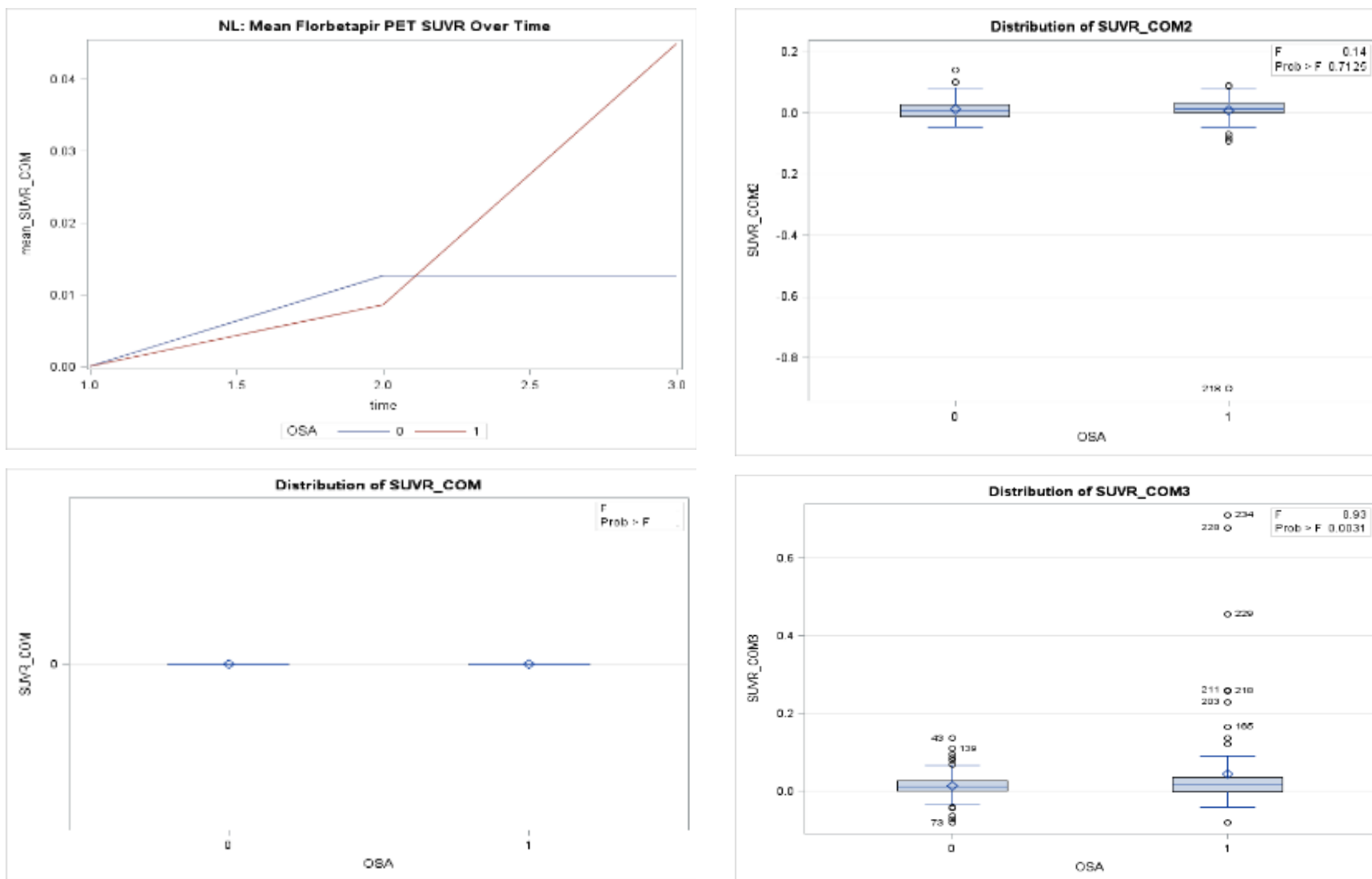
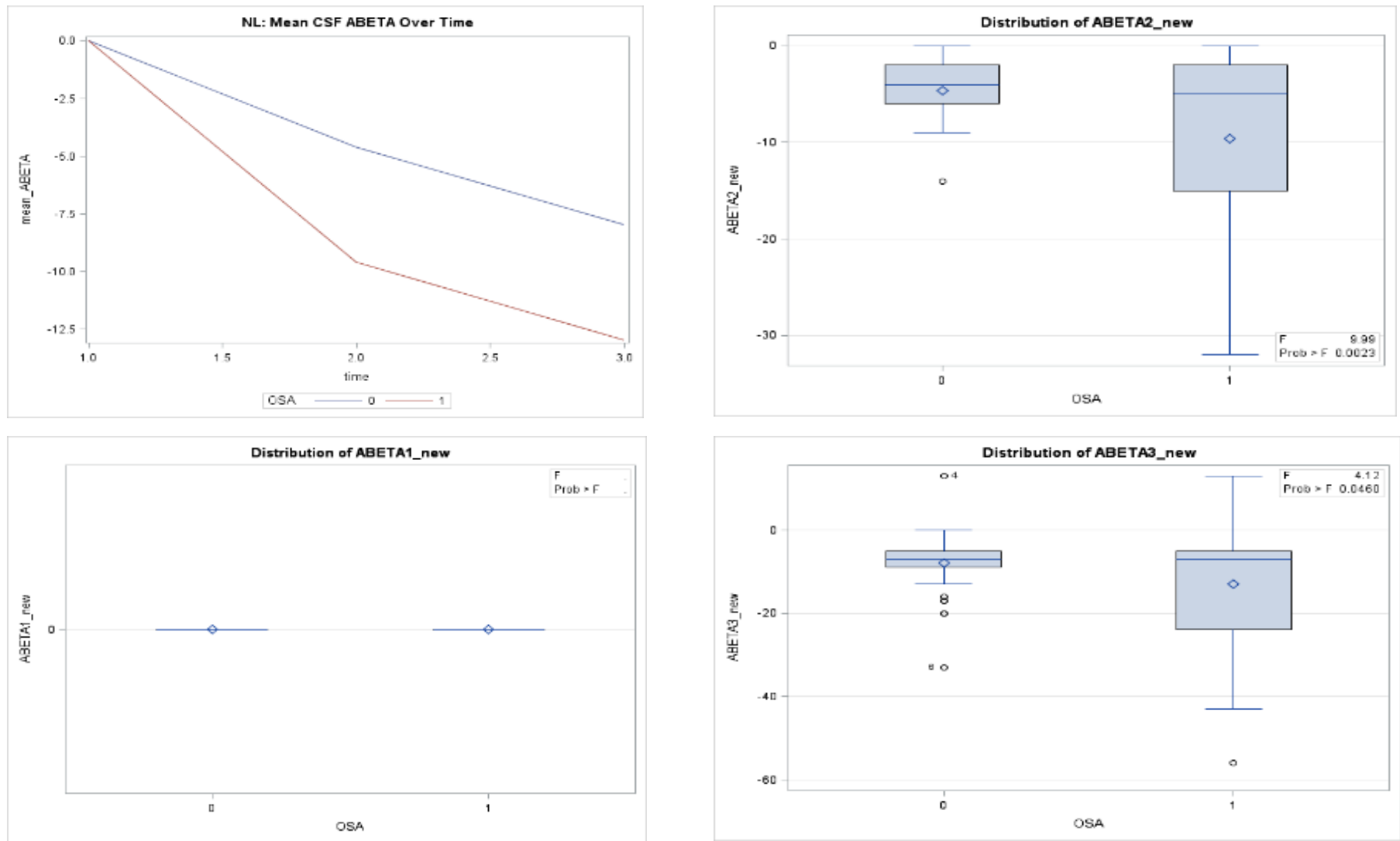


Supplemental Figure 2a: MANOVA results showing mean change differences in AD-biomarker values over time by OSA status (Cognitive Normal –NL Florbetapir)



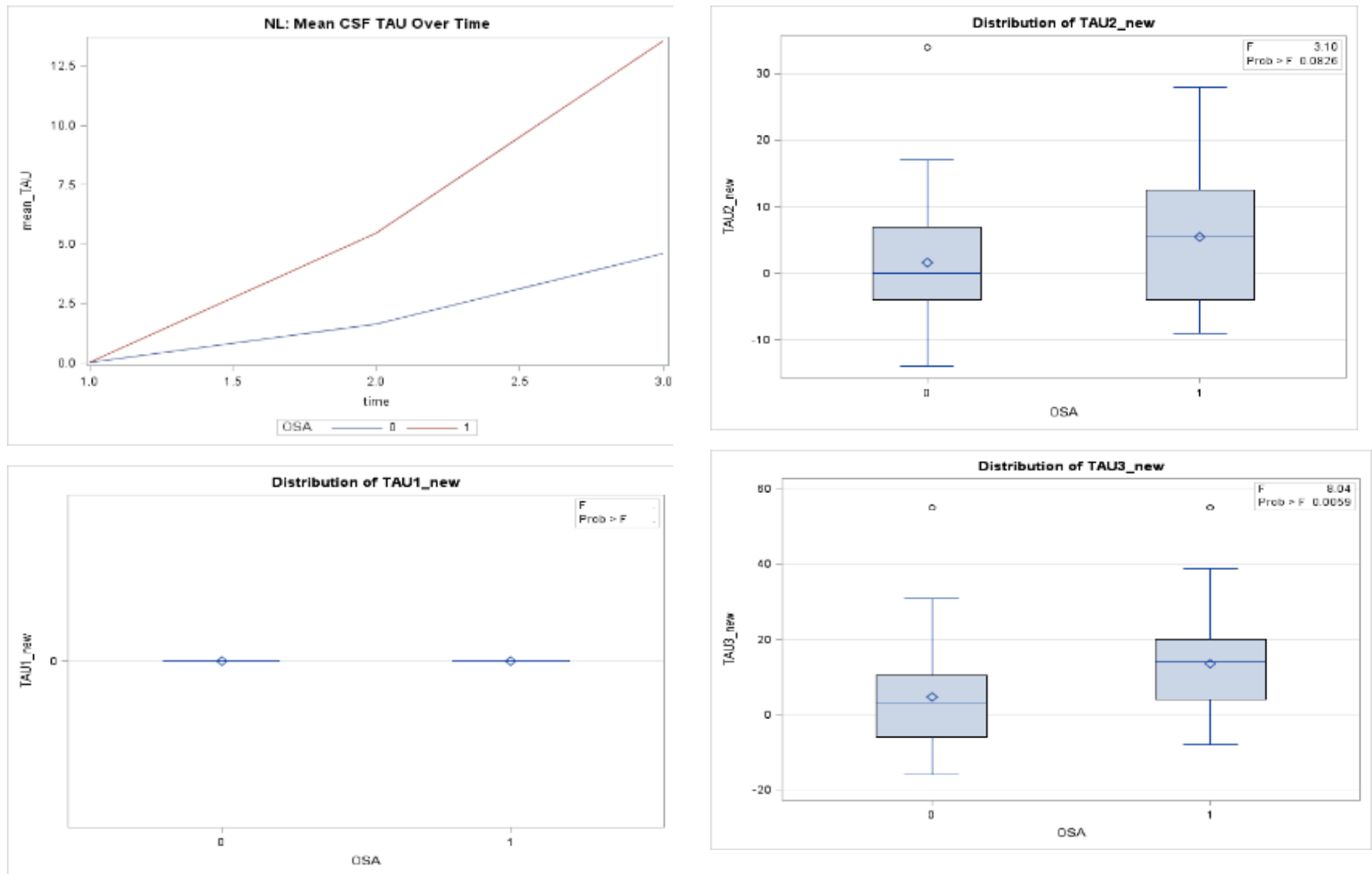
Supplemental Figure 2a: The MANOVA (Multivariate Analysis of Variance) analysis allowed assessment of whether mean changes in AD-biomarker levels were parallel across OSA-groups, whether the mean change in biomarker-data increased/decreased over time, and whether there are significant differences in mean biomarker-data across OSA-groups for all time-points. NL: Cognitive Normal; MCI: Mild Cognitive Impairment; AD: Alzheimer's disease; **SUVR**: Standard Uptake Value Ratio of Brain Florbetapir; **SUVR_COM**, **SUVR_COM2** and **SUVR_COM3**: Mean change Brain Florbetapir Uptake Value at time 1, 2 & 3 respectively; **CSF**: Cerebrospinal fluid, **ABETA**: amyloid beta; **ABETA1_new**, **ABETA2_new**, **ABETA3_new**: Mean change CSF Aβ42 at time 1, 2 & 3 respectively. **TAU1_new**, **TAU2_new**, **TAU3_new**: Mean change TAU at time 1, 2 & 3 respectively; **PTAU1_new**, **PTAU2_new**, **PTAU3_new**: Mean change phosphorylated TAU at time 1, 2 & 3 respectively. Time 1 is baseline; Time 1, 2 & 3 values obtained by subtracting baseline data at each time point

Supplemental Figure 2a: MANOVA results showing mean change differences in AD-biomarker values over time by OSA status (Cognitive Normal –NL CSF ABETA)



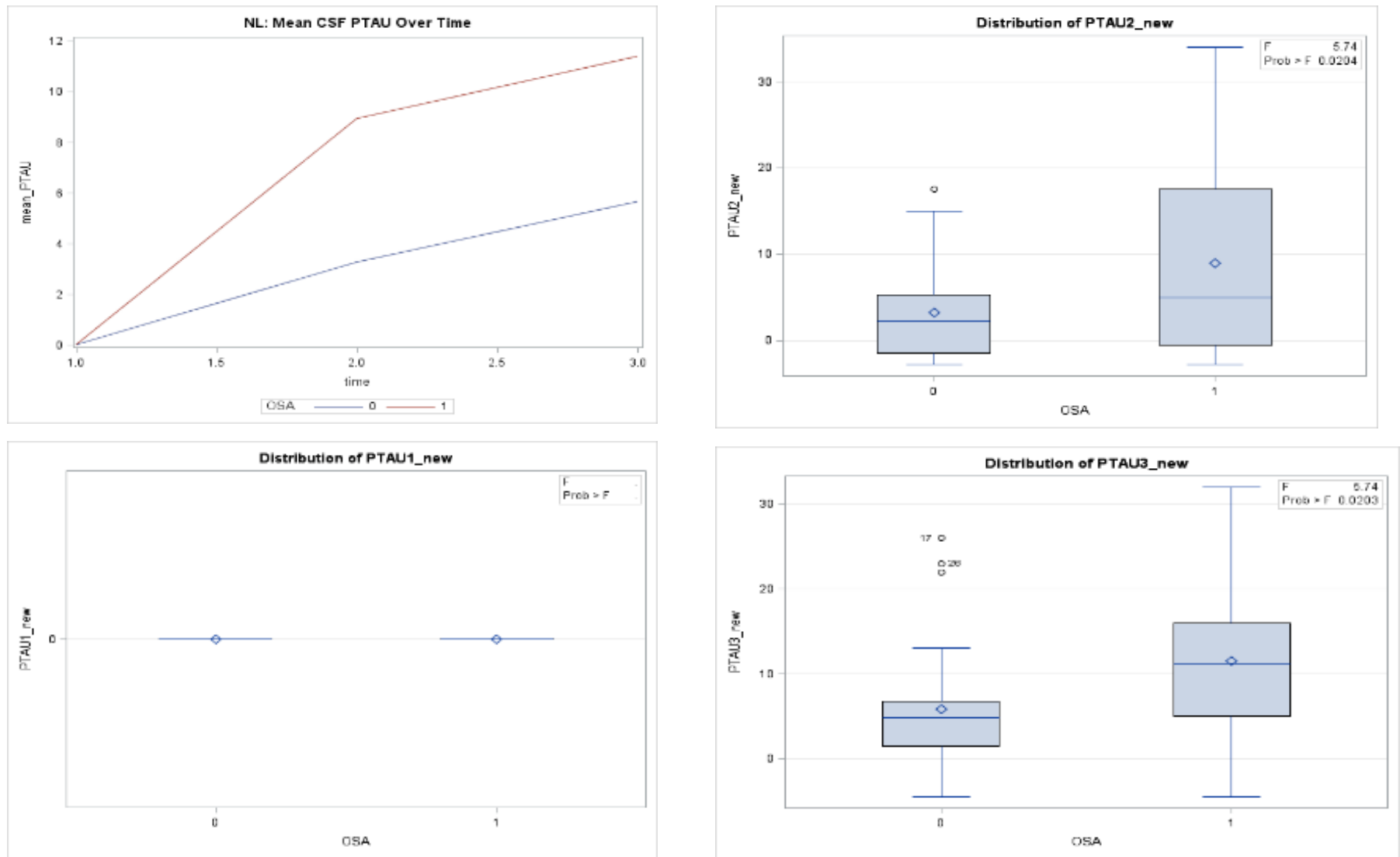
Supplemental Figure 2a: The MANOVA (Multivariate Analysis of Variance) analysis allowed assessment of whether mean changes in AD-biomarker levels were parallel across OSA-groups, whether the mean change in biomarker-data increased/decreased over time, and whether there are significant differences in mean biomarker-data across OSA-groups for all time-points. NL: Cognitive Normal; MCI: Mild Cognitive Impairment; AD: Alzheimer's disease; SUVR: Standard Uptake Value Ratio of Brain Florbetapir; SUVR_COM, SUVR_COM2 and SUVR_COM3: Mean change Brain Florbetapir Uptake Value at time 1, 2 & 3 respectively; CSF: Cerebrospinal fluid, ABETA: amyloid beta; ABETA1_new, ABETA2_new, ABETA3_new: Mean change CSF A β 42 at time 1, 2 & 3 respectively. TAU1_new, TAU2_new, TAU3_new: Mean change TAU at time 1, 2 & 3 respectively; PTAU1_new, PTAU2_new, PTAU3_new: Mean change phosphorylated TAU at time 1, 2 & 3 respectively. Time 1 is baseline; Time 1, 2 & 3 values obtained by subtracting baseline data at each time point

Supplemental Figure 2a: MANOVA results showing mean change differences in AD-biomarker values over time by OSA status (Cognitive Normal –NL CSF TTAU)



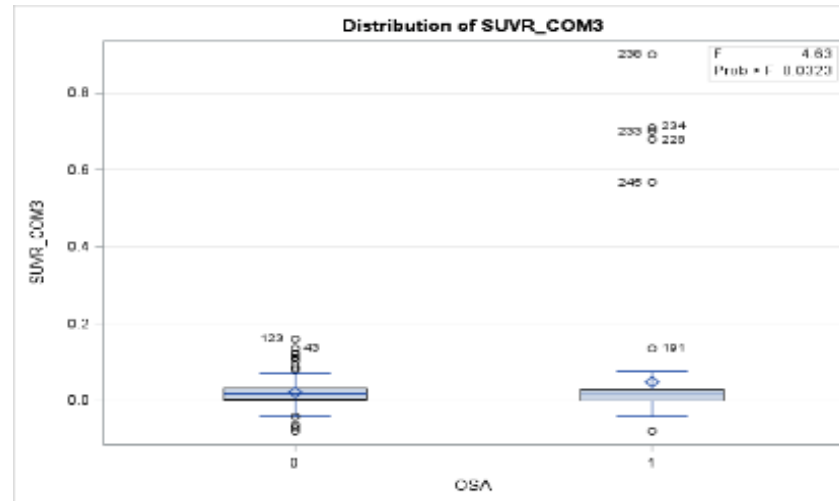
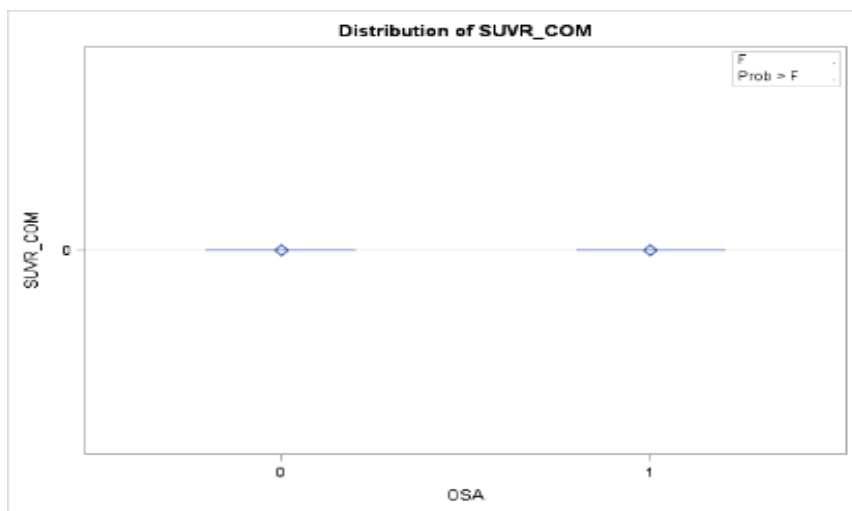
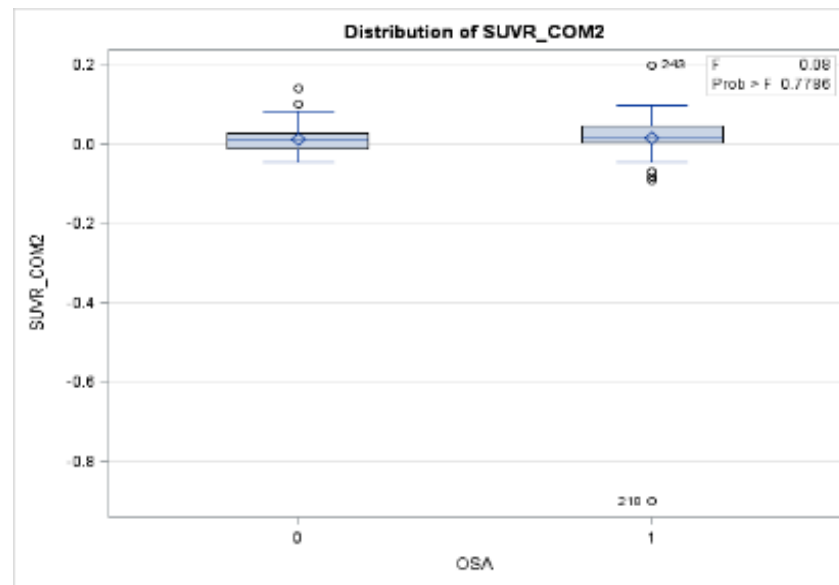
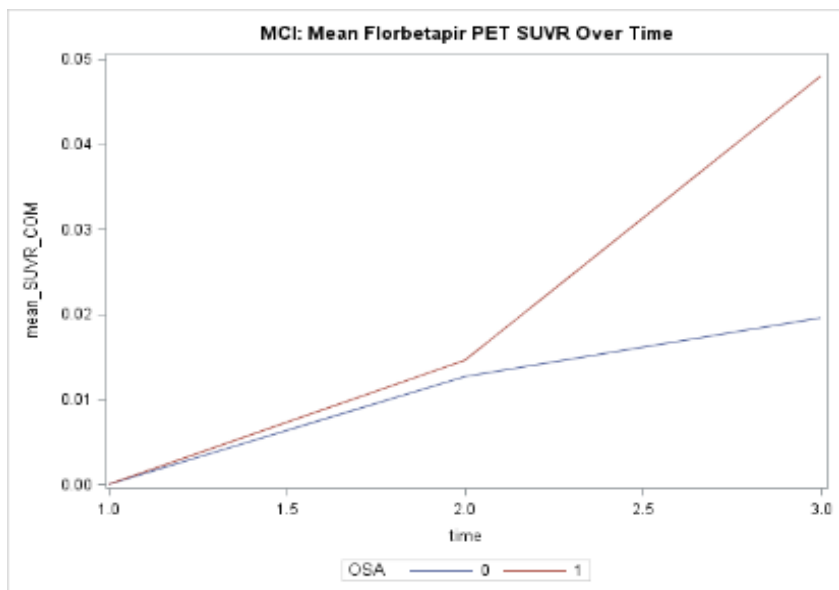
Supplemental Figure 2a: The MANOVA (Multivariate Analysis of Variance) analysis allowed assessment of whether mean changes in AD-biomarker levels were parallel across OSA-groups, whether the mean change in biomarker-data increased/decreased over time, and whether there are significant differences in mean biomarker-data across OSA-groups for all time-points. NL: Cognitive Normal; MCI: Mild Cognitive Impairment; AD: Alzheimer's disease; SUVR: Standard Uptake Value Ratio of Brain Florbetapir; SUVR_COM, SUVR_COM2 and SUVR_COM3: Mean change Brain Florbetapir Uptake Value at time 1, 2 & 3 respectively; CSF: Cerebrospinal fluid, ABETA: amyloid beta; ABETA1_new, ABETA2_new, ABETA3_new: Mean change CSF A β 42 at time 1, 2 & 3 respectively. TAU1_new, TAU2_new, TAU3_new: Mean change TAU at time 1, 2 & 3 respectively; PTAU1_new, PTAU2_new, PTAU3_new: Mean change phosphorylated TAU at time 1, 2 & 3 respectively. Time 1 is baseline; Time 1, 2 & 3 values obtained by subtracting baseline data at each time point

Supplemental Figure 2a: MANOVA results showing mean change differences in AD-biomarker values over time by OSA status (Cognitive Normal –NL CSF PTAU)



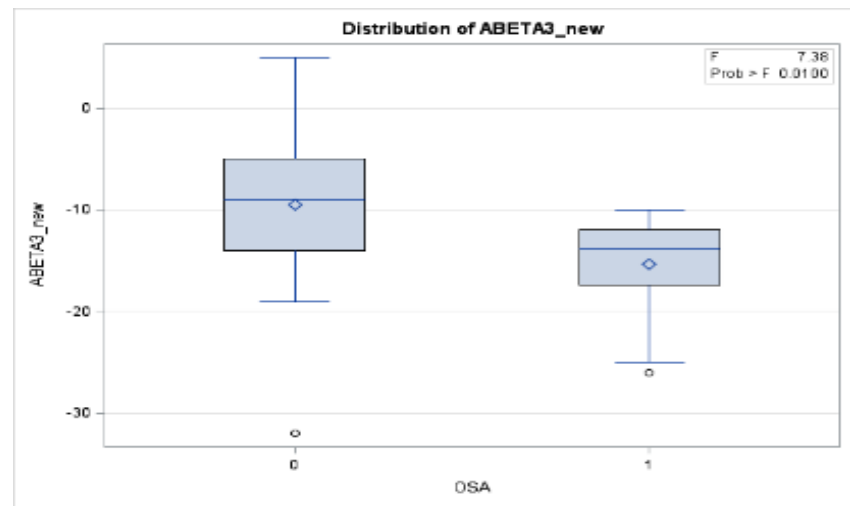
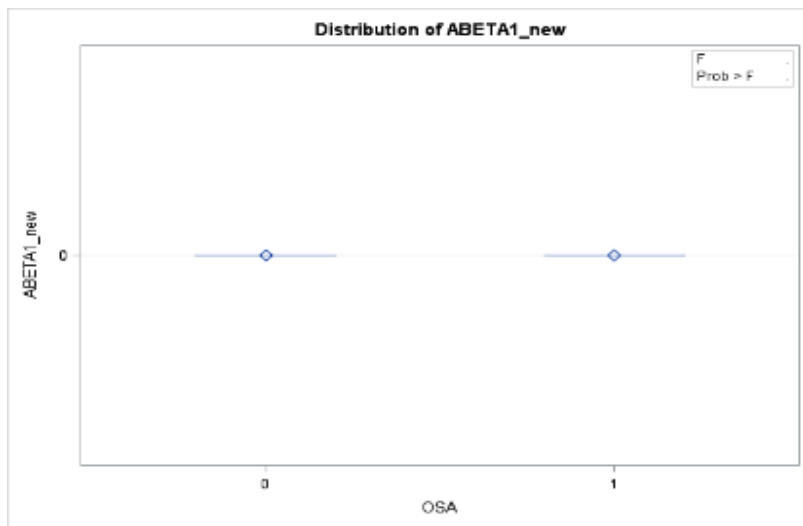
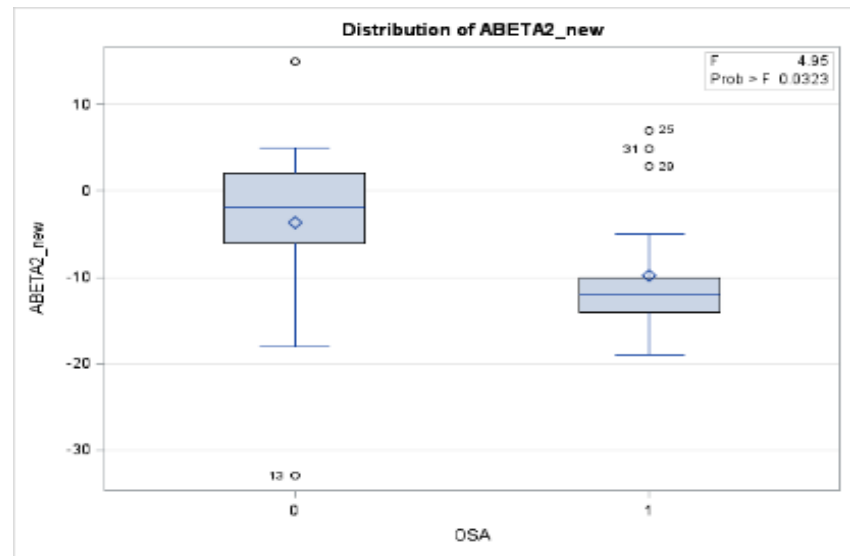
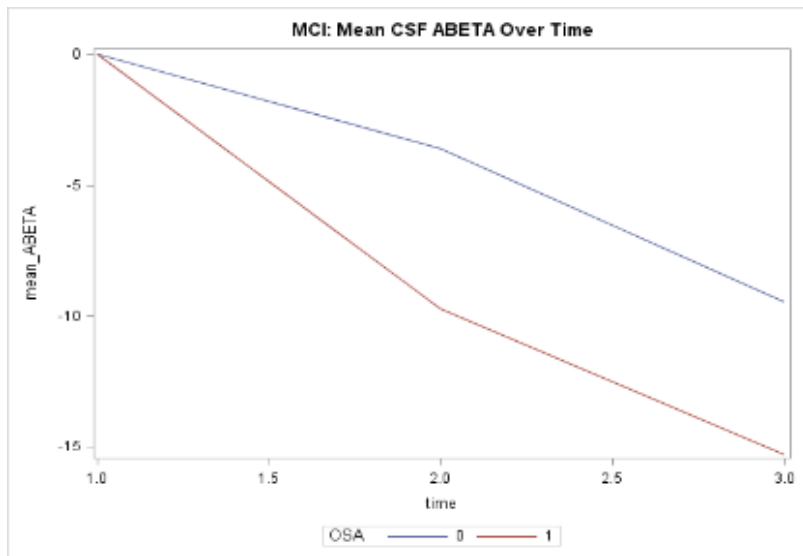
Supplemental Figure 2a: The MANOVA (Multivariate Analysis of Variance) analysis allowed assessment of whether mean changes in AD-biomarker levels were parallel across OSA-groups, whether the mean change in biomarker-data increased/decreased over time, and whether there are significant differences in mean biomarker-data across OSA-groups for all time-points. NL: Cognitive Normal; MCI: Mild Cognitive Impairment; AD: Alzheimer's disease; SUVR: Standard Uptake Value Ratio of Brain Florbetapir; SUVR_COM, SUVR_COM2 and SUVR_COM3: Mean change Brain Florbetapir Uptake Value at time 1, 2 & 3 respectively; CSF: Cerebrospinal fluid, ABETA: amyloid beta; ABETA1_new, ABETA2_new, ABETA3_new: Mean change CSF A β 42 at time 1, 2 & 3 respectively. TAU1_new, TAU2_new, TAU3_new: Mean change TAU at time 1, 2 & 3 respectively; PTAU1_new, PTAU2_new, PTAU3_new: Mean change phosphorylated TAU at time 1, 2 & 3 respectively. Time 1 is baseline; Time 1, 2 & 3 values obtained by subtracting baseline data at each time point

Supplemental Figure 2b: MANOVA results showing mean change differences in AD-biomarker values over time by OSA status (Mild Cognitive Impairment– MCI – Florbetapir)



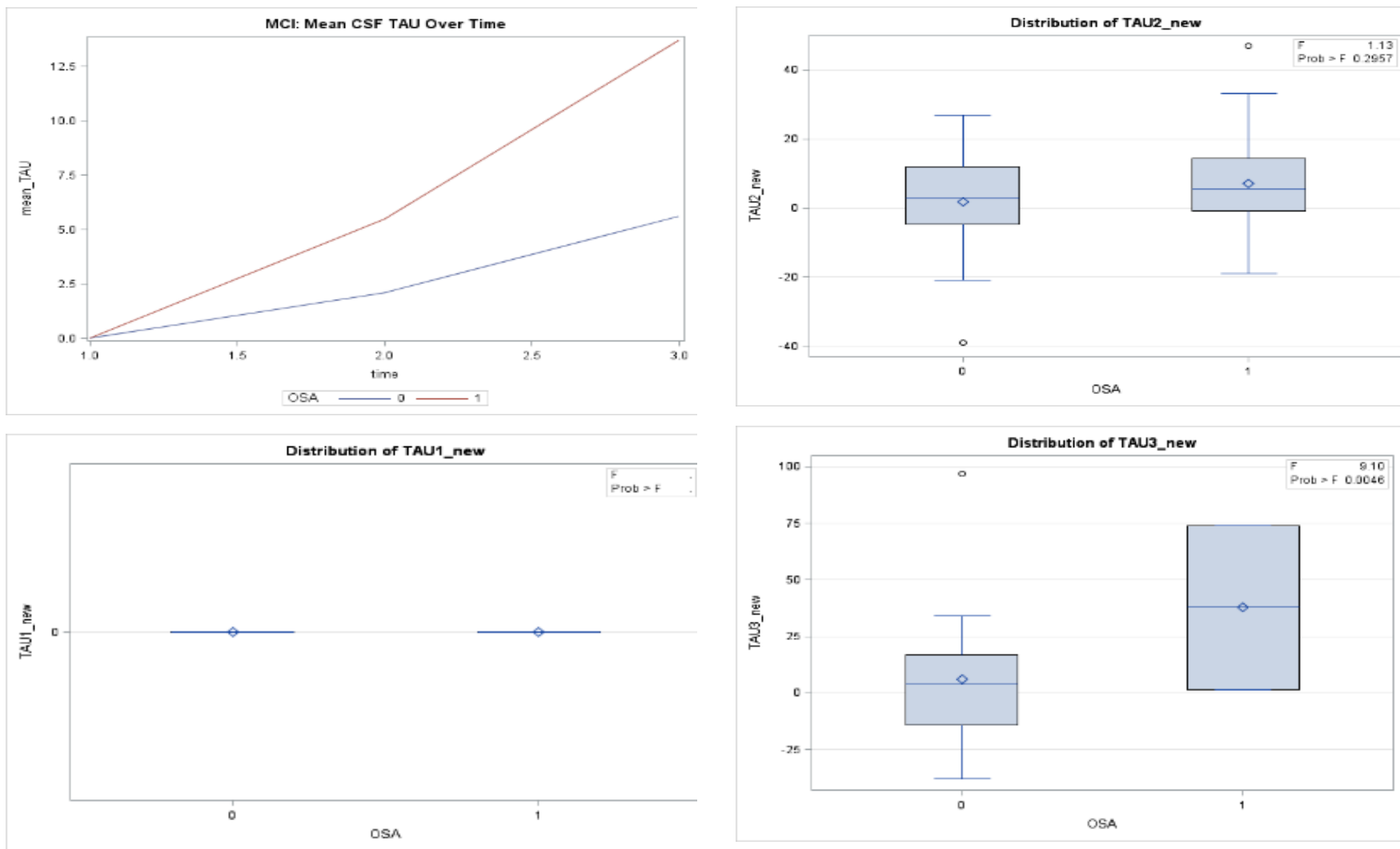
Supplemental Figure 2b: The MANOVA (Multivariate Analysis of Variance) analysis allowed assessment of whether mean changes in AD-biomarker levels were parallel across OSA-groups, whether the mean change in biomarker-data increased/decreased over time, and whether there are significant differences in mean biomarker-data across OSA-groups for all time-points. NL: Cognitive Normal; MCI: Mild Cognitive Impairment; AD: Alzheimer’s disease; **SUVR**: Standard Uptake Value Ratio of Brain Florbetapir; **SUVR_COM**, **SUVR_COM2** and **SUVR_COM3**: Mean change Brain Florbetapir Uptake Value at time 1, 2 & 3 respectively; **CSF**: Cerebrospinal fluid, **ABETA**: amyloid beta; **ABETA1_new**, **ABETA2_new**, **ABETA3_new**: Mean change CSF Aβ42 at time 1, 2 & 3 respectively. **TAU1_new**, **TAU2_new**, **TAU3_new**: Mean change TAU at time 1, 2 & 3 respectively; **PTAU1_new**, **PTAU2_new**, **PTAU3_new**: Mean change phosphorylated TAU at time 1, 2 & 3 respectively. Time 1 is baseline; Time 1, 2 & 3 values obtained by subtracting baseline data at each time point

Supplemental Figure 2b: MANOVA results showing mean change differences in AD-biomarker values over time by OSA status (Mild Cognitive Impairment– MCI – CSF ABETA)



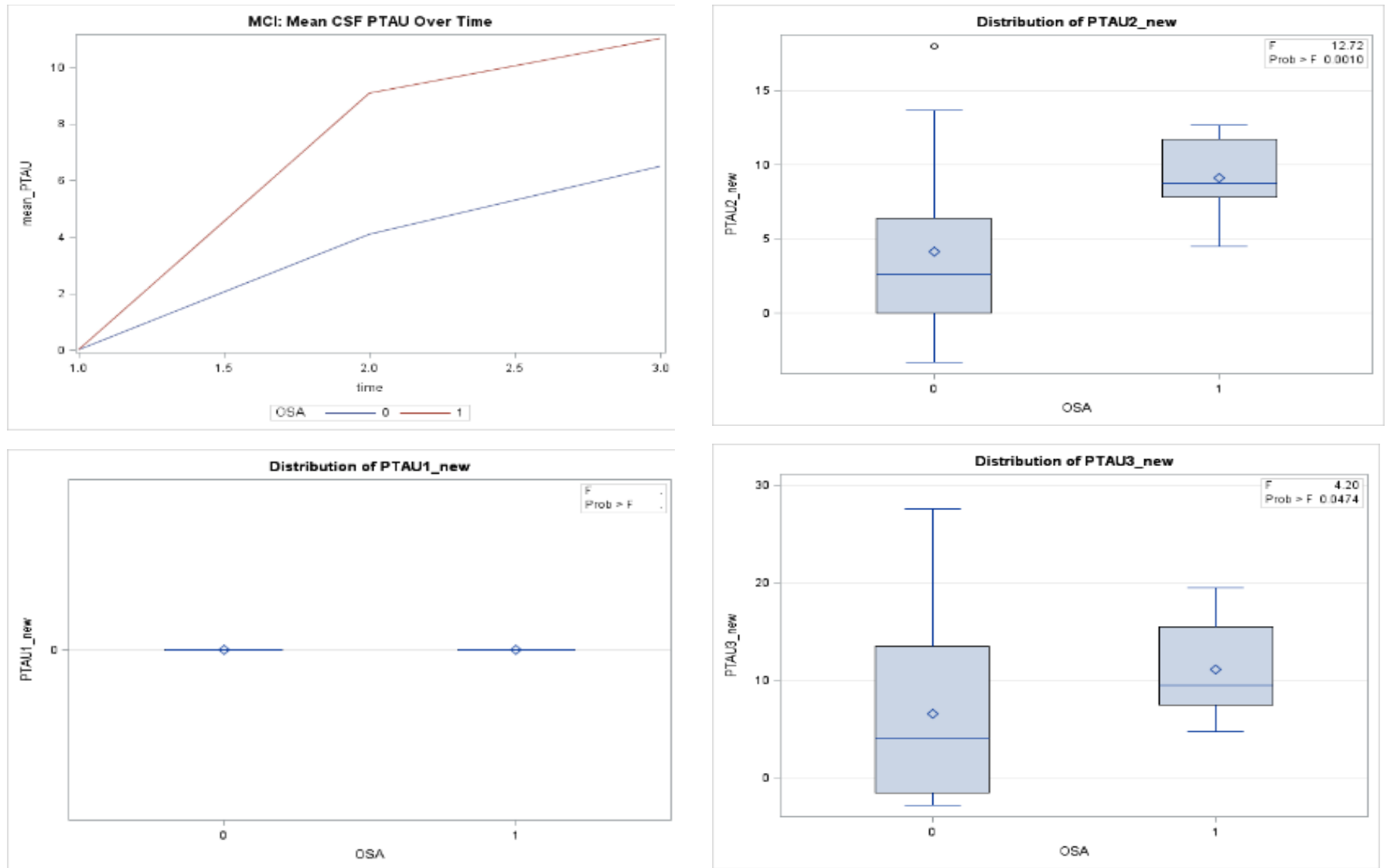
Supplemental Figure 2b: The MANOVA (Multivariate Analysis of Variance) analysis allowed assessment of whether mean changes in AD-biomarker levels were parallel across OSA-groups, whether the mean change in biomarker-data increased/decreased over time, and whether there are significant differences in mean biomarker-data across OSA-groups for all time-points. NL: Cognitive Normal; MCI: Mild Cognitive Impairment; AD: Alzheimer’s disease; SUVR: Standard Uptake Value Ratio of Brain Florbetapir; SUVR_COM, SUVR_COM2 and SUVR_COM3: Mean change Brain Florbetapir Uptake Value at time 1, 2 & 3 respectively; CSF: Cerebrospinal fluid, ABETA: amyloid beta; ABETA1_new, ABETA2_new, ABETA3_new: Mean change CSF Aβ42 at time 1, 2 & 3 respectively. TAU1_new, TAU2_new, TAU3_new: Mean change TAU at time 1, 2 & 3 respectively; PTAU1_new, PTAU2_new, PTAU3_new: Mean change phosphorylated TAU at time 1, 2 & 3 respectively. Time 1 is baseline; Time 1, 2 & 3 values obtained by subtracting baseline data at each time point

Supplemental Figure 2b: MANOVA results showing mean change differences in AD-biomarker values over time by OSA status (Mild Cognitive Impairment– MCI – CSF TTAU)



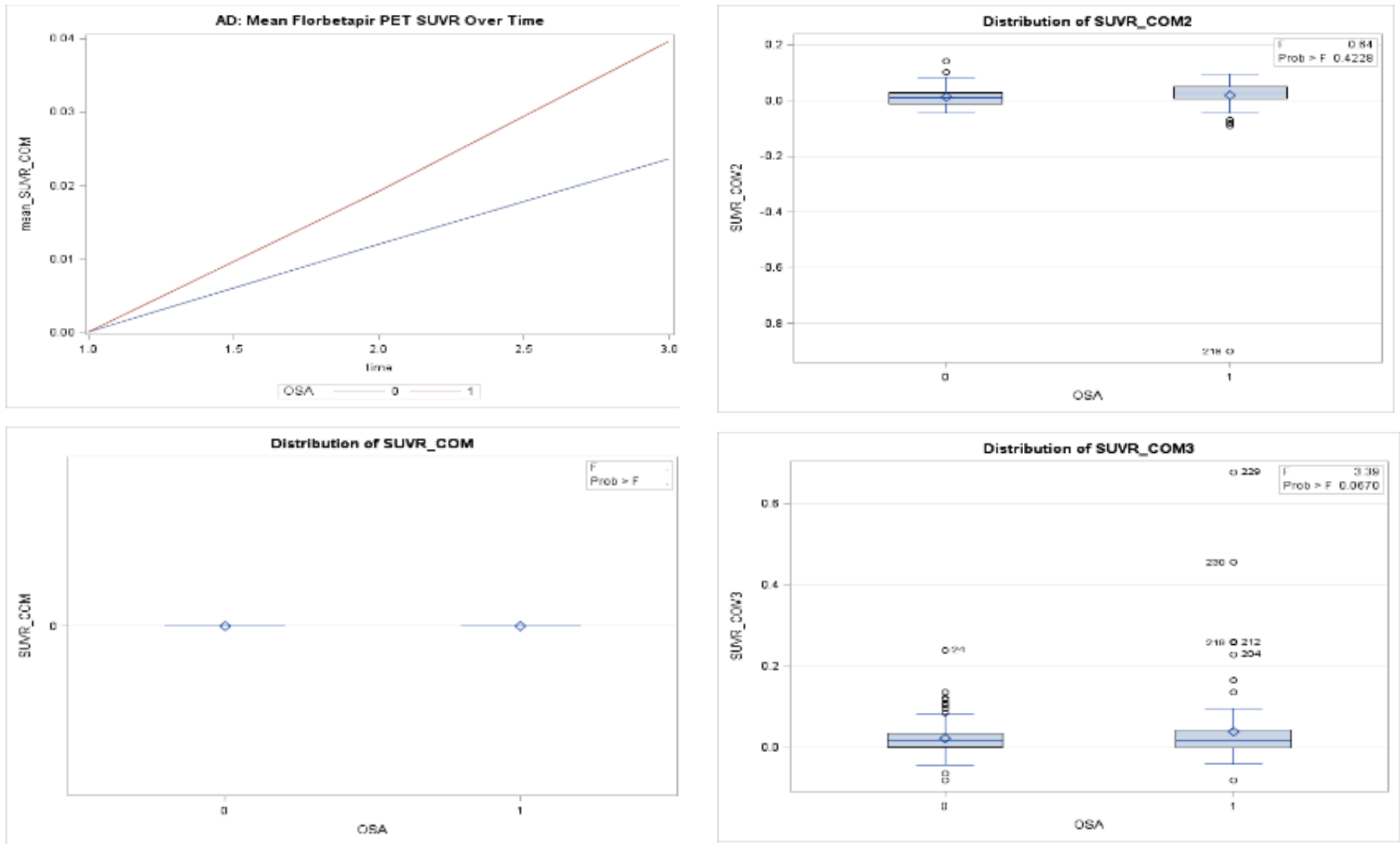
Supplemental Figure 2b: The MANOVA (Multivariate Analysis of Variance) analysis allowed assessment of whether mean changes in AD-biomarker levels were parallel across OSA-groups, whether the mean change in biomarker-data increased/decreased over time, and whether there are significant differences in mean biomarker-data across OSA-groups for all time-points. NL: Cognitive Normal; MCI: Mild Cognitive Impairment; AD: Alzheimer’s disease; **SUVR**: Standard Uptake Value Ratio of Brain Florbetapir; **SUVR_COM**, **SUVR_COM2** and **SUVR_COM3**: Mean change Brain Florbetapir Uptake Value at time 1, 2 & 3 respectively; **CSF**: Cerebrospinal fluid, **ABETA**: amyloid beta; **ABETA1_new**, **ABETA2_new**, **ABETA3_new**: Mean change CSF A β 42 at time 1, 2 & 3 respectively. **TAU1_new**, **TAU2_new**, **TAU3_new**: Mean change TAU at time 1, 2 & 3 respectively; **PTAU1_new**, **PTAU2_new**, **PTAU3_new**: Mean change phosphorylated TAU at time 1, 2 & 3 respectively. Time 1 is baseline; Time 1, 2 & 3 values obtained by subtracting baseline data at each time point

Supplemental Figure 2b: MANOVA results showing mean change differences in AD-biomarker values over time by OSA status (Mild Cognitive Impairment– MCI – CSF PTAU)



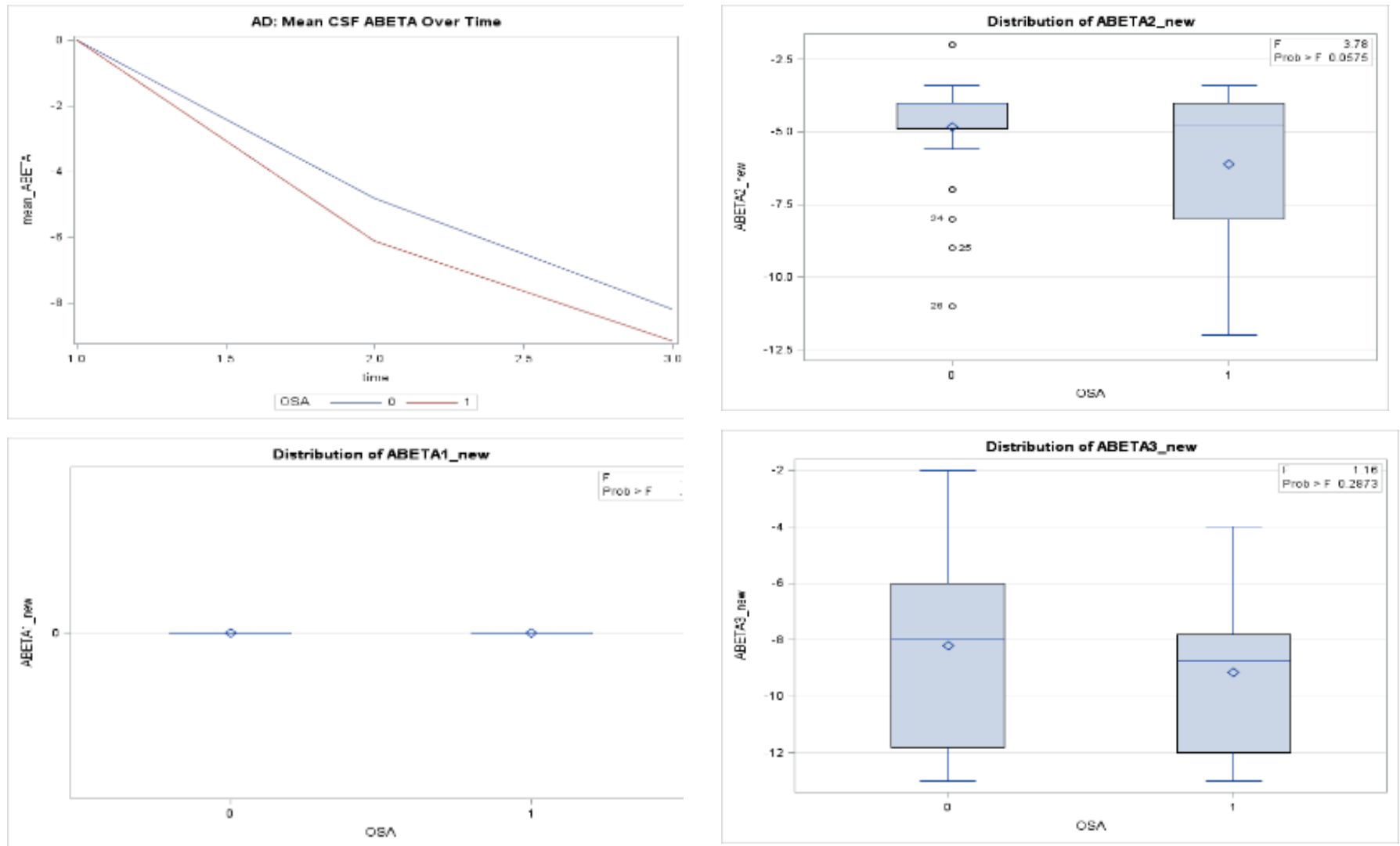
Supplemental Figure 2b: The MANOVA (Multivariate Analysis of Variance) analysis allowed assessment of whether mean changes in AD-biomarker levels were parallel across OSA-groups, whether the mean change in biomarker-data increased/decreased over time, and whether there are significant differences in mean biomarker-data across OSA-groups for all time-points. NL: Cognitive Normal; MCI: Mild Cognitive Impairment; AD: Alzheimer's disease; SUVR: Standard Uptake Value Ratio of Brain Florbetapir; SUVR_COM, SUVR_COM2 and SUVR_COM3: Mean change Brain Florbetapir Uptake Value at time 1, 2 & 3 respectively; CSF: Cerebrospinal fluid, ABETA: amyloid beta; ABETA1_new, ABETA2_new, ABETA3_new: Mean change CSF A β 42 at time 1, 2 & 3 respectively. TAU1_new, TAU2_new, TAU3_new: Mean change TAU at time 1, 2 & 3 respectively; PTAU1_new, PTAU2_new, PTAU3_new: Mean change phosphorylated TAU at time 1, 2 & 3 respectively. Time 1 is baseline; Time 1, 2 & 3 values obtained by subtracting baseline data at each time point

Supplemental Figure 2c: MANOVA results showing mean change differences in AD-biomarker values over time by OSA status (Alzheimer’s Disease– AD Florbetapir)



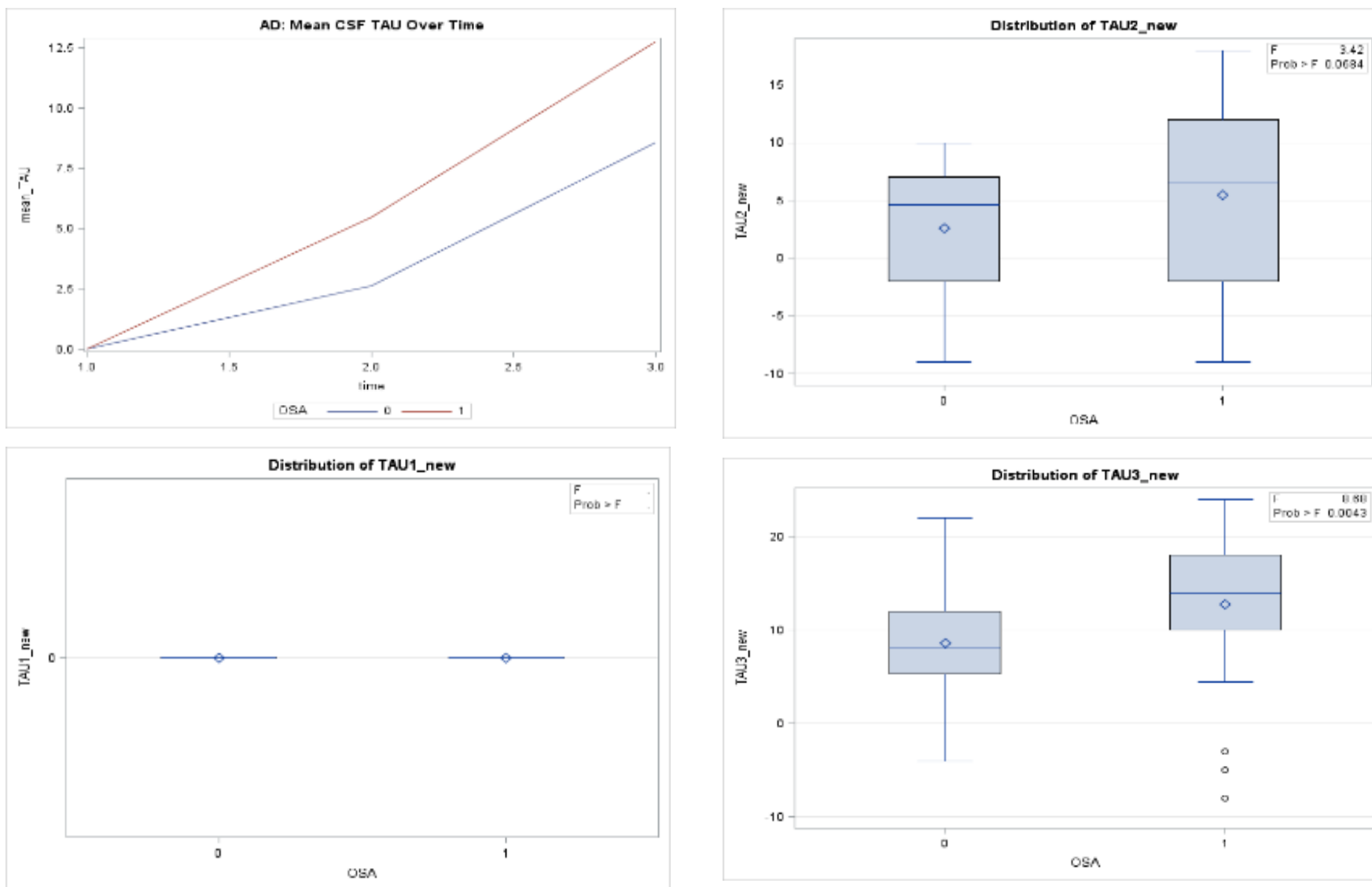
Supplemental Figure 2c: The MANOVA (Multivariate Analysis of Variance) analysis allowed assessment of whether mean changes in AD-biomarker levels were parallel across OSA-groups, whether the mean change in biomarker-data increased/decreased over time, and whether there are significant differences in mean biomarker-data across OSA-groups for all time-points. NL: Cognitive Normal; MCI: Mild Cognitive Impairment; AD: Alzheimer’s disease; **SUVR**: Standard Uptake Value Ratio of Brain Florbetapir; **SUVR_COM**, **SUVR_COM2** and **SUVR_COM3**: Mean change Brain Florbetapir Uptake Value at time 1, 2 & 3 respectively; **CSF**: Cerebrospinal fluid, **ABETA**: amyloid beta; **ABETA1_new**, **ABETA2_new**, **ABETA3_new**: Mean change CSF A β 42 at time 1, 2 & 3 respectively. **TAU1_new**, **TAU2_new**, **TAU3_new**: Mean change TAU at time 1, 2 & 3 respectively; **PTAU1_new**, **PTAU2_new**, **PTAU3_new**: Mean change phosphorylated TAU at time 1, 2 & 3 respectively. Time 1 is baseline; Time 1, 2 & 3 values obtained by subtracting baseline data at each time point

Supplemental Figure 2c: MANOVA results showing mean change differences in AD-biomarker values over time by OSA status (Alzheimer's Disease- AD CSF ABETA)



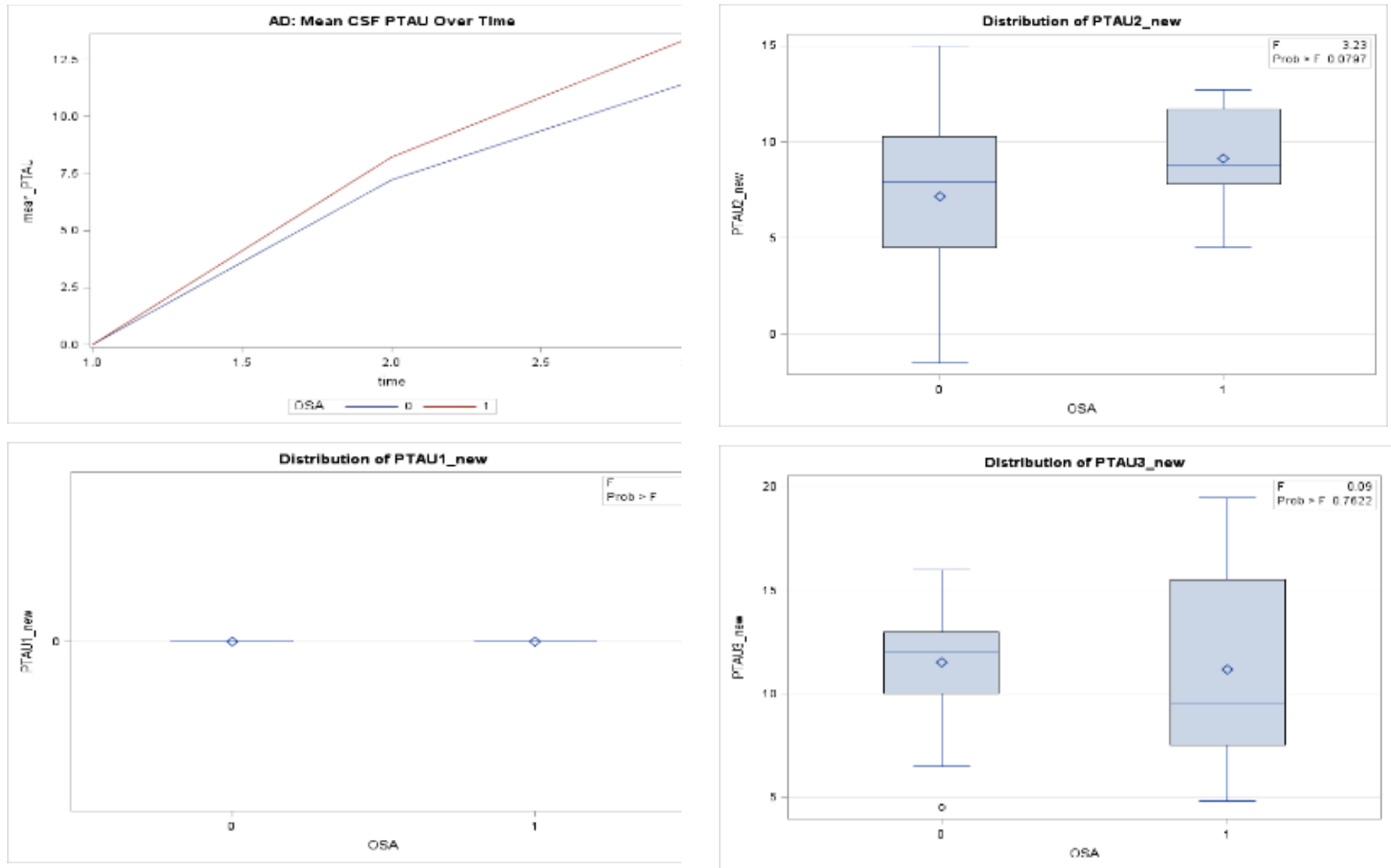
Supplemental Figure 2c: The MANOVA (Multivariate Analysis of Variance) analysis allowed assessment of whether mean changes in AD-biomarker levels were parallel across OSA-groups, whether the mean change in biomarker-data increased/decreased over time, and whether there are significant differences in mean biomarker-data across OSA-groups for all time-points. NL: Cognitive Normal; MCI: Mild Cognitive Impairment; AD: Alzheimer's disease; SUVR: Standard Uptake Value Ratio of Brain Florbetapir; SUVR_COM, SUVR_COM2 and SUVR_COM3: Mean change Brain Florbetapir Uptake Value at time 1, 2 & 3 respectively; CSF: Cerebrospinal fluid, ABETA: amyloid beta; ABETA1_new, ABETA2_new, ABETA3_new: Mean change CSF A β 42 at time 1, 2 & 3 respectively. TAU1_new, TAU2_new, TAU3_new: Mean change TAU at time 1, 2 & 3 respectively; PTAU1_new, PTAU2_new, PTAU3_new: Mean change phosphorylated TAU at time 1, 2 & 3 respectively. Time 1 is baseline; Time 1, 2 & 3 values obtained by subtracting baseline data at each time point

Supplemental Figure 2c: MANOVA results showing mean change differences in AD-biomarker values over time by OSA status (Alzheimer's Disease– AD CSF TTAU)



Supplemental Figure 2c: The MANOVA (Multivariate Analysis of Variance) analysis allowed assessment of whether mean changes in AD-biomarker levels were parallel across OSA-groups, whether the mean change in biomarker-data increased/decreased over time, and whether there are significant differences in mean biomarker-data across OSA-groups for all time-points. NL: Cognitive Normal; MCI: Mild Cognitive Impairment; AD: Alzheimer's disease; **SUVR**: Standard Uptake Value Ratio of Brain Florbetapir; **SUVR_COM**, **SUVR_COM2** and **SUVR_COM3**: Mean change Brain Florbetapir Uptake Value at time 1, 2 & 3 respectively; **CSF**: Cerebrospinal fluid, **ABETA**: amyloid beta; **ABETA1_new**, **ABETA2_new**, **ABETA3_new**: Mean change CSF A β 42 at time 1, 2 & 3 respectively. **TAU1_new**, **TAU2_new**, **TAU3_new**: Mean change TAU at time 1, 2 & 3 respectively; **PTAU1_new**, **PTAU2_new**, **PTAU3_new**: Mean change phosphorylated TAU at time 1, 2 & 3 respectively. Time 1 is baseline; Time 1, 2 & 3 values obtained by subtracting baseline data at each time point

Supplemental Figure 2c: MANOVA results showing mean change differences in AD-biomarker values over time by OSA status (Alzheimer's Disease– AD CSF PTAU)



Supplemental Figure 2c: The MANOVA (Multivariate Analysis of Variance) analysis allowed assessment of whether mean changes in AD-biomarker levels were parallel across OSA-groups, whether the mean change in biomarker-data increased/decreased over time, and whether there are significant differences in mean biomarker-data across OSA-groups for all time-points. NL: Cognitive Normal; MCI: Mild Cognitive Impairment; AD: Alzheimer's disease; SUVR: Standard Uptake Value Ratio of Brain Florbetapir; SUVR_COM, SUVR_COM2 and SUVR_COM3: Mean change Brain Florbetapir Uptake Value at time 1, 2 & 3 respectively; CSF: Cerebrospinal fluid, ABETA: amyloid beta; ABETA1_new, ABETA2_new, ABETA3_new: Mean change CSF A β 42 at time 1, 2 & 3 respectively. TAU1_new, TAU2_new, TAU3_new: Mean change TAU at time 1, 2 & 3 respectively; PTAU1_new, PTAU2_new, PTAU3_new: Mean change phosphorylated TAU at time 1, 2 & 3 respectively. Time 1 is baseline; Time 1, 2 & 3 values obtained by subtracting baseline data at each time point