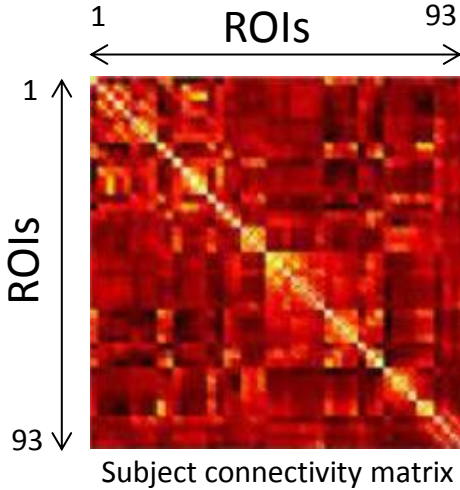
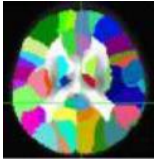


## Appendix 2. Graph analyses.

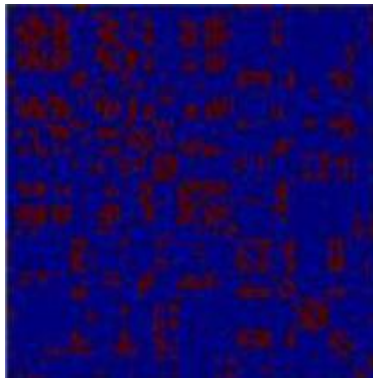
93 ROIs



	ROI 1	ROI 2	ROI 3	ROI 4
ROI 1	1	$r_{12}$	$r_{13}$	$r_{41}$
ROI 2	$r_{21}$	1	$r_{23}$	$r_{24}$
ROI 3	$r_{31}$	$r_{31}$	1	$r_{34}$
ROI 4	$r_{41}$	$r_{42}$	$r_{43}$	1

A smaller connectivity matrix with only 4 ROIs. Each cell (small box) will contain the correlation between the column and row ROIs, for example, the box colored yellow is the correlation between ROI 4 and ROI 1

↓ thresholded,  
binarized



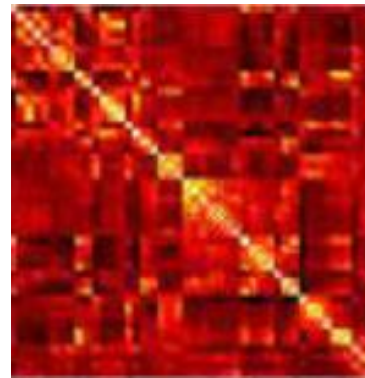
Binary, undirected network

↓

### Graph metrics

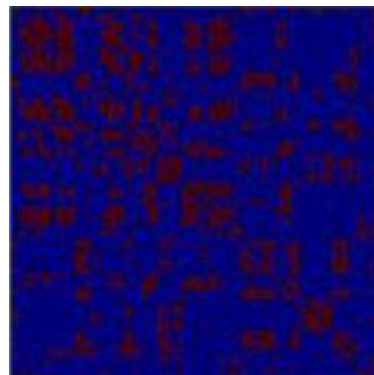
- Clustering coefficient
- Characteristic path length
- Small world index
- Global efficiency
- Local efficiency

↘ average



93 x 93 group averaged  
connectome

↓ thresholded,  
binarized



### Graph metrics

- Modularity