

1 **Supplemental Information**

2

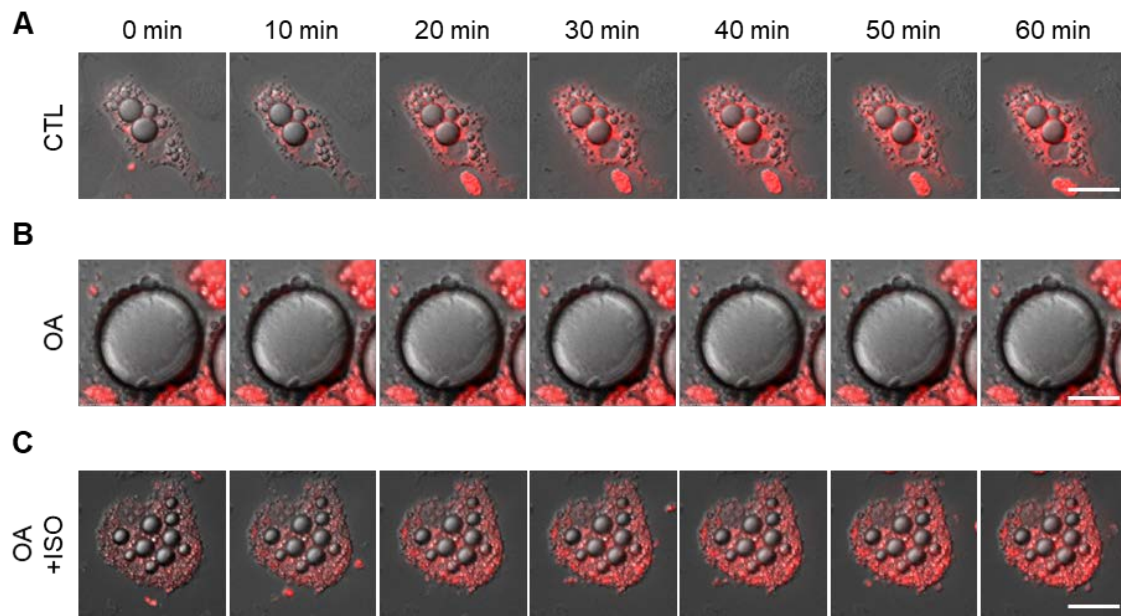
3 **During adipocyte remodeling, lipid droplet configuration regulates insulin**  
4 **sensitivity through F/G-actin reorganization**

5

6 Jong In Kim<sup>1</sup>, Jee Park<sup>1</sup>, Yul Ji<sup>1</sup>, Kyuri Jo<sup>4</sup>, Sang Mun Han<sup>1</sup>, Jee Hyung Sohn<sup>1</sup>, Kyung  
7 Cheul Shin<sup>1</sup>, Ji Seul Han<sup>1</sup>, Yong Geun Jeon<sup>1</sup>, Hahn Nahm Goong<sup>1</sup>, Kyung Hee Han<sup>1</sup>,  
8 Jiwon Kim<sup>1</sup>, Sun Kim<sup>2,3,4</sup>, Sung Sik Choe<sup>1</sup>, and Jae Bum Kim<sup>1</sup>

9

- 10 • Three supplemental movies (Movie S1A, S1B, and S1C)



11

12 **Supplemental Movie 1. GB uptake in 3T3-L1 adipocytes.** Cells were starved for 15  
 13 hours. Fluorescent intensities of GB-Cy3 were monitored after stimulation with insulin  
 14 (100 nM) using Deltavision time-lapse imaging. (A) BSA-treated control adipocyte  
 15 (CTL). (B) OA-treated (6 days) hypertrophic adipocyte (OA). (C) Morphologically  
 16 reversed adipocytes by isoproterenol (2  $\mu$ M, 15 hours) (OA+ISO). Glucose bioprobe  
 17 fluorescence (red) intensities were monitored every 2 minutes. Scale bar = 25  $\mu$ m.