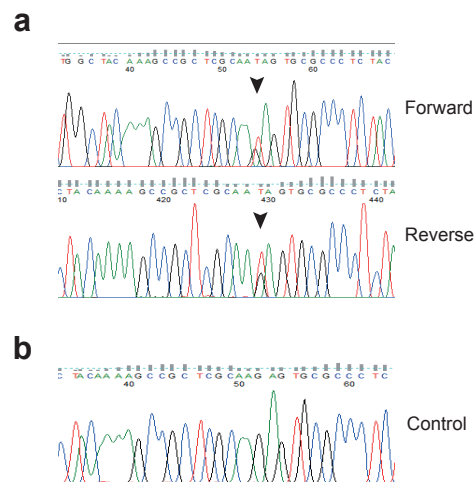


## Supplementary Figure 1



**Supplementary Figure 1 | Histone 3 mutation in T-ALL validation cohort. (a)** Bidirectional Sanger sequencing chromatograms of genomic T-ALL DNA showing a *H3F3A* p.K27N mutation (AAG>AAT). **(b)** Unidirectional trace from a control sample. T-ALL; T-cell acute lymphoblastic leukaemia.