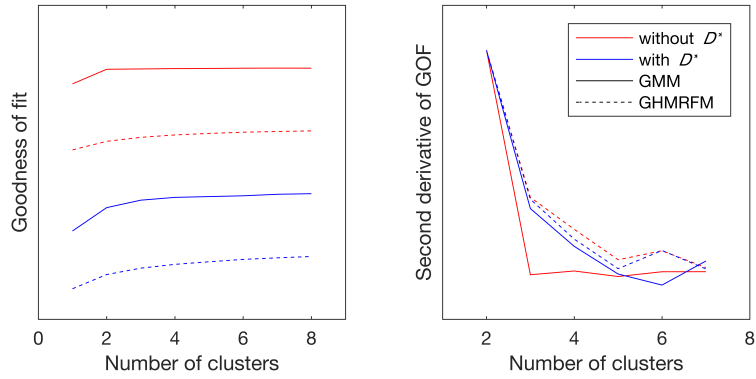
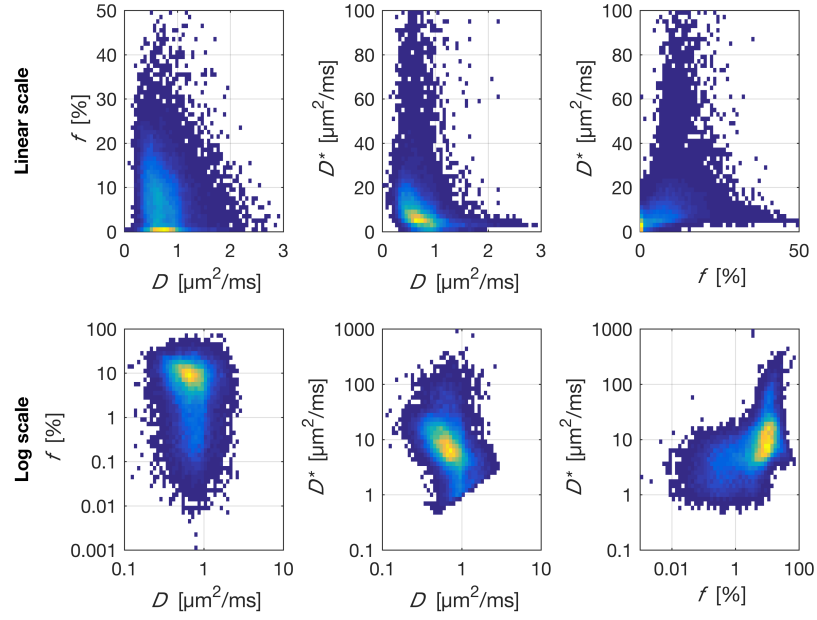


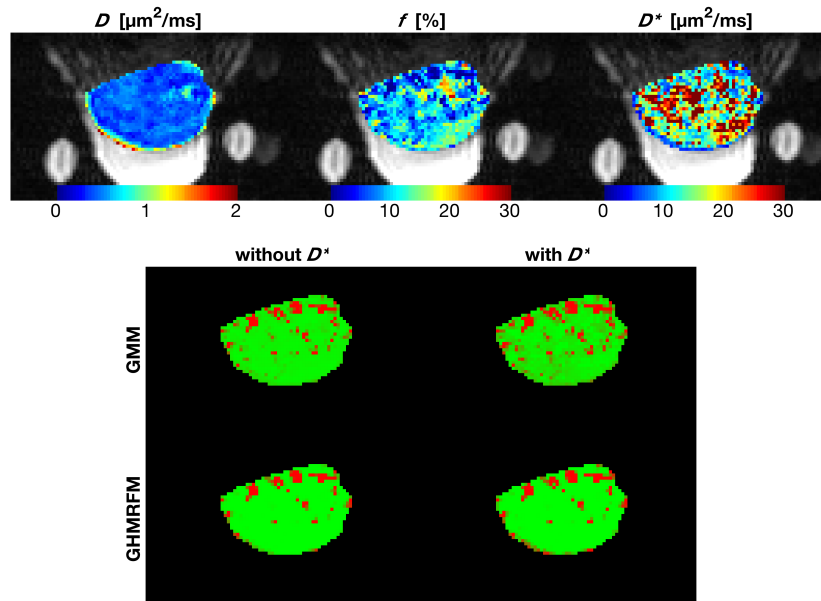
Supporting figures



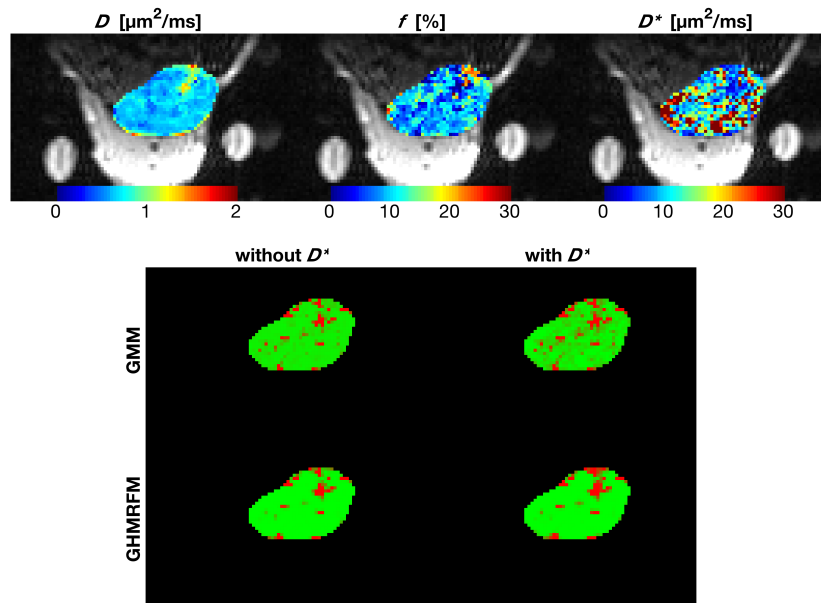
Supporting Information Figure S1: Goodness of fit (GOF) and second derivative of GOF plotted versus the number of clusters k for all clustering approaches. To improve visualization, the curves were linearly distributed in the left graph, and set to have the same maximum value in the right graph



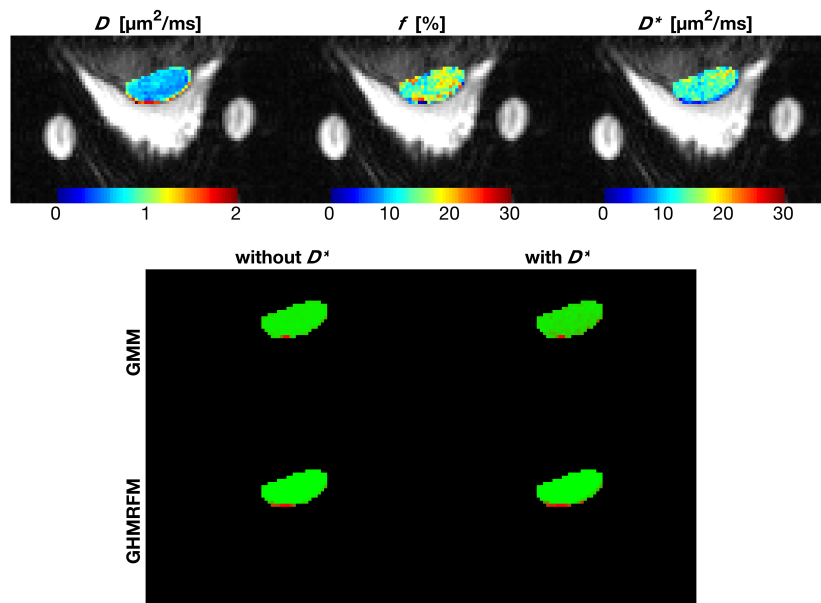
Supporting Information Figure S2: Joint distributions of IVIM parameters before and after log transformation



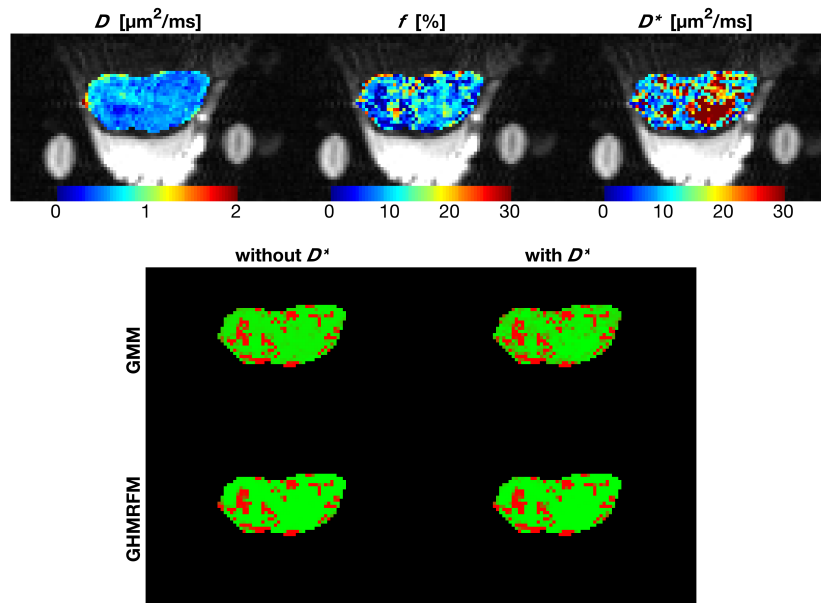
Supporting Information Figure S3: As Figure 4, but tumor 1



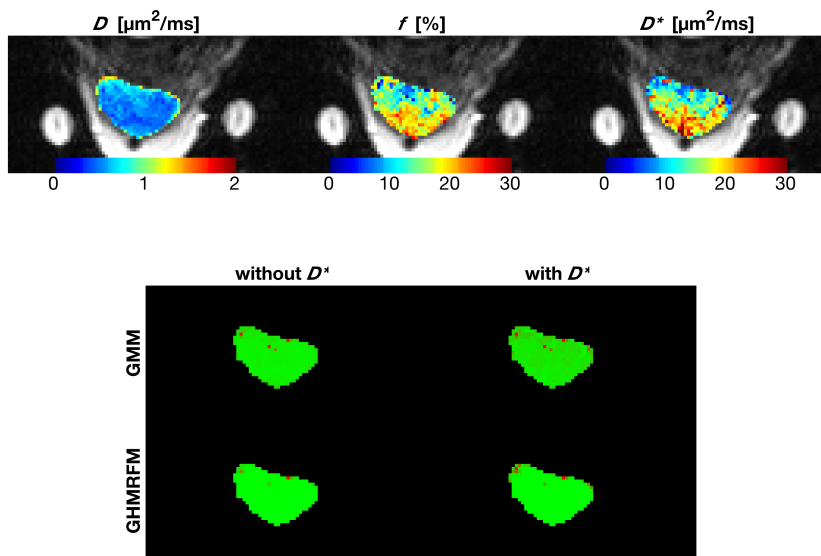
Supporting Information Figure S4: As Figure 4, but tumor 2



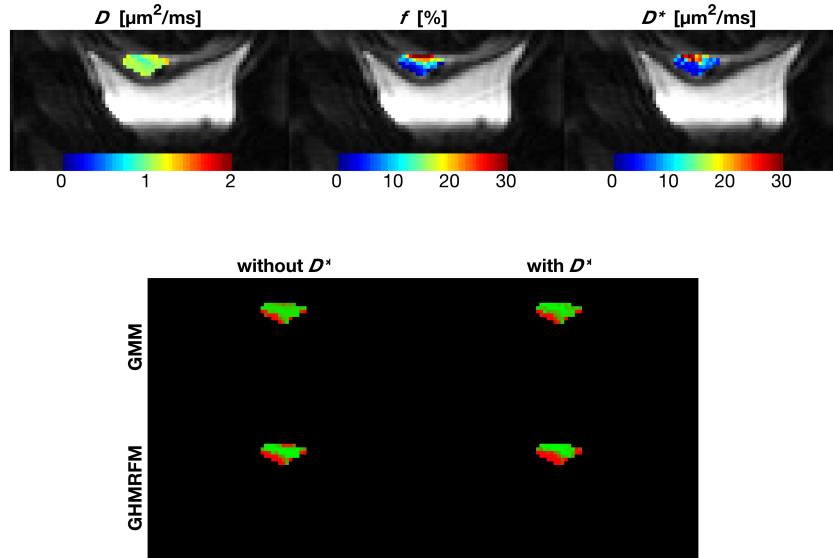
Supporting Information Figure S5: As Figure 4, but tumor 3



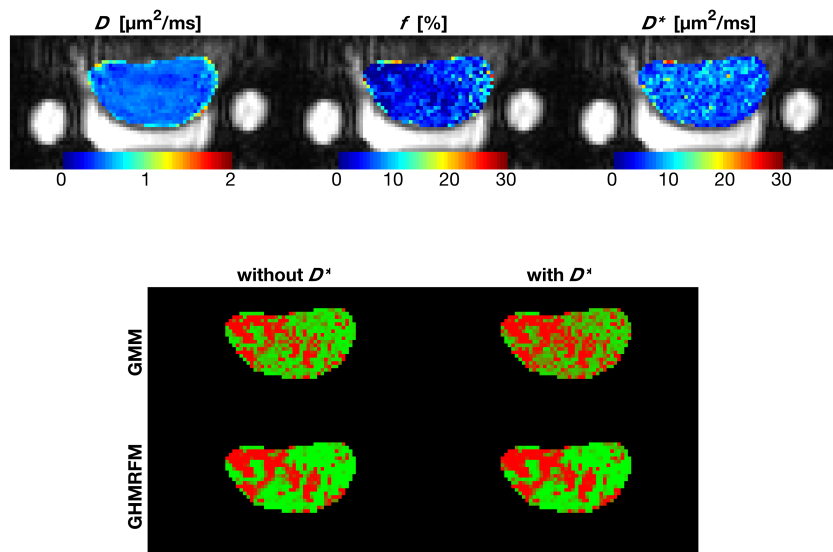
Supporting Information Figure S6: As Figure 4, but tumor 4



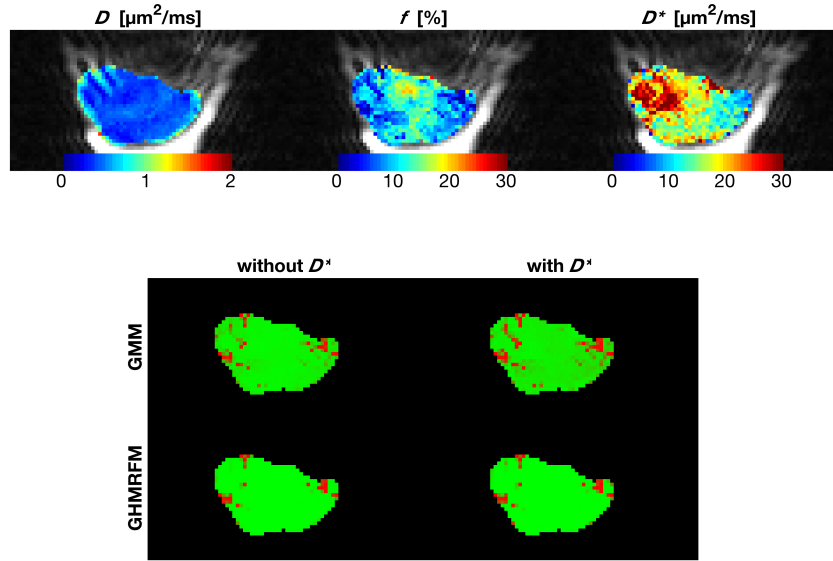
Supporting Information Figure S7: As Figure 4, but tumor 5



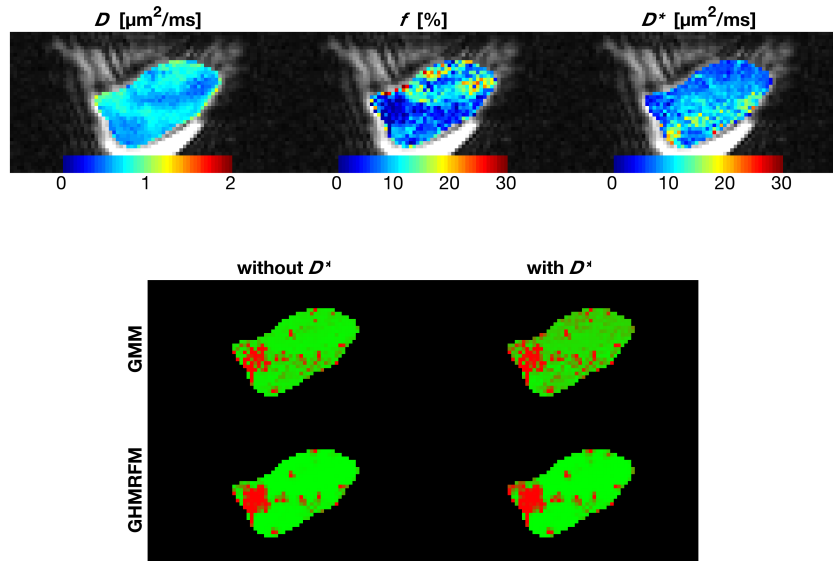
Supporting Information Figure S8: As Figure 4, but tumor 6



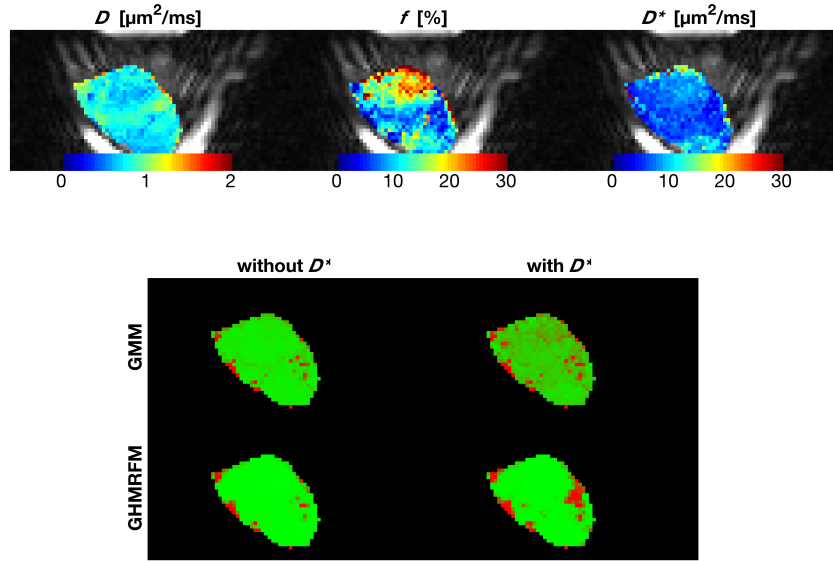
Supporting Information Figure S9: As Figure 4, but tumor 7



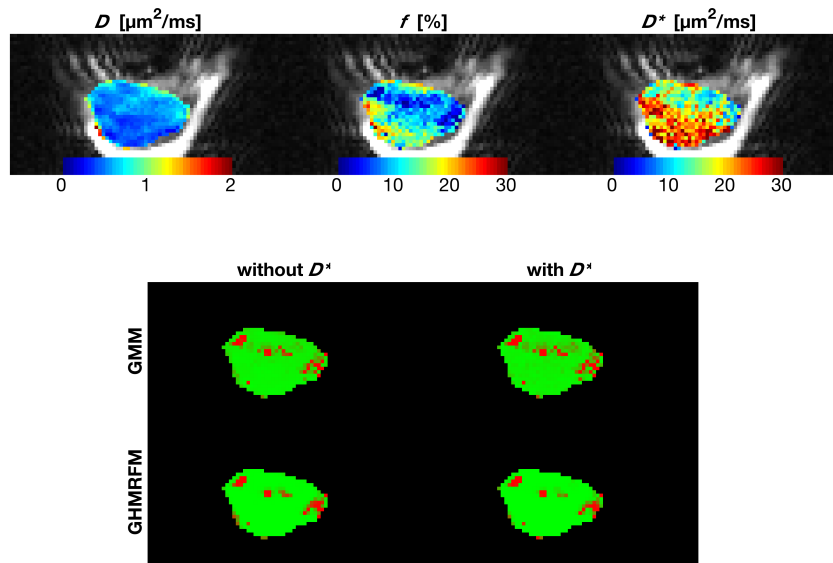
Supporting Information Figure S10: As Figure 4, but tumor 8



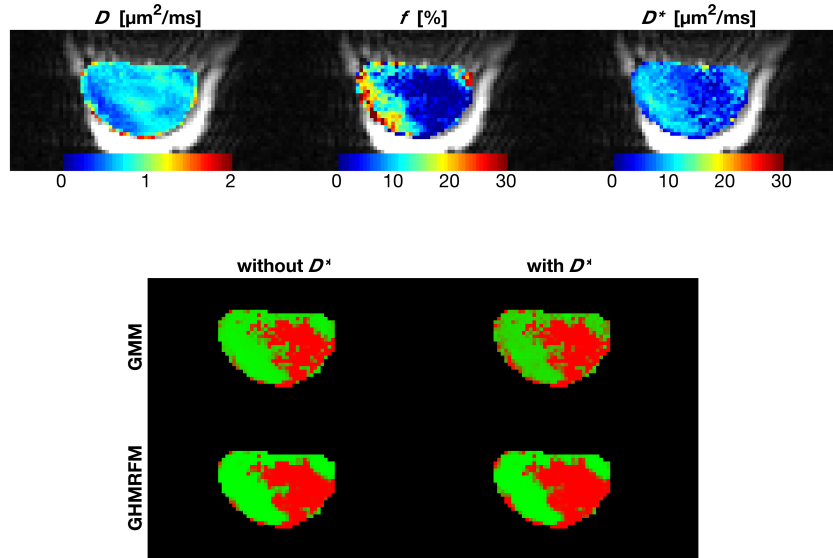
Supporting Information Figure S11: As Figure 4, but tumor 9



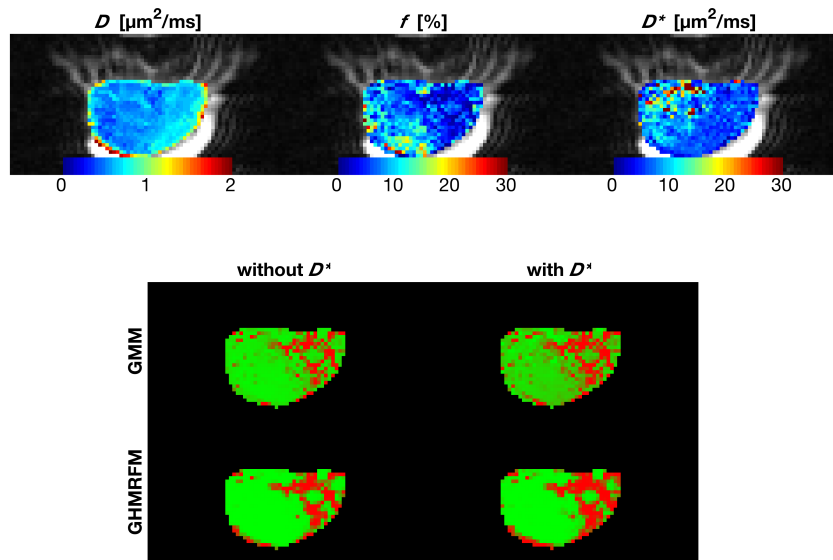
Supporting Information Figure S12: As Figure 4, but tumor 10



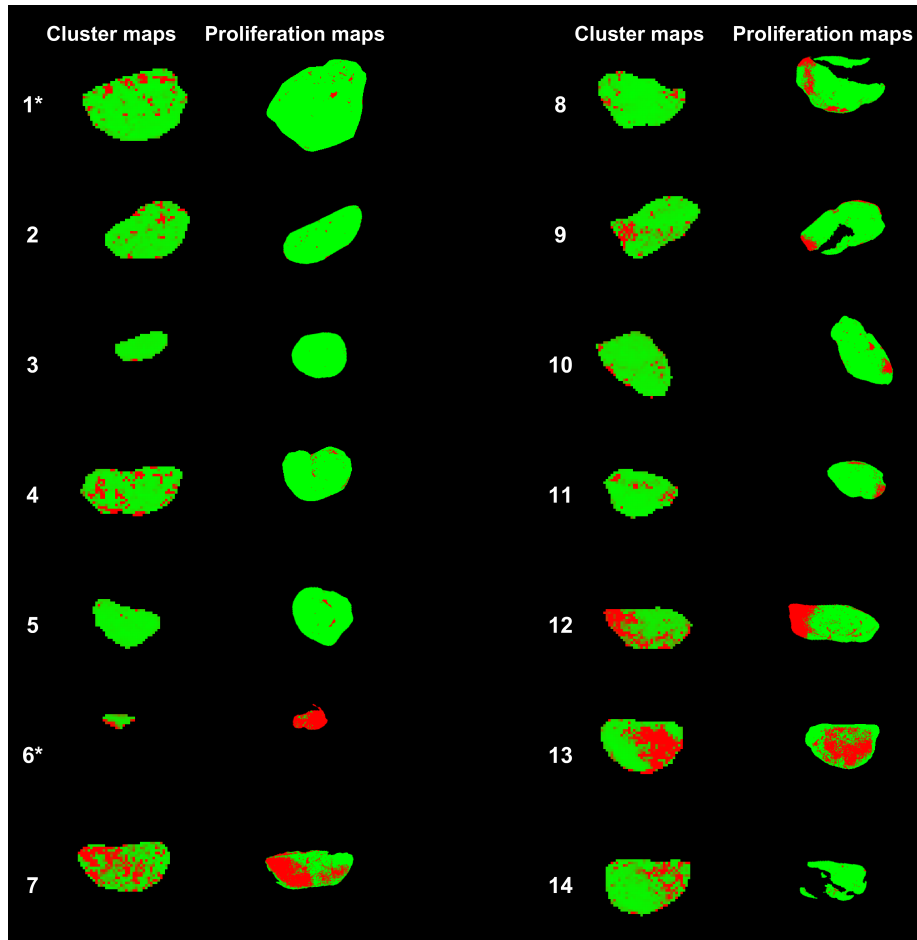
Supporting Information Figure S13: As Figure 4, but tumor 11



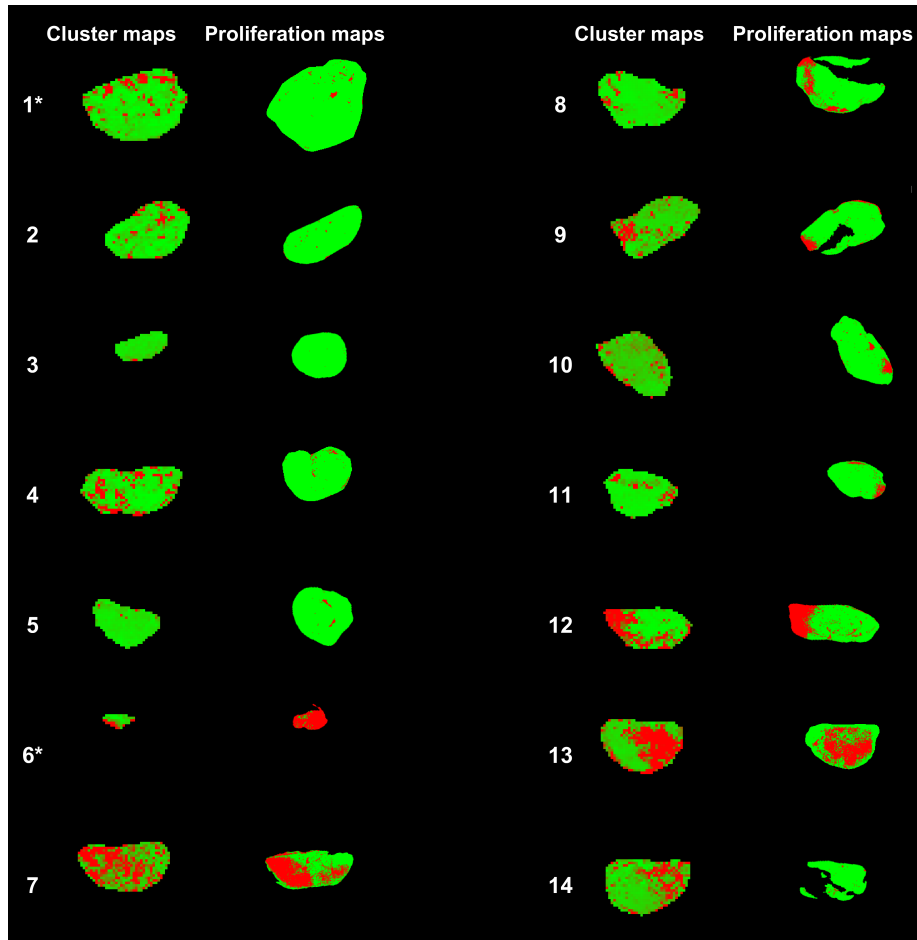
Supporting Information Figure S14: As Figure 4, but tumor 13



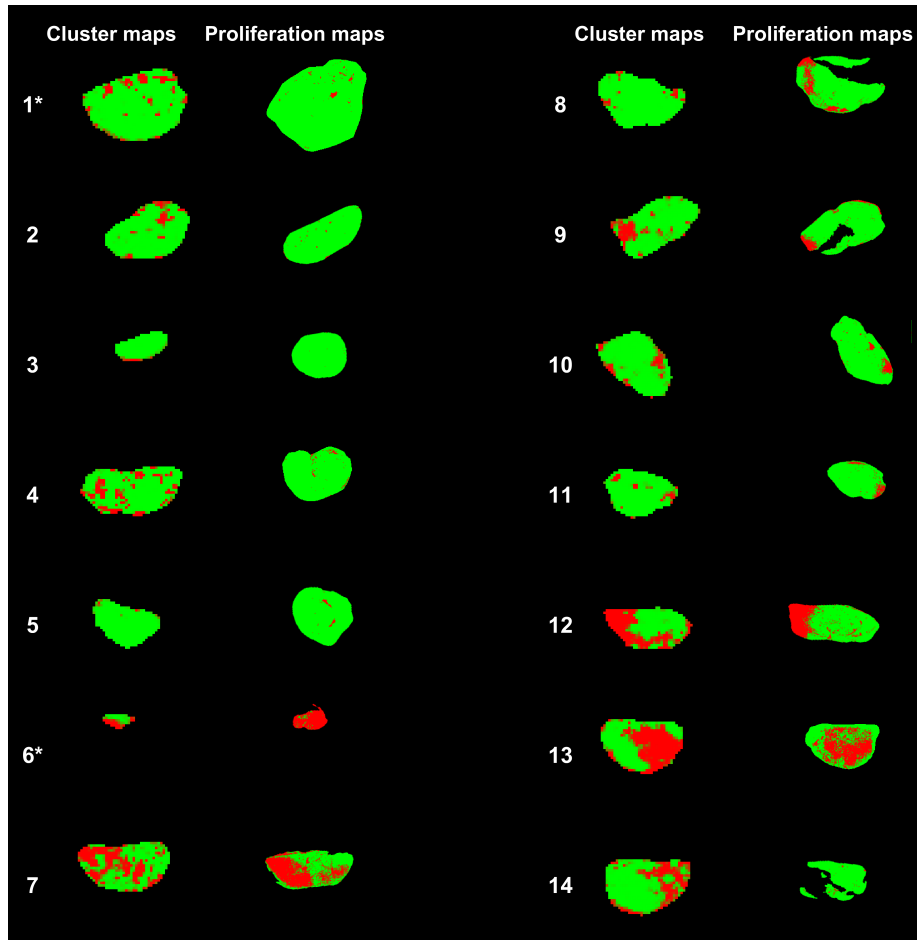
Supporting Information Figure S15: As Figure 4, but tumor 14



Supporting Information Figure S16: As Figure 6, but GMM without D^*



Supporting Information Figure S17: As Figure 6, but GMM with D^*



Supporting Information Figure S18: As Figure 6, but GHMRFM with D^*