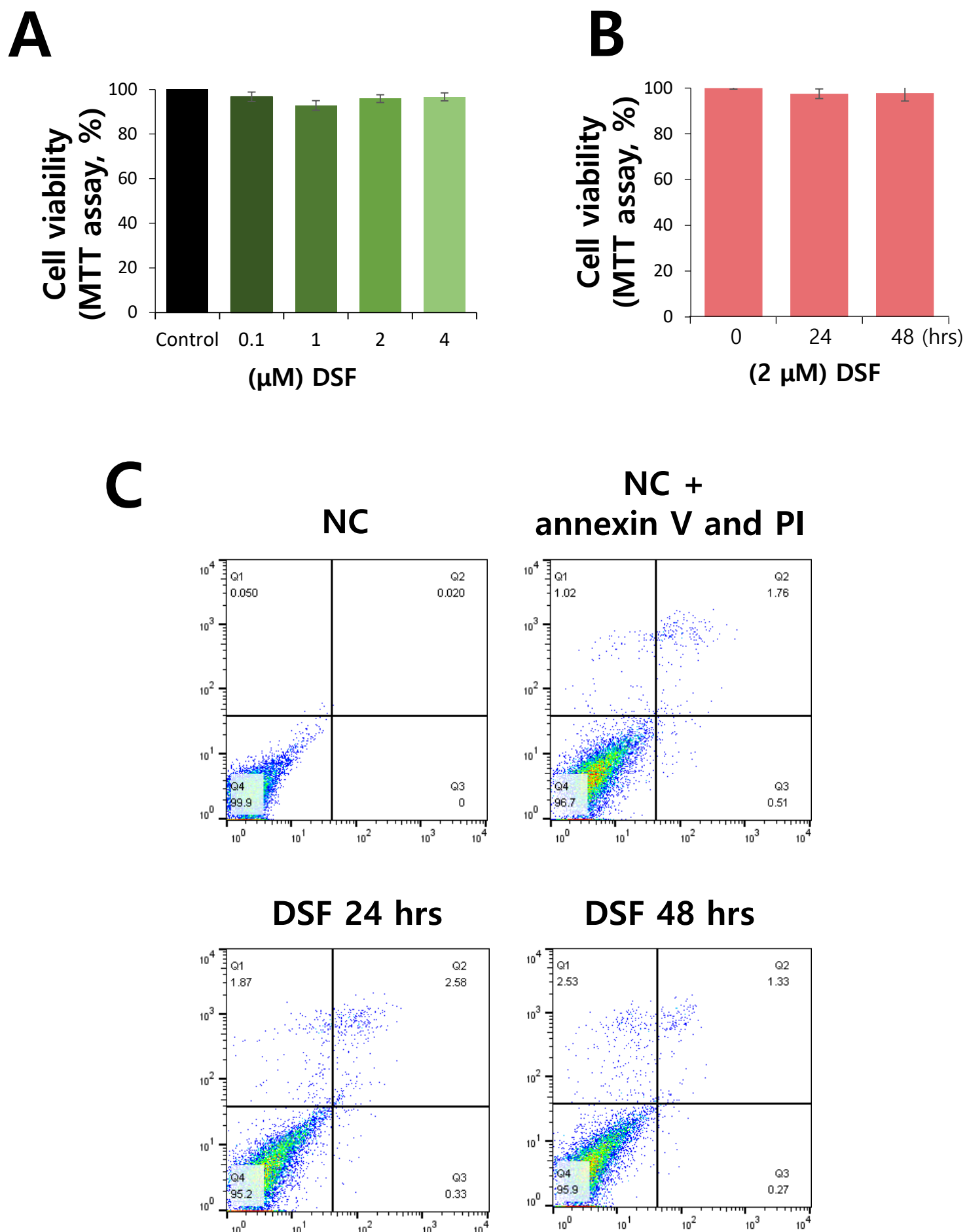
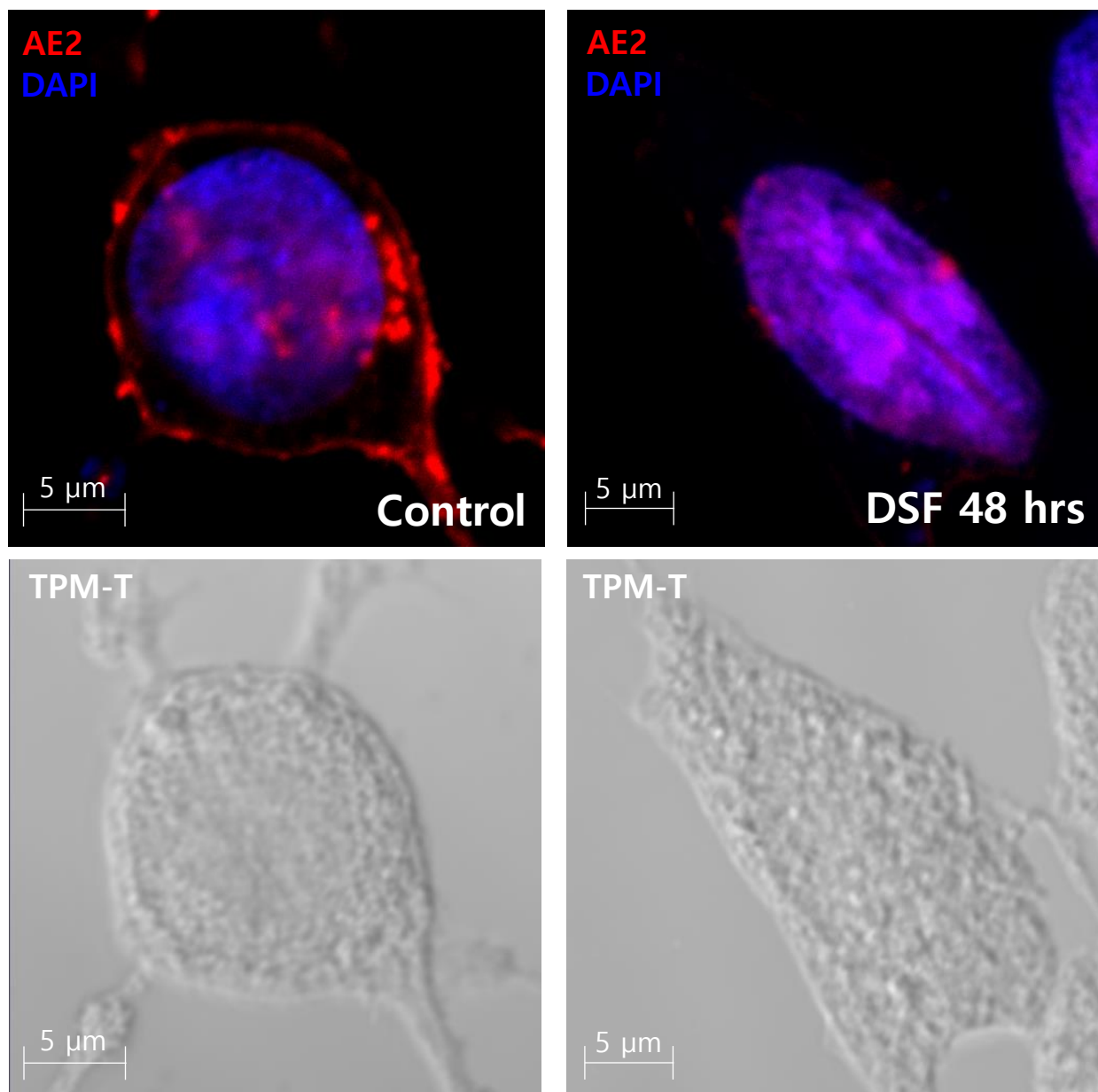


Supplementary Figure 1. Hwang et al.



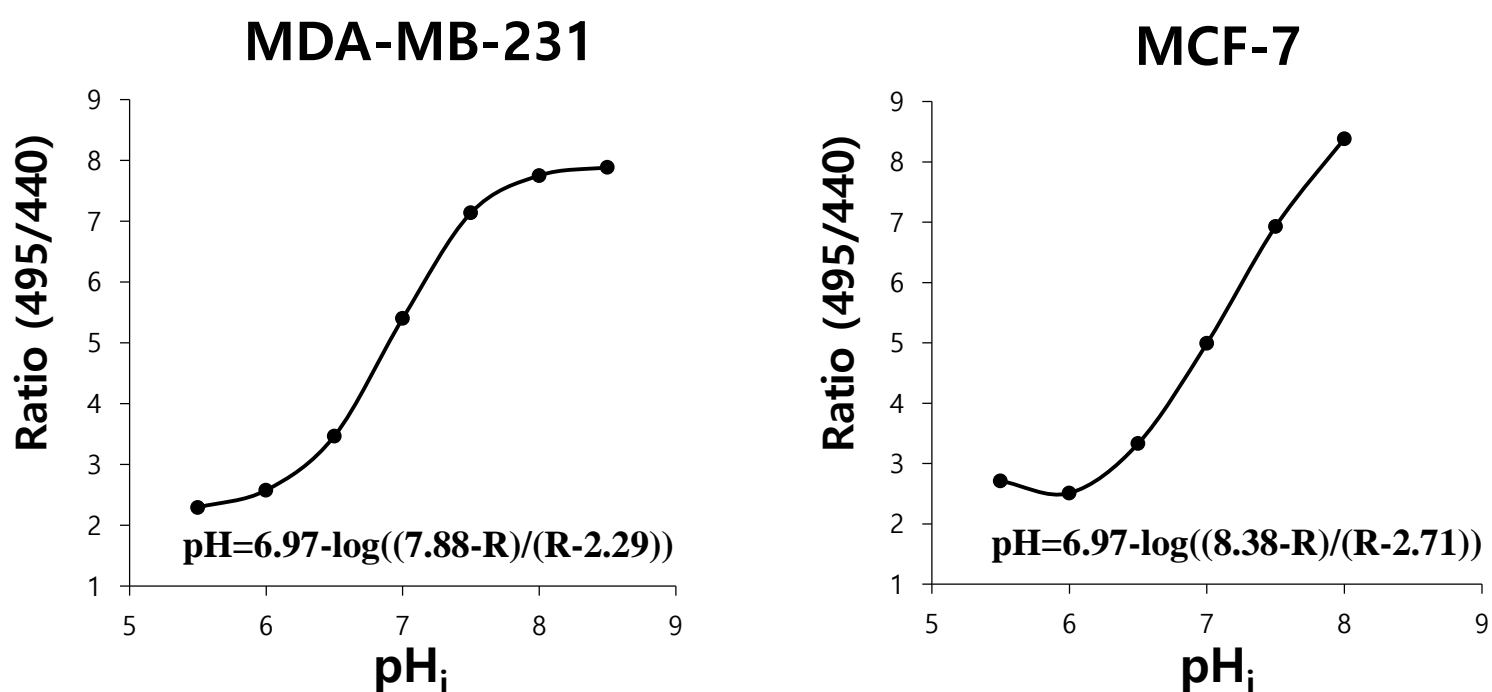
Supplementary Figure 1. Cell viability of DSF-treated A549 cells. Apoptosis analysis using MTT assay. The cells were treated with DSF of A549 cells with a dose (A) time (B)-dependent manner. (C) FACS analysis of apoptosis following treatment with 2 μ M DSF for indicated time.

Supplementary Figure 2. Hwang et al.



Supplementary Figure 2. The effect of DSF on the localization of AE2 in AE2-overexpressed HEK293T cells. Immunostaining of AE2 (red) and nucleus (DAPI, blue) and cell morphology (TPM-T, gray) following 2 μM DSF treatment for 48 hrs. The scale bars represent 5 μm.

Supplementary Figure 3. Hwang et al.



Supplementary Figure 3. Calibration curve of intracellular pH change (ratio) of MDA-MB-231 and MCF-7 cells.

Calibration curve showing intracellular pH level of MDA-MB-231 cells ($\text{pH} = 6.97 - \log(7.88 - R/R - 2.29)$) and MCF-7 cells ($\text{pH} = 6.97 - \log(8.38 - R/R - 2.71)$).