

Supplementary Materials

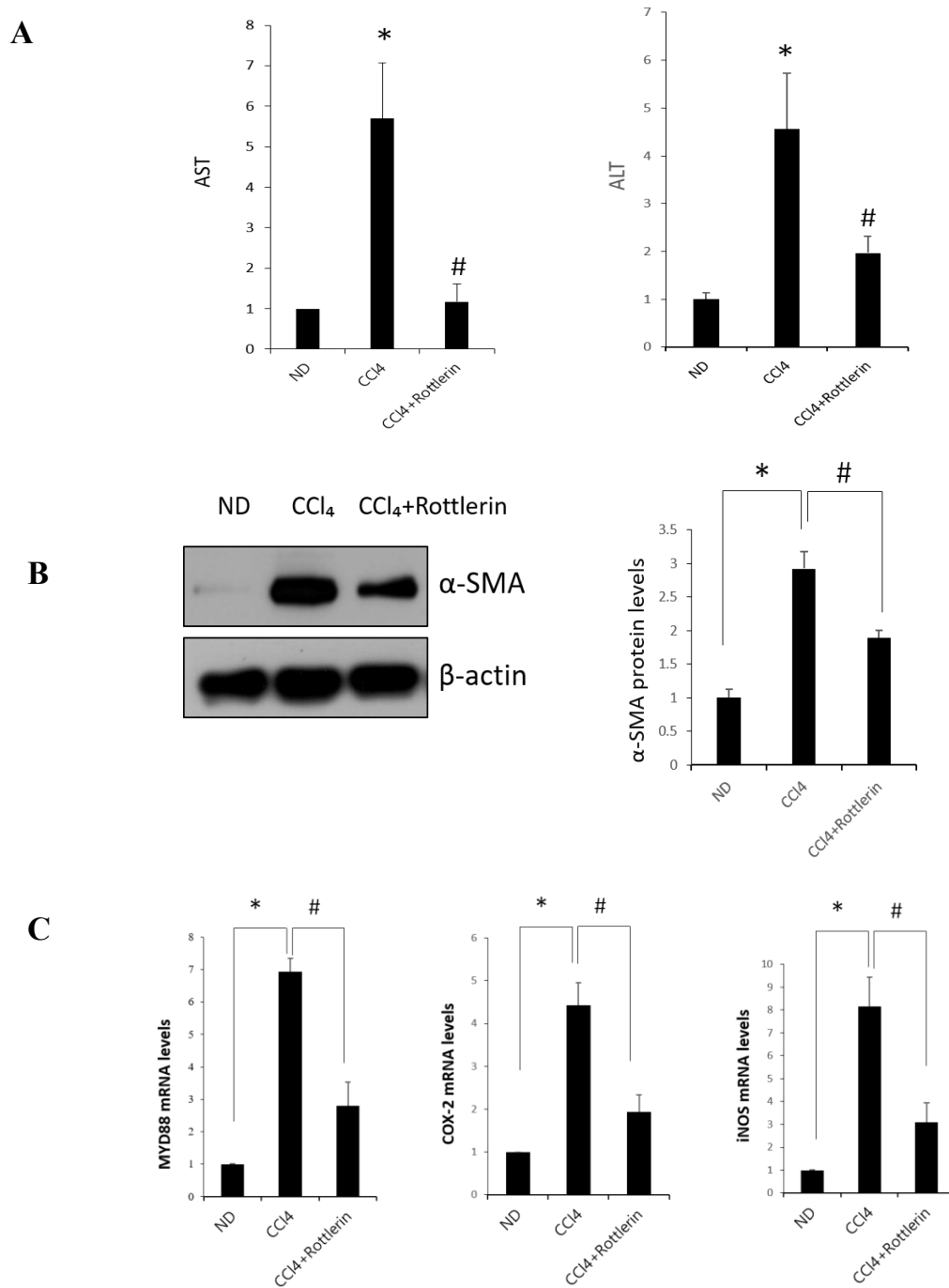


Figure. S1. Effects of rottlerin on carbon tetrachloride (CCl₄)-induced liver fibrosis in mice. (A) Serum AST and ALT levels were measured in CCl₄ mice with and without rottlerin treatment. (B) The level of α -SMA in CCl₄ mice after rottlerin treatment was analyzed by immunoblotting. (C) Hepatic mRNA levels of *myd88*, *COX-2*, and NF- κ B-mediated the inflammatory cytokine *iNOS* were measured by qRT-PCR.

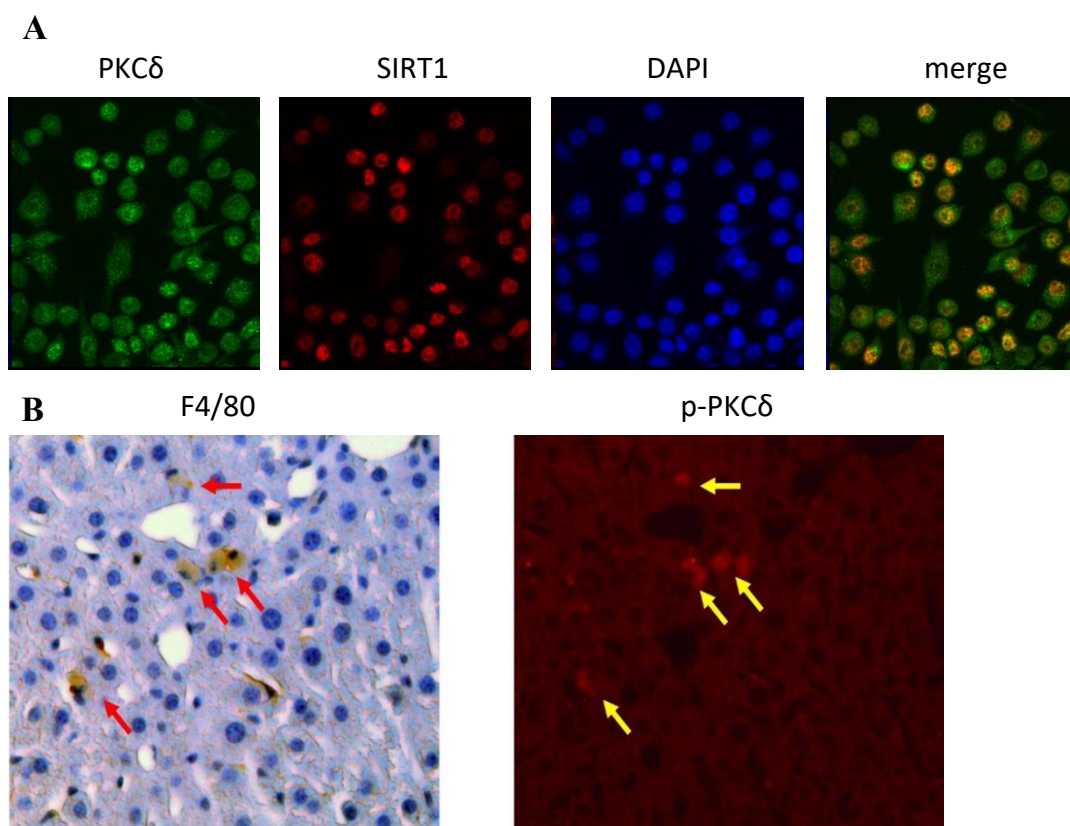


Figure. S2. localization of PKC δ . (A) Colocalization of PKC δ and SIRT1 in Raw 264.7 cells. Double Immunofluorescence staining for PKC δ (Green) and SIRT1 (Red) were assessed for colocalization by confocal microscopy (Original magnification, 200 \times). (B) Colocalization of F4/80 and p-PKC δ in hepatic macrophages in CCl₄ model. Double immunohistochemical staining for F4/80 (DAB indicated by red arrows) and p-PKC δ (red fluorescence indicated by yellow arrows) were assessed for colocalization by confocal microscopy (Original magnification, 200 \times).

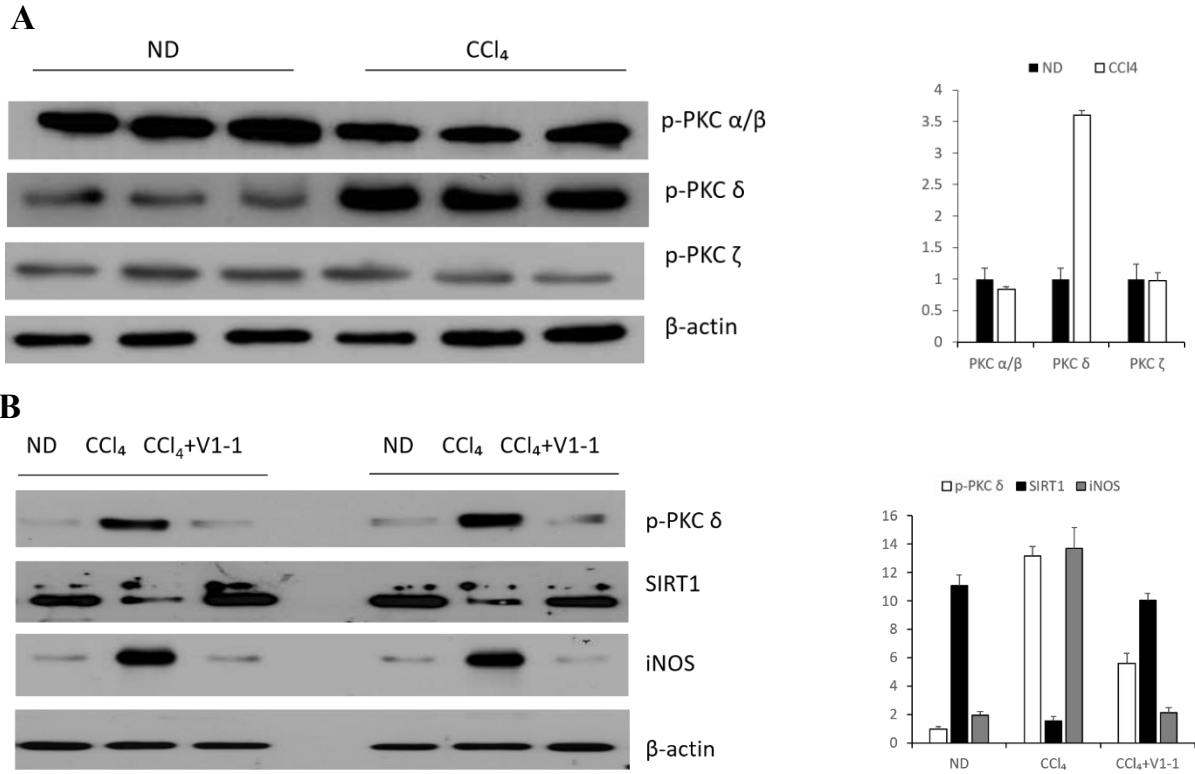


Figure. S3. Western blot assays (representative blots). (A) Fig 1A and (B) Fig 5C

Table S1. Primers used for real-time PCR

Primer Name	Sequences
<i>18S</i>	(F)5'-GTA ACC CGT TGA ACC CCA TT-3'
	(R)5'-CCA TCC AAT CGG TAG TAG CG-3'
<i>GAPDH</i>	(F)5'-TGG TAT CGT GGA AGG ACT CA
	(R)5'-AGT GGG TGT CGC TGT TGA AG
<i>TNFα</i>	(F)5'-CAC CAC CAT CAA GGA CTC AA-3'
	(R)5'-AGG CAA CCT GAC CAC TCT CC-3'
<i>Myd88</i>	(F)5'-AGA ACA GAC AGA CTA TCG GCT-3'
	(R)5'-CGG CGA CAC CTT TTC TCA AT-3'
<i>COX-2</i>	(F)5'-ATT CCT GGC GTT ACC TTG-3'
	(R)5'-CTG TAT TCC GTC TCC TTG GTT-3'
<i>IL-1β</i>	(F) 5'-GCAACTGTTCTGAAGTCAACT-3'
	(R) 5'-ATCTTTTGGGGTCCGTCAACT-3'
<i>IL-6</i>	(F)5'-GAC AAC TTT GGC ATT GTG G-3'
	(R)5'-ATG CAG GGA TGA TGT TCT G-3'
<i>TLR4</i>	(F)5'-ACC TCT GCC TTC ACT ACA GA-3'
	(R)5'-AGG GAC TTC TCA ACC TTC TC-3'
<i>iNOS</i>	(F)5'-CTG CAG CAC TTG GAT CAG GAA CCT G-3'
	(R)5'-GGG AGT AGC CTG TGT GCA CCT GGA A-3'

<i>collagen</i>	(F) 5'- GAC ATC CCT GAA GTC AGC TGC-3'
	(R) 5'-TCC CTT GGG TCC CTC GAC-3'
<i>SIRT1</i>	(F) 5'-TTG TGA AGC TGT TCG TGG AG-3'
	(R) 5'-GGC GTG GAG GTT TTT CAG TA-3'