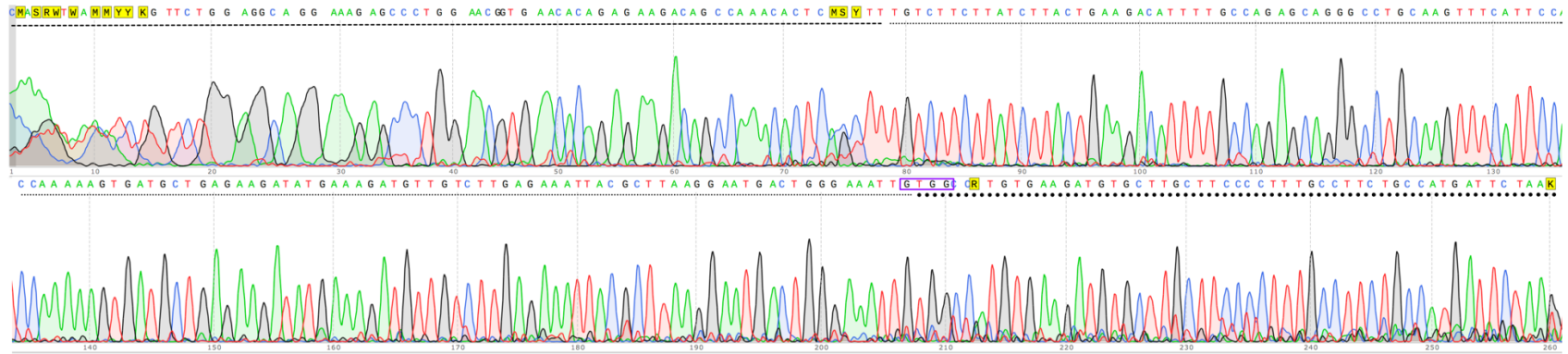


Forward sequence



Reverse complement sequence

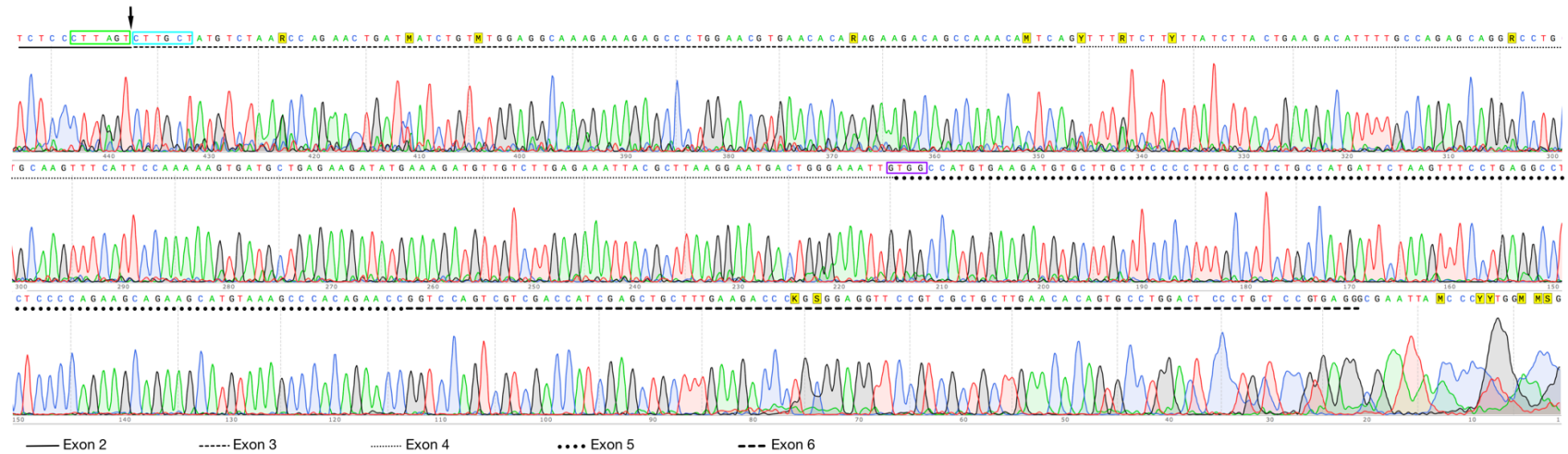
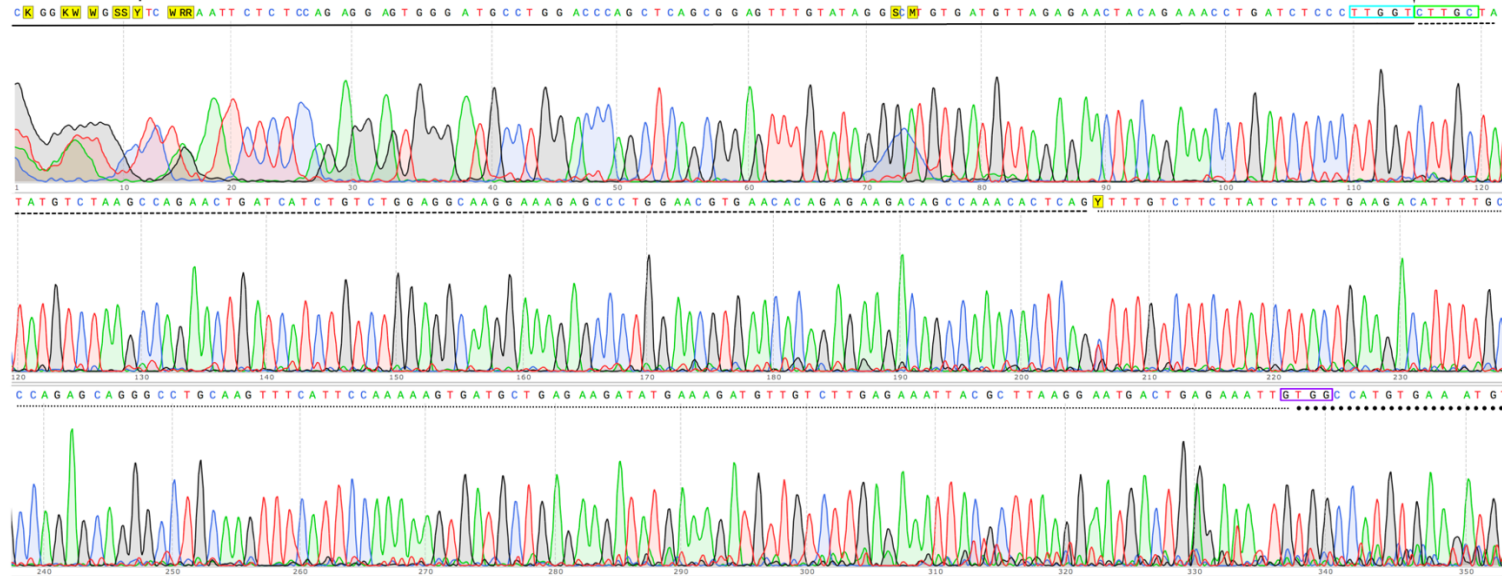


Figure S1. Representative sequence ZNF695_TV6. The electropherogram shows the forward and reverse sequences of the ZNF694 TV6 expressed in the cancer cell lines. The purple box shows the four nucleotides that identify ZNF695_TV3, the green and blue box show the boundary exon 2 and 3, respectively, and the arrow indicate the SS2. Additionally, the lines below the nucleotides indicate the sequence of each exon.

Forward sequence



Reverse complement sequence

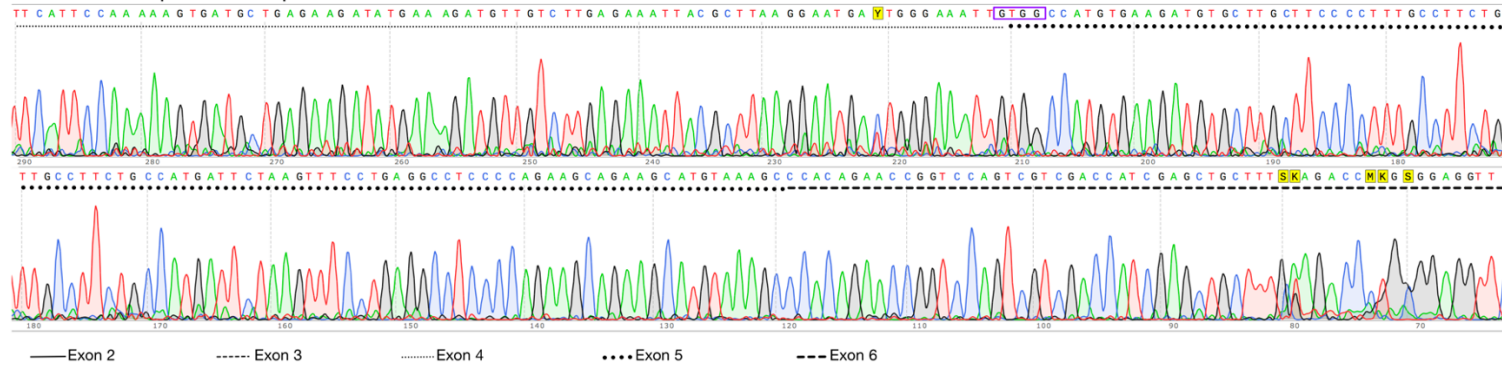


Figure S2. Representative sequence ZNF695_TV7. The electropherogram shows the forward and reverse sequences of the ZNF695 TV7 expressed in the cancer cell lines. The purple box shows the four nucleotides that identify ZNF695_TV3, the green and blue box show the boundary exon 2 and 3, respectively, and the arrow indicate the SS2. Additionally, the lines below the nucleotides indicate the sequence of each exon.