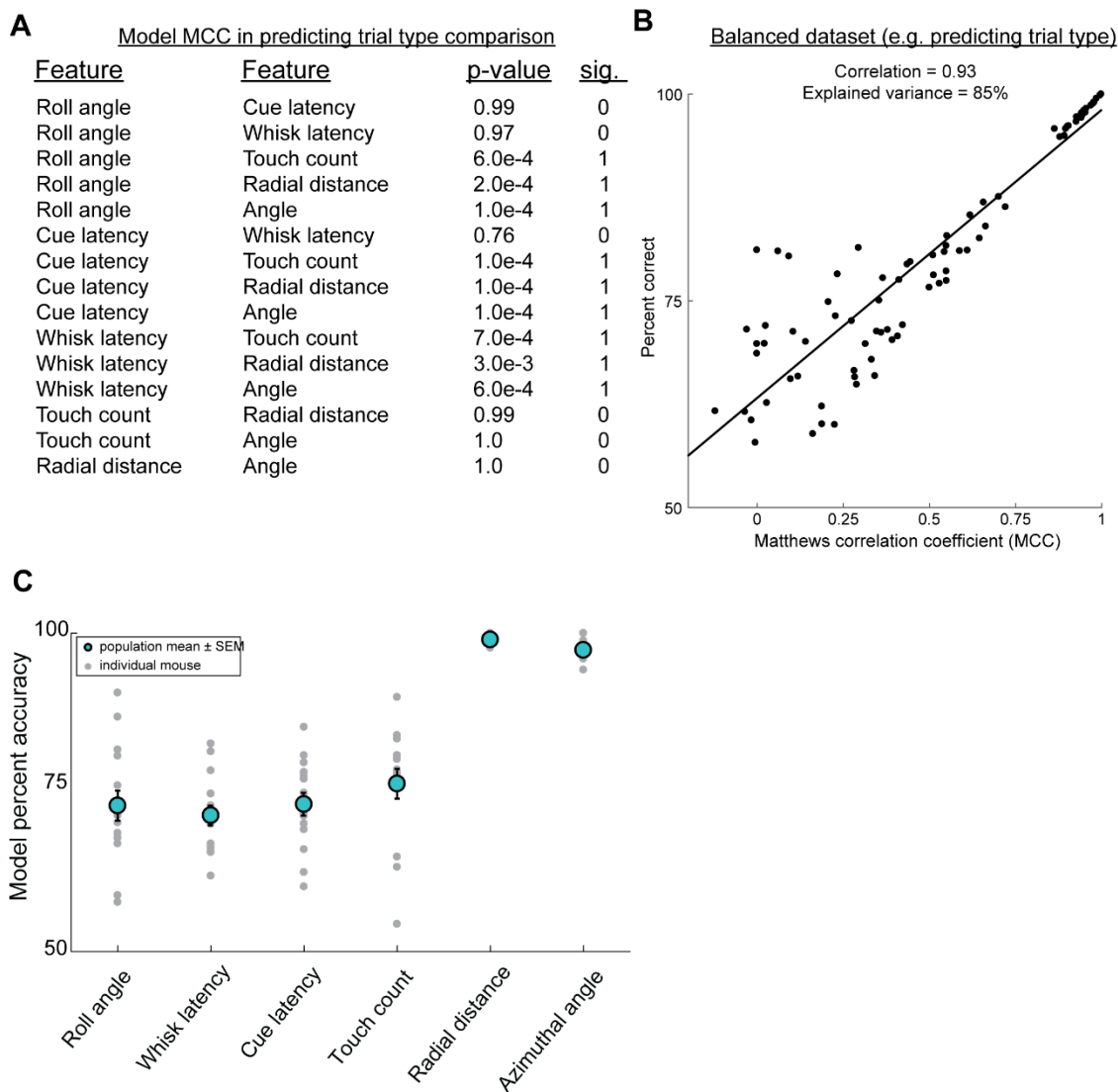


**Current Biology, Volume 29**

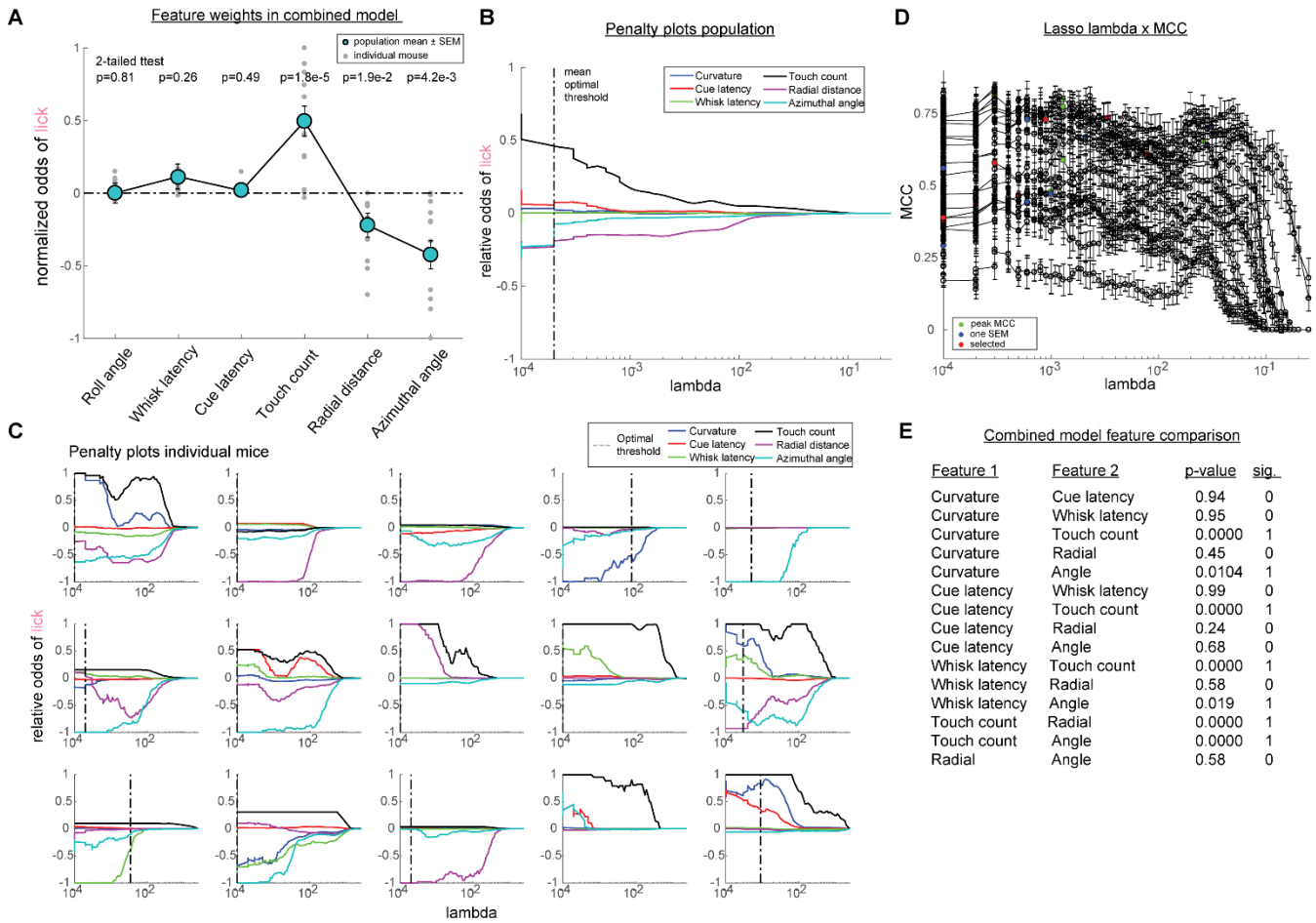
**Supplemental Information**

**The Sensorimotor Basis  
of Whisker-Guided Anteroposterior  
Object Localization in Head-Fixed Mice**

**Jonathan Cheung, Phillip Maire, Jinho Kim, Jonathan Sy, and Samuel Andrew Hires**

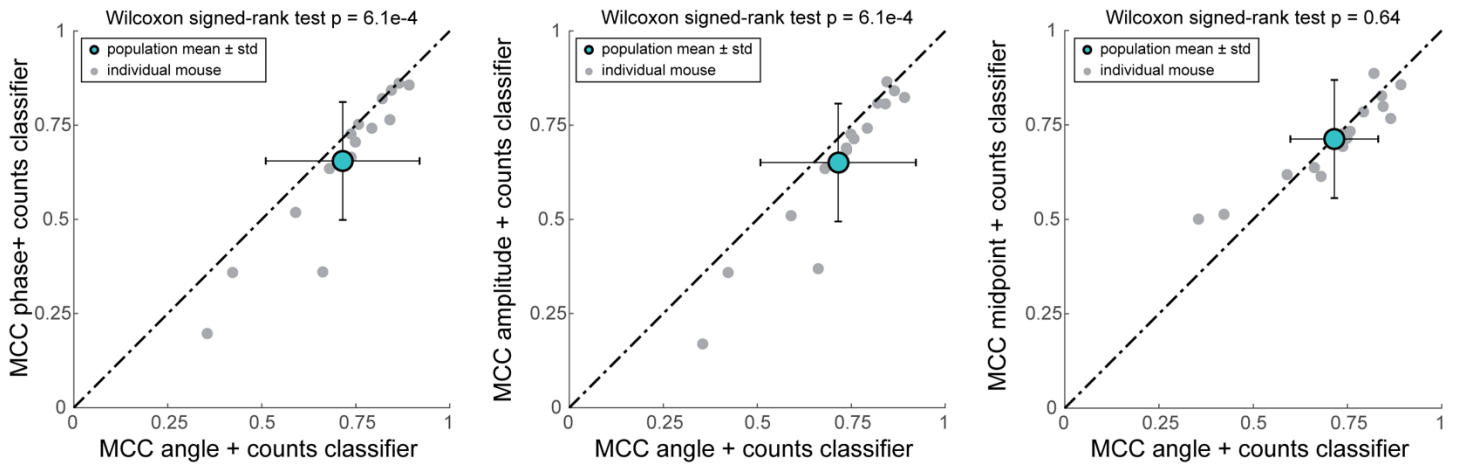


**Figure S1. MCC versus accuracy for the trial type prediction models, Related to Figure 4.** A) P-values comparison between the trial type predictive accuracy of pairs of features using a 1-way ANOVA. B) In a balanced distribution of predicted values (e.g. trial type), both accuracy and MCC values provide complementary information of model performance. ( $r = 0.93$ ,  $R^2 = 0.85$ ). C) Model accuracy reported instead of MCC for Fig 4G.

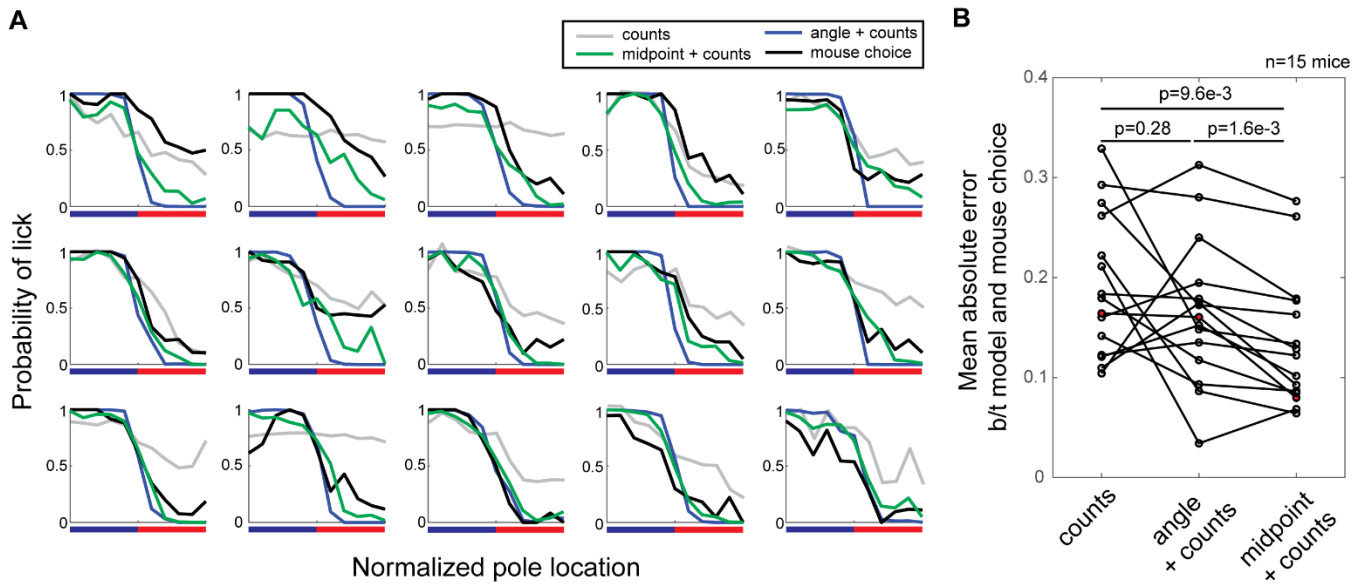


**Figure S2. Combined model weights and lasso feature reduction in choice prediction, Related to Figure 4.** A) Comparison of normalized odds for predicting choice in the combined model. Gray dots denote the weights for each mouse and turquoise dots denote the mean  $\pm$  SEM across the population. B) Penalty plots for the population mean. C) MCC performance as a function of lambda. Green dots denote peak MCC value, blue dots denote MCC values 1 SEM away from peak, and red dot denotes mean lambda of peak and 1 SEM away (i.e. chosen optimal lambda). D) Penalty plots for individual mice. E) p-values comparing classifier weights; one-way ANOVA.





**Figure S4. Comparison of touch count + touch angle classifier performance versus touch count + each Hilbert component individually, Related to Figure 7.**



**Figure S5. Comparison of models for optimal trial type discrimination and mouse behavior, Related to Figure 7.** A) Psychometric curves for optimal trial type discrimination performance using counts, midpoint+counts and angle+counts compared against mouse choice. B) Comparison of mean absolute error between models and mouse choice for counts ( $0.19 \pm 0.07$ std), angle+counts ( $0.17 \pm 0.07$ std) and midpoint+counts ( $0.13 \pm 0.06$ std) classifiers (paired t-test). Red filled dot denotes example in Figure 7I.