

Draft genome sequence of the *Solanum aethiopicum* provides insight into disease resistance, drought tolerance and evolution

--Manuscript Draft--

Manuscript Number:	GIGA-D-19-00026	
Full Title:	Draft genome sequence of the <i>Solanum aethiopicum</i> provides insight into disease resistance, drought tolerance and evolution	
Article Type:	Research	
Funding Information:	National Natural Science Foundation of China (No. 31601042)	Dr. Bo Song
	Science, Technology and Innovation Commission of Shenzhen Municipality (JCYJ20151015162041454)	Not applicable
	Science, Technology and Innovation Commission of Shenzhen Municipality (JCYJ20160331150739027)	Not applicable
	Guangdong Provincial Key Laboratory of Genome Read and Write (No. 2017B030301011)	Dr. Xin Liu
Abstract:	<p>Background The African eggplant <i>S. aethiopicum</i> is a close relative to <i>S. melongena</i> and has been routinely used to improve disease resistance in <i>S. melongena</i>. However, these efforts have been greatly limited by the lack of a reference genome and clear understanding of the genes involved during biotic and abiotic stress response.</p> <p>Results We present here a draft genome assembly of <i>S. aethiopicum</i> of 1.02 Gb in size, which is predominantly occupied by repetitive sequences (76.2%), particularly long terminal repeat elements. We annotated 37,681 gene models including 34,905 protein-coding genes. We observed an expansion of resistance genes through two rounds of amplification of LTR-Rs, occurred around 1.25 and 3.5 million years ago, respectively. The expansion also occurred in gene families related to drought tolerance. A number of 14,995,740 SNPs are identified by re-sequencing 65 <i>S. aethiopicum</i> genotypes including "Gilo" and "Shum" accessions, 41,046 of which are closely linked to resistance genes. The domestication and demographic history analysis reveals selection of genes involved in drought tolerance in both "Gilo" and "Shum" groups. A pan-genome of <i>S. aethiopicum</i> with a total of 36,250 protein-coding genes was assembled, of which 1,345 genes are missing in the reference genome.</p> <p>Conclusions Overall, the genome sequence of <i>S. aethiopicum</i> increases our understanding of the genomic mechanisms of its extraordinary disease resistance and drought tolerance. The SNPs identified are available for potential use by breeders. The information provided here will greatly accelerate the selection and breeding of the African eggplant as well as other crops within the Solanaceae family.</p>	
Corresponding Author:	Xin Liu, Ph.D. BGI CHINA	
Corresponding Author Secondary Information:		
Corresponding Author's Institution:	BGI	
Corresponding Author's Secondary Institution:		
First Author:	Bo Song	
First Author Secondary Information:		

Order of Authors:	Bo Song
	Yue Song
	Yuan Fu
	Elizabeth Balyejusa Kizito
	Pamela Nahamya Kabod
	Sandra Ndagire Kamenya
	Huan Liu
	Samuel Muthemba
	Robert Kariba
	Xiuli Li
	Sibo Wang
	Shifeng Cheng
	Alice Muchugi
	Ramni Jamnadass
	Howard Yana-Shapiro
	Allen Van Deynze
	Huanming Yang
	Jian Wang
	Xun Xu
	Damaris Achieng Odeny
Xin Liu, Ph.D.	
Order of Authors Secondary Information:	
Additional Information:	
Question	Response
Are you submitting this manuscript to a special series or article collection?	No
Experimental design and statistics	Yes
Full details of the experimental design and statistical methods used should be given in the Methods section, as detailed in our Minimum Standards Reporting Checklist . Information essential to interpreting the data presented should be made available in the figure legends.	
Have you included all the information requested in your manuscript?	
Resources	Yes

<p>A description of all resources used, including antibodies, cell lines, animals and software tools, with enough information to allow them to be uniquely identified, should be included in the Methods section. Authors are strongly encouraged to cite Research Resource Identifiers (RRIDs) for antibodies, model organisms and tools, where possible.</p> <p>Have you included the information requested as detailed in our Minimum Standards Reporting Checklist?</p>	
<p>Availability of data and materials</p> <p>All datasets and code on which the conclusions of the paper rely must be either included in your submission or deposited in publicly available repositories (where available and ethically appropriate), referencing such data using a unique identifier in the references and in the “Availability of Data and Materials” section of your manuscript.</p> <p>Have you have met the above requirement as detailed in our Minimum Standards Reporting Checklist?</p>	<p>Yes</p>

[Click here to view linked References](#)

Draft genome sequence of the *Solanum aethiopicum* provides insight into disease resistance, drought tolerance and evolution

Bo Song^{1,2,3} #, Yue Song^{1,3,4} #, Yuan Fu^{1,2} #, Elizabeth Balyejusa Kizito⁵, Pamela Nahamya Kabod⁵, Huan Liu^{1,2,3}, Sandra Ndagire Kamenya⁵, Samuel Muthemba⁶, Robert Kariba⁶, Prasad S. Hendre⁶, Xiuli Li^{1,2}, Wenjing Sun^{1,2}, Sibow Wang^{1,3}, Xiaoli Chen^{1,2}, Wenbin Chen^{1,2}, Shifeng Cheng^{1,2}, Alice Muchugi⁶, Ramni Jamnadass⁶, Howard-Yana Shapiro^{6,7,8}, Allen Van Deynze⁷, Huanming Yang^{1,2}, Jian Wang^{1,2}, Xun Xu^{1,2,3}, Damaris Achieng Odeny^{9,*}, Xin Liu^{1,2,3,*}.

1 BGI-Shenzhen, Beishan Industrial Zone, Yantian District, Shenzhen 518083, China;

2 China National GeneBank, BGI-Shenzhen, Jinsha Road, Shenzhen 518120, China;

3 State Key Laboratory of Agricultural Genomics, BGI-Shenzhen, Shenzhen 518083, China;

4 BGI-Qingdao, BGI-Shenzhen, Qingdao, 266555, China;

5 Uganda Christian University, Bishop Tucker Road, Box 4, Mukono, Uganda

6 African Orphan Crops Consortium, World Agroforestry Centre (ICRAF), Nairobi, Kenya

7 University of California, 1 Shields Ave, Davis, USA

8 Mars, Incorporated, USA

9 ICRISAT-Nairobi, Nairobi, Kenya

These authors contributed equally

*Corresponding to liuxin@genomics (X. L.) and D.Odney@cigar.org (D. A. O.)

Abstract

Background

The African eggplant *S. aethiopicum* is a close relative to *S. melongena* and has been routinely used to improve disease resistance in *S. melongena*. However, these efforts have been greatly limited by the lack of a reference genome and clear understanding of the genes involved during biotic and abiotic stress response.

Results

We present here a draft genome assembly of *S. aethiopicum* of 1.02 Gb in size, which is predominantly occupied by repetitive sequences (76.2%), particularly long terminal repeat elements. We annotated 37,681 gene models including 34,905 protein-coding genes. We observed an expansion of resistance genes through two rounds of amplification of LTR-Rs, occurred around 1.25 and 3.5 million years ago, respectively. The expansion also occurred in gene families related to drought tolerance. A number of 14,995,740 SNPs are identified by re-sequencing 65 *S. aethiopicum* genotypes including “Gilo” and “Shum” accessions, 41,046 of which are closely linked to resistance genes. The domestication and demographic history analysis reveals selection of genes involved in drought tolerance in both “Gilo” and “Shum” groups. A pan-genome of *S. aethiopicum* with a total of 36,250 protein-coding genes was assembled, of which 1,345 genes are missing in the reference genome.

Conclusions

Overall, the genome sequence of *S. aethiopicum* increases our understanding of the genomic mechanisms of its extraordinary disease resistance and drought tolerance. The SNPs identified are available for potential use by breeders. The information provided here will greatly accelerate the selection and breeding of the African eggplant as well as other crops within the Solanaceae family.

Keywords: *Solanum aethiopicum*; African eggplant; Genome; LTR-Rs; Resistance

Background

African eggplant, *Solanum aethiopicum*, is an indigenous non-tuberiferous *Solanum* crop, which is majorly grown in tropical Africa [1] and is important in Central and West Africa. The fruits and leaves are eaten fresh or cooked. It is reported to have medicinal value and its roots and fruits have been used to treat colic, high blood pressure and uterine complications in Africa (FAO). Experiments performed in rats showed that the methanol extract of *S. aethiopicum* has anti-inflammatory activity [2]. *S. aethiopicum* is generally classified into four groups based on the use; Gilo, Shum, Kumba and Aculeatum. As the most important group, Gilo has edible fruits, while Shum has small and bitter fruits; Kumba is usually used as a leafy vegetable; Aculeatum is used as rootstocks due to its excellent disease resistance nature (mansfeld.ipk-gatersleben.de).

Although *S. aethiopicum* is the second most cultivated eggplant, as an “orphan crop”, research and breeding investments are substantially lagging behind, compared to other Solanaceae relatives such as tomato, potato and eggplant, partly because of the lack of a reference genome sequence. Genomics-assisted breeding is an effective approach advancing the breeding of orphan crops. Attempts have been made to develop molecular markers for *S. aethiopicum* using *S. melongena* genome as a reference, but with a cost of compromising accuracy [3]. Another approach involves genome editing. Lemmon et al. (2018) mutated or pruned genes according to the structures of their orthologues in domesticated tomato, and rapidly improved three major productivity traits of a Solanaceae crop, *Physalis pruinose* using clustered regularly interspaced short palindromic repeats (CRISPR)–CRISPR-associated protein-9 nuclease (Cas9) (CRISPR–Cas9) [4]. Both approaches rely on the availability of genome and gene sequences.

Orphan crops also serve as gene reservoirs which are valuable to their crop relatives. For example, due to its cross-compatibility with *S. melongena* [5, 6] and its outstanding resistance to various pathogens including *Fusarium*, *Ralstonia* and

1 *Verticillium* [7-9], *S. aethiopicum* has been used to develop rootstocks [9] or improve
2 the disease resistance of *S. melongena* [10]. As the genomic basis of resistance in *S.*
3 *aethiopicum* is poorly understood, resistance improvement through interspecies cross
4 can be time consuming. This challenge could be overcome by locating resistance
5 genes and developing markers associated with the respective genes. The birth and
6 expansion of resistance genes are usually accompanied with the amplification of
7 LTR-Rs. A typical example is shown in hot pepper (*Capsicum annuum*), also a
8 Solanaceous vegetable. The burst of LTR-Rs has substantially mediated the
9 retrotransposition of NBS-LRR genes, leading to the expansion of resistance genes
10 [11]. LTR-Rs are abundant in plant genomes including those of Solanaceae crops,
11 such as *Nicotiana sylvestris* (~38.16%) [12], pepper (more than 70.0%) [13], potato
12 (62.2%) [14], tomato (50.3%) [15] and Petunia (more than 60%) [16]. The role of
13 LTR-Rs in the genome of *S. aethiopicum* is unknown. Whether the resistance of *S.*
14 *aethiopicum* is raised through LTR-Rs amplification remains to be investigated.
15 Overall, a reference genome for *S. aethiopicum*, as well as for other orphan crops, is
16 greatly needed to advance their research and breeding.

17
18
19 Here we report a draft assembly and annotation for *S. aethiopicum* genome. We found
20 two amplification of LTR-Rs that occurred around 1.25 and 3.5 million years ago
21 resulting in the expansion of resistance genes. We also re-sequenced two *S.*
22 *aethiopicum* genotypes, “Gilo” and “Shum”, at a high depth (~60 X) and identified
23 14,995,740 SNPs, 41,046 of which are closely linked to resistance genes, and
24 subsequently generated a pan-genome of *S. aethiopicum*. The genomic data provided
25 in this study will greatly advance the research and breeding activities of the African
26 eggplant.

27 **Data Description**

28
29 We sequenced the genome of *S. aethiopicum* using a whole-genome shotgun (WGS)
30 approach. A total of 242.61 Gb raw reads were generated by sequencing the libraries
31 with insert sizes of 250 and 500 bp, and mate-pair libraries with sizes ranging from
32 2,000 to 20,000 bp on an Illumina HiSeq 2000 platform. The filtered reads that were
33
34
35
36
37
38
39
40
41
42
43
44
45
46
47
48
49
50
51
52
53
54
55
56
57
58
59
60
61
62
63
64
65

1 used for downstream analysis are shown in Supplementary Table S1. The K-mer
2 (K=17) analysis [17] revealed that the *S. aethiopicum* genome is diploid and
3 homozygous with a genome size of 1.17 Gb (Figure S1). We used all the “clean reads”
4 of 127.83 Gb (~ 109 X) to assemble the genome using Platanus [18] (see methods),
5 and obtained a final assembly of 1.02 Gb in size containing 162,187 scaffolds with
6 N50 values of contigs and scaffolds of 25.2 Kbp and 516.15 Kbp (Table 1 and
7 Supplementary Table S2), respectively. Our results reveal that the *S. aethiopicum*
8 genome is larger than other *Solanum* genomes including tomato (0.76 Gb) and potato
9 (0.73 Gb) [14, 15], while its GC ratio (33.12%) is comparable (Supplementary Table
10 S3).
11
12
13
14
15
16
17
18
19
20
21

22 Repetitive elements, predominantly transposable elements (TE) (Supplementary Table
23 S4), occupied 790 Mbp (76.2%) of the sequenced genome. A majority of the
24 annotated TEs were retrotransposon elements including long terminal repeat elements
25 (LTR), short interspersed elements (SINEs) and long interspersed elements (LINEs).
26 These retrotransposons together occupied 75.42% of the assembly. DNA transposons
27 were also annotated, which accounted for 2.87% of the genome. Among these
28 annotated TEs, LTR-Rs were extraordinarily abundant and occupied 719 Mbp,
29 accounting for approximately 70% of the genome, followed by LINEs and SINEs
30 (Supplementary Table S4).
31
32
33
34
35
36
37
38
39
40
41

42 The protein coding gene models were predicted by a combination of homologous
43 search and *ab initio* prediction. The resulting models were pooled together to generate
44 a final set of 34,906 protein-coding genes. The predicted gene models had an average
45 of 3,038 bp in length, each with an average of 3.15 introns. The average length of
46 coding sequences, exons and introns were 1,104 bp, 265 bp and 613 bp, respectively
47 (Table 1, Supplementary Table S5 and Figure S2). These gene features were, as
48 expected, similar to those in other released genomes including *A. thaliana* [19], and
49 other Solanaceae crops including *S. lycopersicum*, *S. tuberosum*, *C. annuum* and *N.*
50 *sylvestris* [12, 14, 15, 20] (Supplementary Table S5). We further assessed the
51 annotation completeness of this assembly by searching for 1,440 Core Embryophyta
52
53
54
55
56
57
58
59
60
61
62
63
64
65

1 Genes (CEGs) with Benchmarking Universal Single-Copy Orthologs (BUSCO,
2 version 3.0) [21]. We found 80.4% CEGs in this assembly with 77.8% being single
3 copies while 2.6% were duplicates (Supplementary Table S6). We also annotated the
4 non-coding genes by homologous search, leading to the identification of 128
5 microRNA, 960 tRNA, 1,185 rRNA and 503 snRNA genes (Supplementary Table S7).
6
7
8
9

10
11 We annotated a total of 31,863 (91.28%) proteins for their homologous function in
12 several databases. Homologs of 31,099 (89.09%), 26,319 (75.4%), 20,932 (59.97%)
13 proteins were found in TrEMBL, InterPro and SwissProt databases, respectively
14 (Supplementary Table S8). The remaining 3,043 (8.72%) genes encoded putative
15 proteins with unknown functions.
16
17
18
19
20
21

22 **Analyses**

23 **Genome evolution and phylogenetic analysis**

24
25
26 By comparing with other four sequenced Solanaceae genomes of *S. melongena*, *S.*
27 *lycopersicum*, *S. tuberosum* as well as *C. annuum*, 25,751 of the *S. aethiopicum* genes
28 were clustered into 19,310 families using OrthoMCL (version 2.0) [22], with an
29 average of 1.33 genes each. Single-copy genes that were shared by these five
30 genomes were concatenated as a super gene representing each genome and were used
31 to build the phylogenetic tree (Figure 1A). The split time between *S. aethiopicum* and
32 *S. melongena* was estimated to be ~2.6 million years ago. One hundred and eighty
33 two (182) syntenic blocks were identified by McScanX [23]. We detected evidence of
34 whole genome duplication (WGD) events in this genome by calculating the pairwise
35 synonymous mutation rates and the rate of four-fold degenerative third-codon
36 transversion (4DTV) of 1,686 paralogous genes in these blocks. The 4DTV
37 distribution plot displayed two peaks, around 0.25 and 1, indicating two WGDs
38 (Figure 1B). The first one (peaked at 1) represents the ancient WGD event that is
39 shared by asterids and rosids [24], while the second WGD event is shared by
40 Solanaceae plants suggesting its occurrence predates the split of Solanaceae.
41
42
43
44
45
46
47
48
49
50
51
52
53
54
55
56
57
58
59
60
61
62
63
64
65

Evolution of Gene families

OrthoMCL [22] clustering of genes from *S. aethiopicum*, *S. melongena*, *S. lycopersicum*, *S. tuberosum* and *C. annuum* identified 25,751 gene families, among which 465 gene families were unique to *S. aethiopicum* and 10,166 were commonly shared (Supplementary Table S9, Figure 1C). As expected, the number of shared gene families decrease as a function of evolutionary distance between *S. aethiopicum* and the selected species (Supplementary Table S10). For example, *S. aethiopicum* shared 15,723 gene families with *S. melongena* as compared to only 13,461 genes shared with *C. annuum*. To further investigate the evolution of gene families, we identified expanded and contracted gene families. Compared to *S. melongena*, 437 gene families were expanded and the majority of the expanded gene families were found to be involved in biological processes related to drought or salinity tolerance as well as disease resistance including defense response (GO:0006952), response to oxidative stress (GO:0006979), glutamate biosynthetic process (GO:0006537) and response to metal ion (GO:0010038) (Supplementary Table S11). On the other hand, there was no gene family contracted when comparison was made with *S. melongena*.

Amplification of LTR-Rs

LTR retrotransposons (LTR-Rs) comprised ~70% of the genome and accounted for 89.31% of the total TEs in *S. aethiopicum* (Supplementary Table S4). Consistent with previous studies of LTR-Rs, a majority of the LTR-Rs were classified into *Ty3/Gypsy* (account for 82.36% of total LTR-Rs) and *Ty1/Copia* (account for 14.90% of total LTR-Rs) subfamilies. The proportion of *Ty3/Gypsy* and *Ty1/Copia* LTR-Rs in *S. aethiopicum* is also comparable to those reported in other Solanaceae genomes. To investigate the roles of LTR-Rs in the evolution of *S. aethiopicum*, we detected 36,599 full-length LTR-Rs using LTRharvest [25] with the parameters “-maxlenltr 2000,-similar 75” and LTRdigest software [26]. We further analyzed their evolution, activity and potential biological functions.

1 The age of each LTR retrotransposon was inferred by comparing the divergence
2 between the 5' and 3' LTR-Rs using a substitution rate of $1.3e-8 \text{ year}^{-1}\text{site}^{-1}$ [27]. Two
3 amplifications of LTR retrotransposons were found in *S. aethiopicum* while only one
4 was detected in tomato and hot pepper (Figure 2A). The early amplification occurred
5 at around 3.5 million years ago (MYA), coincident with the LTR-Rs burst found in *C.*
6 *annuum* [11] (Figure 2A); the second amplification was 1.25 MYA coinciding with
7 the burst in tomato genome [15] (Figure 2A). Although the time of LTR-Rs
8 amplification is vertically coincident between different species, they occurred
9 separately in each genome since *S. aethiopicum* and hot pepper had split about 20
10 MYA (Figure 1A), and about 4 MYA between *S. aethiopicum* and tomato (Figure 1A).
11 These results imply that environmental stimulators shared between these species
12 during their evolution could have triggered the amplifications observed. We also
13 estimated the amplification time of *Ty3/Gypsy* and *Ty1/Copia* LTR-Rs and found two
14 peaks of around 1.25 and 3.5 MYA for Gypsy LTR-Rs (Figure 2B), while only one
15 peak (around 1.25 MYA) for *Ty1/Copia* LTR-Rs (Figure 2C). Compared with the
16 amplification time of *Ty3/Gypsy* and *Ty1/Copia* LTR-Rs in different species, we found
17 that the insertion time of *Ty1/Copia* LTR-Rs in *S. aethiopicum* and tomato were
18 earlier than that of *S. melongena* and hot pepper. On the contrary, the insertion time of
19 *Ty3/Gypsy* LTR-Rs (around 3.5 MYA) in *S. aethiopicum* was consistent with the
20 insertion time of hot pepper (Figure 2B,2C).

21 To investigate the activities of these LTR-Rs, we measured their expression levels by
22 using RNA-seq data from different tissues (see method). The younger LTR-Rs were
23 expressed in higher levels than those of older LTR-Rs. We detected two peaks of
24 LTR-Rs activities at positions corresponding to the two rounds of LTR-Rs insertions
25 (Figure 2D-G). The slight shift of the former peaks indicates that the activities
26 degenerated slower than the sequences of LTR-Rs (Figure 2D-G). The LTR-R
27 activities varied across these tissues. The degeneration of LTR-R activities was slower
28 in fruits and roots, compared to those in flowers and leaves (Figure 2D). This pattern
29
30
31
32
33
34
35
36
37
38
39
40
41
42
43
44
45
46
47
48
49
50
51
52
53
54
55
56
57
58
59
60
61
62
63
64
65

1 was also confirmed by the varied activity of each LTR-Rs across these tissues (Figure
2 2D), which implies that these LTR-Rs play different roles in development.
3
4

5 **Increased resistance is facilitated by LTR-Rs amplification**

6

7
8 We identified 1,156 LTR-Rs captured genes and 491 LTR-Rs disrupted genes. The
9 insertion time of LTR-Rs captured and LTR-Rs disrupted genes both ranged from 1.5
10 to 3.5 MYA (Figure 3A), showing a pattern similar to the whole LTR-Rs insertions
11 (Figure 2A). These results suggest that gene disruption and capturing mediated by
12 LTR-Rs occurred simultaneously. We further classified the LTR-Rs captured genes
13 into gene ontology (GO) categories and performed GO enrichment analysis. GO terms
14 related to disease resistance including “defense response to fungus (GO:0006952)”,
15 “chitin catabolic process (GO:0006032)”, “chitinase activity (GO:0004568)”, “chitin
16 binding (GO:0008061)”, “cell wall macromolecule catabolic process (GO:0016998)”
17 and “defense response to bacterium (GO:0042742)” were significantly
18 overrepresented in the LTR-Rs captured genes (Figure 3B, Supplementary Table S12),
19 suggesting a likely role of enhancing disease resistance.
20
21
22
23
24
25
26
27
28
29
30
31
32

33
34 We also analyzed the expression of genes captured by LTR-Rs. It was intriguing to
35 find that a majority of these genes were specifically active in only one tissue (Figure
36 S3). Among these genes, 159 (13.75%), 105 (9.08%), 106 (9.16%) and 129 (11.15%)
37 were specifically highly expressed in root, leaf, flower and fruit, respectively. We
38 observed that the genes captured by LTR-Rs that were specifically active in leaf
39 tissues were significantly enriched in functions related to disease resistance
40 (Supplementary Table S13). The biological processes and molecular activities related
41 to disease resistance mentioned above were overrepresented in these genes (Figure
42 3C). The high expression level of resistance genes in leaves would arm the plant with
43 stronger resistance to pathogens. On the contrary, these GO terms were not enriched
44 in the total leaf-specifically highly expressed genes. Instead, as expected,
45 “photosynthesis” and “photosystem I” were significantly overrepresented
46
47
48
49
50
51
52
53
54
55
56
57
58
59
60
61
62
63
64
65

1 (Supplementary Table S14). The discrepancy between these two gene sets highlights
2 the contribution to resistance of LTR-captured genes.
3

4
5 Proteins containing nucleotide-binding site and leucine-rich repeat domains
6 (NBS-LRRs) are major components responsible for defense against various
7 phytopathogens [28]. The NBS-LRRs family is highly expanded in plants with
8 numbers ranging from less than 100 to more than 1000 [29, 30]. As NBS-LRR genes
9 are often co-localized with LTR-Rs [31], we inspected their genomic locations in *S.*
10 *aethiopicum* genome. We identified a total of 447 NBS-LRR genes in the genome,
11 among which 62 (13.8%) NLR genes co-localized with LTR-Rs were identified as
12 LTR-Rs captured genes. A similar percentage (~13%) of LTR-captured NLR genes
13 was also reported in hot pepper [11]. The phylogenetic tree shows a substantial
14 expansion of NLRs after the amplification of LTR in *S. aethiopicum* (Figure 3D). A
15 similar expansion was also observed in eggplant. However, the number was
16 significantly fewer than that in *S. aethiopicum*, probably due to the limited number of
17 LTR-Rs in eggplant genome (Supplementary Table S15).
18
19
20
21
22
23
24
25
26
27
28
29
30
31

32 **Polymorphisms in different *S. aethiopicum* groups**

33
34 We totally sequenced 60 *S. aethiopicum* genotypes in two major groups, “Gilo” and
35 “Shum” and 5 accessions of *S. anguivi*, the ancestor of *S. aethiopicum*. By sequencing
36 each accession with ~ 60 Gb raw data (60 X) (Supplementary Table S16), we
37 identified a total of 18,614,838 SNPs and 1,999,241 indels, with an average of
38 3,530,488 SNPs for each accession. On average, there were 18,090 SNPs and 1,943
39 indels per megabase. Among them, 426,401 (2.07%), 821,101 (3.98%) and
40 19,374,353 (93.99%) were located in exons, introns and intergenic regions
41 respectively (Table 2). There were 267,710 SNPs that resulted in changes of amino
42 acid sequences by introducing new start codons, premature stop codons, or
43 nonsynonymous substitutions (Table 2). In addition, we also identified 1,999,241
44 indels and 1,255,302 structural variations (SVs). Of the detected indels, 178,260
45 (8.90%) were located in genic regions, among which 2,977 (0.13%) caused frame
46
47
48
49
50
51
52
53
54
55
56
57
58
59
60
61
62
63
64
65

1 shift changes and, therefore, resulted in changes of amino acid sequences that may
2 have led to malfunction of genes. Furthermore, 106,377 SVs were identified in gene
3 regions including 53,736 (50,51%) deletions, 34,368 (32,31%) insertions and 8,872
4 (8.34%) duplications.
5
6
7

8
9 We counted the SNPs and indels in each group. As a result, 12,777,811, 15,165,053
10 and 8,557,818 SNPs were found in “Gilo”, “Shum” and “*S. anguivi*”, accounting for
11 68.64%, 81.47% and 45.97% of the total SNPs, respectively. There were, 2,019,539
12 (10.85%), 4,747,418 (25.50%) and 587,885 (3.16%) SNPs that were unique to
13 “Gilo”, “Shum” and “*S. anguivi*” respectively (Figure 4A). The majority (93.13%) of
14 SNPs in “*S. anguivi*” were shared with either “Gilo” or “Shum” (Figure 4A), which is
15 in line with the fact that “*S. anguivi*” is the ancestor [32]. Similarly, 92.62% of the
16 indels identified in “*S. anguivi*” were also share with “Gilo” or “Shum” (Figure 4B).
17
18
19
20
21
22
23
24
25
26

27 Nucleotide diversity (π) of all the genotypes was determined to be 3.58×10^{-3} for
28 whole genomes, 2.06×10^{-3} for genic regions and 3.75×10^{-3} for intergenic regions.
29 Nucleotide diversity for each genotype revealed lower diversity for “Gilo” (*S. anguivi*:
30 3.16×10^{-3} , Shum: 3.65×10^{-3} and Gilo: 2.55×10^{-3}). Linkage disequilibrium (LD)
31 estimation using Haploview (version 4.2) [33] revealed that r^2 reaches the half
32 maximum value at ~150 kb (Figure 4C), which is smaller than in other Solanaceae
33 crops, for example, tomato (2,000 kb) [34]. Since *S. aethiopicum* has been routinely
34 used to improve disease resistance in eggplant and other Solanaceae crops [10], we
35 further identified SNPs strongly associated with resistance genes by selecting those
36 within 150 kb of resistance genes. A total of 5,562 SNPs were finally selected (205
37 genes), which could be used to assist the selection of plants with disease resistance
38 (Supplementary Table S16).
39
40
41
42
43
44
45
46
47
48
49
50
51
52

53 **Population structure and demography of *S. aethiopicum***

54
55

56 To investigate the evolution and population demography of *S. aethiopicum*, we first
57 built a maximum-likelihood (Figure 5A) phylogenetic tree using the full-set of SNPs.
58
59
60
61
62
63
64
65

1 We observed population structure in the genome-wide diversity. As anticipated, the
2 accessions from “Gilo” and “Shum” were clearly separated in the tree, with only one
3 exception in each group, probably due to labelling errors. On the other hand,
4 accessions of “*S. anguivi*”, which is the known ancestor of *S. aethiopicum*, did not
5 cluster separately, but instead, grouped with either “Gilo” or “Shum”. This structure
6 was also supported by principal-component analysis (PCA), which clearly separated
7 these accessions into two clusters (Figure 5B and Figure S4).
8
9

10 The domestication history of *S. aethiopicum* was also inferred by constructing a
11 multi-level population structure using ADMIXTURE [35], which enabled us to
12 estimate the maximum likelihood ancestry (Figure 5A). The parameter K,
13 representing the number of sub groups to be divided, were set from 2 to 9, and the
14 cross-validation error was calculated individually. The cross-validation (CV) error
15 converged to 0.4375 when K = 6, therefore, the population was divided into six
16 sub-groups, I, II, III, IV, V and VI (Figure 5A). The structure changes along with the
17 increase of K from 2 to 6 showed a time lapse domestication history of *S. aethiopicum*,
18 which was first split into two groups, “Gilo” and “Shum”. The former was
19 subsequently divided into sub-groups I and II. Two groups emerged in “Shum” when
20 K = 3, each of which was then divided into two sub-groups when K = 6. In summary,
21 “Gilo” was divided into two sub-groups (I and II) and “Shum” was divided into four
22 sub-groups (III, IV, V and VI).
23
24
25
26
27
28
29
30
31
32
33
34
35
36
37
38
39
40
41
42
43

44 Furthermore, the demographic history of *S. aethiopicum* was inferred using the
45 pairwise sequential Markovian coalescent model PSMC [36]. By doing this, we
46 inferred the changes of effective population sizes of *S. aethiopicum* (Figure 5C). Our
47 data revealed the distinct demographic trends from 10,000 to 100 years ago, in which
48 a bottleneck was shown around 4,000-5,000 years ago, followed by an immediate
49 expansion of population size. The great expansion of population might be due to the
50 early consumption of *S. aethiopicum* in Africa because it is coincidence with the
51 human population growth in western Africa occurring 4,000-5,000 years ago [37].
52
53
54
55
56
57
58
59
60
61
62
63
64
65

Artificially selected genes in *S. aethiopicum*

We used *ROD* and *Fst* measure to detect artificially selected regions along the genome. Briefly, *ROD* and *Fst* were calculated in a sliding non-overlap 10 kb-window, and regions with *ROD* > 0.75 and *Fst* > 0.15 were identified as candidate regions under selection. As a result, genomic regions of 3,238 and 1,062 windows were found to be under selection during the domestication of “Gilo” and “Shum”, respectively (Supplementary Table S17). Among them, 161 windows were commonly shared in these two groups while 3,077 and 901 windows were unique to “Gilo” and “Shum”, respectively. Genes located at these regions were identified as selected genes. A number of 1,406 and 36 selected genes were identified in “Gilo” and “Shum”, respectively, of which 12 genes were selected in both. GO enrichment analysis showed that genes selected in both the groups were enriched in “transport” (Supplementary Table S18). In addition, GO terms of “response to auxin”, “response to hormone”, “response to salt stress” and “response to water” were overrepresented in genes selected only in “Gilo” or “Shum”. This result explains the enhanced tolerance to drought and salinity in *S. aethiopicum*.

Furthermore, we focused on the diversity of genes co-localized with LTR-Rs. A number of 24,682 SNPs were located within these genes, corresponding to 0.133% of the total number of SNPs (18,614,838), which is substantially fewer than would be expected if SNPs were evenly distributed in all the genes, especially because the LTR-R co-localized genes comprise 3.31% of the total gene set. The repellent of SNPs in these genes suggests purifying selection, which was also supported by the large amount (9,728, 39.41%) of rare SNPs (minor allele frequency < 5%) found in these genes. Nevertheless, we also noticed that nonsynonymous SNPs (9,544) were much more abundant than synonymous ones (5,310) in these genes. These variations led to amino acid changes in the encoded proteins, which may have contributed to the diversification of resistance genes.

Pan- and core-genome of *S. aethiopicum*

1 Gene content varies across different accessions. A single reference assembly is not
2 sufficient to include all the genes of *S. aethiopicum*. Therefore, we assembled contigs
3 for each individual accession using pair-ended reads with coverages of 30 - 60 X
4 (Supplementary Table S19).
5
6
7

8
9 We assembled the genomes individually using SOAPdenovo2 [38] and filtered out
10 contigs smaller than 2 kb. As a result, 753,084 contigs were retained, among which
11 432,785 were from “Shum”, 260,119 were “Gilo” and 60,180 were from “*S. anguivi*”.
12 These contigs were further pooled separately and cleaned by removing duplicates
13 using CD-HIT [39], which led to the retention of 97,429, 76,638 and 36,915 contigs
14 for “Shum”, “Gilo” and “*S. anguivi*”, respectively. The annotation of these contigs
15 resulted in 41,626, 22,942 and 17,726 protein-coding genes, among which we
16 identified accessory gene sets of 29,389, 23,726 and 12,829 for “Shum”, “Gilo” and
17 “*S. anguivi*”, respectively, by comparing with the reference genome. We generated a
18 pan-genome of *S. aethiopicum* of 51,351 genes (Supplementary Table S20). The
19 average length of accessory genes was 1.62 kb with 2.22 introns, comparable to gene
20 models in the reference, suggesting they were accurately annotated. We further
21 annotated their putative functions by querying against protein databases. As a result, a
22 total of 48,572 (94.59%) genes were annotated with function descriptions (Table 20
23 and Supplementary Table S21). Among all the identified gene models, 21,711
24 (44.28%) were commonly shared by these three groups and defined as core genes. As
25 expected, they were majorly composed of house-keeping genes (Supplementary Table
26 S22). However, a caveat should be noted that the number of core genes was under
27 estimated because “*S. anguivi*” was inadequately represented and the other two groups
28 of *S. aethiopicum*, “Kumba” and “Aculeatum”, were not included in this study.
29
30
31
32
33
34
35
36
37
38
39
40
41
42
43
44
45
46
47
48
49
50

51 Discussion

52 As a close relative, *S. aethiopicum* is compatible to *S. melongena* and routinely used
53 to improve disease resistance of *S. melongena* by providing resistance genes [10]. The
54 genomic analysis of *S. aethiopicum* revealed expansion of resistance gene families
55
56
57
58
59
60
61
62
63
64
65

1 compared to its close relatives including tomato, potato, eggplant and hot pepper,
2 which is mediated by LTR amplifications. LTR amplification is one of the major
3 forces driving genome evolution. It shapes the genome by capturing, interrupting or
4 flanking genes [40]. The consequences of LTR insertions depend on the genomic
5 position of insertion. For example, inserting into protein coding sequences results into
6 the pseudogenization. LTR-Rs adjacent to protein coding genes can down regulate or
7 silence the expression of flanking genes by extending methylation region or by
8 producing anti-sense transcripts [41-44]. In addition, LTR-Rs also mediate gene
9 retroposition, capturing genes back into the genome [40]. During LTR amplification,
10 LTR preferentially captured genes related to disease resistance. GO terms of related to
11 disease resistance were over-represented in LTR-captured genes. Particularly, the
12 enrichment of terms of “chitin binding (GO:0008061)” and “chitinase activity
13 (GO:0006032)” (Figure 3B, Supplementary Table S12) implies that these genes were
14 selected to resist the infection of fungal pathogens, such as *Fusarium oxysporum* [45].
15 On the contrary, there was no GO term enriched in genes disrupted by LTR-Rs. It
16 seems gene disruption by LTR-Rs is a random event in term of gene function. The age
17 distribution of LTR-Rs captured genes coincidentally fit with that of the LTR-disrupted
18 genes, suggesting they were occurred simultaneously (Figure 3A). Why genes related
19 to resistance were favored by LTR-Rs? An explanation to this bias is that these genes
20 were more active than other genes when LTR retrotransposition occurred. The
21 expression pattern of LTR-Rs captured genes varied among different tissues. Those
22 related resistance are specifically active in leaf, while those engaged in transport of
23 cation, nitrogen transport and cell proliferation are active in flower. These data
24 suggest low abundance of transcripts of resistance genes, therefore small chance to be
25 captured, in flower under normal conditions. A possible scenario is that LTR
26 retrotransposition occurred under stressed conditions, which activated the expression
27 resistance genes in gamete, and simultaneously the activity of LTR retrotransposition.
28 These stresses could be extreme temperature or pathogen infection and so on. In
29 another organism, a “reinforcement model” was proposed to explain the accumulation
30 of stress responsive genes in the genome, in which environmental stress activates both
31
32
33
34
35
36
37
38
39
40
41
42
43
44
45
46
47
48
49
50
51
52
53
54
55
56
57
58
59
60
61
62
63
64
65

1 the expression of stress responsive genes and the activities of retrotransposons,
2 resulting in higher probabilities of retrotransposition for stress responsive genes [46,
3 47].
4
5
6

7 There were four major groups of *S. aethiopicum*, “Gilo”, “Shum”, “Kumba” and
8 “Aculeatum”. In this work, we re-sequenced accessions from the former two groups,
9 which were widely consumed. The accessions re-sequenced in this study was divided
10 into six sub-groups (2 for “Shum” and 4 for “Gilo”). By scanning for regions with
11 lower diversities in the genome, we identified regions and genes under selection
12 during domestication of *S. aethiopicum*. A number of genes involved in responses to
13 salt, water and drought tolerance were selected. Furthermore, purification selection
14 was also found in resistance genes.
15
16
17
18
19
20
21
22
23

24 In this work, the genomes of *S. aethiopicum* accessions were sequenced with high
25 depth (30 – 60 X) (Table S19), which enabled us to assemble the contigs for each
26 individual. Despite there were only genotypes from two groups were included in this
27 study, we intended to supplement the reference gene set with accessory genes by
28 pooling these contigs together for gene prediction and annotation. These “pan-genome”
29 would provide a more comprehensive understanding of *S. aethiopicum*.
30
31
32
33
34
35
36
37

38 Overall, we present a reference genome for African eggplant, which will provide the
39 basic data resource for the further genomic research and breeding activities within *S.*
40 *aethiopicum*. For example, the gene sequences annotated in the genome are essential
41 for developing genome editing vectors aiming to create null or weakened mutants.
42 Molecular markers developed using the genome sequences will also enable fast and
43 precise selection of superior accessions by breeders.
44
45
46
47
48
49
50

51 **Potential implications**

52

53 A great number of indigenous crops grown and used locally by smallholders in Africa
54 had played critical roles in alleviating malnutritional and food shortage problems in
55 rural areas of Africa. Most of these crops are hardly known by scientists and
56
57
58
59
60
61
62
63
64
65

1 consumers out of these areas, and therefore obtained very little investment in
2 scientific research and production. These crops are called “orphan crop”, “neglected
3 crops” or “forgotten crops”. African orphan crop consortium (AOCC) was established
4 in 2012 with an aim to address the food and nutritional security in Africa by using 101
5 of selected orphan crops that were originated or naturalized in Africa. One effective
6 approach of boosting the research and breeding level of these orphan crops is to
7 sequence their genomes, which would enable genome-assisted selection and precise
8 edition of their genomes. Five genomes of orphan crops including *Vigna subterranea*,
9 *Lablab purpureus*, *Faidherbia albida*, *Sclerocarya birrea*, and *Moringa oleifera* were
10 recently released [48]. *S. aethiopicum* is also one of these selected orphan crops. The
11 genome sequence released in this work will benefit the research and production of this
12 crop.
13
14
15
16
17
18
19
20
21
22
23
24
25
26
27
28
29
30
31
32
33
34
35
36
37
38
39
40
41
42
43
44
45
46
47
48
49
50
51
52
53
54
55
56
57
58
59
60
61
62
63
64
65

Methods

DNA extraction, library construction and sequencing, and genome assembly

High molecular genomic DNA was extracted from young leaves of *S. aethiopicum* and then fragmented and used to construct paired-end libraries with insert sizes of 250 bp, 500 bp, 2 kb, 6 kb, 10 kb and 20 kb following standard Illumina protocols. These libraries were then sequenced on an Illumina HiSeq 2000 platform. A total of 242.61 Gb raw reads were generated by sequencing these libraries. Filtering of duplicated, low quality reads and reads with adaptors was done using SOAPfilter (version 2.2, an application included in the SOAPdenovo package) [38]. We used 17 k-mer counts [17] of high-quality reads from small insert libraries to evaluate the genome size and heterozygosity using GCE [49] and Kmergenie [50]. We assembled the genome using Platanus [18].

Genomic DNA used for re-sequencing was extracted from young leaves of 65 accessions. The DNA was sheared into small fragments of ~ 200 bp and used to construct paired-end libraries following standard BGI protocols and subsequently sequenced on a BGI-500 sequencer. Ultra-deep data was produced for each accession with coverage ranging from ~45 to ~75 (Supplementary Table S19).

RNA extraction, library construction and sequencing

For RNA extraction, seeds of Gilo and Shum inbred lines were obtained from Uganda Christian University. The seeds were planted in a screen house at the BecA-ILRI Hub (Nairobi, Kenya) in PVC pots (13cm height and 11.5cm diameter) containing sterile forest soil and farmyard manure (2:1). The seedlings were later transplanted into larger PVC pots of 21cm height and 14cm diameter. Plants were raised in a screen house at 21-23°C and 11-13°C day and night temperatures respectively (average 12 light hours per day). The plants were regularly watered to maintain moisture at required capacity.

Two plants were selected randomly from each of Gilo and Shum accessions and

1 tagged at seedling stage for tissue sampling. Fresh tissues were sampled from each of
2 the tagged plants and flash-frozen in liquid nitrogen immediately. Total RNA was
3 extracted from the frozen tissues using the ZR Plant RNA Miniprep™ Kit (Zymo
4 Research, CA, USA) according to the manufacturer's instructions. RNA integrity was
5 evaluated by electrophoresis in denaturing agarose gel (1% agarose, 5% formamide,
6 1X TAE) stained with 3x Gel Red (Biotium Inc., CA, USA). The RNA was quantified
7 using the Qubit RNA Assay Kit (Life Technologies, Thermo Fisher Scientific Inc.).
8 Ribosomal RNA (rRNA) was removed from 4µl of total RNA of each sample using
9 Epicentre Ribo-zero™ rRNA Removal Kit (Epicentre, Madison, WI, USA). The
10 rRNA-depleted RNA was then used to generate strand-specific RNA-seq libraries
11 using TruSeq® Stranded mRNA Kit (Illumina, San Diego, CA, USA). In total, 20
12 mRNA libraries were prepared, multiplexed (10 samples at a time) and sequenced as
13 paired-end reads on the MiSeq (Illumina) platform at the BecA-ILRI hub.
14
15
16
17
18
19
20
21
22
23
24
25
26
27

28 **Repeat annotation**

29 Tandem repeats were searched in the genome using Tandem Repeats Finder (TRF for
30 short, version 4.04) [51]. Transposable elements (TEs) were identified by a
31 combination of homology-based and *de novo* approaches. Briefly, the assembly was
32 aligned to known repeats database (Repbase16.02) using RepeatMasker and
33 RepeatProteinMask (version 3.2.9) [52] at both the DNA and protein level. In *de novo*
34 approach, RepeatModeler (version 1.1.0.4) [53] was employed to build a *de novo*
35 repeat library using *S. aethiopicum* assembly, in which redundancies were filtered out
36 before TEs in the genome were identified by RepeatMasker [52]. Long terminal
37 repeats (LTR) were identified using LTRharvest [25] with a criterion of 75%
38 similarity on both sides. LTRdigest [26] was used to identify the internal elements of
39 LTR-Rs with the eukaryotic tRNA library (<http://gtrnadb.ucsc.edu/>). Identified
40 LTR-Rs includes intact PPT (poly purine tract) and PBS (primer binding site) with
41 long terminal repeats regions (LTR-Rs) on both sides were considered as the final
42 intact LTR-Rs, and were then classified into super-families, *Gypsy* and *Copia*, by
43 querying against Repbase16.02 [54].
44
45
46
47
48
49
50
51
52
53
54
55
56
57
58
59
60
61
62
63
64
65

Annotation of gene models and ncRNA

Gene models were predicted with a combination of *de novo* prediction, homology search and RNA-aided annotation. Augustus software [55] was used to perform *de novo* prediction after the annotated repeats were masked in the assembly. To search for homologous sequences, protein sequences of other four closely related species (*S. lycopersicum*, *S. tuberosum*, *C. annuum*, *N. sylvestris*) together with *Arabidopsis thaliana* were used as query sequences to search the reference genome using TBLASTN [56] with the e-value $\leq 1e-5$. Regions mapped by these query sequences were subjected to GeneWise [57] together with their flanking sequences (1000 bp) to identify the positions of start/stop codon and splicing. For RNA-aided annotation, the RNA-seq data from different tissues of *S. aethiopicum* were mapped to the assembly of *S. aethiopicum* genome using HISAT [58]. Good quality transcripts were assembled using StringTie [59]. GLEAN software [60] was used to integrate mapped transcripts from different sources to produce a consensus gene set. tRNAscan-SE [61] was performed to search for reliable tRNA positions. snRNA and miRNA were detected by searching the reference sequence against Rfam database [62] using the Blast software package [56]. rRNAs were detected by aligning with BLASTN [56] against known plant rRNA sequences (www.plantrdnadatabase.com). For functional annotation, protein sequences were searched against the Swissprot, TrEMBL, KEGG (Release 88.2), InterPro, Gene Ontology, COG and Non-redundant protein NCBI databases [63-67].

Gene family analysis

Proteins of *S. lycopersicum*, *S. aethiopicum*, *S. tuberosum*, *C. annuum* and *S. melongena* were selected to perform all-against-all comparison using BLASTP [56] with e-value cutoff of $\leq 1e-5$. OrthoMCL [22] and default MCL inflation parameter of 1.5 was used to define the gene families. Single-copy families were selected to perform multiple sequence alignment by using MAFFT [68]. Fourfold degenerate sites were picked and used to construct a phylogenetic tree based on the maximum

1 likelihood method by PhyML [69] with *C. annuum* as the outgroup. WGD analysis
2 was achieved through the identification of collinearity blocks by paralog gene pairs in
3 MCscanX [23]. Each aligned paralog gene pairs were concatenated to a
4 super-sequence in one collinearity block and 4dTv (transversion of fourfold
5 degenerate site) values of each block were calculated. We also determined the
6 distribution of 4DTv values in order to estimate the speciation between species or
7 WGD events. The divergence time of *S. aethiopicum* was estimated using MCMCtree
8 programme [70] with the constructed phylogenetic trees and the divergence time of *C.*
9 *annuum* [20] and *S. tuberosum* [14].

20 **Analysis of LTR-Rs**

21
22 The insertion times of identified intact LTR-Rs were estimated based on the sequence
23 divergence between the 5' and 3' LTR of each element. The nucleotide distance K
24 between one pair of LTR-Rs was calculated using the Kimura 2-parameter method in
25 the Distmat (EMBOSS package) [71]. An average base substitution rate of 1.3e-8 [27]
26 was used to estimate the insertion time based on the formula $T = K / 2r$ [11].
27
28

29
30
31
32
33
34 Transcriptomic data were used to analyze the activity of intact LTR-Rs. After filtering
35 and removing the low-quality reads, we mapped the high quality reads from each
36 against the full length LTR-Rs sequence using BWA-MEM software [72] with default
37 parameters. The expression levels of intact LTR-Rs was calculated using EdgeR
38 package [73] and visually presented by the heatmap in R package [74].
39
40
41
42
43
44

45 **Analysis of NLR genes**

46
47 To identify NB-ARC genes in the *S. aethiopicum* genome, we used the HMM profile
48 of the NB-ARC domain (PF00931) as a query to perform an HMMER search (version
49 3.2.1, <http://hmmer.org/>) against protein sequences of tomato, potato, hot pepper [14,
50 15, 20] and annotated sequences of *S. aethiopicum* with e-value cut-off of $\leq 1e-60$.
51
52 The aligned NB-ARC domain sequences of *S. aethiopicum* were extracted and used to
53
54
55
56
57
58
59
60
61
62
63
64
65 build the *S. aethiopicum*-specific HMM model. The NB-ARC domain sequences of

1 tomato, potato and hot pepper were mapped as the query sequences against *S.*
2 *aethiopicum* genome using TBLASTN [56] with e-value cut-off of $\leq 1e-4$ in
3 GeneWise software [57] in order to identify candidate NLR genes at a whole genome
4 level. Final NLR genes were confirmed by searching the genome with *S.*
5 *aethiopicum*-specific HMM model constructed above with e-value cut-off of $\leq 1e-4$.
6 The retroduplicated NLRs were identified according to the method of Kim et al.
7 (2017) and the phylogenetic tree of both *S. aethiopicum* and *S. melongena* NLRs was
8 constructed using FastTree [75] with default parameters.
9

17 **SNP Calling**

20 Genome Analysis Toolkit (GATK) pipeline (<https://software.broadinstitute.org/gatk/>)
21 was used to call SNPs and indels. Briefly, low quality, duplicated and
22 adaptor-contaminated reads were filtered off using SOAPfilter (version 2.2) [38]
23 before further processing. To reduce the computing time, we sequentially linked
24 scaffolds in the assembly into 24 pseudo-chromosomes, in which the original
25 scaffolds were separated by 100 Ns before mapping of reads using BWA [72] with
26 default parameters. Picard-tools (<https://broadinstitute.github.io/picard/>) and
27 SAMtools [76] were used to further process the alignment outputs including sorting
28 and marking of duplicates. After alignment and sorting, GATK pipeline (version
29 4.0.11.0, <https://software.broadinstitute.org/gatk/>) was used to call SNPs by
30 sequentially implementing the following modules: RealignerTargetCreator,
31 IndelRealigner, UnifiedGenotyper, samtools mpileup, samtools mpileup,
32 VariantFiltration, VariantFiltration, BaseRecalibrator, AnalyzeCovariates, PrintReads,
33 HaplotypeCaller. This pipeline produced a file in gvcf format displaying the called
34 SNPs and indels, which were further filtered according to genotype information
35 before they were further analyzed using PLINK software [77] for quality control with
36 “GENO>0.05, MAF<0.1, HWE test p-value ≤ 0.0001 ” parameters. The loci of these
37 SNPs and indels were anchored back to the original scaffolds and annotated using
38 snpEff [78]. To identify structural variations (SVs), sample information was added
39 using AddOrReplaceReadGroups, a module of Picard-tools, and SVs were detected
40
41
42
43
44
45
46
47
48
49
50
51
52
53
54
55
56
57
58
59
60
61
62
63
64
65

1 using DiscoverVariantsFromContigAlignmentsSAMSpark, a module of GATK.
2
3
4
5

6 **Population analysis**

7
8
9 A Maximum-Likelihood phylogenetic tree was constructed based on the genotypes at
10 all the SNP loci using FastTree [75] with default parameters. To perform Principal
11 Component Analysis (PCA), Beagle4.1 [79] was used to impute the unphased
12 genotypes. All the imputed and identified genotypes at SNP loci were pooled and
13 finalized using PLINK [77] and iTools [80], which were then subjected to PCA
14 analysis using a software GCTA [81]. The population was clustered using
15 ADMIXTURE software [35] with K (the expected number of clusters) increasing
16 from 2 to 9. The K value with the minimum cross-validation error was eventually
17 selected.
18
19
20
21
22
23
24
25
26
27

28
29 Genome-wide linkage disequilibrium (LD) was calculated for populations of different
30 groups using Haploview (<https://www.broadinstitute.org/haploview/haploview>) in
31 windows of 2,000 kb. Briefly, the correlation coefficient (r^2) between SNP pairs in a
32 non-overlapping sliding 1 kb bin was calculated and then averaged within bins.
33
34
35
36
37

38
39 We identified candidate regions under selection by comparing polymorphism levels,
40 measured by *ROD* as well as F_{ST} , between “Gilo”, “Shum” and “*Solanum anguivi*”
41 groups. *ROD* was calculated following the formula of: $ROD = 1 - \pi_{cul}/\pi_{wild}$, where
42 π_{cul} and π_{wild} denote the nucleotide diversity within the cultivated and wild populations,
43 respectively. F_{ST} measurement was calculated according to the formula: $F_{ST} =$
44 $(\pi_{between} - \pi_{within}) / \pi_{between}$. where $\pi_{between}$ and π_{within} represent the average number of
45 pairwise differences between two individuals sampled from different or the same
46 population.
47
48
49
50
51
52
53
54
55

56 **Construction of pan- and core-genome**

57
58
59 To build a gene set including *S. atehiopicum* genes as many as possible, we assembled
60
61
62
63
64
65

1 the contigs of all the re-sequenced 65 accessions individually using SOAPdenovo2
2 [38]. The assembled contigs from each group (“Gilo”, “Shum” and “*S. anguivi*”) were
3 then merged together. CD-HIT-EST [39] was used to eliminate the redundancy and
4 generate the final dataset of pan-genomes for each group. Similarly, all these contigs
5 were merged into a pan-genome of *S. aethiopicum*. Gene models were predicted from
6 these contigs as described above and their functions were also annotated.
7
8
9
10
11
12

13 **Abbreviations**

14
15
16
17 4DTV: four-fold degenerative third-codon transversion; BUSCO: Benchmarking
18 Universal Single-Copy Orthologs; CEG: core embryophyta gene; CV:
19 cross-validation; GATK: Genome Analysis Toolkit; LTR: long terminal repeat; LINE:
20 long interspersed element; LD: Linkage disequilibrium; MYA: million years ago;
21 PSMC: pairwise sequential Markovian coalescent model; PCA: principal-component
22 analysis; SINE: short interspersed element; TE: transposable elements; WGD: whole
23 genome duplication; WGS: whole-genome shotgun.
24
25
26
27
28
29
30
31

32 **Availability of supporting data**

33
34
35
36 The raw sequence data from our genome project was deposited in NCBI Sequence
37 Read Archive under the BioProject of RJNA523664 and CNGB Nucleotide Sequence
38 Archive database (CNSA: <https://db.cngb.org/cnsa>.) under the accession of
39 CNP0000317. Assembly and annotation of *S. aethiopicum* genome are available in
40 GigaDB (<http://gigadb.org/> - see the FTP links that the editors will provide during the
41 review process). All supplementary figures and tables are provided as Additional
42 Files.
43
44
45
46
47
48
49
50

51 **Additional files**

52
53
54
55 Supplementary Tables-1.docx
56

57
58
59 Supplementary Tables-2.rar
60
61
62
63
64
65

Competing interests

The authors declare that they have no competing interests.

Funding

This work was supported by the National Natural Science Foundation of China (No. 31601042), the Science, Technology and Innovation Commission of Shenzhen Municipality under grant, (No. JCYJ20151015162041454 and JCYJ20160331150739027), as well as the funding from Guangdong Provincial Key Laboratory of Genome Read and Write (No. 2017B030301011).

Authors contributions:

X. X., A. D., X. L., J. W., and H. Y. conceived the project; S. C. and H. L. managed and supervised these works; B. S. and Y. F. managed the samples in BGI; B. S. and Y. F assembled, Y. F and Y. S. annotated the genome. H. L. and S. P. constructed DNA libraries and sequenced the genome. Y. S and B. S. performed the analysis of gene families, LTR evolution, and transcriptomic data; Y. F., B. S., and Y. S. analyzed the re-sequencing data; Y. S., Y. F. and B. S. collected dataset required for the analysis in this study. B. S, X. L., Y. S., D. O., and Y. F. wrote and revised the manuscript.

Reference

1. Sunseri F, Polignano GB, Alba V, Lotti C, Bisignano V, Mennella G, et al. Genetic diversity and characterization of African eggplant germplasm collection. *African Journal of Plant Science*. 2010;4:231-41.
2. Anosike CA, Obidoa O and Ezeanyika LU. Membrane stabilization as a mechanism of the anti-inflammatory activity of methanol extract of garden egg (*Solanum aethiopicum*). *Daru Journal of Pharmaceutical Sciences*. 2012;20 1:76-.
3. Gramazio P, Blanca J, Ziarsolo P, Herraiz FJ, Plazas M, Prohens J, et al. Transcriptome analysis and molecular marker discovery in *Solanum incanum* and *S. aethiopicum*, two close relatives of the common eggplant (*Solanum melongena*) with interest for breeding. *Bmc Genomics*. 2016;17 1:300.

- 1
2
3
4
5
6
7
8
9
10
11
12
13
14
15
16
17
18
19
20
21
22
23
24
25
26
27
28
29
30
31
32
33
34
35
36
37
38
39
40
41
42
43
44
45
46
47
48
49
50
51
52
53
54
55
56
57
58
59
60
61
62
63
64
65
4. Lemos BR, Kaplan AC, Bae JE, Ferrazzoli AE, Kuo J, Anand RP, et al. CRISPR/Cas9 cleavages in budding yeast reveal templated insertions and strand-specific insertion/deletion profiles. *Proc Natl Acad Sci U S A*. 2018;115 9:E2040.
5. Mennella G, Rotino GL, Fibiani M, D'Alessandro A, Francese G, Toppino L, et al. Characterization of health-related compounds in eggplant (*Solanum melongena* L.) lines derived from introgression of allied species. *J Agric Food Chem*. 2010;58 13:7597-603.
6. J P, M P, MD R, JM S, JR S and S V. Characterization of interspecific hybrids and first backcross generations from crosses between two cultivated eggplants (*Solanum melongena* and *S. aethiopicum* Kumba group) and implications for eggplant breeding. *Euphytica*. 2012;186 2:517-38.
7. Cappelli C, Stravato V, Rotino G and Buonauro R. Sources of resistance among *Solanum* spp. to an Italian isolate of *Fusarium oxysporum* f. sp. *melongenae*. In: *Eucarpia Meeting on genetics and breeding of Capsicum & Eggplant IX* 1995.
8. Fock I. Source of resistance against *Ralstonia solanacearum* in fertile somatic hybrids of eggplant (*Solanum melongena* L.) with *Solanum aethiopicum* L. *Plant Science An International Journal of Experimental Plant Biology*. 2001;160 2:301-13.
9. Gisbert C, Prohens J, Raigón MD, Stommel JR and Nuez F. Eggplant relatives as sources of variation for developing new rootstocks: Effects of grafting on eggplant yield and fruit apparent quality and composition. *Scientia Horticulturae*. 2011;128 1:14-22.
10. Rizza F, Mennella G, Collonnier C, Sihachakr D, Kashyap V, Rajam M, et al. Androgenic dihaploids from somatic hybrids between *Solanum melongena* and *S. aethiopicum* group gilo as a source of resistance to *Fusarium oxysporum* f. sp. *melongenae*. *Plant Cell Reports*. 2002;20 11:1022-32.
11. Kim S, Park J, Yeom SI, Kim YM, Seo E, Kim KT, et al. New reference genome sequences of hot pepper reveal the massive evolution of plant disease-resistance genes by retroduplication. *Genome Biology*. 2017;18 1:210.
12. Siervo N, Battey JN, Ouadi S, Bovet L, Goepfert S, Bakaheer N, et al. Reference genomes and transcriptomes of *Nicotiana glauca* and *Nicotiana glauca*. *Genome Biology*. 2013;14 6:R60.
13. Qin C, Yu C, Shen Y, Fang X, Chen L, Min J, et al. Whole-genome sequencing of cultivated and wild peppers provides insights into *Capsicum* domestication and specialization. *Proc Natl Acad Sci U S A*. 2014;111 14:5135-40.
14. Consortium TPGS. Genome sequence and analysis of the tuber crop potato. *Nature*. 2011;475 7355:189-95.
15. Consortium TG. The tomato genome sequence provides insights into fleshy fruit evolution. *Nature*. 2012;485 7400:635.
16. Bombarely A, Moser M, Amrad A, Bao M, Bapaume L, Barry CS, et al. Insight into the evolution of the Solanaceae from the parental genomes of *Petunia hybrida*. *Nat Plants*. 2016;2 6:16074.
17. Moscone EA, Baranyi M, Ebert I, Greilhuber J, Ehrendorfer F and Hunziker AT. Analysis of Nuclear DNA Content in *Capsicum* (Solanaceae) by Flow Cytometry and Feulgen Densitometry. *Annals of Botany*. 2003;92 1:21.
18. Kajitani R, Toshimoto K, Noguchi H, Toyoda A, Ogura Y, Okuno M, et al. Efficient de novo assembly of highly heterozygous genomes from whole-genome shotgun short reads. *Genome*

Research. 2014;24 8:1384-95.

19. Initiative AG. Analysis of the genome sequence of the flowering plant *Arabidopsis thaliana*. Nature. 2000;408 6814:796-815.
20. Kim S, Park M, Yeom SI, Kim YM, Lee JM, Lee HA, et al. Genome sequence of the hot pepper provides insights into the evolution of pungency in Capsicum species. Nature Genetics. 2014;46 3:270-8.
21. Waterhouse RM, Seppely M, Simão FA, Manni M, Ioannidis P, Klioutchnikov G, et al. BUSCO applications from quality assessments to gene prediction and phylogenomics. Molecular Biology & Evolution. 2017;35 3.
22. Li L, Stoeckert CJ and Roos DS. OrthoMCL: identification of ortholog groups for eukaryotic genomes. Genome Research. 2003;13 9:2178-89.
23. Wang Y, Tang H, DeBarry JD, Tan X, Li J, Wang X, et al. MCScanX: a toolkit for detection and evolutionary analysis of gene synteny and collinearity. Nucleic acids research. 2012;40 7:e49-e.
24. Jaillon O, Aury JM, Noel B, Policriti A, Clepet C, Casagrande A, et al. The grapevine genome sequence suggests ancestral hexaploidization in major angiosperm phyla. Nature. 2007;449 7161:463.
25. Ellinghaus D, Kurtz S and Willhoeft U. LTRharvest, an efficient and flexible software for de novo detection of LTR retrotransposons. BMC bioinformatics. 2008;9 1:18.
26. Steinbiss S, Willhoeft U, Gremme G and Kurtz S. Fine-grained annotation and classification of de novo predicted LTR retrotransposons. Nucleic acids research. 2009;37 21:7002-13.
27. Ma J and Bennetzen JL. Rapid recent growth and divergence of rice nuclear genomes. Proceedings of the National Academy of Sciences. 2004;101 34:12404-10.
28. McHale L, Tan X, Koehl P and Michelmore RW. Plant NBS-LRR proteins: adaptable guards. Genome biology. 2006;7 4:212.
29. Yue JX, Meyers BC, Chen JQ, Tian D and Yang S. Tracing the origin and evolutionary history of plant nucleotide- binding site-leucine- rich repeat (NBS- LRR) genes. New Phytologist. 2012;193 4:1049-63.
30. Xia R, Xu J, Arikiti S and Meyers BC. Extensive Families of miRNAs and PHAS Loci in Norway Spruce Demonstrate the Origins of Complex phasiRNA Networks in Seed Plants. Molecular Biology & Evolution. 2015;32 11:2905-18.
31. Ratnaparkhe MB, Wang X, Li J, Compton RO, Rainville LK, Lemke C, et al. Comparative analysis of peanut NBS- LRR gene clusters suggests evolutionary innovation among duplicated domains and erosion of gene microsynteny. New Phytologist. 2011;192 1:164-78.
32. Lester R and Niakan L. Origin and domestication of the scarlet eggplant, *Solanum aethiopicum*, from *S. anguivi* in Africa. Solanaceae: Biology and systematics. 1986:433-56.
33. Barrett JC, Fry B, Maller J and Daly MJ. Haploview: analysis and visualization of LD and haplotype maps. Bioinformatics. 2004;21 2:263-5.
34. Pascual L, Desplat N, Huang BE, Desgroux A, Bruguier L, Bouchet JP, et al. Potential of a tomato MAGIC population to decipher the genetic control of quantitative traits and detect causal variants in the resequencing era. Plant Biotechnology Journal. 2015;13 4:565-77.
35. Alexander DH, Novembre J and Lange K. Fast model-based estimation of ancestry in unrelated individuals. Genome research. 2009.
36. Li H and Richard D. Inference of Human Population History From Whole Genome Sequence

of A Single Individual. *Nature*. 2012;475 7357:493-6.

- 1 37. Manning K and Timpson A. The demographic response to Holocene climate change in the
2 Sahara. *Quaternary Science Reviews*. 2014;101:28-35.
- 3 38. Luo R, Liu B, Xie Y, Li Z, Huang W, Yuan J, et al. SOAPdenovo2: an empirically improved
4 memory-efficient short-read de novo assembler. *Gigascience*. 2012;1 1:18.
5 doi:10.1186/2047-217X-1-18.
- 6 39. Fu L, Niu B, Zhu Z, Wu S and Li W. CD-HIT: accelerated for clustering the next-generation
7 sequencing data. *Bioinformatics*. 2012;28 23:3150-2.
- 8 40. Galindo-González L, Mhiri C, Deyholos MK and Grandbastien M-A. LTR-retrotransposons in
9 plants: engines of evolution. *Gene*. 2017;626:14-25.
- 10 41. Kashkush K, Feldman M and Levy AA. Transcriptional activation of retrotransposons alters
11 the expression of adjacent genes in wheat. *Nature genetics*. 2003;33 1:102.
- 12 42. Kashkush K and Khasdan V. Large-scale survey of cytosine methylation of retrotransposons
13 and the impact of readout transcription from long terminal repeats on expression of adjacent
14 rice genes. *Genetics*. 2007;177 4:1975-85.
- 15 43. Hollister JD, Smith LM, Guo Y-L, Ott F, Weigel D and Gaut BS. Transposable elements and
16 small RNAs contribute to gene expression divergence between *Arabidopsis thaliana* and
17 *Arabidopsis lyrata*. *Proceedings of the National Academy of Sciences*. 2011:201018222.
- 18 44. Hollister JD and Gaut BS. Epigenetic silencing of transposable elements: a trade-off between
19 reduced transposition and deleterious effects on neighboring gene expression. *Genome
20 research*. 2009.
- 21 45. Ma L-J, Van Der Does HC, Borkovich KA, Coleman JJ, Daboussi M-J, Di Pietro A, et al.
22 Comparative genomics reveals mobile pathogenicity chromosomes in *Fusarium*. *Nature*.
23 2010;464 7287:367.
- 24 46. Song B, Morse D, Song Y, Fu Y, Lin X, Wang W, et al. Comparative genomics reveals two
25 major bouts of gene retroposition coinciding with crucial periods of Symbiodinium evolution.
26 *Genome Biology and Evolution*. 2017;9 8:2037-47.
- 27 47. Song B, Chen S and Chen W. Dinoflagellates, a unique lineage for retrogene research.
28 *Frontiers in microbiology*. 2018;9:1556.
- 29 48. Chang Y, Liu H, Liu M, Liao X, Sahu SK, Fu Y, et al. The draft genomes of five agriculturally
30 important African orphan crops. *GigaScience*. 2019.
- 31 49. Liu B, Shi Y, Yuan J, Hu X, Zhang H, Li N, et al. Estimation of genomic characteristics by
32 analyzing k-mer frequency in de novo genome projects. *arXiv preprint arXiv:13082012*. 2013.
- 33 50. Chikhi R and Medvedev P. Informed and automated k-mer size selection for genome assembly.
34 *Bioinformatics*. 2013;30 1:31-7.
- 35 51. Benson G. Tandem repeats finder: a program to analyze DNA sequences. *Nucleic acids
36 research*. 1999;27 2:573-80.
- 37 52. Smit A, Hubley R and Green P. 2013–2015. RepeatMasker Open-4.0. 2013.
- 38 53. Smit A and Hubley R. RepeatModeler Open-1.0. Available from [http://www](http://www.repeatmasker.org)
39 repeatmasker.org.
40 2008.
- 41 54. Bao W, Kojima KK and Kohany O. Repbase Update, a database of repetitive elements in
42 eukaryotic genomes. *Mobile DNA*. 2015;6 1:11.
- 43 55. Stanke M, Keller O, Gunduz I, Hayes A, Waack S and Morgenstern B. AUGUSTUS: ab initio
44 prediction of alternative transcripts. *Nucleic acids research*. 2006;34 suppl_2:W435-W9.

- 1
2
3
4
5
6
7
8
9
10
11
12
13
14
15
16
17
18
19
20
21
22
23
24
25
26
27
28
29
30
31
32
33
34
35
36
37
38
39
40
41
42
43
44
45
46
47
48
49
50
51
52
53
54
55
56
57
58
59
60
61
62
63
64
65
56. Altschul SF, Gish W, Miller W, Myers EW and Lipman DJ. Basic local alignment search tool. *Journal of molecular biology*. 1990;215 3:403-10.
 57. Birney E, Clamp M and Durbin R. GeneWise and genomewise. *Genome research*. 2004;14 5:988-95.
 58. Kim D, Langmead B and Salzberg SL. HISAT: a fast spliced aligner with low memory requirements. *Nature methods*. 2015;12 4:357.
 59. Pertea M, Pertea GM, Antonescu CM, Chang T-C, Mendell JT and Salzberg SL. StringTie enables improved reconstruction of a transcriptome from RNA-seq reads. *Nature biotechnology*. 2015;33 3:290.
 60. Elsik CG, Mackey AJ, Reese JT, Milshina NV, Roos DS and Weinstock GM. Creating a honey bee consensus gene set. *Genome biology*. 2007;8 1:R13.
 61. Lowe TM and Eddy SR. tRNAscan-SE: a program for improved detection of transfer RNA genes in genomic sequence. *Nucleic acids research*. 1997;25 5:955.
 62. Kalvari I, Argasinska J, Quinones-Olvera N, Nawrocki EP, Rivas E, Eddy SR, et al. Rfam 13.0: shifting to a genome-centric resource for non-coding RNA families. *Nucleic acids research*. 2017;46 D1:D335-D42.
 63. Consortium U. UniProt: the universal protein knowledgebase. *Nucleic acids research*. 2018;46 5:2699.
 64. Mitchell AL, Attwood TK, Babbitt PC, Blum M, Bork P, Bridge A, et al. InterPro in 2019: improving coverage, classification and access to protein sequence annotations. *Nucleic Acids Research*. 2018.
 65. Ashburner M, Ball CA, Blake JA, Botstein D, Butler H, Cherry JM, et al. Gene Ontology: tool for the unification of biology. *Nature genetics*. 2000;25 1:25.
 66. Consortium GO. Expansion of the Gene Ontology knowledgebase and resources. *Nucleic acids research*. 2016;45 D1:D331-D8.
 67. Tatusov RL, Fedorova ND, Jackson JD, Jacobs AR, Kiryutin B, Koonin EV, et al. The COG database: an updated version includes eukaryotes. *BMC bioinformatics*. 2003;4 1:41.
 68. Nakamura T, Yamada KD, Tomii K, Katoh K and Hancock J. Parallelization of MAFFT for large-scale multiple sequence alignments. *Bioinformatics*. 2018;1:3.
 69. Guindon S, Dufayard J-F, Lefort V, Anisimova M, Hordijk W and Gascuel O. New algorithms and methods to estimate maximum-likelihood phylogenies: assessing the performance of PhyML 3.0. *Systematic biology*. 2010;59 3:307-21.
 70. Yang Z and Rannala B. Bayesian estimation of species divergence times under a molecular clock using multiple fossil calibrations with soft bounds. *Molecular biology and evolution*. 2005;23 1:212-26.
 71. Rice P, Longden I and Bleasby A. EMBOSS: the European molecular biology open software suite. *Trends in genetics*. 2000;16 6:276-7.
 72. Li H and Durbin R. Fast and accurate short read alignment with Burrows–Wheeler transform. *bioinformatics*. 2009;25 14:1754-60.
 73. Robinson MD, McCarthy DJ and Smyth GK. edgeR: a Bioconductor package for differential expression analysis of digital gene expression data. *Bioinformatics*. 2010;26 1:139-40.
 74. Kolde R and Kolde MR. Package ‘pheatmap’. 2018.
 75. Price MN, Dehal PS and Arkin AP. FastTree 2—approximately maximum-likelihood trees for large alignments. *PLoS one*. 2010;5 3:e9490.

1
2
3
4
5
6
7
8
9
10
11
12
13
14
15
16
17
18
19
20
21
22
23
24
25
26
27
28
29
30
31
32
33
34
35
36
37
38
39
40
41
42
43
44
45
46
47
48
49
50
51
52
53
54
55
56
57
58
59
60
61
62
63
64
65

76. Li H, Handsaker B, Wysoker A, Fennell T, Ruan J, Homer N, et al. The sequence alignment/map format and SAMtools. *Bioinformatics*. 2009;25 16:2078-9.

77. Chang CC, Chow CC, Tellier LC, Vattikuti S, Purcell SM and Lee JJ. Second-generation PLINK: rising to the challenge of larger and richer datasets. *GigaScience*. 2015;4 1:7.

78. Cingolani P, Platts A, Wang LL, Coon M, Nguyen T, Wang L, et al. A program for annotating and predicting the effects of single nucleotide polymorphisms, SnpEff: SNPs in the genome of *Drosophila melanogaster* strain w1118; iso-2; iso-3. *Fly*. 2012;6 2:80-92.

79. Browning SR and Browning BL. Rapid and accurate haplotype phasing and missing-data inference for whole-genome association studies by use of localized haplotype clustering. *The American Journal of Human Genetics*. 2007;81 5:1084-97.

80. He W, Zhao S, Liu X, Dong S, Lv J, Liu D, et al. ReSeqTools: an integrated toolkit for large-scale next-generation sequencing based resequencing analysis. *Genetics and Molecular Research*. 2013;12 4:6275-83.

81. Yang J, Lee SH, Goddard ME and Visscher PM. Genome-wide complex trait analysis (GCTA): methods, data analyses, and interpretations. *Genome-wide association studies and genomic prediction*. Springer; 2013. p. 215-36.

Table 1 The statistics of *S. aethiopicum* genome and gene annotation.

Number of scaffolds	162,187
Total length of scaffolds	1.02 Gb
N50 of scaffolds	516.1 Kb
Longest scaffolds	2.94 Mp
Number of contigs	231,821
Total length of contigs	936 Mb
N50 of contigs	25.2 Kb
Longest contigs	366.2 kb
GC content	33.13%
Number of genes	34,906
Average/total coding sequence length	1104.3bp/38.5 Mb
Average exon/intron length	265.8bp/613.1 bp
Total length of transposable elements	805.7 Mb (78.23%)

1
2
3
4
5
6
7
8
9
10
11
12
13
14
15
16
17
18
19
20
21
22
23
24
25
26
27
28
29
30
31
32
33
34
35
36
37
38
39
40
41
42
43
44
45
46
47
48
49
50
51
52
53
54
55
56
57
58
59
60
61
62
63
64
65

Table 2 Statistics of SNPs and indels for 65 accession

		Number	Percentage (%)
SNPs	Exon	393,882	2.12
	Intron	675,360	3.63
	Intergenic	17,552,823	94.29
	Synonymous	126,172	0.67
	Non-synonymous	267,710	1.44
	Total	18,614,838	
Indels	Exon	32,519	1.62
	Intron	145,741	7.28
	Intergenic	1,821,530	91.11
	Frame shift	2,977	0.13
	Total	1,999,241	

1
2
3
4
5
6
7
8
9
10
11
12
13
14
15
16
17
18
19
20
21
22
23
24
25
26
27
28
29
30
31
32
33
34
35
36
37
38
39
40
41
42
43
44
45
46
47
48
49
50
51
52
53
54
55
56
57
58
59
60
61
62
63
64
65

Figure Legends

Figure 1 Comparative analysis of the *Solanum aethiopicum* genome. (A) Phylogenetic analysis among *S. melongena*, *S. lycopersicum*, *S. tuberosum*, *S. aethiopicum* and *C. annuum* by using the single-copy gene families. The species differentiation time between *S. aethiopicum* and *S. melongena* was 2.6 MYA (B) Distribution of 4DTv distance, which showed two peaks around 0.25 and 1 (black line), representing two whole genomic duplication events (C) Venn diagram showing overlaps of gene families between *S. melongena*, *S. lycopersicum*, *S. tuberosum*, *S. aethiopicum* and *C. annuum*. A total of 465 gene families were unique to *S. aethiopicum* and 10166 were common shared by the 5 species genome.

Figure 2 LTR-Rs insertion time distribution and the expression level of LTR-Rs in different tissues. Insertion time distribution of total LTR-Rs (A), *Ty3/Gypsy* LTR-Rs (B) and *Ty1/Copia* LTR-Rs (C) of *C. annuum*, *S. melongena*, *S. lycopersicum* and *S. aethiopicum*. The x- and y-axes respectively indicate the insertion time and the frequency of inserted LTR-Rs. The expression levels of LTR-Rs in Flower (D), Fruit (E), Leaf (F), Root (G).

Figure 3 LTR-Rs captured and disrupted genes. (A) The distribution of ages of LTR-Rs captured and disrupted genes. (B) GO enrichment analysis between the LTR-Rs captured and disrupted gene set. (C) GO terms enriched in LTR-Rs captured genes that are specifically highly expressed in various tissues including leaf, flower, root and fruit. (D) Phylogenetic tree of NLR gene in *S. aethiopicum* and *S. melongena*.

Figure 4 SNPs, Indel and LD decay for “Gilo”, “Shum” and “*S. anguivi*” groups. (A) 2,019,539 (10.85%), 4,747,418 (25.50%) and 587,885 (3.16%) SNPs that were unique to “Gilo”, “Shum” and “*S. anguivi*” respectively and the majority (93.13%) of SNPs in “*S. anguivi*” were shared with either “Gilo” or “Shum”; (B) 14.06%, 28.96% and 2.76% indels were unique to “Gilo”, “Shum” and “*S. anguivi*” respectively and similar to the statistics of SNPs in these groups, 92.62% of indels in “*S. anguivi*” were shared with either “Gilo” or “Shum”; (C) Linkage disequilibrium (LD) estimation revealed that r^2 reaches the half maximum value at ~150 kb.

1 **Figure 5** Population structure and demography of *S. aethiopicum*. (A) A
2 maximum-likelihood phylogenetic tree using the full-set of SNPs; (B)
3 Principal-component analysis (PCA); (C) PSMC analysis indicated a distinct
4 demographic history of *S. aethiopicum* from 10,000 to 100 years ago, in which a
5 bottleneck was shown around 4,000-5,000 years ago, followed by an immediate
6 expansion of population size.
7
8
9
10
11
12
13
14
15
16
17
18
19
20
21
22
23
24
25
26
27
28
29
30
31
32
33
34
35
36
37
38
39
40
41
42
43
44
45
46
47
48
49
50
51
52
53
54
55
56
57
58
59
60
61
62
63
64
65

Figure 1

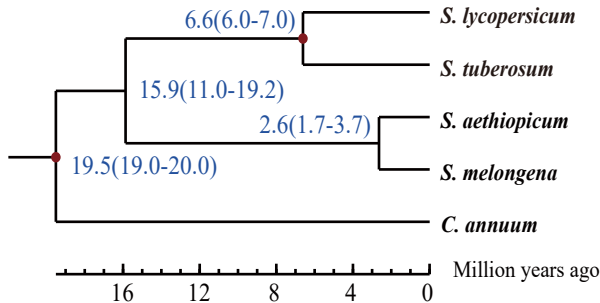
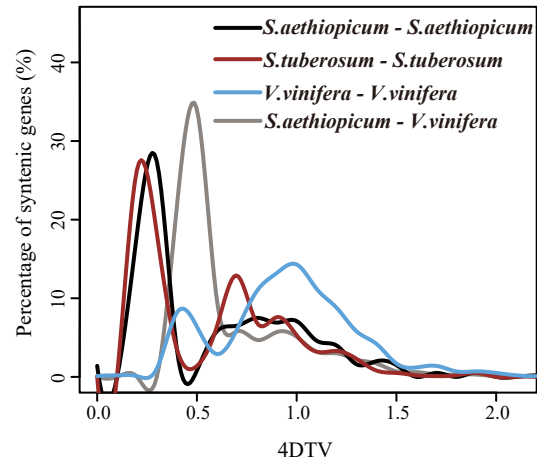
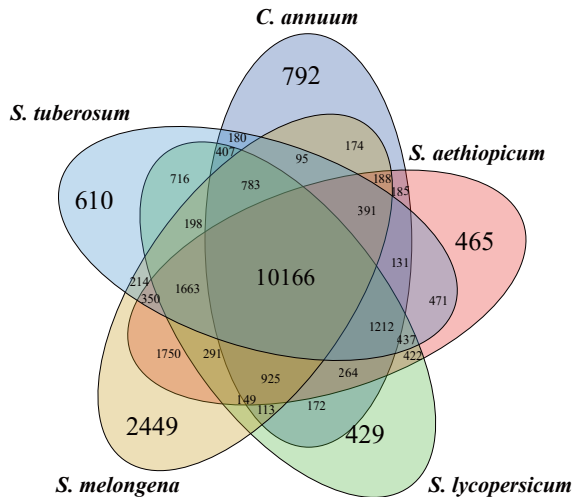
[Click here to access/download;Figure;Figure1.pdf](#)
A**B****C**

Figure 2

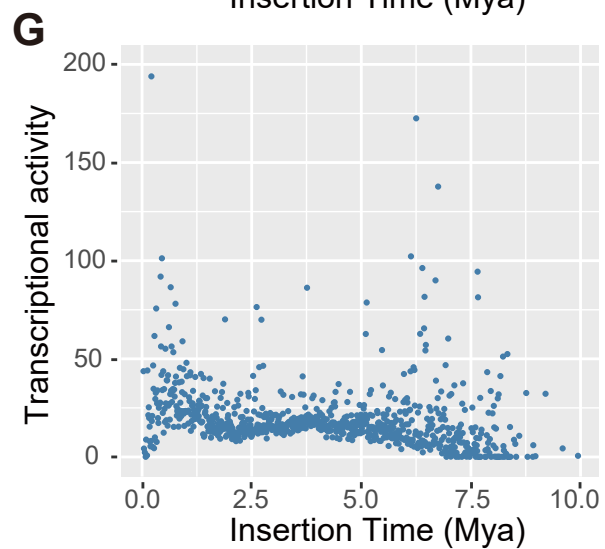
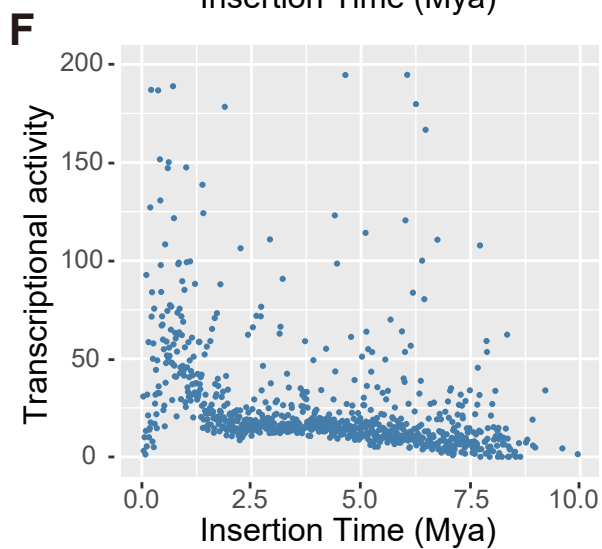
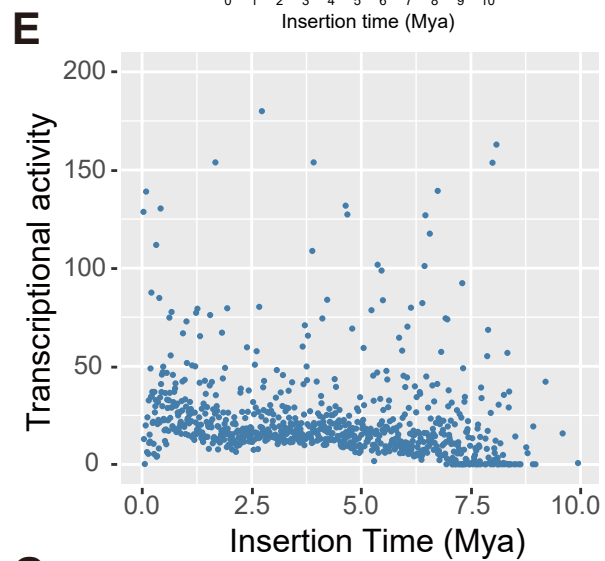
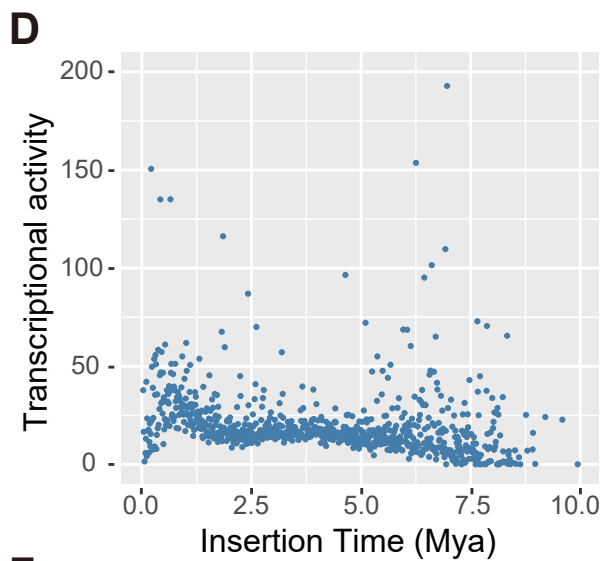
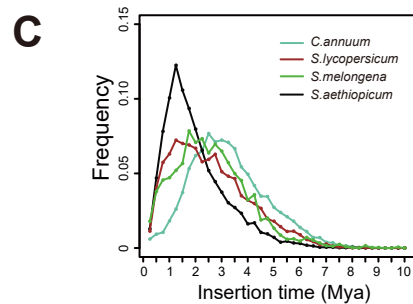
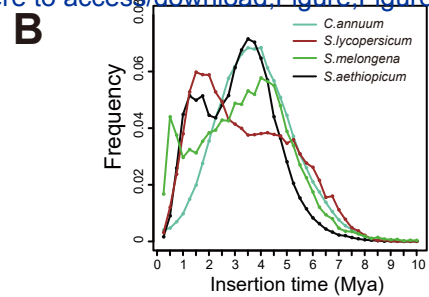
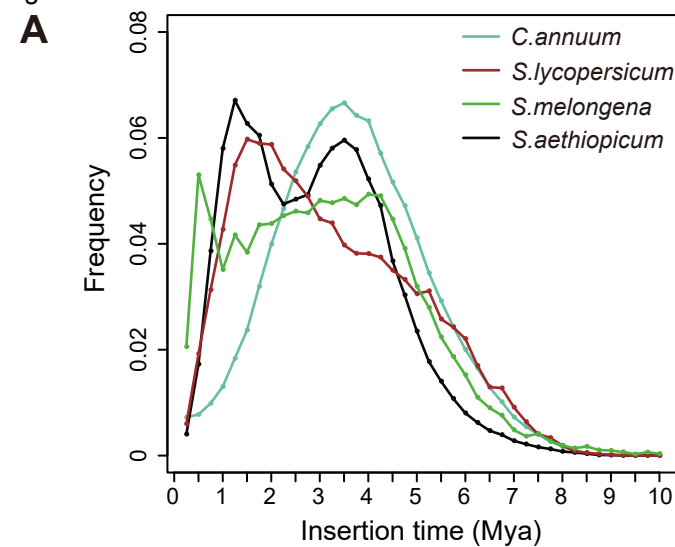
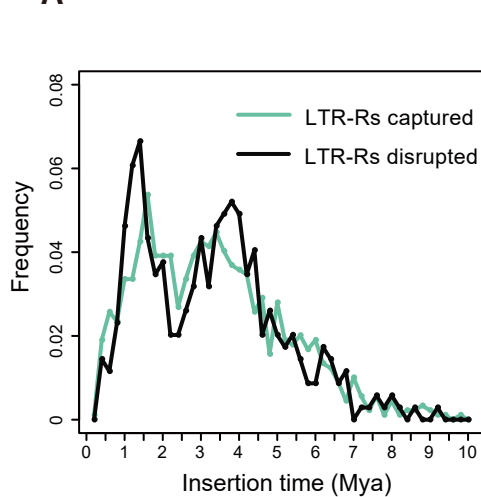
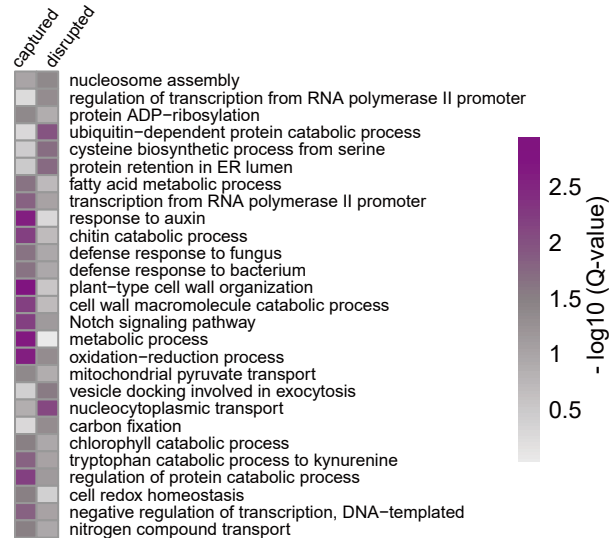
[Click here to access/download;Figure2;Figure2.pdf](#)

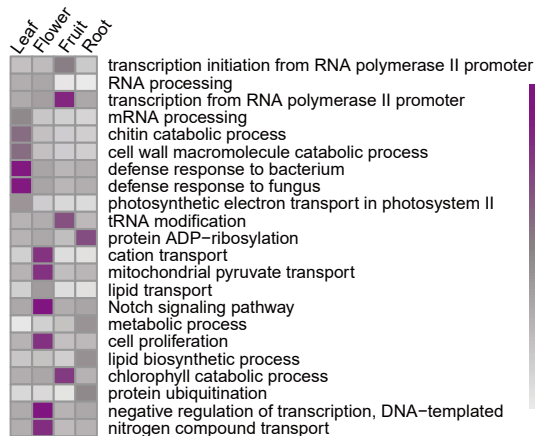
Figure 3



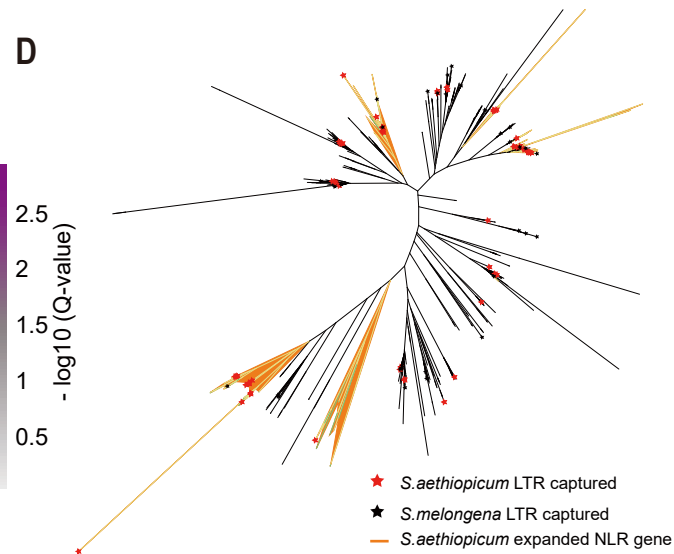
B Click here to access/download;Figure;Figure3.pdf



C



D



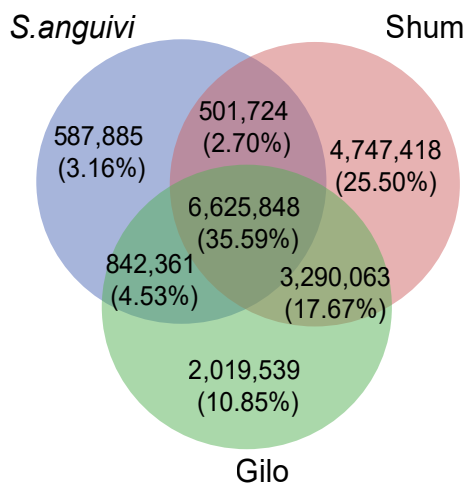
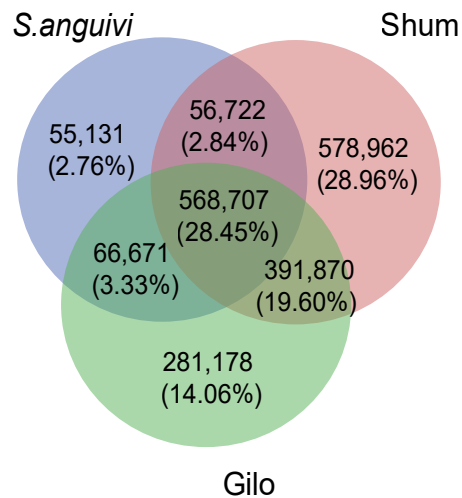
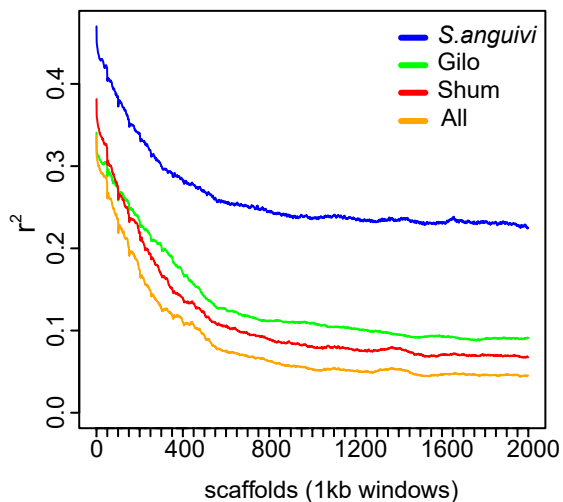
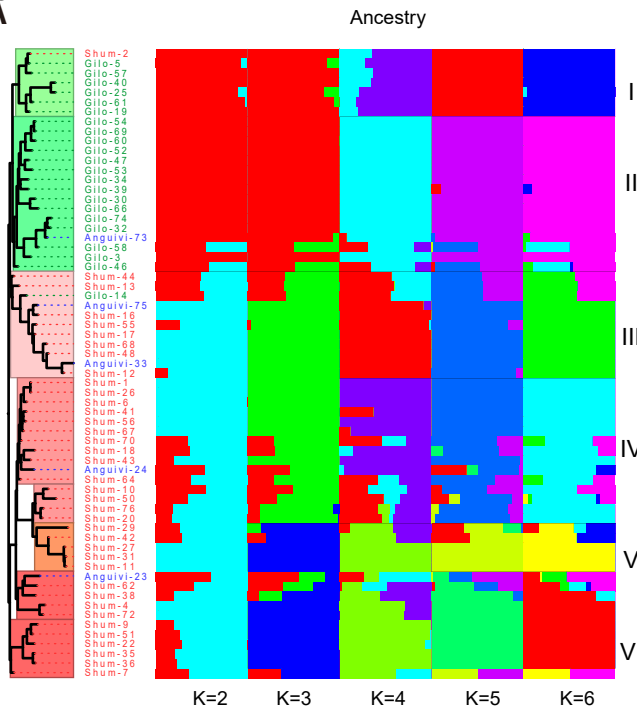
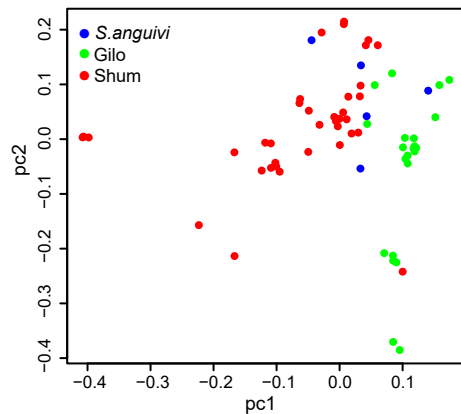
A**B****C**

Figure5

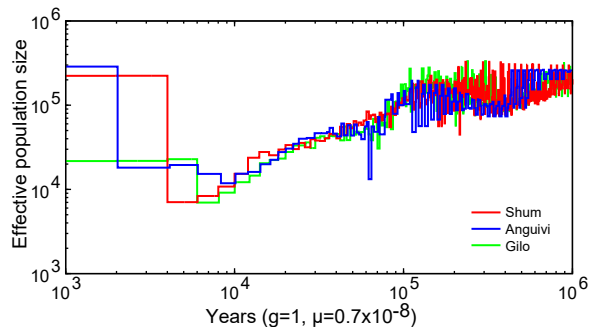
A


[Click here to access/download;Figure;Figure5.pdf](#)

B



C





Click here to access/download
Supplementary Material
Supplementary Tables-1.docx





Click here to access/download
Supplementary Material
Supplementary Tables-2.rar



