

GPCR gene symbol: *PTGDR*
 GPCR name: DP
 Tested ligand: Prostaglandin D2

C-terminal chimera co-expression

Gas family

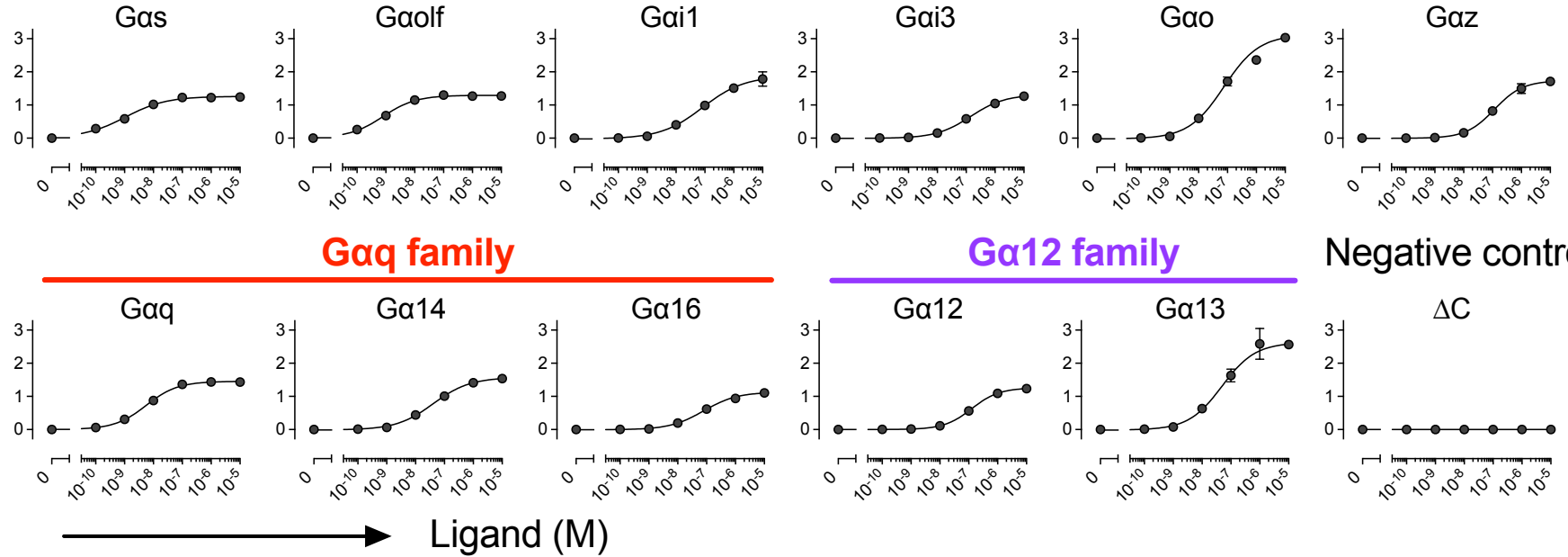
Gai family

Gaq family

Gα12 family

Negative control

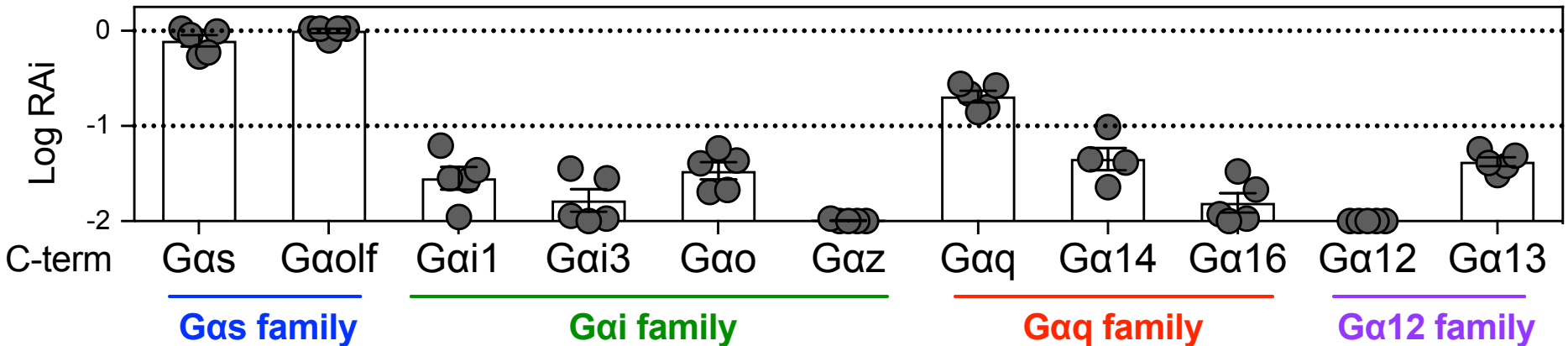
cAMP response
(normalized to FSK)



E_{max} (relative to FSK)

● <0.1 ● <0.3 ● <0.5 ● >0.5

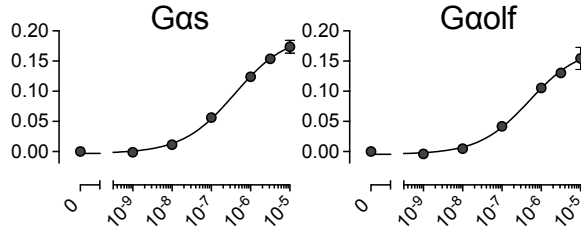
Log RAI



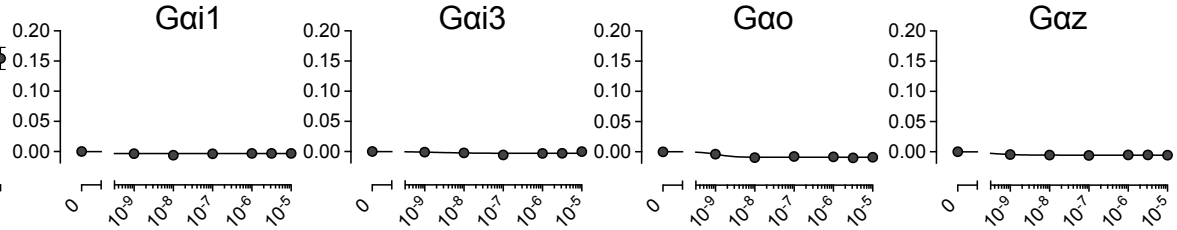
GPCR gene symbol: *PTGER1*
 GPCR name: EP1
 Tested ligand: Prostaglandin E2

C-terminal chimera co-expression

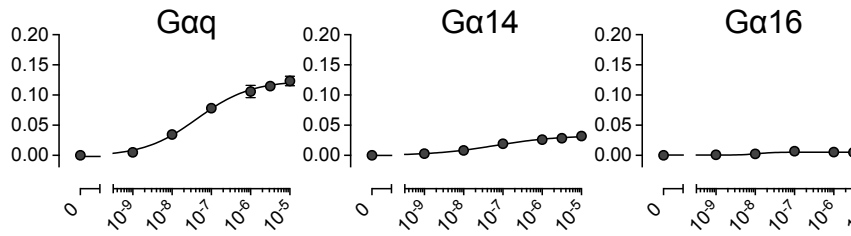
Gas family



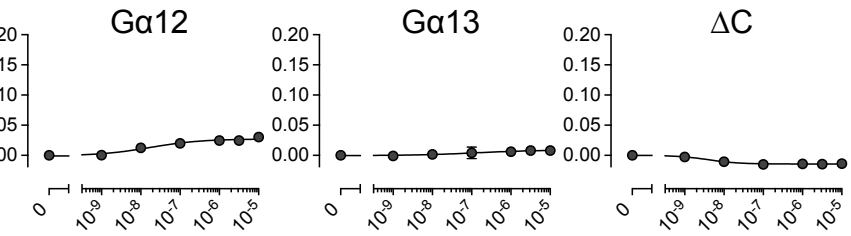
Gai family



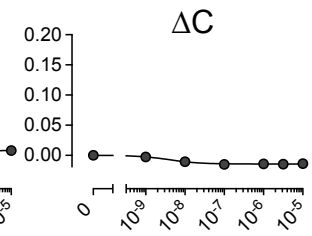
Gaq family



Gα12 family



Negative control



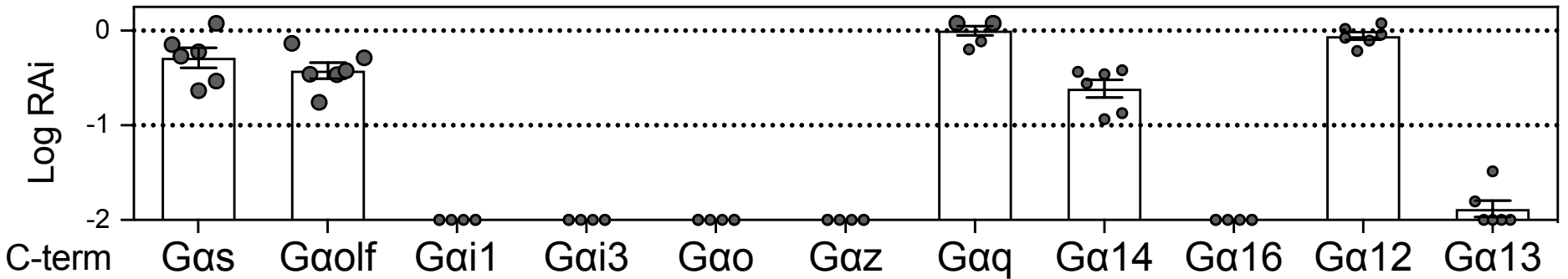
cAMP response
(normalized to FSK)

Ligand (M)

E_{max} (relative to FSK)

● <0.1 ● <0.3 ● <0.5 ● >0.5

Log RAI



C-term Gas Gaolf Gai1 Gai3 Gao Gaz Gaq Ga14 Ga16 Ga12 Ga13

Gas family

Gai family

Gaq family

Gα12 family

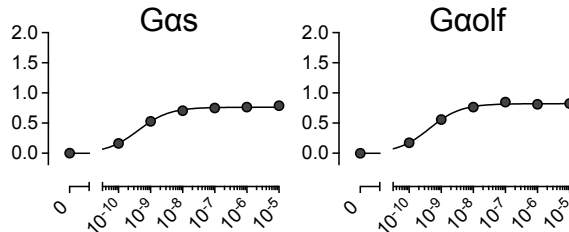
GPCR gene symbol: *PTGER2*

GPCR name: EP2

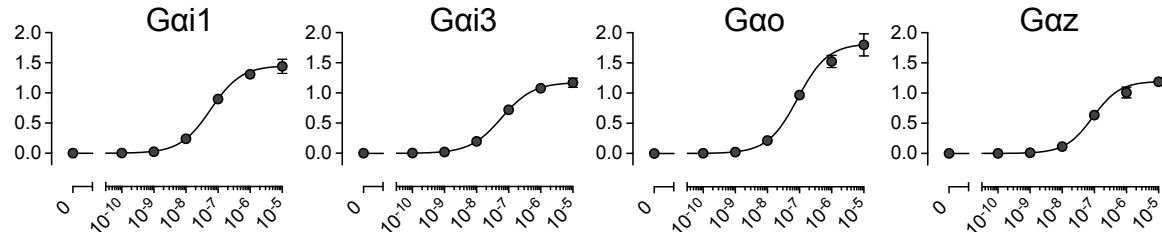
Tested ligand: Prostaglandin E2

C-terminal chimera co-expression

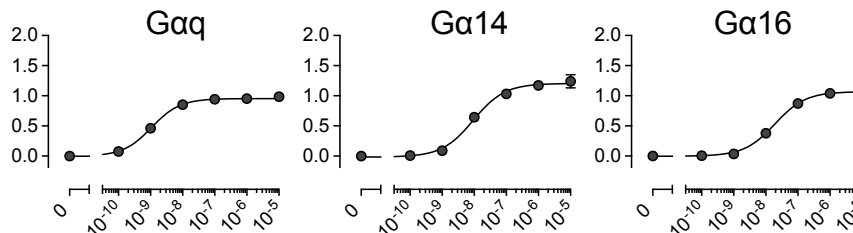
Gas family



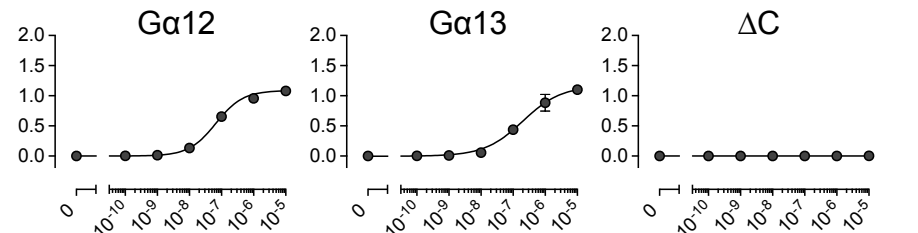
Gai family



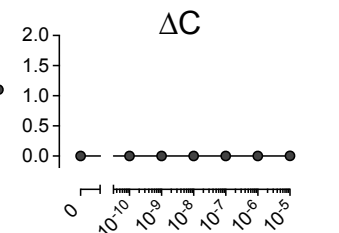
Gaq family



Gα12 family



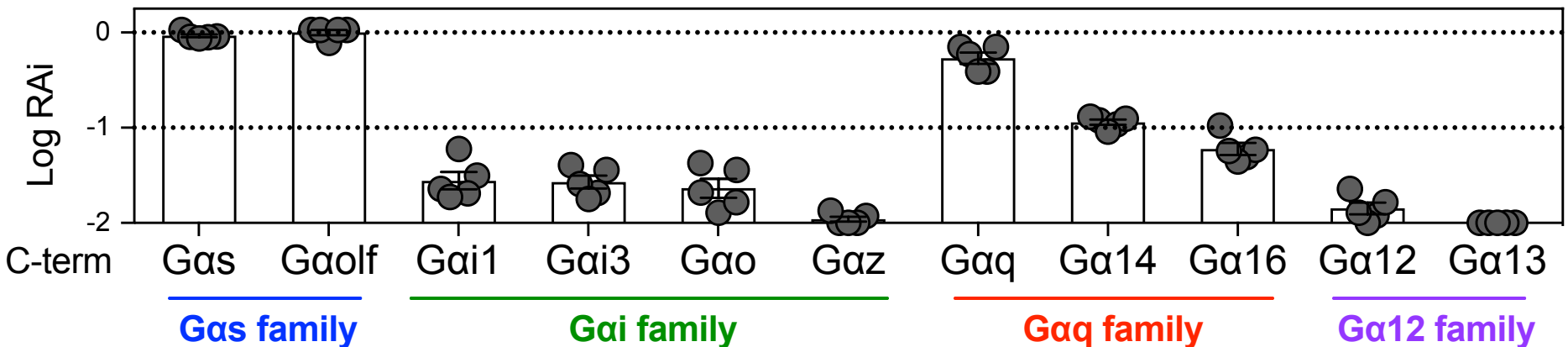
Negative control



→ Ligand (M)

E_{max} (relative to FSK)

● <0.1 ● <0.3 ● <0.5 ● >0.5



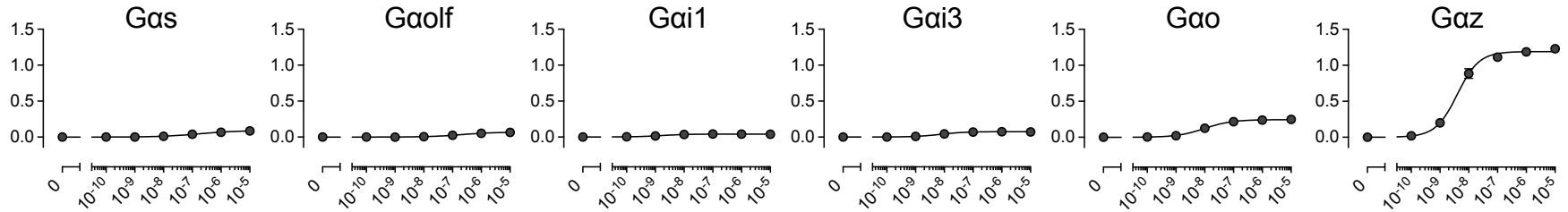
GPCR gene symbol: *PTGER3*

GPCR name: EP3

Tested ligand: Prostaglandin E2

C-terminal chimera co-expression

Gas family

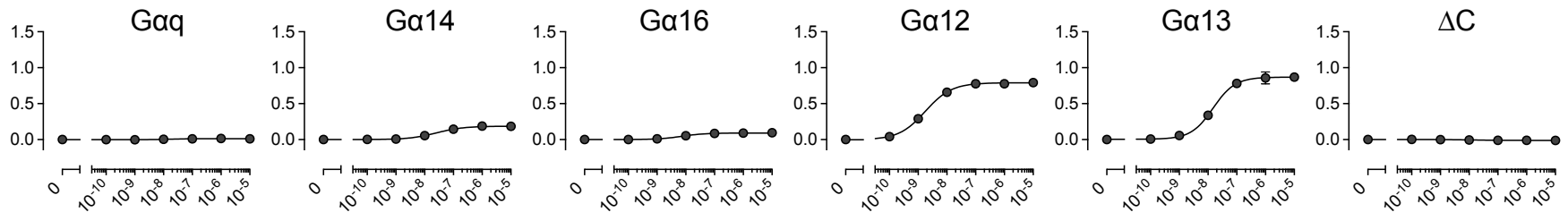


Gai family

Gaq family

Gα12 family

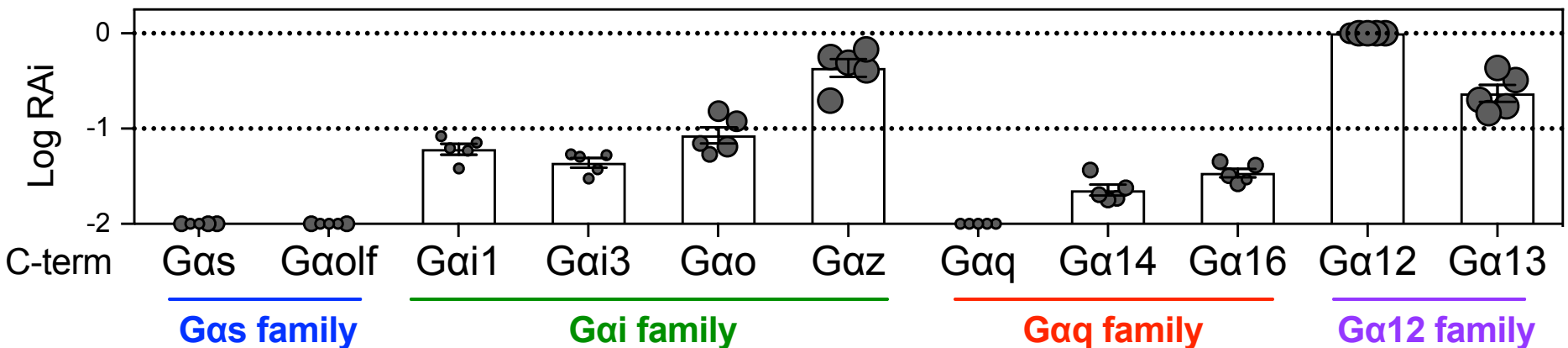
Negative control



Ligand (M)

E_{max} (relative to FSK)

● <0.1 ● <0.3 ● <0.5 ● >0.5



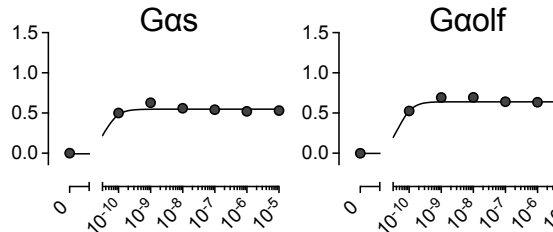
GPCR gene symbol: *PTGER4*

GPCR name: EP4

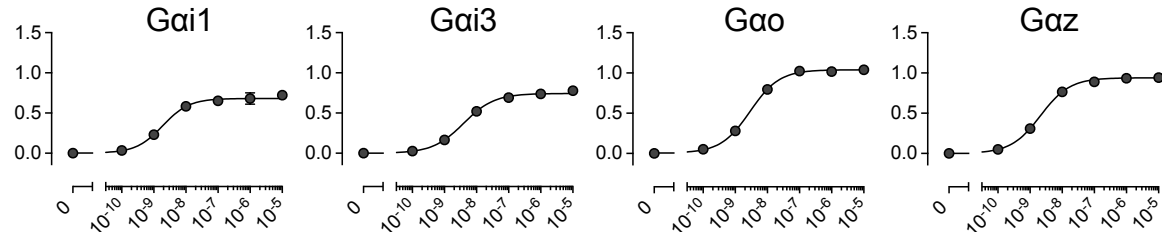
Tested ligand: Prostaglandin E2

C-terminal chimera co-expression

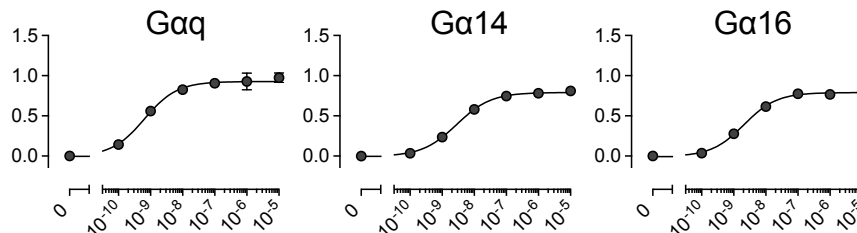
Gas family



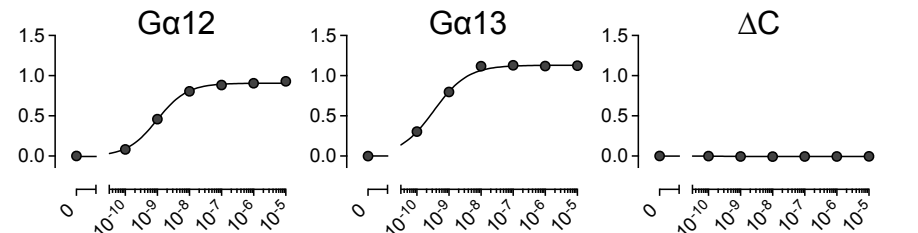
Gai family



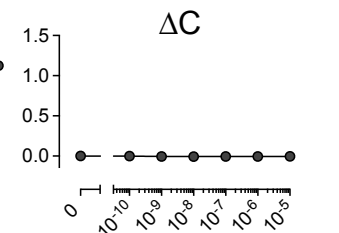
Gaq family



Gα12 family



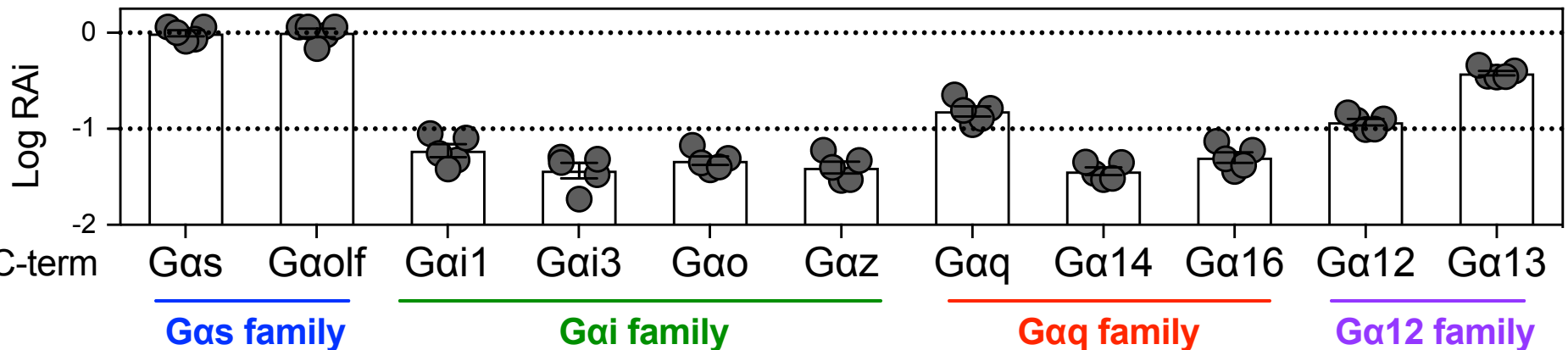
Negative control



Ligand (M)

E_{max} (relative to FSK)

● <0.1 ● <0.3 ● <0.5 ● >0.5



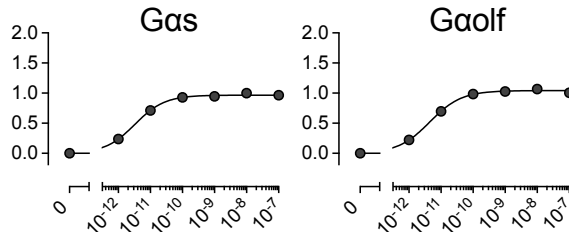
GPCR gene symbol: *PTGIR*

GPCR name: IP

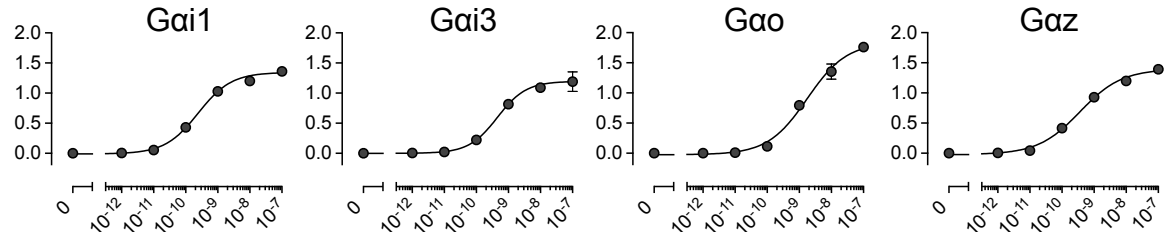
Tested ligand: Iloprost

C-terminal chimera co-expression

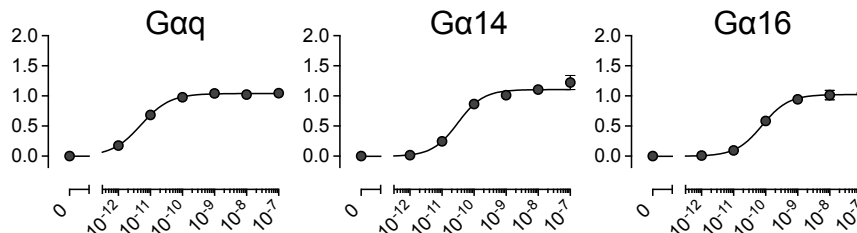
Gas family



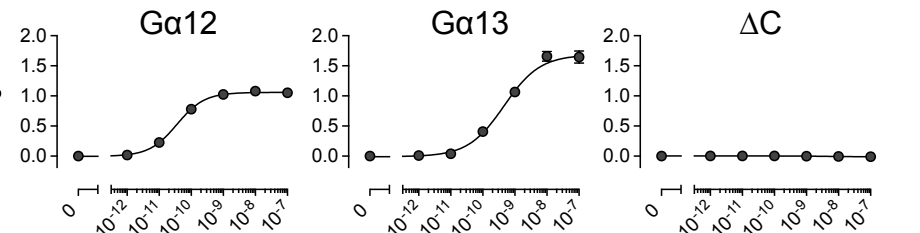
Gai family



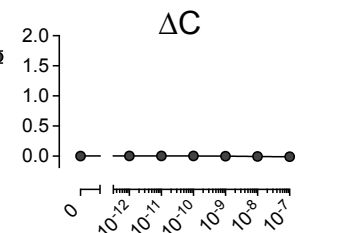
Gaq family



Gα12 family



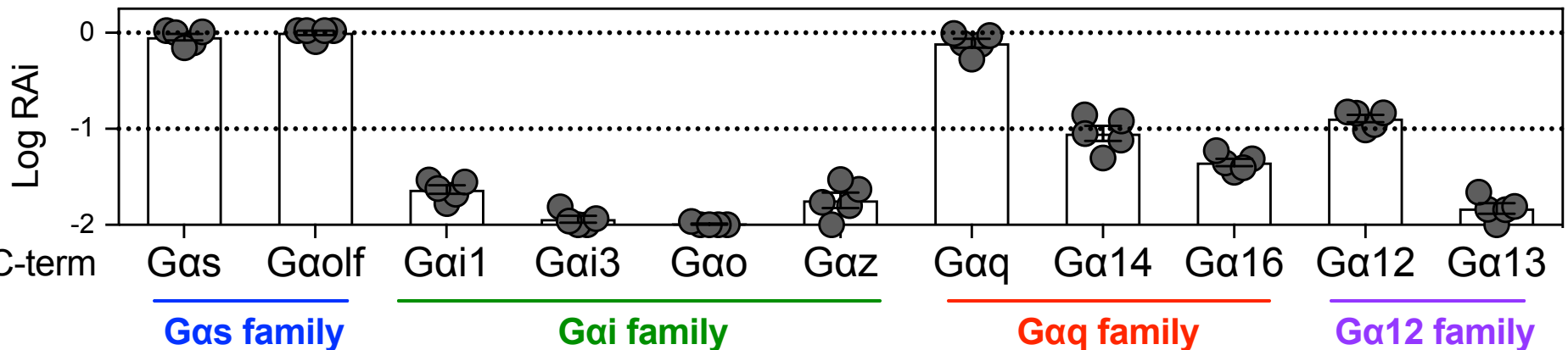
Negative control



→ Ligand (M)

E_{max} (relative to FSK)

● <0.1 ● <0.3 ● <0.5 ● >0.5



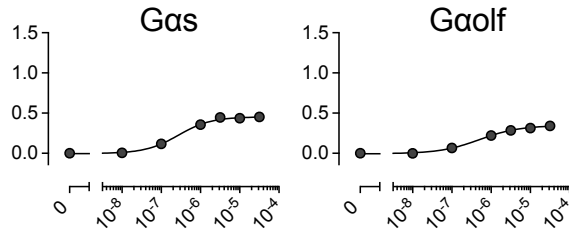
GPCR gene symbol: *TBXA2R*

GPCR name: TP

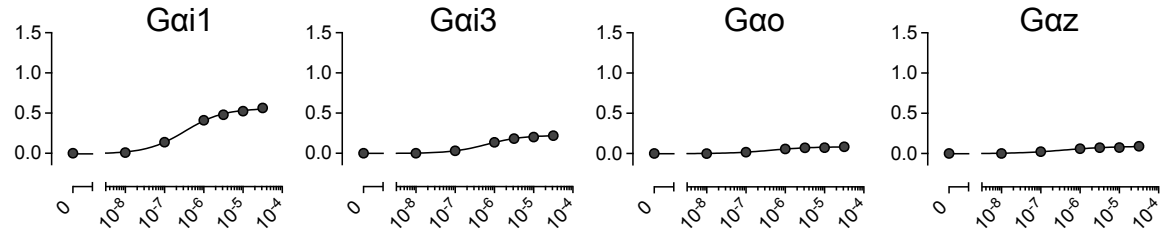
Tested ligand: U-46619

C-terminal chimera co-expression

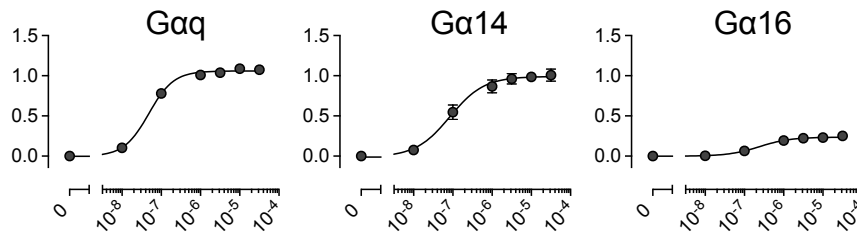
Gas family



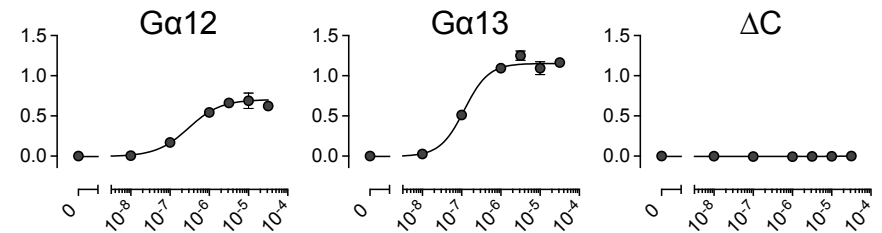
Gai family



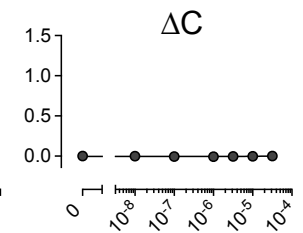
Gaq family



Gα12 family



Negative control



→ Ligand (M)

E_{max} (relative to FSK)

● <0.1 ● <0.3 ● <0.5 ● >0.5

