

## **Characterization of three *TRAPPC11* variants suggests a critical role for the extreme carboxy terminus of the protein**

Miroslav P. Milev<sup>1\*</sup>, Daniela Stanga<sup>1\*</sup>, Anne Schänzer<sup>2</sup>, Andrés Nascimento<sup>3,4</sup>, Djenann Saint-Dic<sup>1</sup>, Carlos Ortez<sup>3</sup>, Daniel Natera-de Benito<sup>3</sup>, Desiré González Barrios<sup>5</sup>, Jaume Colomer<sup>3</sup>, Carmen Badosa<sup>3</sup>, Cristina Jou<sup>4,6</sup>, Pia Gallano<sup>4,7</sup>, Lidia Gonzalez-Quereda<sup>4,7</sup>, Ana Töpf<sup>8</sup>, Katherine Johnson<sup>8,9</sup>, Volker Straub<sup>8</sup>, Andreas Hahn<sup>10†</sup>, Michael Sacher<sup>1,11†</sup>, Cecilia Jimenez-Mallebrera<sup>3,4†</sup>

<sup>1</sup> Concordia University, Department of Biology, Montreal, Quebec, Canada

<sup>2</sup> Institute of Neuropathology, Justus Liebig University Giessen, Giessen, Germany

<sup>3</sup> Neuromuscular Unit, Neuropaediatrics Department, Hospital Sant Joan de Déu, Institut de Recerca Sant Joan de Déu. Barcelona, Spain

<sup>4</sup> U705 and U703 Center for Biomedical Research on Rare Diseases (CIBERER), Instituto de Salud Carlos III, Spain

<sup>5</sup> Servicio de Pediatría, Hospital Universitario Nuestra Señora de Candelaria, Santa Cruz de Tenerife, Spain

<sup>6</sup> Pathology Department and Biobank, Hospital Sant Joan de Déu, Institut de Recerca Sant Joan de Déu, Barcelona, Spain

<sup>7</sup> Servicio de Genética, Hospital de la Santa Creu i Sant Pau, Barcelona, Spain

<sup>8</sup> The John Walton Muscular Dystrophy Research Centre, Institute of Genetic Medicine, Newcastle University and Newcastle Hospitals NHS Foundation Trust, Newcastle-upon-Tyne, U.K.

<sup>9</sup> Institute of Cellular Medicine, Newcastle University, Newcastle-upon-Tyne, U.K.

<sup>10</sup> Department of Child Neurology, Justus Liebig University Giessen, Giessen, Germany

<sup>11</sup> McGill University, Department of Anatomy and Cell Biology, Montreal, Quebec, Canada

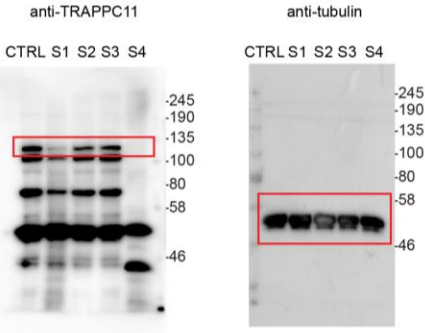
†address correspondence to [cjimenezm@fsjd.org](mailto:cjimenezm@fsjd.org); [michael.sacher@concordia.ca](mailto:michael.sacher@concordia.ca);

[Andreas.Hahn@paediat.med.uni-giessen.de](mailto:Andreas.Hahn@paediat.med.uni-giessen.de)

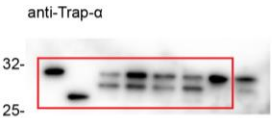
\*equal contribution

**Figure S1.** Full blots for the western blots shown in figures 4 and 6. The regions cropped and used in the figures are indicated by red boxes. Molecular size standards are indicated next to each panel.

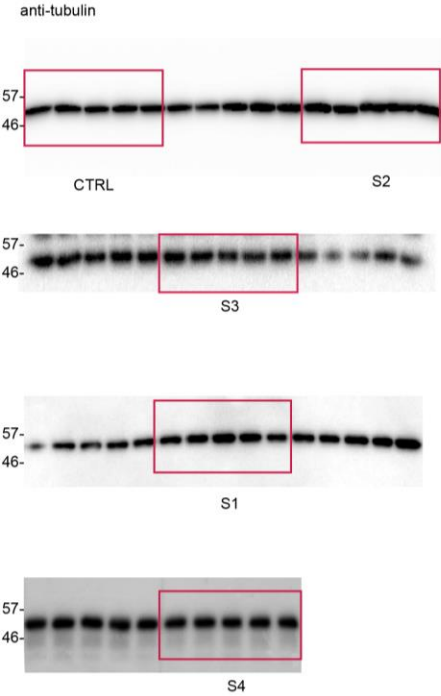
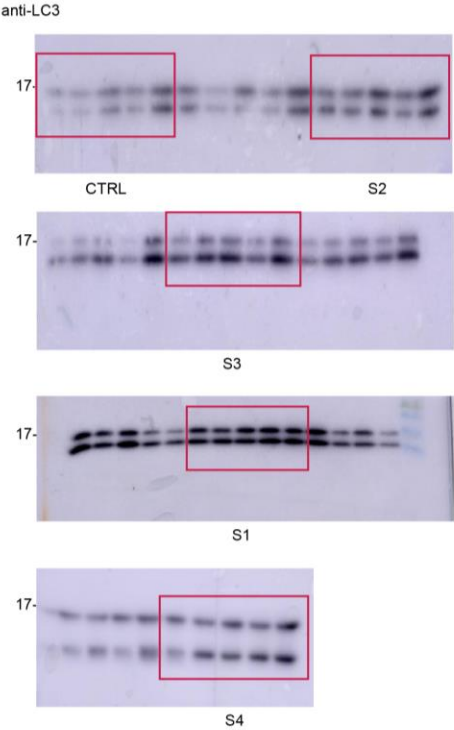
full blot for figure 4a



full blot for figure 6a



full blot for figure 6b



full blot for figure 6e

