

Supplementary file 1

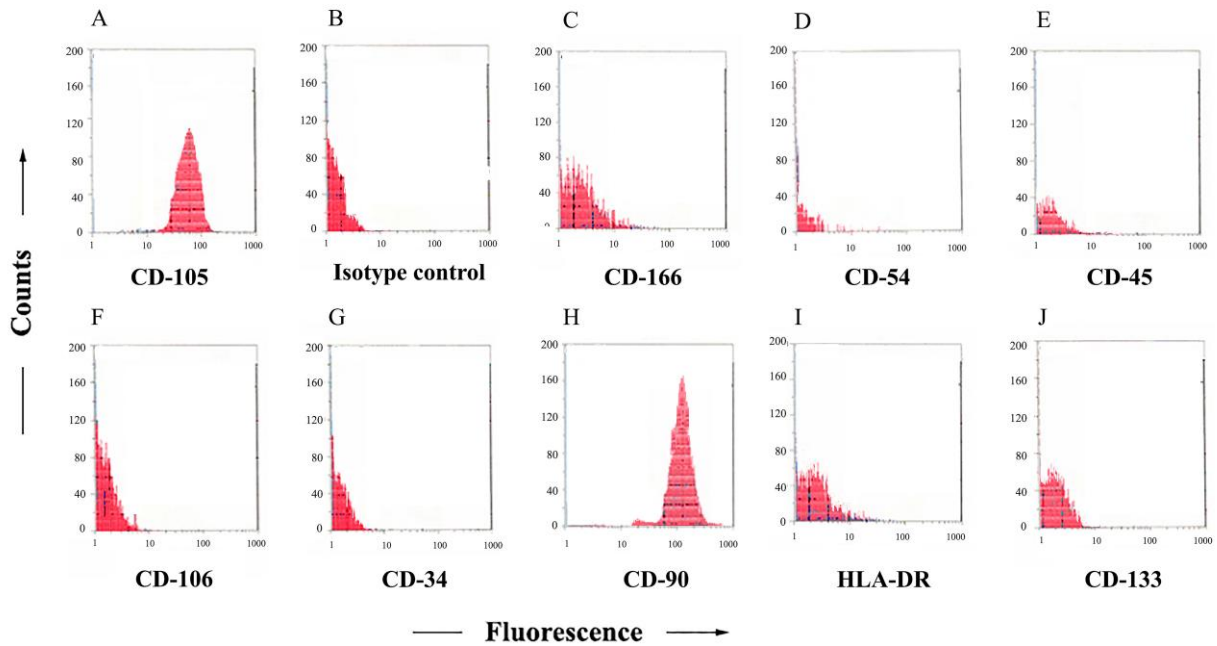


Figure S1. Immune-phenotyping studies of WJMSCs using flow cytometry by (A) CD-105, (C) CD-166, (D) CD-54, (E) CD-45, (F) CD-106, (G) CD-34, (H) CD-90, (I) HLA-DR, (J) CD-133 monoclonal antibodies. (B) Negative isotype-control antibodies were used to eliminate the effect of non-specific antibodies. Cells were positive for CD-105 and CD-90, and negative for CD-166, CD-54, CD-45, CD-106, CD-34, and HLA-DR surface antigens.