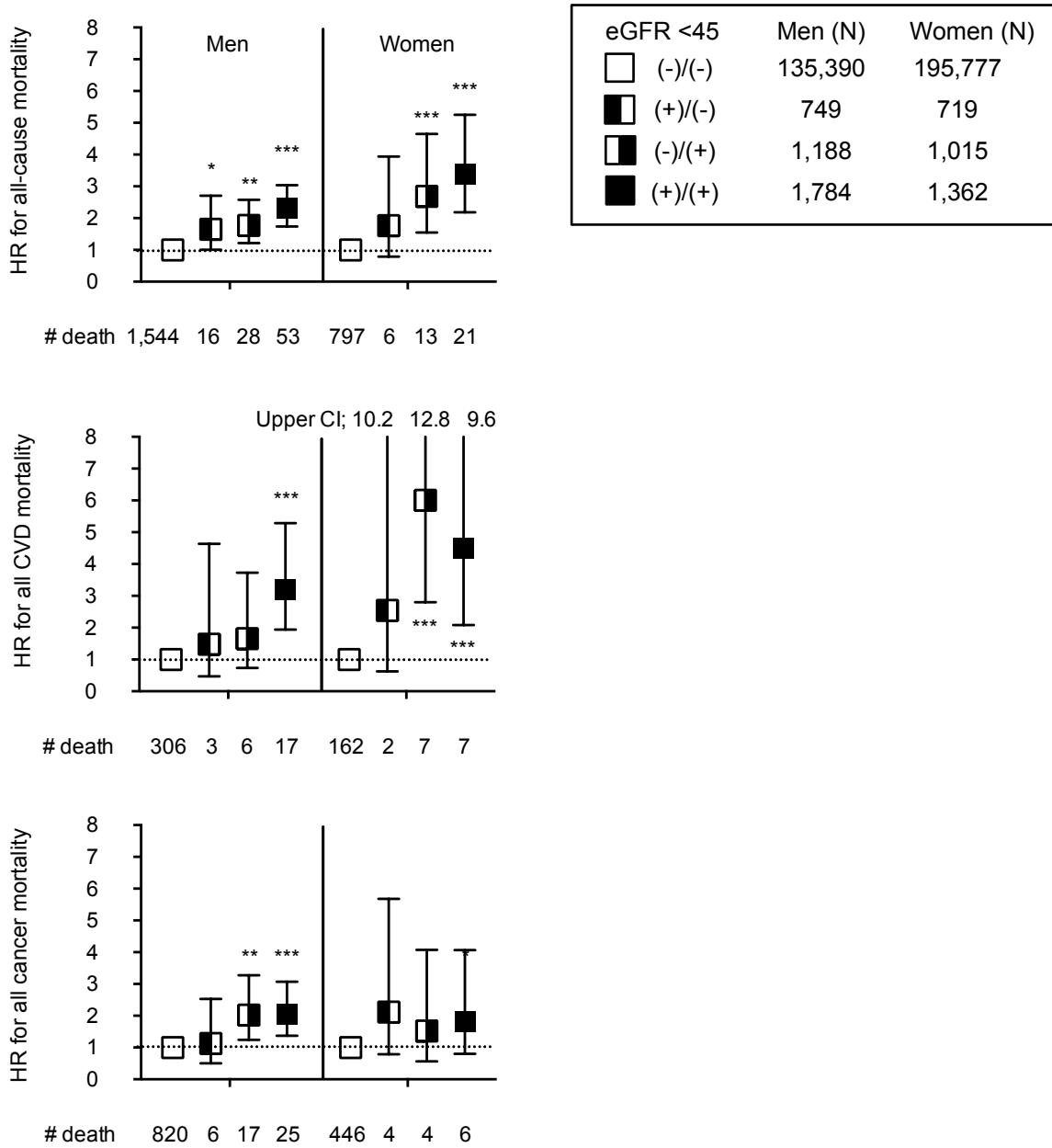


Supplemental Figure 1



S1 Fig. Multiple variable-adjusted hazard ratios for all-cause mortality and cause-specific mortality with and without advanced CKD determined by eGFR 45 ml/min/1.73 m²

Symbol and error bars indicate multiple variable-adjusted hazard ratios (HRs) and 95% confidence intervals (CIs) comparing to definitely without Low eGFR less than 45 ml/min/1.73 m² (-)/(-) as reference. Analyses were performed by sex, therefore, corresponding variables are similar to **Table 4**, except for sex.

Abbreviations: CVD, cardiovascular diseases. eGFR, estimated glomerular filtration ratio.