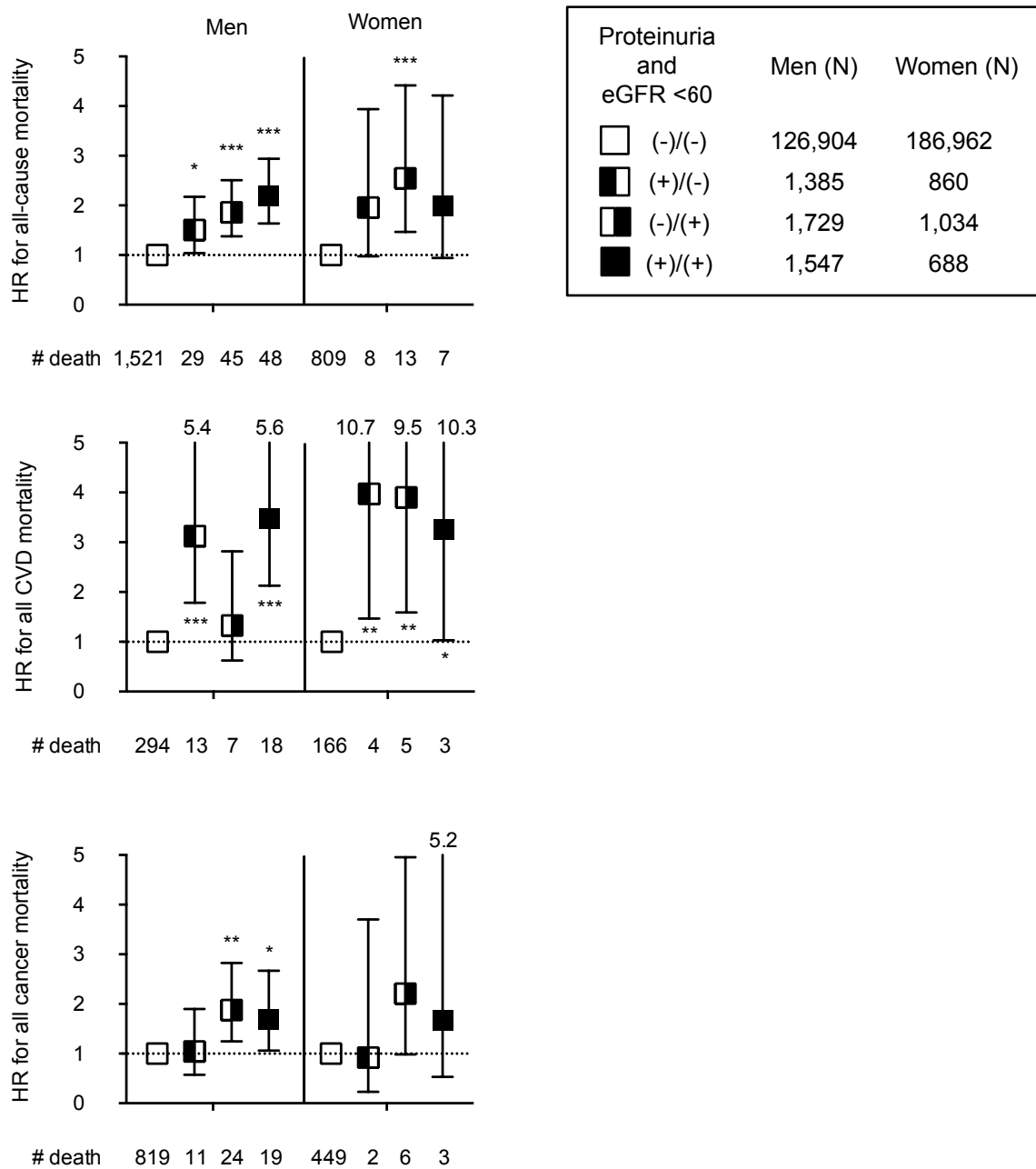


Supplemental Figure 2



S2 Fig. Multiple variable-adjusted hazard ratios for all-cause mortality and cause-specific mortality with and without proteinuria and low eGFR

Symbol and error bars indicate multiple variable-adjusted hazard ratios (HRs) and 95% confidence intervals comparing to definitely without proteinuria or Low eGFR less than 60 ml/min/1.73 m² (-)/(-) as reference. Analyses were performed by sex, therefore, corresponding variables are similar to **Table 4**, except for sex.

Abbreviations: CVD, cardiovascular diseases. eGFR, estimated glomerular filtration ratio.