

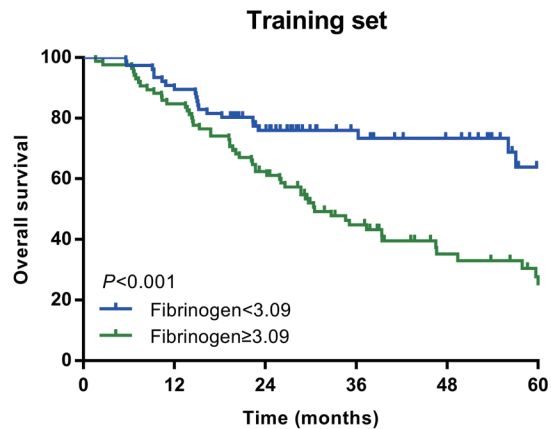
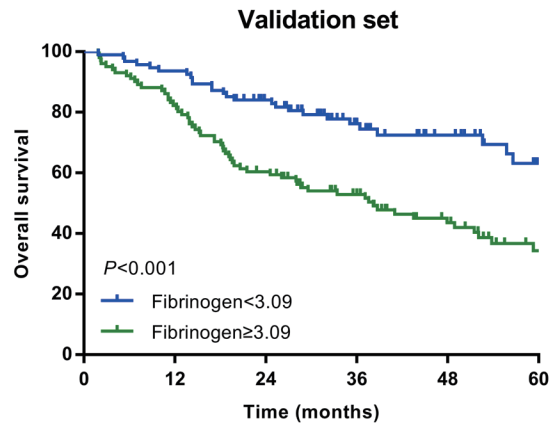
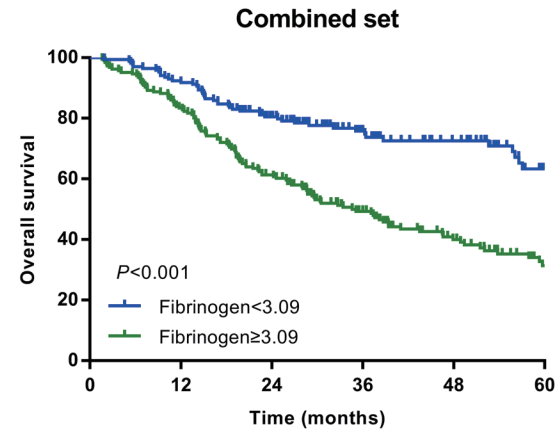
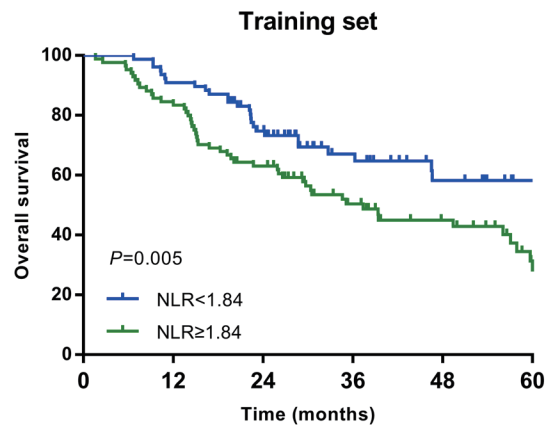
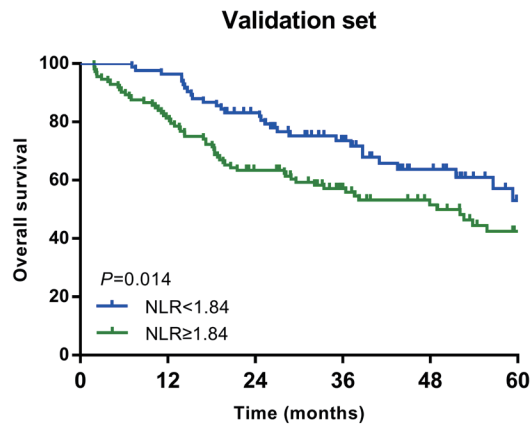
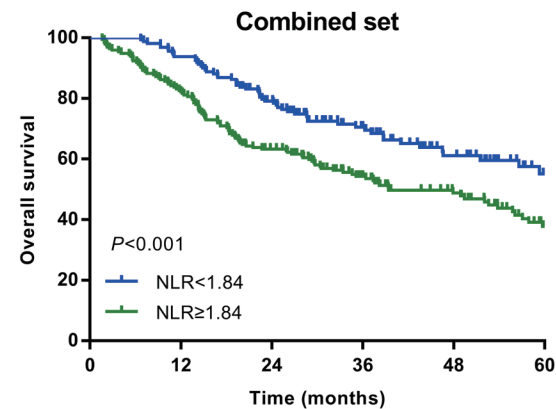
A**B****C****D****E****F**

Figure S1. Survival curves of patients with AEG and UGC according to the combination of fibrinogen concentration and NLR (F-NLR). A-C, Overall survival (OS) of patients with fibrinogen<3.09g/L and fibrinogen≥3.09g/L in the A, training set ($P<0.001$); B, validation set ($P<0.001$); and C, combined set ($P<0.001$). D-F, Overall survival (OS) of patients with NLR<1.84 and NLR≥1.84 in the D, training set ($P=0.005$); E, validation set ($P=0.014$); and F, combined set ($P<0.001$).

Table S1. Correlation between preoperative F-NLR and clinicopathologic characteristics of patients with AEG and UGC.

| Characteristics | F-NLR score | Training set | | | | Validation set | | | | Combined set | | | |
|-----------------------|-------------|--------------|----|----|------------------|----------------|----|----|------------------|--------------|-----|----|------------------|
| | | 0 | 1 | 2 | P | 0 | 1 | 2 | P | 0 | 1 | 2 | P |
| Sex | | | | | 0.337 | | | | 0.957 | | | | 0.605 |
| Female | | 12 | 15 | 8 | | 11 | 16 | 14 | | 22 | 32 | 22 | |
| Male | | 33 | 48 | 45 | | 38 | 63 | 53 | | 72 | 110 | 98 | |
| Age(years) | | | | | 0.007 | | | | 0.409 | | | | 0.041 |
| <60 | | 29 | 24 | 19 | | 22 | 29 | 22 | | 48 | 56 | 41 | |
| ≥60 | | 16 | 39 | 34 | | 27 | 50 | 45 | | 46 | 86 | 79 | |
| Tumor size(cm) | | | | | 0.002 | | | | 0.012 | | | | <0.001 |
| <5 | | 24 | 36 | 14 | | 31 | 32 | 25 | | 57 | 66 | 39 | |
| ≥5 | | 21 | 27 | 39 | | 18 | 47 | 42 | | 37 | 76 | 81 | |
| Location | | | | | 0.852 | | | | 0.036 | | | | 0.331 |
| UGC | | 28 | 37 | 30 | | 26 | 56 | 50 | | 54 | 94 | 79 | |
| AEG | | 17 | 26 | 23 | | 23 | 23 | 17 | | 40 | 48 | 41 | |
| Differentiation | | | | | 0.507 | | | | 0.120 | | | | 0.072 |
| Well/Moderate | | 13 | 15 | 10 | | 17 | 21 | 12 | | 30 | 36 | 22 | |
| Poor | | 32 | 48 | 43 | | 32 | 58 | 55 | | 64 | 106 | 98 | |
| Surgical procedure | | | | | 0.613 | | | | 0.104 | | | | 0.340 |
| Proxima gastrectomy | | 24 | 39 | 29 | | 37 | 45 | 42 | | 63 | 83 | 70 | |
| Total gastrectomy | | 21 | 24 | 24 | | 12 | 34 | 25 | | 31 | 59 | 50 | |
| PLR | | | | | 0.001 | | | | <0.001 | | | | <0.001 |
| <110 | | 31 | 29 | 16 | | 34 | 30 | 12 | | 65 | 64 | 25 | |
| ≥110 | | 14 | 34 | 37 | | 15 | 49 | 55 | | 29 | 78 | 95 | |
| LMR | | | | | <0.001 | | | | 0.003 | | | | <0.001 |
| <3.25 | | 4 | 25 | 24 | | 4 | 19 | 24 | | 9 | 45 | 47 | |
| ≥3.25 | | 41 | 38 | 29 | | 45 | 60 | 43 | | 85 | 97 | 73 | |
| SII | | | | | <0.001 | | | | <0.001 | | | | <0.001 |
| <451 | | 39 | 37 | 9 | | 47 | 42 | 13 | | 86 | 80 | 21 | |
| ≥451 | | 6 | 26 | 44 | | 2 | 37 | 54 | | 8 | 62 | 99 | |
| pTNM stage | | | | | 0.104 | | | | 0.101 | | | | 0.009 |
| I | | 9 | 4 | 6 | | 11 | 15 | 5 | | 21 | 19 | 9 | |
| II | | 15 | 27 | 14 | | 17 | 20 | 20 | | 34 | 44 | 36 | |
| III | | 21 | 32 | 33 | | 21 | 44 | 42 | | 39 | 79 | 75 | |
| Adjuvant chemotherapy | | | | | 0.655 | | | | 0.650 | | | | 0.351 |

| | | | | | | | | | |
|-----|----|----|----|----|----|----|----|----|----|
| Yes | 21 | 28 | 28 | 26 | 46 | 34 | 41 | 64 | 63 |
| No | 24 | 35 | 25 | 23 | 33 | 33 | 53 | 78 | 57 |

AEG: adenocarcinoma of esophagogastric junction; UGC: upper gastric cancer; PLR: platelet-lymphocyte ratio; LMR: lymphocyte-monocyte ratio; SII:(SII=N×P/L), which was based on neutrophil (N), platelet (P) and lymphocyte (L) counts; F-NLR: combination of fibrinogen concentration and neutrophil-lymphocyte ratio.

Table S2. The correlation between fibrinogen and NLR of patients with AEG and UGC

| Patient cohort | Item | | NLR | | P |
|----------------|------------|----------|-----------|------------|------------------|
| | | | <1.84(%) | ≥1.84(%) | |
| Training set | Fibrinogen | <3.09(%) | 45(28.0%) | 31(19.2%) | 0.030 |
| | | ≥3.09(%) | 32(19.9%) | 53(32.9%) | |
| Validation set | Fibrinogen | <3.09(%) | 49(25.1%) | 45(23.1%) | <0.001 |
| | | ≥3.09(%) | 34(17.4%) | 67(34.4%) | |
| Combined set | Fibrinogen | <3.09(%) | 94(26.4%) | 76(21.4%) | <0.001 |
| | | ≥3.09(%) | 66(18.5%) | 120(33.7%) | |

NLR: neutrophil-lymphocyte ratio; AEG: adenocarcinoma of esophagogastric junction; UGC: upper gastric cancer.