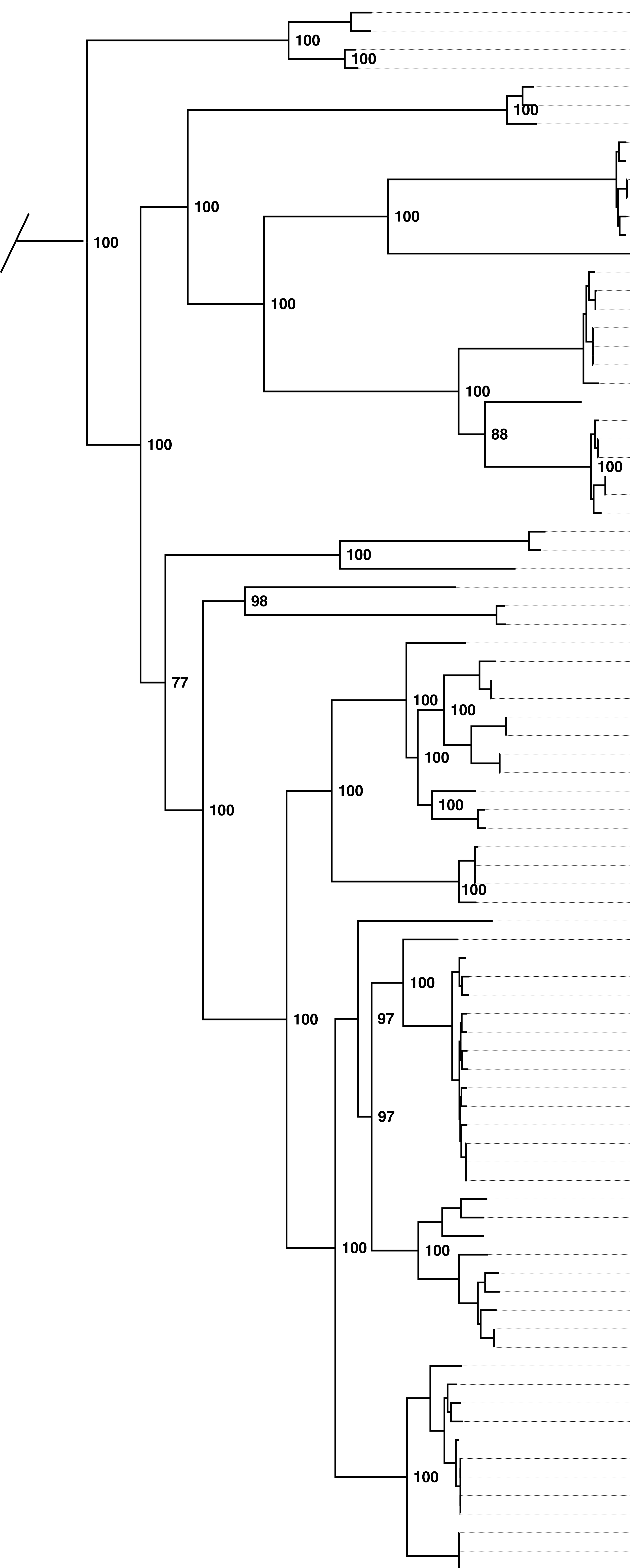


HopAA effector



- Pseudomonas sp. NFACC45
- Pseudomonas sp. NFACC39
- Pseudomonas sp. A214
- Pseudomonas brassicacearum GCA001017815
- Pseudomonas fluorescens GCA000836415
- Pseudomonas chlororaphis GCA001023535
- Pseudomonas sp. P97-38
- Pseudomonas sp. NFACC09
- Pseudomonas sp. 7SR1
- Pseudomonas sp. NFACC47
- Pseudomonas sp. NFACC43
- Pseudomonas sp. NFACC49
- Pseudomonas sp. NFACC32
- Pseudomonas sp. Pf153
- Pseudomonas corrugata CFBP 5454
- Pseudomonas corrugata GCA001412195
- Pseudomonas corrugata**
- Pseudomonas corrugata GCA001411965
- Pseudomonas corrugata GCA900106085
- Pseudomonas corrugata DSM 7228
- Pseudomonas corrugata GCA001412065
- Pseudomonas sp. SHC52
- Pseudomonas mediterranea
- Pseudomonas mediterranea GCA001412045
- Pseudomonas mediterranea GCA001412185
- Pseudomonas mediterranea GCA900106005
- Pseudomonas mediterranea CFBP 5447**
- Pseudomonas mediterranea GCA001412005
- Pseudomonas frederiksbergensis
- Pseudomonas fluorescens GCA000952735
- Pseudomonas fluorescens Pf29Arp
- Pseudomonas brassicacearum DF41**
- Pseudomonas sp. Q12-87
- Pseudomonas fluorescens Q2-87
- Pseudomonas sp. NFACC04
- Pseudomonas sp. NFACC13
- Pseudomonas sp. NFACC14
- Pseudomonas sp. NFACC15
- Pseudomonas sp. NFIX10
- Pseudomonas sp. NFACC06
- Pseudomonas sp. NFACC52
- Pseudomonas sp. NFACC56
- Pseudomonas sp. N2C3**
- Pseudomonas sp. NFACC24
- Pseudomonas sp. NFACC37
- Pseudomonas thivervalensis GCA900102295
- Pseudomonas thivervalensis GCA001269655
- Pseudomonas thivervalensis
- Pseudomonas thivervalensis GCA001269685
- Pseudomonas fluorescens GCA001468775
- Pseudomonas sp. Root401
- Pseudomonas fluorescens Wood1R
- Pseudomonas brassicacearum GCA001269635
- Pseudomonas sp. WCS365**
- Pseudomonas brassicacearum NFM421**
- Pseudomonas brassicacearum GCA001746815
- Pseudomonas brassicacearum 51MFCVI2
- Pseudomonas sp. URIL14HWK12
- Pseudomonas brassicacearum GCA000800585
- Pseudomonas fluorescens GCA000876175
- Pseudomonas brassicacearum GCA001449085
- Pseudomonas brassicacearum PP1-210F
- Pseudomonas brassicacearum GCA900103245
- Pseudomonas fluorescens Q8r1-96
- Pseudomonas sp. Ep R1
- Pseudomonas kilonensis
- Pseudomonas fluorescens F113
- Pseudomonas fluorescens S12
- Pseudomonas sp. A25
- Pseudomonas kilonensis GCA001269725
- Pseudomonas sp. CFI168
- Pseudomonas kilonensis GCA001269885
- Pseudomonas kilonensis GCA900105635
- Pseudomonas sp. N2E2**
- Pseudomonas sp. NFACC05
- Pseudomonas sp. NFACC46
- Pseudomonas sp. NFACC08
- Pseudomonas sp. NFACC07
- Pseudomonas sp. NFACC54
- Pseudomonas sp. NFACC48
- Pseudomonas sp. NFACC51
- Pseudomonas sp. NFACC44
- Pseudomonas sp. NFACC23
- Pseudomonas sp. NFACC17
- Pseudomonas sp. NFACC16