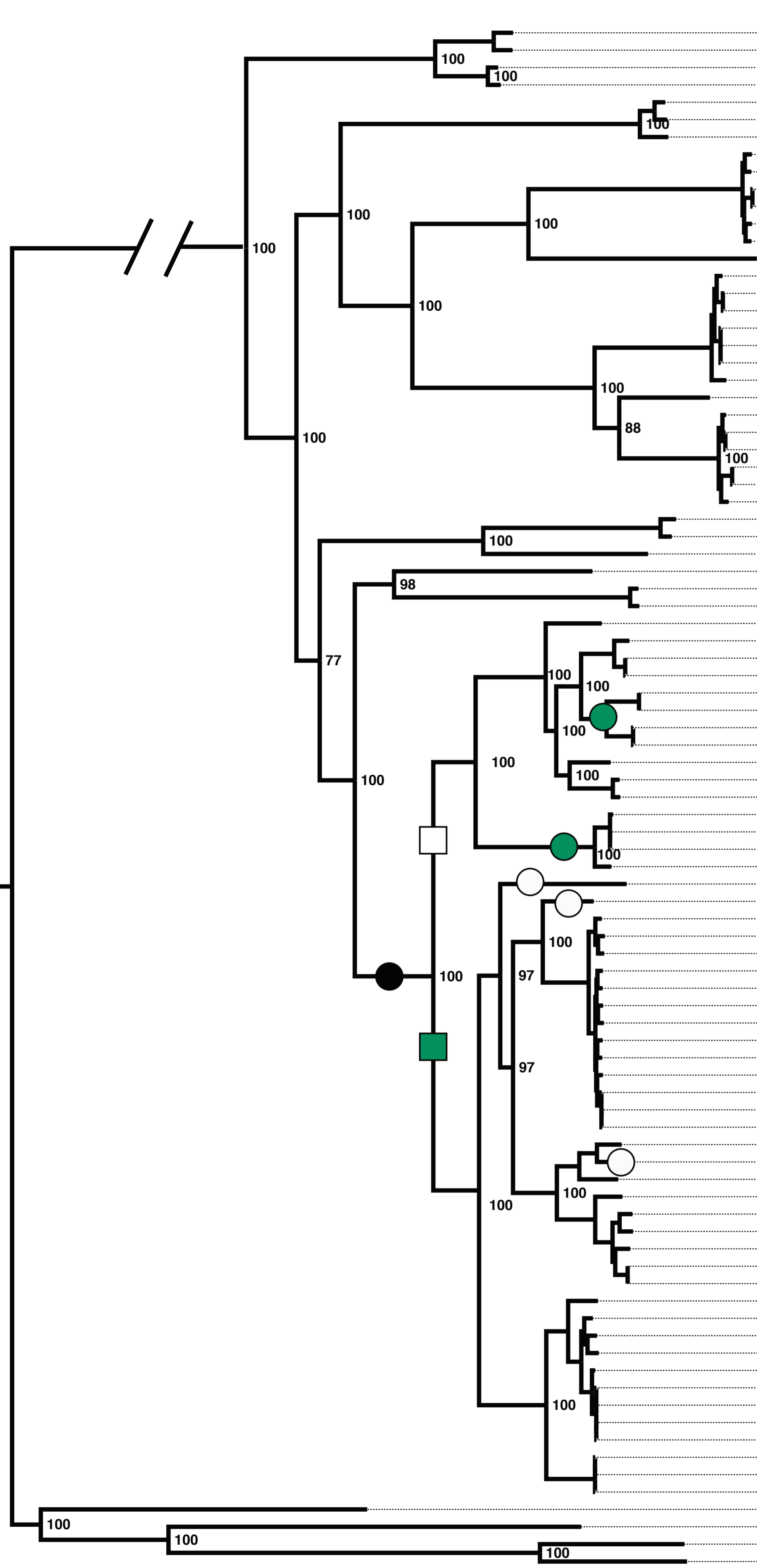
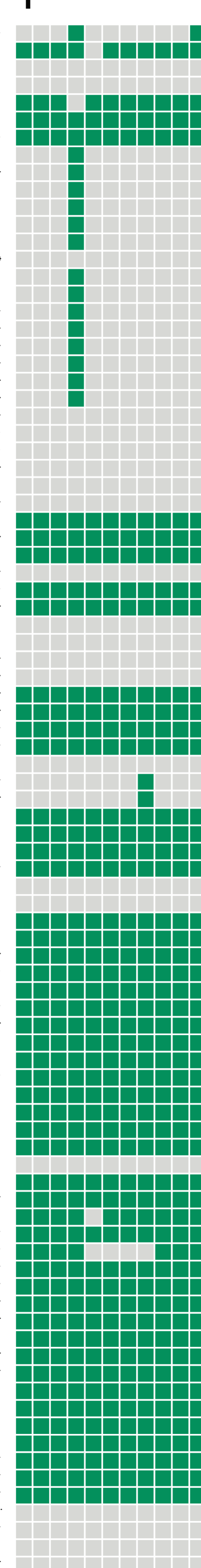


Species phylogeny



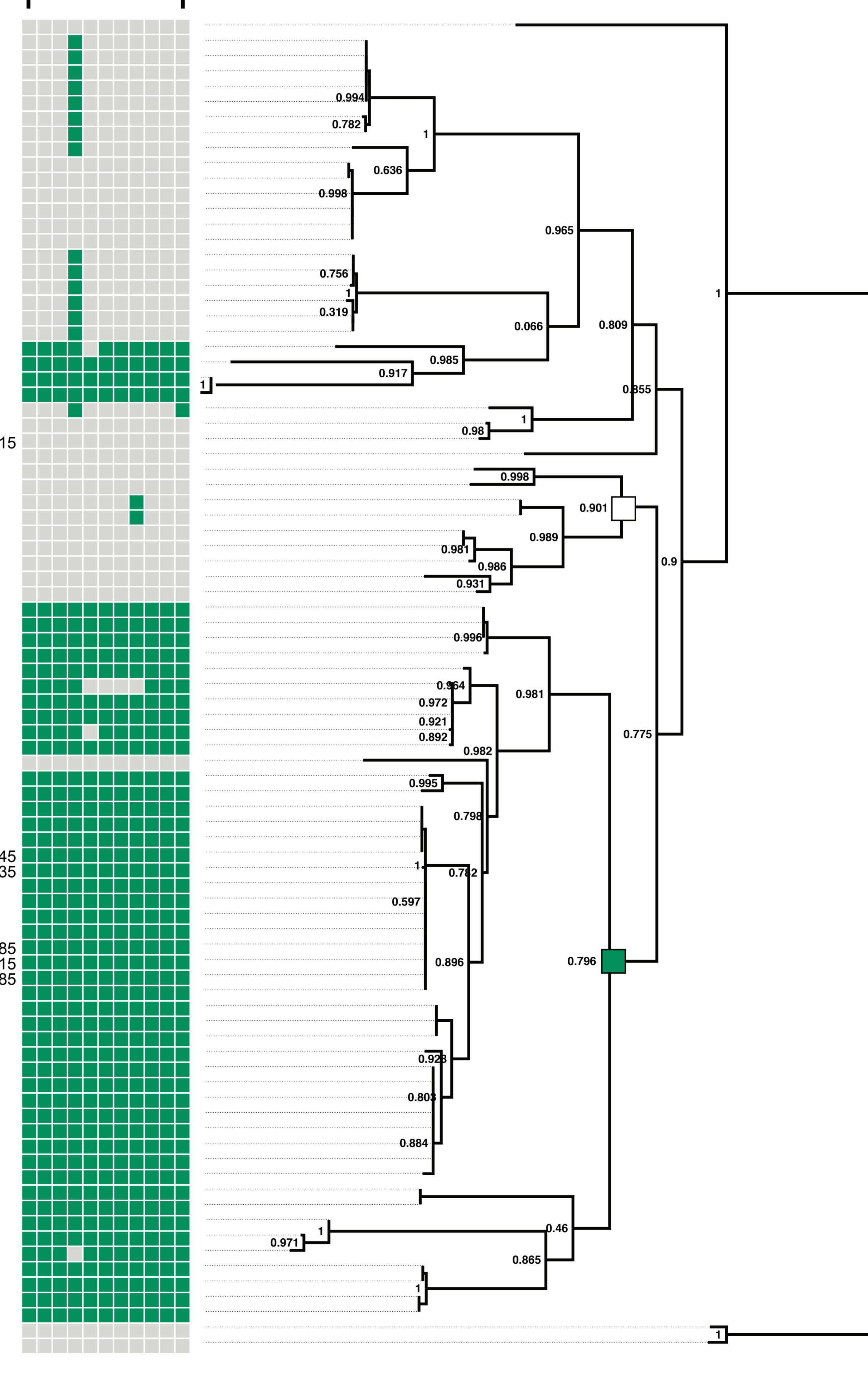
T3SS island



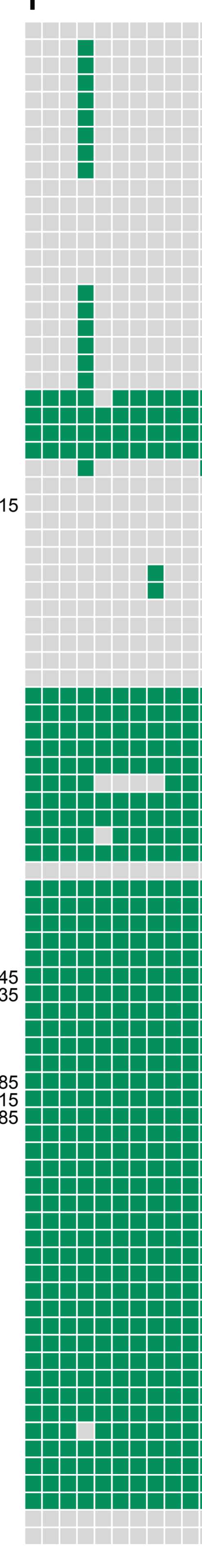
- Pseudomonas* sp. NFACC45
- Pseudomonas* sp. NFACC39
- Pseudomonas* sp. A214
- Pseudomonas brassicacearum* GCA001017815
- Pseudomonas fluorescens* GCA000836415
- Pseudomonas chlororaphis* GCA001023535
- Pseudomonas* sp. P97-38
- Pseudomonas* sp. NFACC09
- Pseudomonas* sp. 7SR1
- Pseudomonas* sp. NFACC47
- Pseudomonas* sp. NFACC43
- Pseudomonas* sp. NFACC49
- Pseudomonas* sp. NFACC32
- Pseudomonas* sp. Pf153
- Pseudomonas corrugata* CFBP 5454
- Pseudomonas corrugata* GCA001412195
- Pseudomonas corrugata***
- Pseudomonas corrugata* GCA001411965
- Pseudomonas corrugata* GCA900106085
- Pseudomonas corrugata* DSM 7228
- Pseudomonas corrugata* GCA001412065
- Pseudomonas* sp. SHC52
- Pseudomonas mediterranea*
- Pseudomonas mediterranea* GCA001412045
- Pseudomonas mediterranea* GCA001412185
- Pseudomonas mediterranea* GCA900106005
- Pseudomonas mediterranea* CFBP 5447**
- Pseudomonas mediterranea* GCA001412005
- Pseudomonas frederiksbergensis*
- Pseudomonas fluorescens* GCA000952735
- Pseudomonas fluorescens* Pf29Arp
- Pseudomonas brassicacearum* DF41**
- Pseudomonas* sp. Root401
- Pseudomonas kilonensis*
- Pseudomonas* sp. NFACC37
- Pseudomonas* sp. NFACC24
- Pseudomonas* sp. NFACC14
- Pseudomonas* sp. NFACC15
- Pseudomonas* sp. NFACC13
- Pseudomonas* sp. NFACC14
- Pseudomonas* sp. NFACC15
- Pseudomonas* sp. NFACC10
- Pseudomonas* sp. NFACC06
- Pseudomonas* sp. NFACC52
- Pseudomonas* sp. NFACC56
- Pseudomonas* sp. N2C3**
- Pseudomonas* sp. NFACC24
- Pseudomonas* sp. NFACC37
- Pseudomonas thivervalensis* GCA900102295
- Pseudomonas thivervalensis* GCA001269655
- Pseudomonas thivervalensis* GCA001269685
- Pseudomonas fluorescens* S12
- Pseudomonas* sp. CF1168
- Pseudomonas kilonensis* GCA001269885
- Pseudomonas kilonensis* GCA900105635
- Pseudomonas* sp. A25
- Pseudomonas kilonensis* GCA001269725
- Pseudomonas fluorescens* GCA001468775
- Pseudomonas fluorescens* F113
- Pseudomonas* sp. Ep R1
- Pseudomonas brassicacearum* NFM421**
- Pseudomonas brassicacearum* PP1-210F
- Pseudomonas fluorescens* Q8r1-96
- Pseudomonas brassicacearum* GCA900103245
- Pseudomonas brassicacearum* GCA001269635
- Pseudomonas fluorescens* GCA00876176
- Pseudomonas fluorescens* Wood1R
- Pseudomonas* sp. URIL14HWK12
- Pseudomonas brassicacearum* 51MFCV12
- Pseudomonas brassicacearum* GCA001449085
- Pseudomonas brassicacearum* GCA001746815
- Pseudomonas brassicacearum* GCA000800585
- Pseudomonas fluorescens* Q8r1-96
- Pseudomonas* sp. Ep R1
- Pseudomonas kilonensis*
- Pseudomonas fluorescens* F113
- Pseudomonas fluorescens* S12
- Pseudomonas* sp. A25
- Pseudomonas kilonensis* GCA001269725
- Pseudomonas* sp. CF1168
- Pseudomonas kilonensis* GCA001269885
- Pseudomonas kilonensis* GCA900105635
- Pseudomonas* sp. N2E2**
- Pseudomonas* sp. NFACC05
- Pseudomonas* sp. NFACC46
- Pseudomonas* sp. NFACC08
- Pseudomonas* sp. NFACC07
- Pseudomonas* sp. NFACC54
- Pseudomonas* sp. NFACC48
- Pseudomonas* sp. NFACC51
- Pseudomonas* sp. NFACC07
- Pseudomonas* sp. NFACC05
- Pseudomonas fluorescens* Q2-87
- Pseudomonas* sp. Q12-87
- Pseudomonas* sp. P97-38
- Pseudomonas chlororaphis* GCA001023535
- Pseudomonas fluorescens* GCA000836415
- Pseudomonas* sp. NFACC06
- Pseudomonas* sp. NFIX10
- Pseudomonas* sp. NFACC56
- Pseudomonas* sp. NFACC52
- Pseudomonas* sp. in5
- Pseudomonas* sp. 655
- Pseudomonas* sp. N1B4**
- Pseudomonas* sp. UW4**
- Pseudomonas fluorescens* Pf0-1
- Pseudomonas* sp. CH267

0.02

trx-like phylogeny



T3SS island



- Pseudomonas* sp. Pf153
- Pseudomonas corrugata* GCA900106085
- Pseudomonas corrugata* GCA001411965
- Pseudomonas corrugata* GCA001412195
- Pseudomonas corrugata* GCA001269905
- Pseudomonas corrugata***
- Pseudomonas corrugata* GCA001412065
- Pseudomonas corrugata* CFBP 5454
- Pseudomonas* sp. SHC52
- Pseudomonas mediterranea* GCA001412045
- Pseudomonas mediterranea* GCA001412185
- Pseudomonas mediterranea* CFBP 5447**
- Pseudomonas mediterranea* GCA900106005
- Pseudomonas mediterranea* GCA001412005
- Pseudomonas mediterranea*
- Pseudomonas* sp. NFACC49
- Pseudomonas* sp. NFACC32
- Pseudomonas* sp. 7SR1
- Pseudomonas* sp. NFACC09
- Pseudomonas* sp. NFACC43
- Pseudomonas* sp. NFACC47
- Pseudomonas* sp. NFACC39
- Pseudomonas fluorescens* Pf29Arp
- Pseudomonas frederiksbergensis*
- Pseudomonas fluorescens* GCA000952735
- Pseudomonas* sp. NFACC45
- Pseudomonas* sp. A214
- Pseudomonas brassicacearum* GCA001017815
- Pseudomonas brassicacearum* DF41**
- Pseudomonas* sp. Root401
- Pseudomonas kilonensis*
- Pseudomonas* sp. NFACC37
- Pseudomonas* sp. NFACC24
- Pseudomonas* sp. NFACC14
- Pseudomonas* sp. NFACC15
- Pseudomonas* sp. NFACC13
- Pseudomonas* sp. NFACC14
- Pseudomonas* sp. NFACC15
- Pseudomonas* sp. NFACC10
- Pseudomonas* sp. NFACC06
- Pseudomonas* sp. NFACC52
- Pseudomonas* sp. NFACC56
- Pseudomonas* sp. N2C3**
- Pseudomonas thivervalensis* GCA900102295
- Pseudomonas thivervalensis* GCA001269655
- Pseudomonas thivervalensis* GCA001269685
- Pseudomonas fluorescens* S12
- Pseudomonas* sp. CF1168
- Pseudomonas kilonensis* GCA001269885
- Pseudomonas kilonensis* GCA900105635
- Pseudomonas* sp. A25
- Pseudomonas kilonensis* GCA001269725
- Pseudomonas fluorescens* GCA001468775
- Pseudomonas fluorescens* F113
- Pseudomonas* sp. Ep R1
- Pseudomonas brassicacearum* NFM421**
- Pseudomonas brassicacearum* PP1-210F
- Pseudomonas fluorescens* Q8r1-96
- Pseudomonas brassicacearum* GCA900103245
- Pseudomonas brassicacearum* GCA001269635
- Pseudomonas fluorescens* GCA00876176
- Pseudomonas fluorescens* Wood1R
- Pseudomonas* sp. URIL14HWK12
- Pseudomonas brassicacearum* 51MFCV12
- Pseudomonas brassicacearum* GCA001449085
- Pseudomonas brassicacearum* GCA001746815
- Pseudomonas brassicacearum* GCA000800585
- Pseudomonas* sp. N2E2**
- Pseudomonas* sp. NFACC17
- Pseudomonas* sp. NFACC16
- Pseudomonas* sp. NFACC23
- Pseudomonas* sp. N2E2**
- Pseudomonas* sp. NFACC08
- Pseudomonas* sp. NFACC48
- Pseudomonas* sp. NFACC44
- Pseudomonas* sp. NFACC46
- Pseudomonas* sp. NFACC54
- Pseudomonas* sp. NFACC51
- Pseudomonas* sp. NFACC07
- Pseudomonas* sp. NFACC05
- Pseudomonas fluorescens* Q2-87
- Pseudomonas* sp. Q12-87
- Pseudomonas* sp. P97-38
- Pseudomonas chlororaphis* GCA001023535
- Pseudomonas fluorescens* GCA000836415
- Pseudomonas* sp. NFACC06
- Pseudomonas* sp. NFIX10
- Pseudomonas* sp. NFACC56
- Pseudomonas* sp. NFACC52
- Pseudomonas* sp. in5
- Pseudomonas* sp. 655

0.03