

Figure S1. Association between gene expression and clinical features. The T/N expression ratios of *FUT3*, *FUT4*, *FUT6*, *FUT7*, *ST3GAL3*, *ST3GAL4* and *ST3GAL6* were separated according to the histological type, stage, gender, age, metastasis, overall survival and smoking habits of the patients. Only significant differences are presented. (A) *FUT3* expression ratio according to the histological type. AC, n=14; SCC, n=4. (B) *FUT7* expression ratio according to patient gender. Female, n=4; male, n=10. (C) *FUT6* expression ratio according to patient smoking habits. Smoker, n=8; non-smoker, n=6. Box-and-whisker plots represent median values, and lower and upper quartiles (boxes), ranges and all values for each group (black dots). $0.05 < P < 0.1$, marginally significant; * $P < 0.05$. AC, adenocarcinoma; FUT, fucosyltransferase; SCC, squamous cell carcinoma; ST3GAL, α 2,3-sialyltransferase.

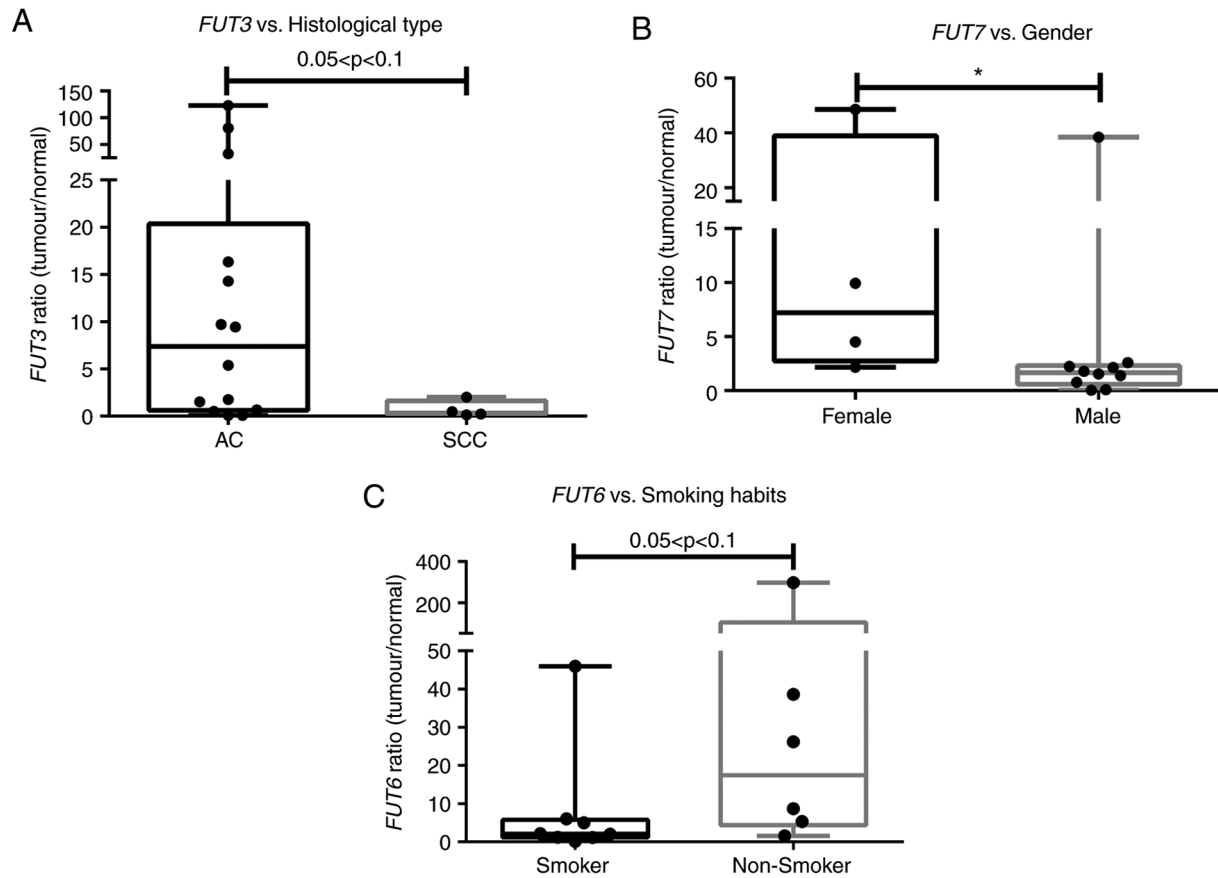


Figure S2. E-selectin expression in CHO-mock and CHO-E cells. Representative flow cytometry histograms for the expression of E-selectin in CHO-mock cells and CHO-E cells, after staining with anti-E-selectin monoclonal antibody (clone 68-5H11). The dotted line represents cells labelled with isotype control. CHO, Chinese hamster ovary cells; CHO-E, E-selectin-expressing CHO; CHO-mock, empty vector-transfected CHO.

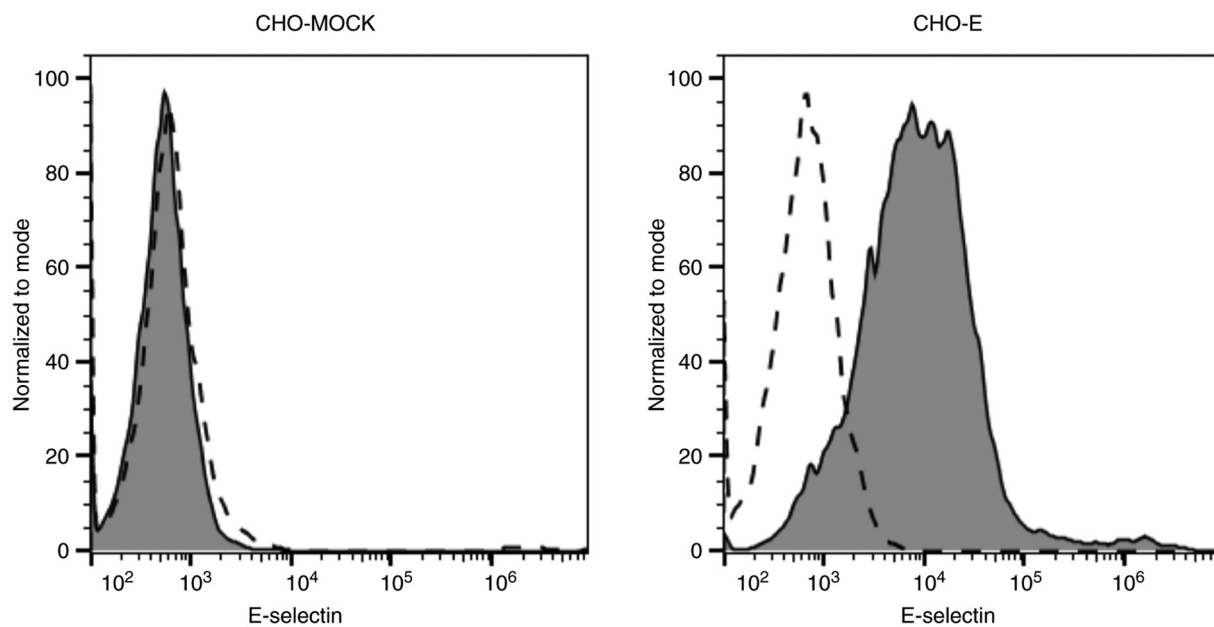


Table SI. Clinical features of the patients enrolled in the present study.

Patient	Histological type ^a	Stage ^b	Gender	Age	Metastasis (location)	5-year survival (months)	Smoking habits ^c
1	AC	IA1	F	83	No	Alive	0
2	AC	IIA	M	66	No	29	1
3	AC	IB	M	67	No	Alive	1
4	AC	IIIB	M	60	Yes (lung)	5	1
5	SCC	IA3	M	80	No	Alive	1
6	SCC	IA2	F	59	No	Alive	1
7	AC	IB	M	65	Yes (lung and bone)	26	1
8	SCC	IB	M	64	Yes (mediastinum, lung)	15	1
9	AC	IIIA	F	67	Yes (lung, bone)	50	0
10	AC	IA3	M	68	No	Alive	1
11	AC	IA2	M	63	Yes (lung, brain)	50	1
12	AC	IIIA	M	65	Yes (lung)	33	1
13	AC	IIIA	F	64	Yes (mediastinum, lung)	Alive	0
14	AC	IA3	F	71	No	Alive	0
15	AC	IIIA	M	52	Yes (bone)	Alive	0
16	SCC	IIIA	M	49	No	12	1
17	AC	IIIA	M	48	Yes (mediastinum, lung)	44	0
18	AC	IB	M	49	Yes (lung)	26	0

^aHistological type. ^bStage according to 8th TNM classification. ^c0 represents a person that does not smoke, and 1 represents a person that smokes. AC, adenocarcinoma; SCC, squamous cell carcinoma.