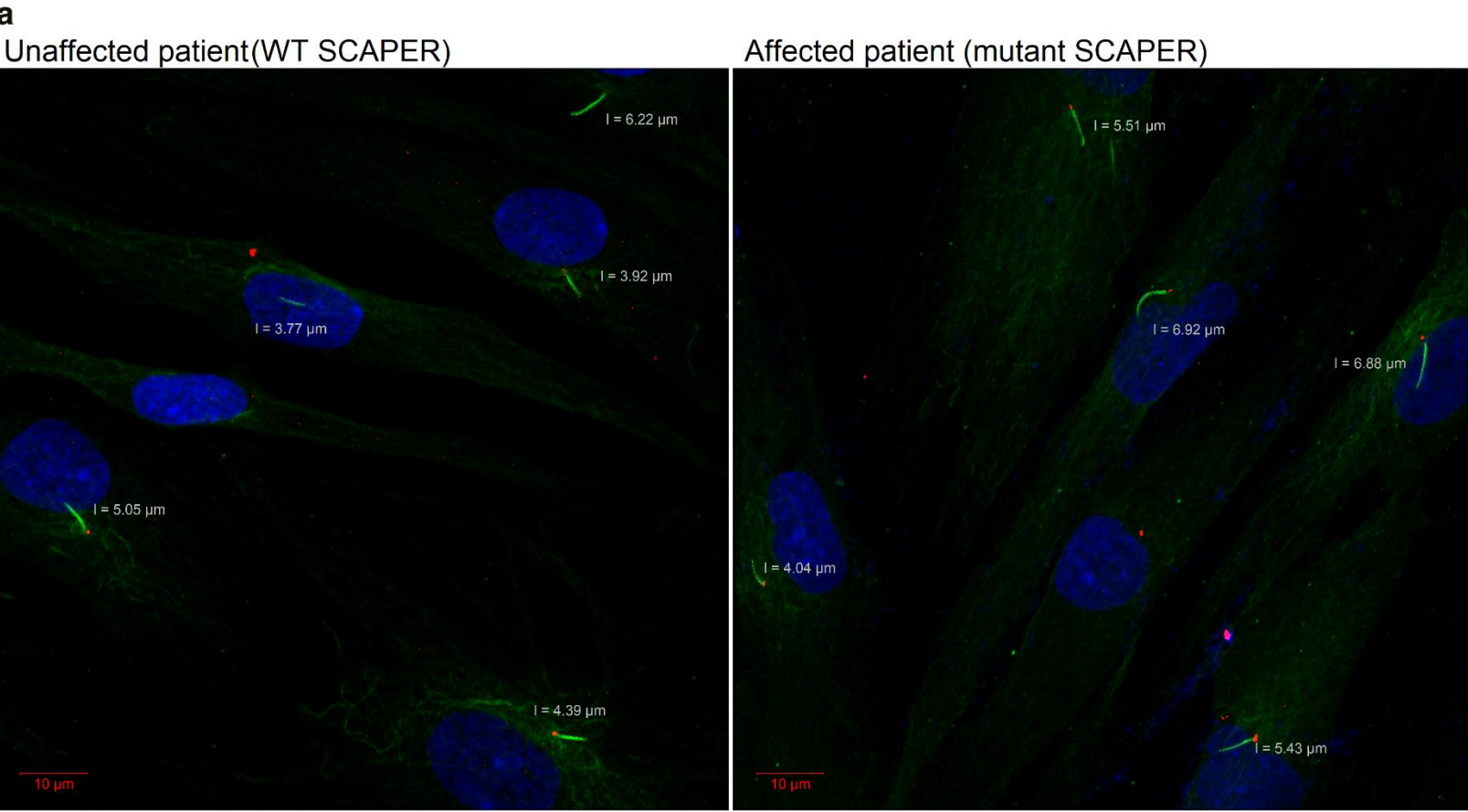


Sup. Figure 1. Primary cilia in patient-derived primary fibroblasts (a) Confocal images of unaffected and affected patient-derived primary fibroblasts, immuneostained for the primary cilia and basal body, and exemplary measurements of cilia length. (b) Scanning electron micrograph of primary cilia of WT (left) versus mutant (affected, right) non-transfected primary skin fibroblasts..



Acetylated alpha-tubulin (ciliary axoneme) Gamma-tubulin DNA

