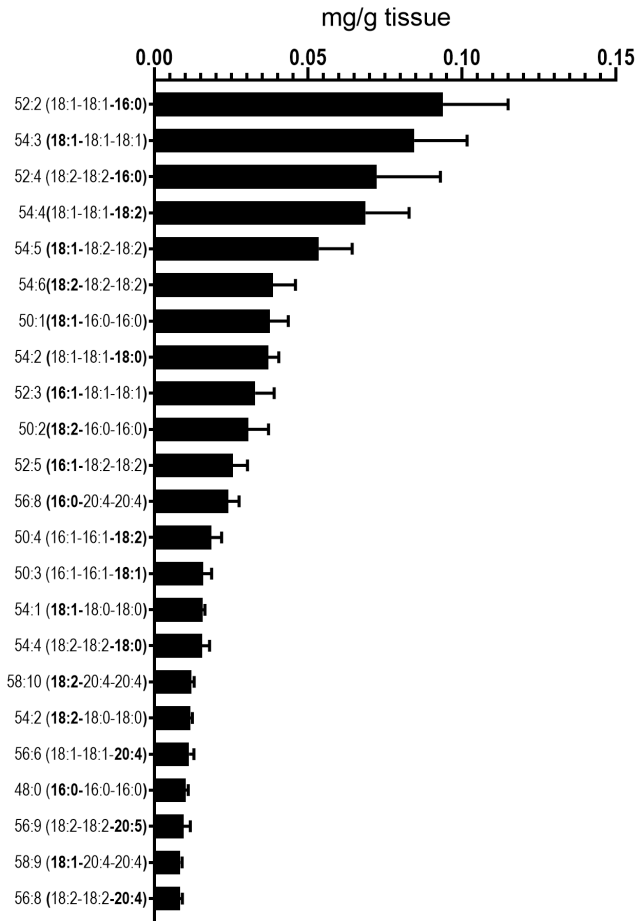
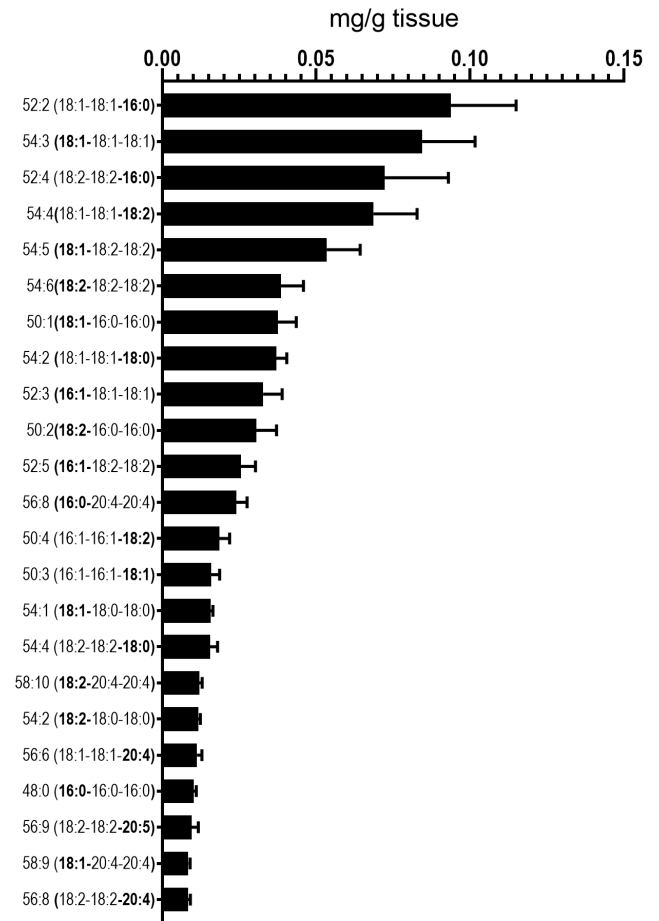


Supplemental Figure 1

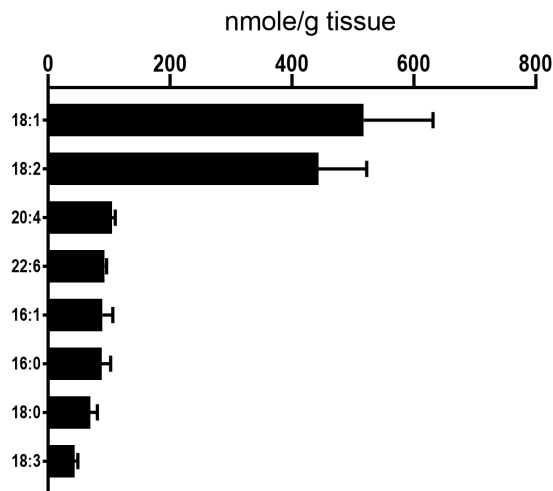
A.



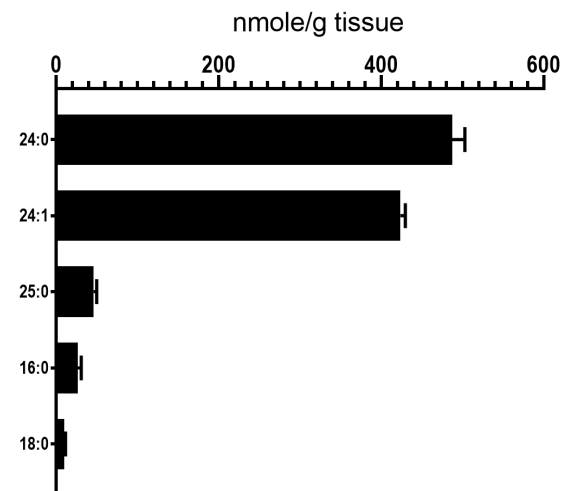
B.



C.



D.



Supplemental Figure 1: concentrations of individual lipid species shown in lipidomics heat maps. Waterfall plots of the 99% most abundant (A.) Triacylglycerol, (B.) Diacylglycerol, (C.) Cholesterol ester, and (D.) Ceramide species.

Supplemental Table 1

Component	Total.Carbon	Lipid.Class	2 (Control - CON-Veh	6 (Control - CON-Veh	13 (Control - CON-Veh	16 (Control - CON-Veh	21 (Control - CON-Veh-I	24 (Control - CON-Veh-I
CER 16:0	16:0	Ceramide	21.76873	38.55723	17.87069	27.36116	93.86485	17.62738
CER 18:0	18:0	Ceramide	8.032578	13.74015	7.290517	11.46742	13.93507	7.139164
CER 24:0	24:0	Ceramide	463.4499	524.4314	460.0862	502.0064	514.1623	513.7643
CER 24:1	24:1	Ceramide	427.4914	438.7045	413.9224	415.618	498.1847	408.8213
CER 25:0	25:0	Ceramide	37.38302	54.31137	42.64655	49.94061	40.51979	41.76426
CER 18:1		Ceramide	0.770342	1.059198	0.566897	0.879197	2.457097	0.768821
Total		Ceramide	958.8959	1070.804	942.3833	1007.273	1163.124	989.8852
CE 16:0	16:0	Cholesteryl	102.0849	63.55599	62.65006	122.335	92.20838	69.82915
CE 16:1	16:1	Cholesteryl	90.77004	44.82555	92.34428	128.0056	69.78482	67.99116
CE 18:0	18:0	Cholesteryl	93.28444	47.39088	49.99094	85.22585	56.28992	54.10493
CE 18:1	18:1	Cholesteryl	535.5684	290.1185	423.1257	824.0723	538.0974	408.1206
CE 18:2	18:2	Cholesteryl	441.7182	275.8611	401.4496	655.9555	493.3182	387.8593
CE 18:3	18:3	Cholesteryl	52.4065	35.02608	31.69875	53.46213	24.47565	38.48925
CE 20:4	20:4	Cholesteryl	90.5186	116.0675	107.9728	103.2384	139.9774	105.2141
CE 22:6	22:6	Cholesteryl	89.76427	96.94046	84.66591	99.0688	120.6795	91.53769
Total		Cholesteryl	1496.115	969.7861	1253.898	2071.363	1534.831	1223.146
DAG 14:0-1	8:1	Diacylglyce	0.207254	0.072398	0.175645	0.099038	0.118707	0.11638
DAG 16:0-1	8:0	Diacylglyce	9.64176	5.508772	8.089575	7.809388	9.298958	8.36281
DAG 16:0-1	10:1	Diacylglyce	71.97636	47.78947	67.94595	56.53485	66.8214	64.73554
DAG 16:0-1	10:2	Diacylglyce	51.05712	28.77193	41.81467	40.96728	40.85337	44.90083
DAG 16:0-2	12:4	Diacylglyce	0.638923	0.517661	0.709807	0.686714	0.701987	0.628017
DAG 16:1-1	8:1	Diacylglyce	2.077505	0.650292	1.624402	1.619232	1.427241	1.161074
DAG 16:1-1	8:2	Diacylglyce	0.414366	0.103111	0.253205	0.310327	0.328978	0.148314
DAG 16:1-1	10:1	Diacylglyce	0.688798	0.264094	0.522162	0.496728	0.5046	0.432149
DAG 16:1-1	10:2	Diacylglyce	9.339199	2.087252	6.581467	4.811095	5.796525	3.989256
DAG 16:1-1	10:3	Diacylglyce	5.372817	1.408889	3.301158	2.842105	3.157193	2.866116
DAG 18:0-1	10:0	Diacylglyce	6.202495	4.238597	5.826255	4.572973	5.879083	5.21405
DAG 18:0-1	12:0	Diacylglyce	3.290348	2.608187	2.886487	2.724324	2.866991	3.280165
DAG 18:1-1	12:1	Diacylglyce	30.18516	16.70175	22.30193	15.76984	20.93454	19.70083
DAG 18:1-1	12:2	Diacylglyce	90.29547	71.97661	84.16216	82.01138	86.91035	80.65289
DAG 18:1-1	12:3	Diacylglyce	78.90217	57.38012	69.24324	64.34424	69.02293	70.21488
DAG 18:2-1	12:2	Diacylglyce	27.70322	18.67135	21.88263	19.8	20.38666	18.57273
DAG 18:2-1	12:4	Diacylglyce	45.00591	23.17193	28.28571	25.73258	26.71856	32.60331
DAG 20:4-1	14:4	Diacylglyce	8.875903	9.291228	13.48494	12.16472	8.053092	7.990909
DAG 18:1-18:3		Diacylglyce	3.271438	1.294503	2.10417	1.858634	1.837276	2.250496
DAG 18:1-20:4		Diacylglyce	1.416835	0.784327	1.104093	0.659061	1.025962	0.924545
DAG 18:1-22:6		Diacylglyce	3.536179	2.19579	2.490348	1.648165	2.047922	2.791736
DAG 18:2-20:4		Diacylglyce	0.620486	0.318363	0.302317	0.265519	0.447811	0.446281
DAG 18:2-20:5		Diacylglyce	0.147498	0.065146	0.107514	0.07922	0.116131	0.112512
DAG 18:2-22:6		Diacylglyce	2.283152	1.544094	1.39668	1.085377	1.318416	1.81686
DAG 20:4-20:4		Diacylglyce	0.102398	0.121848	0.05495	0.096401	0.112228	0.08695
DAG 16:1-18:1 (2)		Diacylglyce	10.52817	2.54269	7.54749	5.773827	6.171786	5.352893
DAG 16:1-18:2 (2)		Diacylglyce	5.164806	1.29731	3.308108	3.044381	2.83697	2.975207
DAG 16:1-18:3 (2)		Diacylglyce	0.186548	0.028959	0.118286	0.157161	0.081306	0.062678
DAG 16:1-20:5 (2)		Diacylglyce	0.076822	0.031368	0.088425	0.07264	0.073551	0.079289
DAG 16:1-22:6 (2)		Diacylglyce	1.133185	0.347368	0.653514	0.562532	0.601167	0.626529
DAG 18:0-16:0 (2)		Diacylglyce	5.193171	3.466667	4.260232	3.981508	4.365532	4.990909

DAG 18:1-18:2 (2)		Diacylglyce	76.77479	48.63158	61.01931	55.20341	58.94093	62.20661
DAG 16:0-18:3		Diacylglyce	0.199926	0.149591	0.158896	0.157135	0.169017	0.16624
DAG 18:1-20:4 (2)		Diacylglyce	10.47617	6.346199	7.932046	6.46771	8.130646	7.735537
DAG 16:0-20:4 (2)		Diacylglyce	0.591412	0.452398	0.622471	0.614253	0.760028	0.553636
DAG 16:0-20:5		Diacylglyce	0.075593	0.077216	0.097969	0.101676	0.070949	0.099744
DAG 16:0-22:6		Diacylglyce	0.813132	0.494737	0.849498	0.785804	0.990938	0.739835
DAG 18:2-20:4 (2)		Diacylglyce	4.394222	2.85848	2.453282	2.455989	3.660042	3.384298
DAG 18:2-20:5 (2)		Diacylglyce	1.037452	0.370292	0.542548	0.703869	0.745768	0.809504
DAG 18:2-22:6 (2)		Diacylglyce	14.84675	11.73801	9.637066	6.055477	7.465184	13.46033
Total		Diacylglyce	634.855	408.9982	524.9709	466.205	503.4964	516.543
DAG 16:1-22:6		Diacylglyce	0.142629	0.04945	0.078857	0.067442	0.065796	0.06776
DAG 18:0-18:3		Diacylglyce	0.106085	0.053099	0.068108	0.081883	0.052912	0.072893
DAG 18:0-20:4		Diacylglyce	7.074721	7.307602	11.31892	9.811664	6.784712	6.468595
DAG 18:0-20:5		Diacylglyce	0.097529	0.048257	0.105151	0.071309	0.069673	0.084397
DAG 18:0-22:6		Diacylglyce	0.91501	0.785497	0.929653	0.973229	1.156053	0.961736
DAG 18:1-20:5		Diacylglyce	0.231624	0.113404	0.179212	0.136011	0.127739	0.157264
DAG 18:2-18:3		Diacylglyce	1.585844	0.600702	0.875676	0.907169	0.837331	0.957025
DAG 18:1-22:6 (2)		Diacylglyce	28.83782	18.71111	18.37761	12.00854	16.47394	22.74793
DAG 16:1-20:4 (2)		Diacylglyce	0.303506	0.158035	0.256911	0.231081	0.279444	0.21481
DAG 18:1-18:3 (2)		Diacylglyce	6.902167	2.977778	4.204633	4.109531	3.552467	4.490083
DAG 18:1-20:5 (2)		Diacylglyce	1.398162	0.662222	0.992896	0.897952	0.908881	1.255537
DAG 18:2-18:3 (2)		Diacylglyce	2.515036	1.160468	1.642703	1.782589	1.436748	1.822066
LPC 16:0	16:0	Lysophosph	118.4278	142.2489	98.46515	128.941	136.1336	128.6132
LPC 16:1	16:1	Lysophosph	9.505348	4.630196	7.355833	7.913532	8.059584	5.197213
LPC 20:6		Lysophosph	0.39385	0.54307	0.442671	0.36283	0.379321	0.36878
Total		Lysophosph	476.2888	507.5103	431.7325	486.7379	529.1874	485.7816
LPC 14:0		Lysophosph	1.318877	0.727277	0.879927	0.720404	0.71586	0.959582
LPC 18:3		Lysophosph	3.216578	3.149716	4.325018	3.73543	2.355969	3.217422
LPC 20:0		Lysophosph	3.391444	4.734807	2.841966	2.878383	1.469376	3.760976
LPC 20:1		Lysophosph	2.475401	1.868452	2.070726	1.371881	1.615663	1.9223
LPC 20:2		Lysophosph	3.296791	1.961011	3.25796	1.87863	3.842497	2.205575
LPC 20:3		Lysophosph	16.82888	12.41693	18.27733	12.44537	15.2931	15.36585
LPC 20:5		Lysophosph	6.192513	3.429438	7.369039	4.206401	2.961227	4.034843
LPC 18:0		Lysophosph	81.40107	101.7233	70.45488	91.95059	99.48302	90.52265
LPC 18:2		Lysophosph	99.52941	112.8667	87.71533	113.6597	110.1884	107.9791
LPC 14:2		Lysophosph	0.051289	0.069203	0.072198	0.075052	0.079295	0.040976
LPC 18:1		Lysophosph	68.24599	52.55591	60.65591	57.79001	61.03834	58.5993
LPC 16:2		Lysophosph	0.136524	0.15835	0.144343	0.129244	0.106679	0.171449
LPC 20:4		Lysophosph	61.87701	64.42704	67.40426	58.67939	85.4655	62.8223
PC 32:0	32:0	Phosphatid	51.93392	52.94314	49.90603	57.10685	68.39324	64.0447
PC 32:1	32:1	Phosphatid	44.14127	39.05933	40.80513	46.54247	45.64809	49.53569
PC 36:0	36:0	Phosphatid	51.99544	56.63659	48.87774	56.39452	56.3444	64.74549
PC 36:1	36:1	Phosphatid	57.33751	59.95179	52.38548	57.51233	61.55166	68.56092
PC 36:2	36:2	Phosphatid	75.07605	83.38072	68.02136	78.78356	82.36944	90.48017
PC 34:1		Phosphatid	78.03931	85.07169	76.52643	85.55616	85.57045	98.708
PC 40:5		Phosphatid	49.05269	53.85538	44.92792	47.8137	56.40075	58.69791
PC 40:6		Phosphatid	65.65309	70.22002	62.63962	66.53151	70.05009	79.26748
PC 38:2		Phosphatid	55.98405	59.27318	51.26108	59.94521	59.25235	72.62293
PC 34:0		Phosphatid	63.29479	70.4759	58.03631	67.03562	71.31246	80.5912

PC 34:2		Phosphatid	116.9923	137.6143	105.5206	134.3562	122.9681	160.274
PC 34:3		Phosphatid	39.41441	41.29543	39.62306	44.35068	42.07514	48.73107
PC 40:1		Phosphatid	12.11962	13.47219	12.15697	12.12055	14.07765	16.05335
PC 36:3		Phosphatid	79.25947	81.16687	74.89269	83.36438	80.5886	97.22855
PC 36:4		Phosphatid	72.27684	75.8492	73.04752	76.93151	85.01816	90.90844
PC 36:5		Phosphatid	35.26175	37.42398	32.68446	37.40274	43.64183	38.77722
PC 38:0		Phosphatid	37.6303	38.09147	34.36626	37.16164	35.22229	43.28046
PC 38:6		Phosphatid	80.30533	79.53152	79.43833	84.96438	83.13588	91.92069
PC 40:0		Phosphatid	10.70464	11.12485	9.629471	11.27671	11.25423	13.44485
PC 40:2		Phosphatid	17.88208	17.33251	15.78964	12.99726	12.95053	19.89474
PC 40:3		Phosphatid	29.81715	28.8356	26.30326	22.68493	20.93049	32.04182
PC 38:3		Phosphatid	56.5685	59.80717	52.11639	59.39726	60.16531	68.65177
PC 38:5		Phosphatid	72.32811	75.4932	67.75227	75.35342	73.99499	88.11824
PC 38:1		Phosphatid	74.75819	78.51916	65.10945	75.55069	77.61302	91.06417
PC 30:0		Phosphatid	8.702136	8.118912	7.668019	9.775343	17.60551	11.3801
PC 40:4		Phosphatid	46.4278	48.8937	42.52536	40.74521	41.3087	53.22134
PC 38:4		Phosphatid	67.34492	69.02967	60.20822	65.9726	72.48466	78.82624
Total		Phosphatid	1450.302	1532.467	1352.219	1507.627	1551.928	1771.072
SM 16:0	16:0	Sphingomy	33.63144	31.76143	32.17512	35.23288	39.95617	36.71377
SM 16:1	16:1	Sphingomy	11.11478	8.026576	9.592953	11.91233	18.73262	10.75068
SM 12:0	12:0	Sphingomy	0.595933	0.883535	0.664645	0.792986	0.688779	0.782422
SM 24:0	24:0	Sphingomy	72.56394	72.55624	60.95782	72.08767	75.201	84.43259
Total		Sphingomy	147.1183	138.2809	131.3756	152.4094	163.8722	166.7847
SM 18:0		Sphingomy	29.21219	25.05315	27.98505	32.38356	29.29368	34.10526
TAG 14:0-1	18:0	Triacylglyce	2.27E-05	2.79E-05	2.82E-05	3.63E-05	5.31E-05	2.51E-05
TAG 14:0-1	22:1	Triacylglyce	0.000298	0.000273	0.000188	0.000468	0.000443	0.000271
TAG 14:0-1	26:2	Triacylglyce	0.007024	0.00435	0.00605	0.008246	0.009003	0.004842
TAG 16:0-1	24:0	Triacylglyce	0.008844	0.010612	0.008879	0.012478	0.01309	0.007086
TAG 16:1-1	24:3	Triacylglyce	0.00507	0.002393	0.003581	0.007037	0.00728	0.002719
TAG 16:1-1	26:2	Triacylglyce	0.001063	0.000801	0.000762	0.001314	0.001291	0.00074
TAG 16:1-1	26:3	Triacylglyce	0.01794	0.009133	0.014202	0.022163	0.02196	0.011948
TAG 16:1-1	26:4	Triacylglyce	0.019852	0.011333	0.016146	0.026943	0.025448	0.016079
TAG 16:1-1	28:1	Triacylglyce	0.000887	0.00054	0.000709	0.000969	0.000857	0.000553
TAG 16:1-1	28:3	Triacylglyce	0.039509	0.017444	0.028599	0.045594	0.047127	0.020664
TAG 16:1-1	28:5	Triacylglyce	0.027816	0.015032	0.021973	0.037418	0.034575	0.021198
TAG 18:0-1	26:0	Triacylglyce	0.00396	0.004164	0.004512	0.005235	0.005256	0.003862
TAG 18:0-1	28:0	Triacylglyce	0.005873	0.005084	0.005883	0.007082	0.007592	0.005593
TAG 18:0-1	30:0	Triacylglyce	0.002355	0.002271	0.002643	0.002144	0.001918	0.002384
TAG 18:1-1	26:1	Triacylglyce	0.036977	0.025651	0.033199	0.054183	0.054889	0.031638
TAG 18:1-1	30:1	Triacylglyce	0.017233	0.013391	0.015964	0.016116	0.014994	0.014734
TAG 18:1-1	28:2	Triacylglyce	0.096374	0.050916	0.07683	0.150988	0.147521	0.068767
TAG 18:1-1	30:2	Triacylglyce	0.040274	0.030208	0.032557	0.045023	0.043125	0.03009
TAG 18:1-1	30:3	Triacylglyce	0.094282	0.049337	0.066574	0.127753	0.129266	0.058428
TAG 18:1-1	30:4	Triacylglyce	0.073651	0.041877	0.052743	0.106239	0.10438	0.051694
TAG 18:1-1	30:5	Triacylglyce	0.057088	0.032856	0.041536	0.082222	0.078402	0.041193
TAG 18:2-1	26:2	Triacylglyce	0.02923	0.019272	0.024075	0.04949	0.047541	0.027723
TAG 18:2-1	30:2	Triacylglyce	0.012097	0.011004	0.01037	0.013331	0.012287	0.012408
TAG 18:2-1	28:4	Triacylglyce	0.069539	0.035305	0.053762	0.130569	0.122635	0.052201
TAG 18:2-1	30:4	Triacylglyce	0.015798	0.012459	0.011666	0.022265	0.019464	0.012151

TAG 18:2-16:6	Triacylglyce	0.039386	0.025918	0.030128	0.058893	0.054983	0.03199
TAG 16:0-16:0-20:4	Triacylglyce	0.001693	0.001338	0.001824	0.002628	0.00343	0.001716
TAG 16:0-16:0-20:5	Triacylglyce	0.000622	0.000406	0.000622	0.001207	0.00096	0.00066
TAG 16:0-20:5-20:5	Triacylglyce	0.000628	0.000399	0.000527	0.000693	0.000583	0.000592
TAG 16:1-16:1-20:5	Triacylglyce	0.001484	0.000484	0.001311	0.003671	0.00222	0.001451
TAG 18:2-20:4-20:4	Triacylglyce	0.01336	0.01078	0.010225	0.013761	0.014112	0.012644
TAG 18:1-18:1-20:4	Triacylglyce	0.011686	0.008399	0.00942	0.015592	0.016936	0.008642
Total	Triacylglyce	0.825549	0.503737	0.647987	1.166401	1.139197	0.623073
TAG 18:2-18:2-20:5	Triacylglyce	0.009652	0.005382	0.007721	0.015459	0.011616	0.009135
TAG 16:1-20:4-20:4	Triacylglyce	0.006942	0.002354	0.005444	0.007862	0.007607	0.005359
TAG 18:2-20:5-20:5	Triacylglyce	0.000516	0.000282	0.000379	0.000601	0.000424	0.000415
TAG 18:1-18:1-20:5	Triacylglyce	0.005773	0.003482	0.004606	0.007972	0.006317	0.004802
TAG 18:1-20:4-20:4	Triacylglyce	0.009839	0.007628	0.007582	0.008817	0.009057	0.007932
TAG 18:0-18:0-20:5	Triacylglyce	0.000143	0.000124	0.000124	0.000222	0.000136	0.000152
TAG 16:1-16:1-20:4	Triacylglyce	0.001736	0.000812	0.001413	0.002452	0.003037	0.001623
TAG 18:1-20:5-20:5	Triacylglyce	0.00073	0.000379	0.000499	0.000594	0.000486	0.000486
TAG 18:2-18:2-20:4	Triacylglyce	0.008952	0.007187	0.006953	0.010342	0.013754	0.008466
TAG 20:4-20:4-20:4	Triacylglyce	0.001595	0.001347	0.001275	0.001404	0.002019	0.001492
TAG 16:1-20:5-20:5	Triacylglyce	7.78E-05	2.31E-05	4.58E-05	8.11E-05	6.96E-05	4.53E-05
TAG 18:0-20:5-20:5	Triacylglyce	0.000145	0.000103	0.000134	0.000106	8.99E-05	0.000121
TAG 18:0-20:4-20:4	Triacylglyce	0.001618	0.001506	0.001275	0.001835	0.002074	0.00144
TAG 18:0-18:0-20:4	Triacylglyce	0.002105	0.001984	0.002183	0.002998	0.003048	0.002212
TAG 16:0-20:4-20:4	Triacylglyce	0.023812	0.017687	0.020866	0.033906	0.035839	0.022706

29 (Control CON-Veh-l	36 (Control CON-Veh-l	3 (Control - CON-GH	7 (Control - CON-GH	12 (Control CON-GH	17 (Control CON-GH	19 (Control CON-GH-lr	28 (Control CON-GH-lr	32 (Control CON-GH-lr
15.54545	18.46664	31.52932	24.76519	27.49257	29.48475	21.92308	34.5485	28.55918
4.733182	7.931322	11.29536	6.852963	8.842769	9.187801	6.657692	9.478585	12.66792
428.7273	530.5907	492.6025	433.1883	438.9416	534.9438	489.0865	527.4705	534.9057
376.7727	440.782	468.0414	380.6602	430.0689	448.6998	409.4712	438.4633	482.8816
28.70455	40.0697	32.81257	28.22206	33.82095	46.76244	36.15865	42.47699	43.53345
0.597818	0.749528	1.145818	0.891493	1.063298	0.908957	0.78101	1.137102	0.883791
855.081	1038.59	1037.427	874.5802	940.2301	1069.988	964.0781	1053.575	1103.432
76.85087	61.54	83.77516	126.3839	77.91319	61.37119	83.80012	50.19852	134.9045
67.44209	62.35573	70.5177	130.0117	82.46179	47.73258	75.28686	25.65032	131.341
65.7184	56.73952	73.07425	112.8006	57.56919	45.46884	67.5731	23.10596	117.2567
465.1249	486.8338	620.9022	878.2751	510.5441	306.8048	472.3011	195.8001	1023.238
381.2566	460.3409	482.2484	661.8702	433.9515	276.5025	403.5287	200.3205	788.5553
29.45269	37.25607	30.02915	53.10148	36.61626	35.72917	43.10672	23.76896	56.26962
102.4678	123.8741	129.077	139.0391	137.7053	135.5685	186.4035	110.9017	137.1954
79.64421	75.43613	75.00625	113.9817	75.05197	91.52023	118.3714	98.71801	114.7961
1267.958	1364.376	1564.63	2215.464	1411.813	1000.698	1450.371	728.464	2503.557
0.13508	0.075925	0.292873	0.193019	0.187179	0.045728	0.080418	0.063832	0.06887
7.031984	4.240459	12.43801	10.65242	8.44264	4.430964	5.302865	6.017418	5.699233
63.00618	40.88092	86.28078	80.30161	73.61856	39.26812	48.03997	47.27578	42.21483
38.12491	29.18221	60.57019	56.21376	46.49456	25.41027	29.14057	24.87548	28.45013
0.621908	0.69934	0.923715	0.697335	0.716345	0.62601	0.551632	0.563239	0.474859
1.067893	0.654146	2.620302	2.229312	1.8838	0.484898	0.820253	0.602842	1.023376
0.207698	0.142502	0.660389	0.479649	0.385062	0.060093	0.139755	0.075163	0.246982
0.465257	0.279684	1.116285	0.939268	0.770123	0.27361	0.334097	0.28217	0.404194
4.902128	2.616069	12.62981	9.693119	7.77955	1.473948	3.168288	1.737021	3.482609
2.705559	1.88858	7.630238	5.152269	4.409282	1.050359	1.923278	1.263713	2.113044
5.020728	3.336585	9.926566	8.617862	6.646556	3.655735	4.01972	4.513063	3.692072
3.130542	2.19254	4.989201	4.359004	3.380711	2.161267	2.914057	3.003209	2.432992
19.61098	9.565567	46.31534	36.13177	27.77665	11.16481	17.29727	13.84446	12.94757
82.6987	70.70875	100.5097	100.1991	94.50326	68.02252	76.38907	77.94041	72.78261
68.68909	45.09039	91.02376	85.15081	77.45613	44.41098	59.98401	46.58824	48.0844
19.41826	14.02812	38.17711	31.94144	27.01958	15.61858	20.72219	20.03789	18.52941
25.42485	17.0858	43.07559	41.4817	30.88325	16.90809	20.69101	16.33889	15.33913
10.08099	11.64706	12.76976	10.49429	13.41581	15.3855	8.977215	10.68449	10.08414
1.720439	1.105567	3.649244	3.238946	2.511124	0.960929	1.401386	1.092101	1.23399
0.887028	0.568924	1.667041	1.398887	1.125163	0.621956	0.694097	0.553338	0.567621
2.638847	1.198795	4.69892	4.619912	3.015228	1.291795	1.882745	2.141849	1.056522
0.395086	0.165151	0.581339	0.58981	0.445627	0.22735	0.341292	0.273727	0.223159
0.054803	0.102551	0.165745	0.172621	0.092911	0.060093	0.063102	0.07233	0.080724
1.651503	0.808321	2.364492	2.711859	1.846991	1.045292	1.30497	1.659465	0.780997
0.064983	0.050617	0.124302	0.126395	0.08346	0.080994	0.085335	0.077995	0.05934
5.967056	2.969871	15.07387	11.52738	8.735025	1.594032	4.007728	2.150374	4.074169
2.399424	1.887805	7.332181	5.761054	4.106454	1.229472	1.865716	1.094851	2.080818
0.091742	0.067274	0.217892	0.150878	0.137343	0.028754	0.063102	0.028354	0.078353
0.042054	0.034631	0.128346	0.116908	0.092911	0.031364	0.048256	0.029757	0.046289
0.598929	0.27297	1.483801	1.266852	0.858883	0.282224	0.393338	0.382827	0.483146
3.6593	2.597991	7.959395	6.973353	4.871356	2.756369	3.257029	3.555997	2.805882

59.34935	38.50502	87.26566	82.98975	70.92966	35.77199	49.11925	39.13522	39.13044
0.124876	0.115877	0.244613	0.198422	0.162927	0.088847	0.186787	0.199994	0.110394
7.822649	4.911908	12.48726	10.77628	8.693256	4.914849	5.979214	4.128037	4.290537
0.535182	0.582095	0.820821	0.592709	0.636983	0.563181	0.498628	0.577265	0.48913
0.038224	0.073265	0.120311	0.081567	0.091553	0.04322	0.060608	0.03831	0.072506
0.815621	0.683329	1.505313	1.098975	0.842959	0.508205	0.541799	0.683697	0.75867
2.437474	1.722009	4.558963	4.580381	3.636548	1.847375	2.283278	2.066494	1.74844
0.47267	0.583386	0.864881	0.973265	0.791791	0.362027	0.43531	0.453782	0.48913
10.18971	5.27604	14.20821	19.53119	11.10805	7.169599	8.073018	10.30222	4.147826
491.1582	345.0722	758.9482	703.7574	594.1982	342.4352	411.0428	377.4868	355.3572
0.099402	0.066603	0.213849	0.197078	0.111733	0.035291	0.077924	0.04106	0.054621
0.109606	0.098574	0.143041	0.122627	0.075394	0.06402	0.055667	0.097879	0.051054
8.405765	10.9033	11.44536	8.860322	11.0454	14.17959	7.921919	9.400153	8.454476
0.105776	0.05728	0.102946	0.069338	0.070016	0.073165	0.060608	0.082286	0.054621
0.916184	0.953716	1.558704	1.076574	1.063031	0.939395	0.902998	1.106402	0.949719
0.117241	0.107897	0.201849	0.203903	0.177729	0.091457	0.11131	0.079426	0.103281
0.758051	0.498164	1.450108	1.508521	1.180769	0.491232	0.484957	0.50356	0.582813
20.26328	9.782496	32.94169	35.81552	21.82712	11.33709	14.34484	16.14912	7.936573
0.252272	0.158488	0.485184	0.353411	0.362088	0.145039	0.194199	0.214185	0.221985
3.772958	2.229469	7.241469	6.910103	4.735606	1.810894	2.417588	1.884981	2.449105
0.793878	0.661894	1.192225	1.552006	1.028571	0.471724	0.517095	0.627594	0.601918
1.264077	0.956298	2.499525	2.68287	1.935489	0.864912	0.872059	0.894912	1.018542
132.4221	142.7464	114.3904	121.7342	125.3517	132.2124	136.2414	126.4776	158.9309
7.545729	6.573186	8.52749	9.743522	7.434534	4.863092	5.455862	3.655102	10.26201
0.447839	0.427696	0.41259	0.311561	0.338263	0.374055	0.406552	0.362755	0.447926
499.8131	480.7088	498.4556	457.8868	475.9027	466.3899	542.5653	454.4367	579.0228
0.746332	0.706837	0.95506	1.276944	0.70322	0.739302	0.841448	0.724592	1.736722
3.790955	3.106907	3.168128	2.38804	3.792585	2.082041	3.026897	2.428163	6.849243
4.090452	2.925131	2.34741	2.093023	1.747564	2.612389	3.02069	4.933469	2.490849
1.759196	1.699292	2.172112	1.397143	1.346186	1.396523	2.030483	1.486286	1.334773
2.601005	1.925572	2.924303	2.338206	2.070763	2.068922	3.343448	2.558571	1.934852
16.36985	11.87185	17.43426	17.27043	12.80212	10.59761	17.20966	15.9649	14.02554
4.367839	3.825653	4.363347	3.685714	3.836441	3.183967	4.706897	5.947347	3.55023
84.54271	95.73535	86.56574	97.09635	90.74364	97.2431	100.6552	96.28163	115.0388
105.2462	96.52931	107.8884	78.19934	102.2606	105.8824	112.6552	89.48571	119.4944
0.080864	0.070036	0.041084	0.051409	0.042292	0.047357	0.046945	0.039784	0.067213
64.1407	52.10911	65.4502	53.10299	60.63559	49.68038	72.08276	53.74286	60.6241
0.163799	0.177932	0.205418	0.161322	0.10228	0.109218	0.214345	0.131676	0.210217
71.49749	60.27858	81.60956	67.03655	62.69492	53.29724	80.62759	50.21633	82.02502
56.30488	58.39289	54.25737	53.14392	51.45614	50.86047	51.51142	47.31118	52.6366
44.96707	45.09426	45.71695	44.32577	43.88039	38.72093	38.7522	36.43505	43.9966
55.04268	58.18724	50.8433	54.96798	49.24231	51.9593	52.08084	50.663	51.55404
58.8622	62.07172	57.33528	59.47777	53.26375	56.16628	59.74692	52.56138	56.20085
74.32683	81.59695	78.3344	86.3351	75.02623	76.0814	82.53427	77.03268	81.38553
85.55488	86.66963	82.2527	84.41032	80.64203	79.61861	83.67311	77.13156	80.16
49.81829	52.92034	49.27809	50.12247	47.39408	49.81395	49.56063	49.98077	47.89787
68.74024	74.23929	67.24132	70.01927	64.48519	65.2186	68.8471	64.8613	64.64681
56.76585	62.25452	57.90254	64.44638	54.86827	56.44884	56.21441	51.59242	55.5983
68.41098	71.80578	64.35249	66.65092	62.7385	65.57442	65.97891	61.43038	61.65447

128.3049	137.0993	116.7085	126.9008	122.5726	124.3256	124.1125	119.1431	133.6851
41.58659	46.06538	40.03385	42.71433	39.69647	39.38023	41.50439	37.72041	41.55574
13.73049	13.92701	11.5553	11.50389	11.05896	11.37558	12.67487	12.48778	11.09106
84.44634	87.19518	79.66851	81.60149	75.82849	77.53605	79.58172	75.6089	78.08681
80.22073	83.0365	75.68719	76.75598	70.89309	71.86395	73.25483	65.66218	77.32085
36.27439	35.44018	37.14503	39.63693	33.97913	34.15814	35.89455	38.24444	33.64085
40.68659	42.23802	33.97257	31.57973	31.0646	35.24651	38.37258	36.2373	31.97617
85.23659	84.83021	76.00233	78.60243	71.27898	75.32791	74.41476	78.64433	78.78128
12.02927	12.96731	9.090867	9.648492	9.224937	9.800581	12.12654	11.67701	10.76426
18.59268	17.43447	13.79282	13.19366	11.18082	12.17093	15.2478	18.13348	10.69277
31.01707	28.09394	25.32711	26.82375	20.37123	22.02907	25.72935	27.37819	20.02723
58.32439	63.88829	57.28276	59.11968	54.41128	57.98721	57.84886	53.0953	56.13957
74.7878	78.44367	70.98103	72.54834	68.7402	71.05814	73.32865	67.52101	69.39574
77.09268	77.20978	72.37817	78.16599	68.26291	69.26861	74.49912	69.79511	71.87745
9.534512	10.04367	9.626612	9.038607	9.631143	8.898488	8.72478	8.357814	8.644085
48.04024	47.36782	44.04669	45.06435	36.91396	39.47442	43.42355	42.55534	37.22553
70.33171	73.78229	69.69945	73.07429	66.11001	66.34884	71.1775	64.63389	66.43404
1529.031	1592.296	1450.513	1509.873	1384.216	1416.713	1470.816	1395.895	1433.07
35.96707	38.02222	37.50219	35.82095	35.40085	34.70233	34.6819	32.12414	35.56085
12.09512	13.41288	10.53633	11.16481	10.42934	9.658256	11.5993	9.166603	9.682723
0.578524	0.808658	0.380274	0.600821	0.556705	0.806965	0.72	0.869399	0.79057
71.17683	71.92003	68.19726	77.4498	66.30296	62.57093	67.07557	64.16918	67.02638
149.7261	155.1025	148.8553	151.9161	143.8662	134.0582	141.4511	130.8995	143.7601
29.90854	30.93875	32.23928	26.8797	31.1763	26.31977	27.37434	24.57017	30.69957
1.86E-05	3.63E-05	0.000119	0.00013	6.25E-05	2.1E-05	1.21E-05	2.53E-05	4.56E-05
0.000257	0.000354	0.000898	0.000683	0.000645	0.000179	0.000171	0.000179	0.000906
0.006107	0.005911	0.010593	0.010125	0.007652	0.003256	0.003772	0.003419	0.012077
0.009798	0.009157	0.015756	0.014941	0.011619	0.005912	0.006594	0.010853	0.015906
0.003721	0.004234	0.01103	0.009357	0.007276	0.001261	0.001593	0.00102	0.010856
0.000912	0.000979	0.00176	0.001613	0.001289	0.000557	0.000599	0.000736	0.002259
0.014202	0.014968	0.025394	0.025491	0.020199	0.008161	0.009178	0.006735	0.03315
0.016236	0.019605	0.023823	0.026368	0.021063	0.011324	0.011252	0.007574	0.03623
0.000789	0.000693	0.001368	0.001421	0.000839	0.000283	0.000363	0.000398	0.001294
0.031987	0.031619	0.056373	0.062418	0.038612	0.01163	0.017703	0.011568	0.074085
0.023094	0.026451	0.031142	0.03772	0.026908	0.014539	0.017781	0.010681	0.052498
0.004597	0.004637	0.006029	0.006134	0.005073	0.0029	0.003509	0.0042	0.006058
0.006274	0.005903	0.007911	0.008823	0.00659	0.003816	0.004736	0.004808	0.008191
0.002497	0.002323	0.00256	0.002614	0.002183	0.001664	0.002461	0.002269	0.002361
0.03475	0.036243	0.056077	0.066007	0.043479	0.021793	0.023686	0.021788	0.079681
0.016991	0.014837	0.022379	0.025174	0.015268	0.008474	0.011426	0.011331	0.019904
0.083413	0.091366	0.126302	0.194065	0.097912	0.050865	0.050626	0.043458	0.23312
0.038228	0.038893	0.054447	0.058762	0.041481	0.022312	0.030094	0.025817	0.071022
0.081247	0.085431	0.128376	0.177204	0.094228	0.043675	0.050878	0.0396	0.228912
0.066743	0.074321	0.104449	0.134051	0.077153	0.0389	0.042251	0.034266	0.201308
0.050061	0.059374	0.075485	0.098326	0.059576	0.031392	0.034009	0.027153	0.162005
0.02757	0.031012	0.04618	0.056066	0.036515	0.019803	0.017691	0.01884	0.082164
0.012279	0.011959	0.014853	0.021293	0.010776	0.007331	0.007398	0.010102	0.018178
0.055403	0.076598	0.082745	0.138809	0.071273	0.037769	0.034596	0.03143	0.202907
0.01455	0.019143	0.019149	0.025208	0.01582	0.011547	0.011696	0.011721	0.040522

0.033916	0.042302	0.046402	0.060991	0.040086	0.025491	0.026101	0.022728	0.106208
0.001605	0.00158	0.002143	0.0025	0.001934	0.001506	0.001703	0.001345	0.004035
0.000524	0.000753	0.000592	0.000961	0.000616	0.000504	0.000338	0.000464	0.001477
0.000566	0.00047	0.00055	0.000746	0.000472	0.000319	0.000394	0.000327	0.000926
0.000969	0.002474	0.001316	0.001842	0.001626	0.000798	0.000445	0.000485	0.004213
0.013309	0.015037	0.013201	0.018947	0.013589	0.010664	0.010401	0.009394	0.022849
0.010724	0.012822	0.013267	0.015325	0.011782	0.009581	0.009322	0.006859	0.025803
0.729238	0.823485	1.07444	1.412171	0.856855	0.462645	0.492807	0.427006	1.905839
0.007396	0.013215	0.007278	0.010926	0.008509	0.006189	0.004737	0.004352	0.0212
0.005779	0.006806	0.006491	0.009774	0.006417	0.002799	0.003142	0.002376	0.009493
0.000393	0.000544	0.000393	0.000572	0.000353	0.000262	0.000322	0.000273	0.000957
0.00505	0.007308	0.005462	0.007661	0.005509	0.003878	0.003489	0.00316	0.014905
0.009614	0.009675	0.010156	0.014557	0.009834	0.007614	0.007829	0.006705	0.01838
0.000138	0.000163	0.000123	0.000179	0.000129	0.000133	0.000104	0.000147	0.000301
0.001214	0.001814	0.002376	0.002324	0.002248	0.001158	0.000988	0.000628	0.003699
0.000534	0.000493	0.000646	0.000656	0.00047	0.000293	0.000497	0.0003	0.000891
0.008085	0.00942	0.010601	0.011394	0.009649	0.00646	0.007727	0.00456	0.018793
0.001578	0.001591	0.001647	0.002088	0.001689	0.00133	0.001316	0.001074	0.002701
5.42E-05	4.53E-05	7.26E-05	8.35E-05	5.04E-05	1.88E-05	3.43E-05	2.47E-05	0.00015
0.000126	9.83E-05	0.000119	0.000109	0.000109	8.2E-05	0.000142	8.41E-05	0.000147
0.00146	0.001723	0.001512	0.002929	0.001695	0.001812	0.00148	0.001902	0.003814
0.002247	0.002705	0.002134	0.002628	0.002334	0.002659	0.002077	0.001893	0.003459
0.022235	0.026402	0.022757	0.042177	0.024265	0.019732	0.016144	0.017954	0.045799

33 (Control CON-GH-Ir	4 (JAK2A - JAK2A-Veh	5 (JAK2A - JAK2A-Veh	10 (JAK2A JAK2A-Veh	11 (JAK2A JAK2A-Veh	15 (JAK2A JAK2A-Veh	25 (JAK2A JAK2A-Veh	20 (JAK2A JAK2A-Veh	26 (JAK2A JAK2A-Veh
27.9004	24.0338	31.11558	49.20425	18.02262	26.24863	16.55685	16.84811	22.89146
9.83317	8.495131	12.27368	12.56812	6.534897	10.51258	4.905394	5.819121	8.869746
557.8479	509.9396	552.7329	600.425	488.496	503.58	432.551	440.4934	542.9099
454.602	449.8189	442.5203	511.5939	428.4709	433.6274	348.8484	397.7487	433.0254
40.25789	51.79074	61.85543	83.0366	33.64726	56.14583	33.41545	41.64842	64.79446
1.122739	0.896596	1.220131	1.490437	0.630113	0.988261	0.602187	0.57983	0.964711
1091.564	1044.975	1101.718	1258.318	975.8018	1031.103	836.8793	903.1376	1073.456
103.1488	74.07386	69.43723	43.73872	78.99367	119.4837	59.54343	90.02755	56.75799
90.40835	130.4402	71.80375	45.962	87.63079	136.0297	64.24695	131.7355	60.68493
96.28857	63.59823	43.59596	37.74014	46.34655	54.23587	46.38909	57.74105	34.14155
705.1361	370.6883	322.8283	226.0048	355.5015	470.4009	298.4925	357.686	248.3105
580.4265	322.9365	300.0289	211.7672	343.9853	437.0976	277.2491	311.1295	231.8265
46.11888	70.72378	42.79942	35.23896	52.77041	56.59456	43.7117	64.29752	42.6621
137.2051	129.8552	123.8672	133.2684	122.3592	130.6083	113.0395	127.6033	121.7352
87.95826	114.5938	93.73737	107.658	104.3652	90.68649	100.1694	111.5152	112.0548
1846.691	1276.91	1068.098	841.3781	1191.953	1495.137	1002.842	1251.736	908.1735
0.072322	0.160481	0.117529	0.025957	0.121482	0.095116	0.097396	0.084927	0.049866
5.68046	8.532073	5.501279	2.773103	8.500134	5.877826	5.461735	5.141904	4.449753
41.1954	63.00608	36.52941	23.70679	57.94126	43.96003	43.09348	45.58962	30.0212
26.64368	38.79541	22.89821	14.98242	40.06142	30.35603	25.32347	25.98764	19.01004
0.483908	0.698366	0.56624	0.54767	0.677944	0.705159	0.500659	0.494611	0.60882
0.869195	1.948521	0.947417	0.543356	1.937463	1.6399	0.950235	1.11204	0.624594
0.146115	0.557866	0.150744	0.074157	0.46478	0.340887	0.191258	0.274116	0.087901
0.341379	0.67819	0.530563	0.254541	0.542884	0.504585	0.439408	0.500396	0.213888
2.806897	7.003106	2.499744	1.411957	5.909479	4.733292	2.972966	4.970581	1.447378
1.728506	3.950034	1.649923	0.931398	3.962884	2.729794	1.912818	2.91471	1.117908
3.767816	5.62971	3.719693	2.777896	5.226969	3.433604	3.469267	3.524351	2.729894
1.874483	3.755571	2.884143	2.217284	2.927103	2.2007	3.110962	2.322868	2.271435
10.93793	24.67252	12.46419	8.352863	17.52657	11.92655	15.09966	13.65241	8.067562
67.58621	82.62255	64.56522	46.28229	77.14286	70.51593	72.96839	71.04326	51.49399
45.81609	73.92032	44.76982	24.51931	67.19359	52.59463	52.46268	57.8937	29.38516
13.27586	25.88791	16.42788	15.01358	21.58318	17.7684	17.08971	17.06996	13.16099
16.01609	32.11074	17.34399	8.496671	30.83311	20.14516	18.55683	25.3424	12.61145
8.418391	11.63133	8.245013	12.10866	13.33298	11.90631	11.08568	7.366873	9.962968
1.092644	2.406968	0.967442	0.409134	2.131883	1.631805	1.090652	1.713226	0.696848
0.481379	1.303876	0.721841	0.717124	0.911055	0.717976	0.673033	0.735575	0.538092
1.052874	3.444429	1.551637	1.096538	2.72283	1.442698	2.101654	1.958863	1.074657
0.200368	0.610614	0.327545	0.296724	0.485928	0.22034	0.348379	0.339753	0.216483
0.064023	0.119084	0.066476	0.046977	0.120232	0.082344	0.051204	0.086062	0.05643
0.726667	2.596084	1.286701	0.961598	1.955728	0.996127	1.570733	1.43555	0.894785
0.078253	0.221883	0.124642	0.203944	0.127658	0.070741	0.103618	0.081456	0.097086
3.126437	7.632681	3.257033	1.498961	6.89239	5.396627	3.84694	5.484549	1.632339
1.80069	4.056989	1.780435	0.923249	4.21522	3.085072	2.034351	3.26403	0.875194
0.033195	0.119109	0.053425	0.035856	0.137583	0.114813	0.059944	0.082635	0.020994
0.047425	0.092783	0.028496	0.023489	0.105356	0.096262	0.023726	0.027545	0.027553
0.334253	1.060554	0.445166	0.27755	0.930761	0.662211	0.509375	0.681508	0.272989
2.790805	4.650101	2.999233	2.203862	3.765821	2.86471	2.682448	2.84796	2.174247

37.35632	64.68332	35.47059	19.37816	57.84513	45.82636	45.00605	49.79481	24.72424
0.126851	0.209364	0.167386	0.148338	0.167335	0.183238	0.183535	0.135412	0.171884
4.802299	11.19379	5.961637	5.241811	8.634713	6.606371	6.553598	6.543634	4.177527
0.476782	0.603079	0.452302	0.489667	0.648385	0.662211	0.555615	0.498171	0.564297
0.062828	0.087752	0.087836	0.093955	0.102881	0.112497	0.079917	0.077051	0.077419
0.585747	0.751114	0.584194	0.438855	0.729373	0.778239	0.53189	0.541557	0.465074
1.739081	4.951519	3.153453	2.487883	3.943658	2.365522	2.303564	2.712237	1.928735
0.403678	0.930263	0.268849	0.196562	0.878852	0.497614	0.313517	0.442991	0.268919
4.586207	17.21729	7.232225	5.574967	13.97944	5.814866	10.34728	9.046724	5.541201
331.0898	563.703	333.706	229.6854	511.6763	391.8316	387.3447	404.7838	255.0799
0.073494	0.134131	0.073588	0.059321	0.133858	0.112475	0.078658	0.07803	0.051341
0.047425	0.12414	0.078353	0.060567	0.09173	0.061477	0.092409	0.072289	0.102352
7.135632	9.424173	6.764962	9.973103	12.10254	10.02873	9.257835	5.958467	8.986007
0.061655	0.147962	0.056992	0.089017	0.104131	0.069594	0.069918	0.074603	0.065614
0.716092	1.075625	1.027519	0.85494	1.235728	1.10406	0.885353	0.771174	0.714403
0.067586	0.18051	0.090483	0.060567	0.15616	0.090461	0.118604	0.084905	0.062892
0.457701	0.941931	0.414322	0.252144	1.094179	0.830181	0.50308	0.859506	0.276806
9.183908	29.19379	12.92455	8.616511	21.7466	11.98051	16.9033	17.22571	8.176961
0.164805	0.393545	0.166189	0.196538	0.333324	0.306259	0.244035	0.336193	0.234878
2.09954	4.640378	2.016829	0.954168	4.320961	3.307683	2.182999	3.455377	1.46824
0.48023	1.13688	0.409488	0.384447	1.068224	0.714379	0.456839	0.604079	0.373993
0.972184	1.806563	0.883197	0.418961	1.970628	1.563223	0.794082	1.445785	0.754601
115.4617	108.9632	131.0642	129.5623	127.6186	118.3752	148.2153	140.5196	120.9868
5.320432	10.04053	11.50275	8.054615	10.13304	10.19746	7.35747	12.01708	6.854884
0.35558	0.434842	0.497798	0.435528	0.288624	0.441749	0.464899	0.365552	0.420027
424.9455	464.2713	544.5214	537.9999	491.219	450.5165	553.0544	548.6289	474.8988
0.485187	0.808579	0.942569	0.828582	0.750423	0.689535	0.918412	0.498363	0.782481
5.486641	2.748947	3.581651	4.663559	4.025135	3.870804	2.786003	3.606406	3.0995
2.498428	3.999474	3.702752	3.680495	2.190033	3.171791	4.738627	4.381495	4.355657
1.301198	2.325789	2.766972	2.711132	1.697616	1.760226	2.178896	2.671174	1.823716
1.457328	3.031579	3.598165	4.005899	2.418202	2.300141	3.100942	3.384342	3.212358
10.7222	17.21053	18.86239	21.49382	14.06652	11.17236	16.19758	15.93523	13.48078
2.636346	7.45579	5.719266	5.420552	4.489274	4.353174	4.690175	8.237722	6.401817
86.92338	84.63158	98.49541	97.45005	88.94691	83.25529	97.34051	93.20285	90.48251
86.85265	92.46316	117.9817	111.7507	103.0856	93.93512	119.5559	113.5089	96.04362
0.054707	0.057821	0.08989	0.050335	0.053298	0.051504	0.06621	0.08368	0.074224
49.40275	57.80526	73.72477	75.16841	58.38787	58.00282	64.02961	74.04982	58.80055
0.130403	0.199579	0.156239	0.17589	0.131733	0.158014	0.183731	0.344626	0.119826
55.85658	72.09474	71.83486	72.54805	72.93608	58.78138	81.23015	75.82206	67.96002
53.53534	55.9408	57.40511	52.79934	58.55422	58.45995	55.50487	57.08241	51.58471
44.29748	46.01389	47.00365	42.47269	51.67153	51.4522	46.60325	48.9398	39.32773
56.12415	55.40803	56.74818	53.9753	57.85796	53.00258	52.48449	52.9585	50.63811
59.47634	61.67079	59.40876	56.4952	59.69562	56.84755	59.20591	59.0076	55.45893
80.47449	80.99185	81.68978	80.18227	80.29803	72.45478	75.76485	74.8194	75.48387
84.11432	83.98188	86.34307	81.41751	85.16043	80.23773	82.41182	79.36412	80.64625
49.88445	52.61371	50.62774	48.9849	52.74445	47.50388	49.86824	49.66569	46.90052
66.25814	71.32588	68.67153	68.69942	70.67597	64.50646	65.9805	68.58095	63.65628
62.67363	59.20266	61.27007	56.13945	62.80025	55.90698	59.36544	57.21917	54.7563
67.15427	67.41166	69.78832	64.63794	70.08244	65.54005	64.89572	65.5827	62.46571

134.3085	122.2108	136.9708	128.2679	131.6043	126.8217	129.0044	123.4015	125.595
42.18439	41.27333	42.99635	39.37963	45.31389	44.77519	40.72201	43.76388	40.34264
11.40627	13.254	15.03285	13.96322	13.25174	12.1447	13.07061	13.97078	14.238
80.76214	80.89399	82.9708	75.58715	84.16741	79.21447	81.1675	79.62712	75.41556
77.92993	80.39384	77.35402	71.82213	84.3272	74.80103	76.50931	76.09234	71.41448
38.45605	40.42525	34.08394	33.54927	34.64173	33.70543	36.91462	35.737	35.11195
35.31408	40.38176	44.04745	46.66264	41.19341	40.2584	40.24343	40.18703	40.1865
78.01844	89.13561	85.86131	77.48449	89.36081	91.05943	82.6777	86.22326	79.87531
10.81217	12.71036	14.61679	14.32885	12.4071	11.31783	12.23043	12.37171	14.04283
12.09219	17.33132	16.4781	18.31128	15.52315	14.45995	16.63338	18.79953	16.40445
23.62016	28.99789	26.09124	27.21493	26.54914	23.54522	28.74682	29.60374	24.30903
59.22188	59.36575	59.96715	55.8924	63.15409	56.83721	55.44106	56.98773	55.49797
73.72588	75.47931	75.45985	69.53939	76.31452	73.05426	71.86174	72.76797	70.35077
76.22618	74.23981	70.92701	64.43041	80.40076	68.9199	77.59409	78.22794	66.15451
9.055317	10.19764	9.788321	10.98875	10.25098	11.24548	10.50328	10.25821	8.50084
42.33927	48.7756	43.42336	43.14466	46.30691	40.04134	46.11403	46.85681	40.33288
66.9662	75.29447	67.34672	66.8515	70.80152	62.71835	68.51167	66.17183	61.54839
1496.432	1544.922	1542.372	1463.223	1575.11	1470.832	1500.031	1504.269	1420.24
33.55501	36.22833	34.56569	36.39528	34.68738	35.91731	35.61713	34.60082	32.99431
12.19176	11.56871	10.69161	10.30689	11.93912	10.97674	9.386588	9.824781	9.311792
0.803971	0.820356	0.955401	1.187812	0.792365	0.867287	0.972479	0.64678	0.880239
70.74985	69.8798	68.60584	65.46802	73.94039	64.48579	71.14919	71.38983	61.58742
147.6804	152.0182	148.3441	140.6322	156.001	148.7743	148.297	151.0315	129.7269
30.37984	33.52099	33.52555	27.27422	34.64172	36.52713	31.17164	34.56926	24.9531
8.18E-05	7.7E-05	0.000144	2.08E-05	4.27E-05	3.96E-05	4.3E-05	1.69E-05	2.86E-05
0.000554	0.000427	0.000926	0.000129	0.000307	0.000477	0.000405	0.000145	0.000187
0.007767	0.00548	0.006918	0.001992	0.004546	0.005304	0.00584	0.003605	0.002582
0.013512	0.010031	0.014585	0.005106	0.009187	0.008035	0.011399	0.006927	0.007134
0.008245	0.010175	0.008629	0.000979	0.004509	0.007155	0.008174	0.003086	0.002147
0.00128	0.000972	0.001466	0.000391	0.000794	0.000955	0.001295	0.00054	0.000524
0.020609	0.014993	0.01686	0.004597	0.012781	0.01557	0.016716	0.01001	0.006961
0.024165	0.01508	0.015057	0.005489	0.015418	0.019394	0.014907	0.012496	0.008379
0.00088	0.000653	0.000841	0.000282	0.0006	0.000644	0.000766	0.000463	0.00035
0.040115	0.025048	0.02828	0.009938	0.022414	0.029157	0.028367	0.019684	0.013378
0.032582	0.019139	0.019191	0.009569	0.021655	0.025629	0.019346	0.019269	0.011988
0.005508	0.003471	0.005546	0.00271	0.003473	0.003685	0.004436	0.003908	0.003272
0.007523	0.004201	0.005381	0.003264	0.00434	0.004447	0.004511	0.005015	0.003405
0.002425	0.002297	0.002976	0.002123	0.001912	0.00189	0.002754	0.002981	0.00209
0.051752	0.027752	0.029482	0.015635	0.028332	0.03275	0.026944	0.023095	0.018977
0.01674	0.010827	0.012868	0.007516	0.010168	0.009664	0.012221	0.011746	0.008328
0.134187	0.056118	0.048097	0.035322	0.060863	0.076144	0.045812	0.046221	0.034495
0.04625	0.028178	0.033395	0.020173	0.026466	0.02915	0.031666	0.027827	0.021599
0.123089	0.052261	0.051936	0.031825	0.052931	0.067603	0.050883	0.045372	0.03473
0.10277	0.042512	0.041749	0.02628	0.044522	0.057972	0.042041	0.03886	0.029726
0.08034	0.034006	0.032874	0.022531	0.036927	0.047401	0.032763	0.031871	0.024301
0.046579	0.021391	0.023938	0.011879	0.024013	0.029755	0.021241	0.017588	0.014863
0.014169	0.007684	0.007636	0.004786	0.008531	0.007516	0.007561	0.007151	0.005487
0.113555	0.037833	0.032531	0.026403	0.04879	0.063977	0.031101	0.03468	0.027579
0.021421	0.010953	0.012481	0.008651	0.011481	0.014322	0.011332	0.010754	0.009819

0.05666	0.027074	0.025852	0.020197	0.02997	0.037205	0.025055	0.025985	0.022558
0.002567	0.002027	0.001893	0.002003	0.001767	0.002165	0.001472	0.002298	0.00167
0.000759	0.00057	0.00038	0.000399	0.000608	0.000823	0.000348	0.000454	0.00037
0.000613	0.000422	0.000441	0.00031	0.000422	0.000557	0.000412	0.000473	0.000351
0.002168	0.001053	0.000521	0.00039	0.001572	0.002441	0.0004	0.000669	0.000424
0.017842	0.010677	0.007642	0.006335	0.011538	0.012404	0.007297	0.009507	0.007745
0.016037	0.010507	0.007973	0.010306	0.00941	0.012936	0.007358	0.009761	0.007902
1.109143	0.553434	0.538972	0.340791	0.571911	0.698225	0.510159	0.480678	0.373739
0.013497	0.006599	0.00423	0.003843	0.007919	0.010696	0.003187	0.004548	0.004591
0.007846	0.00436	0.002213	0.00213	0.005508	0.006251	0.002038	0.003964	0.001858
0.00062	0.000329	0.00028	0.000261	0.00041	0.000513	0.000287	0.000371	0.000273
0.006162	0.00464	0.002782	0.003413	0.00389	0.005397	0.002399	0.003662	0.003212
0.011223	0.008299	0.005089	0.00478	0.007053	0.008009	0.005169	0.006716	0.005343
0.00015	0.00012	9.9E-05	0.000116	0.000132	0.000147	8.66E-05	0.000125	0.000102
0.002656	0.001824	0.001241	0.001018	0.001793	0.002334	0.000801	0.001172	0.000754
0.000586	0.000432	0.000406	0.00029	0.000392	0.000513	0.000443	0.000513	0.000335
0.013348	0.008381	0.006814	0.007715	0.008225	0.009441	0.005051	0.006847	0.006283
0.002259	0.00156	0.001226	0.001699	0.001581	0.001513	0.001026	0.001184	0.001198
7.29E-05	4.67E-05	3.92E-05	1.93E-05	5.85E-05	6.94E-05	3.1E-05	4.06E-05	3.07E-05
0.000108	0.000142	0.000144	0.000129	9.66E-05	0.000105	0.000146	0.000147	0.000133
0.002249	0.001844	0.001122	0.001751	0.001477	0.001602	0.00102	0.001359	0.001387
0.003032	0.001997	0.002133	0.002099	0.001958	0.002744	0.001654	0.002197	0.001815
0.032589	0.01897	0.012665	0.013997	0.021127	0.021726	0.011951	0.015374	0.013075

31 (JAK2A - JAK2A-Veh	35 (JAK2A - JAK2A-Veh	8 (JAK2A - JAK2A-GH	1 (JAK2A - JAK2A-GH	9 (JAK2A - JAK2A-GH	14 (JAK2A - JAK2A-GH	18 (JAK2A - JAK2A-GH	27 (JAK2A - JAK2A-GH	22 (JAK2A - JAK2A-GH
15.69296	21.8812	28.56765	24.83271	28.4713	30.04088	26.56941	23.21404	25.96502
5.656056	7.765338	9.327527	7.730855	8.605565	8.893948	9.232941	6.072983	7.118273
408.5493	528.5761	497.5894	524.3123	596.9739	509.9158	543.6706	512.8421	479.1068
357.2113	452.5631	472.9549	406.8401	476.2957	473.4108	455.4353	410.6667	415.735
29.04085	51.78845	42.17263	41.27881	70.8887	44.0513	55.10118	51.50877	34.60662
0.640648	0.982018	1.039549	0.774572	0.920348	0.796329	0.669882	1.006175	0.870726
816.7911	1063.556	1051.652	1005.769	1182.155	1067.109	1090.679	1005.311	963.4025
68.28528	52.9193	46.83359	48.01619	45.9314	61.00631	53.93802	46.50784	62.85284
125.22	71.84908	63.20995	68.3864	40.26086	72.01932	52.77521	69.71589	98.8793
56.15782	36.63602	26.23017	36	27.04902	44.40467	39.41761	25.57472	50.44498
419.6055	306.9082	267.3406	257.0804	226.5568	260.6414	304.1613	230.1542	401.4698
417.7238	286.6417	269.0202	237.8467	228.9416	241.8999	279.4884	214.835	332.0228
49.35357	30.29735	28.14495	25.07178	33.42441	42.12961	37.85342	32.21149	45.41834
116.5402	105.5368	148.0871	115.4992	143.5124	151.1391	168.6375	132.7354	169.2523
91.59332	78.26321	89.58009	89.46573	110.1251	99.35865	111.3232	110.0777	95.37388
1344.48	969.0517	938.4467	877.3664	855.8016	972.599	1047.595	861.8122	1255.714
0.11333	0.06239	0.125199	0.160392	0.030286	0.076062	0.038512	0.031961	0.141698
5.879221	4.378497	5.500717	5.942899	3.286073	4.446206	3.663356	3.666896	7.568895
50.02597	29.75443	45.78766	50.12592	25.94981	33.58227	22.61144	28.02202	59.99128
36.18701	18.83348	27.96844	28.72621	14.35257	19.42163	12.44727	16.30778	28.30814
0.659455	0.426414	0.443673	0.596662	0.367001	0.591135	0.552106	0.451177	0.588401
1.773584	0.898351	1.033773	1.368843	0.51606	0.937837	0.641936	0.645423	1.542297
0.39787	0.20186	0.190433	0.278038	0.116469	0.165832	0.103859	0.100939	0.452093
0.395766	0.30964	0.550846	0.613001	0.299247	0.382968	0.296417	0.28245	0.713721
4.962857	2.526817	3.460545	4.493411	1.486525	2.458831	1.70225	1.68702	6.030523
3.81974	1.628467	2.498565	2.634641	0.85325	1.763009	0.760729	1.009388	2.870058
3.892208	2.529017	4.441894	5.357833	2.660477	3.396911	2.391703	2.792292	5.206395
2.257247	1.958998	3.150646	3.87145	2.122509	2.420148	1.725556	2.106731	3.411628
11.66961	7.644227	17.77532	21.61318	8.618319	11.59302	7.111754	8.394219	21.98198
72.14026	55.17654	78.81779	84.09663	46.68256	67.01948	41.61157	55.94494	83.40698
55.05195	33.6909	54.3099	60.61493	25.11418	35.56481	17.43206	31.34205	60.56686
17.91351	12.77043	21.04993	21.88463	11.77792	15.87723	12.99711	13.68149	22.26977
28.35584	11.52572	20.17963	21.03865	7.267754	13.27092	5.315148	11.30048	18.79797
10.47273	8.92413	12.72138	10.40469	7.52522	11.90007	14.03796	9.276256	9.536337
1.902623	0.897251	1.32792	1.371479	0.535257	0.832908	0.367693	0.646662	1.264448
0.718597	0.478754	0.853773	0.912914	0.489184	0.67092	0.427203	0.5151	0.885349
1.790649	1.037996	2.016671	2.473353	1.051317	1.230866	0.521106	0.88947	2.190087
0.359299	0.150839	0.435409	0.357365	0.251593	0.26184	0.101529	0.237655	0.412849
0.115738	0.052164	0.075925	0.055713	0.016304	0.049878	0.017507	0.037065	0.078253
1.346494	0.679316	1.679397	1.767584	0.785044	0.922606	0.410685	0.673421	1.373547
0.075951	0.056716	0.151825	0.152223	0.126949	0.108459	0.056003	0.095835	0.124116
5.383636	2.85449	4.033859	5.357833	1.761154	3.065682	1.969931	1.953861	6.731686
3.896883	1.843983	2.469125	2.941142	1.035508	1.441209	0.854632	1.18307	2.943314
0.133831	0.057859	0.063943	0.053025	0.025634	0.061725	0.053695	0.024278	0.090419
0.090444	0.038573	0.047492	0.044855	0.023307	0.042407	0.021951	0.034315	0.055334
0.804156	0.506903	0.692626	0.819619	0.330866	0.423828	0.236003	0.254205	0.692791
3.165195	1.788564	3.563845	4.042753	2.006876	2.792478	1.860189	1.9883	3.906105

51.19481	28.06109	46.27834	52.55051	20.38269	32.68771	15.31414	21.42161	52.61337
0.150709	0.107736	0.145162	0.212047	0.122296	0.168322	0.121373	0.118778	0.178116
5.245714	3.940867	7.16901	7.742899	4.008783	5.362525	3.559271	4.11287	7.806977
0.555896	0.332291	0.496872	0.391625	0.375132	0.503855	0.486713	0.388493	0.527703
0.059073	0.040838	0.051934	0.09817	0.065225	0.06743	0.066524	0.065187	0.068808
0.725844	0.562541	0.617991	0.664656	0.343513	0.518845	0.515902	0.472732	0.56407
2.73974	1.533244	3.509613	3.336457	1.928733	1.988583	0.873413	2.257619	2.90407
0.94161	0.380012	0.609986	0.449341	0.202675	0.293029	0.112028	0.181462	0.333314
9.605455	4.151985	9.906456	11.1347	5.054454	6.116857	1.927618	4.080661	8.997384
430.3559	262.4601	419.1828	456.336	217.3367	308.4298	193.7151	246.5641	460.666
0.096452	0.093002	0.114534	0.114141	0.052396	0.102246	0.045526	0.047273	0.109282
0.059073	0.065798	0.085248	0.118252	0.085031	0.076062	0.085192	0.06645	0.122808
8.467013	7.521075	10.61148	8.380674	5.630364	9.45816	12.38165	7.977977	8.879651
0.08079	0.056716	0.071923	0.061168	0.05592	0.076086	0.087545	0.043458	0.056669
1.021091	0.798509	0.99891	0.996457	0.626725	0.844271	0.855311	0.753944	0.879855
0.125369	0.076002	0.109214	0.084255	0.052419	0.107226	0.04668	0.085677	0.129532
1.098234	0.379352	0.558077	0.477013	0.23059	0.408838	0.170361	0.240206	0.587616
14.97273	7.439707	15.67059	20.61435	8.789962	9.794224	3.491389	6.481487	17.32762
0.330312	0.225632	0.290273	0.347877	0.166562	0.256763	0.164546	0.248011	0.33593
4.156364	1.738644	2.732281	2.783016	1.024893	1.711995	0.634695	1.195953	2.547471
1.050078	0.451265	0.632712	0.4894	0.210806	0.362901	0.169184	0.274769	0.619273
1.92787	0.820061	1.104017	1.11716	0.462309	0.750705	0.267228	0.472732	0.943169
150.6992	139.7682	148.2618	107.1031	139.1146	129.833	128.7087	126.2737	119.0415
9.596339	11.30979	9.091178	10.69624	9.044049	8.887265	5.81068	8.232617	9.258986
0.370323	0.443652	0.379465	0.312868	0.336574	0.393445	0.424485	0.425506	0.349862
513.1169	538.6677	569.6796	460.5636	536.0965	510.4915	468.1195	474.6142	499.8829
1.781989	1.414215	1.183472	0.586341	0.957264	0.859603	0.538951	0.603146	0.756866
4.039292	5.06047	3.759818	5.105423	4.593103	3.372651	2.319029	3.437651	3.010138
2.822453	4.302679	3.026295	2.692526	3.34772	3.568059	2.596893	2.990247	2.82765
1.589359	1.871843	1.541833	1.345911	1.807008	2.096868	1.656524	1.789428	1.939171
1.758267	2.537124	2.430051	2.314411	2.506785	2.222756	2.132039	2.227583	2.665438
13.82453	14.08704	14.38976	14.38241	16.49833	13.62589	11.89573	12.42538	15.78065
4.269921	4.403062	5.036312	3.784661	4.969522	5.03737	5.744272	3.930362	2.881106
98.687	98.25697	111.2578	86.5618	105.1568	102.7766	93.00583	92.55794	95.24424
110.46	115.9913	113.6756	101.5105	112.9655	104.7871	95.53981	109.1138	103.2811
0.067959	0.068004	0.06657	0.072563	0.059887	0.062981	0.036944	0.060371	0.053235
52.73704	64.48114	72.71713	59.79482	66.27364	61.66597	56.09709	62.2968	65.69585
0.164251	0.17258	0.166969	0.21403	0.0897	0.185035	0.115375	0.111209	0.193917
60.24893	74.49973	82.6955	64.08598	68.37597	71.11691	61.49709	48.13844	76.90323
57.63021	52.83306	52.06735	52.07489	54.77267	55.2536	51.09282	59.77919	52.57799
52.27929	45.59806	45.82722	45.32426	49.44015	50.16515	43.35737	50.18528	48.19305
54.5448	50.41167	48.51007	50.47149	56.24184	53.52924	52.05336	58.71701	51.50244
57.30656	53.21232	58.29754	56.17021	60.76904	59.18895	55.39483	64.78173	56.81816
76.28289	68.7812	74.31521	77.12681	83.6445	81.58448	76.05677	91.5533	81.66964
79.12017	73.62399	82.3141	79.49617	87.51874	82.3779	79.79676	93.33503	81.3387
50.11088	44.7423	50.87497	48.70468	53.3688	50.39788	49.89725	55.14213	49.40305
65.61343	60.71961	65.85923	66.68936	71.90206	67.65207	68.22935	77.5736	67.13933
57.63021	51.79255	52.83246	59.31575	61.79202	58.55422	55.60942	64.21066	56.7044
65.80761	61.59481	60.70218	64.01362	69.89964	66.56244	64.56089	73.05076	64.59523

130.5364	118.6386	108.2087	128.4766	138.9722	125.0426	124.5643	151.4467	121.2066
44.32844	39.88006	37.88794	43.14894	44.61911	42.17808	40.44508	46.86168	40.49871
13.38807	12.64182	11.15871	12.92936	12.87424	12.22921	12.26228	13.8769	12.19305
81.15913	73.01135	74.93127	75.13532	79.8029	78.26271	76.71076	85.64848	76.52973
78.19239	68.39222	70.53933	71.97957	75.93954	76.96151	71.8365	81.50254	71.68974
33.70213	29.35819	36.78499	32.52766	38.30713	37.02615	36.50071	40.24873	33.94197
37.87714	40.08428	33.76428	39.12511	44.89117	37.10021	40.32245	44.10914	37.40649
85.71172	75.94814	76.33232	79.16936	81.93591	77.59624	78.19245	89.34899	73.72709
11.2736	13.72123	10.78112	11.62213	13.2769	11.19248	12.68124	15.35025	10.18052
15.25442	14.73258	10.84074	12.45957	13.35308	13.55157	13.41697	14.71066	14.12698
25.43842	22.12318	19.05824	21.2834	22.52721	23.74963	21.89838	25.00127	24.04481
60.44591	54.94327	55.26691	55.75149	59.65901	60.29974	56.40647	65.14721	55.90807
76.02397	67.01135	69.18797	68.22128	74.93833	72.77226	72.38831	79.96066	71.19334
75.99161	63.71475	70.05244	65.72936	70.25877	73.22715	67.99432	78.15609	70.30394
10.20557	9.41329	9.152526	9.036255	8.817171	9.624684	10.24922	10.44137	10.12881
44.79233	38.63533	38.68286	38.57362	41.43047	42.83397	39.11666	43.66371	41.87417
64.63171	59.67909	66.03809	65.86213	72.57678	70.34969	67.34034	75.28934	71.51393
1505.279	1365.238	1390.269	1430.418	1543.529	1489.264	1438.375	1649.092	1446.41
33.91789	31.65316	43.55175	32.5583	35.4341	36.08463	35.26426	40.77411	35.40017
9.440695	9.080713	8.634833	10.0606	8.695284	10.25307	9.745444	12.40355	11.87245
0.737261	1.539384	0.828407	0.911694	1.0948	1.204937	1.087255	0.90948	0.865096
70.18759	61.4295	64.52774	63.08426	67.85369	69.02733	63.33466	70.68655	65.43292
147.8022	136.27	146.5872	139.2957	145.0839	150.4859	139.0859	157.2331	147.6781
33.51873	32.56726	29.04444	32.68085	32.00605	33.91596	29.65427	32.45939	34.10744
4.44E-05	3.76E-05	8.06E-05	7.98E-05	2.33E-05	3.31E-05	4.15E-05	2.46E-05	0.000107
0.000303	0.00044	0.000603	0.000699	0.000156	0.000327	0.000417	9.32E-05	0.000656
0.005042	0.004534	0.006155	0.006587	0.002376	0.003764	0.005215	0.001998	0.006415
0.008298	0.009164	0.013411	0.010991	0.005685	0.009243	0.012007	0.004739	0.013422
0.006426	0.005732	0.006936	0.007162	0.001276	0.003348	0.006001	0.001423	0.009107
0.000933	0.000929	0.001426	0.001364	0.000432	0.000689	0.00119	0.000352	0.001386
0.015613	0.013105	0.015395	0.015712	0.005909	0.009891	0.013082	0.0057	0.016543
0.02022	0.015421	0.014985	0.014104	0.00624	0.011212	0.013117	0.007167	0.014591
0.000655	0.000614	0.000783	0.000732	0.000297	0.000487	0.000662	0.000261	0.000785
0.029838	0.023876	0.027745	0.027027	0.010534	0.01806	0.024197	0.011846	0.030711
0.027041	0.02118	0.020321	0.018397	0.009725	0.015179	0.016446	0.0122	0.019091
0.003429	0.004088	0.005036	0.004287	0.00318	0.003679	0.004431	0.002628	0.004206
0.004511	0.004595	0.005065	0.004413	0.003409	0.003847	0.004414	0.002704	0.004394
0.001689	0.002482	0.002762	0.002832	0.002131	0.002195	0.002663	0.001773	0.001935
0.033103	0.026677	0.028155	0.026941	0.017523	0.023353	0.024913	0.016013	0.029261
0.010228	0.010895	0.01237	0.012758	0.007078	0.008883	0.010193	0.006934	0.012025
0.078982	0.053566	0.046661	0.044647	0.033964	0.042769	0.042093	0.034676	0.049092
0.026214	0.028688	0.032847	0.032684	0.020705	0.024782	0.028923	0.020047	0.031051
0.067053	0.05031	0.049602	0.048598	0.032411	0.041473	0.044747	0.033467	0.052488
0.05986	0.043885	0.042249	0.041675	0.026356	0.034919	0.036421	0.028329	0.043309
0.049767	0.037628	0.034122	0.031173	0.021723	0.029091	0.029493	0.023831	0.032561
0.03141	0.023483	0.023392	0.021749	0.012497	0.018702	0.021161	0.011375	0.023096
0.00968	0.007757	0.008238	0.007822	0.004745	0.005493	0.006564	0.004514	0.007293
0.071395	0.042322	0.032573	0.029008	0.025559	0.030922	0.028841	0.026522	0.032525
0.015295	0.013765	0.013352	0.012715	0.007233	0.009621	0.011379	0.008323	0.01082

0.039044	0.029746	0.026802	0.023908	0.020247	0.024038	0.023762	0.022046	0.024659
0.001756	0.002315	0.002119	0.001669	0.001833	0.002056	0.00206	0.001641	0.001596
0.000872	0.000633	0.000459	0.000315	0.000336	0.000474	0.000404	0.000299	0.000322
0.000547	0.000604	0.000371	0.000357	0.000328	0.0004	0.000332	0.000338	0.000311
0.002754	0.001495	0.000765	0.000326	0.000336	0.000679	0.000437	0.000246	0.000502
0.0139	0.011549	0.010697	0.00666	0.006466	0.009807	0.006429	0.006033	0.007376
0.010554	0.011966	0.009949	0.007272	0.007982	0.009885	0.009618	0.009143	0.00817
0.723358	0.568488	0.548473	0.498676	0.335744	0.448274	0.470556	0.341203	0.528024
0.012355	0.0096	0.006526	0.002564	0.002728	0.005443	0.003755	0.002958	0.003381
0.007797	0.004949	0.003581	0.002256	0.002073	0.002913	0.001943	0.001669	0.002872
0.00058	0.000493	0.000336	0.000244	0.000195	0.000314	0.000219	0.000197	0.000206
0.005628	0.005101	0.004271	0.002431	0.002573	0.003724	0.002911	0.002519	0.002986
0.008609	0.007533	0.006884	0.005232	0.004691	0.006566	0.00443	0.004276	0.00572
0.000147	0.00018	0.000132	7.88E-05	0.000109	0.000109	0.000115	8.36E-05	7.69E-05
0.001949	0.002043	0.001601	0.000852	0.000889	0.001364	0.001324	0.000846	0.001136
0.000479	0.000562	0.000453	0.000383	0.000297	0.000439	0.000321	0.000288	0.00033
0.008372	0.009581	0.009311	0.005121	0.005806	0.008607	0.007792	0.007236	0.006236
0.001439	0.001837	0.001848	0.001114	0.001163	0.001651	0.001392	0.001088	0.00109
8E-05	7.94E-05	5.77E-05	4.48E-05	2.3E-05	3.5E-05	3.27E-05	2.79E-05	3.97E-05
0.000103	0.000164	0.000127	0.000131	0.000122	0.000148	0.000116	0.000105	9.42E-05
0.001765	0.001726	0.001448	0.001067	0.00137	0.001393	0.001306	0.001171	0.000995
0.002224	0.00289	0.002201	0.001651	0.002065	0.001895	0.00237	0.001607	0.001573
0.025374	0.018266	0.014269	0.010844	0.012943	0.014375	0.010874	0.010445	0.011482

23 (JAK2A	30 (JAK2A	34 (JAK2A	Average (C	Average (C	Average (C	Average (C	Average (J	Average (J
JAK2A-GH	JAK2A-GH	JAK2A-GH-Ins						
23.7775	22.40708	22.65351	26.38945	36.37608	28.31796	28.23279	29.72498	18.77412
8.026205	6.581037	7.322811	10.13267	8.434683	9.044724	9.659343	10.07688	6.603131
544.5241	536.4349	527.201	487.4935	496.8112	474.9191	527.3277	531.0347	470.616
450.0371	433.2743	429.3958	423.9341	431.1402	431.8676	446.3545	453.2063	397.8794
52.86527	40.88496	47.97041	46.07039	37.76457	35.4045	40.60675	57.29517	44.13752
0.765093	0.688597	0.900518	0.818908	1.143316	1.002392	0.98116	1.045108	0.753879
1079.995	1040.271	1035.444	994.8389	1011.67	980.5562	1053.162	1082.383	938.764
64.7737	45.91135	47.01268	87.65647	75.1071	87.36085	93.013	77.14543	65.50671
89.01382	72.81425	43.77235	88.98636	66.89345	82.68095	80.67164	94.37329	90.74731
33.63316	30.33303	23.76245	68.97303	58.21319	72.22821	76.05607	49.10335	46.21311
281.334	258.5935	224.7634	518.2212	474.5442	579.1316	599.1189	349.0848	326.2005
278.0181	238.2842	252.3229	443.7461	430.6938	463.6431	493.2077	323.1631	304.9141
42.66603	30.66996	18.5846	43.14836	32.41841	38.86901	42.31604	51.62543	46.06445
170.1953	133.836	160.1794	104.4493	117.8833	135.3475	142.9264	127.9917	116.891
115.1977	86.94658	96.48624	92.60986	91.82438	88.89004	104.9609	102.2082	98.71918
1074.832	897.3888	866.884	1447.791	1347.578	1548.151	1632.271	1174.695	1095.256
0.08377	0.070986	0.047547	0.138584	0.111523	0.1797	0.07136	0.104113	0.081582
4.276391	4.816901	2.903969	7.762374	7.233553	8.991008	5.674994	6.236883	5.062222
36.71199	40.82897	18.35032	61.06166	58.86101	69.86727	44.6815	45.02871	39.69694
21.67342	22.37746	11.79104	40.65275	38.26533	47.1722	27.27746	29.4187	25.06833
0.348875	0.608934	0.505198	0.638276	0.662813	0.740851	0.51841	0.639076	0.537992
0.826354	0.821891	0.552676	1.492858	1.077589	1.804578	0.828917	1.403331	1.071761
0.159842	0.158125	0.124802	0.270252	0.206873	0.396298	0.152004	0.317687	0.230601
0.299481	0.397183	0.254443	0.492946	0.420423	0.774822	0.34046	0.502152	0.37182
3.25513	2.699396	1.204225	5.704753	4.325995	7.894106	2.798703	4.311516	3.37612
1.910359	1.682173	0.793982	3.231242	2.654362	4.560537	1.757135	2.644807	2.278729
3.257355	3.62173	1.925608	5.21008	4.862611	7.21168	3.998168	4.157574	3.228947
2.425216	2.58833	1.862919	2.877337	2.86756	3.722546	2.556185	2.79696	2.384302
13.20964	12.50946	4.899872	21.23967	17.45298	30.34714	13.75681	14.98854	11.2267
67.68356	70.21328	30.09987	82.11141	80.24267	90.80866	73.67458	68.22577	64.56449
48.72682	42.73642	15.50397	67.46744	63.25432	74.51042	50.11818	52.59953	45.69688
13.91496	16.52958	10.18694	22.0143	18.10144	28.18918	18.14134	19.33619	15.60092
17.57726	14.87324	4.784635	30.54903	25.45813	33.08716	17.09628	21.78593	19.27845
5.43115	12.64708	10.59257	10.9542	9.443012	13.01634	9.54106	11.44486	9.562475
1.129172	0.914125	0.277029	2.132186	1.728444	2.590061	1.20503	1.509447	1.26012
0.617429	0.58165	0.380512	0.991079	0.851615	1.203262	0.574109	0.874374	0.62881
1.475377	1.618914	0.516031	2.46762	2.169325	3.406464	1.533497	2.051627	1.592764
0.277676	0.245312	0.091521	0.376671	0.363582	0.461031	0.259636	0.38823	0.282951
0.042452	0.064757	0.034479	0.099845	0.096499	0.122842	0.070045	0.087023	0.072319
1.094685	1.29006	0.486069	1.577325	1.398775	1.992159	1.118025	1.559248	1.185375
0.080321	0.102109	0.048722	0.093899	0.078695	0.103788	0.075231	0.149774	0.082965
3.163906	3.015694	1.336056	6.598044	5.115401	9.232576	3.339677	4.935538	3.840391
1.945958	1.3934	0.696492	3.203651	2.524851	4.60729	1.710519	2.812193	2.382888
0.051642	0.058527	0.034479	0.122738	0.07575	0.133717	0.050751	0.092157	0.071053
0.040161	0.029891	0.02021	0.067314	0.057381	0.092382	0.042932	0.069277	0.041568
0.455451	0.46334	0.21872	0.67415	0.524899	0.97294	0.398391	0.675248	0.554986
2.509765	3.172636	1.627836	4.225394	3.903433	5.640118	3.102428	3.296745	2.531683

41.42893	34.91348	12.93419	60.40727	54.75048	69.23927	41.18531	44.64071	39.7562
0.119347	0.125771	0.10936	0.166387	0.144002	0.173702	0.156006	0.175132	0.149855
4.599011	5.169417	3.187452	7.80553	7.150185	9.217911	4.800022	7.527664	5.292268
0.291471	0.485795	0.52548	0.570133	0.607735	0.653423	0.510451	0.571129	0.501254
0.065503	0.090905	0.074881	0.088114	0.070546	0.084163	0.058563	0.096984	0.066859
0.440766	0.605795	0.554059	0.735793	0.807431	0.988863	0.642478	0.656355	0.565381
2.112386	2.065594	0.897234	3.040493	2.800956	3.655817	1.959323	3.380407	2.243504
0.229617	0.416016	0.154533	0.663541	0.652832	0.747991	0.445475	0.554428	0.46941
7.54487	7.675654	2.022868	10.56933	9.097815	13.00426	6.777317	9.963756	7.738528
334.1433	342.3221	158.6519	508.7573	464.0674	599.8347	368.7442	406.1205	348.0049
0.084326	0.098366	0.032082	0.084595	0.07489	0.139488	0.061775	0.102675	0.079496
0.091802	0.084676	0.080827	0.077294	0.083496	0.10127	0.063006	0.083254	0.078384
5.273177	10.57787	9.578489	8.878227	8.140593	11.38267	8.228045	9.658701	8.038079
0.051642	0.082189	0.079652	0.080561	0.079282	0.078866	0.064792	0.093539	0.069528
0.639234	0.89167	0.85114	0.900847	0.996922	1.159426	0.918803	1.059574	0.838106
0.096386	0.07596	0.028533	0.165063	0.127535	0.168734	0.090401	0.115636	0.093554
0.476143	0.488209	0.14619	0.992348	0.762643	1.157657	0.507258	0.706551	0.623396
12.3508	12.06761	3.987196	19.48377	17.31691	25.48035	11.90361	16.89239	12.94368
0.138282	0.224137	0.156907	0.237383	0.226253	0.336431	0.198793	0.279171	0.27421
2.19738	1.725875	0.669065	4.548527	3.511244	5.174518	2.212804	3.048004	2.600325
0.414289	0.550262	0.186592	0.987808	0.905048	1.061132	0.556709	0.742684	0.587251
0.842373	0.775292	0.242458	1.775199	1.369797	1.995699	0.939424	1.328514	1.14848
163.1598	119.4324	151.4446	122.0207	134.9788	123.4222	134.2779	123.1167	140.0378
9.213402	8.182329	11.23337	7.351227	6.843928	7.642159	6.173353	9.98568	9.427112
0.435387	0.363742	0.406126	0.435605	0.405909	0.359117	0.393203	0.419708	0.412891
604.2404	483.7138	537.659	475.5674	498.8727	474.6587	500.2426	497.7056	525.6733
0.877036	0.571247	0.773421	0.911621	0.782153	0.918632	0.946987	0.803937	1.079092
5.481186	3.223909	3.552801	3.606685	3.117813	2.857698	4.447736	3.778019	3.718334
2.051675	1.628981	2.492968	3.46165	3.061484	2.200097	3.235859	3.348909	4.120182
1.725077	1.31052	1.715042	1.946615	1.749113	1.577991	1.538185	2.252347	2.026998
2.247912	2.267775	2.919905	2.598598	2.643662	2.350548	2.32355	3.070797	2.798607
12.47474	13.09958	11.70965	14.99213	14.72516	14.5261	14.48057	16.56112	14.70503
4.597423	6.872557	4.917283	5.299348	3.797391	3.767367	4.210205	5.487611	5.600539
116.7448	97.1289	115.0155	86.38246	92.57093	92.91221	99.72476	90.55585	95.59397
130.2216	101.5634	101.7783	103.4428	104.9858	98.55768	102.122	103.8432	111.1119
0.056227	0.053906	0.050889	0.066935	0.067793	0.045535	0.052162	0.060569	0.072015
80.04897	58.20998	61.98093	59.81195	58.97186	57.21729	58.96312	64.61783	62.81963
0.144765	0.16215	0.237926	0.142115	0.154965	0.14456	0.17166	0.164291	0.197003
74.76031	69.64241	67.43027	63.09692	70.01597	66.15957	67.18138	69.63902	71.95218
55.61511	51.20319	59.67679	52.97249	61.78393	52.42947	51.24863	56.63188	54.92705
47.58205	45.44565	48.97714	42.63705	46.31128	43.16101	40.87033	47.72279	46.54963
52.9693	50.87536	57.54588	53.47607	58.57995	51.75323	52.60551	55.39841	52.20752
60.19481	55.41377	61.77388	56.79678	62.76163	56.56077	56.99637	58.82358	56.83826
81.85006	78.03415	79.71187	76.31542	82.19335	78.94428	80.35675	79.12334	74.22644
83.65643	80.76949	86.69089	81.2984	89.12574	81.73091	81.26975	83.42812	79.03327
49.53719	48.92886	53.58847	48.91242	54.45932	49.15215	49.33093	50.49494	48.25753
67.2928	67.05179	74.07454	66.26106	73.07428	66.7411	66.15334	68.77585	64.91015
61.63991	59.41947	61.34544	56.61588	62.72391	58.41651	56.51969	59.06388	56.15273
67.47344	64.75697	71.51519	64.71065	73.0301	64.82908	64.05451	67.49208	64.06931

138.8784	123.1417	138.0019	123.6208	137.1616	122.6269	127.8123	129.1751	125.4352
43.73554	40.856	45.85406	41.1709	44.61454	40.45622	40.74123	42.74768	41.80741
11.90083	11.89414	13.58597	12.46733	14.44712	11.37343	11.91499	13.5293	13.46186
79.58678	76.74331	82.89132	79.67085	87.36467	78.65864	78.50989	80.56676	78.07613
74.81582	75.65737	77.94175	74.52627	84.79596	73.80005	73.54195	77.73964	74.12015
35.10744	34.42231	37.65738	35.69323	38.5334	36.22981	36.55897	35.28112	34.16478
39.72963	35.21116	44.83934	36.81242	40.35684	32.96585	35.47503	42.50873	39.71567
85.48406	77.6346	88.44973	81.05989	86.28084	75.30291	77.4647	86.58033	82.08722
12.11334	10.50085	15.72816	10.68392	12.42391	9.441219	11.34499	13.07619	12.72796
11.06139	10.75697	13.56342	16.00037	17.2181	12.58456	14.04156	16.42076	16.36487
19.20071	18.65566	21.25274	26.91023	28.02083	23.63779	24.18873	26.47968	26.04424
59.06848	55.75185	64.25431	56.97233	62.75744	57.20023	56.5764	59.04332	56.66319
72.54191	71.15993	77.76135	72.73175	78.83618	70.83193	70.99282	73.96947	71.60316
68.66352	66.00683	73.57845	73.48437	80.74491	72.01892	73.09947	71.78358	72.33658
9.059504	10.28571	10.95446	8.566103	12.14095	9.298713	8.695499	10.49423	9.776239
37.17946	36.50199	41.00595	44.64802	47.48453	41.37485	41.38592	44.33837	43.34628
67.88784	68.07627	74.78484	65.63885	73.85623	68.80815	67.30291	68.60251	64.10854
1493.826	1425.155	1577.005	1460.654	1611.082	1440.329	1449.053	1519.292	1459.011
35.31995	34.21742	38.26621	33.20022	37.66481	35.85658	33.98048	35.5588	33.75666
10.68949	10.67501	9.479737	10.16166	13.74783	10.44718	10.6601	11.09662	9.408914
1.129516	0.936266	1.233448	0.734275	0.714596	0.586191	0.795985	0.924644	0.955228
66.07084	62.28799	69.58722	69.54142	75.68261	68.63024	67.25525	68.47597	67.14871
146.2983	137.9391	152.695	142.2961	158.8714	144.674	140.9478	149.154	142.6255
33.08855	29.82242	34.12841	28.65849	31.06156	29.15376	28.25598	33.09792	31.356
5.65E-05	9.15E-05	4.38E-05	2.88E-05	3.33E-05	8.33E-05	4.12E-05	6.48E-05	3.41E-05
0.000459	0.000518	0.000409	0.000307	0.000331	0.000601	0.000453	0.000453	0.000296
0.004898	0.004813	0.005026	0.006417	0.006466	0.007906	0.006759	0.004848	0.00432
0.008087	0.010737	0.012298	0.010203	0.009783	0.012057	0.011716	0.009389	0.008585
0.005154	0.00442	0.006504	0.00452	0.004488	0.007231	0.005429	0.006289	0.005113
0.000895	0.000934	0.001169	0.000985	0.00098	0.001305	0.001219	0.000915	0.000844
0.012354	0.011745	0.01308	0.015859	0.015769	0.019811	0.017418	0.01296	0.012481
0.012675	0.012953	0.012812	0.018569	0.019342	0.020644	0.019805	0.014088	0.014285
0.000468	0.000583	0.0007	0.000776	0.000723	0.000978	0.000734	0.000604	0.00057
0.022711	0.020453	0.02503	0.032786	0.032849	0.042258	0.035868	0.022967	0.023029
0.017106	0.017989	0.017457	0.02556	0.02633	0.027577	0.028385	0.019037	0.019765
0.00316	0.003996	0.004554	0.004468	0.004588	0.005034	0.004819	0.003777	0.003827
0.003166	0.004439	0.004373	0.005981	0.00634	0.006785	0.006315	0.004327	0.004408
0.002034	0.002247	0.002558	0.002353	0.002281	0.002255	0.002379	0.002239	0.002399
0.023219	0.02596	0.026191	0.037502	0.03938	0.046839	0.044227	0.02679	0.025759
0.008837	0.011274	0.011076	0.015676	0.015389	0.017824	0.01485	0.010209	0.010684
0.042081	0.046643	0.042334	0.093777	0.097767	0.117286	0.115348	0.055309	0.051815
0.026204	0.028829	0.029737	0.037015	0.037584	0.044251	0.043296	0.027473	0.027199
0.044387	0.046413	0.045635	0.084486	0.088593	0.110871	0.11062	0.051311	0.04967
0.037668	0.039988	0.039156	0.068627	0.074285	0.088638	0.095149	0.042607	0.042874
0.030725	0.032881	0.0308	0.053426	0.057257	0.066195	0.075877	0.034748	0.035266
0.018492	0.021969	0.02091	0.030517	0.033461	0.039641	0.041318	0.022195	0.021717
0.005429	0.007415	0.006876	0.0117	0.012233	0.013563	0.012462	0.007231	0.007527
0.029757	0.034058	0.030984	0.072294	0.076709	0.082649	0.095622	0.041907	0.041416
0.010133	0.012693	0.011571	0.015547	0.016327	0.017931	0.02134	0.011578	0.012193

0.023698	0.025948	0.024462	0.038581	0.040798	0.043243	0.052924	0.028059	0.028478
0.001235	0.001798	0.001863	0.001871	0.002083	0.002021	0.002412	0.001971	0.001902
0.000293	0.000479	0.000353	0.000714	0.000724	0.000668	0.00076	0.000556	0.000535
0.000351	0.000386	0.000347	0.000562	0.000553	0.000521	0.000565	0.00043	0.000477
0.000406	0.000685	0.000477	0.001738	0.001778	0.001396	0.001828	0.001195	0.001148
0.008414	0.012059	0.007873	0.012031	0.013776	0.0141	0.015121	0.009719	0.01
0.007518	0.009118	0.009902	0.011274	0.012281	0.012489	0.014505	0.010227	0.009508
0.450801	0.509183	0.490534	0.785919	0.828748	0.951528	0.983699	0.540667	0.531284
0.004169	0.005819	0.004541	0.009553	0.010341	0.008225	0.010946	0.006658	0.006856
0.002583	0.003911	0.002315	0.00565	0.006388	0.00637	0.005714	0.004092	0.004121
0.000273	0.00033	0.000272	0.000444	0.000444	0.000395	0.000543	0.000358	0.000401
0.003009	0.003892	0.003502	0.005458	0.005869	0.005628	0.006929	0.004024	0.004
0.005862	0.008001	0.00553	0.008467	0.00907	0.01054	0.011034	0.006646	0.006674
8.93E-05	0.000131	0.000115	0.000153	0.000147	0.000141	0.000175	0.000123	0.000128
0.000838	0.001094	0.001279	0.001603	0.001922	0.002026	0.001993	0.001642	0.001344
0.000424	0.000389	0.000389	0.000551	0.0005	0.000516	0.000569	0.000407	0.000466
0.0058	0.008068	0.007579	0.008359	0.009931	0.009526	0.011107	0.008115	0.007227
0.001039	0.001813	0.001587	0.001405	0.00167	0.001689	0.001838	0.001516	0.001337
3.75E-05	3.74E-05	3.63E-05	5.69E-05	5.36E-05	5.63E-05	7.04E-05	4.66E-05	5.24E-05
0.000117	0.000125	0.00015	0.000122	0.000109	0.000105	0.00012	0.000123	0.000138
0.001045	0.001725	0.001494	0.001558	0.001674	0.001987	0.002361	0.00156	0.001451
0.001441	0.002005	0.002134	0.002318	0.002553	0.002439	0.002615	0.002186	0.002156
0.012003	0.017325	0.01305	0.024068	0.026795	0.027233	0.028122	0.017697	0.016808

Average (J)	Average (J)	SEM (Cont)	SEM (Cont)	SEM (Cont)	SEM (Cont)	SEM (JAK2)	SEM (JAK2)	SEM (JAK2)
27.69639	23.60343	4.499254	19.17276	1.442731	2.58066	5.304693	1.495423	0.90352
8.758167	7.024262	1.50786	1.955485	0.909691	1.228968	1.146072	0.737638	0.286939
534.4924	520.0218	15.55712	23.03068	24.06849	14.29253	20.36434	27.19777	17.40352
456.9874	427.8218	5.775012	25.8874	18.74679	15.34304	15.04983	20.35129	13.06647
50.69852	45.56721	3.764809	3.041195	3.977185	1.632243	7.982045	6.458768	5.624206
0.840136	0.846222	0.102973	0.439593	0.061447	0.088461	0.146024	0.090173	0.063798
1079.473	1024.885	28.82238	63.67734	44.80456	31.54081	48.32994	54.88263	29.17909
51.1451	53.41168	14.76745	6.502675	13.8455	17.73789	12.2082	6.631499	2.833775
59.33035	74.83912	17.04683	1.593135	17.34355	21.8299	17.22582	15.54278	5.764932
34.62029	32.74967	11.83676	2.567044	14.65658	20.3767	4.491648	4.843886	3.52399
263.1561	279.263	113.6221	26.91168	119.058	175.5624	39.4104	29.08831	12.41308
251.4394	263.0966	79.06291	27.50697	79.34279	125.3869	36.30353	30.98846	9.689554
33.32483	33.91008	5.694674	3.318394	4.963532	6.793278	6.071101	5.518043	3.106335
145.3751	153.2397	5.345781	8.76633	2.20898	15.76233	2.084452	3.755632	8.595804
99.97055	100.8164	3.312547	10.2047	9.222989	7.098334	4.428659	6.375355	4.747023
938.3617	991.3262	234.0337	69.02213	252.3012	371.3791	108.6029	85.45935	34.38069
0.08609	0.075192	0.031667	0.012574	0.050818	0.003486	0.02219	0.011497	0.025029
4.56785	4.646611	0.852452	1.100771	1.725708	0.14616	1.073732	0.289486	0.511706
35.61142	36.78092	5.501265	6.043895	10.52243	1.737982	7.134157	4.155854	5.388367
20.58322	20.09157	4.572143	3.332299	7.827817	0.95819	4.759157	3.16316	3.370562
0.510115	0.500517	0.042829	0.021895	0.06398	0.022731	0.033951	0.042128	0.045119
0.89969	0.877728	0.300694	0.16037	0.464905	0.086901	0.281595	0.192221	0.150524
0.170926	0.19916	0.064937	0.043285	0.125781	0.035485	0.091389	0.051288	0.031099
0.428496	0.389456	0.087369	0.049194	0.181401	0.025002	0.068838	0.05024	0.065282
2.720313	2.975259	1.523777	0.678947	2.361053	0.379864	1.040817	0.695124	0.562089
1.702039	1.653192	0.819737	0.271834	1.357616	0.182245	0.607196	0.483912	0.394615
3.649764	3.360676	0.475591	0.54087	1.363576	0.185369	0.544526	0.257283	0.555442
2.658062	2.478965	0.149029	0.240669	0.616708	0.259454	0.285922	0.192558	0.382618
13.34232	12.19903	3.312374	2.646418	7.433114	1.327387	2.828439	1.481458	2.759119
63.64561	61.46973	3.806887	3.434554	7.719832	2.299089	6.272729	4.631219	8.464829
38.60718	39.77522	4.522305	6.063493	10.41058	3.32214	8.710242	5.88333	8.278344
16.71736	15.31655	2.009552	1.407429	4.77167	1.685258	1.969457	1.088291	2.054458
13.41442	13.46672	4.930718	3.198167	6.033632	1.216213	4.401593	3.34847	3.219451
11.31786	9.49668	1.116349	0.880592	1.008053	0.514837	0.851244	0.653347	1.116374
0.887051	0.846287	0.415855	0.236718	0.591835	0.073472	0.368266	0.234071	0.203157
0.670799	0.596008	0.170055	0.098693	0.223117	0.044224	0.113638	0.05107	0.096027
1.458663	1.337976	0.396625	0.361076	0.80456	0.28145	0.44291	0.224539	0.349128
0.281547	0.253003	0.082021	0.067269	0.084608	0.031238	0.070442	0.041957	0.056176
0.043065	0.051401	0.018164	0.014192	0.027616	0.00412	0.014454	0.012607	0.011523
1.113063	0.983556	0.253959	0.222441	0.362196	0.222646	0.314706	0.169939	0.263281
0.119092	0.090221	0.014073	0.013444	0.012466	0.005563	0.02784	0.008266	0.017782
3.237692	3.240241	1.670144	0.736035	2.857471	0.45145	1.138944	0.739338	0.668799
1.748323	1.632447	0.791441	0.245255	1.304374	0.213773	0.641292	0.536359	0.408869
0.051604	0.051869	0.034243	0.006642	0.039169	0.011987	0.019967	0.018545	0.006839
0.036002	0.035982	0.012438	0.011158	0.021638	0.00441	0.017807	0.012468	0.005523
0.500588	0.416901	0.165928	0.084209	0.264175	0.031044	0.145777	0.090002	0.110309
2.853228	2.640928	0.362049	0.513154	1.156992	0.185893	0.419593	0.245366	0.425798

33.44268	32.66232	6.013992	5.463655	11.67955	2.677592	8.061501	5.576342	7.175098
0.15384	0.130274	0.01136	0.013775	0.032858	0.022009	0.010189	0.013422	0.016915
5.568498	4.975145	0.960369	0.75089	1.630663	0.418493	1.076856	0.558031	0.830716
0.450839	0.443788	0.039791	0.051673	0.057823	0.022716	0.042451	0.04386	0.027798
0.069857	0.073057	0.00681	0.012599	0.015928	0.007228	0.004762	0.007495	0.00762
0.532181	0.527484	0.081404	0.066903	0.21039	0.04878	0.063906	0.043305	0.055205
2.32736	2.04738	0.461174	0.444837	0.641699	0.132102	0.482895	0.231637	0.490083
0.333412	0.262988	0.14203	0.076629	0.133946	0.017854	0.151551	0.121689	0.088788
6.828017	6.064287	1.846305	1.767654	2.609105	1.466826	2.373557	1.21848	1.668674
319.0001	308.4695	48.2408	40.00218	92.37753	16.98694	60.22942	37.08512	52.46009
0.085769	0.074266	0.02027	0.00818	0.041305	0.008556	0.015465	0.007954	0.015227
0.089957	0.089313	0.011254	0.01277	0.018837	0.011746	0.01174	0.008184	0.00729
9.292464	8.457432	1.022569	1.013939	1.091738	0.475411	0.855478	0.598433	1.130324
0.070528	0.062722	0.01298	0.010426	0.00807	0.006033	0.015817	0.004076	0.005583
0.864335	0.803168	0.040389	0.053965	0.136624	0.080359	0.061713	0.053416	0.068011
0.079959	0.083217	0.02605	0.010706	0.026436	0.010182	0.022528	0.012171	0.013198
0.368976	0.387673	0.209462	0.097182	0.233326	0.026888	0.160129	0.154171	0.073355
11.6721	10.44294	3.478481	2.823342	5.596615	1.981542	3.763297	2.134792	2.955578
0.245204	0.220653	0.030399	0.026187	0.070537	0.012751	0.042627	0.024297	0.035635
1.777376	1.667149	0.832559	0.471811	1.251371	0.134806	0.695377	0.517235	0.435854
0.373	0.409037	0.153432	0.12726	0.224834	0.034745	0.158354	0.121546	0.086299
0.740284	0.655205	0.280307	0.180552	0.409099	0.033976	0.293387	0.232856	0.169632
130.6042	135.8704	9.24141	3.010064	3.71273	9.248962	4.17002	5.214318	6.858236
8.705882	9.224141	1.014908	0.629505	1.039465	1.423055	0.552273	1.029097	0.794966
0.369367	0.396125	0.039411	0.01897	0.021945	0.021439	0.034818	0.019691	0.019984
508.9901	520.0221	15.98735	10.8826	8.744094	36.24611	18.97641	14.459	20.53748
0.825126	0.716343	0.140656	0.059744	0.131743	0.273486	0.042308	0.229936	0.119577
3.830005	3.741137	0.272883	0.294896	0.386502	1.03859	0.312362	0.398062	0.485085
3.046298	2.398304	0.442537	0.584627	0.184377	0.579297	0.318807	0.333438	0.185824
1.689629	1.695848	0.229392	0.064799	0.1984	0.168965	0.227005	0.186408	0.12663
2.321208	2.465723	0.392333	0.422946	0.201441	0.407927	0.329686	0.296341	0.067753
14.15842	13.098	1.507864	0.982319	1.692975	1.413728	1.807081	0.565556	0.741021
4.914427	4.639746	0.902426	0.300245	0.242725	0.717459	0.557473	0.762563	0.316071
99.75178	103.3383	6.738248	3.246001	2.601987	5.853185	3.174512	1.605512	4.417222
105.6957	109.1917	6.163493	2.994534	6.885297	8.193376	4.95315	4.051741	3.449728
0.059789	0.054926	0.005351	0.009253	0.002383	0.00587	0.00744	0.003219	0.006088
63.30973	65.64651	3.273425	2.553158	3.573026	4.945836	4.020155	3.522454	2.866729
0.154222	0.169994	0.006228	0.016352	0.024189	0.023469	0.011278	0.038467	0.022761
69.55429	67.37493	1.855736	5.682197	5.89431	8.252263	2.720971	3.60867	3.683359
53.05227	55.77046	1.515904	2.743374	0.777861	1.376229	1.067732	1.179884	0.823724
46.82283	48.07663	1.675086	1.084922	1.530831	1.951007	1.739283	2.140165	1.289726
52.1612	54.322	1.867332	2.154029	1.207952	1.208823	0.884211	0.767844	1.317585
57.96412	59.79647	1.586876	2.057049	1.295336	1.68369	0.962694	1.130953	0.982301
78.54555	82.5638	3.24471	3.303285	2.558373	1.185442	1.688918	1.381649	1.751243
82.30074	85.15811	2.340935	3.204729	1.044788	1.638696	1.140737	1.472984	1.438214
50.64872	51.31994	1.860464	1.950265	0.611433	0.486064	1.019652	1.053815	0.769966
68.06641	70.62641	1.560743	2.374212	1.238405	0.966365	1.190746	1.308584	1.041112
57.62077	60.66397	1.983657	3.485219	2.103276	2.292945	1.366847	1.31535	1.551081
65.14775	68.27832	2.664506	2.629256	0.840251	1.470774	1.094205	0.85702	1.516172

125.0529	134.535	7.542231	8.236522	2.163766	3.714105	2.465125	2.110892	4.946895
41.65583	43.5612	1.140453	1.699702	0.76444	1.018738	1.101715	0.927946	1.160734
12.29076	12.69018	0.335065	0.540106	0.111427	0.391913	0.475335	0.290895	0.318936
76.96859	80.27992	1.800008	3.556175	1.256655	1.111163	1.507918	1.646173	0.92968
73.45129	76.32144	1.109877	2.262745	1.428803	2.824118	2.170736	1.82086	1.260277
36.22933	36.27557	1.123861	1.844511	1.347945	1.132718	1.299735	1.308588	0.975627
39.04064	40.25915	0.837187	1.792548	0.98957	1.330564	1.243799	0.460351	1.836901
78.64526	82.9289	1.315922	1.934199	1.515712	1.030115	2.424605	1.912765	0.942291
11.91077	12.77463	0.37172	0.488322	0.168728	0.334441	0.617088	0.510151	0.465581
12.72439	12.84388	1.094628	1.508664	0.575361	1.663663	0.67294	0.703517	0.508794
21.70337	21.63104	1.591089	2.507057	1.479373	1.586072	0.884554	1.391523	0.777078
57.47672	60.02598	1.77153	2.280222	1.003687	1.320561	1.277715	1.005578	1.042519
71.50163	74.52344	1.813306	3.242134	0.785005	1.514645	1.234167	1.476829	1.231369
69.45241	71.34177	2.906611	3.441556	2.228367	1.418552	2.67668	3.068083	1.249921
9.375971	10.17397	0.455275	1.862624	0.192757	0.143469	0.269663	0.367667	0.255148
40.12752	40.04506	1.846867	2.438823	1.920552	1.406449	1.488132	1.633232	0.85282
68.43341	71.51044	1.915102	1.803006	1.641202	1.384571	2.108133	1.582605	1.311174
1458.371	1518.298	40.03019	54.9099	26.84284	21.98406	22.13293	28.43255	26.48152
36.57861	36.79557	0.787326	0.873921	0.59507	0.742551	0.388724	0.678449	1.844845
9.477846	11.02405	0.859035	1.748206	0.308985	0.731089	0.294514	0.120748	0.341706
1.025419	1.014761	0.064364	0.052146	0.087667	0.030627	0.071368	0.156494	0.068048
65.56553	66.8131	2.863366	3.044848	3.163642	1.348477	1.685479	2.311526	1.213059
144.1077	148.3687	4.662902	3.931395	3.908091	3.587699	2.534813	4.101167	2.192675
31.46031	32.72124	1.517529	1.069817	1.494823	1.438877	1.555958	1.695592	0.919673
5.17E-05	6.47E-05	2.81E-06	7.55E-06	2.55E-05	1.52E-05	2.18E-05	5.1E-06	1.2E-05
0.000441	0.000427	5.89E-05	4.29E-05	0.000151	0.000176	0.000133	5.8E-05	9.69E-05
0.004819	0.00463	0.000823	0.00089	0.001679	0.002028	0.000811	0.000566	0.000779
0.010267	0.009857	0.000863	0.001245	0.002235	0.001995	0.001543	0.000812	0.001332
0.004945	0.005322	0.001002	0.000982	0.002133	0.002442	0.001623	0.001104	0.00114
0.00102	0.000947	0.000128	0.000115	0.000268	0.000377	0.000173	0.000144	0.000196
0.011998	0.011884	0.00277	0.002161	0.004075	0.006053	0.002192	0.001799	0.001844
0.011931	0.01204	0.003291	0.002192	0.00329	0.006529	0.0023	0.001936	0.001555
0.000592	0.000559	9.56E-05	6.6E-05	0.000266	0.000221	9.05E-05	7.34E-05	8.93E-05
0.021512	0.02215	0.006206	0.005436	0.011391	0.014139	0.003471	0.002999	0.003232
0.016014	0.016769	0.004738	0.002955	0.004882	0.009242	0.002646	0.002407	0.001798
0.004123	0.003709	0.00028	0.000285	0.00075	0.000585	0.000472	0.000213	0.000319
0.00423	0.003815	0.000412	0.00044	0.001091	0.000901	0.000337	0.000267	0.000281
0.002517	0.002109	0.000106	0.000126	0.000219	4.21E-05	0.000199	0.000232	0.000147
0.024177	0.024129	0.006038	0.005258	0.009536	0.01366	0.00292	0.002338	0.001857
0.010256	0.010029	0.000813	0.000537	0.00375	0.002106	0.000866	0.000682	0.001066
0.042027	0.042965	0.021221	0.017232	0.029949	0.04433	0.006772	0.007444	0.002167
0.027988	0.027173	0.003427	0.002723	0.008183	0.010236	0.002153	0.001657	0.002344
0.043366	0.044478	0.017137	0.014799	0.028135	0.043552	0.005697	0.005224	0.003096
0.036324	0.03769	0.014165	0.011079	0.020245	0.038549	0.005035	0.004895	0.002873
0.02912	0.030159	0.010829	0.007966	0.014065	0.031044	0.003989	0.004206	0.002051
0.0195	0.019168	0.006643	0.00476	0.007724	0.015165	0.00292	0.00284	0.001906
0.006572	0.006306	0.00065	9.6E-05	0.003	0.002359	0.000637	0.000671	0.000665
0.029381	0.030769	0.020646	0.016237	0.021011	0.040493	0.006631	0.007883	0.001175
0.01086	0.010708	0.002412	0.001788	0.002882	0.006792	0.00093	0.001014	0.001109

0.023751	0.024163	0.007332	0.005231	0.00736	0.019331	0.002783	0.002883	0.001041
0.001947	0.001627	0.000272	0.00045	0.000208	0.000599	6.69E-05	0.000171	8.5E-05
0.000398	0.000349	0.000172	9.16E-05	0.0001	0.000255	8.06E-05	9.8E-05	3.19E-05
0.000358	0.000347	6.43E-05	2.82E-05	8.88E-05	0.000135	3.93E-05	4.53E-05	1.32E-05
0.000509	0.000463	0.000681	0.000347	0.000226	0.000891	0.000375	0.000448	9.03E-05
0.008012	0.008351	0.000894	0.000516	0.001741	0.003191	0.001166	0.00123	0.000926
0.008941	0.00877	0.001595	0.001771	0.001211	0.004236	0.000811	0.000848	0.000551
0.460344	0.463949	0.142884	0.111285	0.199012	0.343628	0.05741	0.057491	0.035363
0.004203	0.004174	0.002153	0.001291	0.001017	0.004017	0.001259	0.001756	0.000774
0.002553	0.00267	0.001207	0.000507	0.001425	0.001746	0.00084	0.001088	0.000306
0.000261	0.000255	7.09E-05	3.4E-05	6.5E-05	0.000158	4.64E-05	5.95E-05	2.73E-05
0.003182	0.003182	0.00096	0.000583	0.000777	0.002742	0.000458	0.000598	0.000353
0.005561	0.005878	0.000539	0.000404	0.001453	0.00263	0.00073	0.000653	0.000495
0.000109	9.93E-05	2.32E-05	6.38E-06	1.29E-05	4.31E-05	7.96E-06	1.65E-05	8.62E-06
0.001206	0.001039	0.000342	0.000392	0.000291	0.00072	0.000233	0.000276	0.000145
0.000379	0.000364	7.42E-05	1.15E-05	8.57E-05	0.000123	3.59E-05	3.82E-05	3.09E-05
0.007327	0.006984	0.000798	0.001305	0.001082	0.003141	0.00043	0.000795	0.000805
0.001433	0.001323	6.84E-05	0.000118	0.000156	0.000385	7.87E-05	0.000141	0.000141
3.86E-05	3.57E-05	1.38E-05	5.73E-06	1.43E-05	2.84E-05	8.55E-06	1.13E-05	5.89E-06
0.000129	0.000118	1.02E-05	8.7E-06	8E-06	1.48E-05	9.68E-06	1.02E-05	5.5E-06
0.001317	0.001286	0.000117	0.000148	0.00032	0.000509	0.000126	0.000137	6.65E-05
0.002036	0.001752	0.00023	0.0002	0.000125	0.000376	0.000143	0.000214	0.000124
0.012661	0.012861	0.00351	0.003155	0.00507	0.006948	0.001852	0.002399	0.000778

SEM (JAK2	Control - G	Control - G	Control - G	Control - G	Control - G	Control - G	Control - G	Control - G
0.636106	0.961532	0.993504	-1.01198	0.696522	0.955402	1.101205	0.661366	0.95342
0.331907	0.758377	0.962868	1.057358	0.82503	0.955402	-1.04088	0.597694	0.95342
11.50408	0.091807	0.303802	1.110353	0.195245	0.815246	1.081712	0.678503	0.95342
6.950235	0.553523	0.962868	1.033545	0.361274	0.915711	1.052887	0.745038	0.95342
3.438001	0.363639	0.84849	1.164346	0.477957	0.934464	-1.12581	0.111624	0.95342
0.055028	0.893379	0.962868	-1.02881	0.365199	0.915711	1.213272	0.300127	0.95342
19.42757	0.262949	0.724186	1.074046	0.366613	0.915711	1.058626	0.823818	0.95342
4.260846	0.852519	0.962868	1.036958	0.834552	0.955402	1.04162	0.981662	0.98754
9.418981	0.694528	0.962868	-1.12004	0.522153	0.943244	-1.20343	0.803356	0.95342
4.753917	0.838494	0.962868	-1.05182	0.94674	0.979621	-1.01669	0.890976	0.976723
32.20862	0.804196	0.962868	-1.06369	0.834371	0.955402	1.05345	0.648118	0.95342
20.04293	0.967438	0.993504	-1.00867	0.86643	0.955402	1.036238	0.834466	0.95342
4.782053	0.762007	0.962868	1.062528	0.844608	0.955402	-1.04001	0.61845	0.95342
8.333628	0.662091	0.962868	1.03813	0.001408	0.236463	1.350127	0.00436	0.732474
5.163999	0.10638	0.330959	1.180795	0.210274	0.815246	1.133367	0.702285	0.95342
76.79783	0.997253	0.997253	-1.00064	0.728797	0.955402	1.067013	0.72622	0.95342
0.018904	0.073778	0.282583	-2.08573	0.153344	0.815246	-1.78749	0.699553	0.95342
0.796946	0.092226	0.303802	-1.48001	0.200925	0.815246	-1.34248	0.667822	0.95342
6.96964	0.079525	0.284259	-1.50064	0.186755	0.815246	-1.35242	0.644661	0.95342
2.814743	0.032631	0.271366	-1.64491	0.096775	0.815246	-1.46289	0.60048	0.95342
0.047397	0.001611	0.220027	-1.42908	0.070333	0.815246	-1.23122	0.11859	0.95342
0.174217	0.068613	0.274712	-1.86628	0.124105	0.815246	-1.68592	0.759992	0.95342
0.06418	0.117811	0.35986	-2.09694	0.244697	0.822183	-1.72509	0.673808	0.95342
0.084552	0.014236	0.271366	-2.03007	0.244337	0.822183	-1.38004	0.16522	0.95342
0.845139	0.062996	0.271366	-2.26013	0.158598	0.815246	-1.84044	0.629518	0.95342
0.367455	0.061066	0.271366	-2.12811	0.189948	0.815246	-1.68182	0.547985	0.95342
0.541663	0.015977	0.271366	-1.69409	0.224657	0.815246	-1.29074	0.196533	0.95342
0.264838	0.051003	0.271366	-1.41256	0.444783	0.934464	-1.14032	0.216724	0.95342
2.868606	0.032424	0.271366	-1.97784	0.183179	0.815246	-1.51212	0.383075	0.95342
8.974674	0.090661	0.303802	-1.23256	0.395548	0.934464	-1.11451	0.381319	0.95342
7.685715	0.03619	0.271366	-1.48669	0.128794	0.815246	-1.34617	0.530356	0.95342
2.009595	0.027106	0.271366	-1.49819	0.266693	0.8768	-1.21707	0.240615	0.95342
2.523571	0.00897	0.271366	-1.93534	0.025324	0.811574	-1.78688	0.659191	0.95342
1.17696	0.022159	0.271366	-1.36424	0.333128	0.90267	-1.14811	0.161752	0.95342
0.176549	0.083207	0.291224	-1.92814	0.165289	0.815246	-1.68316	0.712833	0.95342
0.082876	0.002619	0.220027	-1.98581	0.020426	0.811574	-1.66609	0.405142	0.95342
0.291603	0.038722	0.271366	-2.08366	0.15863	0.815246	-1.63263	0.477044	0.95342
0.05125	0.105592	0.330959	-1.69817	0.301262	0.891111	-1.39583	0.540802	0.95342
0.008577	0.129419	0.388256	-1.61317	0.318254	0.891111	-1.3648	0.589204	0.95342
0.173503	0.068678	0.274712	-1.78151	0.238353	0.822183	-1.44405	0.496747	0.95342
0.012534	0.208774	0.598882	-1.36152	0.43488	0.934464	-1.20928	0.624917	0.95342
0.936139	0.077374	0.282583	-2.16673	0.172174	0.815246	-1.80552	0.668728	0.95342
0.384172	0.042639	0.271366	-2.29753	0.17565	0.815246	-1.72316	0.468726	0.95342
0.011389	0.061262	0.271366	-2.29824	0.082727	0.815246	-2.15533	0.881496	0.976723
0.005834	0.074274	0.282583	-1.92985	0.27139	0.8768	-1.48859	0.470141	0.95342
0.085295	0.044551	0.271366	-2.08054	0.211025	0.815246	-1.56186	0.417335	0.95342
0.409443	0.019572	0.271366	-1.6931	0.164494	0.815246	-1.3546	0.303102	0.95342

7.055205	0.014323	0.271366	-1.68116	0.084374	0.815246	-1.46672	0.41792	0.95342
0.012244	0.665606	0.962868	-1.07653	0.602342	0.955402	-1.09305	0.928769	0.979438
0.779033	0.006978	0.271366	-1.83367	0.030098	0.811574	-1.60926	0.535781	0.95342
0.045683	0.033541	0.271366	-1.28009	0.358709	0.915711	-1.11692	0.203426	0.95342
0.00479	0.057219	0.271366	-1.43713	0.029802	0.811574	-1.5046	0.761812	0.95342
0.030574	0.041844	0.271366	-1.44045	0.48051	0.934464	-1.13015	0.167283	0.95342
0.324462	0.038676	0.271366	-1.76833	0.124789	0.815246	-1.5155	0.561752	0.95342
0.048932	0.198606	0.585364	-1.5771	0.346656	0.915711	-1.39263	0.721901	0.95342
1.297296	0.030411	0.271366	-1.91879	0.175911	0.815246	-1.55951	0.380188	0.95342
50.61941	0.048926	0.271366	-1.56202	0.161088	0.815246	-1.36593	0.540746	0.95342
0.01486	0.055795	0.271366	-1.89657	0.41059	0.934464	-1.30725	0.255766	0.95342
0.009339	0.02731	0.271366	-1.59163	0.286345	0.878057	-1.24223	0.224568	0.95342
0.902791	0.058431	0.271366	-1.37123	0.704378	0.955402	-1.06325	0.123116	0.95342
0.007733	0.291324	0.776371	-1.21472	0.313496	0.891111	-1.20397	0.961164	0.979438
0.047598	0.04857	0.271366	-1.25317	0.920861	0.979621	1.011031	0.03927	0.95342
0.016382	0.035279	0.271366	-1.81452	0.038524	0.811574	-1.79471	0.967778	0.979438
0.083058	0.04241	0.271366	-2.1008	0.089957	0.815246	-1.84617	0.714068	0.95342
2.356353	0.051099	0.271366	-2.03917	0.173467	0.815246	-1.62961	0.526577	0.95342
0.035283	0.062415	0.271366	-1.55969	0.499591	0.934464	-1.16959	0.219224	0.95342
0.337473	0.052498	0.271366	-2.06866	0.068708	0.815246	-1.97308	0.896094	0.976723
0.081142	0.076202	0.282583	-1.75887	0.087137	0.815246	-1.72235	0.94593	0.979438
0.129621	0.059597	0.271366	-1.95228	0.088753	0.815246	-1.82362	0.842859	0.95342
9.035435	0.322965	0.797913	1.08191	0.221963	0.815246	1.102676	0.80979	0.95342
0.552578	0.282026	0.764199	-1.23793	0.386542	0.934464	-1.1908	0.829574	0.95342
0.016873	0.345721	0.818043	1.096239	0.329691	0.90267	-1.0997	0.061117	0.95342
23.65326	0.460547	0.932192	1.046106	0.467229	0.934464	1.0454	0.991134	0.991134
0.056828	0.822158	0.962868	-1.054	0.857114	0.955402	-1.04302	0.96429	0.979438
0.444816	0.05719	0.271366	1.466354	0.503447	0.934464	1.139745	0.202273	0.95342
0.25057	0.06695	0.274712	1.425968	0.643781	0.955402	-1.09093	0.024715	0.95342
0.104323	0.878191	0.962868	-1.02142	0.104793	0.815246	-1.25828	0.139293	0.95342
0.139553	0.77718	0.962868	-1.04977	0.472709	0.934464	-1.13172	0.66176	0.95342
0.705867	0.982148	0.993981	1.002851	0.783229	0.955402	-1.03565	0.766131	0.95342
0.658039	0.697643	0.962868	1.074656	0.219642	0.815246	-1.25899	0.110507	0.95342
5.178701	0.334898	0.815403	1.069139	0.038646	0.811574	1.159341	0.244507	0.95342
5.432997	0.659415	0.962868	1.036165	0.870074	0.955402	-1.01293	0.546436	0.95342
0.001605	0.40375	0.874424	1.128782	0.082359	0.815246	-1.29363	0.013102	0.95342
3.790727	0.769851	0.962868	1.02601	0.819009	0.955402	-1.02028	0.602754	0.95342
0.021611	0.369706	0.850831	1.202372	0.427194	0.934464	1.176886	0.91635	0.976723
5.101566	0.887392	0.962868	1.015445	0.572413	0.955402	1.064733	0.671702	0.95342
1.766427	0.55319	0.962868	-1.02384	0.407869	0.934464	-1.03354	0.812028	0.95342
0.788592	0.345693	0.818043	-1.05605	0.465605	0.934464	-1.04323	0.827936	0.95342
1.602631	0.672448	0.962868	1.016504	0.692107	0.955402	-1.01545	0.415012	0.95342
1.688194	0.846285	0.962868	1.007155	0.926941	0.979621	1.003377	0.918585	0.976723
2.353416	0.655248	0.962868	1.019109	0.208198	0.815246	1.055521	0.409701	0.95342
2.294714	0.857766	0.962868	-1.00605	0.993386	0.993386	1.000279	0.851268	0.95342
1.271325	0.917157	0.975205	1.003725	0.768888	0.955402	1.010567	0.849331	0.95342
2.193213	0.798702	0.962868	-1.00869	0.97379	0.979621	-1.00111	0.824141	0.95342
1.249458	0.490961	0.938136	-1.03413	0.963231	0.979621	-1.00224	0.520073	0.95342
1.730121	0.736426	0.962868	-1.01264	0.821812	0.955402	-1.00843	0.911137	0.976723

5.587237	0.481035	0.938136	1.041448	0.51173	0.934464	1.038518	0.960834	0.979438
1.28214	0.874116	0.962868	1.006597	0.803418	0.955402	-1.01039	0.684065	0.95342
0.430967	0.315491	0.797913	1.046063	0.306487	0.891111	-1.04697	0.048423	0.95342
1.770491	0.956072	0.993504	-1.00181	0.666508	0.955402	-1.01431	0.706839	0.95342
1.637523	0.888785	0.962868	-1.00525	0.684055	0.955402	-1.01538	0.789079	0.95342
1.181951	0.857948	0.962868	1.009672	0.655595	0.955402	1.024313	0.789011	0.95342
1.866826	0.247121	0.691939	1.076114	0.533777	0.953985	-1.0377	0.080708	0.95342
3.089732	0.441805	0.916337	1.029062	0.228075	0.815246	-1.04629	0.05387	0.95342
1.176731	0.023118	0.271366	1.200664	0.43233	0.934464	1.062499	0.119367	0.95342
0.811831	0.320437	0.797913	1.115777	0.184719	0.815246	-1.1395	0.024836	0.95342
1.266634	0.800355	0.962868	1.023308	0.217674	0.815246	-1.11251	0.140624	0.95342
2.003096	0.76934	0.962868	-1.01139	0.870098	0.955402	-1.00633	0.896666	0.976723
1.821767	0.959251	0.993504	1.001769	0.490967	0.934464	-1.02422	0.459808	0.95342
2.099398	0.758922	0.962868	1.015855	0.947629	0.979621	-1.00337	0.709612	0.95342
0.311226	0.405983	0.874424	-1.06912	0.814838	0.955402	1.018903	0.289307	0.95342
1.380735	0.975763	0.993504	1.001735	0.194734	0.815246	-1.07801	0.18494	0.95342
1.579851	0.560184	0.962868	-1.02214	0.494283	0.934464	1.026059	0.210296	0.95342
41.83064	0.854337	0.962868	1.006229	0.832151	0.955402	-1.0072	0.692758	0.95342
1.19923	0.210322	0.598882	-1.05554	0.584211	0.955402	1.023617	0.077036	0.95342
0.511931	0.868945	0.962868	1.0145	0.552388	0.955402	1.05337	0.666957	0.95342
0.070936	0.028355	0.271366	1.403145	0.5437	0.955402	1.094243	0.100753	0.95342
1.510493	0.707947	0.962868	-1.01791	0.509558	0.934464	-1.03182	0.774244	0.95342
3.246798	0.485478	0.938136	-1.02644	0.79999	0.955402	-1.00957	0.655386	0.95342
0.790831	0.660046	0.962868	-1.03177	0.843455	0.955402	-1.01425	0.808048	0.95342
1.52E-05	0.102828	0.330959	-2.0572	0.745628	0.955402	1.150435	0.053703	0.95342
9.32E-05	0.397064	0.874424	-1.46525	0.669425	0.955402	1.211254	0.207079	0.95342
0.00072	0.522421	0.962868	-1.21911	0.851471	0.955402	-1.0595	0.649939	0.95342
0.001561	0.880058	0.962868	-1.02908	0.50437	0.934464	1.14831	0.414324	0.95342
0.00126	0.430751	0.904577	-1.332	0.690067	0.955402	1.200945	0.239284	0.95342
0.000173	0.723001	0.962868	-1.1243	0.76084	0.955402	1.105811	0.511238	0.95342
0.001755	0.488161	0.938136	-1.26081	0.880728	0.960794	-1.05122	0.585945	0.95342
0.001267	0.55233	0.962868	-1.1904	0.816557	0.955402	-1.0702	0.716116	0.95342
9.19E-05	0.422469	0.898416	-1.29426	0.588998	0.955402	-1.18909	0.791044	0.95342
0.00309	0.508833	0.960493	-1.26937	0.786544	0.955402	-1.10235	0.695241	0.95342
0.00119	0.745134	0.962868	-1.09058	0.957626	0.979621	-1.01426	0.785578	0.95342
0.000355	0.87022	0.962868	-1.02557	0.706522	0.955402	1.059983	0.589879	0.95342
0.000367	0.715613	0.962868	-1.05752	0.844434	0.955402	1.030555	0.575841	0.95342
0.000136	0.62885	0.962868	1.054844	0.919848	0.979621	1.01092	0.701552	0.95342
0.002243	0.606868	0.962868	-1.13305	0.819631	0.955402	1.056801	0.459165	0.95342
0.000939	0.457644	0.932192	-1.1401	0.650022	0.955402	-1.08312	0.77055	0.95342
0.002459	0.621966	0.962868	-1.15403	0.86999	0.955402	1.048607	0.51227	0.95342
0.00195	0.840403	0.962868	-1.03786	0.627829	0.955402	1.09376	0.49375	0.95342
0.003086	0.666878	0.962868	-1.13322	0.755798	0.955402	1.094489	0.460048	0.95342
0.002516	0.76624	0.962868	-1.08833	0.629648	0.955402	1.147379	0.437446	0.95342
0.001643	0.896098	0.962868	-1.03666	0.56939	0.955402	1.170365	0.485089	0.95342
0.002092	0.732852	0.962868	-1.10069	0.568624	0.955402	1.174134	0.364586	0.95342
0.00057	0.725601	0.962868	-1.06737	0.951632	0.979621	1.011319	0.680777	0.95342
0.001285	0.871716	0.962868	-1.05399	0.774044	0.955402	1.098046	0.65415	0.95342
0.000732	0.720596	0.962868	1.077812	0.317196	0.891111	1.235194	0.516459	0.95342

0.000641	0.820213	0.962868	1.054065	0.466009	0.934464	1.184863	0.614281	0.95342
0.000109	0.566049	0.962868	1.110304	0.287459	0.878057	1.215754	0.618488	0.95342
3.41E-05	0.996613	0.997253	-1.00108	0.942231	0.979621	-1.01862	0.945609	0.979438
1.22E-05	0.803379	0.962868	1.044124	0.748899	0.955402	-1.0571	0.570142	0.95342
7.12E-05	0.809712	0.962868	-1.12456	0.772904	0.955402	-1.1511	0.961819	0.979438
0.001008	0.899823	0.962868	1.023867	0.370645	0.915711	1.184054	0.440279	0.95342
0.000417	0.853265	0.962868	1.036195	0.432123	0.934464	1.163949	0.546526	0.95342
0.03324	0.765636	0.962868	-1.07835	0.731598	0.955402	1.090702	0.522616	0.95342
0.000497	0.791735	0.962868	1.089415	0.969338	0.979621	-1.01254	0.762337	0.95342
0.000369	0.597302	0.962868	-1.19647	0.865669	0.955402	-1.05898	0.718852	0.95342
2.45E-05	0.317903	0.797913	1.259476	0.619395	0.955402	1.120694	0.610852	0.95342
0.000236	0.899459	0.962868	1.031578	0.748335	0.955402	1.082215	0.845624	0.95342
0.000601	0.975119	0.993504	-1.0055	0.279007	0.878057	1.212062	0.265821	0.95342
1.03E-05	0.397431	0.874424	1.161424	0.626428	0.955402	1.089486	0.716234	0.95342
8.59E-05	0.491404	0.938136	-1.23921	0.858341	0.955402	1.056976	0.38775	0.95342
2.41E-05	0.694094	0.962868	1.07452	0.942714	0.979621	-1.0132	0.642068	0.95342
0.000421	0.843931	0.962868	1.040927	0.429483	0.934464	1.175664	0.55137	0.95342
0.000158	0.86669	0.962868	1.027828	0.223474	0.815246	1.22348	0.29132	0.95342
2.04E-06	0.738184	0.962868	1.126069	0.818075	0.955402	1.08509	0.916808	0.976723
9.5E-06	0.29576	0.776371	1.148379	0.916094	0.979621	-1.01289	0.251155	0.95342
0.00014	0.391566	0.874424	1.154386	0.037111	0.811574	1.434907	0.197995	0.95342
0.000134	0.743133	0.962868	1.043122	0.427942	0.934464	1.108059	0.639574	0.95342
0.001192	0.940705	0.993504	-1.01522	0.646795	0.955402	1.097712	0.594649	0.95342

Control - G	Control - Ve	Control - Ve	Control - Ve	JAK2A - G	JAK2A - G	JAK2A - G	JAK2A - G	JAK2A - G
1.114394	0.882358	0.986494	1.03721	0.47609	0.707815	-1.18251	0.473088	0.998377
-1.10058	0.218275	0.986494	-1.25373	0.091641	0.301875	-1.34653	0.176142	0.998377
-1.02648	0.758564	0.986494	1.019113	0.799412	0.914371	-1.01405	0.594188	0.998377
1.018714	0.767671	0.986494	1.016998	0.425512	0.668094	-1.04332	0.187874	0.998377
-1.31083	0.235958	0.986494	-1.22086	0.505049	0.717734	1.111321	0.517614	0.998377
1.248232	0.390332	0.986494	1.201126	0.475942	0.707815	-1.15485	0.957805	0.998377
-1.01457	0.793079	0.986494	1.016918	0.642696	0.811826	-1.02759	0.345117	0.998377
1.004496	0.531316	0.986494	-1.13043	0.010189	0.120731	-1.65798	0.832778	0.998377
-1.07446	0.447821	0.986494	-1.24601	0.878515	0.960733	1.042694	0.403374	0.998377
1.034554	0.610581	0.986494	-1.13483	0.004508	0.076269	-2.05358	0.747365	0.998377
1.120549	0.931404	0.986494	-1.02166	0.012831	0.121829	-1.86304	0.85597	0.998377
1.045227	0.957134	0.986494	1.011438	0.013893	0.121829	-1.68564	0.844576	0.998377
-1.10504	0.175849	0.908746	-1.3171	0.250237	0.502126	-1.24721	0.950451	0.998377
1.300538	0.178504	0.908746	1.12402	0.321808	0.563163	1.084437	0.481694	0.998377
-1.04185	0.935589	0.986494	-1.00855	0.653654	0.813437	-1.04111	0.922489	0.998377
1.0677	0.842364	0.986494	-1.03788	0.024882	0.144142	-1.51668	0.782013	0.998377
1.166847	0.702453	0.986494	-1.16502	0.853209	0.960733	-1.07263	0.853329	0.998377
1.102441	0.684338	0.986494	-1.09678	0.247198	0.502126	-1.28676	0.958745	0.998377
1.109599	0.84985	0.986494	-1.04354	0.216768	0.477919	-1.30658	0.982434	0.998377
1.124425	0.81471	0.986494	-1.05377	0.109739	0.335202	-1.41471	0.956546	0.998377
1.160706	0.703035	0.986494	1.038442	0.769375	0.903881	-1.03575	0.867443	0.998377
1.106977	0.401937	0.986494	-1.32365	0.978641	0.984501	1.008479	0.912887	0.998377
1.215552	0.649345	0.986494	-1.23479	0.64911	0.813437	1.221678	0.883298	0.998377
1.471027	0.642468	0.986494	-1.13555	0.800075	0.914371	1.067902	0.606347	0.998377
1.228037	0.666789	0.986494	-1.20113	0.880672	0.960733	-1.0624	0.955192	0.998377
1.26536	0.783618	0.986494	-1.11327	0.694296	0.851399	-1.15696	0.991344	0.998377
1.312497	0.708579	0.986494	-1.0807	0.262988	0.502126	-1.2495	0.633472	0.998377
1.238744	0.948124	0.986494	-1.01118	0.827313	0.939112	-1.03602	0.742087	0.998377
1.307992	0.499414	0.986494	-1.23039	0.440296	0.682203	-1.25234	0.659855	0.998377
1.10592	0.849811	0.986494	-1.02329	0.198934	0.451633	-1.19855	0.805332	0.998377
1.104391	0.706761	0.986494	-1.06661	0.333774	0.578083	-1.26004	0.907061	0.998377
1.230982	0.272522	0.986494	-1.21411	0.263018	0.502126	-1.20663	0.566193	0.998377
1.083084	0.378882	0.986494	-1.19997	0.507128	0.717734	-1.26952	0.99188	0.998377
1.188251	0.301258	0.986494	-1.16003	0.974222	0.984501	-1.00467	0.166922	0.998377
1.145546	0.61442	0.986494	-1.20465	0.184469	0.437411	-1.6028	0.882207	0.998377
1.191898	0.533093	0.986494	-1.14005	0.965954	0.984501	1.008522	0.550241	0.998377
1.276262	0.678797	0.986494	-1.15215	0.5383	0.717734	-1.22146	0.825379	0.998377
1.216603	0.878394	0.986494	-1.05011	0.716159	0.85939	-1.11665	0.710257	0.998377
1.181984	0.930063	0.986494	-1.02748	0.228261	0.485416	-1.42999	0.276705	0.998377
1.233688	0.676971	0.986494	-1.137	0.62644	0.797288	-1.15304	0.810701	0.998377
1.125891	0.457834	0.986494	-1.19791	0.529742	0.717734	1.155801	0.228188	0.998377
1.200055	0.68586	0.986494	-1.1881	0.71015	0.85831	-1.16208	0.868332	0.998377
1.333325	0.719576	0.986494	-1.15262	0.724829	0.863626	-1.14123	0.846373	0.998377
1.066307	0.502022	0.986494	-1.33675	0.97784	0.984501	1.011411	0.904753	0.998377
1.296426	0.675402	0.986494	-1.16189	0.534054	0.717734	-1.23588	0.998377	0.998377
1.332092	0.544674	0.986494	-1.23813	0.920367	0.984501	-1.0339	0.594945	0.998377
1.249887	0.651617	0.986494	-1.1019	0.319304	0.563163	-1.22692	0.677101	0.998377

1.146207	0.60262	0.986494	-1.10332	0.410048	0.668094	-1.26094	0.935845	0.998377
-1.01534	0.375671	0.986494	-1.16414	0.312694	0.558858	-1.179	0.301345	0.998377
1.139447	0.682271	0.986494	-1.08995	0.994023	0.994023	1.001494	0.554507	0.998377
1.146089	0.561292	0.986494	1.065953	0.281257	0.518085	-1.15021	0.902782	0.998377
-1.04694	0.184354	0.910923	-1.24903	0.246512	0.502126	1.247492	0.783668	0.998377
1.274565	0.54467	0.986494	1.110636	0.238528	0.500908	-1.21593	0.955028	0.998377
1.166824	0.723571	0.986494	-1.09841	0.946607	0.984501	-1.01698	0.720829	0.998377
1.132463	0.927883	0.986494	1.032104	0.08149	0.285216	-1.80976	0.647976	0.998377
1.230377	0.594253	0.986494	-1.16174	0.785165	0.909936	-1.11758	0.756844	0.998377
1.143561	0.676111	0.986494	-1.09577	0.260385	0.502126	-1.26626	0.848699	0.998377
1.450804	0.853146	0.986494	-1.06175	0.705405	0.85831	1.123231	0.562247	0.998377
1.281264	0.726064	0.986494	1.073181	0.058923	0.235692	1.451769	0.929217	0.998377
1.289653	0.582604	0.986494	-1.09305	0.970137	0.984501	1.00575	0.545623	0.998377
1.008925	0.989598	0.999821	1.002382	0.767825	0.903881	-1.05248	0.409567	0.998377
1.266992	0.366953	0.986494	1.10556	0.220369	0.477919	-1.13898	0.497616	0.998377
1.011038	0.398323	0.986494	-1.25988	0.507158	0.717734	-1.18729	0.973373	0.998377
1.137923	0.516911	0.986494	-1.25752	0.254609	0.502126	-1.46987	0.94179	0.998377
1.25132	0.738313	0.986494	-1.12522	0.528246	0.717734	-1.23594	0.812262	0.998377
1.333534	0.853293	0.986494	-1.04367	0.785361	0.909936	1.061564	0.587693	0.998377
1.048444	0.503399	0.986494	-1.27551	0.274588	0.512565	-1.46155	0.95513	0.998377
1.021208	0.796303	0.986494	-1.0832	0.186432	0.437411	-1.48298	0.669773	0.998377
1.070553	0.472078	0.986494	-1.28194	0.160755	0.412116	-1.59313	0.753842	0.998377
1.019195	0.17403	0.908746	1.115322	0.892224	0.967055	1.010201	0.603637	0.998377
1.039576	0.707655	0.986494	-1.07412	0.023207	0.144142	1.494187	0.668532	0.998377
-1.20553	0.521908	0.986494	-1.06411	0.92981	0.984501	1.008111	0.406629	0.998377
-1.00068	0.423956	0.986494	1.050095	0.46071	0.697291	1.043673	0.70339	0.998377
1.010525	0.581128	0.986494	-1.13813	0.42006	0.668094	-1.19715	0.597408	0.998377
-1.28656	0.438909	0.986494	-1.16362	0.552786	0.731245	-1.11627	0.945386	0.998377
-1.55563	0.364522	0.986494	-1.18721	0.12222	0.359133	-1.32508	0.136134	0.998377
-1.23189	0.531576	0.986494	-1.09069	0.423058	0.668094	1.111497	0.958206	0.998377
-1.07806	0.918535	0.986494	1.017699	0.53799	0.717734	1.105785	0.715666	0.998377
-1.0386	0.937347	0.986494	-1.01005	0.457047	0.697291	-1.09441	0.496323	0.998377
-1.35299	0.115144	0.690864	-1.34752	0.560783	0.736028	1.107875	0.593158	0.998377
1.084369	0.270207	0.986494	1.079654	0.584532	0.761251	1.036403	0.576938	0.998377
-1.04957	0.84848	0.986494	1.014916	0.359638	0.616523	1.069228	0.629009	0.998377
-1.46023	0.938935	0.986494	-1.01111	0.616099	0.790112	1.07115	0.635903	0.998377
-1.04682	0.88581	0.986494	-1.01268	0.187462	0.437411	1.117856	0.664544	0.998377
-1.02166	0.732686	0.986494	1.072225	0.943201	0.984501	-1.01388	0.536814	0.998377
1.048539	0.341514	0.986494	1.109657	0.97744	0.984501	1.002881	0.735829	0.998377
-1.00947	0.000586	0.049247	1.164327	0.032769	0.164334	1.087254	0.178716	0.998377
1.012289	0.135161	0.783	1.086175	0.003576	0.076269	1.176321	0.561935	0.998377
-1.03221	0.024541	0.242521	1.095328	0.39855	0.656435	1.031649	0.251318	0.998377
-1.00377	0.010816	0.12114	1.104609	0.178518	0.437411	1.048858	0.363519	0.998377
1.035728	0.086403	0.580631	1.07739	0.520956	0.717734	1.026204	0.199296	0.998377
1.006329	0.010602	0.12114	1.095612	0.157501	0.412116	1.04701	0.273395	0.998377
1.006816	0.005116	0.095506	1.113627	0.262123	0.502126	1.039216	0.698239	0.998377
1.007565	0.007338	0.102728	1.102019	0.054897	0.22746	1.065941	0.247515	0.998377
1.031815	0.046969	0.415306	1.105079	0.123986	0.359133	1.075015	0.235987	0.998377
1.004168	0.002685	0.075188	1.129357	0.081284	0.285216	1.065423	0.168171	0.998377

-1.00282	0.076773	0.560775	1.110145	0.370505	0.628736	1.050327	0.162992	0.998377
-1.01705	0.064012	0.512097	1.082526	0.101013	0.314697	1.068396	0.235731	0.998377
-1.09519	0.002488	0.075188	1.157687	0.146741	0.412116	1.064375	0.436717	0.998377
-1.01247	0.009699	0.12114	1.09477	0.490237	0.717734	1.021869	0.166428	0.998377
-1.01007	0.001751	0.075188	1.13698	0.283713	0.518085	1.039227	0.26194	0.998377
1.0145	0.171585	0.908746	1.077629	0.869453	0.960733	-1.00842	0.988038	0.998377
-1.11668	0.10611	0.660239	1.096283	0.024597	0.144142	1.134859	0.526229	0.998377
-1.07669	0.102039	0.659328	1.064037	0.070145	0.267825	1.067786	0.135521	0.998377
-1.13004	0.057988	0.487101	1.162324	0.164356	0.412116	1.108585	0.416382	0.998377
-1.27143	0.405059	0.986494	1.076106	0.388245	0.645992	-1.09325	0.926763	0.998377
-1.13844	0.610844	0.986494	1.04127	0.221891	0.477919	-1.11824	0.970372	0.998377
1.005026	0.017869	0.187623	1.101033	0.122426	0.359133	1.059502	0.231581	0.998377
-1.02603	0.028678	0.267662	1.082315	0.15089	0.412116	1.049215	0.194075	0.998377
-1.01928	0.074342	0.560775	1.098658	0.600844	0.776475	-1.02581	0.57466	0.998377
1.089325	0.000355	0.049247	1.379627	0.047867	0.206194	1.168239	0.261494	0.998377
-1.07988	0.296643	0.986494	1.061977	0.537048	0.717734	-1.03409	0.944272	0.998377
1.048778	0.003517	0.082258	1.12568	0.098166	0.314697	1.062142	0.198756	0.998377
-1.01347	0.007029	0.102728	1.1024	0.163233	0.412116	1.04658	0.199107	0.998377
1.080471	0.005709	0.095917	1.134515	0.060497	0.236359	1.081381	0.820768	0.998377
1.038315	0.002219	0.075188	1.337971	0.661437	0.817069	1.036969	0.06354	0.998377
-1.2823	0.871127	0.986494	-1.02428	0.101153	0.314697	1.265672	0.934898	0.998377
-1.01367	0.08068	0.56476	1.088702	0.875692	0.960733	-1.00705	0.662543	0.998377
1.016711	0.003917	0.082258	1.116485	0.148987	0.412116	1.05265	0.37383	0.998377
1.017282	0.244048	0.986494	1.083852	0.027194	0.152284	1.158029	0.490872	0.998377
2.366677	0.849222	0.986494	1.085536	0.182351	0.437411	1.741783	0.583569	0.998377
1.774786	0.81228	0.986494	1.112364	0.965273	0.984501	1.018683	0.836431	0.998377
1.150642	0.979422	0.999821	1.007992	0.295512	0.533829	-1.36251	0.874131	0.998377
1.181702	0.852416	0.986494	-1.04294	0.388364	0.645992	-1.18869	0.838905	0.998377
1.599656	0.988811	0.999821	-1.00711	0.96042	0.984501	-1.02012	0.853015	0.998377
1.243263	0.999821	0.999821	-1.00007	0.506253	0.717734	-1.23248	0.802817	0.998377
1.199372	0.953061	0.986494	1.019786	0.44262	0.682203	-1.27601	0.982376	0.998377
1.112311	0.807065	0.986494	1.074047	0.220101	0.477919	-1.41168	0.923286	0.998377
1.088454	0.852388	0.986494	-1.06131	0.517981	0.717734	-1.21751	0.81281	0.998377
1.15151	0.949203	0.986494	1.023175	0.417586	0.668094	-1.32075	0.899462	0.998377
1.075247	0.804414	0.986494	1.06826	0.156481	0.412116	-1.44032	0.787771	0.998377
1.087088	0.864962	0.986494	1.026631	0.085997	0.294848	-1.29504	0.415724	0.998377
1.089834	0.702861	0.986494	1.060314	0.001944	0.065328	-1.63709	0.40702	0.998377
-1.04345	0.775959	0.986494	-1.03189	0.271015	0.511579	-1.12782	0.082792	0.998377
1.197404	0.797782	0.986494	1.064054	0.044374	0.199243	-1.61504	0.967293	0.998377
1.052605	0.927443	0.986494	-1.01612	0.028247	0.153078	-1.46536	0.904231	0.998377
1.210128	0.791904	0.986494	1.079545	0.009568	0.120731	-2.13459	0.935606	0.998377
1.135171	0.915046	0.986494	1.019876	0.029673	0.155783	-1.48801	0.874295	0.998377
1.240295	0.808388	0.986494	1.072914	0.01897	0.12748	-1.97222	0.920079	0.998377
1.248731	0.701067	0.986494	1.115563	0.016216	0.12748	-1.98246	0.872743	0.998377
1.213277	0.714109	0.986494	1.10641	0.014503	0.121829	-1.96518	0.873001	0.998377
1.292356	0.645141	0.986494	1.138313	0.033283	0.164334	-1.80593	0.92388	0.998377
1.07945	0.791808	0.986494	1.050229	0.000973	0.063787	-1.90178	0.818687	0.998377
1.157328	0.727009	0.986494	1.120503	0.01078	0.120731	-2.30764	0.874924	0.998377
1.146019	0.762218	0.986494	1.065421	0.008133	0.113864	-1.75167	0.997369	0.998377

1.124089	0.720636	0.986494	1.086441	0.011533	0.121097	-1.80153	0.924249	0.998377
1.094974	0.662133	0.986494	1.082823	0.075973	0.277466	-1.37022	0.258267	0.998377
-1.01752	0.78507	0.986494	1.071955	0.013108	0.121829	-1.88561	0.560407	0.998377
-1.10375	0.994581	0.999821	1.001178	0.018324	0.12748	-1.50426	0.840492	0.998377
-1.0236	0.680537	0.986494	1.222536	0.039158	0.182739	-2.6949	0.849062	0.998377
1.156453	0.451896	0.986494	1.152177	0.004003	0.076269	-1.73736	0.809562	0.998377
1.123291	0.664872	0.986494	1.08697	0.045067	0.199243	-1.46094	0.926212	0.998377
1.176159	0.763451	0.986494	1.079134	0.021903	0.14153	-1.78077	0.967422	0.998377
-1.10307	0.691869	0.986494	1.137279	0.017497	0.12748	-2.15898	0.908689	0.998377
1.129829	0.541585	0.986494	1.230519	0.055511	0.22746	-1.8894	0.911595	0.998377
-1.12384	0.887391	0.986494	1.03295	0.005643	0.08618	-1.90648	0.922713	0.998377
1.049087	0.672736	0.986494	1.109702	0.017586	0.12748	-1.79266	0.954037	0.998377
1.218725	0.684097	0.986494	1.074253	0.00176	0.065328	-1.77083	0.745761	0.998377
-1.06603	0.945218	0.986494	-1.01215	0.00454	0.076269	-1.66486	0.533172	0.998377
1.309817	0.521391	0.986494	1.221099	0.153613	0.412116	-1.53419	0.632957	0.998377
-1.0887	0.702165	0.986494	-1.07237	0.034236	0.164334	-1.46514	0.83109	0.998377
1.12944	0.427177	0.986494	1.176628	0.090661	0.301875	-1.39876	0.870644	0.998377
1.190356	0.305703	0.986494	1.18417	0.073756	0.275357	-1.33047	0.549316	0.998377
-1.03777	0.916786	0.986494	1.037776	0.196882	0.451633	-1.55437	0.903777	0.998377
-1.16318	0.374452	0.986494	-1.12115	0.87457	0.960733	-1.01867	0.418274	0.998377
1.243005	0.678661	0.986494	1.071509	0.001139	0.063787	-1.76341	0.784576	0.998377
1.062252	0.434455	0.986494	1.106446	0.003925	0.076269	-1.46292	0.187195	0.998377
1.114419	0.562334	0.986494	1.125259	0.000942	0.063787	-2.02548	0.965854	0.998377

JAK2A - G1	JAK2A - G1	JAK2A - G1	JAK2A - G1	JAK2A - G1	JAK2A - G1	JAK2A - G1	JAK2A - G1	JAK2A - G1
-1.17251	0.431915	0.707182	-1.19064	0.930565	0.947484	-1.02062	0.944582	0.986244
-1.24965	0.04519	0.407806	-1.4003	0.912494	0.943983	-1.01907	0.484334	0.785199
-1.02783	0.684808	0.82303	-1.02118	0.045643	0.112765	1.125439	0.898455	0.984719
-1.06817	0.249945	0.574244	-1.05933	0.282365	0.4198	1.058166	0.86234	0.965821
-1.10139	0.185458	0.540821	-1.22147	0.031337	0.084766	1.425158	0.488348	0.785199
1.010079	0.349807	0.657092	-1.19557	0.367766	0.506432	-1.2001	0.323857	0.647714
-1.05326	0.320434	0.63795	-1.0561	0.112064	0.213941	1.100878	0.959534	0.986244
1.037557	0.067095	0.41024	-1.39036	0.010112	0.039508	-1.65894	0.043171	0.576343
1.242106	0.456547	0.718501	-1.2128	0.296444	0.429333	-1.33424	0.120052	0.580313
-1.07407	0.062665	0.41024	-1.53094	0.005636	0.029006	-2.01104	0.117853	0.580313
1.041252	0.328863	0.63795	-1.24519	0.004435	0.029006	-2.06346	0.249135	0.621396
1.037811	0.319424	0.63795	-1.20941	0.008024	0.034563	-1.76455	0.235818	0.609498
-1.01118	0.019802	0.407806	-1.55024	0.434648	0.566053	-1.16083	0.022831	0.530639
1.05552	0.028935	0.407806	1.190637	0.429369	0.563547	1.06657	0.123137	0.580313
1.008461	0.872829	0.945616	-1.0138	0.235431	0.375135	1.124654	0.796981	0.917846
1.047367	0.333335	0.63795	-1.17713	0.013474	0.048163	-1.58954	0.216722	0.596874
-1.06828	0.408327	0.692918	-1.346	0.058939	0.132023	-2.09422	0.51917	0.785199
-1.01055	0.185405	0.540821	-1.31399	0.006043	0.029006	-1.88452	0.202351	0.596874
1.004442	0.279349	0.594058	-1.2462	0.003382	0.02711	-1.96943	0.269984	0.621396
-1.01095	0.077672	0.434965	-1.43717	0.000456	0.017216	-2.30187	0.086501	0.580313
-1.01918	0.021681	0.407806	-1.27683	0.000683	0.017216	-1.45232	0.031566	0.530639
-1.03306	0.156827	0.497602	-1.53527	0.072657	0.157453	-1.79136	0.189587	0.596874
1.062685	0.355925	0.657092	-1.47	0.178296	0.302563	-1.82404	0.286388	0.621396
-1.13458	0.252941	0.574244	-1.32682	0.054315	0.124999	-1.67551	0.523466	0.785199
1.021585	0.331872	0.63795	-1.45058	0.032787	0.086026	-2.45299	0.305344	0.633306
-1.0038	0.217349	0.540821	-1.54782	0.021089	0.062186	-2.45282	0.221256	0.599533
-1.09268	0.220873	0.540821	-1.25885	0.002089	0.023833	-1.93723	0.447726	0.783298
-1.05165	0.427414	0.707182	-1.12978	0.049211	0.118107	-1.39157	0.639905	0.826954
-1.12812	0.353195	0.657092	-1.29155	0.010669	0.040737	-2.19563	0.621498	0.826954
-1.0354	0.446283	0.718501	-1.10991	0.006702	0.031278	-1.42679	0.604598	0.819133
1.030255	0.206426	0.540821	-1.32242	0.00197	0.023833	-1.92996	0.169185	0.596874
-1.09418	0.12306	0.480794	-1.27955	0.004921	0.029006	-1.65216	0.321392	0.647714
1.003898	0.113547	0.480794	-1.61776	0.001088	0.0203	-2.46654	0.111395	0.580313
-1.19177	0.140225	0.497602	-1.20514	0.222457	0.359354	-1.15007	0.921881	0.984719
-1.05009	0.115942	0.480794	-1.69944	0.004235	0.029006	-2.943	0.151961	0.596874
-1.11888	0.044114	0.407806	-1.47932	0.007754	0.034281	-1.75981	0.143972	0.596874
-1.06974	0.146498	0.497602	-1.57162	0.011643	0.043467	-2.37918	0.21427	0.596874
-1.11215	0.10952	0.480794	-1.59701	0.086556	0.173113	-1.70504	0.211883	0.596874
1.354853	0.068373	0.41024	-1.68023	0.000514	0.017216	-3.12541	0.005548	0.433774
-1.06818	0.104566	0.480794	-1.58029	0.031787	0.084766	-1.92303	0.162151	0.596874
-1.30254	0.035369	0.407806	-1.60697	0.662109	0.777862	1.105731	0.33595	0.661686
-1.06514	0.272234	0.587858	-1.52569	0.0403	0.102583	-2.36392	0.348903	0.666087
-1.0709	0.152003	0.497602	-1.67507	0.022766	0.065943	-2.44842	0.212062	0.596874
-1.04717	0.15965	0.497602	-1.73574	0.065954	0.145792	-2.16996	0.196237	0.596874
-1.00065	0.110252	0.480794	-1.6872	0.015341	0.052598	-2.38351	0.110676	0.580313
-1.18242	0.151629	0.497602	-1.58286	0.080902	0.163754	-1.81921	0.357175	0.674218
-1.08331	0.220317	0.540821	-1.26923	0.003174	0.02711	-1.91754	0.411958	0.760537

-1.02389	0.222835	0.540821	-1.36673	0.001526	0.023607	-2.07039	0.253656	0.621396
-1.17234	0.053232	0.407806	-1.35631	0.623925	0.738165	-1.08264	0.342659	0.661686
-1.11786	0.031812	0.407806	-1.52325	0.018645	0.059102	-1.63789	0.107778	0.580313
-1.01589	0.034235	0.407806	-1.28694	0.00239	0.025098	-1.44935	0.044598	0.576343
1.045811	0.047536	0.407806	-1.32752	0.252538	0.38222	-1.20479	0.026069	0.530639
1.008747	0.193671	0.540821	-1.22609	0.001551	0.023607	-1.76681	0.175876	0.596874
-1.08853	0.032263	0.407806	-1.69809	0.053681	0.124999	-1.6521	0.068836	0.580313
-1.15354	0.049212	0.407806	-1.88943	0.010079	0.039508	-2.47428	0.122059	0.580313
-1.12594	0.121611	0.480794	-1.64302	0.024144	0.06875	-1.90454	0.209738	0.596874
-1.03801	0.149511	0.497602	-1.33261	0.003988	0.029006	-1.9055	0.207796	0.596874
-1.18323	0.205732	0.540821	-1.45012	0.252406	0.38222	-1.42702	0.484188	0.785199
-1.01613	0.630589	0.804095	1.090669	0.691244	0.806452	-1.07894	0.569308	0.787241
-1.0915	0.327965	0.63795	-1.15314	0.15399	0.266705	-1.2491	0.703998	0.838806
-1.14502	0.027806	0.407806	-1.45558	0.525792	0.649507	-1.11654	0.149105	0.596874
-1.06957	0.008399	0.407806	-1.31989	0.009618	0.03941	-1.33449	0.040469	0.576343
-1.00815	0.147034	0.497602	-1.4323	0.006019	0.029006	-2.13696	0.156039	0.596874
1.023271	0.071446	0.413896	-1.79501	0.001686	0.023607	-3.15976	0.061584	0.580313
-1.07786	0.115357	0.480794	-1.66227	0.016122	0.054169	-2.33823	0.176903	0.596874
-1.11892	0.260954	0.576845	-1.26495	0.220336	0.359354	-1.31309	0.554102	0.787241
-1.01839	0.091663	0.480794	-1.75206	0.003445	0.02711	-2.96884	0.102159	0.580313
1.125494	0.041046	0.407806	-1.79951	0.00093	0.019521	-2.93571	0.015677	0.530639
-1.10132	0.035173	0.407806	-1.96327	0.003305	0.02711	-2.8241	0.068195	0.580313
1.037435	0.197573	0.540821	1.096773	0.488345	0.614759	1.053509	0.433449	0.774675
1.05953	0.530039	0.785307	-1.08256	0.40948	0.545973	1.139191	0.294391	0.621396
1.074867	0.599708	0.804095	-1.04654	0.762241	0.858731	1.028156	0.180531	0.596874
1.020942	0.43357	0.707182	1.043739	0.25027	0.38222	1.069396	0.685026	0.832444
-1.11711	0.558552	0.785307	-1.13059	0.584069	0.705925	-1.12951	0.954273	0.986244
-1.012	0.911844	0.945616	-1.01947	0.131136	0.23689	1.32938	0.966323	0.986244
-1.29112	0.053066	0.407806	-1.39979	0.073103	0.157453	1.389417	0.63122	0.826954
1.006503	0.035444	0.407806	-1.31116	0.553235	0.673504	1.081154	0.031586	0.530639
1.057543	0.194031	0.540821	-1.22425	0.980549	0.986421	-1.00398	0.100474	0.580313
-1.08084	0.067538	0.41024	-1.23923	0.936404	0.947685	-1.00968	0.235459	0.609498
-1.09272	0.26009	0.576845	-1.20754	0.141739	0.250655	1.300975	0.547429	0.787241
1.034997	0.042469	0.407806	1.13832	0.30032	0.431228	1.070591	0.12966	0.583378
1.033076	0.461097	0.718501	1.051505	0.355083	0.497116	1.072425	0.797652	0.917846
-1.06308	0.566524	0.785307	-1.07695	0.074604	0.158653	1.28537	0.919962	0.984719
1.03466	0.827064	0.926947	1.017291	0.221883	0.359354	1.10851	0.829194	0.947651
1.119702	0.953209	0.958332	1.010762	0.766724	0.858731	1.059129	0.575815	0.787241
-1.03235	0.725986	0.846984	-1.0336	0.620681	0.738165	1.051311	0.989524	0.989524
1.049625	0.639794	0.804095	-1.01675	0.756579	0.858731	1.011727	0.074533	0.580313
1.026778	0.869624	0.945616	1.007415	0.117263	0.221351	1.084841	0.676745	0.829878
1.040955	0.548071	0.785307	-1.02105	0.840361	0.916758	1.007417	0.086031	0.580313
1.030563	0.641362	0.804095	1.015465	0.480338	0.611134	1.025035	0.654158	0.829878
1.050556	0.272934	0.587858	1.042847	0.910294	0.943983	-1.00453	0.845772	0.960066
1.033877	0.518785	0.785307	1.019678	0.836402	0.916758	1.006614	0.64641	0.828984
1.01249	0.621548	0.804095	1.015944	0.383277	0.5235	1.03022	0.915177	0.984719
1.03613	0.407423	0.692918	1.025599	0.54124	0.66371	1.01991	0.736419	0.863636
1.053458	0.535985	0.785307	1.027312	0.77274	0.859737	-1.01339	0.563589	0.787241
1.047849	0.745445	0.863688	1.010891	0.908237	0.943983	1.004084	0.286366	0.621396

1.075596	0.461893	0.718501	1.038672	0.757257	0.858731	1.016981	0.497862	0.785199
1.045578	0.619671	0.804095	1.018632	0.476341	0.610881	1.028563	0.483653	0.785199
1.031584	0.116456	0.480794	-1.06592	0.078534	0.162885	1.079315	0.022822	0.530639
1.042319	0.896725	0.945616	-1.00383	0.490344	0.614759	-1.02186	0.131955	0.583378
1.038731	0.596517	0.804095	-1.01793	0.893426	0.943983	-1.00477	0.103998	0.580313
1.000721	0.557794	0.785307	1.028676	0.991866	0.991866	1.00052	0.56782	0.787241
1.031211	0.246033	0.574077	-1.05588	0.005391	0.029006	1.184275	0.078432	0.580313
1.051772	0.188237	0.540821	-1.04529	0.219416	0.359354	1.04473	0.007438	0.433774
1.057751	0.603658	0.804095	-1.03638	0.00355	0.02711	1.258366	0.187824	0.596874
1.009391	0.009692	0.407806	-1.27849	0.919226	0.943983	1.011111	0.007746	0.433774
-1.00334	0.018046	0.407806	-1.22415	0.352805	0.497116	-1.08913	0.019665	0.530639
1.042723	0.659817	0.812936	1.015337	0.899217	0.943983	1.004648	0.443121	0.783298
1.041653	0.824871	0.926947	1.006874	0.78405	0.866581	1.009042	0.27764	0.621396
1.026115	0.910866	0.945616	-1.00514	0.46672	0.603145	-1.03617	0.501579	0.785199
1.084581	0.658854	0.812936	-1.03212	0.921507	0.943983	1.0075	0.122558	0.580313
-1.00357	0.053403	0.407806	-1.10738	0.602917	0.723501	-1.02863	0.061727	0.580313
1.044701	0.212231	0.540821	1.043325	0.880565	0.943983	-1.00536	0.968632	0.986244
1.040213	0.954488	0.958332	-1.00173	0.701502	0.807208	1.012388	0.18071	0.596874
1.008661	0.398173	0.692918	1.032884	0.700197	0.807208	1.015682	0.534245	0.787241
1.161123	0.902795	0.945616	-1.00958	0.238925	0.375135	-1.10372	0.049294	0.580313
-1.01086	0.476712	0.734749	1.09913	0.000239	0.017216	1.795206	0.428335	0.773767
1.018673	0.565205	0.785307	-1.02471	0.339056	0.482723	-1.04422	0.315016	0.645399
1.029568	0.868924	0.945616	-1.00529	0.910656	0.943983	-1.00393	0.293619	0.621396
1.04008	0.836312	0.930467	-1.01151	0.238683	0.375135	1.079117	0.37233	0.695016
1.236371	0.827631	0.926947	1.087723	0.358775	0.498133	-1.46026	0.740259	0.863636
-1.08632	0.909418	0.945616	-1.04667	0.510752	0.635602	-1.32408	0.926105	0.984719
-1.04471	0.895556	0.945616	-1.03691	0.121245	0.223837	-1.58996	0.97834	0.988341
-1.04166	0.816855	0.926947	1.049829	0.406218	0.545956	-1.17433	0.664048	0.829878
1.076255	0.634936	0.804095	-1.18189	0.294164	0.429333	-1.46242	0.510219	0.785199
-1.07657	0.934544	0.958332	1.024551	0.423036	0.559607	-1.28712	0.740155	0.863636
-1.0066	0.863293	0.945616	-1.05261	0.145242	0.254173	-1.59826	0.880679	0.979828
1.025501	0.68716	0.82303	-1.11122	0.057611	0.130792	-1.72332	0.618143	0.826954
-1.07009	0.766945	0.882512	-1.08851	0.20847	0.350229	-1.47256	0.952407	0.986244
1.04148	0.958332	0.958332	-1.01695	0.110447	0.213276	-1.74607	0.858286	0.965821
1.066317	0.70979	0.83388	-1.09288	0.048964	0.118107	-1.67496	0.522427	0.785199
-1.1198	0.943202	0.958332	-1.0099	0.250069	0.38222	-1.18606	0.45701	0.783447
-1.12122	0.334164	0.63795	-1.1429	0.005435	0.029006	-1.54408	0.888965	0.98254
-1.19307	0.570283	0.785307	-1.06164	0.285678	0.421	1.115878	0.230896	0.609498
-1.00892	0.66293	0.812936	-1.09919	0.014217	0.049761	-1.81373	0.692799	0.832444
-1.01908	0.886847	0.945616	-1.02261	0.005715	0.029006	-1.63936	0.982458	0.988341
1.021173	0.382968	0.68817	-1.25584	0.002128	0.023833	-2.51555	0.341384	0.661686
-1.02645	0.955231	0.958332	-1.00931	0.025759	0.07119	-1.50455	0.918684	0.984719
1.026374	0.62967	0.804095	-1.13356	0.005033	0.029006	-2.2939	0.560726	0.787241
1.041611	0.689537	0.82303	-1.10716	0.005252	0.029006	-2.24736	0.576373	0.787241
1.040213	0.626031	0.804095	-1.12798	0.007232	0.032836	-2.11916	0.518404	0.785199
-1.02429	0.596441	0.804095	-1.14261	0.018067	0.058369	-1.94063	0.663872	0.829878
-1.03879	0.41468	0.696663	-1.1459	0.000644	0.017216	-1.95409	0.555577	0.787241
1.046911	0.368004	0.672008	-1.30221	0.00492	0.029006	-2.54632	0.292055	0.621396
-1.00062	0.691281	0.82303	-1.07728	0.020098	0.062186	-1.62421	0.693703	0.832444

1.01989	0.527789	0.785307	-1.14025	0.01645	0.05419	-1.74312	0.468273	0.785199
-1.20437	0.225342	0.540821	-1.22114	0.887601	0.943983	-1.02468	0.932218	0.984985
-1.14225	0.061188	0.41024	-1.55309	0.045025	0.112765	-1.65257	0.184286	0.596874
-1.03171	0.199955	0.540821	-1.22347	0.049951	0.118193	-1.39642	0.276645	0.621396
-1.08651	0.080789	0.437825	-2.18694	0.033284	0.086026	-2.78928	0.116548	0.580313
1.041229	0.385048	0.68817	-1.15783	0.003145	0.02711	-1.76683	0.269837	0.621396
-1.01605	0.399406	0.692918	-1.15695	0.080569	0.163754	-1.38764	0.452261	0.783298
1.00928	0.540969	0.785307	-1.14882	0.009531	0.03941	-1.93811	0.514562	0.785199
1.033813	0.153092	0.497602	-1.52495	0.025849	0.07119	-2.04879	0.124353	0.580313
1.034209	0.23001	0.544248	-1.44543	0.012575	0.045928	-2.33794	0.191303	0.596874
-1.02006	0.120342	0.480794	-1.38416	0.077308	0.162347	-1.48394	0.143709	0.596874
1.012765	0.322556	0.63795	-1.24562	0.021099	0.062186	-1.75997	0.295903	0.621396
1.052348	0.457907	0.718501	-1.12444	0.000717	0.017216	-1.87378	0.289287	0.621396
-1.10327	0.159944	0.497602	-1.25213	0.124221	0.226838	-1.2993	0.423282	0.772949
-1.14208	0.129673	0.495114	-1.53661	0.091711	0.181264	-1.66468	0.290012	0.621396
-1.03544	0.528787	0.785307	-1.10869	0.1199	0.223813	-1.31686	0.675892	0.829878
-1.03012	0.407224	0.692918	-1.16408	0.176098	0.301883	-1.30448	0.503891	0.785199
-1.09181	0.287746	0.604266	-1.17004	0.277428	0.416142	-1.1856	0.636665	0.826954
-1.03912	0.555339	0.785307	-1.20657	0.401945	0.544571	-1.32838	0.638502	0.826954
-1.09077	0.695657	0.82303	-1.04367	0.093132	0.181933	1.229663	0.673146	0.829878
-1.04157	0.183879	0.540821	-1.22269	0.020946	0.062186	-1.46661	0.286494	0.621396
-1.16679	0.058598	0.41024	-1.25227	0.139687	0.249653	-1.20197	0.54047	0.787241
1.007806	0.094753	0.480794	-1.36522	0.000686	0.017216	-2.07236	0.087181	0.580313

JAK2A - Gf	JAK2A - Ve	JAK2A - Ve	JAK2A - Ve	JAK2A - Ve	JAK2A - Ve	JAK2A - Ve	JAK2A - Ve	JAK2A - Ve
-1.01547	0.145367	0.34612	-1.41571	0.068655	0.851606	-1.51339	0.659828	0.842885
-1.12055	0.266665	0.476593	-1.21294	0.01456	0.64007	-1.51932	0.995777	0.995777
1.006511	0.365528	0.54854	-1.05566	0.032478	0.779464	-1.12838	0.13751	0.618466
1.008343	0.157793	0.34612	-1.0836	0.016127	0.64007	-1.13905	0.211982	0.618466
-1.10903	0.431723	0.594504	1.132806	0.086338	0.851606	-1.29948	0.241343	0.618466
-1.20762	0.188388	0.390731	-1.30818	0.106451	0.851606	-1.36801	0.262241	0.618466
-1.0027	0.236695	0.449862	-1.07766	0.017452	0.64007	-1.15299	0.157617	0.618466
-1.44258	0.438236	0.598566	-1.15523	0.453064	0.983907	-1.14069	0.467165	0.714789
-1.50642	0.366957	0.54854	1.282157	0.935206	0.983907	-1.02118	0.856232	0.924011
-1.42536	0.290965	0.514549	-1.28502	0.762601	0.983907	-1.0693	0.193721	0.618466
-1.29655	0.110575	0.300122	-1.4706	0.800685	0.983907	-1.05785	0.145053	0.618466
-1.25513	0.08234	0.273903	-1.43115	0.788982	0.983907	-1.05199	0.147412	0.618466
-1.5331	0.082581	0.273903	1.403177	0.522213	0.983907	-1.12183	0.351486	0.653688
1.128011	0.976275	0.984707	-1.00241	0.233497	0.939037	-1.09666	0.015682	0.439091
-1.02238	0.456843	0.609124	1.075087	0.68858	0.983907	-1.03534	0.302535	0.651614
-1.23288	0.230516	0.445134	-1.24031	0.702339	0.983907	-1.06605	0.29231	0.646158
-1.25997	0.381859	0.553037	-1.39593	0.710953	0.983907	-1.14169	0.354081	0.653688
-1.30027	0.142424	0.34612	-1.37985	0.489742	0.983907	-1.15117	0.210208	0.618466
-1.25173	0.070137	0.273455	-1.48953	0.648742	0.983907	-1.09622	0.110075	0.618466
-1.42161	0.045117	0.236282	-1.55346	0.522628	0.983907	-1.13678	0.093504	0.618466
-1.25281	0.048264	0.236282	-1.23201	0.08694	0.851606	-1.18789	0.989538	0.995463
-1.48613	0.932964	0.949927	-1.02688	0.457998	0.983907	-1.24827	0.787243	0.907617
-1.56215	0.90086	0.940028	1.05625	0.636022	0.983907	-1.21699	0.927073	0.96738
-1.16944	0.588346	0.721475	-1.15107	0.234759	0.939037	-1.34204	0.918983	0.966058
-1.48189	0.452066	0.607576	-1.35621	0.619065	0.983907	-1.2085	0.461109	0.714789
-1.54196	0.541526	0.684033	-1.25473	0.76302	0.983907	-1.11114	0.538154	0.786173
-1.15207	0.048962	0.236282	-1.49388	0.218869	0.939037	-1.26014	0.214313	0.618466
-1.0743	0.259648	0.473817	-1.20311	0.326379	0.983907	-1.16342	0.783099	0.907617
-1.14488	0.143508	0.34612	-1.54127	0.350597	0.983907	-1.29337	0.193806	0.618466
-1.07196	0.102099	0.300122	-1.24283	0.678669	0.983907	-1.05671	0.145599	0.618466
-1.36243	0.106153	0.300122	-1.38422	0.492046	0.983907	-1.15105	0.168443	0.618466
-1.16942	0.373201	0.54854	-1.16046	0.196649	0.939037	-1.2276	0.409236	0.695906
-1.62407	0.262292	0.473817	-1.32055	0.626296	0.983907	-1.13007	0.115944	0.618466
-1.01122	0.930692	0.949927	1.012651	0.153591	0.922415	-1.19685	0.721215	0.871684
-1.61837	0.313515	0.517358	-1.42737	0.80869	0.983907	-1.08317	0.193301	0.618466
-1.32213	0.147126	0.34612	-1.3415	0.101608	0.851606	-1.3695	0.579675	0.818365
-1.46915	0.354353	0.54854	-1.3531	0.502005	0.983907	-1.22862	0.464468	0.714789
-1.43597	0.448458	0.607576	-1.25979	0.292038	0.983907	-1.35547	0.936074	0.970743
-2.27647	0.307108	0.517358	-1.35263	0.517564	0.983907	-1.19652	0.610097	0.841398
-1.47942	0.565991	0.704345	-1.183	0.378284	0.983907	-1.27661	0.85801	0.924011
-1.23373	0.741428	0.847346	1.078781	0.01905	0.64007	-1.70551	0.069734	0.618466
-1.43238	0.404251	0.575544	-1.40327	0.613715	0.983907	-1.21233	0.432502	0.712356
-1.56417	0.661279	0.771492	-1.17885	0.679684	0.983907	-1.15738	0.669227	0.842885
-1.65755	0.60015	0.729942	-1.23944	0.438899	0.983907	-1.3495	0.616294	0.841767
-1.6861	0.247214	0.456395	-1.48816	0.157134	0.922415	-1.58572	0.79884	0.91296
-1.33867	0.890015	0.934516	1.047194	0.639551	0.983907	-1.15894	0.952217	0.981426
-1.17162	0.044378	0.236282	-1.529	0.195749	0.939037	-1.28666	0.192102	0.618466

-1.33484	0.152349	0.34612	-1.37716	0.615172	0.983907	-1.12286	0.133063	0.618466
-1.15692	0.820439	0.88355	1.037378	0.27981	0.983907	-1.18106	0.751914	0.893617
-1.36265	0.134886	0.339557	-1.35545	0.08127	0.851606	-1.4005	0.788762	0.907617
-1.26681	0.090203	0.291425	-1.21243	0.232083	0.939037	-1.1394	0.987028	0.995463
-1.38833	0.765621	0.848093	-1.05513	0.014398	0.64007	-1.45057	0.474822	0.714789
-1.23681	0.036085	0.216508	-1.42964	0.373358	0.983907	-1.1485	0.488191	0.725807
-1.55998	0.42249	0.591485	-1.22495	0.105017	0.851606	-1.48242	0.700353	0.869766
-1.63794	0.21676	0.428419	-1.51407	0.760925	0.983907	-1.09975	0.387551	0.685353
-1.45925	0.60394	0.729942	-1.17565	0.370061	0.983907	-1.28755	0.816884	0.92105
-1.28381	0.156105	0.34612	-1.34921	0.507052	0.983907	-1.13907	0.214926	0.618466
-1.22556	0.864611	0.919333	1.053756	0.434463	0.983907	-1.25544	0.475814	0.714789
1.108259	0.809027	0.87688	-1.04727	0.80433	0.983907	-1.04566	0.71795	0.871684
-1.05647	0.984707	0.984707	-1.00294	0.221902	0.939037	-1.19577	0.571625	0.813839
-1.27122	0.517315	0.66853	-1.11909	0.135306	0.922415	-1.28244	0.425904	0.708435
-1.23403	0.098951	0.300122	-1.19384	0.023128	0.647592	-1.26517	0.138324	0.618466
-1.42072	0.20155	0.4031	-1.39679	0.491438	0.983907	-1.18288	0.131249	0.618466
-1.83678	0.371366	0.54854	-1.35102	0.711328	0.983907	-1.12381	0.222382	0.618466
-1.54219	0.363728	0.54854	-1.35833	0.463877	0.983907	-1.26142	0.567338	0.813839
-1.13051	0.367745	0.54854	1.220079	0.93039	0.983907	1.01822	0.530152	0.781277
-1.72041	0.315177	0.517358	-1.41665	0.773415	0.983907	-1.09783	0.154536	0.618466
-2.02534	0.113232	0.300122	-1.60914	0.460224	0.983907	-1.22801	0.238751	0.618466
-1.78265	0.491947	0.645681	-1.25244	0.790956	0.983907	-1.08498	0.235476	0.618466
1.057197	0.644597	0.757289	1.035222	0.077554	0.851606	1.136826	0.835924	0.923917
-1.147	0.05158	0.236282	1.377442	0.644554	0.983907	-1.05925	0.047406	0.618466
-1.12489	0.863796	0.919333	1.01586	0.95455	0.983907	-1.00494	0.651698	0.842885
1.022329	0.375489	0.54854	1.052815	0.307429	0.983907	1.057611	0.444373	0.714789
-1.01207	0.297829	0.517358	1.262715	0.335394	0.983907	1.225318	0.654966	0.842885
-1.00738	0.365866	0.54854	1.18326	0.893356	0.983907	-1.02363	0.828248	0.923917
-1.08417	0.055812	0.240419	1.422497	0.211348	0.939037	1.237374	0.856731	0.924011
-1.31968	0.313629	0.517358	1.142718	0.420242	0.983907	-1.10548	0.268216	0.618466
-1.29469	0.687324	0.790893	1.067787	0.532879	0.983907	-1.10077	0.276101	0.618466
-1.14654	0.980293	0.984707	1.002986	0.400608	0.983907	-1.10105	0.461864	0.714789
-1.10508	0.045215	0.236282	1.440215	0.972006	0.983907	1.005826	0.729764	0.875717
1.099829	0.609088	0.730905	1.033995	0.365853	0.983907	1.057615	0.410087	0.695906
1.017839	0.426442	0.592084	1.058352	0.318495	0.983907	1.069997	0.958302	0.981676
-1.01304	0.507087	0.660392	1.095374	0.138986	0.922415	1.214875	0.405095	0.695906
-1.01707	0.474154	0.627228	1.06165	0.731295	0.983907	-1.02733	0.375914	0.679071
-1.10778	0.31719	0.517358	1.215684	0.489364	0.983907	1.135033	0.476526	0.714789
-1.00122	0.777418	0.848093	1.027654	0.720307	0.983907	1.033216	0.3431	0.653688
-1.06721	0.004328	0.062906	-1.12258	0.388344	0.983907	-1.03125	0.081605	0.618466
-1.01922	0.916968	0.945095	1.005147	0.587218	0.983907	-1.0252	0.032873	0.613636
-1.06287	0.004097	0.062906	-1.12034	0.094823	0.851606	-1.06104	0.321706	0.653688
-1.01487	0.0082	0.091844	-1.10337	0.297456	0.983907	-1.03521	0.310202	0.653688
-1.00739	0.01774	0.139006	-1.10545	0.100827	0.851606	-1.06573	0.348425	0.653688
-1.01393	0.000789	0.026672	-1.12641	0.078527	0.851606	-1.05596	0.405197	0.695906
1.003412	0.001319	0.027698	-1.12743	0.162351	0.922415	-1.04652	0.332304	0.653688
-1.01027	0.000949	0.026672	-1.12494	0.063548	0.851606	-1.05978	0.249702	0.618466
-1.02545	0.025835	0.180842	-1.11333	0.249299	0.951868	-1.05189	0.352184	0.653688
-1.03656	0.000953	0.026672	-1.13813	0.127574	0.922415	-1.05325	0.218169	0.618466

-1.03555	0.127365	0.329189	-1.08846	0.570139	0.983907	-1.02966	0.371932	0.679071
-1.02645	0.113135	0.300122	-1.06588	0.556857	0.983907	-1.02211	0.346389	0.653688
-1.09959	0.107222	0.300122	-1.07204	0.930411	0.983907	-1.00348	0.064857	0.618466
-1.04631	0.001267	0.027698	-1.11727	0.28805	0.983907	-1.0321	0.718945	0.871684
-1.05736	0.000666	0.026672	-1.14424	0.164717	0.922415	-1.04849	0.254071	0.618466
1.027935	0.024581	0.179547	-1.12762	0.498164	0.983907	-1.03325	0.804441	0.913149
-1.08883	0.752552	0.848093	-1.01614	0.152412	0.922415	-1.07033	0.008543	0.427761
-1.09941	0.160699	0.34612	-1.05147	0.119423	0.911958	-1.05417	0.074084	0.618466
-1.09624	0.74934	0.848093	1.023567	0.708242	0.983907	-1.02606	0.01001	0.427761
-1.29049	0.537429	0.684001	-1.05214	0.965707	0.983907	-1.00342	0.760638	0.893617
-1.22007	0.342571	0.545342	-1.07589	0.823152	0.983907	-1.01672	0.834953	0.923917
-1.02697	0.009647	0.101297	-1.10607	0.242691	0.948187	-1.04168	0.326153	0.653688
-1.03454	0.007022	0.090742	-1.09927	0.294031	0.983907	-1.03334	0.599946	0.839924
-1.03139	0.028677	0.185299	-1.11748	0.883234	0.983907	1.006752	0.626171	0.842885
-1.11942	0.018203	0.139006	-1.20742	0.314836	0.983907	-1.07521	0.010594	0.427761
-1.10343	0.104282	0.300122	-1.09424	0.648822	0.983907	-1.02355	0.902245	0.96546
-1.00132	0.000391	0.026672	-1.15245	0.05308	0.851606	-1.0694	0.226249	0.618466
-1.04201	0.004493	0.062906	-1.10323	0.184003	0.936745	-1.04168	0.217815	0.618466
1.024015	0.010591	0.10466	-1.11579	0.174155	0.929685	-1.05399	0.094502	0.618466
-1.17224	0.000161	0.026672	-1.42937	0.043028	0.851606	-1.1781	0.242962	0.618466
1.111066	0.08109	0.273903	1.285995	0.978272	0.983907	-1.00361	0.107461	0.618466
-1.04385	0.011878	0.110864	-1.12718	0.623945	0.983907	-1.02101	0.756346	0.893617
-1.03502	0.003009	0.056174	-1.11391	0.177083	0.929685	-1.04577	0.181148	0.618466
-1.05205	0.878955	0.928707	1.009479	0.343102	0.983907	-1.05555	0.02802	0.613636
-1.13666	0.91254	0.945095	1.046001	0.216344	0.939037	-1.62241	0.143363	0.618466
1.037881	0.679558	0.78735	-1.19231	0.419979	0.983907	-1.38429	0.54875	0.794742
1.007522	0.163429	0.347544	-1.51482	0.781955	0.983907	-1.07945	0.263804	0.618466
1.093565	0.576829	0.712554	-1.1396	0.690871	0.983907	-1.09367	0.704097	0.869766
-1.27201	0.772395	0.848093	1.139164	0.564267	0.983907	-1.23009	0.415108	0.697381
1.103002	0.546486	0.685147	-1.20865	0.847323	0.983907	-1.05852	0.672301	0.842885
-1.04571	0.420256	0.591485	-1.29176	0.983907	0.983907	1.006023	0.445071	0.714789
-1.13956	0.246685	0.456395	-1.38435	0.838311	0.983907	1.054827	0.27328	0.618466
-1.01721	0.39156	0.56224	-1.299	0.900054	0.983907	-1.03657	0.350877	0.653688
-1.05913	0.305917	0.517358	-1.4228	0.927854	0.983907	1.029554	0.297632	0.64938
-1.16535	0.23832	0.449862	-1.35245	0.81981	0.983907	1.055824	0.256571	0.618466
1.10883	0.221185	0.432083	-1.19935	0.800524	0.983907	1.035556	0.200555	0.618466
-1.01933	0.017259	0.139006	-1.44042	0.867537	0.983907	1.023143	0.03017	0.613636
1.123798	0.625263	0.744994	1.051994	0.486245	0.983907	1.071329	0.638948	0.842885
-1.08947	0.077364	0.273903	-1.51819	0.904853	0.983907	-1.02623	0.15894	0.618466
-1.00346	0.032345	0.201257	-1.45054	0.742553	0.983907	1.053012	0.012731	0.427761
-1.28243	0.028163	0.185299	-1.87959	0.782891	0.983907	-1.07412	0.087296	0.618466
1.016989	0.073247	0.273455	-1.38103	0.977802	0.983907	-1.0046	0.096237	0.618466
-1.16345	0.049271	0.236282	-1.75168	0.918087	0.983907	-1.02704	0.100303	0.618466
-1.15323	0.052038	0.236282	-1.72085	0.96364	0.983907	1.011668	0.107312	0.618466
-1.17334	0.072394	0.273455	-1.62252	0.951554	0.983907	1.015095	0.136063	0.618466
-1.11552	0.107747	0.300122	-1.55061	0.962287	0.983907	-1.01195	0.269763	0.618466
-1.1031	0.007608	0.091292	-1.65174	0.797886	0.983907	1.043442	0.008326	0.427761
-1.3633	0.053677	0.237308	-1.85257	0.933859	0.983907	-1.02446	0.129137	0.618466
-1.07661	0.156508	0.34612	-1.33175	0.782181	0.983907	1.053149	0.173344	0.618466

-1.16293	0.114332	0.300122	-1.426	0.939215	0.983907	1.015921	0.19699	0.618466
-1.01393	0.775929	0.848093	-1.05035	0.759902	0.983907	-1.05099	0.642622	0.842885
-1.35968	0.165727	0.348027	-1.40595	0.796461	0.983907	-1.06054	0.3824	0.683437
-1.18587	0.33162	0.535695	-1.1747	0.510971	0.983907	1.107721	0.118943	0.618466
-2.01282	0.158956	0.34612	-1.94062	0.796407	0.983907	-1.11908	0.451833	0.714789
-1.20557	0.058264	0.24471	-1.41595	0.854525	0.983907	1.031208	0.189493	0.618466
-1.13868	0.1923	0.390985	-1.27305	0.656655	0.983907	-1.07956	0.655547	0.842885
-1.15948	0.073241	0.273455	-1.55659	0.947655	0.983907	-1.01496	0.150452	0.618466
-1.57651	0.100946	0.300122	-1.67685	0.922665	0.983907	-1.02854	0.247259	0.618466
-1.49488	0.082954	0.273903	-1.77286	0.894969	0.983907	-1.04081	0.315959	0.653688
-1.35694	0.52662	0.67536	-1.14797	0.623758	0.983907	1.105884	0.346168	0.653688
-1.26152	0.083149	0.273903	-1.5154	0.904068	0.983907	-1.02688	0.2281	0.618466
-1.1833	0.060871	0.249421	-1.38097	0.945842	0.983907	1.010737	0.124353	0.618466
-1.13493	0.315728	0.517358	-1.18384	0.907007	0.983907	1.018529	0.237989	0.618466
-1.34546	0.193165	0.390985	-1.47565	0.378234	0.983907	-1.27933	0.846575	0.924011
-1.07074	0.632751	0.748607	-1.08643	0.397121	0.983907	1.149256	0.099997	0.618466
-1.13004	0.106533	0.300122	-1.37625	0.461241	0.983907	-1.14441	0.910084	0.966058
-1.07166	0.135419	0.339557	-1.26656	0.340683	0.983907	-1.15081	0.637566	0.842885
-1.16114	0.763302	0.848093	-1.10679	0.735705	0.983907	1.113206	0.611015	0.841398
1.045131	0.040758	0.236117	1.273163	0.256344	0.957016	1.122673	0.920056	0.966058
-1.1739	0.344085	0.545342	-1.16256	0.608379	0.983907	-1.07947	0.974286	0.992
-1.07326	0.150475	0.34612	-1.1959	0.828936	0.983907	-1.0252	0.665569	0.842885
-1.37588	0.016999	0.139006	-1.6235	0.719473	0.983907	-1.06749	0.125843	0.618466

JAK2A - Ve	Transformation	
1.108771	LOG	
-1.00091	LOG	
1.089317	NO	
1.069049	NO	
1.205751	LOG	
1.256055	LOG	
1.087998	NO	
-1.14483	LOG	
1.050807	LOG	
-1.36377	LOG	
-1.42028	LOG	
-1.34504	LOG	
1.195149	LOG	
1.2297	LOG	
1.103642	NO	
-1.20753	LOG	
-1.42445	LOG	
-1.31466	LOG	
-1.41795	LOG	
-1.44003	LOG	
1.001253	NO	
-1.0889	LOG	
1.041024	LOG	
1.026724	LOG	
-1.34793	LOG	
-1.25712	LOG	
-1.28116	LOG	
-1.04568	LOG	
-1.46621	LOG	
-1.20352	NO	
-1.28266	NO	
-1.14771	LOG	
-1.40224	NO	
1.044792	NO	
-1.58745	LOG	
-1.11674	LOG	
-1.26888	LOG	
1.024609	LOG	
-1.16154	LOG	
-1.05363	LOG	
1.535904	LOG	
-1.37522	LOG	
-1.174	LOG	
-1.22773	LOG	
-1.0904	LOG	
-1.02018	LOG	
-1.30944	LOG	

-1.35319	NO	
1.052459	LOG	
-1.05489	LOG	
1.001746	NO	
1.100673	NO	
-1.12079	LOG	
1.101764	LOG	
-1.33391	LOG	
-1.06078	NO	
-1.29792	LOG	
1.245981	LOG	
1.071521	LOG	
1.090773	LOG	
1.148699	LOG	
1.171612	LOG	
-1.48772	LOG	
-1.51177	LOG	
-1.21166	LOG	
1.148108	LOG	
-1.64592	LOG	
-1.41939	LOG	
-1.47981	LOG	
1.015639	LOG	
1.358369	NO	
-1.04234	LOG	
1.045333	LOG	
-1.10442	LOG	
1.040905	LOG	
-1.0327	LOG	
1.158204	LOG	
1.196189	LOG	
1.093351	LOG	
1.062598	LOG	
1.055542	LOG	
1.003871	NO	
-1.12141	LOG	
1.077014	LOG	
1.148413	LOG	
1.103683	NO	
1.069595	LOG	
1.11928	NO	
1.037345	LOG	
1.036373	LOG	
1.038675	LOG	
1.027092	LOG	
1.033715	LOG	
1.038179	LOG	
1.044097	LOG	
1.045131	LOG	

1.050171	LOG	
1.038071	LOG	
1.083648	LOG	
1.011312	LOG	
1.041844	LOG	
-1.01272	LOG	
1.154739	NO	
1.066767	LOG	
1.220726	LOG	
1.026273	NO	
-1.01626	NO	
1.036932	LOG	
1.017408	LOG	
-1.024	LOG	
1.228557	LOG	
-1.00667	LOG	
1.044565	LOG	
1.040898	LOG	
1.071678	LOG	
1.102771	LOG	
1.260044	LOG	
-1.01404	LOG	
1.048195	NO	
1.154908	NO	
1.842205	LOG	
1.291467	LOG	
-1.3922	LOG	
-1.08675	NO	
1.391381	NO	
-1.14191	LOG	
-1.27433	LOG	
-1.35958	LOG	
-1.33	LOG	
-1.43167	LOG	
-1.33671	LOG	
-1.20978	LOG	
-1.38992	LOG	
-1.05086	NO	
-1.39033	LOG	
-1.55207	LOG	
-1.62095	LOG	
-1.34791	LOG	
-1.58965	LOG	
-1.56058	LOG	
-1.48861	LOG	
-1.34612	LOG	
-1.64106	LOG	
-1.61386	LOG	
-1.31641	LOG	

-1.33344	LOG	
1.083484	LOG	
-1.23671	LOG	
-1.29971	LOG	
-1.41846	LOG	
-1.26728	LOG	
-1.08488	LOG	
-1.42119	LOG	
-1.43352	LOG	
-1.38425	LOG	
-1.22902	LOG	
-1.32984	LOG	
-1.29932	LOG	
-1.22042	LOG	
1.058646	LOG	
-1.33896	LOG	
-1.02206	LOG	
1.075952	LOG	
-1.18723	LOG	
1.011503	NO	
-1.0051	LOG	
-1.05429	LOG	
-1.35156	LOG	