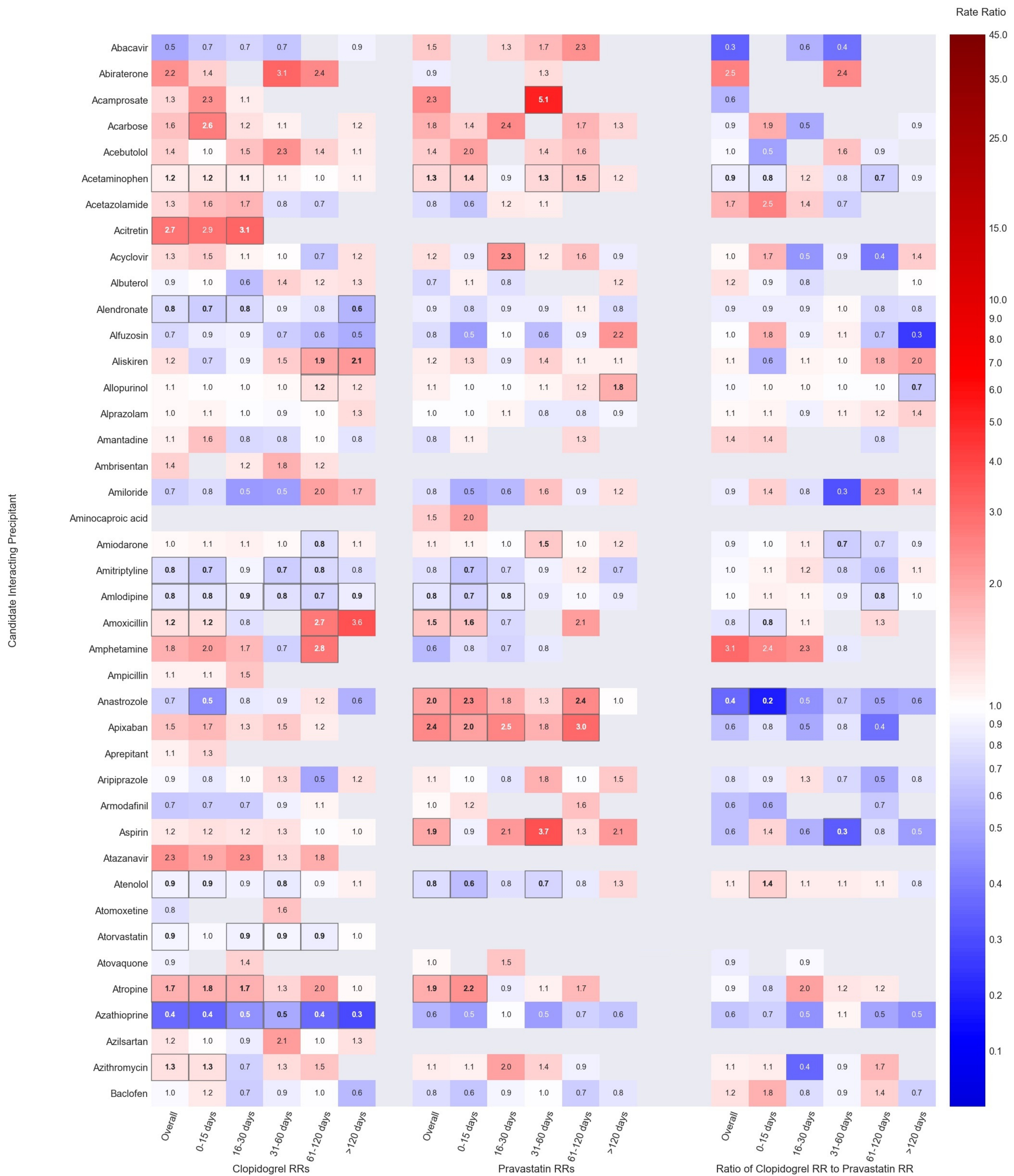
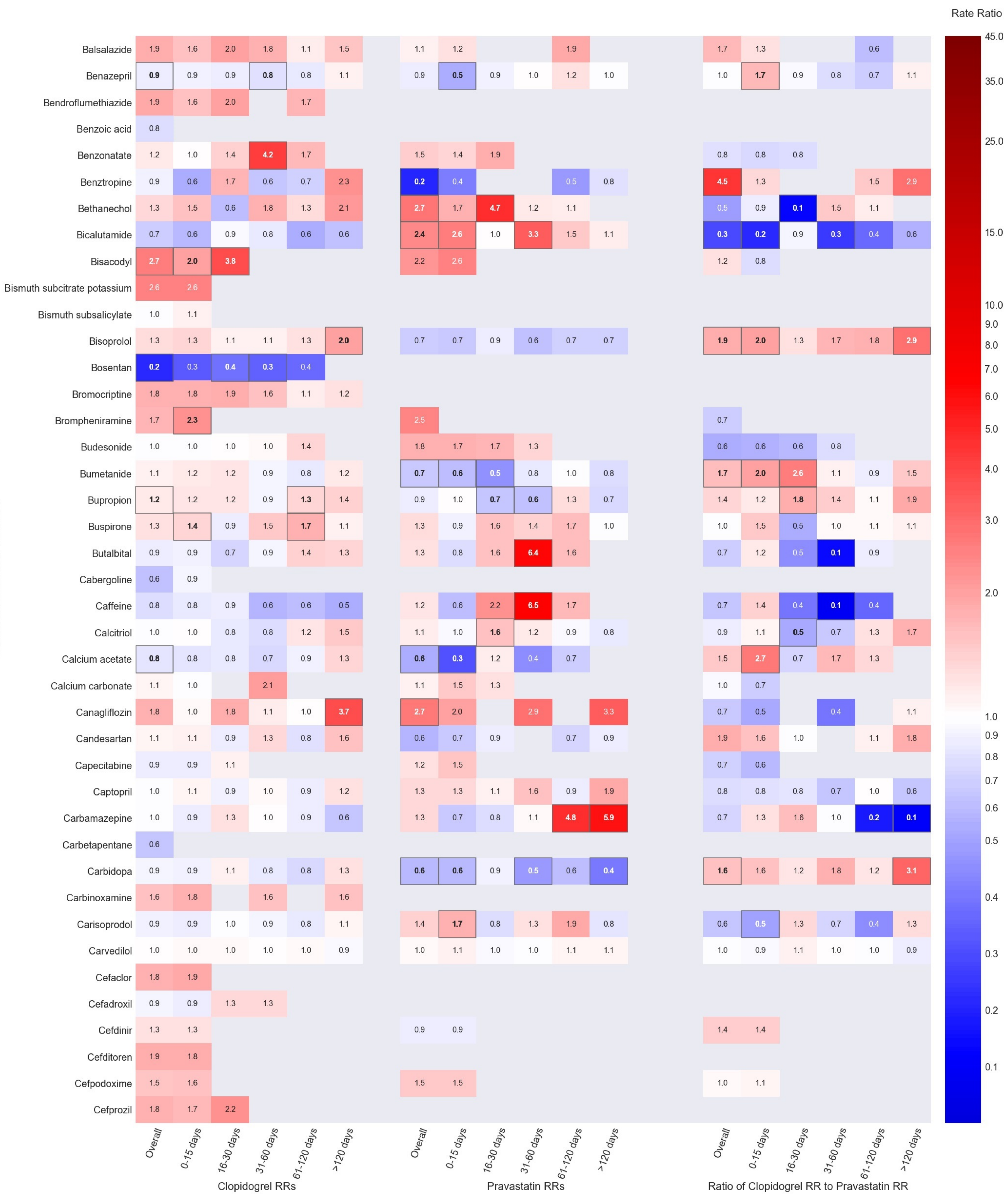


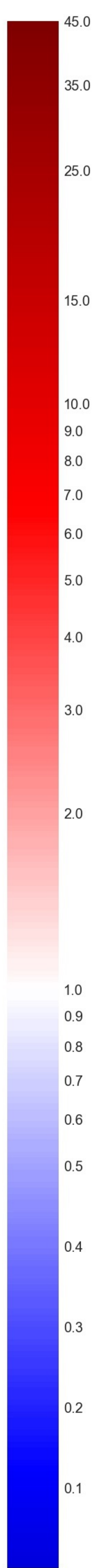
Figure S2. Heatmap depicting semi-Bayes adjusted rate ratios and ratios of semi-Bayes adjusted rate ratios for serious bleeding, overall and during prespecified risk periods: semi-Bayes adjustment assuming that 95% of true rate ratios are within a 25-fold range.

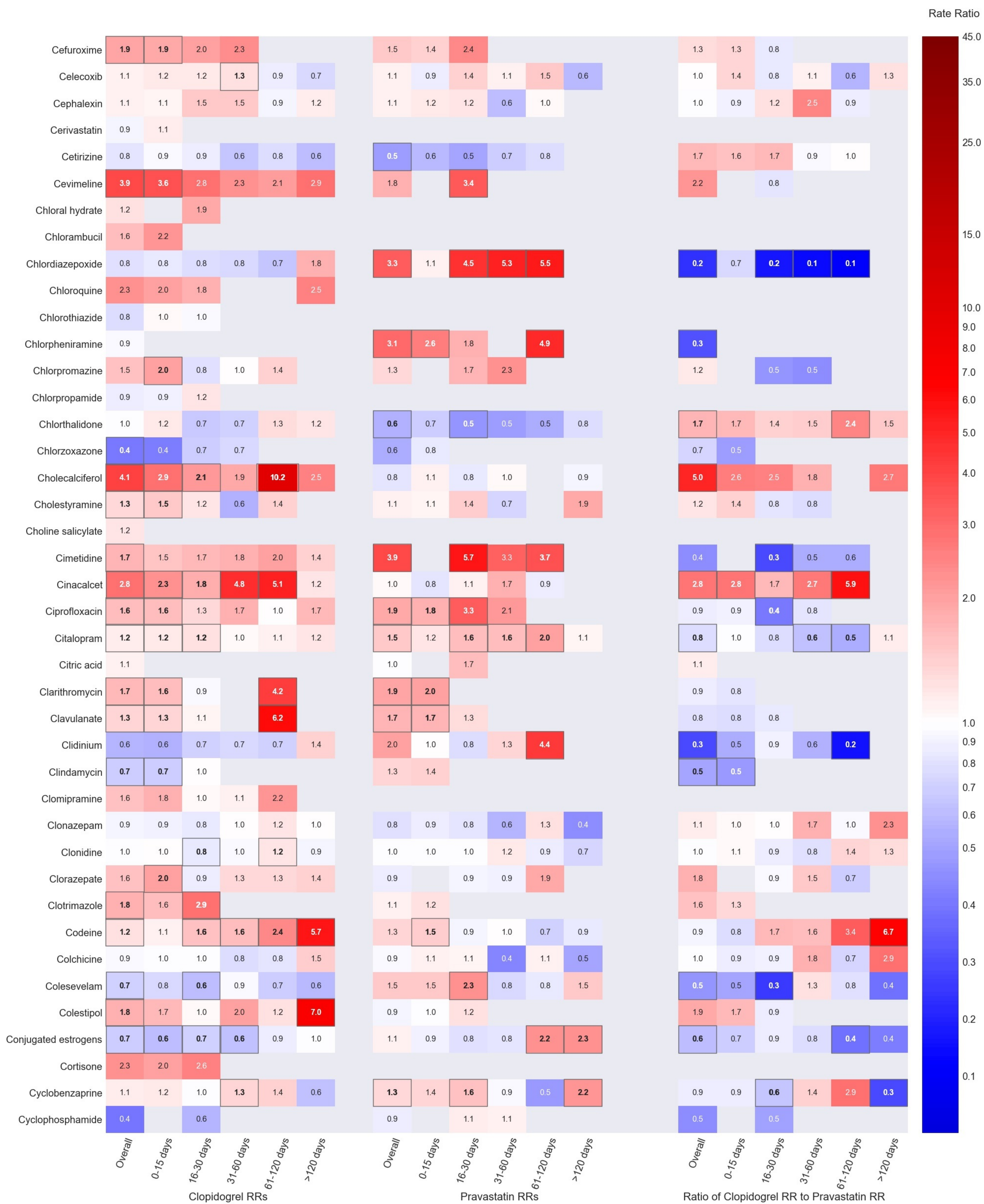


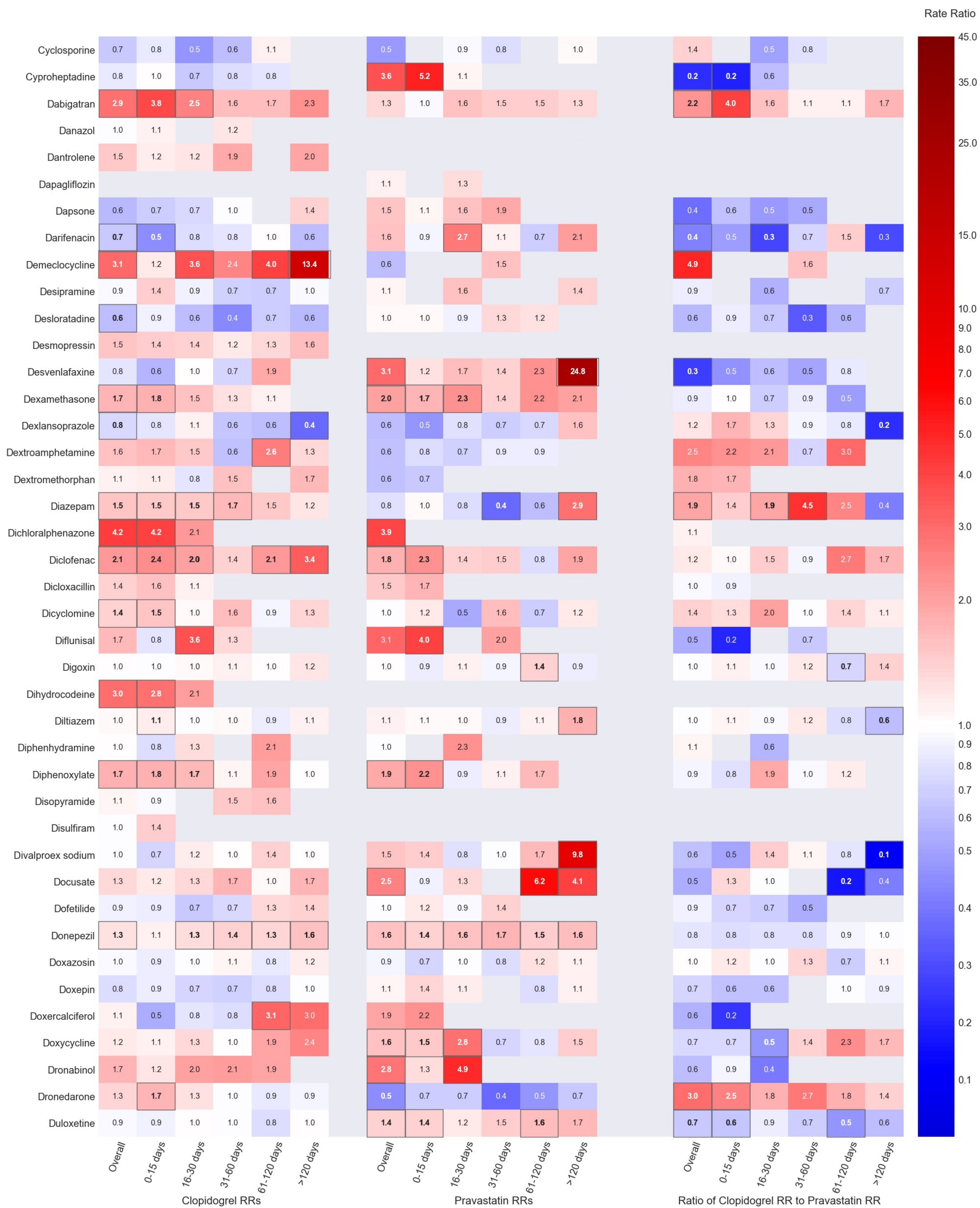
Candidate Interacting Precipitant

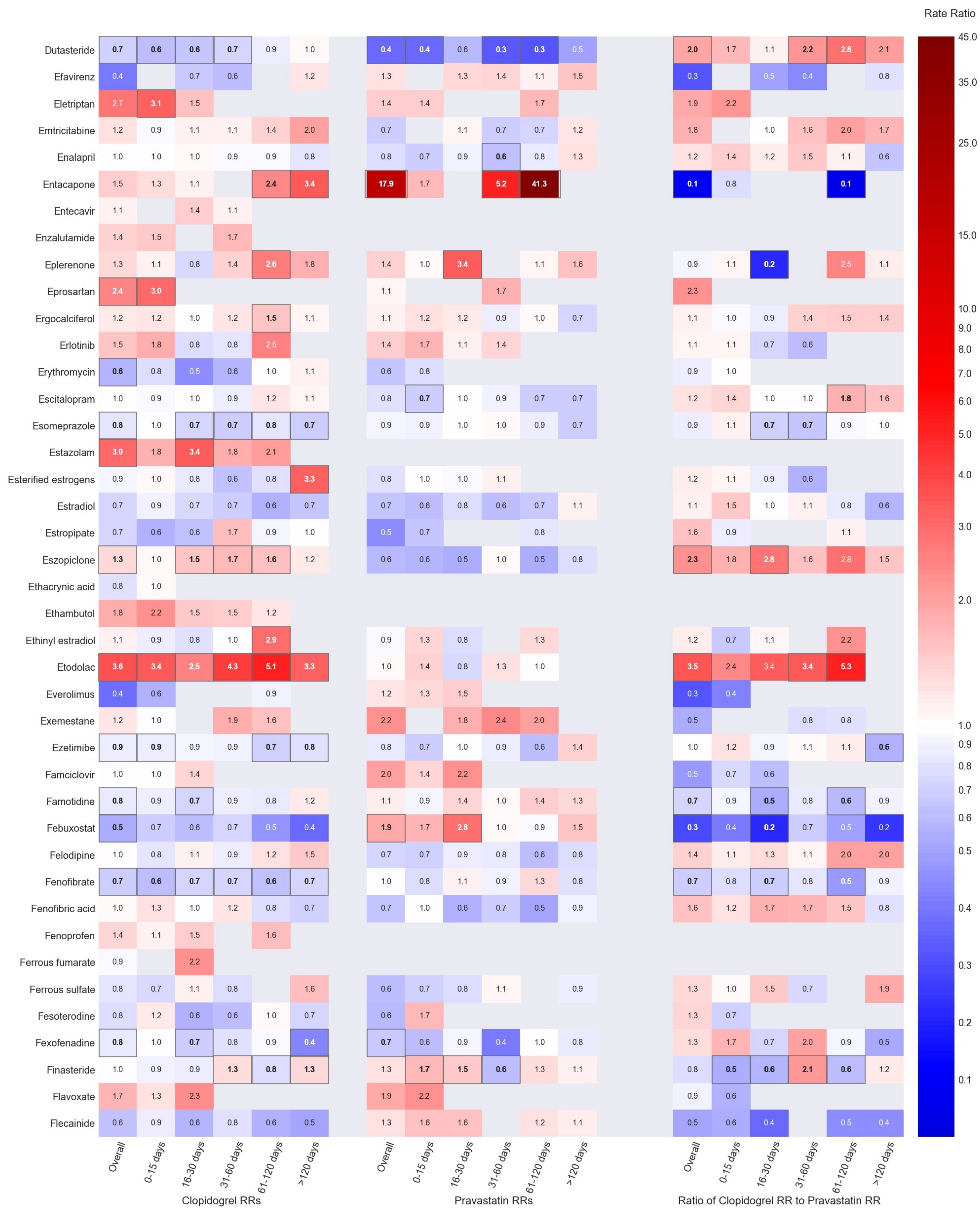


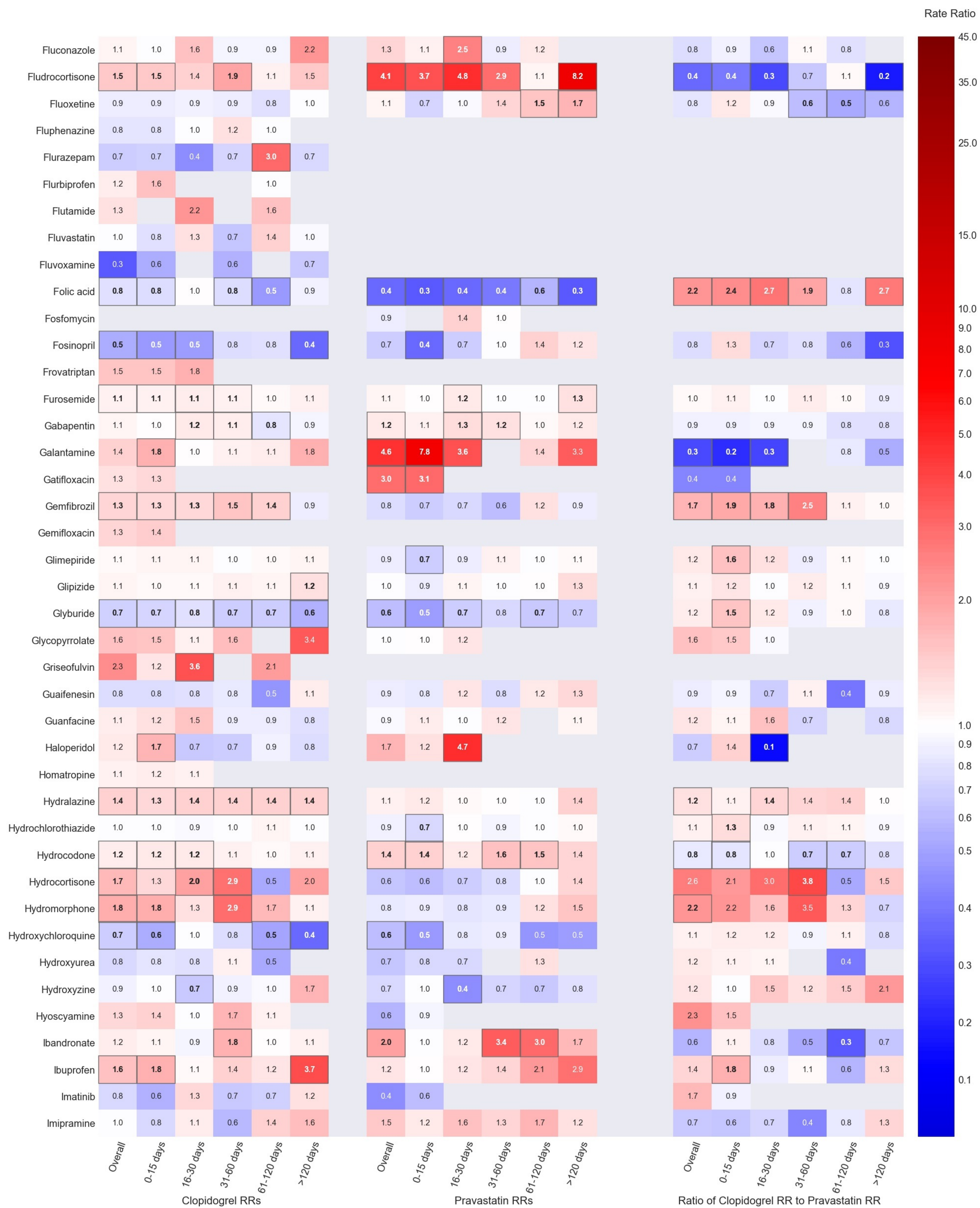
Rate Ratio

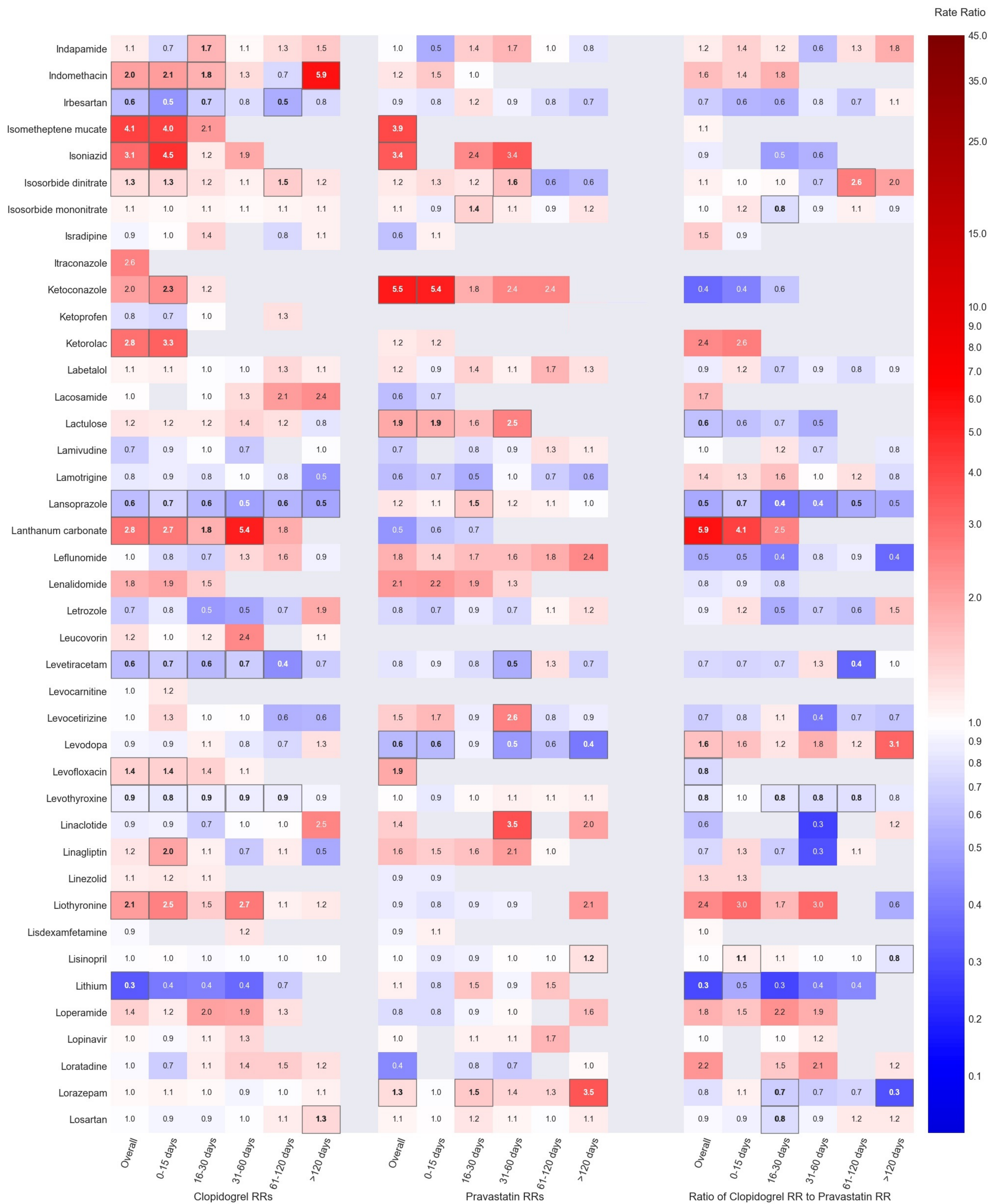




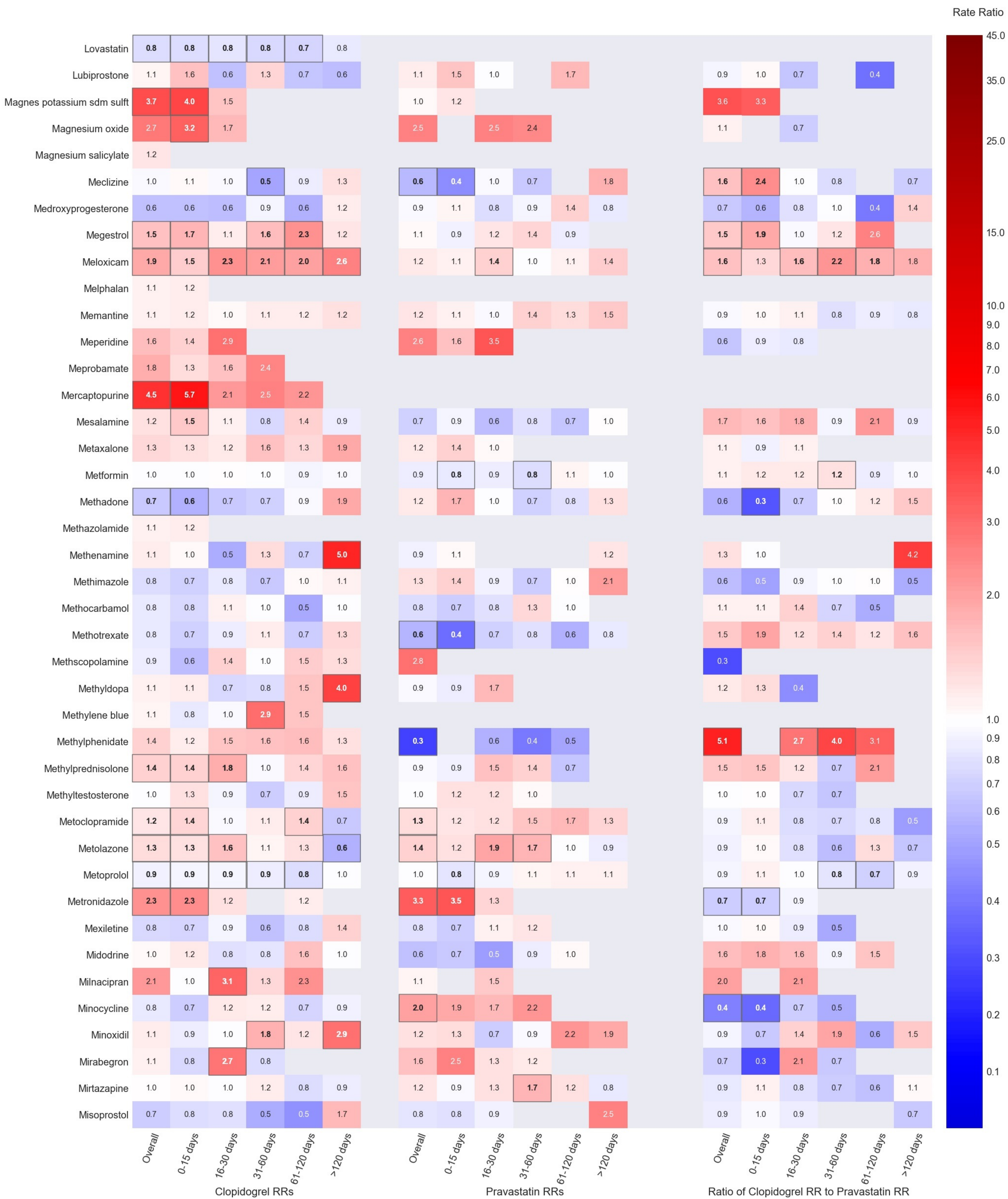




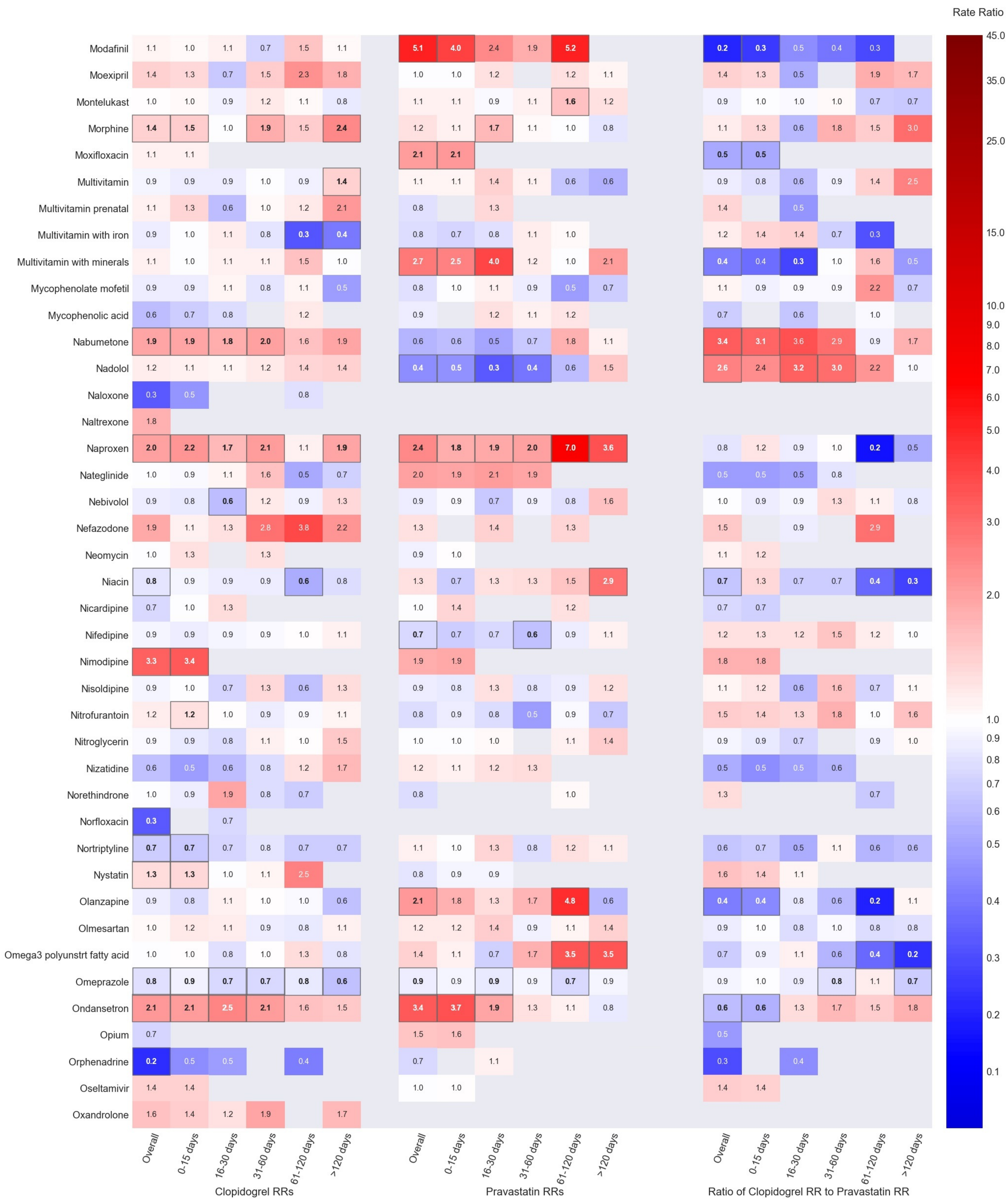




Candidate Interacting Precipitant

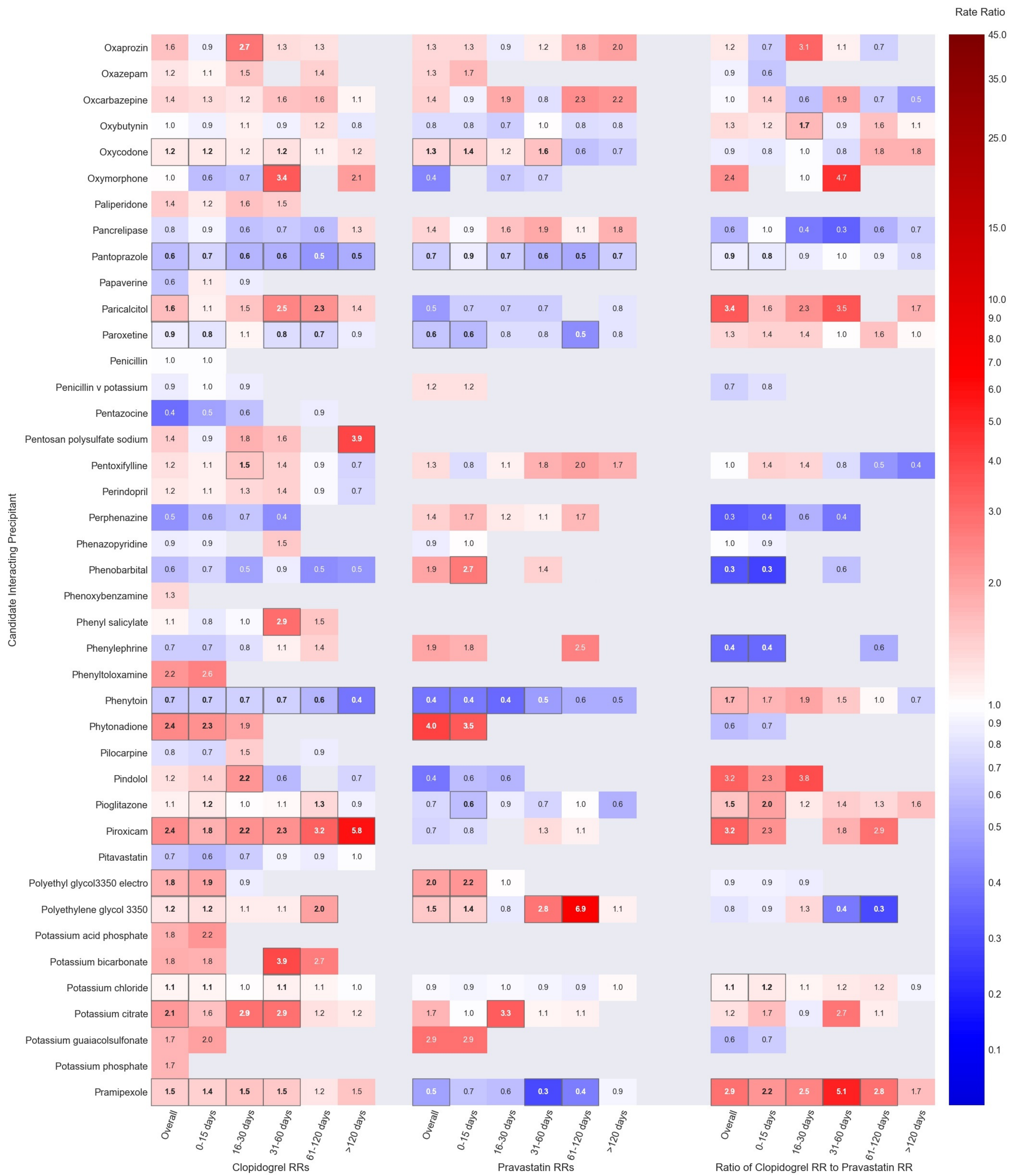


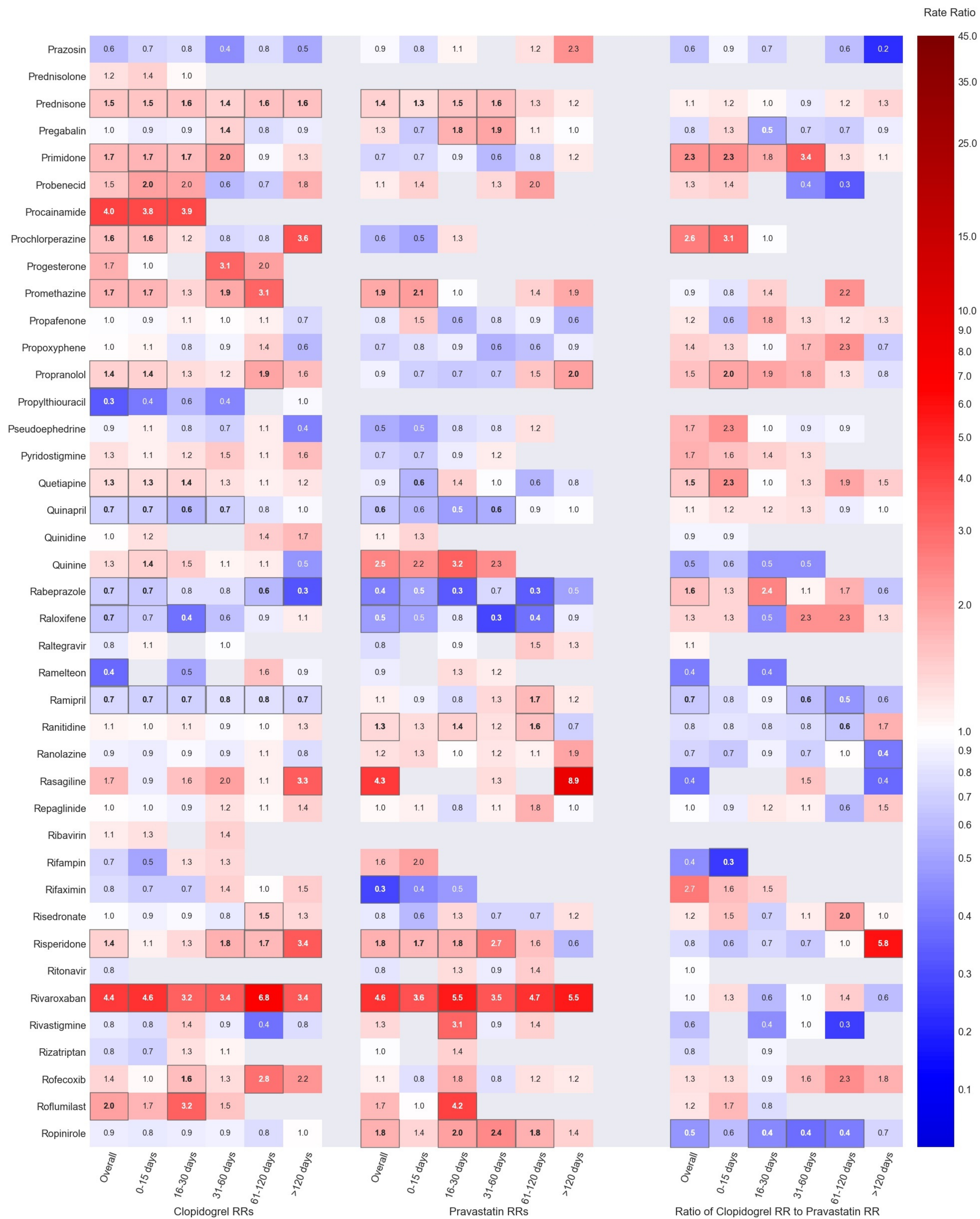
Candidate Interacting Precipitant

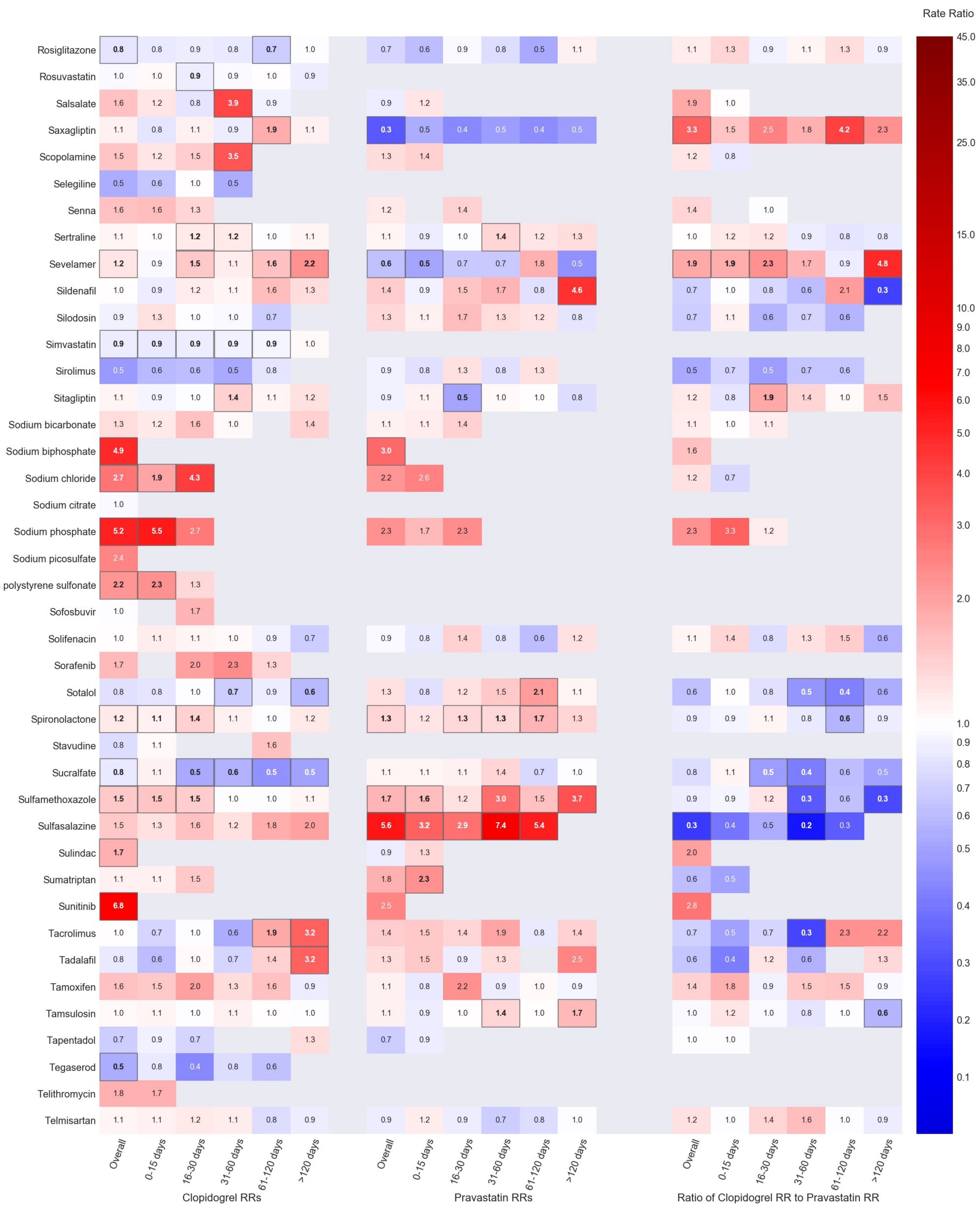


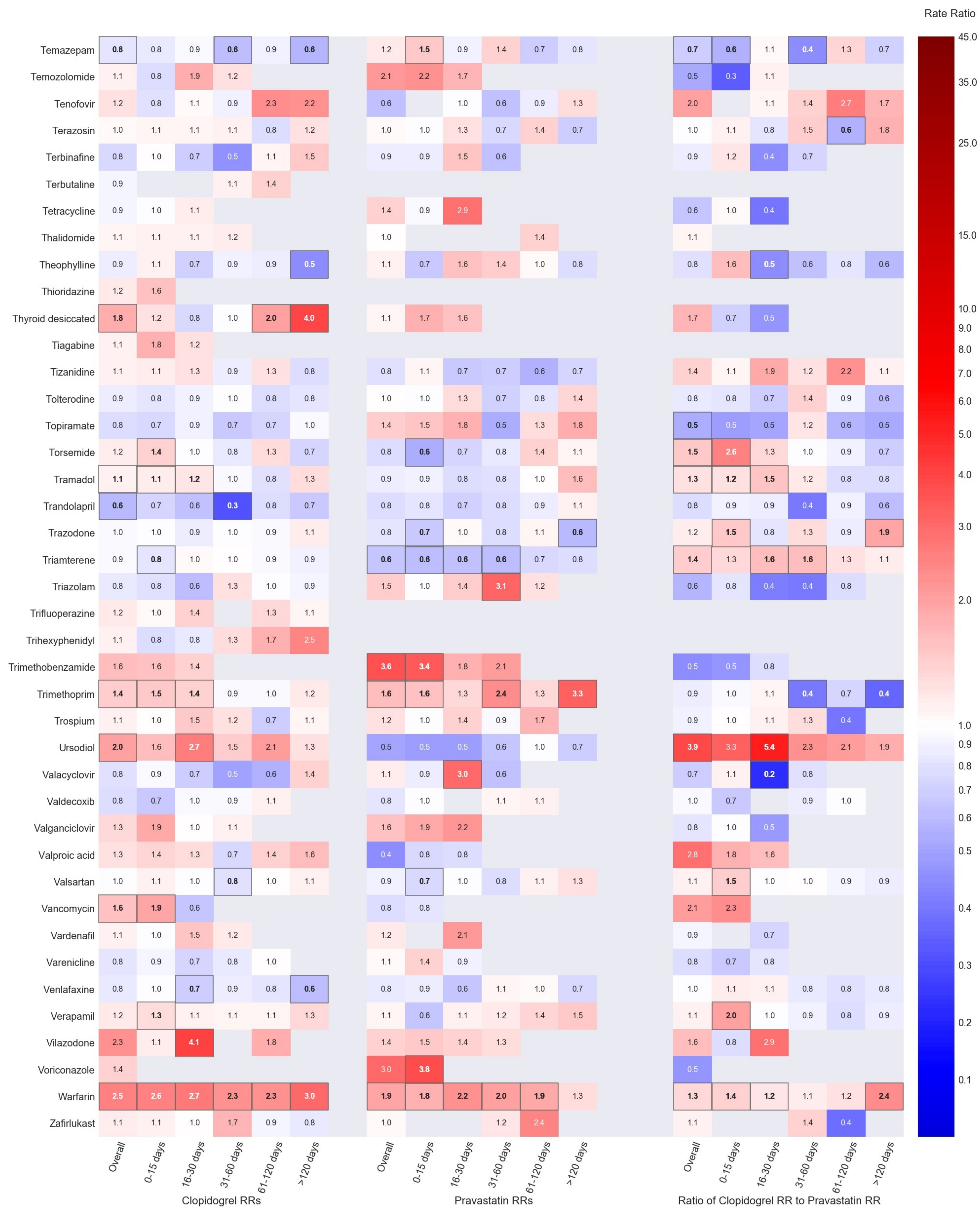
Rate Ratio

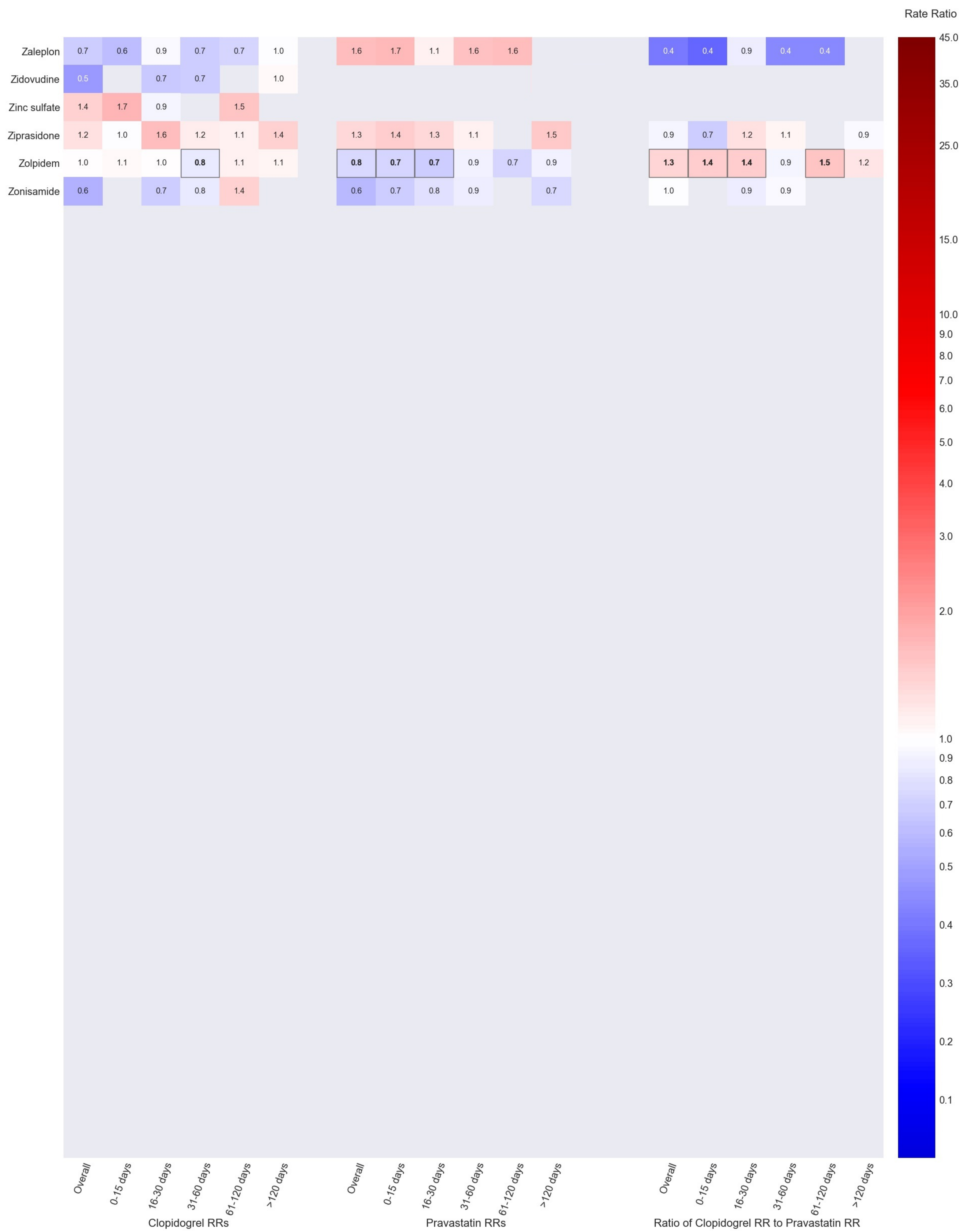












Cells with bolded effect estimates and black borders met the traditional threshold for statistical significance. Heatmap was developed using the Seaborn statistical data visualization matplotlib library (v0.8.1) for Python available at Github.