

# THE LANCET

## Haematology

### Supplementary appendix

This appendix formed part of the original submission and has been peer reviewed. We post it as supplied by the authors.

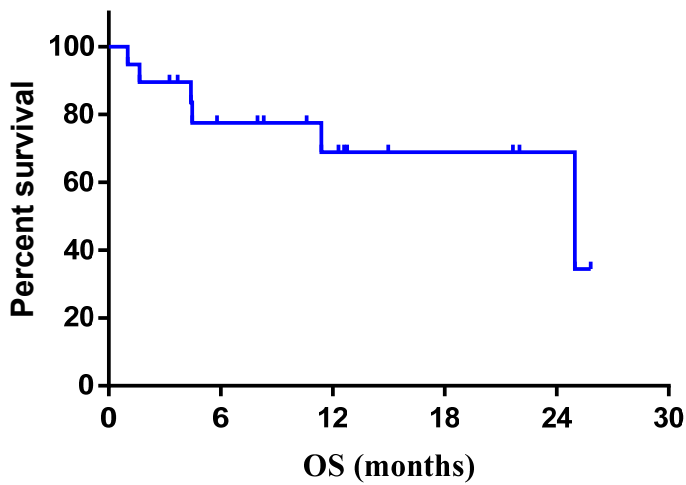
Supplement to: Ravandi F, Assi R, Daver N, et al. Idarubicin, cytarabine, and nivolumab in patients with newly diagnosed acute myeloid leukaemia or high-risk myelodysplastic syndrome: a single-arm, phase 2 study. *Lancet Haematol* 2019; published online Aug 7. [http://dx.doi.org/10.1016/S2352-3026\(19\)30114-0](http://dx.doi.org/10.1016/S2352-3026(19)30114-0).

**Supplementary table 1:** Baseline characteristics of responding patients compared to non-responders.

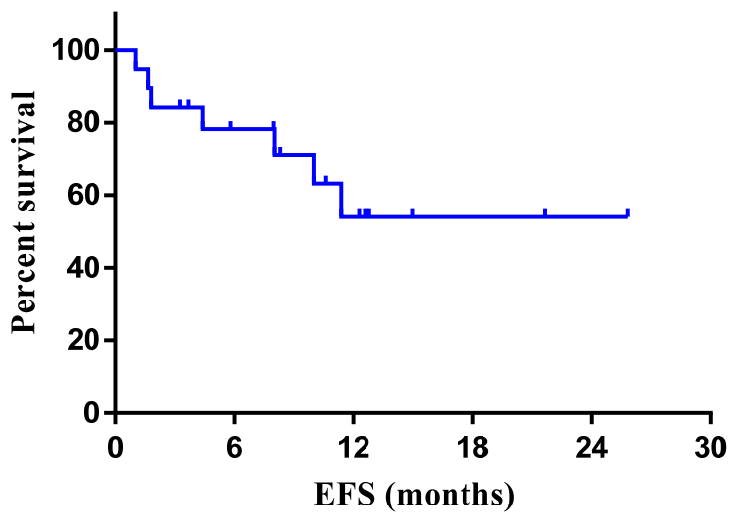
Characteristics	Responders (N=34)	Non-Responders (N=10)	P-Value
Age (years)	54 [26 – 66]	54 [36 – 65]	0.552
Female	19 (56)	8 (80)	0.273
Secondary and t-AML	6 (18)	4 (40)	0.207
WBC (x10 <sup>6</sup> /L)	4.6 [0.4 – 40]	4.7 [0.5 – 46]	0.732
Bone marrow blasts (%)	43 [14 – 96]	31 [13 – 93]	0.805
Cytogenetics			
Diploid	8 (24)	2 (20)	>0.99
-7/7q-/-5/complex	14 (41)	2 (20)	0.281
Adverse ELN genetic risk	17 (50)	5 (50)	>0.99
<i>TP53</i> mutation	4 (12)	4 (40)	0.060
<i>NPM1</i> mutation	6 (18)	0	0.300
<i>RAS</i> mutation	8 (24)	2 (20)	>0.99

**Figure 1:** Kaplan-Meier curves showing (A) overall survival (OS) and (B) event-free survival (EFS) rates of the patients treated with idarubicin, cytarabine (IA) and nivolumab who later proceeded to allogeneic stem cell transplantation (N=19).

A

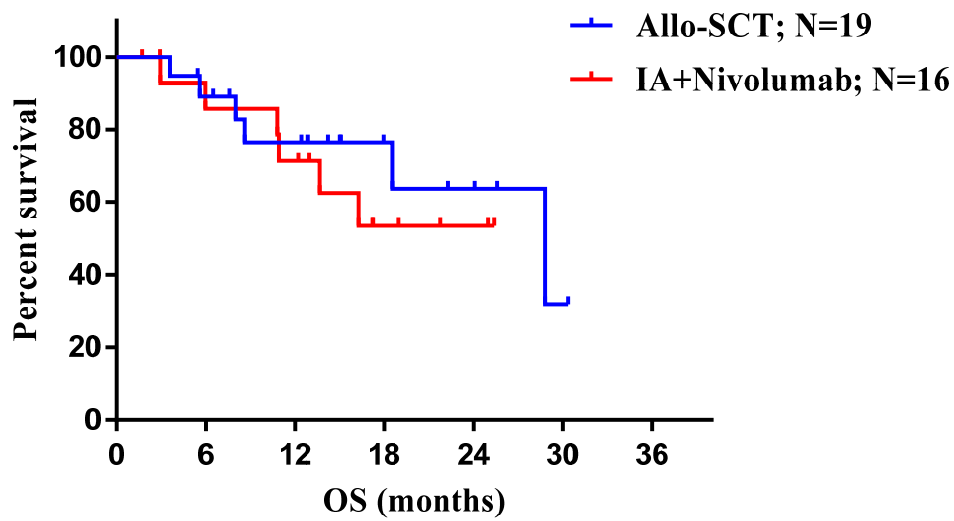


B



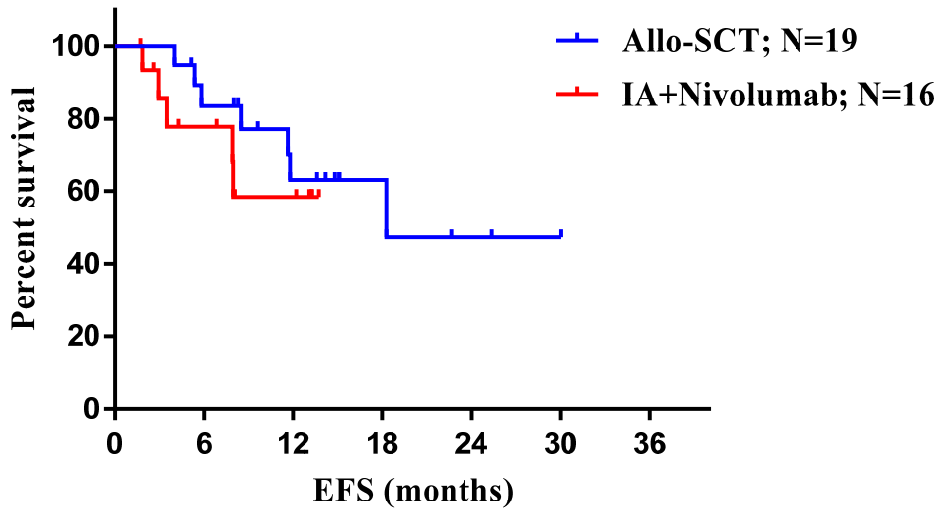
**Figure 2:** Kaplan-Meier curves showing (A) overall survival (OS), (B) event-free survival (EFS) and (C) relapse-free survival (RFS) rates of the responding patients who continued IA and nivolumab beyond remission vs those who received allogeneic stem cell transplantation (allo-SCT)

A



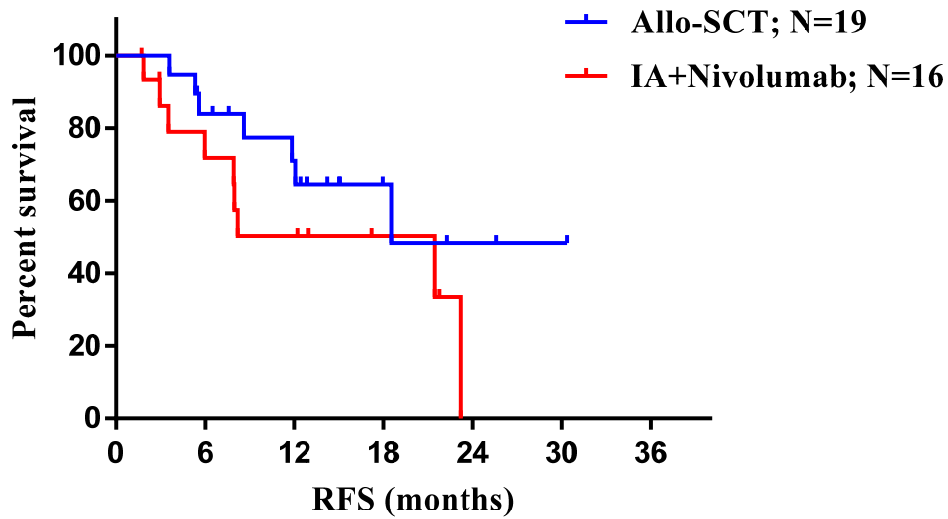
# deaths/events	6	6
Median survival	28.81	Undefined
Hazard Ratio (logrank)	A/B	B/A
Ratio (and its reciprocal)	0.7085	1.411
95% CI of ratio	0.2247 to 2.234	0.4476 to 4.451

**B**



# deaths/events	7	5
Median survival	18.29	Undefined
Hazard Ratio (logrank)	A/B	B/A
Ratio (and its reciprocal)	0.6577	1.52
95% CI of ratio	0.1955 to 2.213	0.4519 to 5.116

**C**



# deaths/events	7	9
Median survival	18.54	21.46
Hazard Ratio (logrank)	A/B	B/A
Ratio (and its reciprocal)	0.5192	1.926
95% CI of ratio	0.191 to 1.411	0.7085 to 5.236

**Figure 3:** Quantification of leukemic progenitor cells and T-cells using Cytof mass cytometry at baseline and during consolidation therapy

