

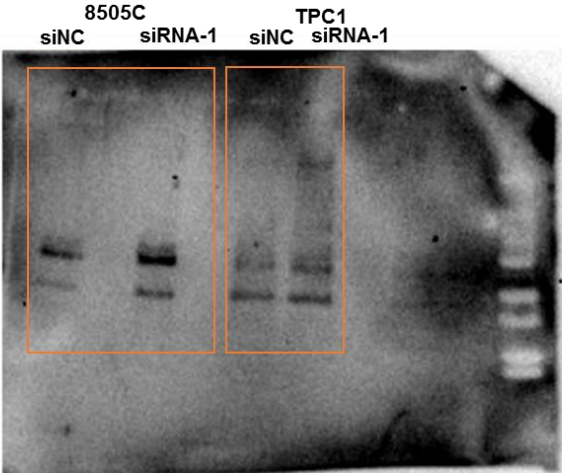
Supplementary Information

LncRNA LUCAT1 as a novel prognostic biomarker for patients with papillary thyroid cancer.

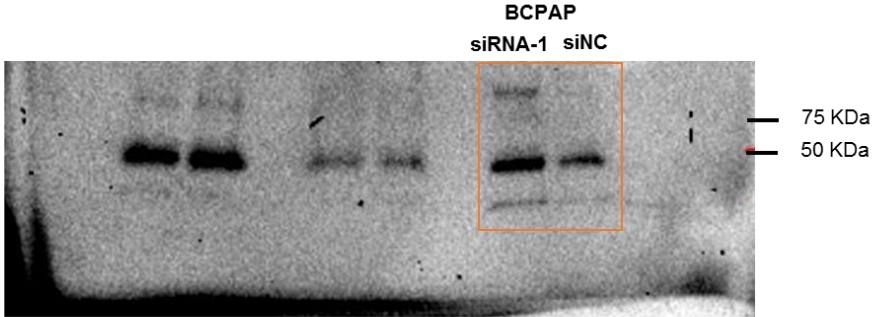
Luzón Toro B, Fernández RM, Martos-Martínez JM, Rubio-Manzanares-Dorado M, Antiñolo G, Borrego S.

Supplementary Figure 1: All unprocessed original scans for all of the blots presented in figure 5.

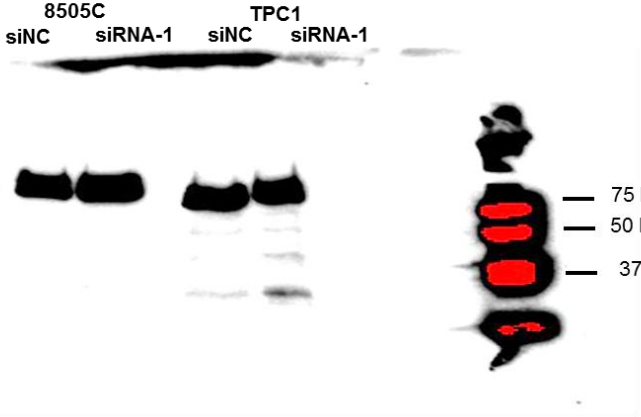
**Pro-Caspase 8
(18/43/7Kda)**



**Caspase 8 (57 KDa)
Cleaved Caspase 8
(43/18KDa)**



Lamin A/C (A:74 Kda; C:63 Kda)



**Lamin A/C
(74/63 Kda)
Cleaved
Lamin A/C
(41/28 Kda)**



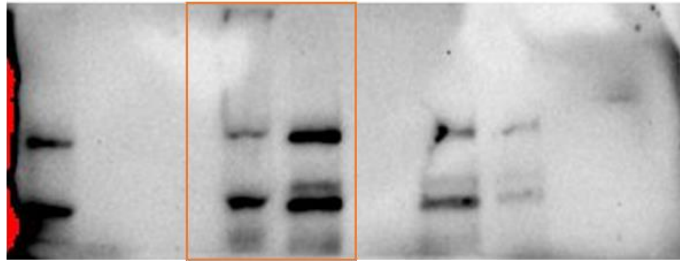
PARP (116/89 Kda)

**PARP
(116 Kda)**

100 KDa —

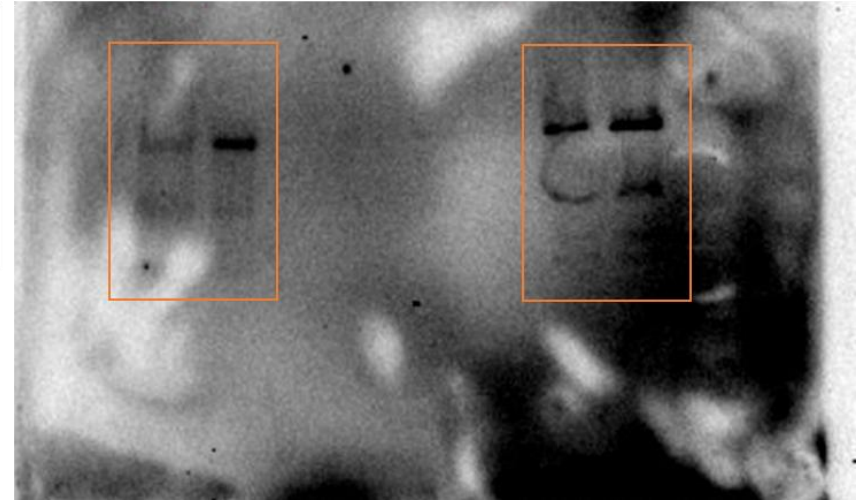
75 KDa —

TPC1
siRNA-1 siNC

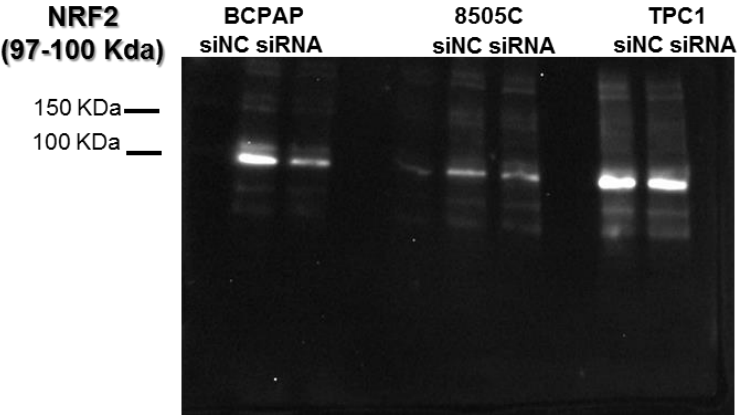
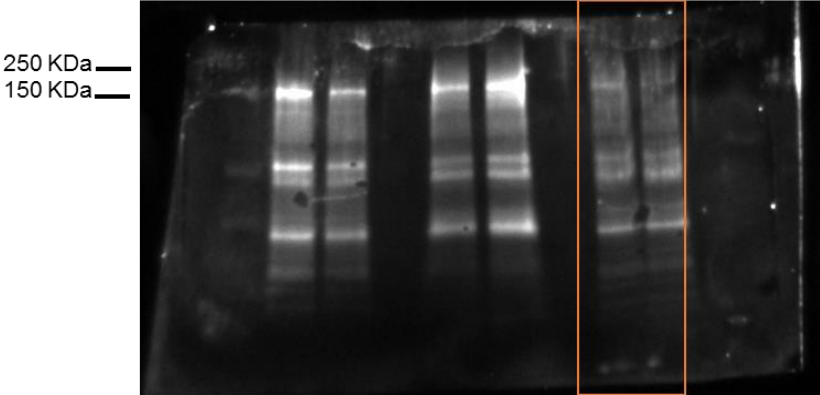
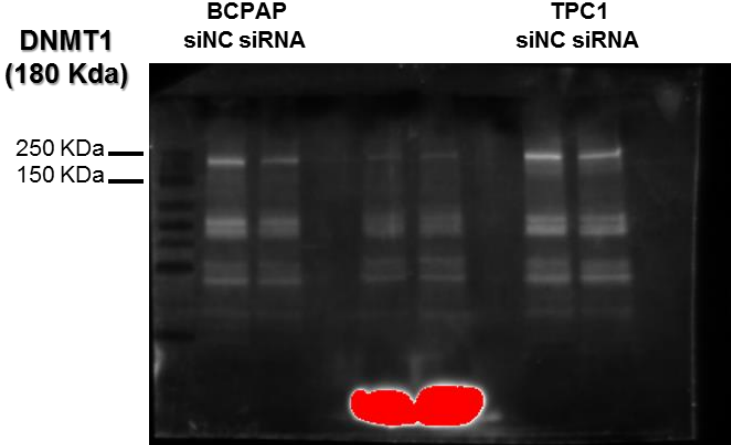


8505C
siRNA siNC

BCPAP
siNC siRNA

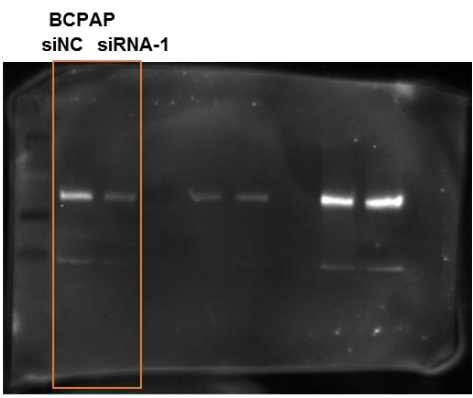


Supplementary Figure 2: All unprocessed original scans for all of the blots presented in figure 6.



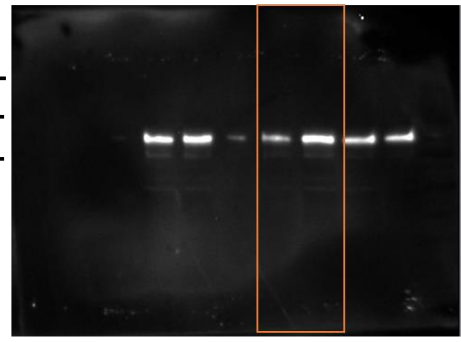
**EZH2
(98 Kda)**

150 KDa
100 KDa
75 KDa



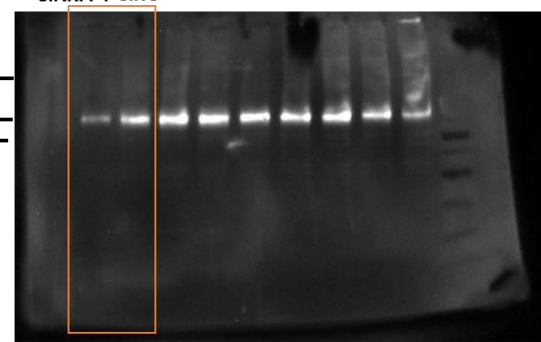
**TPC1
siRNA-1 siNC**

150 KDa
100 KDa
75 KDa



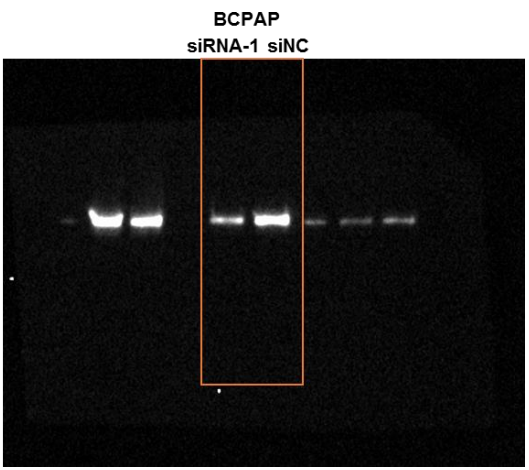
**8505C
siRNA-1 siNC**

150 KDa
100 KDa
75 KDa



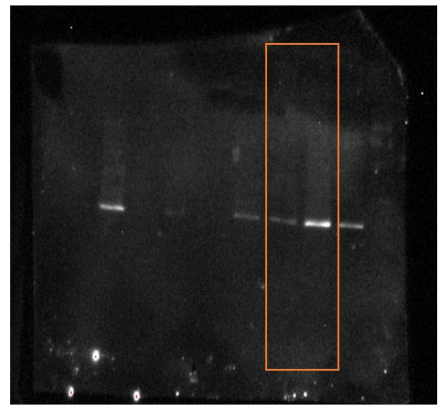
**HDAC1
(62 Kda)**

75 KDa
50 KDa



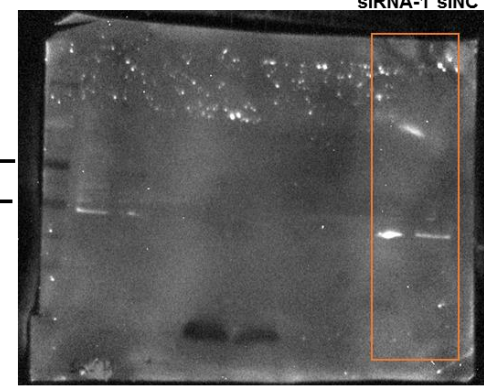
**TPC1
siNC siRNA-1**

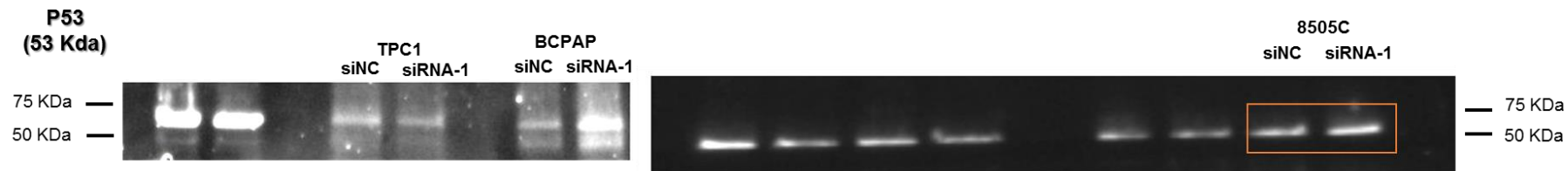
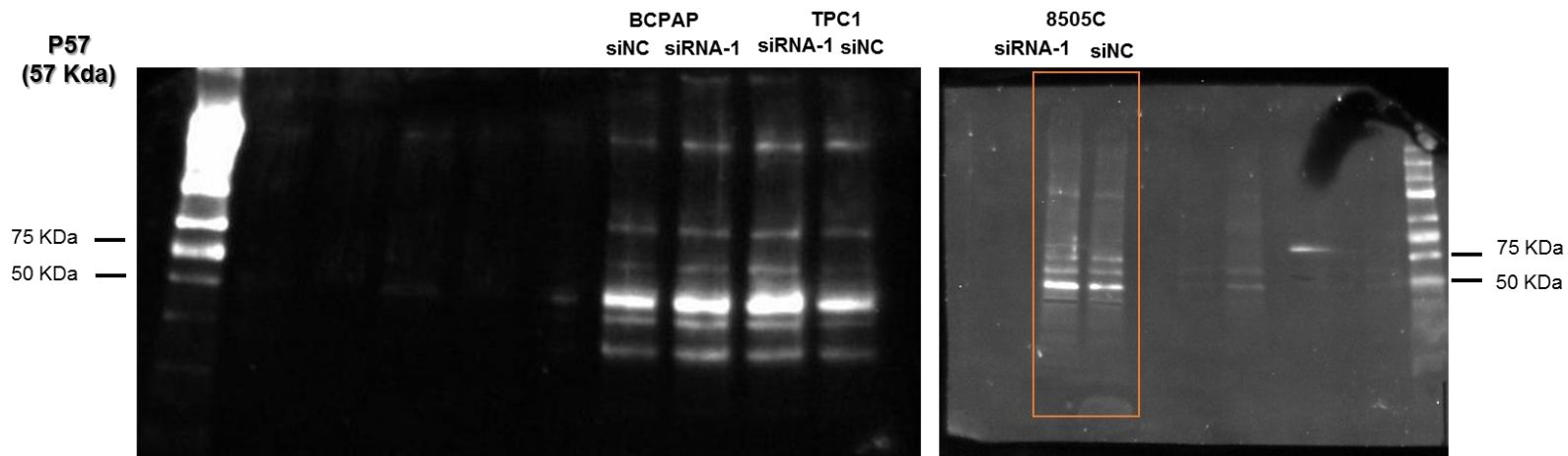
75 KDa
50 KDa



**8505C
siRNA-1 siNC**

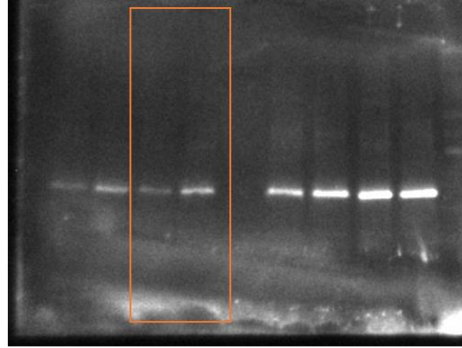
75 KDa
50 KDa



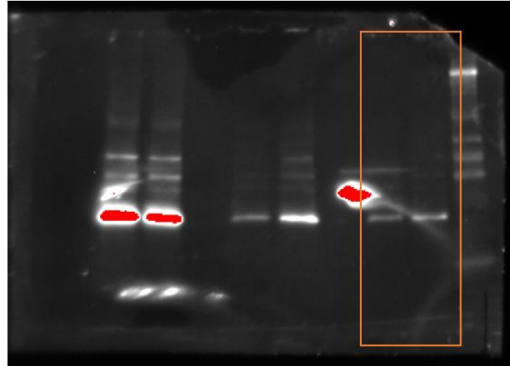


**CDK1
(34 Kda)**

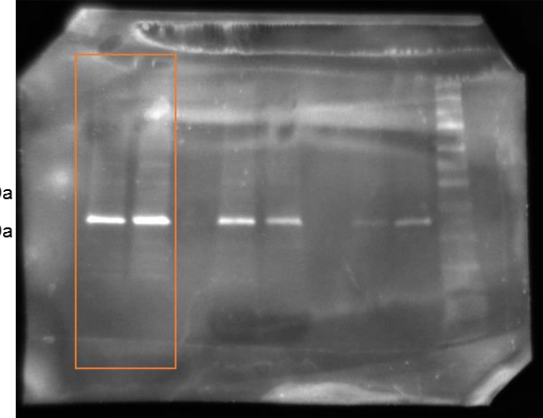
BCPAP
siRNA-1 siNC



TPC1
siNC siRNA-1



8505C
siRNA-1 siNC



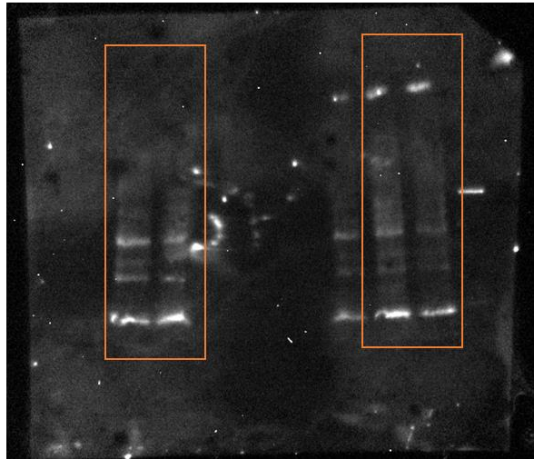
37 KDa —
25 KDa —

37 KDa —
25 KDa —

37 KDa —
25 KDa —

**P21
(21 Kda)**

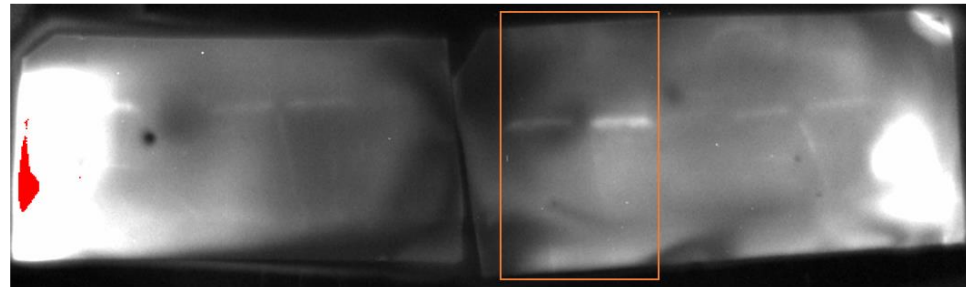
8505C
siNC siRNA-1



BCPAP
siRNA-1 siNC

25 KDa —
20 KDa —

TPC1
siNC siRNA-1



25 KDa —
20 KDa —

