

Table S1. Hill coefficient values for the obtained concentration-response curves.

Hill Coefficient	$\alpha 1\beta 1\delta \epsilon$ (nM)	$\alpha 1\beta 1\gamma \delta$ (nM)	$\alpha 9\alpha 10$ (nM)
MiIIA	1.2 ± 0.1	0.7 ± 0.1	/
MiIIA[M9G]	/	1.0 ± 0.1	/
MiIIA[N10K]	/	0.8 ± 0.1	/
MiIIA[$\Delta 1, M2R$]	0.75 ± 0.1	0.7 ± 0.1	/
MiIIA[$\Delta 1, M2R, M9G, N10K, H11K$]	0.9 ± 0.3	1.4 ± 0.4	1.03 ± 0.3
MiIIA[M9G, N10K]	1.7 ± 0.1	1.8 ± 0.4	/

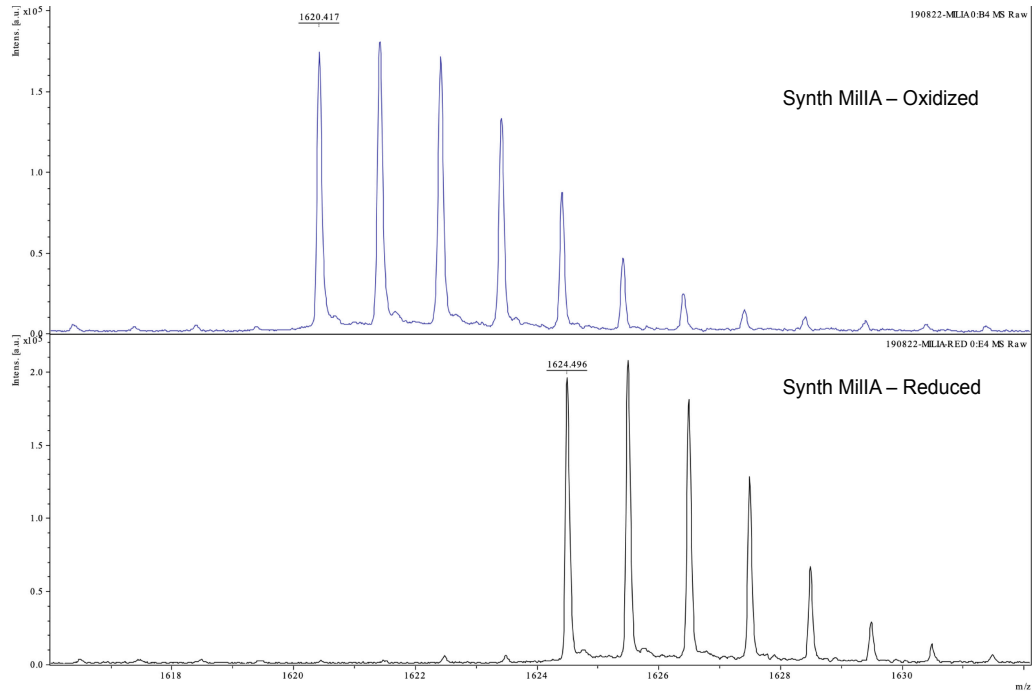


Figure S1. MALDI-TOF analysis of synthetic MiIIA.

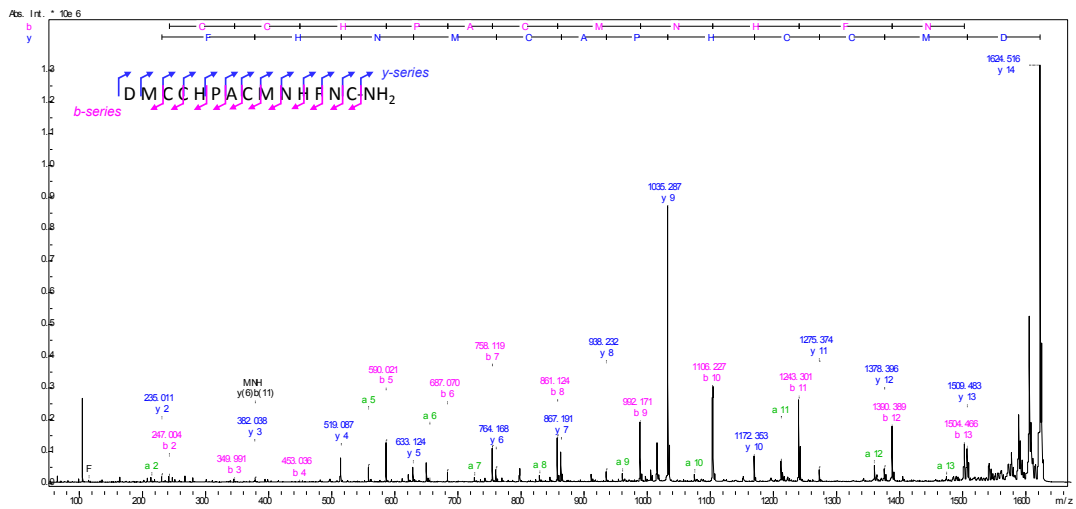


Figure S2. Sequence verification of synthetic reduced MiIIA.