

Supplementary Materials

Figure S1. HPLC chromatogram of the BRF detected at 280 nm.

Figure S2. LCMS profiles of five standard compounds. From (a) to (e) are isoorientin, isovitexin, pinosylvin, tricin, isorhamnetin.

Table S1. Main flavonoids compounds in BRF identified using LCMS profiling.

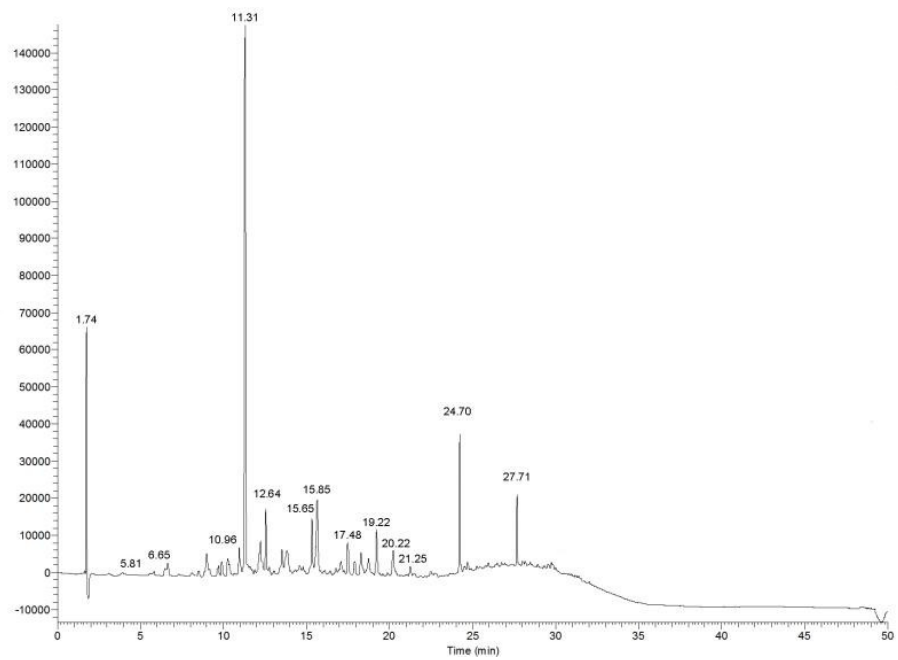
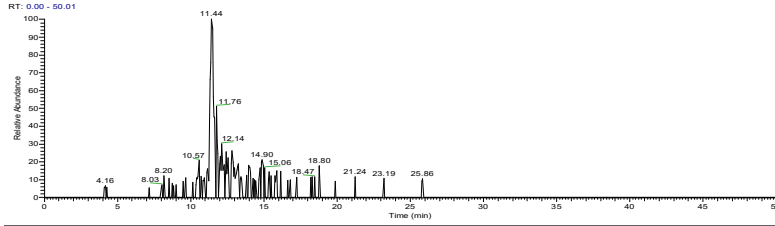


Fig. S1.

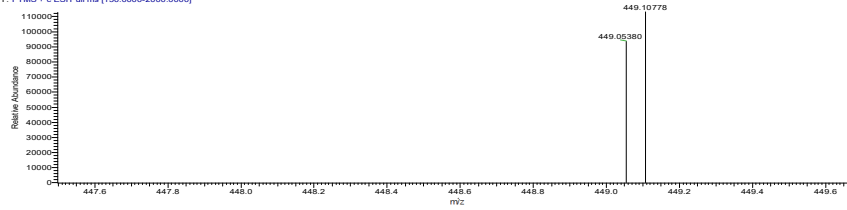
D:\DATA\...SAM_20190804102057

08/04/19 10:22:09



N: 1.21E5
m/z: 449.10575-449.11025
F: FTMS - c ESI Full ms
[150.0000-2000.0000]
MS
SAM_20190804102057

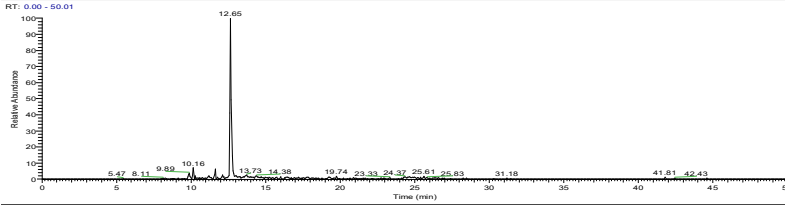
SAM 20190804102057 #4750 RT: 11.49 AV: 1 SB: 197 6.66-11.26, 15.43-21.48 N: 1.13E5
T: FTMS - c ESI Full ms [150.0000-2000.0000]



a

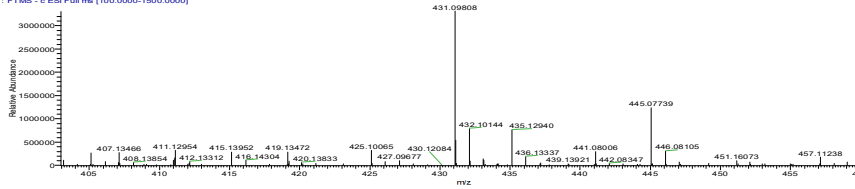
D:\DATA\...SAM_20190804102057

08/04/19 10:22:09

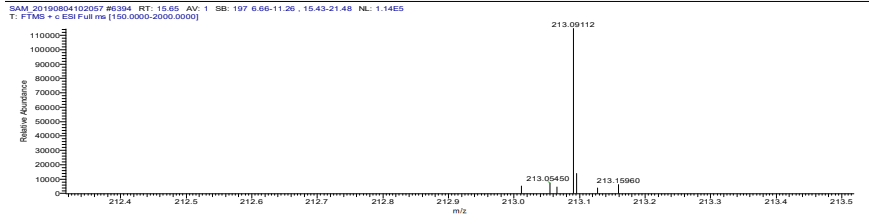
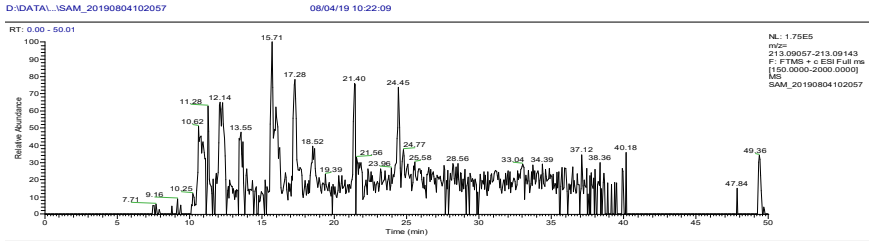


N: 3.32E6
m/z: 431.09564-431.10018
F: FTMS - c ESI Full ms
[100.0000-1500.0000]
MS
SAM_20190804102057

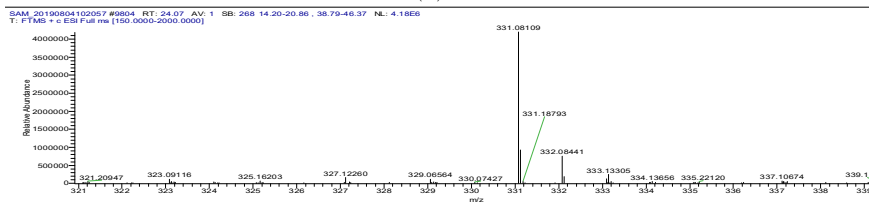
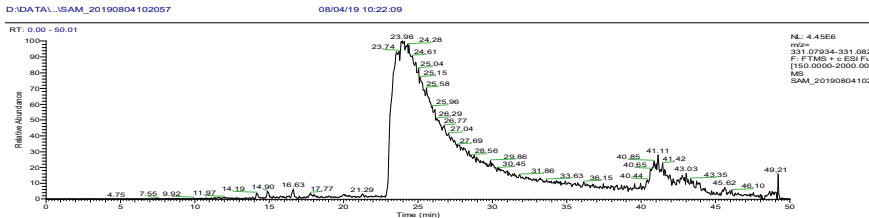
SAM 20190804102057 #173 RT: 12.85 AV: 1 SB: 197 6.66-11.26, 15.43-21.48 N: 3.30E6
T: FTMS - c ESI Full ms [100.0000-1500.0000]



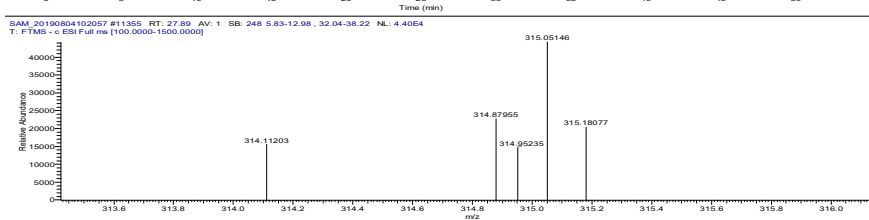
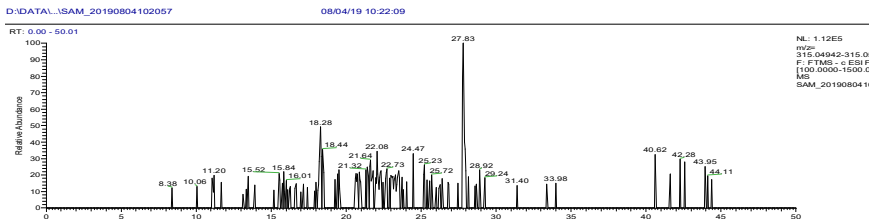
b



c



d



e

Fig. S2.

Table S1.

Sample	Compounds	Retention Time (RT)	Molecular weight
BRF	isorientin	11.31	448.376
	isovitexin	12.64	432.377
	pinosylvin	15.65	212.24
	tricin	24.7	330.29
	isorhamnetin	27.71	316.27
standards	isorientin	11.49	448.108
	isovitexin	12.65	432.098
	pinosylvin	15.71	212.091
	tricin	24.07	330.081
	isorhamnetin	27.89	316.051