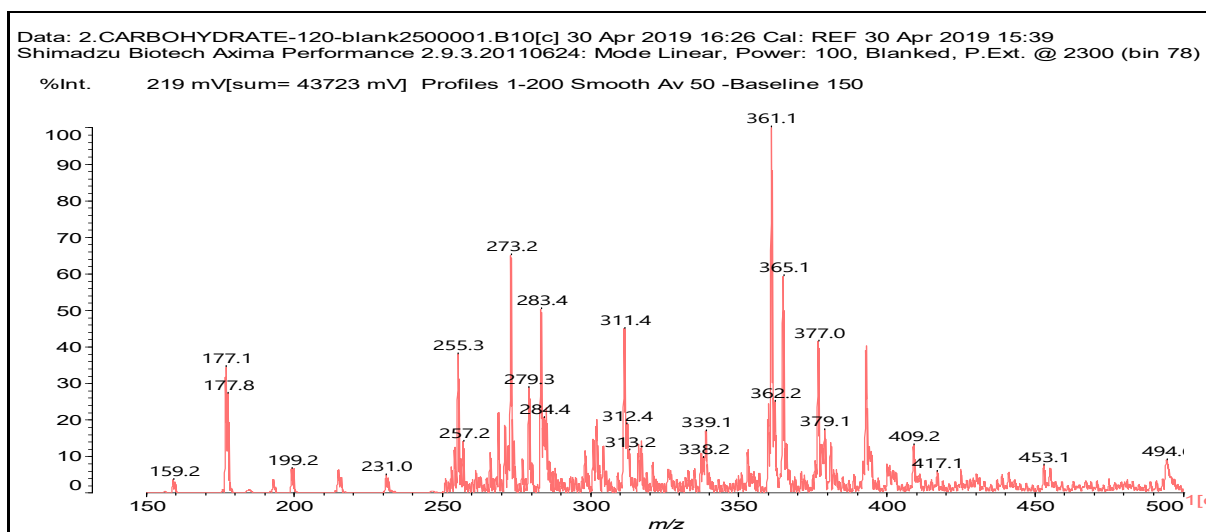
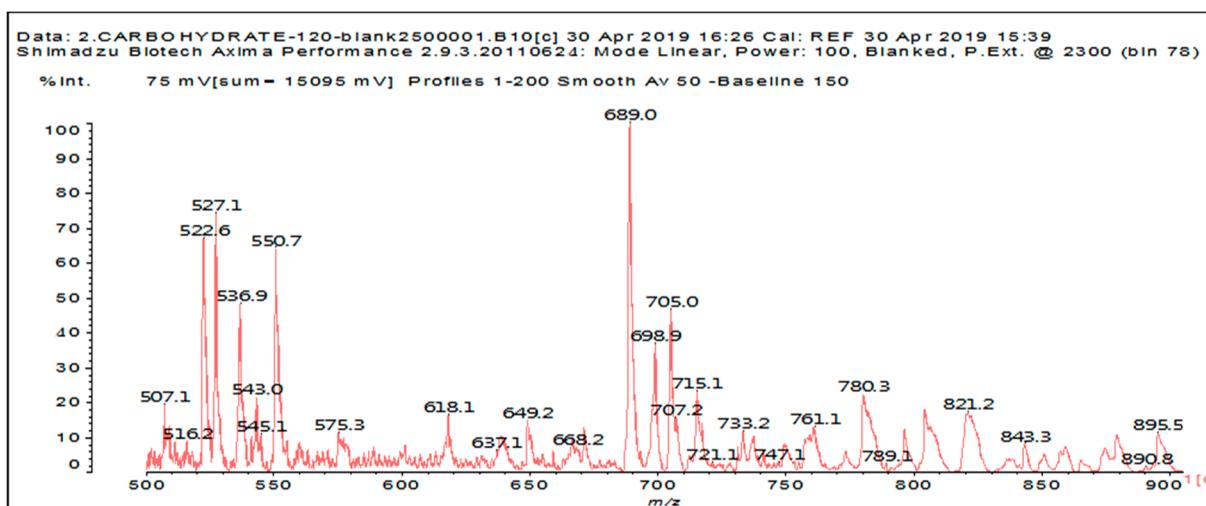


## SUPPLEMENTARY MATERIAL

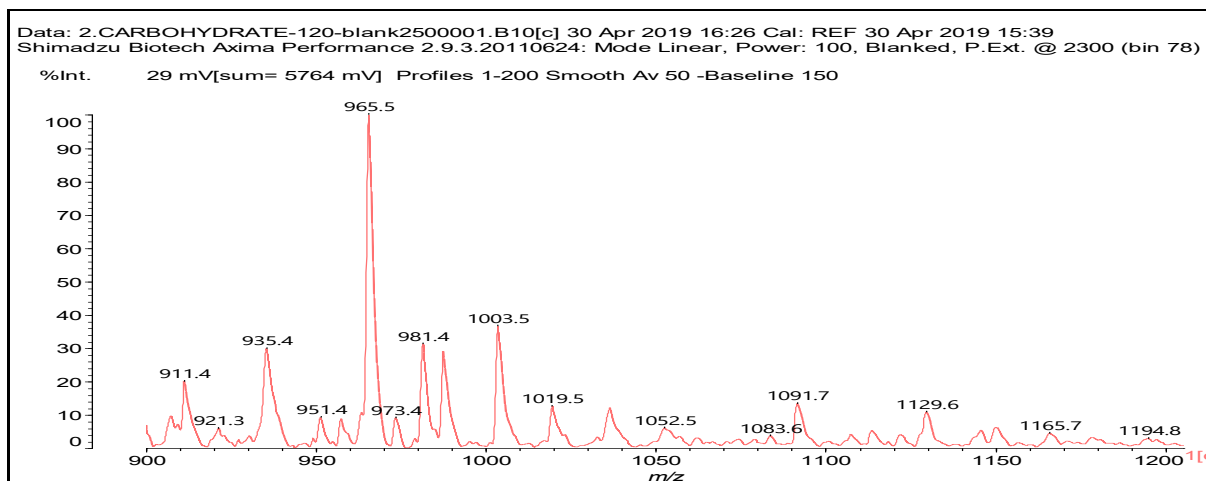
**Figure S1:** Insoluble Carbohydrates 1h at 120°C (no peroxide). (a) 150 Da to 500 Da range. (b) 500 Da to 900 Da range. (c) 900 Da to 1200 Da range.



(a)

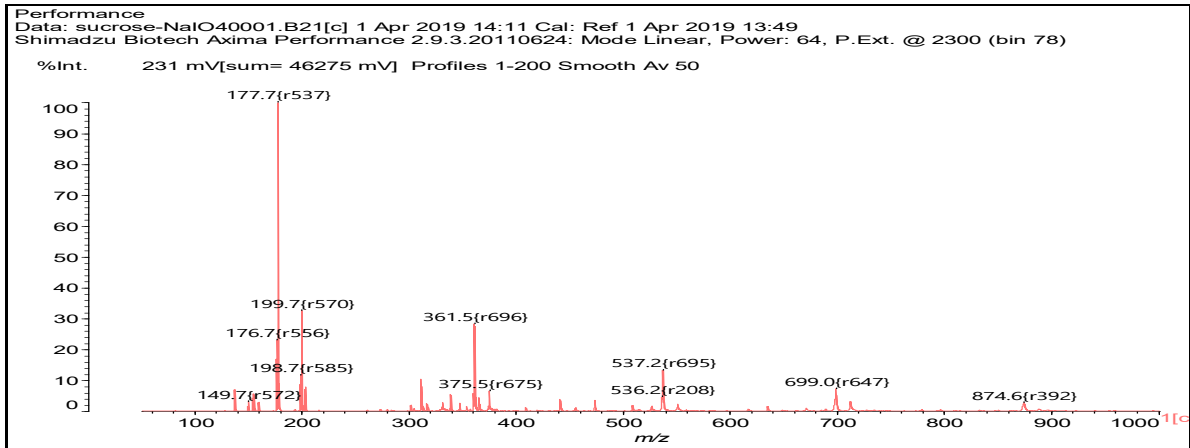


(b)

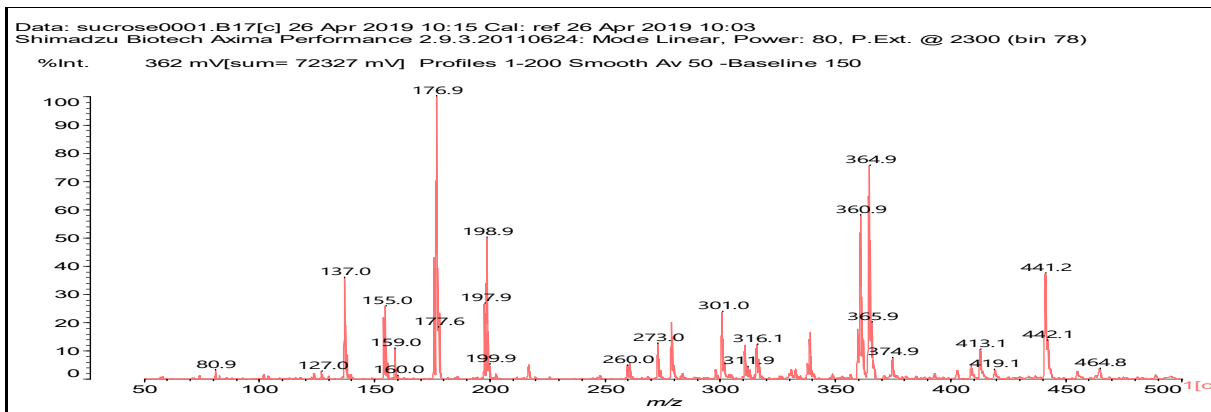


(c)

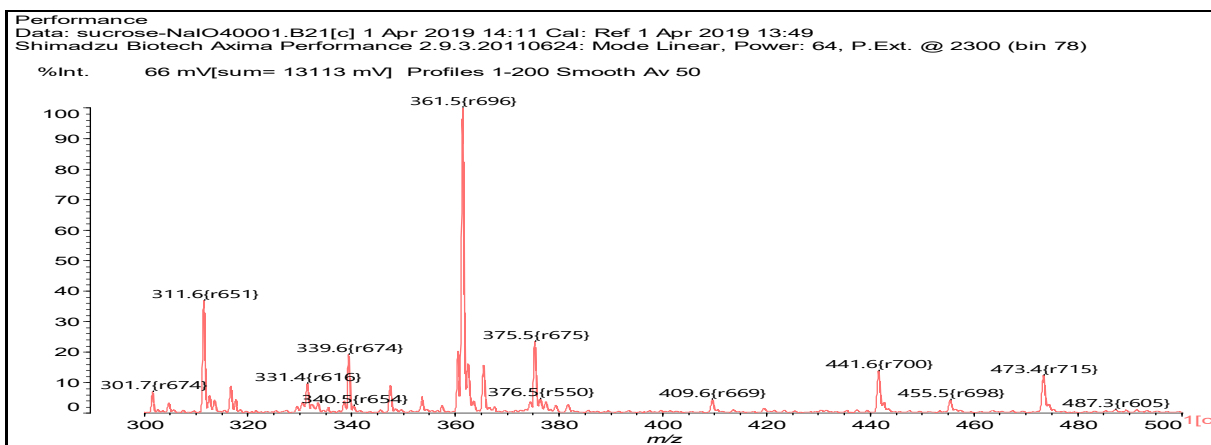
**Figure S2** : sucrose+15%NaIO<sub>4</sub> at 120°C for 1 hour. ). (a) 100 Da to 1000 Da range. (b) 50 Da to500 Da range. (c) 300 Da to 500 Da range. (d) 500 Da to 800 Da range. (e) 800 Da to 1600 Da range.



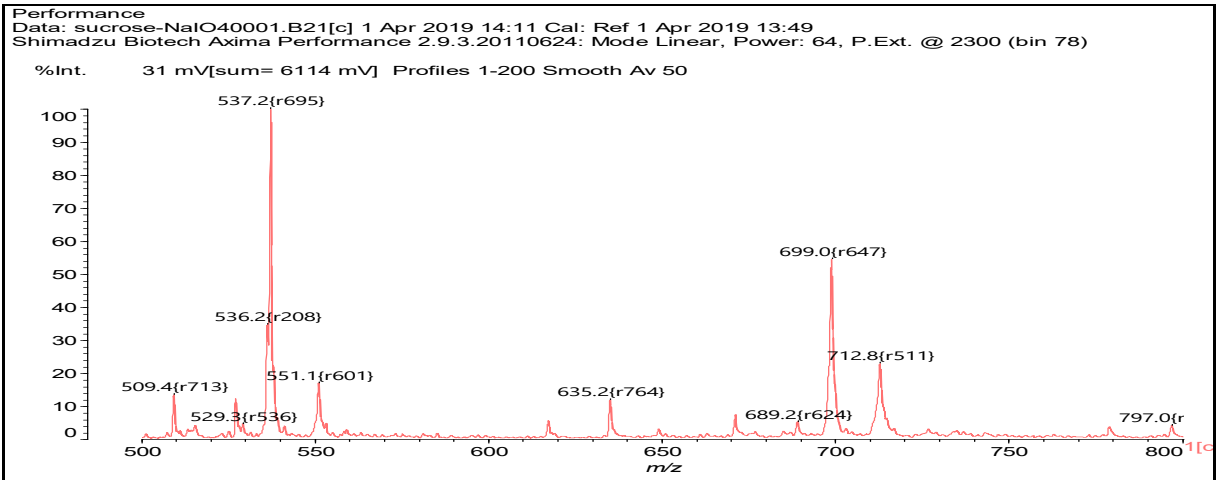
(a)



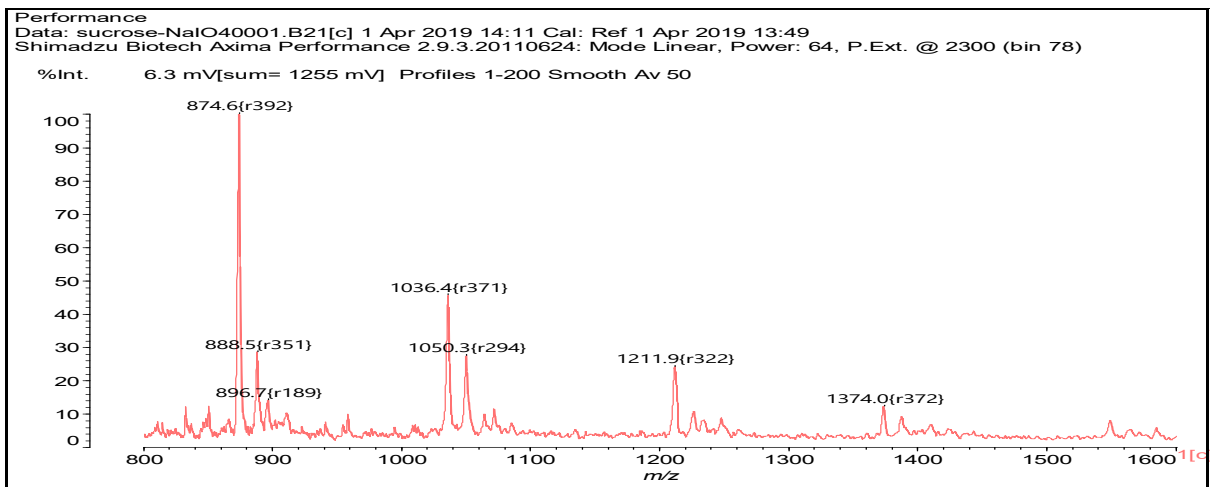
(b)



(c)



(d)



(e)