

Supplementary information

Information S1: list of kinase and cyclin gene symbols (red: not included in the GLP570 platform)

Kinases

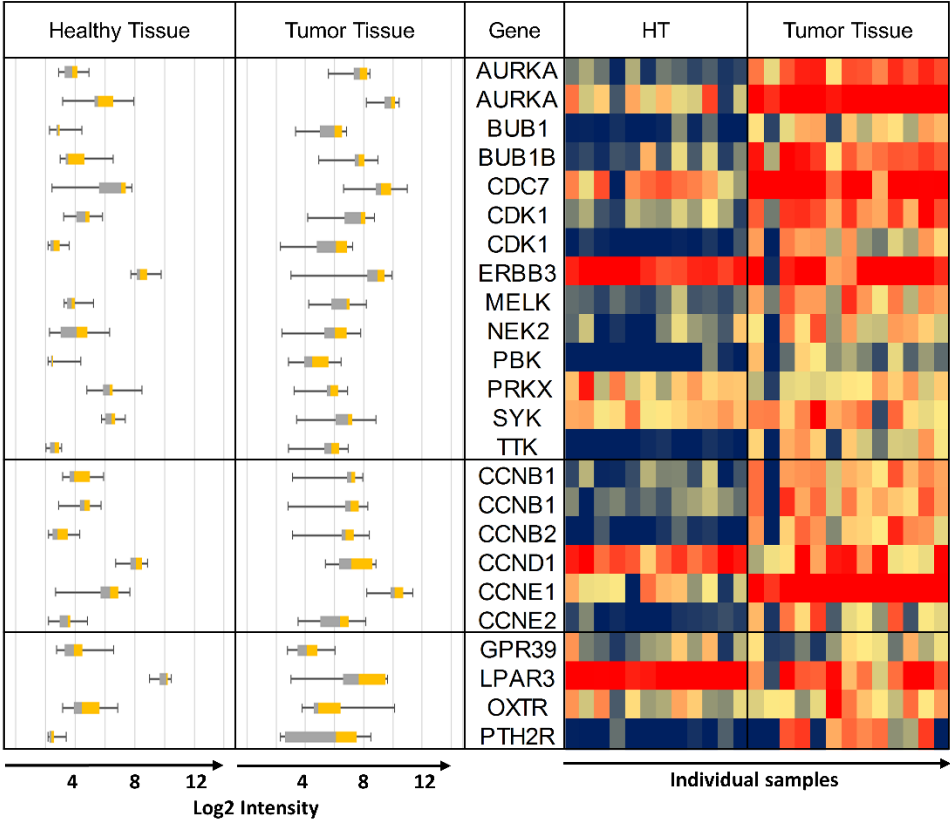
AAK1, AATK, ABL1, ABL2, ACVR1, ACVR1B, ACVR1C, ACVR2A, ACVR2B, ACVRL1, ADCK1, ADCK2, ADCK5, AKT1, AKT2, AKT3, ALK, ALPK1, ALPK2, ALPK3, AMHR2, **ANKK1**, ARAF, ATM, ATR, AURKA, AURKB, AURKC, AXL, BCKDK, BLK, BMP2K, BMPR1A, BMPR1B, BMPR2, BMX, BRAF, BRSK1, BRSK2, BTK, BUB1, BUB1B, CAMK1, CAMK1D, CAMK1G, CAMK2A, CAMK2B, CAMK2D, CAMK2G, CAMK4, CAMKK1, CAMKK2, CAMKV, CASK, CDC42BPA, CDC42BPB, CDC42BPG, CDC7, CDK1, CDK10, CDK11A, CDK11B, CDK12, CDK13, CDK14, CDK15, CDK16, CDK17, CDK18, CDK19, CDK2, CDK20, CDK3, CDK4, CDK5, CDK6, CDK7, CDK8, CDK9, CDKL1, CDKL2, CDKL3, **CDKL4**, CDKL5, CHEK1, CHEK2, CHUK, CIT, CLK1, CLK2, CLK3, CLK4, **COQ8A**, **COQ8B**, CSF1R, CSK, CSNK1A1, **CSNK1A1L**, CSNK1D, CSNK1E, CSNK1G1, CSNK1G2, CSNK1G3, CSNK2A1, CSNK2A2, **CSNK2A3**, DAPK1, DAPK2, DAPK3, DCLK1, DCLK2, DCLK3, DDR1, DDR2, DMPK, DSTYK, DYRK1A, DYRK1B, DYRK2, DYRK3, DYRK4, EEF2K, EGFR, EIF2AK1, EIF2AK2, EIF2AK3, EIF2AK4, EPHA1, EPHA10, EPHA2, EPHA3, EPHA4, EPHA5, EPHA6, EPHA7, EPHA8, EPHB1, EPHB2, EPHB3, EPHB4, EPHB6, ERBB2, ERBB3, ERBB4, ERN1, ERN2, FASTK, FER, FES, FGFR1, FGFR2, FGFR3, FGFR4, FGR, FLT1, FLT3, FLT4, FRK, FYN, GAK, **Gm4922**, **Gm7168**, GRK1, **GRK2**, **GRK3**, GRK4, GRK5, GRK6, GRK7, GSK3A, GSK3B, **HASPIN**, HCK, HIPK1, HIPK2, HIPK3, HIPK4, HUNK, ICK, IGF1R, IKBKB, IKBKE, ILK, INSR, INSR, IRAK1, IRAK2, IRAK3, IRAK4, ITK, JAK1, JAK2, JAK3, KALRN, KDR, KIT, KSR1, KSR2, LATS1, LATS2, LCK, LIMK1, LIMK2, LMTK2, LMTK3, LRRK1, LRRK2, LTK, LYN, MAK, MAP2K1, MAP2K2, MAP2K3, MAP2K4, MAP2K5, MAP2K6, MAP2K7, MAP3K1, MAP3K10, MAP3K11, MAP3K12, MAP3K13, MAP3K14, MAP3K15, MAP3K19, MAP3K2, **MAP3K20**, **MAP3K21**, MAP3K3, MAP3K4, MAP3K5, MAP3K6, MAP3K7, MAP3K8, MAP3K9, MAP4K1, MAP4K2, MAP4K3, MAP4K4, MAP4K5, MAPK1, MAPK10, MAPK11, MAPK12, MAPK13, MAPK14, MAPK15, MAPK3, MAPK4, MAPK6, MAPK7, MAPK8, MAPK9, MAPKAP2, MAPKAP3, MAPKAP5, MARK1, MARK2, MARK3, MARK4, MAST1, MAST2, MAST3, MAST4, MASTL, MATK, MELK, MERTK, MET, MINK1, MKNK1, MKNK2, MLKL, MOK, MOS, MST1R, MTOR, MUSK, MYLK, MYLK2, MYLK3, MYLK4, MYO3A, MYO3B, NEK1, NEK10, NEK11, NEK2, NEK3, NEK4, NEK5, NEK6, NEK7, NEK8, NEK9, NIM1K, NLK, NRBP1, NRBP2, NRK, NTRK1, NTRK2, NTRK3, NUA1, NUA2, OBSCN, OXSR1, PAK1, PAK2, PAK3, PAK4, **PAK5**, PAK6, PAN3, PASK, PBK, PDGFRA, PDGFRB, PDIK1L, PDK1, PDK2, PDK3, PDK4, PDPK1, **PDPK2P**, PEAK1, PHKG1, PHKG2, PIK3CA, PIK3CG, PIK3R4, PIM1, PIM2, PIM3, PINK1, PKDCC, PKMYT1, PKN1, PKN2, PKN3, PLK1, PLK2, PLK3, PLK4, PLK5, PNCK, POMK, **PRAG1**, PRKAA1, PRKAA2, PRKACA, PRKACB, PRKACG, PRKCA, PRKCB, PRKCD, PRKCE, PRKCG, PRKCH, PRKCI, PRKCQ, PRKCZ, PRKD1, PRKD2, PRKD3, PRKDC, PRKG1, PRKG2, PRKX, PRKY, PRPF4B, PSKH1, PSKH2, PTK2, PTK2B, PTK6, PTK7, PXX, RAF1, RET, RIOK1, RIOK2, RIOK3, RIPK1, RIPK2, RIPK3, RIPK4, RNASEL, ROCK1, ROCK2, ROR1, ROR2, ROS1, RPS6KA1, RPS6KA2, RPS6KA3, RPS6KA4, RPS6KA5, RPS6KA6, RPS6KB1, RPS6KB2, RPS6KC1, RPS6KL1, RYK, SBK1, **SBK2**, **SBK3**, SCYL1, SCYL2, SCYL3, SGK1, SGK2, SGK3, SGK494, SIK1, SIK2, SIK3, SLK, SMG1, **Smok1**, **Smok2a**, **Smok2b**, **Smok3a**, **Smok3b**, **Smok4a**, **Smoktcr**, SNRK, SPEG, SRC, SRMS, SRPK1, SRPK2, SRPK3, STK10, STK11, STK16, STK17A, STK17B, STK24, STK25, STK26, STK3, STK31, STK32A, STK32B, STK32C, STK33, STK35, STK36, STK38, STK38L, STK39, STK4, STK40, STKLD1, **Stk-ps2**, STRADA, STRADB, STYK1, SYK, TAOK1, TAOK2, TAOK3, TBCK, TBK1, TEC, TEK, TESK1, TESK2, TEX14, TGFBR1, TGFBR2, TIE1, TLK1, TLK2, TNIK, TNK1, TNK2, TNNT3, TP53RK, TRIB1, TRIB2, TRIB3, TRIO, TRPM6, TRPM7, TSSK1B, TSSK2, TSSK3, TSSK4, **Tssk5**, TSSK6, TTBK1, TTBK2, TTK, TTN, TXK, TYK2, TYRO3, UHMK1, ULK1, ULK2, ULK3, ULK4, VRK1, VRK2, VRK3, WEE1, **WEE2**, WNK1, WNK2, WNK3, WNK4, YES1, ZAP70

Cyclins

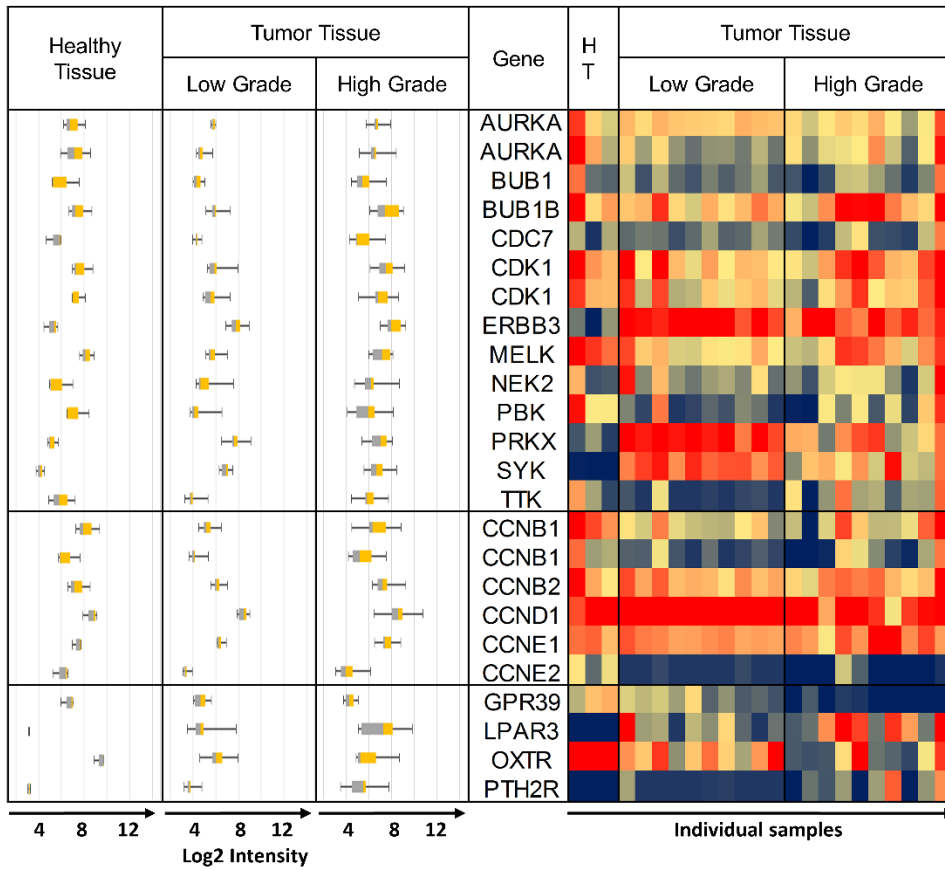
CCNA1, CCNA2, CCNB1, CCNB2, CCNB3, CCNC, CCND1, CCND2, CCND3, CCNE1, CCNE2, CCNF, CCNG1, CCNG2, CCNH, CCNI, **CCNI2**, CCNJ, CCNJL, CCNK, CCNL1, CCNL2, CCNO, **CCNQ**, CCNT1, CCNT2, CCNY, CCNYL1, CCNYL2, **CCNYL3**, CDK5R1, CDK5R2

Figure S2 (pages 2-6): Heat maps and whisker plots for GSE10971, GSE14401, GSE14407, GSE18520, GSE27651, GSE29450, GSE52037, GSE54388 and GSE105437.

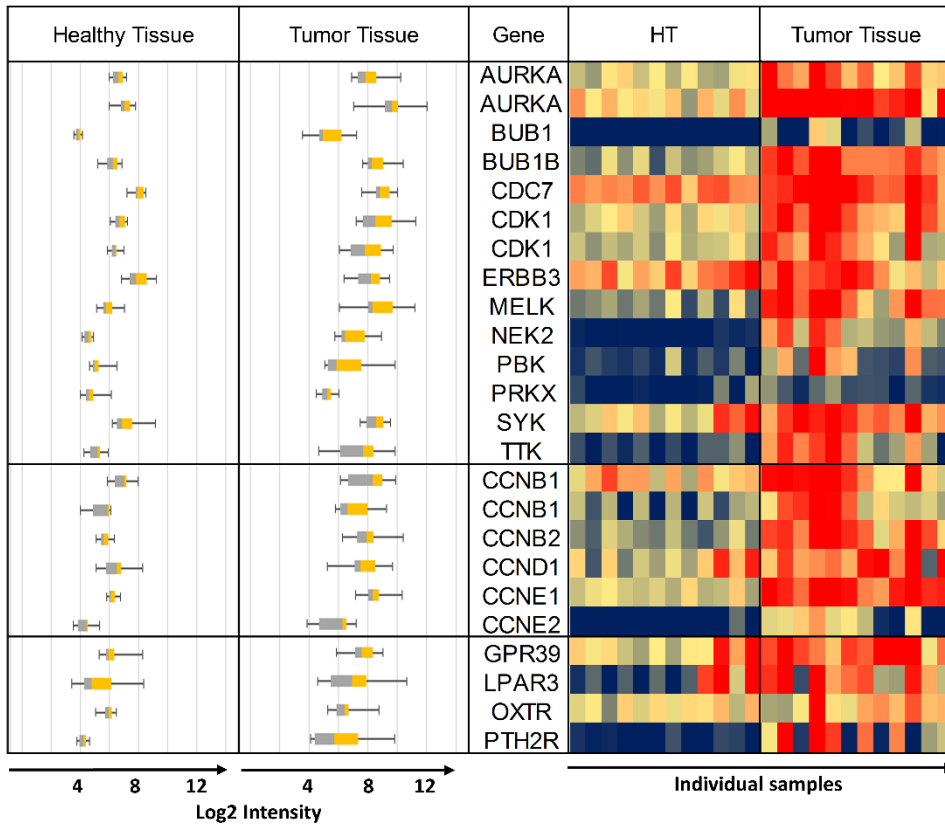
GSE10971



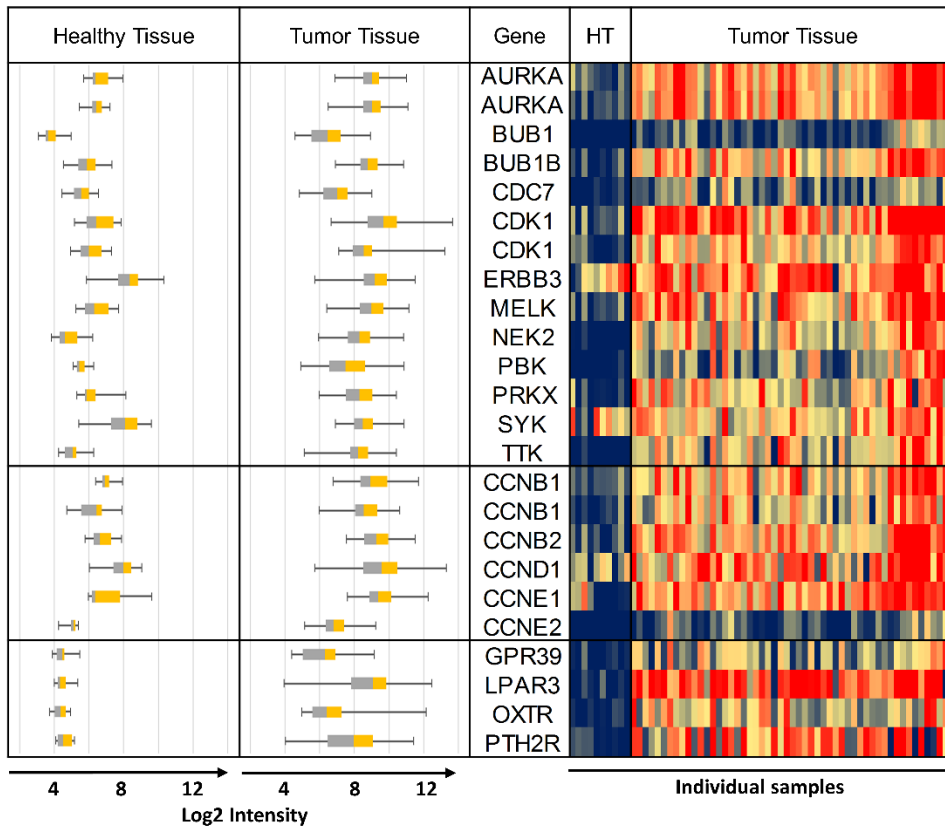
GSE14401



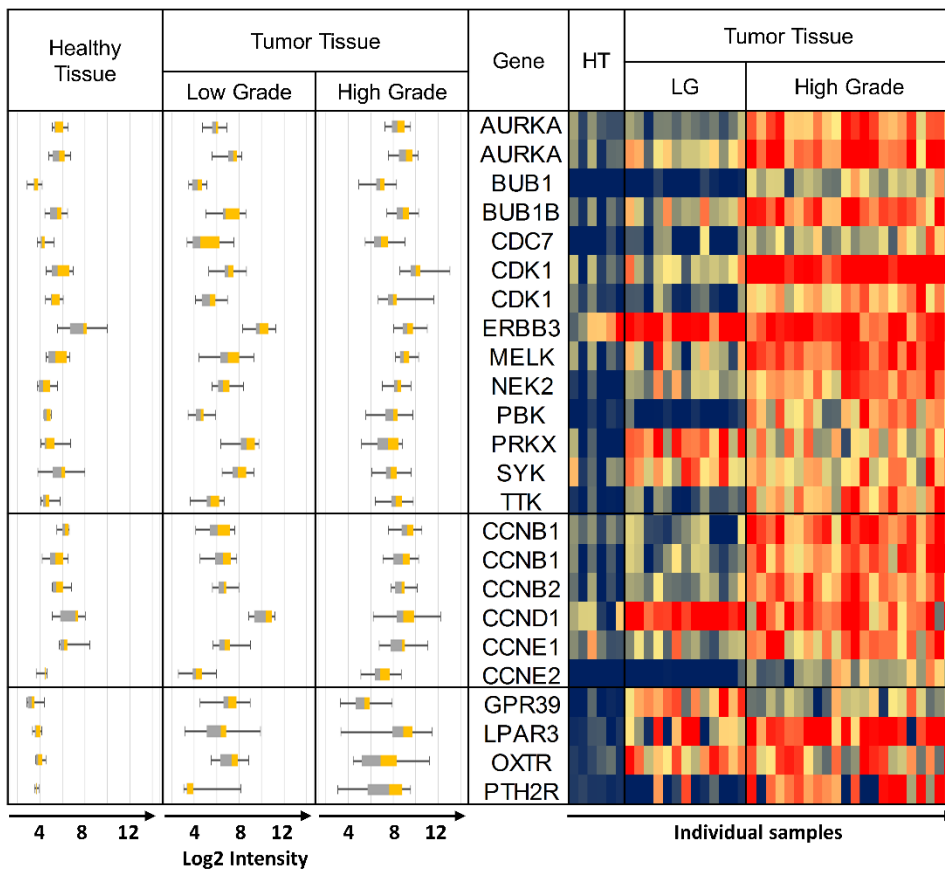
GSE14407



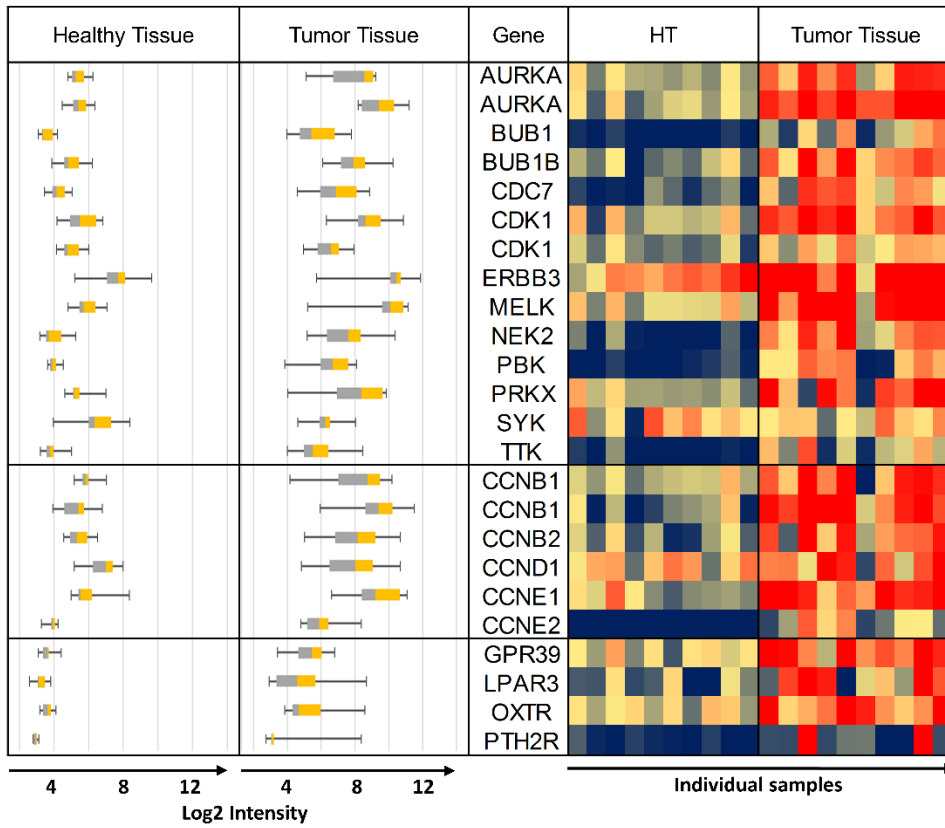
GSE18520



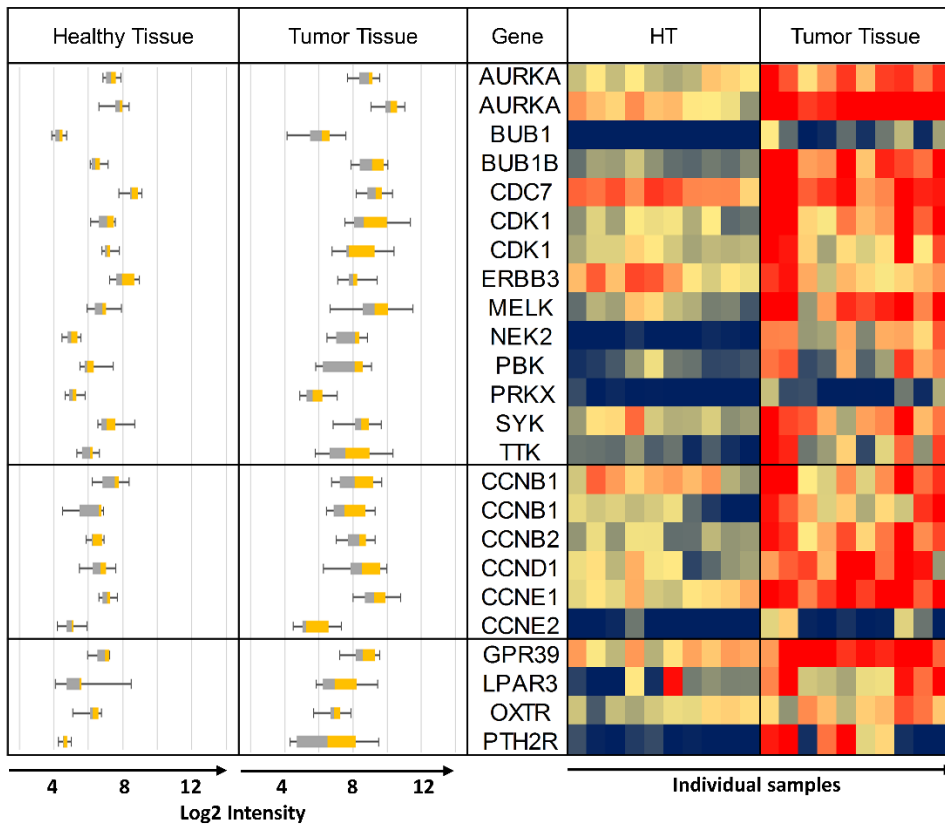
GSE27651



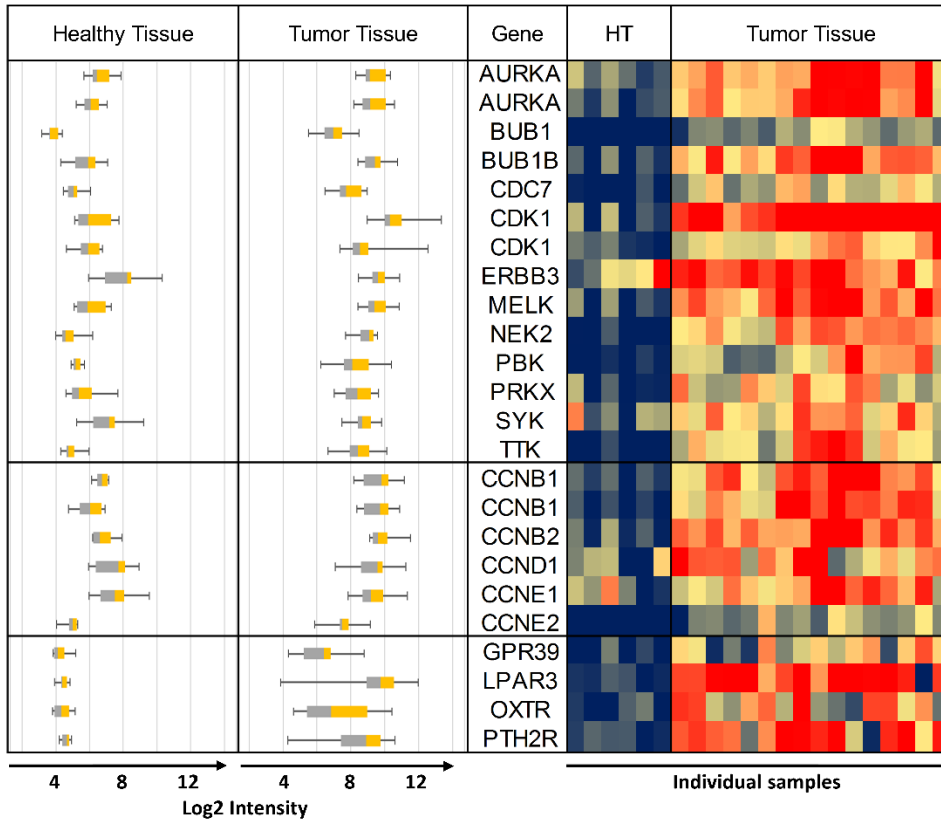
GSE29450



GSE52037



GSE54388



GSE105437

