

Figure S1. Western blot analysis of SPDEF expression in DU-145 prostate cancer cells with MAB9916 clone 4A5. SPDEF, SAM pointed domain-containing Ets transcription factor.

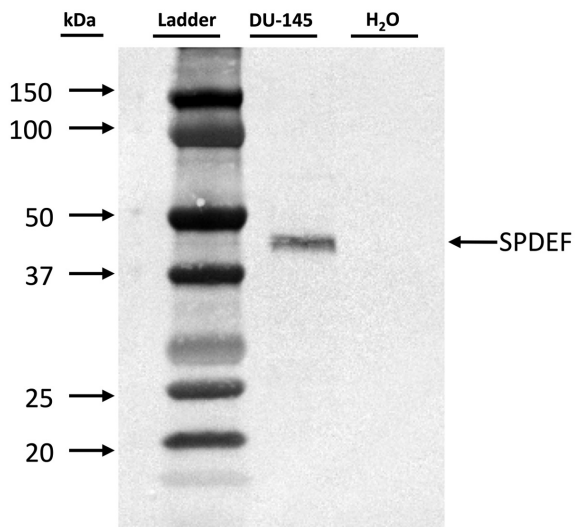


Table SI. Cox proportional hazards for PSA recurrence-free survival after prostatectomy of established preoperative prognostic parameter and SPDEF expression.

| Variable | Comparison | Number, n | Univariate analysis | Multivariate analysis (n=8,336) |
|------------------------|---------------------|-----------|-------------------------------|---------------------------------|
| Gleason grade biopsy | ≥4+4 vs. ≤3+3 | 12,172 | 5.91 (5.33-6.55) ^c | 4.16 (3.67-4.72) ^c |
| cT-stage | T3a vs. T1c | 14,404 | 2.15 (1.72-2.65) ^c | 1.40 (1.05-1.83) ^a |
| Preoperative PSA-level | ≥20 vs. <4 | 14,611 | 5.06 (4.41-5.81) ^c | 3.50 (2.90-4.24) ^c |
| SPDEF expression | Strong vs. negative | 8,630 | 1.99 (1.72-2.30) ^c | 1.66 (1.43-1.93) ^c |
| ERG negative subset | Strong vs. negative | 4,166 | 2.51 (2.03-3.10) ^c | - |
| ERG positive subset | Strong vs. negative | 3,443 | 1.70 (1.25-2.35) ^b | - |

^aP≤0.05, ^bP≤0.001, ^cP≤0.0001. The confidence interval (95%) is indicated in brackets. ERG, ETS-related gene; PSA, prostate-specific antigen; SPDEF, SAM pointed domain-containing Ets transcription factor.