

Figure S1. Subgroup analysis in the PVR group before propensity score matching. Subgroup analysis in PVR group for various factors, including (A) PV invasion, (B) TNM stage, (C) LN metastasis, (D) BMI (kg/m<sup>2</sup>), (E) ALB (g/l), (F) R1 resection (microscopic positive margin), (G) CA 125 (U/ml) and (H) CA 19-9 (U/ml) before propensity score matching. PV, portal vein; PVR, portal vein resection; TNM, Tumor-Node-Metastasis; BMI, body mass index; ALB, albumin; CA 125, carbohydrate antigen 125; CA 19-9, carbohydrate antigen 19-9; LN, lymph node.

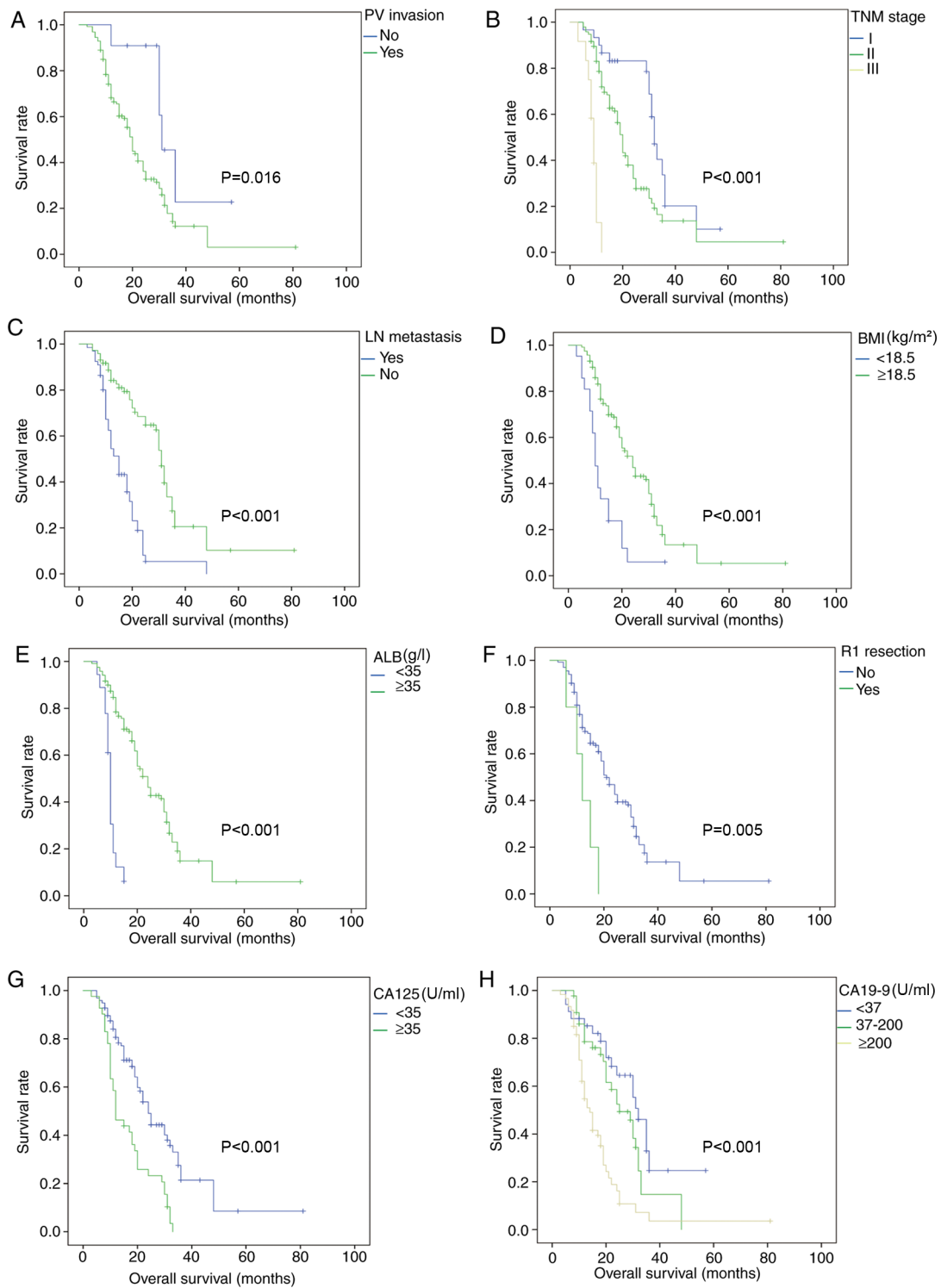


Figure S2. Subgroup analysis in the PVR group after propensity score matching. Subgroup analysis for various factors, including (A) PV invasion, (B) TNM stage, (C) LN metastasis, (D) BMI ( $\text{kg}/\text{m}^2$ ), (E) ALB ( $\text{g}/\text{l}$ ), (F) R1 resection (microscopic positive margin), (G) CA 125 ( $\text{U}/\text{ml}$ ) and (H) CA 19-9 ( $\text{U}/\text{ml}$ ) after propensity score matching. PV, portal vein; PVR, portal vein resection; TNM, Tumor-Node-Metastasis; BMI, body mass index; ALB, albumin; CA 125, carbohydrate antigen 125; CA 19-9, carbohydrate antigen 19-9; LN, lymph node.

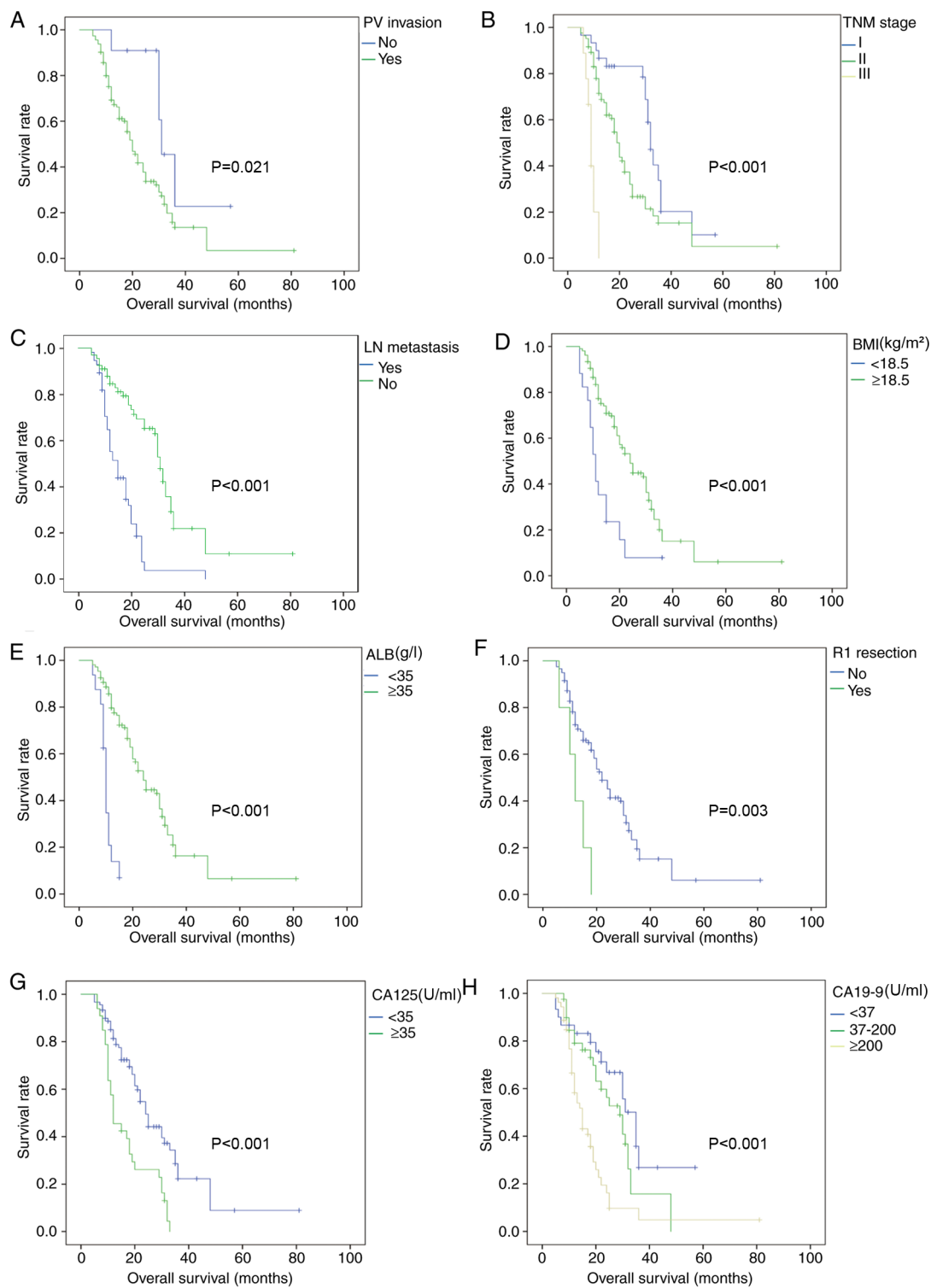


Figure S3. Subgroup analysis in the non-PVR group before propensity score matching. Subgroup analysis for various factors, including (A) TNM stage, (B) LN metastasis, (C) BMI (kg/m<sup>2</sup>), (D) ALB (g/l), (E) R1 resection (microscopic positive margin), (F) CA 125 (U/ml) and (G) CA 19-9 (U/ml) before propensity score matched. PV, portal vein; PVR, portal vein resection; TNM, Tumor-Node-Metastasis; BMI, body mass index; ALB, albumin; CA 125, carbohydrate antigen 125; CA 19-9, carbohydrate antigen 19-9; LN, lymph node.

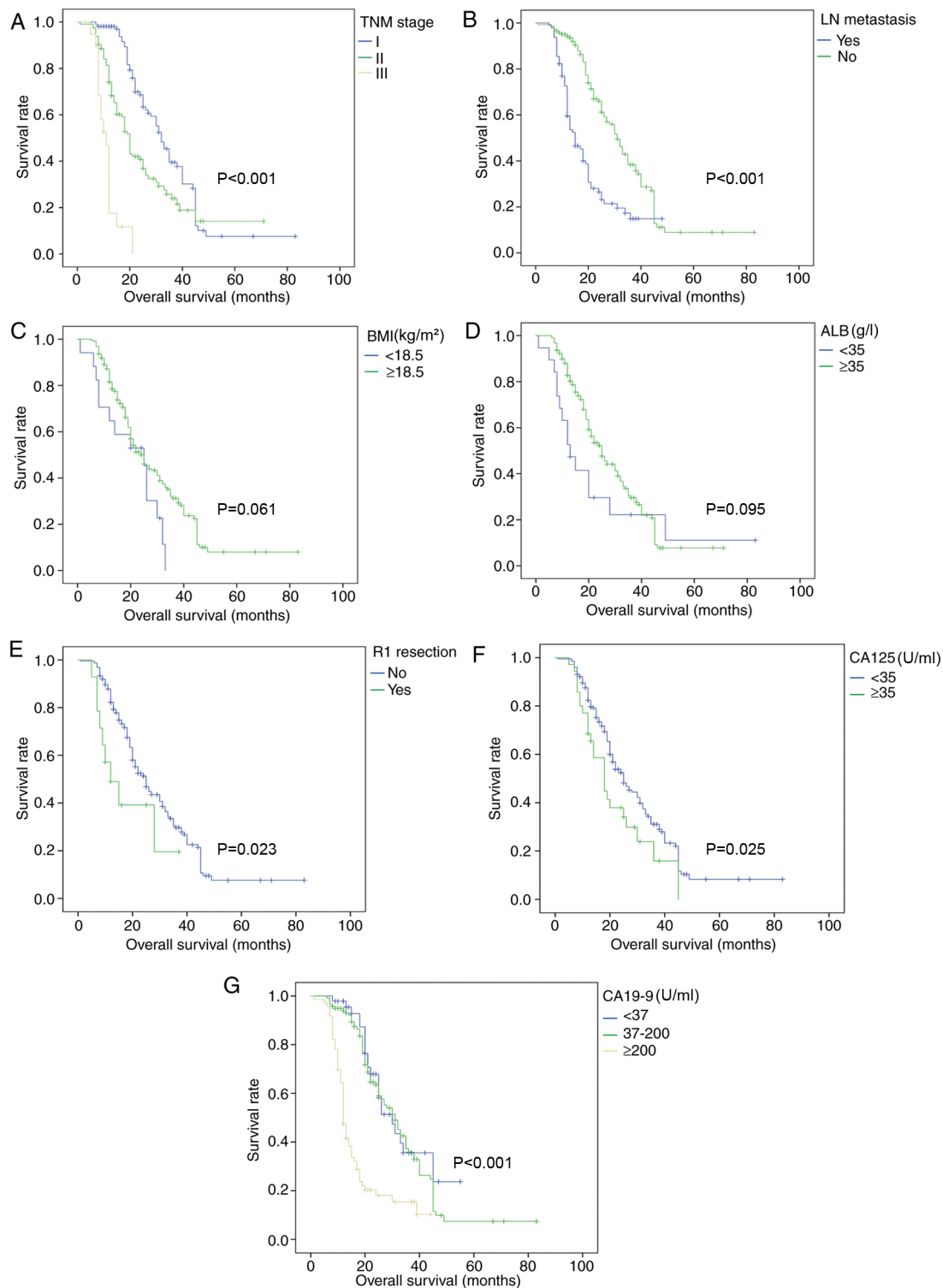


Figure S4. Subgroup analysis in the non-PVR group after propensity score matching. Subgroup analysis for various factors, including (A) TNM stage, (B) LN metastasis, (C) BMI (kg/m<sup>2</sup>), (D) ALB (g/l), (E) R1 resection (microscopic positive margin), (F) CA 125 (U/ml) and (G) CA 19-9 (U/ml) after propensity score matching. PV, portal vein; PVR, portal vein resection; TNM, Tumor-Node-Metastasis; BMI, body mass index; ALB, albumin; CA 125, carbohydrate antigen 125; CA 19-9, carbohydrate antigen 19-9; LN, lymph node.

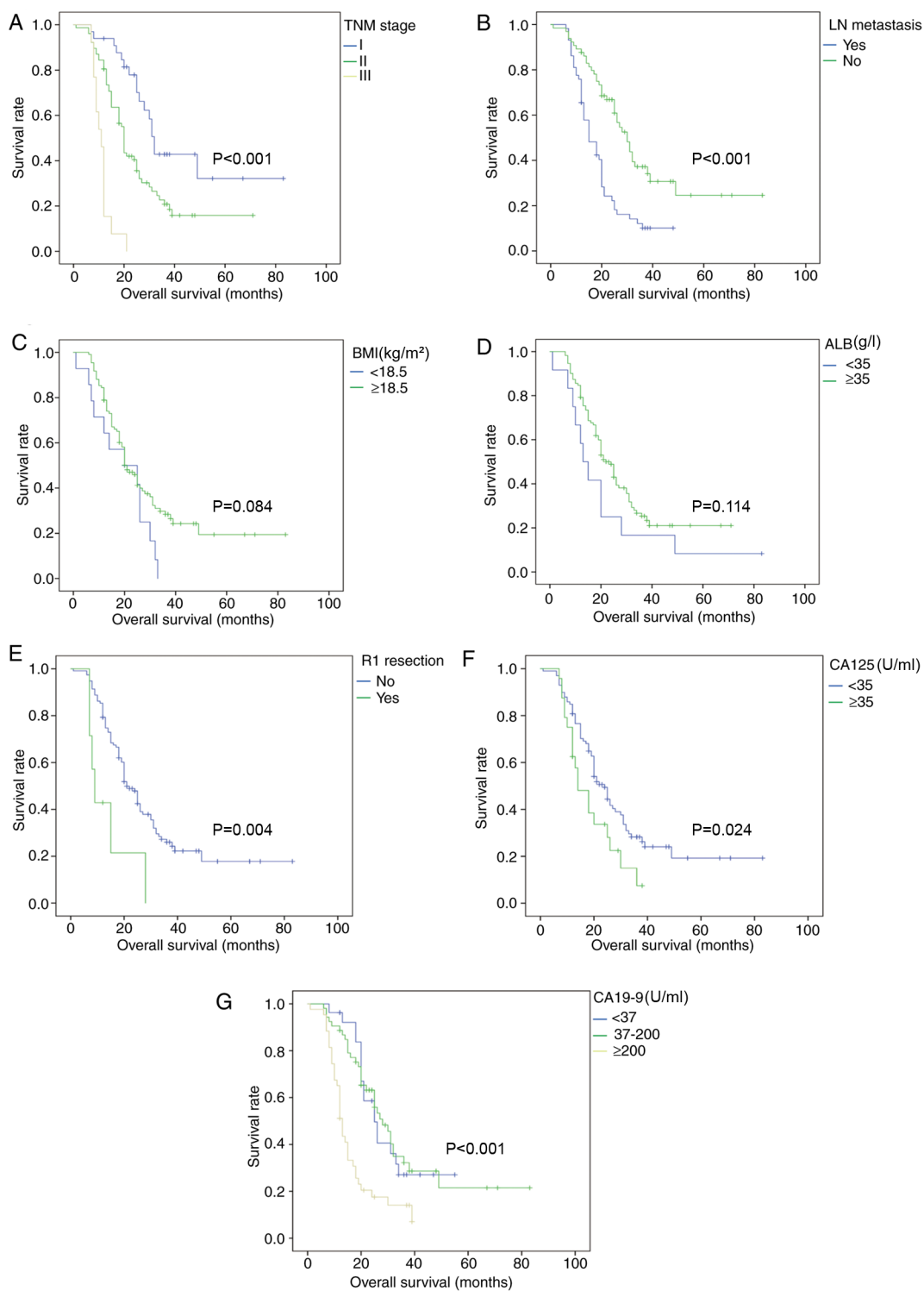


Table S1. Subgroup analysis of the PVR group.

Risk factors	Before PSM				After PSM			
	HR	95% CI	P-value	Overall survival Months (mean ± SD)	HR	95% CI	P-value	Overall survival Months (mean ± SD)
PV invasion								
Yes	2.771	1.123-6.838	0.010	26.368±1.775 36.015±5.064	2.694	1.087-6.677	0.032	23.994±1.956 36.015±5.064
No								
TNM stage								
Stage I	3.335	2.042-5.449	<0.001	32.894±2.790	2.972	1.794-4.926	<0.001	32.894±2.790
Stage II				23.930±2.278				24.200±2.541
Stage III				8.565±0.729				9.133±0.719
BMI, kg/m <sup>2</sup>								
<18.5	0.34	0.203-0.569	<0.001	12.833±1.745	0.355	0.201-0.629	<0.001	13.529±2.047
≥18.5				26.688±2.061				27.488±2.267
R1 resection								
No	3.371	1.340-8.477	0.01	25.624±1.995	3.581	1.413-9.073	0.007	26.532±2.193
Yes				12.200±2.059				12.200±2.059
LN metastasis								
Yes	0.268	0.170-0.421	<0.001	16.438±1.336	0.27	0.166-0.437	<0.001	16.259±1.322
No				32.931±3.161				33.451±3.360
ALB, g/l								
<35	0.153	0.082-0.287	<0.001	9.967±0.622	0.149	0.076-0.292	<0.001	10.097±0.693
≥35				27.137±2.117				27.993±2.313
CA 125, U/ml								
<35	2.494	1.632-3.811	<0.001	29.671±2.820	2.532	1.593-4.023	<0.001	30.095±2.945
≥35				16.659±1.451				16.836±1.646
CA 19-9, U/ml								
<37	1.945	1.468-2.579	<0.001	32.488±3.417	1.931	1.421-2.624	<0.001	33.244±3.726
37-200				26.219±2.124				26.670±2.273
>200				17.794±2.276				18.908±2.760

BMI, body mass index; SD, standard deviation; HR, hazard ratio; CI, confidence interval; TNM, Tumor-Node-Metastasis; PSM, propensity score matching; PVR, portal vein resection; ALB, albumin; CA 125, carbohydrate antigen 125; CA 19-9, carbohydrate antigen 19-9; LN, lymph node.

Table SII. Subgroup analysis of the non-PVR group.

Risk factors	Before PSM				After PSM					
	Cox regression analysis		Overall survival		Cox regression analysis		Overall survival			
	HR	95% CI	P-value	Months (mean ± SD)	P-value	HR	95% CI	P-value	Months (mean ± SD)	P-value
TNM										
Stage I	2.448	1.850– 3.239	<0.001	34.971±2.120	<0.001	3.058	1.994-4.691	<0.001	45.521±5.812	<0.001
Stage II				27.201±2.434					27.413±2.626	
Stage III				11.275±1.025					11.231±1.020	
BMI, kg/m <sup>2</sup>										
<18.5	0.598	0.343-1.041	0.069	19.937±2.729	0.061	0.603	0.333-1.093	0.095	19.190±2.943	0.084
≥18.5				29.977±1.724					32.961±3.111	
R1 resection										
No	2.128	1.080-4.192	0.029	29.757±1.659	0.023	3.161	1.361-7.341	0.007	32.165±2.897	0.004
Yes				18.469±3.448					13.643±3.558	
LN metastasis										
Yes	0.377	0.271-0.524	<0.001	20.337±1.512	<0.001	0.4	0.258-0.619	<0.001	19.303±1.616	<0.001
No				34.248±2.014					38.975±4.128	
ALB, g/l										
<35	0.647	0.378-1.107	0.112	24.457±6.157	0.095	0.607	0.320-1.150	0.125	22.250±6.293	0.114
≥35				28.961±1.391					30.694±2.387	
CA 125, U/ml										
<35	1.61	1.046-2.478	0.03	30.366±1.786	0.025	1.769	1.056-2.963	0.03	33.281±3.175	0.024
≥35				21.924± 2.449					18.927±2.149	
CA 19-9, U/ml										
<37	2.365	1.797-3.111	<0.001	33.498±2.708	<0.001	1.856	1.345-2.561	<0.001	31.353±3.193	<0.001
37-200				33.212±2.032					37.090±4.349	
>200				17.218±1.480					16.553±1.680	

BMI, body mass index; SD, standard deviation; HR, hazard ratio; CI, confidence interval; TNM, Tumor-Node-Metastasis; PSM, propensity score matching; PVR, portal vein resection; ALB, albumin; CA 125, carbohydrate antigen 125; CA 19-9, carbohydrate antigen 19-9; LN, lymph node.