

Figure S1. Effect of kinase insert domain receptor rs1870377 on PFS in patients with different genotypes. (A) AA vs. TT. (B) AT vs. TT. P-values were obtained by log-rank tests. PFS, progression-free survival.

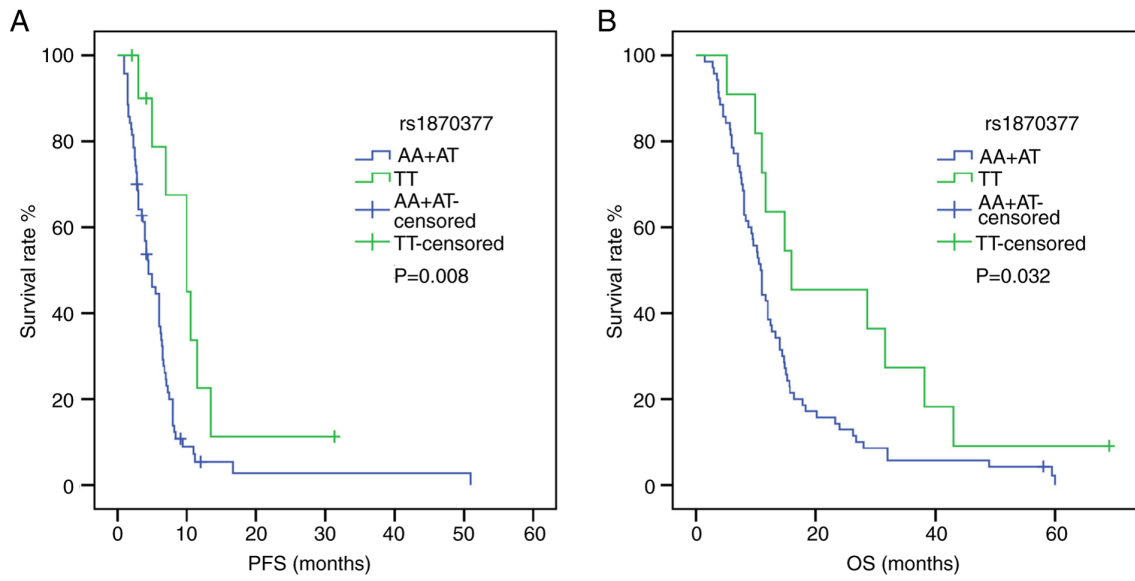


Table SI. MAF of selected SNPs.

Gene	SNP	MAF in 1000 genomes project
<i>KDR</i>	rs7692791	C=0.3738
	rs2305948	T=0.1408
	rs6838752	C=0.4854
	rs2034965	A=0.2087
	rs13109660	A=0.3058
	rs1870377	A=0.4951
	rs1531290	G=0.2330
<i>NRP1</i>	rs2070296	A=0.4660
	rs2804495	G=0.3835
	rs2065364	A=0.2961
<i>PDGFβ</i>	rs4821877	T=0.3447
	rs9622978	T=0.2184
<i>PDGFRα</i>	rs6554162	A=0.3398
	rs1800812	T=0.2670
<i>PDGFβ</i>	rs2302273	A=0.0971

MAF, minor allele frequency; KDR, kinase insert domain receptor; NRP1, neuropilin-1; PDGF, platelet-derived growth factor; PDGFR, PDGF receptor; SNP, single nucleotide polymorphism.

Table SII. Primers of SNPs for PCR amplification.

SNP	Primers for PCR amplification (5'-3')	Product size, bp
rs7692791-F	ATTCCCTTAAATTGTGTGTGTGTG	199
rs7692791-R	ACTTCAACTGGGAATACCCTTCTT	
rs2305948-F	AAGGCACAGAATAATTTCCAAGAC	197
rs2305948-R	CTTGTAACCGAGACCTAAAAACC	
rs6838752-F	GTGACCATACATCCCAATTTAACA	201
rs6838752-R	TCAGATGTTGGATTCTGGTTTAGA	
rs2034965-F	AAGCAGATCACCTCTCACTACCTC	202
rs2034965-R	TGCACTTGTCAAATAACACAGAGA	
rs13109660-F	AAGTTTCCCTGGTTCAAGCTAATA	196
rs13109660-R	CAGGTGCTATGCAAAGATTACTGT	
rs1870377-F	AATTTTATTTCCCTCCCTGGAAGTC	201
rs1870377-R	GTAGGCTGCGTTGGAAGTTATTT	
rs1531290-F	CAAGTATGAAGCAATGGCAATAAC	211
rs1531290-R	TAAATTTTGCCTTTCAACCCTTAC	
rs2804495-F	TCTGCTCCTCTGCAGAACTTAGTA	198
rs2804495-R	CATCCTGATTGTAAGAGTCAGTGG	
rs2065364-F	TCAGCACTGAGTTACCAATGAGAT	184
rs2065364-R	ACAGTCCAATCGATTCTTTGAAAT	
rs9622978-F	CCTTAATAGAGAAATCACCCCTCA	201
rs9622978-R	TTGTTAGGGACAGGACAATCTTTT	
rs2070296-F	AGGTTATTTCTTGGGGAAGTTGTT	200
rs2070296-R	CCAGGATAATCTCTGACATCTTTG	
rs4821877-F	TCTACGGTCTCCTTTAGGTCTCTG	201
rs4821877-R	GTAAAGAAGTAGGCGAGGTCACAC	
rs6554162-F	ATATTTGCCTTCAATGATTCCTG	218
rs6554162-R	GAGTCACAGAGAAGTACTCCAACG	
rs1800812-F	ATTCCAAGGAATTCGTAGGGTTC	206
rs1800812-R	CTTGAAGTCACTTATCTGGTCGTG	
rs2302273-F	CAGAGTGGGTAACAGCTGAGTAGA	266
rs2302273-R	AGATCAACAAGGAGGAGGAGAGAG	

F, forward; R, reverse; PCR, polymerase chain reaction; SNP, single nucleotide polymorphism.

Table III. Genotype and proportion of selected SNPs.

Gene	SNP	Genotype	n (%)
<i>KDR</i>	rs7692791	TT	38 (46.9)
		CT	34 (42.0)
		CC	9 (11.1)
	rs2305948	CC	63 (77.8)
		CT	17 (21.0)
		TT	1 (1.2)
	rs6838752	CC	10 (12.3)
		CT	40 (49.4)
		TT	27 (33.3)
	rs2034965	GG	54 (66.7)
		GA	22 (27.2)
		AA	5 (6.2)
	rs13109660	GG	37 (45.7)
		GA	36 (44.4)
		AA	8 (9.9)
	rs1870377	AA	28 (34.6)
		AT	42 (51.9)
		TT	11 (13.6)
rs1531290	AA	36 (44.4)	
	GA	38 (46.9)	
	GG	3 (3.7)	
<i>NRP1</i>	rs2070296 ^a	GG	11 (13.9)
		GA	47 (59.5)
		AA	21 (26.6)
	rs2804495	TT	24 (29.6)
		GT	39 (48.1)
		GG	18 (22.2)
	rs2065364	GG	34 (42.0)
		GA	40 (49.4)
		AA	7 (8.6)
<i>PDGFβ</i>	rs4821877	CC	41 (50.6)
		CT	33 (40.7)
		TT	7 (8.6)
<i>PDGFRα</i>	rs6554162	AA	8 (9.9)
		GA	36 (44.4)
		GG	37 (45.7)

^aGenotypes of 2 patients were lost for this SNP. KDR, kinase insert domain receptor; NRP1, neuropilin-1; PDGF, platelet-derived growth factor; PDGFR, PDGF receptor; SNP, single nucleotide polymorphism.