

Figure S1. Immunofluorescent staining of RT4 and 5637 cells in 2D adherent culture. Representative images of immunocytochemistry using anti-CK20 and CK14 antibodies in RT4 and 5637 cells grown in 2D adherent culture. DNA was counterstained with hochechst33342. Scale bar; 100 μ m. CK, cytokeratin.

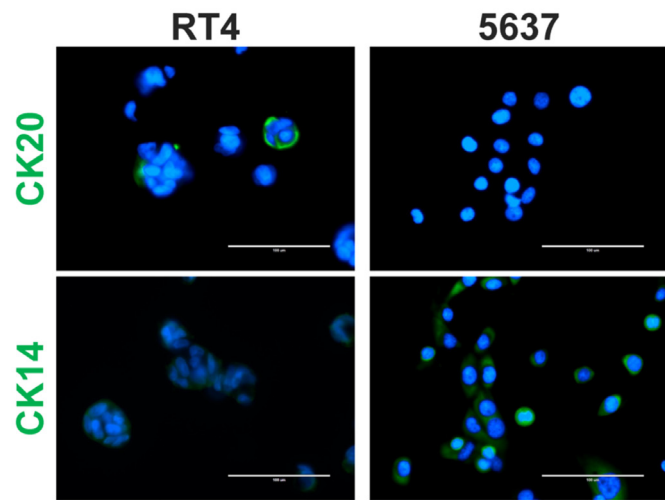


Figure S2. Gene expression levels of luminal and basal markers measured by RT-q PCR analysis in RT4 and 5637 cells grown in 2D adherent culture and in 3D suspension culture. RT-qPCR shows mRNA expression levels of luminal markers (CK20, CK18) and basal markers (CK14, CK5) of RT4 and 5637 cells grown in 2D adherent culture and in 3D suspension culture. GAPDH was used as a reference gene. Values represent the mean \pm SD from 3 independent experiments. Bars represent the expression levels of the indicated genes in 2D adherent culture (2D, white) and 3D suspension culture (3D, black). The expression levels were statistically compared between 2D and 3D cultures using the unpaired t-test. * $P < 0.05$, ** $P < 0.01$, *** $P < 0.001$, **** $P < 0.0001$ vs. 2D culture. RT-qPCR, reverse transcription-quantitative polymerase chain reaction. GAPDH, glyceraldehyde 3-phosphate dehydrogenase.

