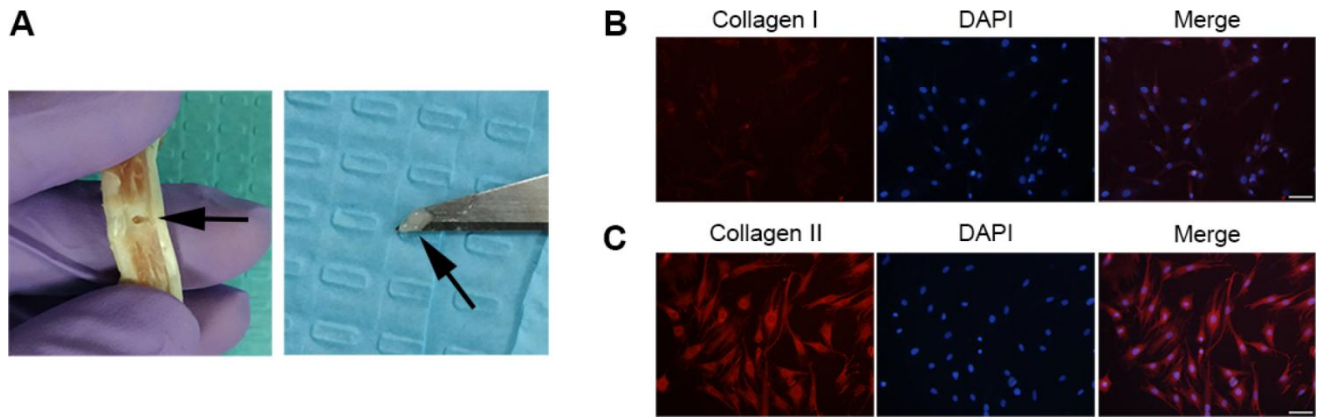


## SUPPLEMENTARY FIGURE



**Supplementary Figure 1. Extraction steps and identification methods of NPCs.** (A) The gel-like NP tissues were separated from the tails of rats using a pointed blade. (B, C) Immunofluorescence results of Collagen I and Collagen II in NPCs (scale bar: 50 $\mu$ m).