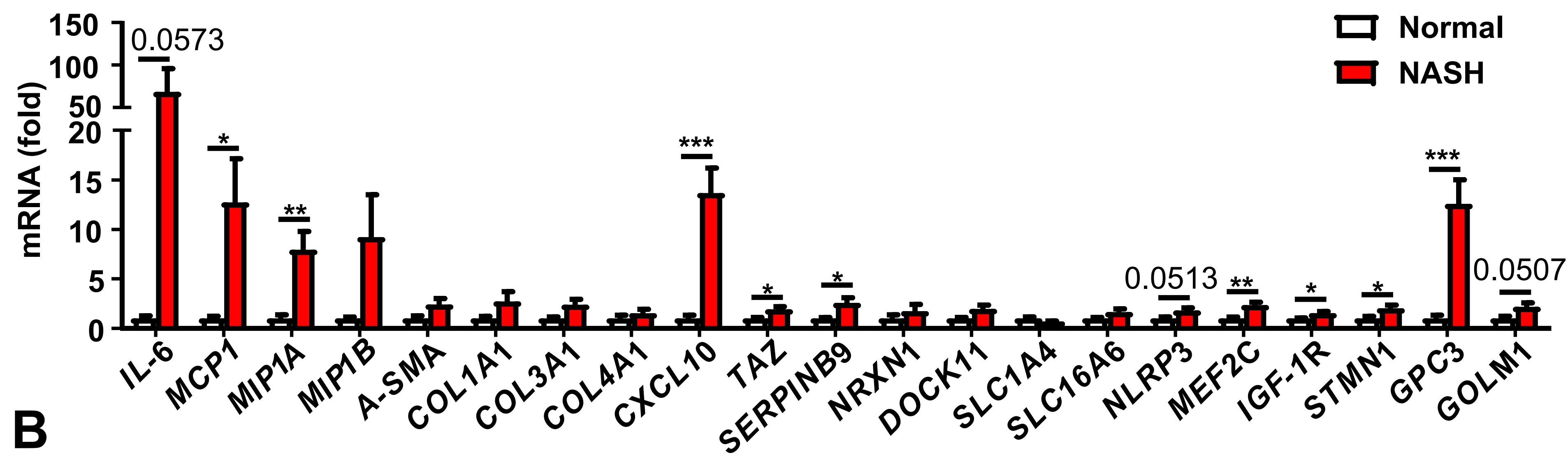
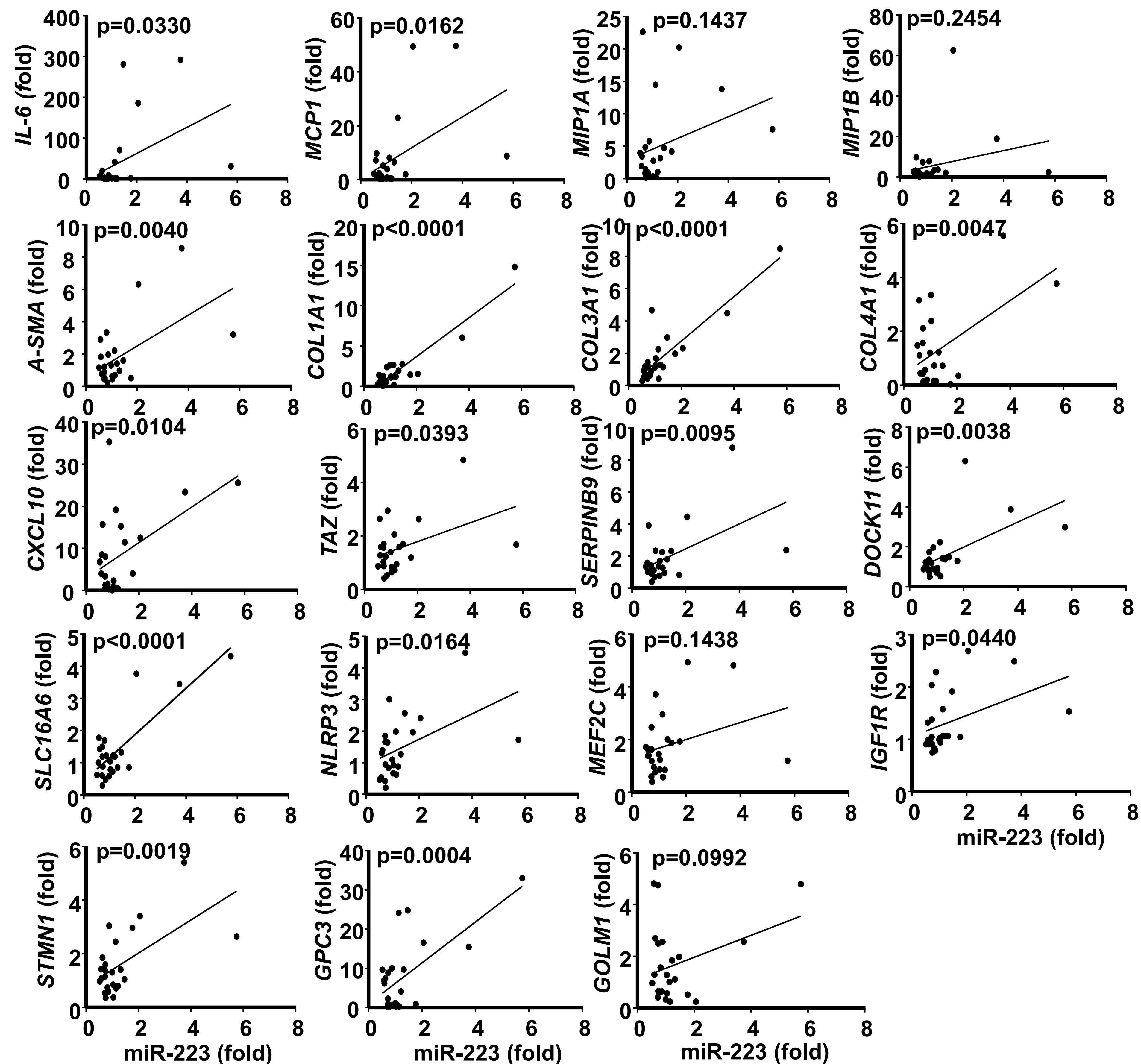


Supporting Fig. S16

A

B


Supporting Fig. S16. Several cytokine genes, chemokine genes, fibrogenesis genes, and potential and proven miR-223 targeted genes positively correlate with miR-223 levels in NASH patients. (A) RT-qPCR analysis of gene expression in the livers of normal (n=10) and NASH (n=14) patients. Values represent means \pm SEM. * P < 0.05, ** P < 0.01, *** P < 0.001. (B) Several genes positively correlate with miR-223 in NASH patients. P value is indicated.