

Supplementary information

Figure S1

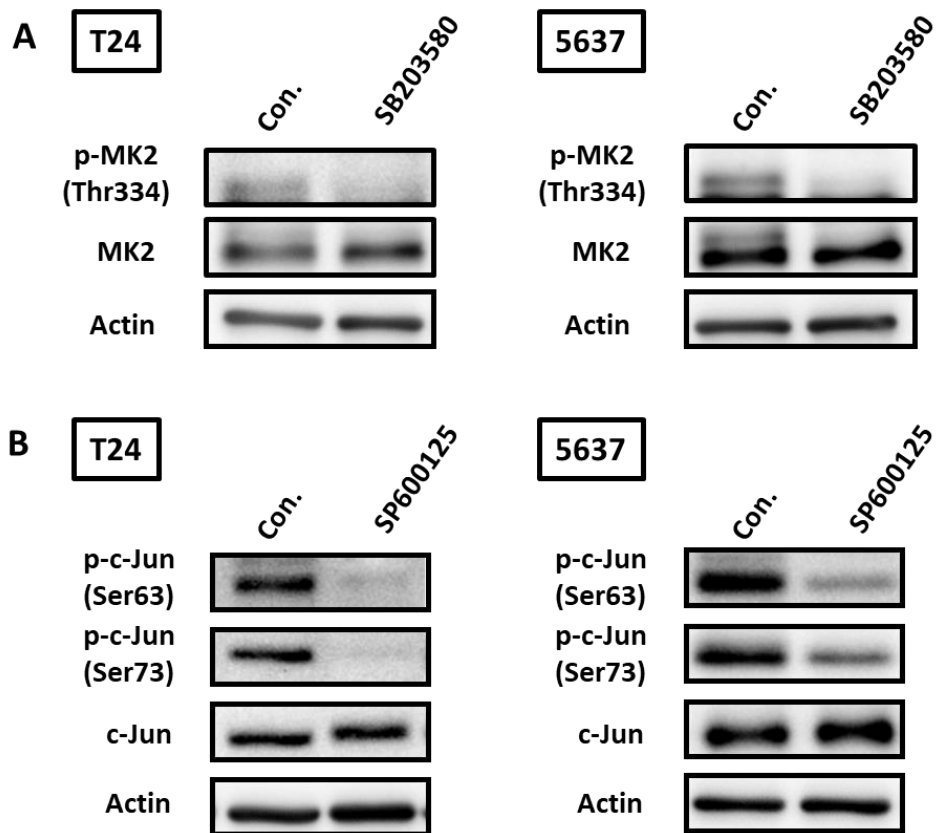


Figure S1. The efficacy tests of p38 and JNK inhibitors. (A and B) The BC-derived cell lines were incubated with SB203580 (10 μ M) or SP600125 (10 μ M) for 24 h. The cell lysates were collected and phosphorylation of MK2 and c-Jun were conducted by Western blot respectively.