

Supplementary Materials: A Novel Magnetic Molecular Imprinted Polymer for Selective Extraction of Zearalenone from Cereal Flours before Liquid Chromatography-Tandem Mass Spectrometry Determination

Chiara Cavaliere, Michela Antonelli, Andrea Cerrato, Giorgia La Barbera, Aldo Laganà, Michele Laus, Susy Piovesana and Anna Laura Capriotti

Table 1. Acquisition parameters for tandem mass spectrometry analysis.

Compound	Acronym	Retention Time (min)	Polarity	Precursor Ion (m/z)	Product Ions, m/z (Collision Energy, V)	S-LENS (V)
Deoxynivalenol	DON	4.2	-	341.0	265.0 (11)	65
					295.0 (11)	
					153.1 (32)	
Quercetin	QUE	5.9	+	303.0	137.1 (32)	150
					165.0 (26)	
Daidzein	DAD	8.5	+	255.0	137.1 (27)	170
					199.1 (24)	
Genistein	GEN	9.2	+	271.0	91.3 (36)	120
					153.1 (27)	
H-T2-Toxin	H-T2	9.3	+	442.2	215.1 (12)	95
					263.1 (12)	
					131.1 (33) Q ¹	
Zearalenone	ZEN	10.2	-	317.1	160.0 (34)	135
					175.1 (25) q ¹	
β-Zearalenol	β-ZEL	10.4	-	319.2	160.0 (28)	135
					275.1 (21)	
α-Zearalenol	α-ZEL	10.7	-	319.2	160.0 (32)	135
					275.1 (21)	
Zearalanone	ZAN	10.9	-	319.2	61.0 (30)	135
					205.0 (20)	
Deuterated Zearalenone	ZEN-d6 (IS)	10.2	-	323.0	131.1 (33)	140
					175.1 (25)	

¹Q: quantifier MRM transition; q: qualifier MRM transition.

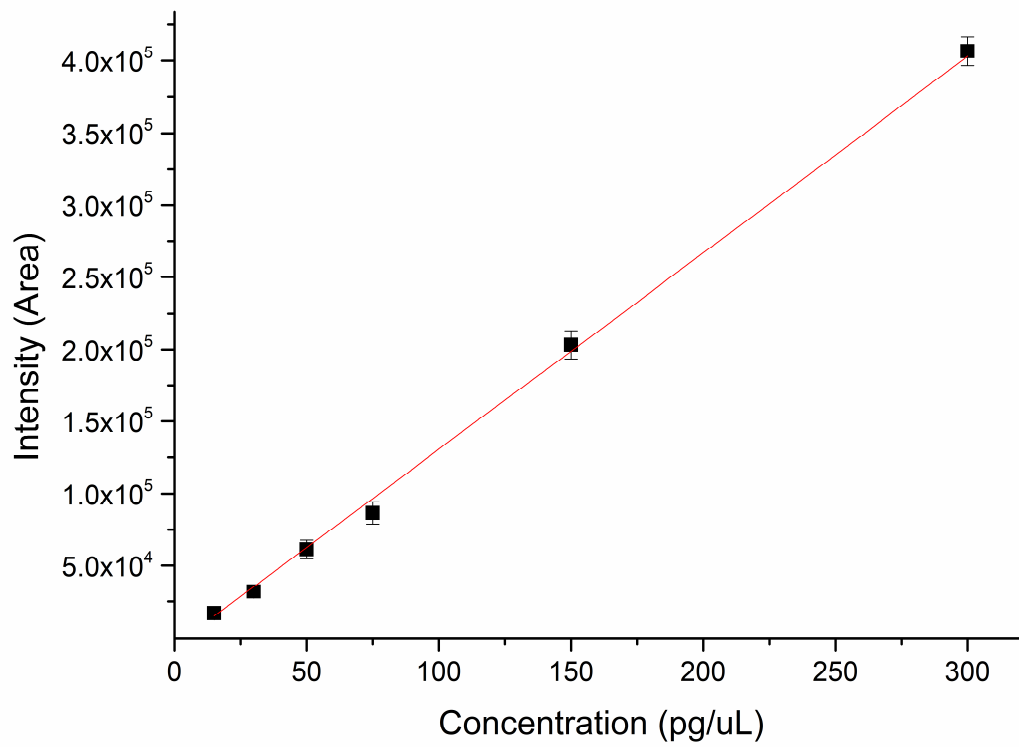


Figure 1. Six point-calibration curve constructed in neat standard.
The resulting equation is: $y = 1390.3 x - 8985.6$; $R^2 = 0.9948$.