

## Supplementary Online Content

Caskey R, Moran K, Touchette D, et al. Effect of comprehensive care coordination on Medicaid expenditures compared with usual care among children and youth with chronic disease: a randomized clinical trial. *JAMA Netw Open*. 2019;2(10):e1912604.  
doi:10.1001/jamanetworkopen.2019.12604

**eTable 1.** Codes Used to Identify Specific Chronic Diseases for CHECK Eligibility

**eTable 2.** Demographic Information of Outliers

**eTable 3.** Mean Expenditures, Before and After Intervention, of Outliers

**eFigure.** Mean Expenditures, Before and After Intervention, by 6-Month Increments, Showing Parallel Trends

This supplementary material has been provided by the authors to give readers additional information about their work.

**eTable 1. Codes Used to Identify Specific Chronic Diseases for CHECK Eligibility**

<b>Diagnosis</b>	<b>ICD-9 code</b>	<b>ICD-10 code</b>
<b>Asthma</b>	493.xx	J44.x, J45.xxx
<b>Diabetes</b>	250.xx	E10.xxxx, E11.xxxx, E13.xxxx
<b>Epilepsy</b>	345.xx	G40.xxx
<b>Prematurity</b>	765.00, 765.01, 765.02, 765.03, 765.04, 765.05, 765.06, 765.10, 765.11, 765.12, 765.13, 765.14, 765.15, 765.16, 765.20, 765.21, 765.22, 765.23, 765.24, 765.25, 765.26  768.5x, 768.6x, 768.7x, 768.9x	P07.0x, P07.1x, P07.2x, P07.30, P07.31, P07.32, P07.33, P07.34, P07.35  P84, P91.6x
<b>Sickle cell disease</b>  <i>*Required at least a 3:1 ratio of the number of claims with ICD code for sickle cell disease vs. sickle cell disease trait</i>	282.41, 282.42, 282.6x, 289.52, 517.3x  <u>Sickle cell disease trait:</u> 282.5x	D57.0x, D57.1, D57.2xx, D57.4xx, D57.8xx  <u>Sickle cell disease trait:</u> D57.3

**eTable 2. Demographic Information of Outliers**

	Enrolled (n = 5)		Usual Care (n = 9)	
	n (%)		n (%)	
<b>Age at enrollment, years</b>				
Mean (SD)	7.2	(10.7)	6.1	(9.5)
Median (IQR)	0.0	(12.0)	0.0	(13.0)
Adults (≥18)	1	(20.0)	2	(22.2)
Adolescents (13-17)	0	(0.0)	1	(11.1)
Children (6-12)	1	(20.0)	0	(0.0)
Young Children (1-5)	0	(0.0)	0	(0.0)
Infants (<1) <sup>a</sup>	3	(60.0)	6	(66.7)
<b>Gender</b>				
Male	3	(60.0)	5	(55.6)
Female	2	(40.0)	4	(44.4)
<b>CHECK diagnoses</b>				
Asthma	3	(60.0)	5	(55.6)
Diabetes	0	(0.0)	0	(0.0)
Prematurity	3	(60.0)	6	(66.7)
Seizure disorder	2	(40.0)	1	(11.1)
Sickle cell disease	0	(0.0)	0	(0.0)
<i>No CHECK diagnosis</i>	0	(0.0)	0	(0.0)
<b>Baseline risk tier</b>				
Low	0	(0.0)	2	(22.2)
Medium	3	(60.0)	4	(44.4)
High	2	(40.0)	3	(33.3)
<b>CDPS risk score</b>				
Mean (SD)	3.0	(2.1)	3.2	(2.2)
Median (IQR)	2.9	(2.0)	2.8	(3.0)

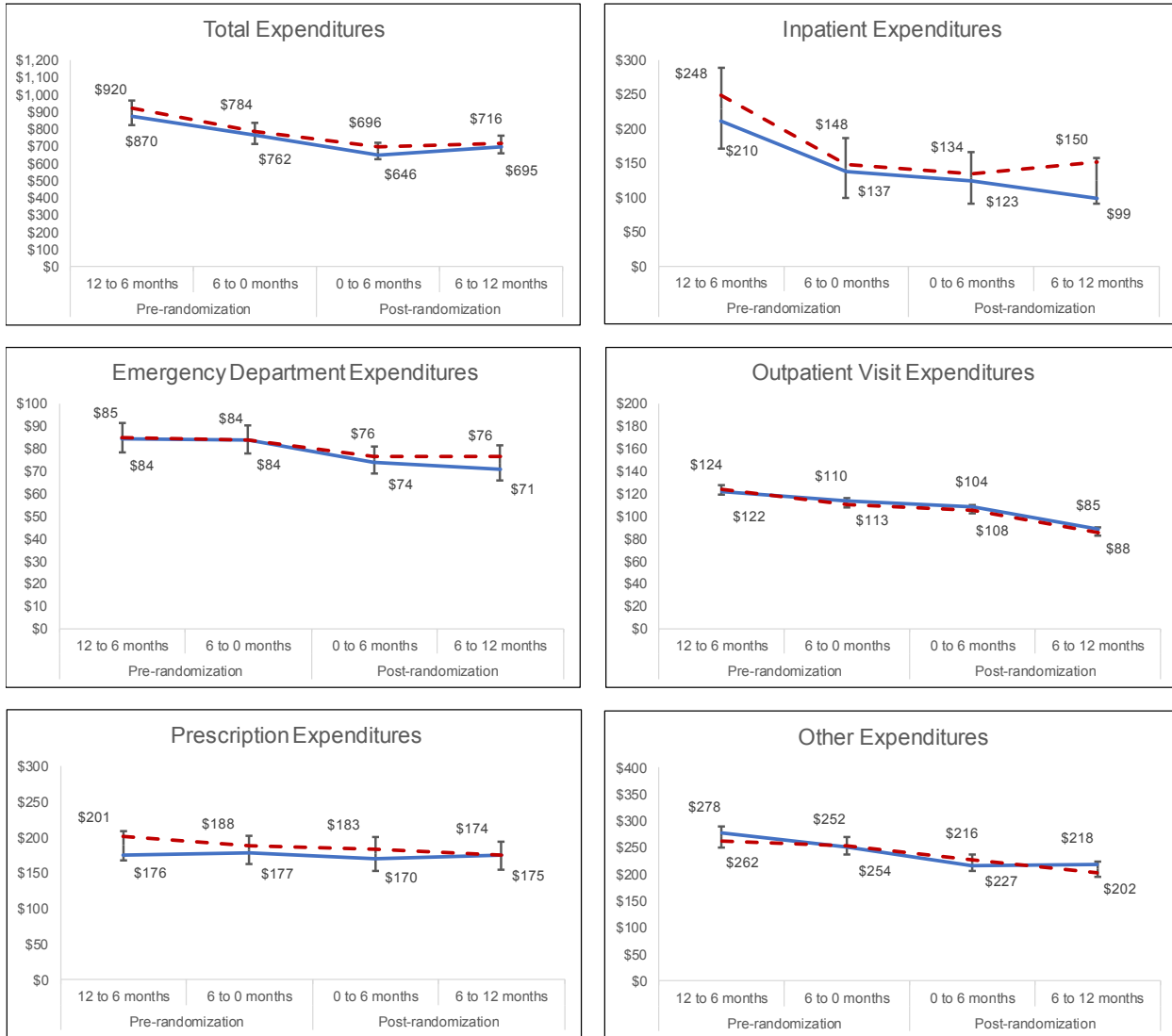
SD standard deviation; IQR interquartile range; CDPS Chronic Illness and Disability Payment System

<sup>a</sup> Excluded from program cohort due to lack of 12-month baseline period

**eTable 3. Mean Expenditures, Before and After Intervention, of Outliers**

	Enrolled (n = 5)		Usual Care (n = 9)	
	mean (SD)		mean (SD)	
<b>Mean Expenditures</b>				
12-month pre	\$150,119	(\$93,588)	\$238,767	(\$238,083)
12-month post	\$23,811	(\$50,303)	\$46,988	(\$64,767)
<b>Inpatient Cost, \$</b>				
12-month pre	\$144,539	(\$96,580)	\$211,677	(\$235,655)
12-month post	\$12,993	(\$29,053)	\$30,179	(\$59,388)
<b>ED Cost, \$</b>				
12-month pre	\$342	(\$587)	\$423	(\$752)
12-month post	\$955	(\$1,647)	\$384	(\$655)
<b>Outpatient Cost, \$</b>				
12-month pre	\$622	(\$462)	\$508	(\$520)
12-month post	\$506	(\$528)	\$442	(\$727)
<b>RX Cost, \$</b>				
12-month pre	\$2,861	(\$4,202)	\$6,225	(\$4,913)
12-month post	\$2,966	(\$6,600)	\$2,277	(\$3,932)
<b>Other Cost, \$</b>				
12-month pre	\$1,756	(\$1,447)	\$19,933	(\$37,857)
12-month post	\$6,391	(\$12,559)	\$13,705	(\$28,537)

**eFigure. Mean Expenditures, Before and After Intervention, by 6-Month Increments, Showing Parallel Trends**



— CHECK  
- - - Usual care  
 95% confidence interval