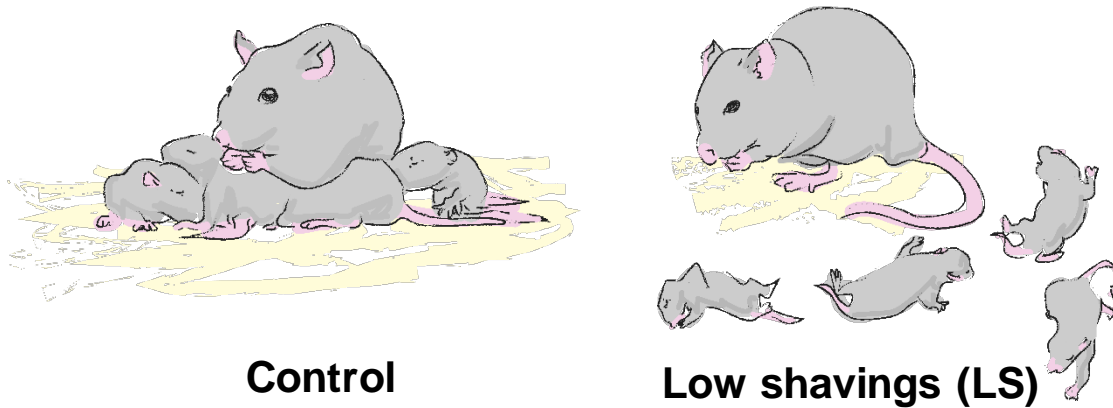


Opendak, et al.

Supplementary Fig. 1



<u>Percent of Observations in Which Behaviors Occurred</u>		
	<b>LS</b>	<b>Control</b>
<i>Abnormal behaviors</i>		
Rough handling	31.25%	0%
Stepping on pups	68.75%	0%
Pup vocalizations	56.25%	6.25%
Scattered nest	43.75%	6.25%
<i>Normal behaviors</i>		
Mother in nest	44.44%	79.49%
Nursing	65%	90%

**Figure S1. Frequency of behaviors during mother-pup interaction in Scarcity-Adversity model of abuse.** Reducing nest-building resources (“low shavings”, LS) is associated with rough handling of pups, decreased time in the nest and increased pup vocalizations, though pups gain weight normally.