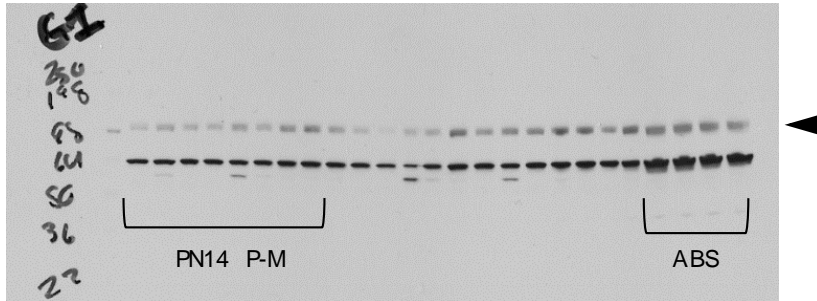


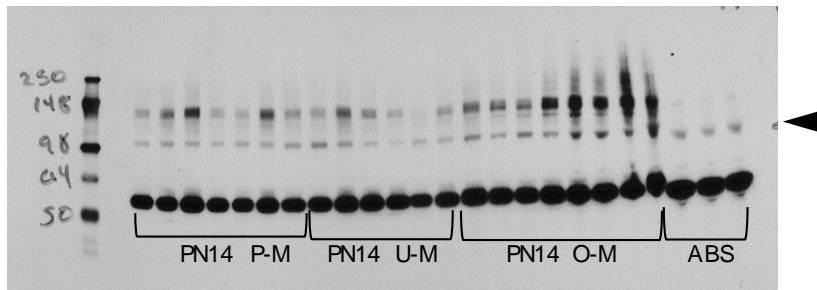
Opendak, et al.

Supplementary Figure 5.

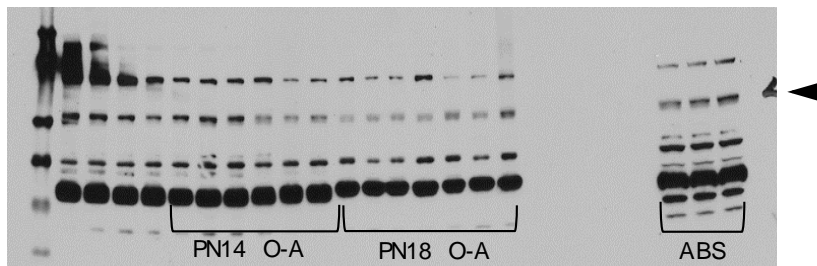
GluA2 Blots (100 kD)



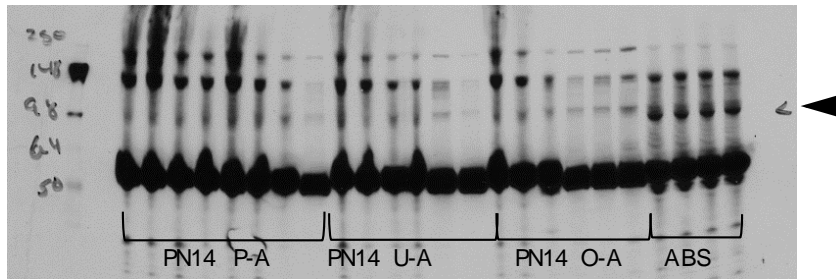
5A.  $\alpha$ -Tubulin comparison in Supp. Fig. 7F



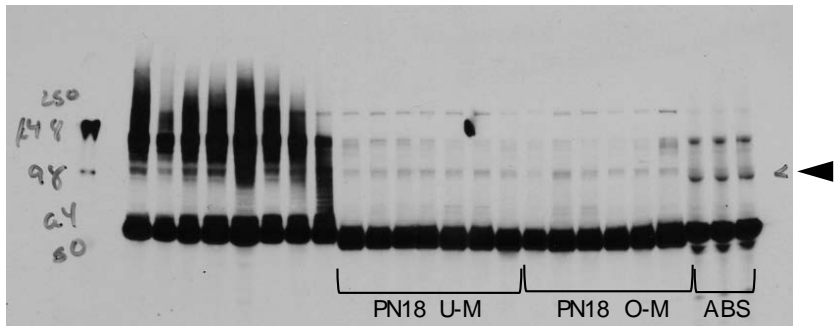
5B.  $\alpha$ -Tubulin comparison in Supp. Fig. 7A



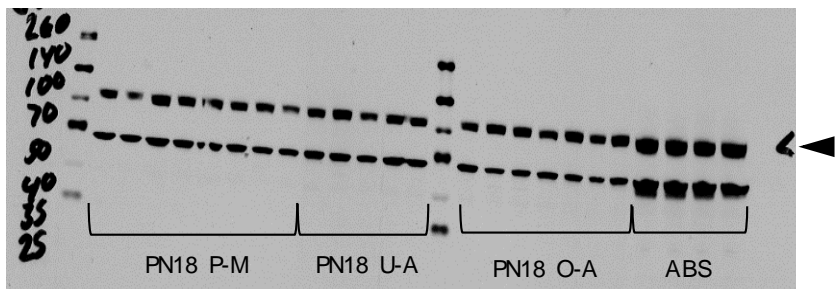
5C.  $\alpha$ -Tubulin comparison in Supp. Fig. 7I



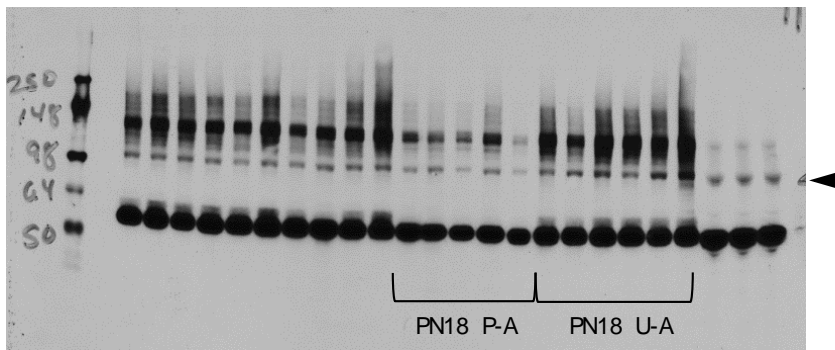
5D.  $\alpha$ -Tubulin comparison in Supp. Fig. 7B



5E.  $\alpha$ -Tubulin comparison in Supp. Fig 7C



5F.  $\alpha$ -Tubulin comparison in Supp. Fig 7G



5G.  $\alpha$ -Tubulin comparison in Supp. Fig. 7D

**Figure S5.** Western blot showing GluA2 (100 kDa, arrow) levels in amygdalae of pups conditioned at age postnatal day PN14 and PN18. P-A/U-A/O-A/P-M/U-M/O-M: Paired, Unpaired, Odor only conditioning, alone (A) or with mother (M). ABS: All brain sample, positive control. Empty lanes were loaded with 1x Laemmli Buffer. The same tubulin-corrected values were used for all markers probed. Comparisons were made across gels processed in parallel using samples derived from the same experiment. Unmarked blots were analyzed as part of a different study.