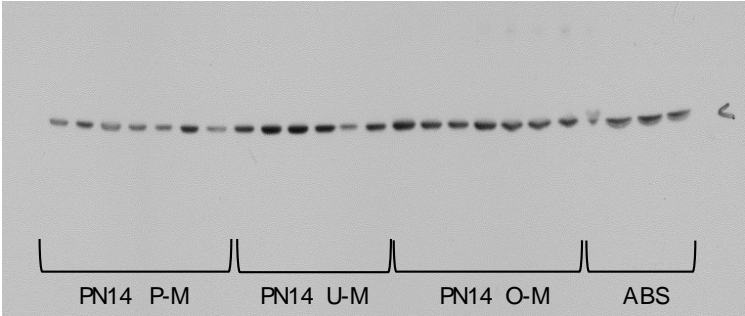
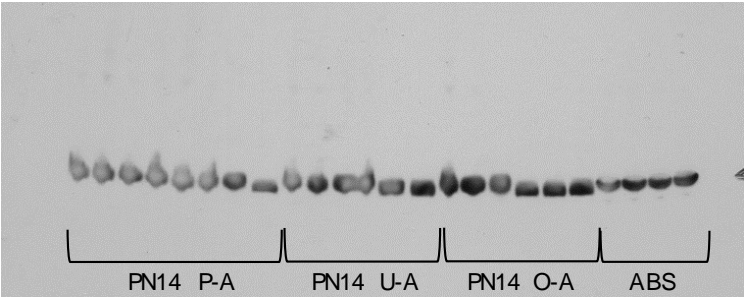


**Opendak et al.**  
**Supplementary Figure 7**

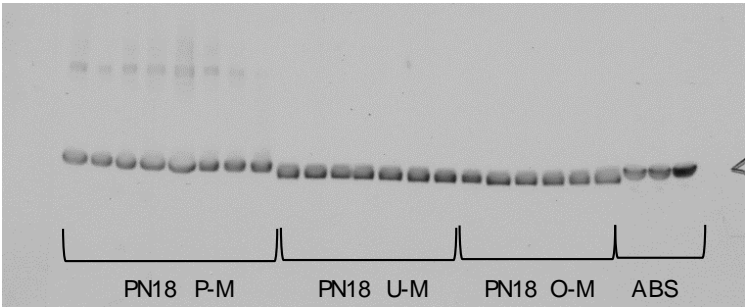
$\alpha$ -Tubulin Blots (50 kDa)



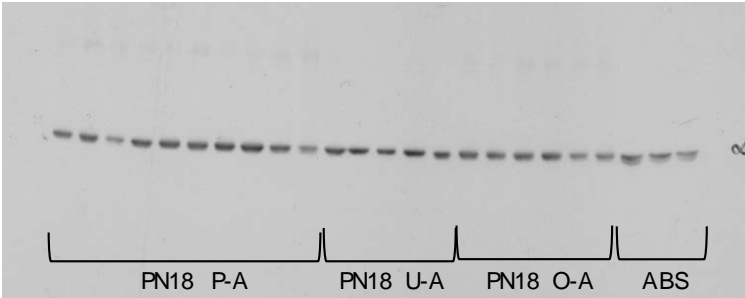
7A.



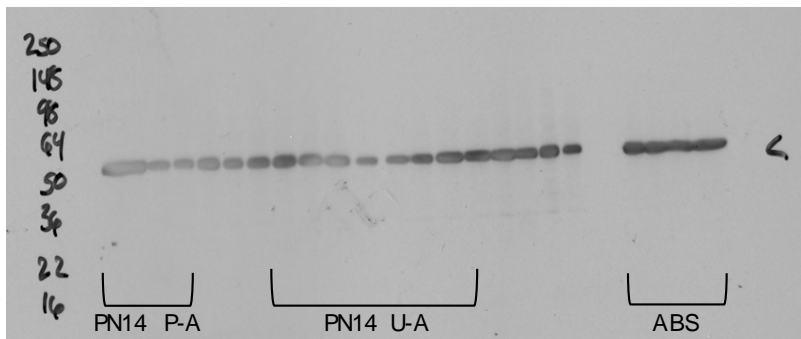
7B.



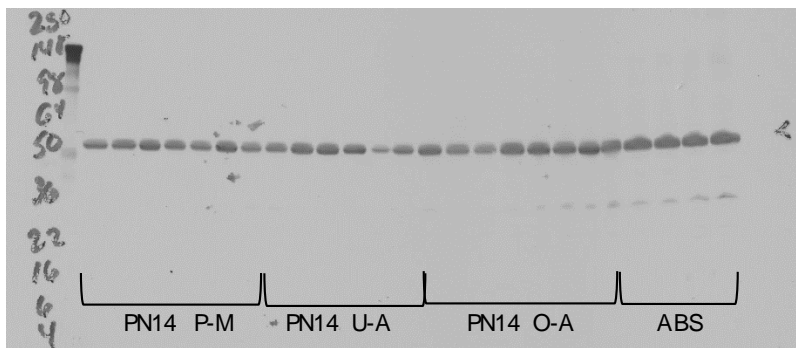
7C.



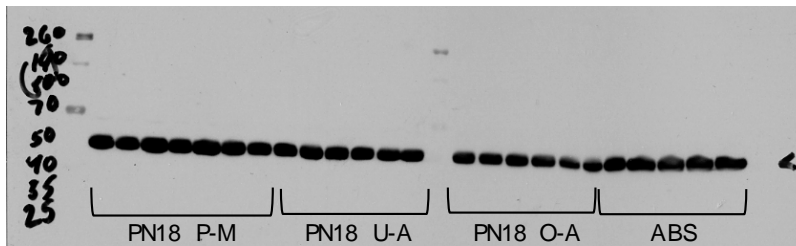
7D.



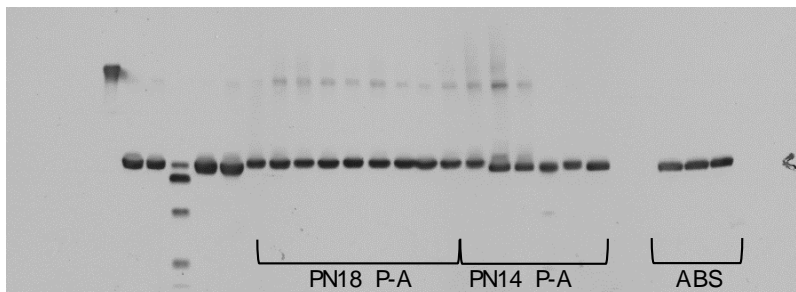
7E.



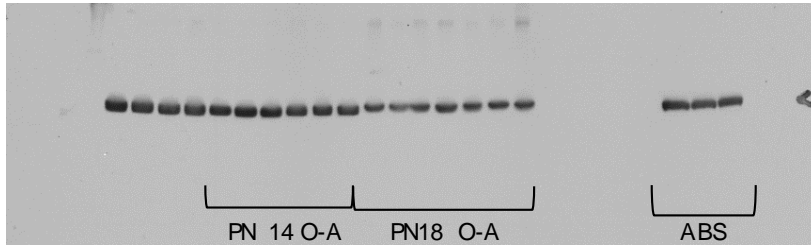
7F.



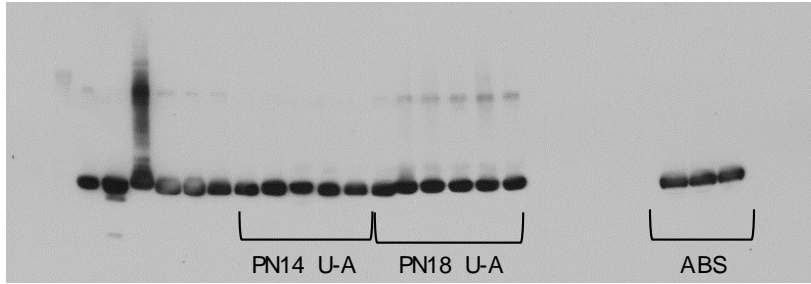
7G.



7H.



7I.



7J.

**Figure S7.** Western blot showing  $\alpha$ -Tubulin (100 kDa, arrow) levels in amygdalae of pups conditioned at age postnatal day PN14 and PN18. P-A/U-A/O-A/P-M/U-M/O-M: Paired, Unpaired, Odor only conditioning, alone (A) or with mother (M). ABS: All brain sample, positive control. Empty lanes were loaded with 1x Laemmli Buffer. The same tubulin-corrected values were used for all markers probed. Comparisons were made across gels processed in parallel using samples derived from the same experiment. Unmarked blots were analyzed as part of a different study.