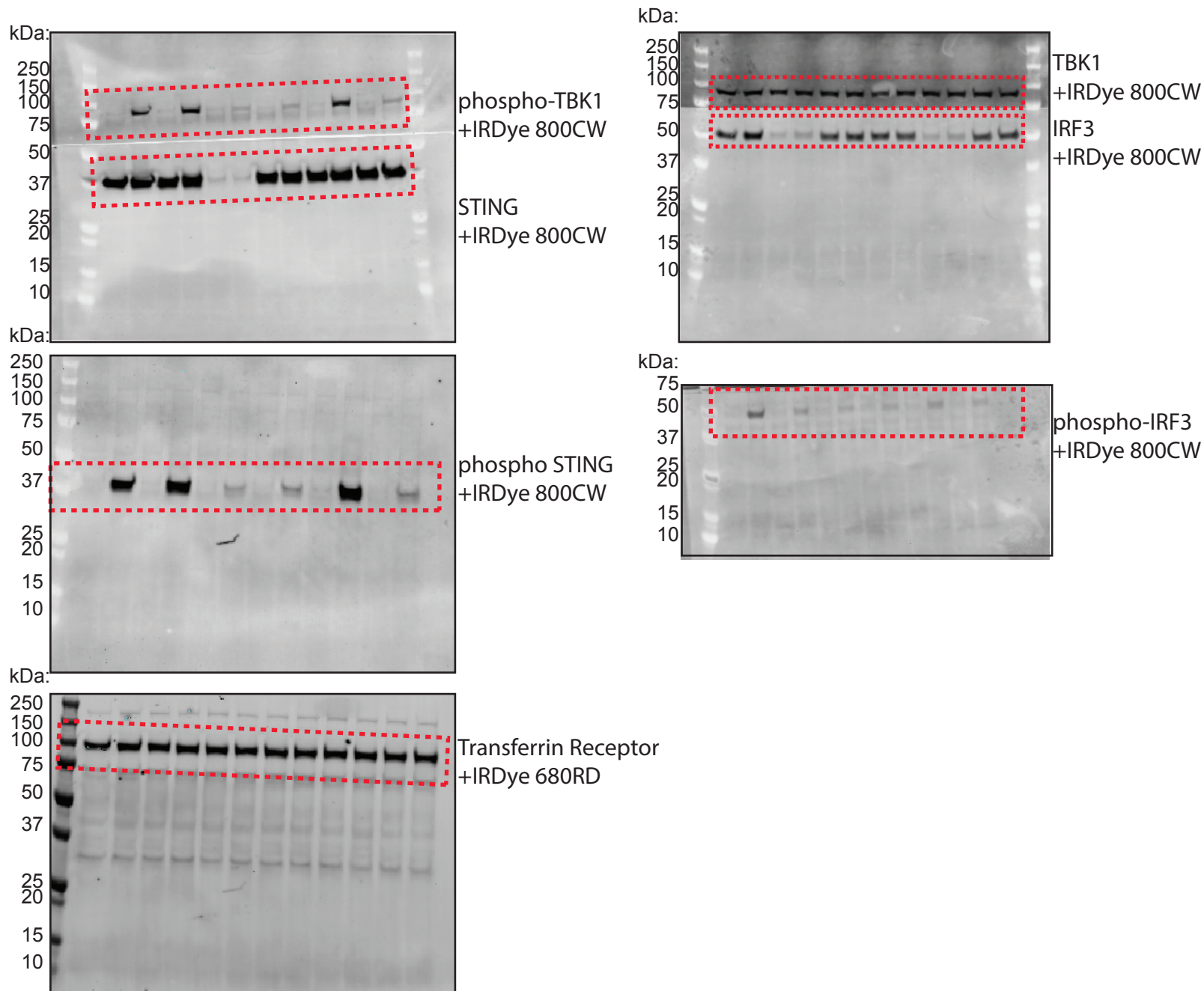


Supplementary Figure
Original source images for data obtained by electrophoretic separation
Figure 3a



Western blot of membrane probed with up to 2 primary and secondary antibodies, visualized in two fluorescent channels

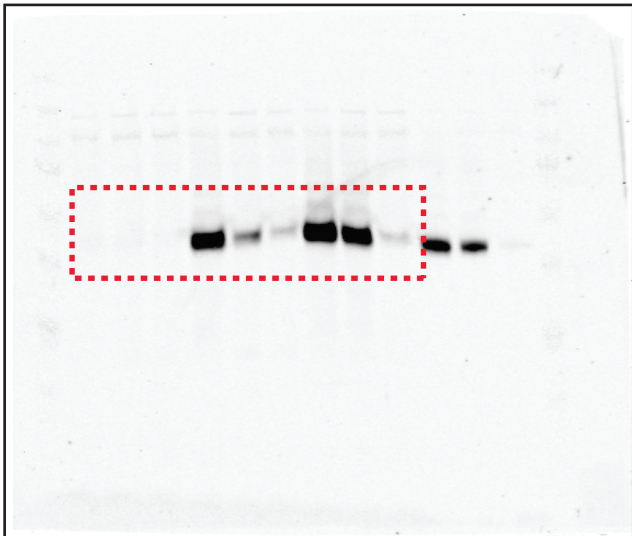
Primary antibodies: 1:1000 Rabbit anti-phospho-TBK1 (Cell Signalling technologies Cat.# 5483), 1:1000; Rabbit anti-Phospho STING (Cell Signalling Technologies Cat.# 19781S), 1:2000 Rabbit anti-STING (Cell Signalling Technologies Cat.# 13647); 1:1000 Rabbit anti-TBK1 (Cell Signalling Technologies Cat.# 3504); 1:1000 Mouse anti-Transferrin Receptor (Thermo Fischer Scientific Cat.# 13-6800); 1:2000 Rabbit-anti IRF3 (Abcam Cat.# EP2419Y); 1:1000 Rabbit anti-phospho-TBK1 (Cell Signalling Technologies Cat.# 4947)

Secondary antibodies: 1:5000 IRDye 800CW Donkey anti-Rabbit IgG (LI-COR Biosciences Cat.# 926-32213); 1:5000 IRDye 680RD Donkey anti-Rabbit IgG (LI-COR Biosciences Cat.# 926-68073) and IRDye 680RD Goat anti-Mouse IgG (LI-COR Biosciences Cat.# 926-68070).

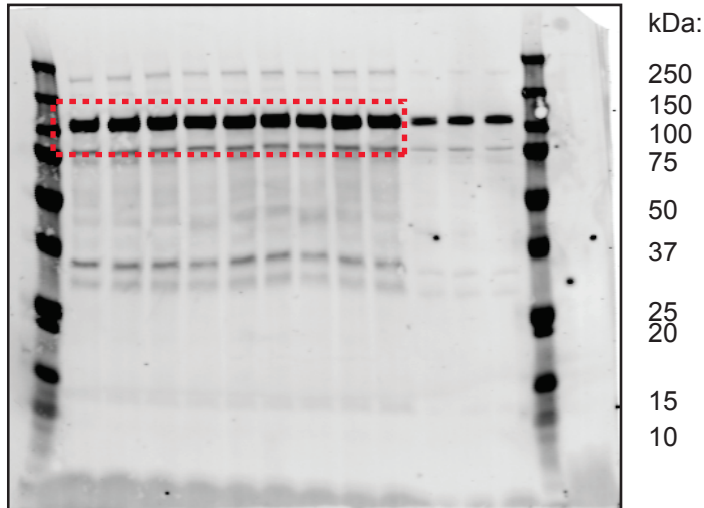
Ladder: Odyssey one-color protein molecular weight ladder (LI-C)OR Biosciences Cat.# 928-40000)

Supplementary Figure
Original source images for data obtained by electrophoretic separation
Figure 3c

phospho STING
+IRDye 800CW

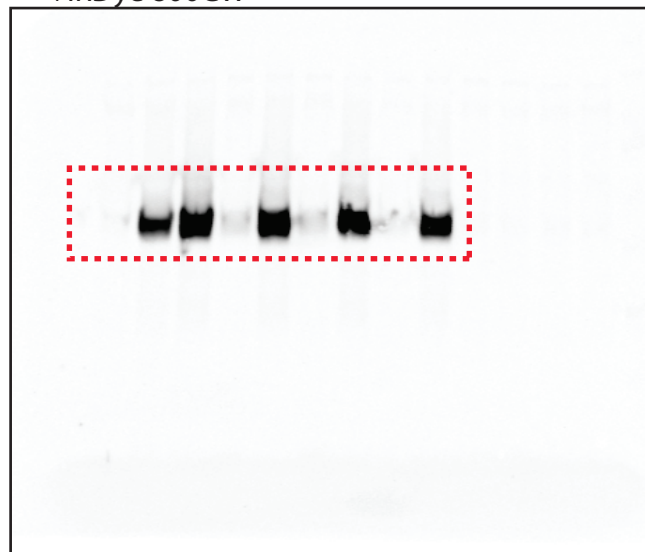


Transferrin Receptor
+IRDye 680RD

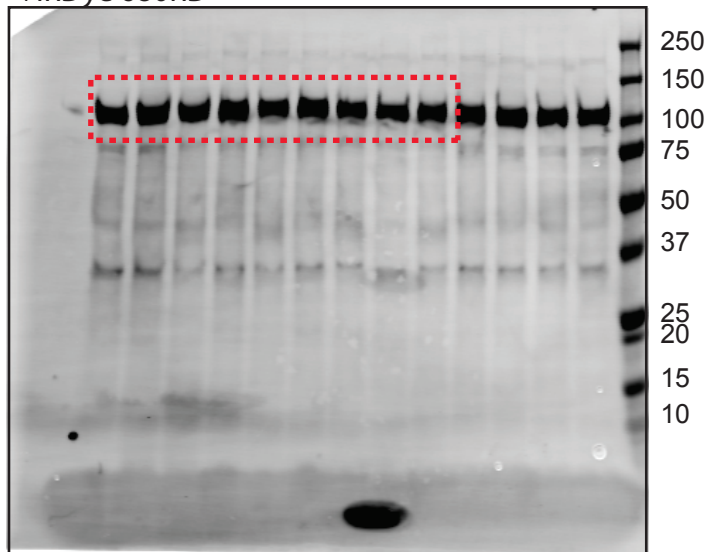


Supplementary Figure
Original source images for data obtained by electrophoretic separation
Figure 3d

phospho STING
+IRDye 800CW

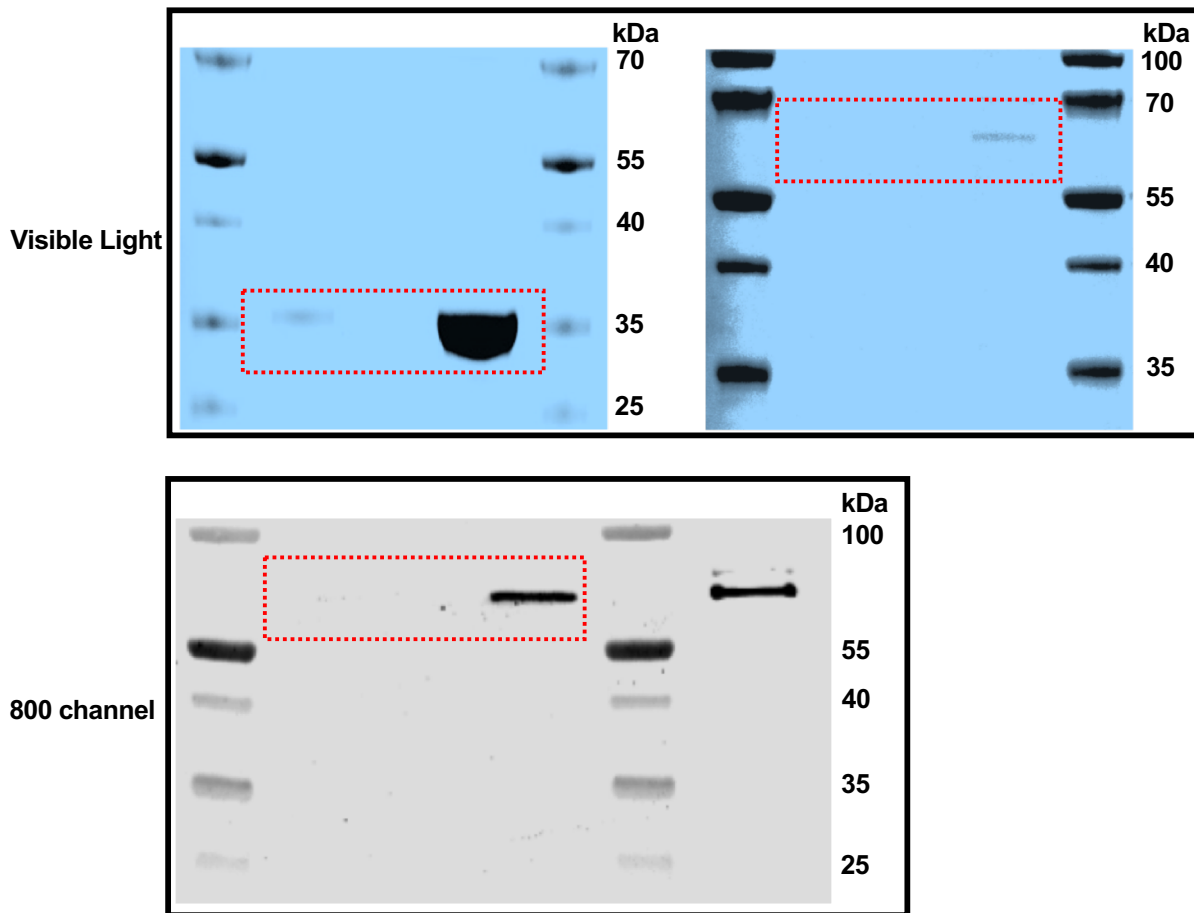


Transferrin Receptor
+IRDye 680RD



Western blot of one membrane probed with 2 primary and secondary antibodies, visualized in two fluorescent channels
Primary antibodies: 1:1000 Rabbit anti-Phospho STING (Cell Signalling Technologies Cat. #: 19781S) 1:1000 Mouse anti-Transferrin Receptor (Thermo Fischer Scientific Cat.# 13-6800).
Secondary antibodies: 1:5000 IRDye 800CW Donkey anti-Rabbit IgG (LI-COR Biosciences Cat.# 926-32213) and IRDye 680RD Goat anti-Mouse IgG (LI-COR Biosciences Cat# 926-68070).
Ladder: Odyssey one-color protein molecular weight ladder (LI-C)OR Biosciences Cat.# 928-40000)

Supplementary Figure
Original source images for data obtained by electrophoretic separation
Figure 4g



Coomasie Stain of two gels stained with Coomassie stain, visualized under visible light

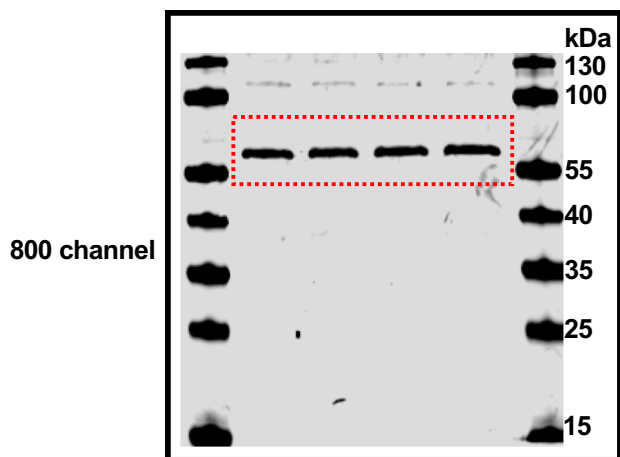
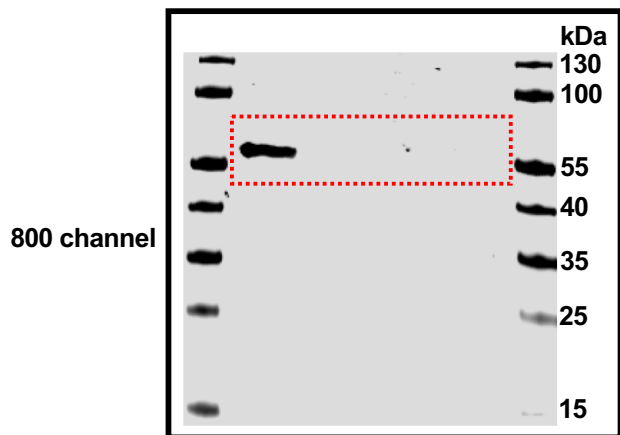
Western blot of one gel/membrane probed with 1 set of primary and secondary antibodies separately, visualized in one fluorescence channel

Primary antibodies 0.3 $\mu\text{g}/\text{mL}$ Rabbit anti-SLC19A1 (Boster Biological Technology Cat# PB9504)

Secondary antibodies 1:10,000 IRDye 800CW Goat anti-Rabbit IgG (LI-COR Biosciences Cat# 926-32211)

Ladder Thermo Scientific PageRuler Prestained Protein Ladder

Supplementary Figure
Original source images for data obtained by electrophoretic separation
Figure 4h



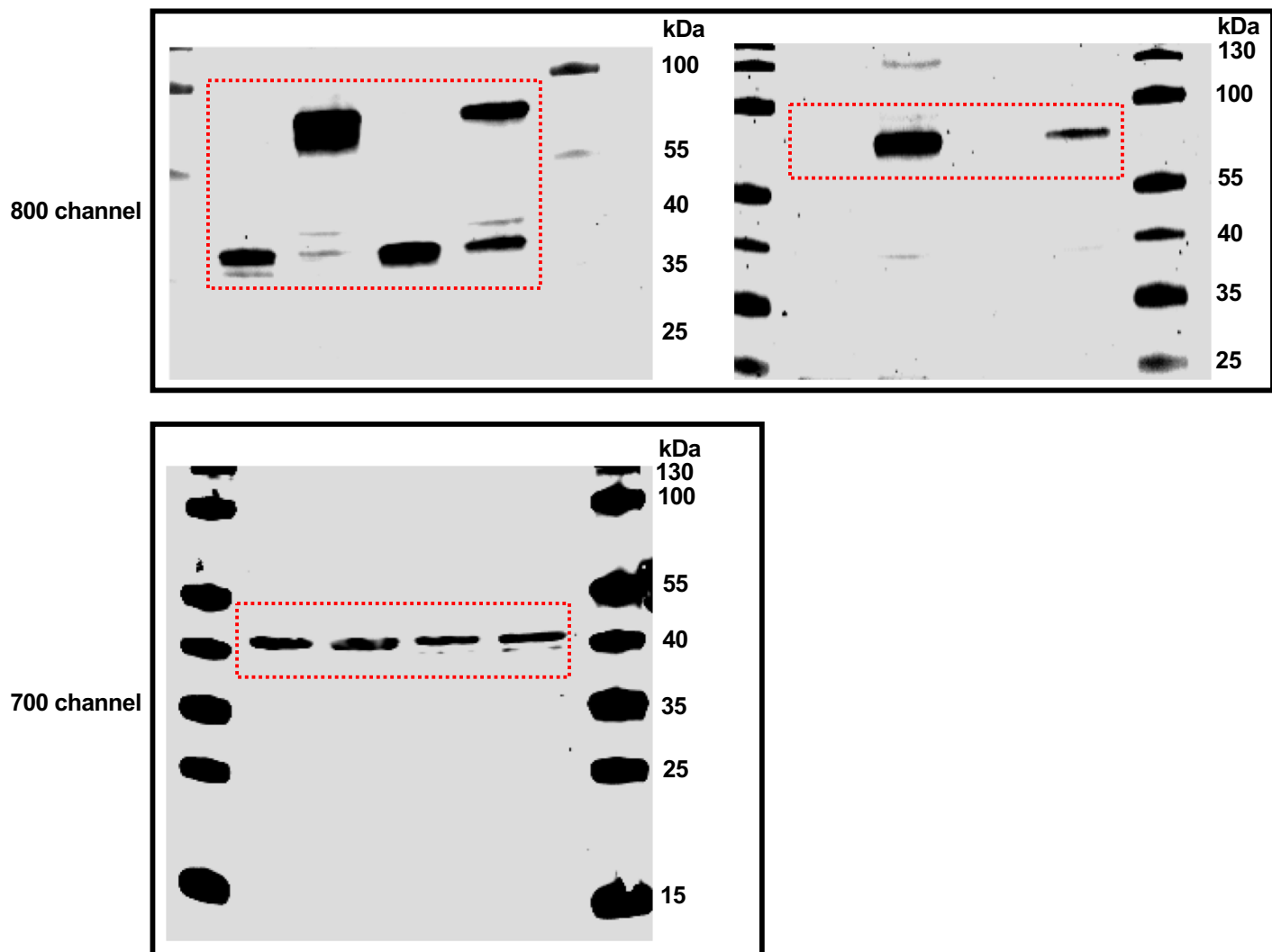
Western blot of two gel/membranes probed with 1 set of primary and secondary antibodies separately, visualized in one fluorescence channel

Primary antibodies 0.3 µg/mL Rabbit anti-SLC19A1 (Boster Biological Technology Cat# PB9504)

Secondary antibodies 1:10,000 IRDye 800CW Goat anti-Rabbit IgG (LI-COR Biosciences Cat# 926-32211)

Ladder Thermo Scientific PageRuler Prestained Protein Ladder

Supplementary Figure
Original source images for data obtained by electrophoretic separation
Extended Data Figure 5c



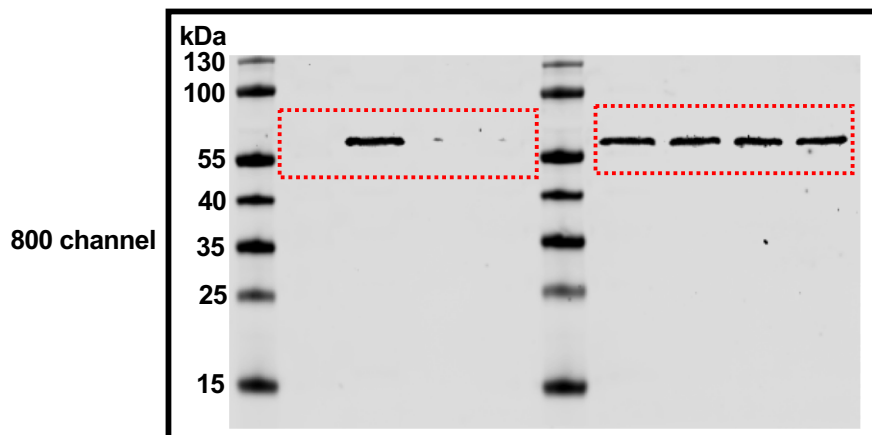
Western blot of one gel/membrane probed with 3 sets of primary and secondary antibodies separately, visualized in two fluorescence channels

Primary antibodies 1:1,000 Rabbit anti-STING (Cell Signaling Technology Cat# 13647S), 1:1,000 Rabbit anti-Phospho STING (Cell Signaling Technology Cat# 19781S), 1:1,000 Mouse anti-Beta Actin (Cell Signaling Technology Cat# 3700S),

Secondary antibodies 1:10,000 IRDye 800CW Goat anti-Rabbit IgG (LI-COR Biosciences Cat# 926-32211) and IRDye 680RD Goat anti-Mouse IgG (LI-COR Biosciences Cat# 926-68070).

Ladder Thermo Scientific PageRuler Prestained Protein Ladder

Supplementary Figure
Original source images for data obtained by electrophoretic separation
Extended Data Figure 8c



Western blot of one gel/membrane probed with 1 set of primary and secondary antibodies separately, visualized in one fluorescence channel

Primary antibodies 0.3 $\mu\text{g}/\text{mL}$ Rabbit anti-SLC19A1 (Boster Biological Technology Cat# PB9504)

Secondary antibodies 1:10,000 IRDye 800CW Goat anti-Rabbit IgG (LI-COR Biosciences Cat# 926-32211)

Ladder Thermo Scientific PageRuler Prestained Protein Ladder