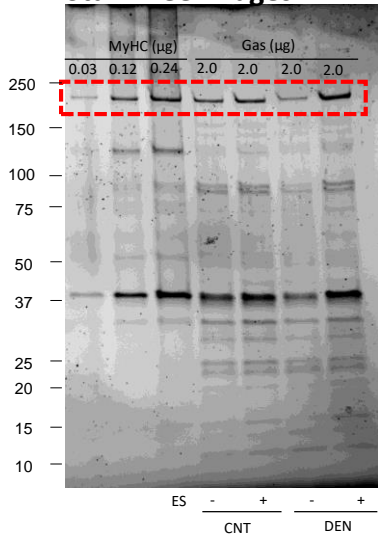


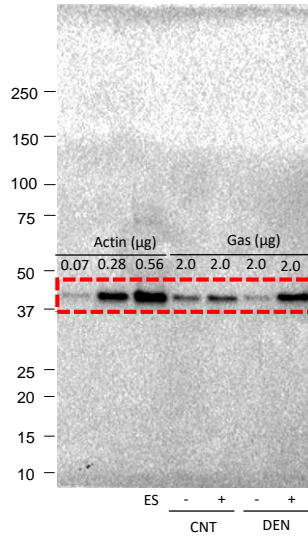
**Fig. 3A**

**Stain free images**



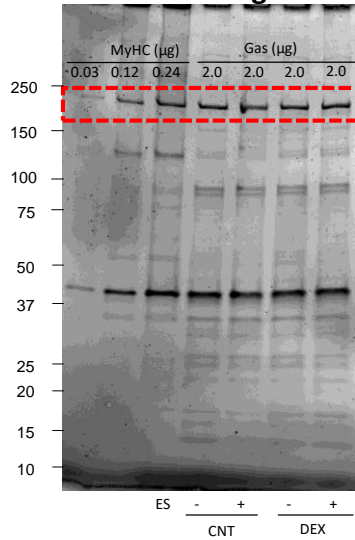
**Fig. 3D**

**IB: actin**



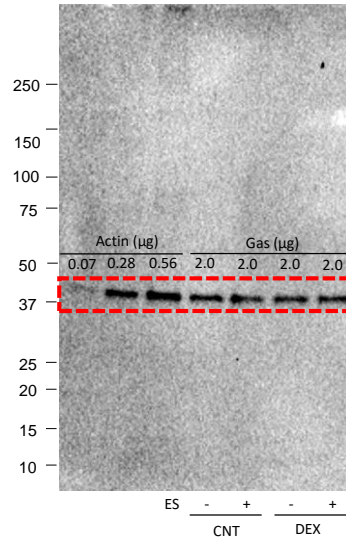
**Fig. 3B**

**Stain free images**

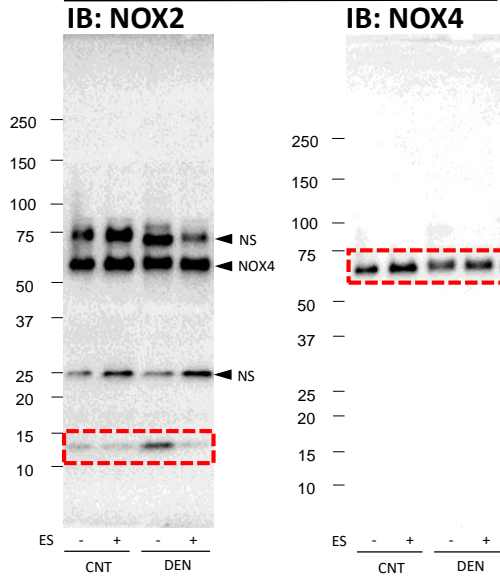
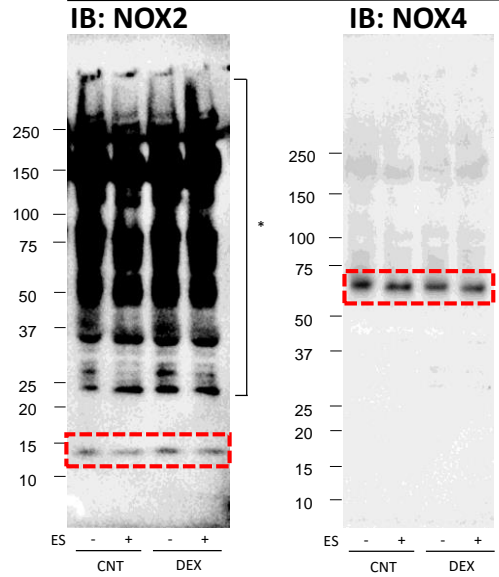
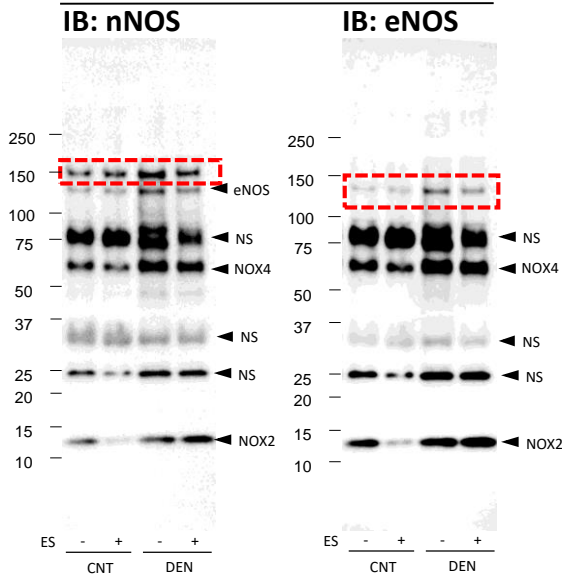
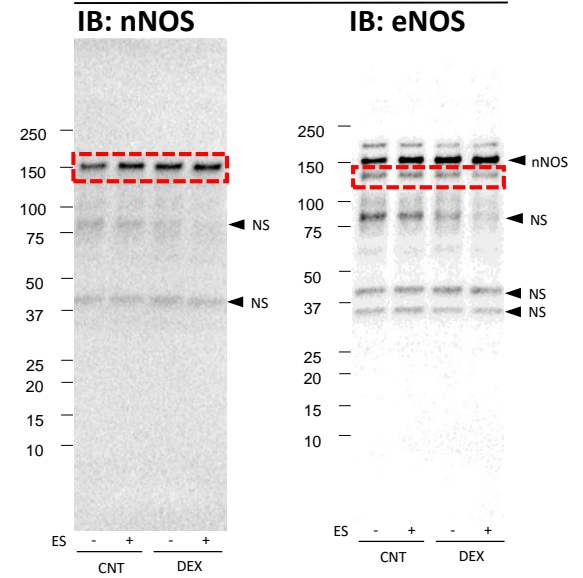


**Fig. 3E**

**IB: actin**



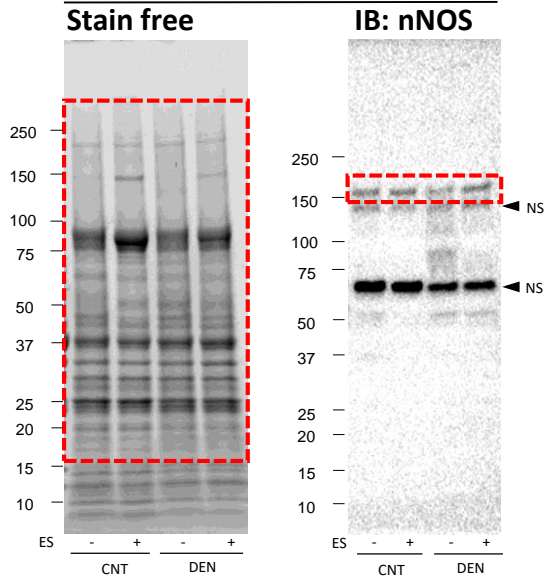
**S1\_raw\_images. Original uncropped blots used for Fig. 3.** Image was captured using a charge-coupled device camera attached to ChemiDOC MP (BioRad) and Image Lab Software was used for detection as well as densitometry. The part of the blot or gel shown in the manuscript is within the red box.

**Fig. 4A****Fig. 4B****Fig. 4E****Fig. 4F**

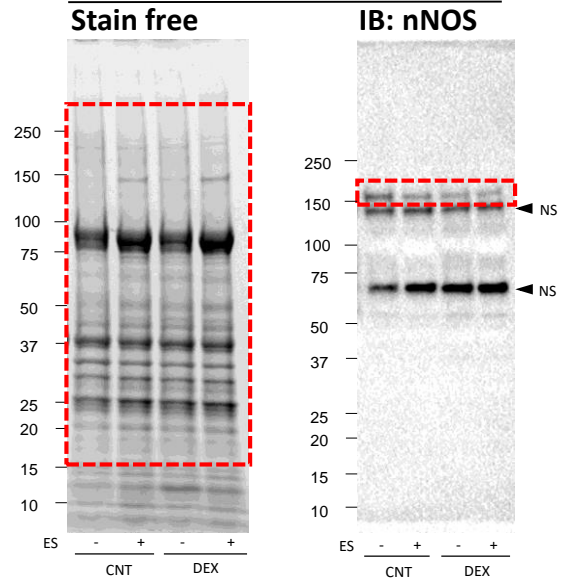
**S1\_raw\_images. Original uncropped blots used for Fig. 4.** Image was captured using a charge-coupled device camera attached to ChemiDOC MP (BioRad) and Image Lab Software was used for detection as well as densitometry. The part of the blot shown in the manuscript is within the red box.

NS: non-specific binding. \*Blots for p-p70S6K, p-rpS6, total AKT, and their NSs.

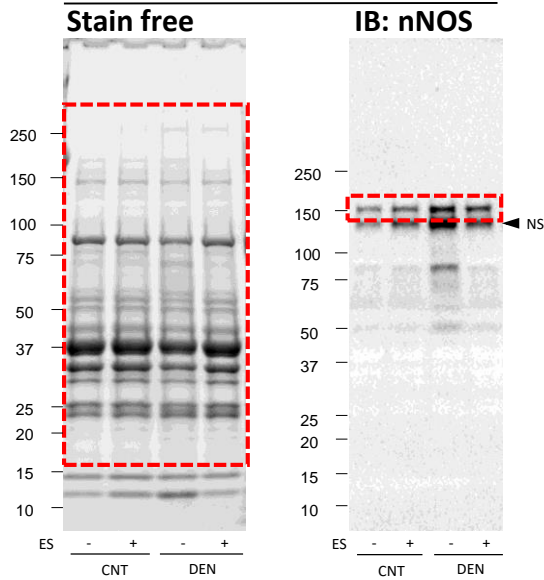
**Fig. 5A**



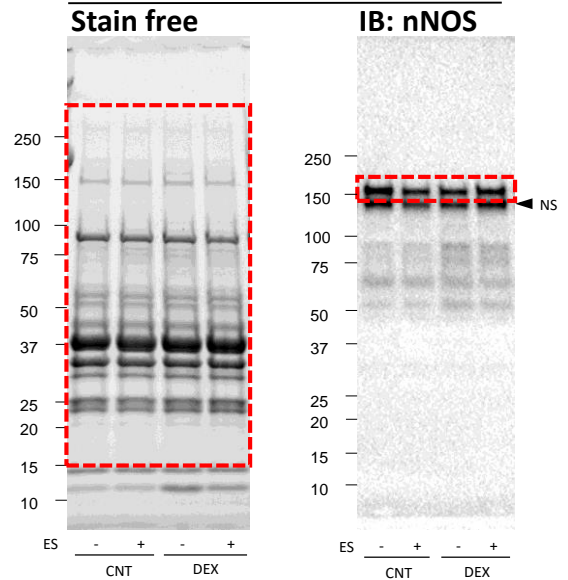
**Fig. 5B**



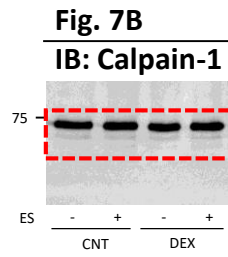
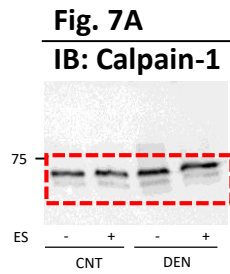
**Fig. 5D**



**Fig. 5E**



**S1\_raw\_images. Original uncropped blots used for Fig. 5.** Image was captured using a charge-coupled device camera attached to ChemiDOC MP (BioRad) and Image Lab Software was used for detection as well as densitometry. The part of the blot or gel shown in the manuscript is within the red box. NS: non-specific binding.



**S1\_raw\_images. Original uncropped blots used for Fig. 7.** Image was captured using a charge-coupled device camera attached to ChemiDOC MP (BioRad) and Image Lab Software was used for detection as well as densitometry. The part of the blot shown in the manuscript is within the red boxes