

# Display Report

## Analysis Info

Analysis Name arefk302.d  
 Sample Name arefk3  
 Comment arefk3

Acquisition Date 12/18/14 14:07:49  
 Method Copy of mnarefiv.MS

Operator  
 Instrument

Administrator Esquire-LC\_00066

MM

## Acquisition Parameter

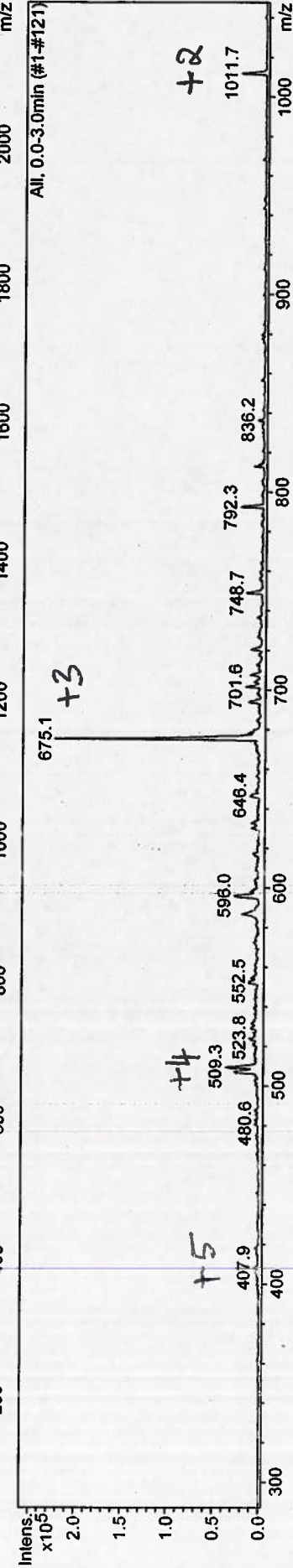
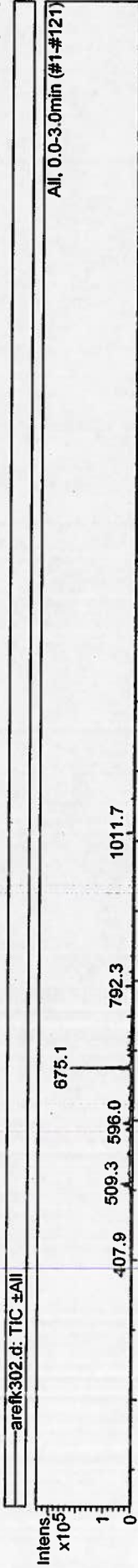
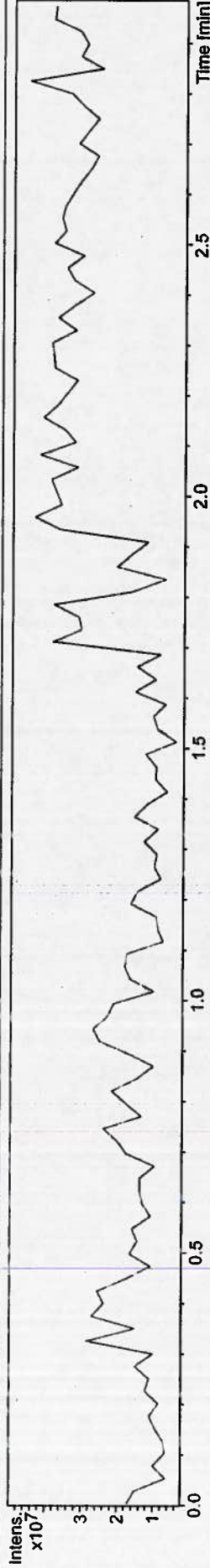
Ion Source Type ESI  
 Scan Begin 50.00 m/z  
 Capillary Exit 100.0 Volt

Mass Range Mode Std/Normal  
 Scan End 2200.00 m/z  
 Skim 1 30.0 Volt

Ion Polarity Averages  
 Trap Drive

Positive 4 Spectra  
 65.0

Alternating Ion Polarity n/a  
 Accumulation Time 1539  $\mu$ s  
 Auto MS/MS Off



# Display Report

**Analysis Info**

Analysis Name arefk302.d  
 Sample Name arefk3  
 Comment arefk3

Acquisition Date 12/18/14 14:07:49  
 Method Copy of mnarefiv.MS

Operator  
 Instrument

Administrator  
 Esquire-LC\_00066

*mn*

**Acquisition Parameter**

Ion Source Type ESI  
 Scan Begin 50.00 m/z  
 Capillary Exit 100.0 Volt

Mass Range Mode Std/Normal  
 Scan End 2200.00 m/z  
 Skim 1 30.0 Volt

Ion Polarity  
 Averages  
 Trap Drive

Positive  
 4 Spectra  
 65.0

Alternating Ion Polarity n/a  
 Accumulation Time 1539  $\mu$ s  
 Auto MS/MS Off

