

Supplementary Information for

Simulated microgravity with floating environment promotes migration of non-small cell lung cancers

Chi Bum Ahn ^{1,*}, Ji-Hyun Lee ^{1,*}, Dae Geun Han ², Hyun-Wook Kang ³, Sung-Ho Lee ⁴, Jae-Ik Lee ⁵, Kuk Hui Son ^{5,†}, Jin Woo Lee ^{1,2,†}

¹ Department of Molecular Medicine, College of Medicine, Gachon University, Incheon, Republic of Korea

² Department of Health Sciences and Technology, GAIHST, Gachon University, Incheon, Republic of Korea

³ Department of Biomedical Engineering, School of Life Sciences, Ulsan National Institute of Science and Technology, Ulsan, Republic of Korea

⁴ Department of Thoracic and Cardiovascular Surgery, Korea University Medical College, Korea University, Seoul, Republic of Korea

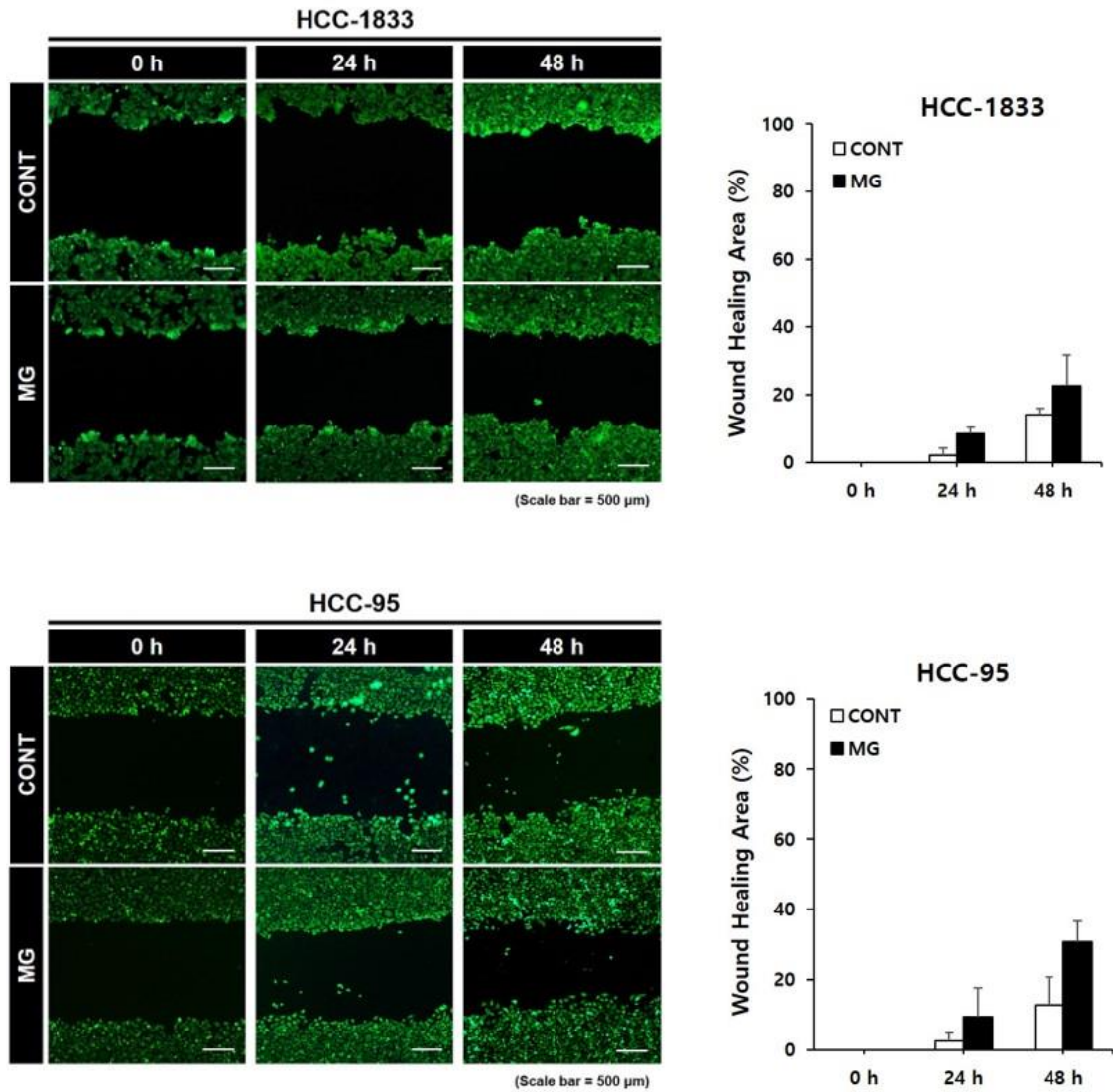
⁵ Department of Thoracic and Cardiovascular Surgery, Gachon University Gil Medical Center, School of Medicine, Gachon University, Incheon, Republic of Korea

* These authors contributed equally to this work.

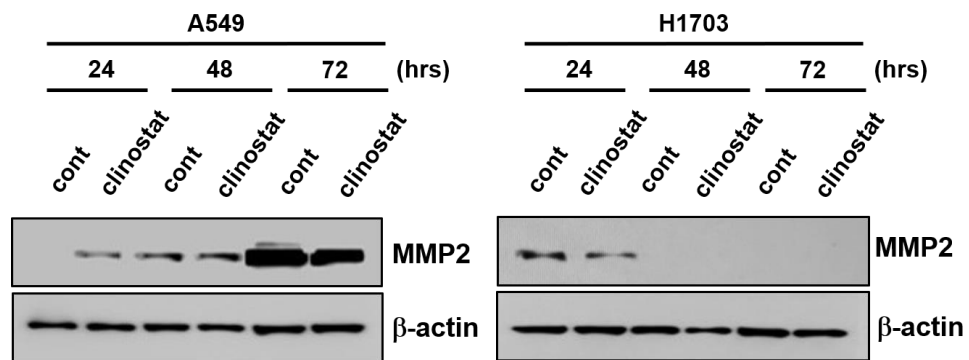
† Corresponding authors.

Please address all correspondence to Professor Kuk Hui Son and Jin Woo Lee.

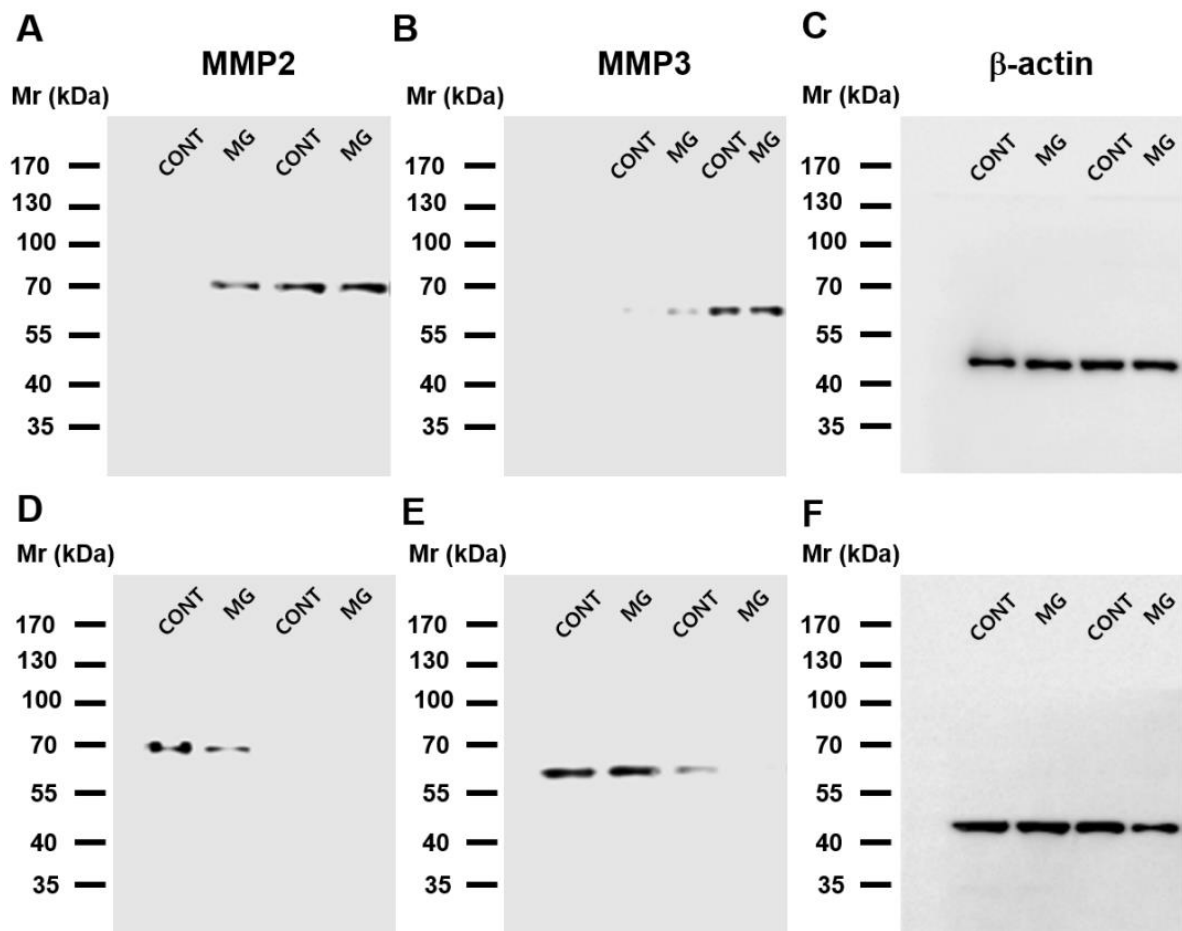
Supplementary figure



Supplementary figure 1. Wound healing analysis of HCC-1833 (adenocarcinoma) and HCC-95 (squamous cell carcinoma) at a low cell proliferation condition (1% FBS condition) on CONT and MG (** $p < 0.01$).



Supplementary figure 2. Long term comparison of MMP-2 protein expression between CONT and MG in A549/H1703 cells.



Supplementary figure 3. Original gel images by western blotting. MMP-2 (A), MMP-3 (B) and β -actin (C) protein expressions between CONT and MG in A549 cells. . MMP-2 (D), MMP-3 (E) and β -actin (F) protein expressions between CONT and MG in H1703 cells.