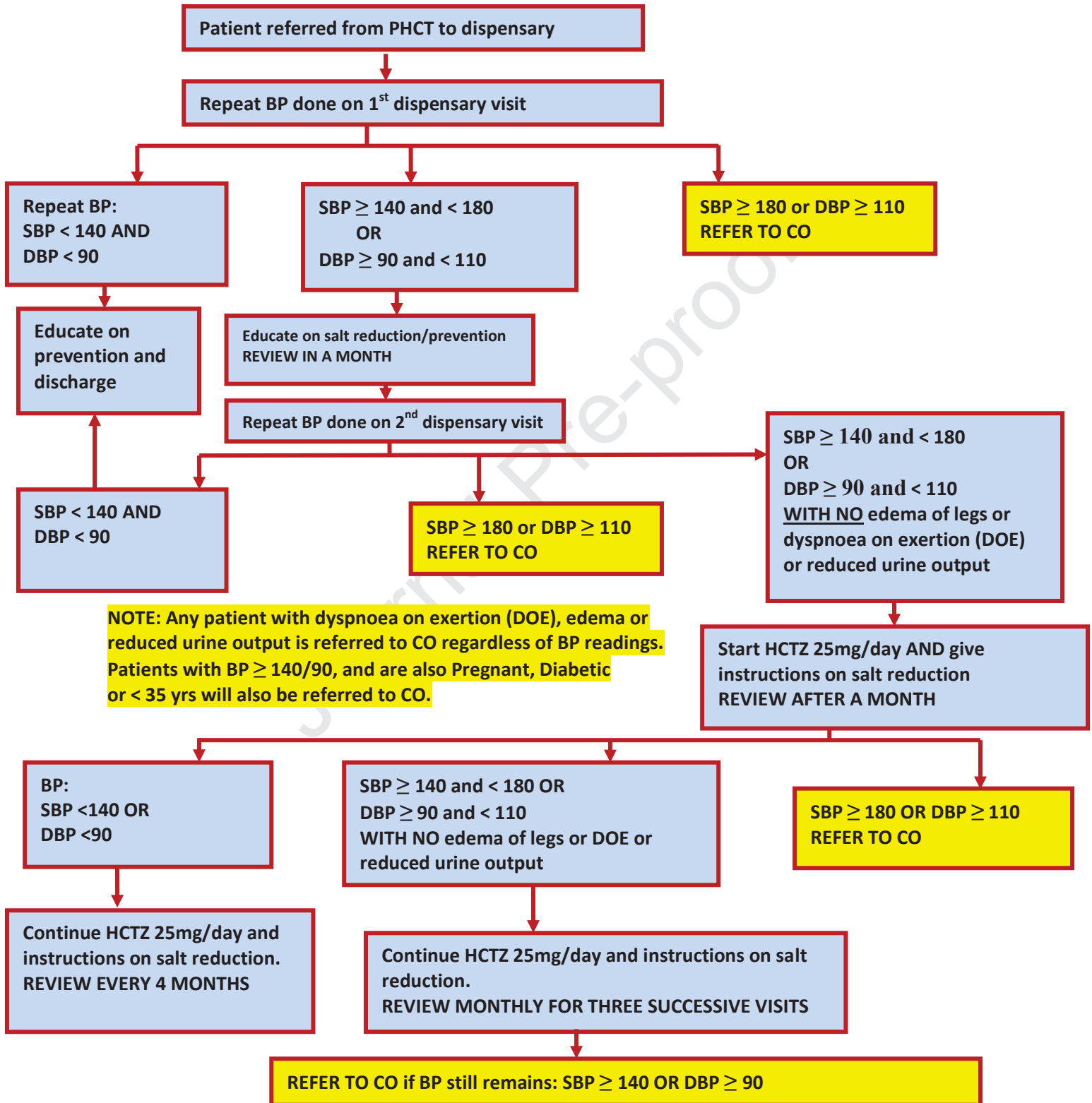


Hypertension screening and care algorithm

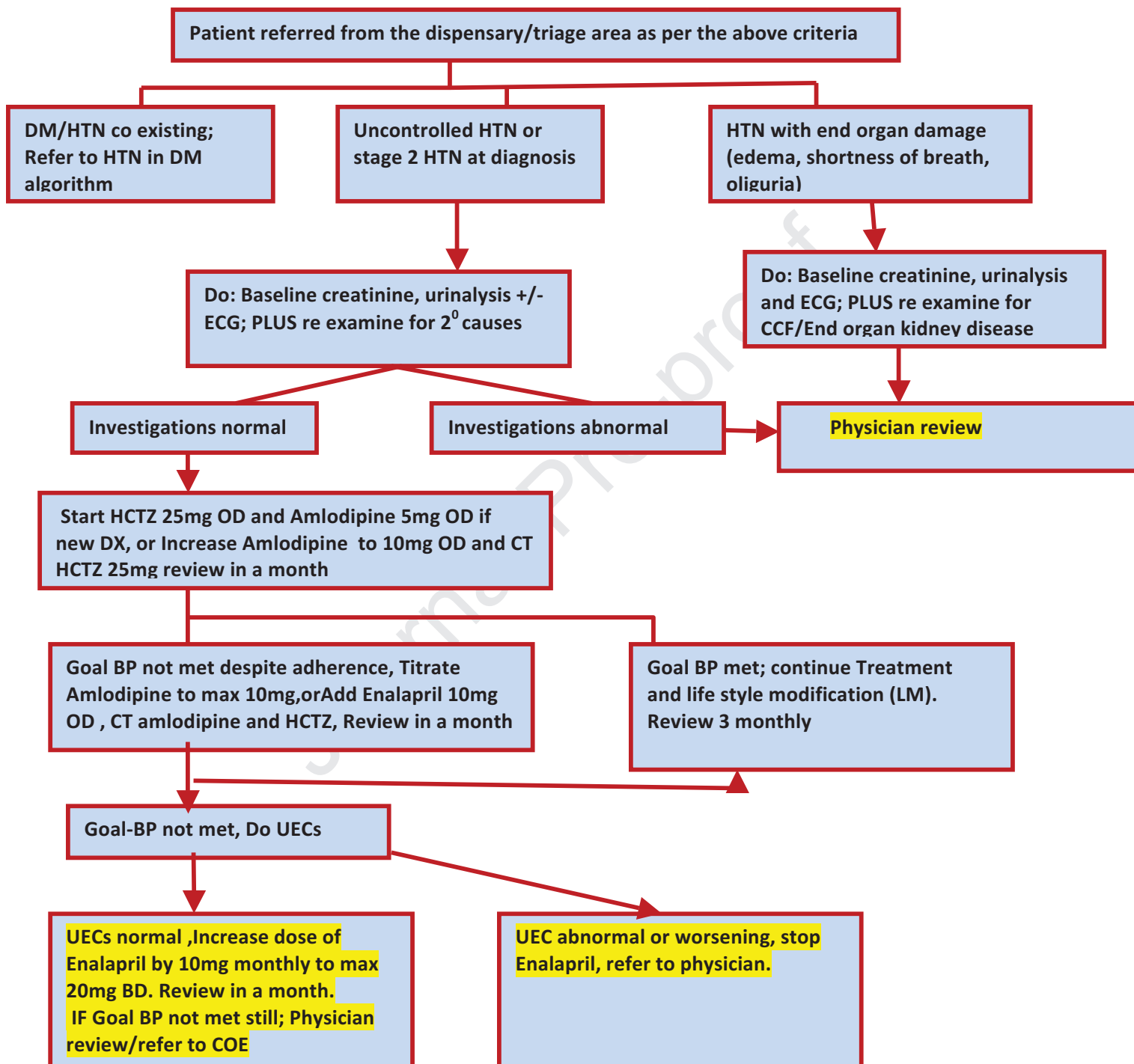
Dispensary care algorithm:



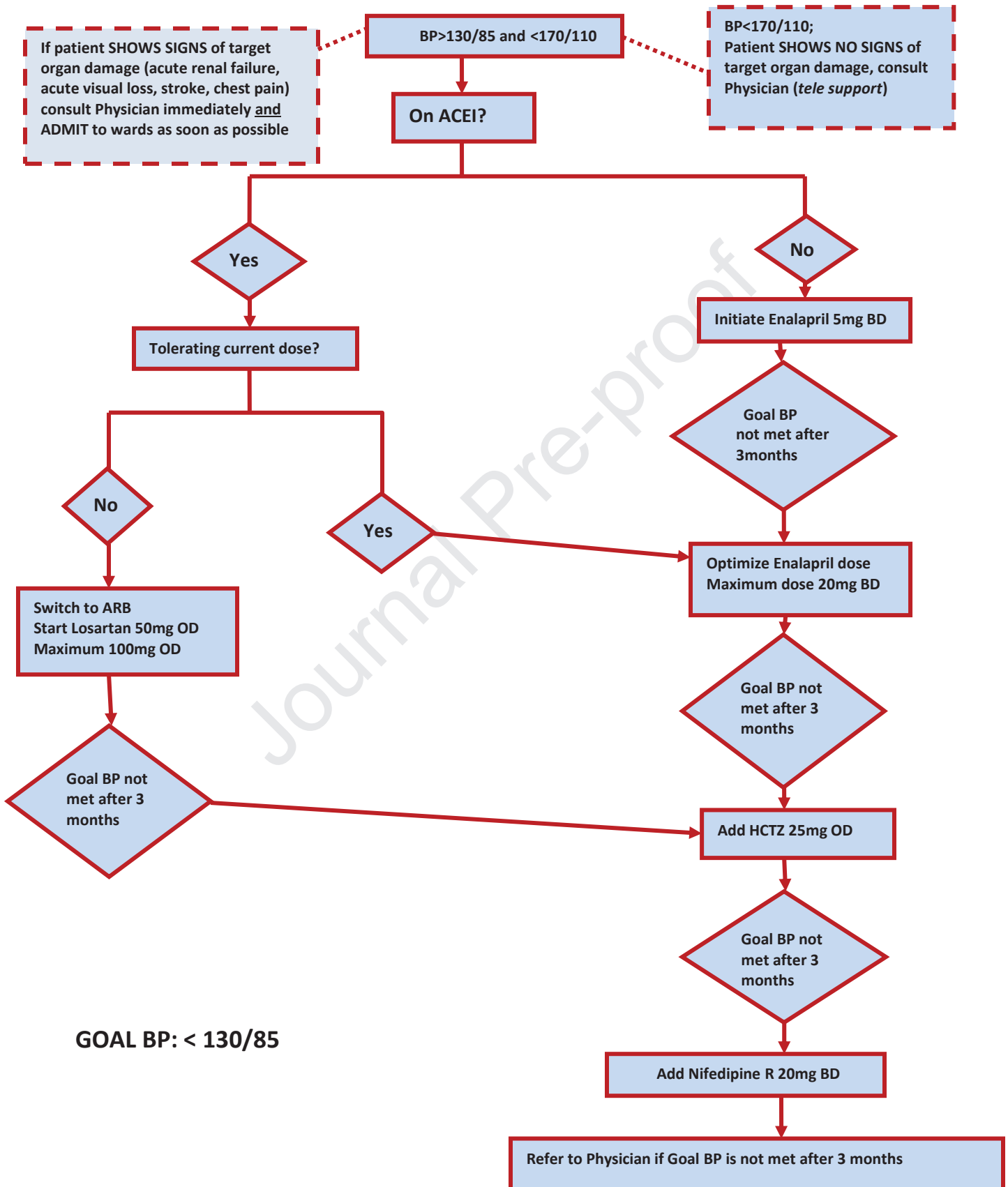
Health center Hypertension (HTN) care algorithm (Htn Algorithm 2)

Entry criteria:

- 1) Stage 2 HTN or BP > 180/110 confirmed at dispensary/triage area
- 2) HTN uncontrolled at dispensary with Rx
- 3) HTN with symptoms of end organ damage
- 4) HTN with Diabetes
- 5) HTN in patient <30years



Management of hypertension in diabetes



Supplemental Tables

Supplemental Table 1. Additional covariates for LARK participants. CHW = community health worker; HCT = home-based counseling and testing.

Variable name	value	Total (n=1460)	Usual Care (n=491)	Paper Based (n=500)	Smart Phone (n=469)
Enrollment Strategy					
	Baraza	1370 (94)	469 (96)	449 (90)	452 (96)
	Newly identified HCT	7 (0)	2 (0)	5 (1)	0 (0)
	Previously identified not linked	29 (2)	7 (1)	17 (3)	5 (1)
	Previously identified not retained	11 (1)	1 (0)	8 (2)	2 (0)
	Health Facility	37 (3)	11 (2)	17 (3)	9 (2)
	Identified by CHW	6 (0)	1 (0)	4 (1)	1 (0)
Aware of hypertensive status					
	Missing	27 (2)	12 (2)	11 (2)	4 (1)
	No	842 (58)	259 (53)	280 (56)	303 (65)
	Yes	591 (40)	220 (45)	209 (42)	162 (35)
Type of tobacco used					
	Chew	45 (40)	9 (39)	15 (35)	21 (45)
	Cigarettes	53 (47)	10 (43)	24 (56)	19 (40)
	Pipe	1 (1)	0 (0)	0 (0)	1 (2)
	Sniff	14 (12)	4 (17)	4 (9)	6 (13)
Servings of alcohol consumed per week					
	<5	124 (64)	26 (67)	52 (60)	46 (68)
	6-10	44 (23)	10 (26)	19 (22)	15 (22)
	11-15	13 (7)	1 (3)	8 (9)	4 (6)
	Missing	12 (6)	2 (5)	7 (8)	3 (4)

Supplemental Table 2. Additional outcome measures for LARK participants. AMRS = AMPATH Medical Records System; BP = blood pressure; CDM = Chronic Disease Program; DBP = diastolic blood pressure; SBP = systolic blood pressure.

Variable Name	value	Total	Usual Care	Paper Based	Smartphone
Link to CDM in 1 year among those with Information					
	No	1048 (83)	312 (76)	385 (86)	351 (86)
	Yes	219 (17)	100 (24)	63 (14)	56 (14)
Link to CDM ever					
	No	1010 (69)	291 (59)	375 (75)	344 (73)
	Yes	257 (18)	121 (25)	73 (15)	63 (13)
	Unable to capture in AMRS	193 (13)	79 (16)	52 (10)	62 (13)
Link to CDM ever among those with Information					
	No	1010 (80)	291 (71)	375 (84)	344 (85)
	Yes	257 (20)	121 (29)	73 (16)	63 (15)
Link Per Tracker					
	No	663 (45)	197 (40)	270 (54)	196 (42)
	Yes	465 (32)	165 (34)	133 (27)	167 (36)
	Unable to Ascertain	332 (23)	129 (26)	97 (19)	106 (23)
Link Per Tracker among those with Information					
	No	663	197	270	196 (54)

		(59)	(54)	(67)	
	Yes	465 (41)	165 (46)	133 (33)	167 (46)
Linkage Overall among those with Information					
	No	414 (37)	117 (32)	186 (46)	111 (31)
	Yes	714 (63)	245 (68)	217 (54)	252 (69)
Follow up and BP Category					
	Have Follow-Up and BP Change Information	1009 (69)	303 (62)	353 (71)	353 (75)
	Have Follow-Up but BP Change Information Missing	97 (7)	52 (11)	42 (8)	3 (1)
	No Follow-Up	354 (24)	136 (28)	105 (21)	113 (24)
Enrollment diastolic BP among those with follow up					
		90.1 (12.0)	90.0 (12.2)	90.4 (12.1)	89.9 (11.7)
	Missing	451	188	147	116
Follow up diastolic BP among those with Baseline DBP					
		90.8 (13.5)	90.1 (13.8)	90.8 (14.0)	91.3 (12.7)
	Missing	451	188	147	116
Follow up systolic BP among those with Baseline SBP					
		149.6 (21.5)	149.7 (22.6)	149.8 (21.1)	149.3 (20.9)
	Missing	451	188	147	116