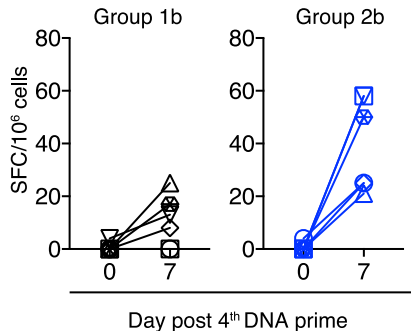
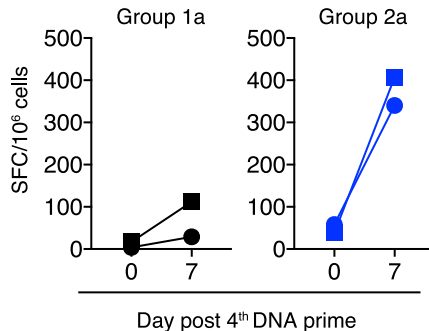


A) Frequency of gp140-specific plasmablasts in Groups 1b and 2b



B) Frequency of gp140-specific plasmablasts in Groups 1a and 2a



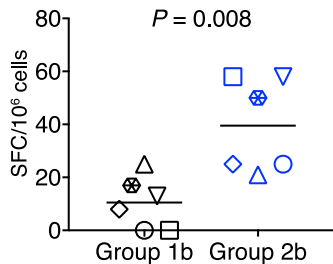
Group 1a

- r14019
- r14130

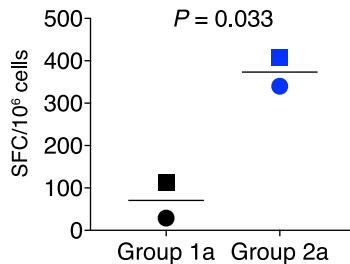
Group 1b

- r14037
- r13037
- △ r14113
- ▽ r15017
- ◇ r15001
- ⊗ r14066

C) gp140-specific plasmablasts in Groups 1b and 2b on day 7 post 4<sup>th</sup> DNA prime



D) gp140-specific plasmablasts in Groups 1a and 2a on day 7 post 4<sup>th</sup> DNA prime



Group 2a

- r14129
- r13053

Group 2b

- r14016
- r10049
- △ r14070
- ▽ r14123
- ◇ r14093
- ⊗ r15018