

Note to readers with disabilities: *EHP* strives to ensure that all journal content is accessible to all readers. However, some figures and Supplemental Material published in *EHP* articles may not conform to [508 standards](#) due to the complexity of the information being presented. If you need assistance accessing journal content, please contact ehp508@niehs.nih.gov. Our staff will work with you to assess and meet your accessibility needs within 3 working days.

Supplemental Material

Ambient Temperature and Markers of Fetal Growth: A Retrospective Observational Study of 29 Million U.S. Singleton Births

Shengzhi Sun, Keith R. Spangler, Kate R. Weinberger, Jeff D. Yanosky, Joseph M. Braun, and Gregory A. Wellenius

Table of Contents

Table S1. Summary statistics of average temperature during the entire pregnancy by county.

Table S2. Summary statistics of average temperature during the entire pregnancy, overall and by geographic region and climate zone.

Table S3. Pearson correlation between overall and trimester-specific temperature and fine particulate matter.

Figure S1. Location of the 403 US counties, 6 National Climate Assessment geographic regions, and 7 US Building America climate zones.

Figure S2. Flow diagram of birth exclusion in this study.

Figure S3. An illustration of how the gridded PRISM data intersect with census tracts in Providence county, RI.

Figure S4. Exposure-response curves for the associations between average temperatures during the entire pregnancy and small for gestational age (A) and birth weight z-score (B) among 31,921,046 births with gestational age ranging from 22 to 44 weeks in 403 US counties between 1989 and 2002. Models were adjusted for maternal age, race, marital status, years of education, smoking or drinking during pregnancy, parity, chronic hypertension, and year and month of conception.

Supplemental Material, Table S1. Summary statistics of average temperature during the entire pregnancy by county.

County FIPS Codes	Temperature Percentile							
	Minimum	10 th	20 th	40 th	50 th	80 th	90 th	Maximum
01015	52.2	55.6	56.8	59.4	61.0	65.0	66.3	69.6
01073	53.3	57.2	58.3	60.9	62.5	66.5	67.7	71.3
01089	50.4	53.9	55.2	58.0	59.7	64.0	65.4	69.1
01097	59.3	62.0	63.0	65.3	66.6	70.2	71.2	74.5
01101	56.9	60.0	61.1	63.5	65.0	68.9	70.1	73.7
01125	54.6	58.0	59.1	61.6	63.2	67.3	68.5	71.6
04013	62.8	66.7	68.1	71.0	72.7	76.8	78.2	81.5
04019	60.5	63.6	64.9	67.5	69.1	73.1	74.3	77.1
05119	53.1	56.1	57.5	60.3	62.1	66.8	68.1	72.8
05143	48.6	51.5	52.9	55.7	57.5	62.2	63.6	67.7
06001	53.6	56.5	57.2	58.6	59.2	61.2	62.2	64.9
06007	53.6	56.6	57.8	59.9	61.3	64.7	65.6	68.9
06013	53.6	56.5	57.3	58.9	59.8	62.4	63.4	66.4
06019	54.8	58.6	59.9	62.3	63.7	67.5	68.6	72.0
06023	49.3	51.4	52.0	53.3	53.9	55.4	56.0	58.4
06029	54.9	59.0	60.3	62.8	64.2	68.0	69.1	72.4
06037	59.4	62.0	63.0	64.5	65.2	67.2	68.0	70.6
06041	52.8	55.6	56.1	57.6	58.2	60.2	61.0	63.4
06047	53.8	57.6	58.8	61.0	62.4	65.9	67.1	70.4
06053	52.4	55.2	55.9	57.0	57.5	58.9	59.9	62.0
06059	59.4	61.8	62.8	64.1	64.8	66.6	67.5	70.0
06061	52.4	55.8	57.0	59.2	60.6	63.9	64.9	68.3
06065	59.4	62.3	63.5	65.6	66.8	69.5	70.4	73.0
06067	54.3	57.5	58.6	60.8	62.1	65.4	66.4	69.7
06071	56.9	59.7	60.9	63.0	64.1	66.8	67.6	70.5
06073	57.4	60.6	61.4	62.9	63.6	65.4	66.2	69.2
06075	53.1	55.9	56.4	57.5	57.9	59.2	60.2	62.5
06077	54.2	57.3	58.4	60.5	61.7	65.1	66.2	69.3
06079	52.9	55.9	56.7	57.9	58.5	60.2	61.0	63.5
06081	53.0	55.6	56.2	57.4	57.9	59.5	60.4	62.7
06083	54.9	57.3	58.1	59.2	59.8	61.2	62.0	64.3
06085	53.6	57.0	57.7	59.2	60.0	62.3	63.3	65.9
06087	51.8	54.5	55.1	56.1	56.5	58.4	59.2	61.4
06089	53.1	56.5	57.8	60.4	61.9	65.5	66.5	70.0
06095	53.8	56.6	57.5	59.4	60.4	63.3	64.4	67.3
06097	52.1	54.9	55.6	57.1	57.9	60.2	61.1	63.5
06099	54.2	58.1	59.1	61.3	62.6	66.1	67.2	70.4
06107	54.7	58.6	59.8	62.1	63.5	67.1	68.2	71.3
06111	56.8	59.0	60.0	61.3	61.9	63.5	64.3	66.6
06113	54.5	57.5	58.5	60.5	61.8	65.2	66.2	69.5
08001	41.9	44.5	45.8	49.0	50.9	55.5	56.6	60.1
08005	41.6	44.1	45.3	48.5	50.4	54.9	56.1	59.5

08013	41.3	43.6	44.9	48.0	49.9	54.6	55.7	59.2
08031	42.2	44.8	46.2	49.4	51.3	55.8	57.0	60.5
08041	39.5	41.9	43.1	46.1	47.9	52.2	53.4	56.8
08059	41.2	43.7	45.0	48.0	49.8	54.2	55.4	58.8
08069	39.9	42.6	43.9	46.9	48.8	53.4	54.6	57.8
08101	43.5	46.0	47.3	50.6	52.6	57.5	58.6	61.9
08123	39.9	42.8	44.1	47.4	49.4	54.4	55.6	59.0
09001	40.6	44.8	46.3	49.2	51.0	56.0	57.4	60.3
09003	38.9	43.2	44.9	47.9	49.7	54.9	56.5	60.0
09005	36.9	41.0	42.6	45.5	47.4	52.6	54.2	57.5
09007	39.0	43.3	44.9	47.9	49.7	54.5	56.2	59.6
09009	39.8	43.9	45.6	48.5	50.3	55.3	56.8	59.9
09011	40.3	44.0	45.5	48.4	50.2	54.8	56.3	59.3
09013	38.0	41.8	43.4	46.3	48.1	53.2	54.8	58.1
10003	45.1	48.1	49.5	52.6	54.4	59.3	60.8	63.4
11001	47.0	50.3	51.9	54.9	56.8	61.4	62.9	66.3
12001	62.9	65.3	66.2	68.0	69.1	72.0	73.1	76.2
12009	68.1	69.9	70.6	71.9	72.7	75.1	75.8	78.4
12011	71.0	74.1	74.8	75.9	76.4	78.3	78.8	81.0
12025	72.3	74.4	75.0	76.0	76.6	78.4	78.9	81.1
12031	62.9	65.6	66.5	68.4	69.5	72.6	73.6	77.1
12033	60.3	63.2	64.3	66.4	67.7	71.1	72.2	75.5
12057	67.6	69.6	70.4	71.9	72.7	75.4	76.2	78.2
12069	65.7	67.8	68.8	70.4	71.3	74.1	75.1	77.6
12071	69.8	72.1	72.8	73.8	74.6	76.7	77.5	79.2
12073	60.3	63.1	64.1	66.0	67.1	70.5	71.6	74.4
12081	68.1	70.3	71.1	72.4	73.2	75.7	76.5	78.8
12083	64.3	66.5	67.5	69.1	70.1	73.0	74.0	76.6
12091	59.2	62.2	63.3	65.5	66.8	70.3	71.4	74.9
12095	67.4	69.4	70.2	71.7	72.6	75.2	76.1	78.5
12099	70.0	72.7	73.5	74.6	75.2	77.1	77.7	79.7
12101	66.5	68.8	69.6	71.1	72.0	74.7	75.6	77.7
12103	68.1	70.3	71.1	72.5	73.4	76.0	76.8	78.9
12105	68.0	69.9	70.7	72.1	73.0	75.5	76.3	78.4
12115	68.3	70.4	71.3	72.6	73.4	75.8	76.6	78.7
12117	67.1	69.0	69.8	71.3	72.2	74.8	75.7	78.3
12127	66.2	68.0	68.9	70.4	71.3	73.9	74.8	77.5
13021	55.6	58.7	59.9	62.4	63.9	67.9	69.0	72.2
13051	59.2	61.9	63.0	65.3	66.6	70.3	71.3	74.3
13063	52.8	56.1	57.4	59.9	61.5	65.8	66.9	70.2
13067	51.5	55.1	56.3	58.9	60.4	64.5	65.8	69.4
13089	52.1	55.7	57.0	59.6	61.1	65.3	66.5	70.1
13121	52.1	55.6	56.9	59.5	61.0	65.2	66.4	69.8
13135	51.9	55.5	56.8	59.3	60.9	65.0	66.2	69.8
13215	56.3	59.5	60.7	63.2	64.6	68.5	69.8	73.1
13245	55.3	58.5	59.7	62.2	63.7	67.6	68.8	72.2
16001	40.3	44.7	46.0	49.0	50.7	55.5	56.8	60.0
17019	40.1	44.3	46.1	48.9	50.9	56.7	58.4	62.7

17031	38.8	43.4	45.2	48.4	50.4	55.9	57.7	62.3
17043	37.5	42.2	44.0	47.0	49.0	54.8	56.7	61.2
17089	36.6	41.4	43.3	46.4	48.4	54.2	56.1	60.4
17097	36.4	41.1	43.1	46.1	48.1	53.7	55.6	60.1
17099	38.3	42.7	44.5	47.4	49.4	55.4	57.2	61.6
17111	35.7	40.4	42.3	45.4	47.4	53.4	55.3	59.6
17113	40.0	44.1	45.9	48.9	50.9	56.9	58.7	62.8
17115	42.0	46.0	47.5	50.4	52.4	58.1	59.6	63.9
17119	44.5	48.6	50.2	53.2	55.0	60.5	62.1	66.2
17143	39.1	43.5	45.5	48.6	50.6	56.5	58.3	62.6
17161	37.9	42.5	44.3	47.4	49.5	55.5	57.2	61.5
17163	45.2	49.1	50.7	53.7	55.6	60.9	62.5	66.3
17167	41.6	45.6	47.3	50.3	52.2	57.9	59.4	63.4
17179	39.9	44.2	46.0	49.0	51.1	56.8	58.5	62.7
17197	38.4	43.0	44.8	47.8	49.8	55.6	57.5	61.9
17201	35.5	40.5	42.3	45.5	47.6	53.5	55.5	59.8
18003	38.9	43.3	45.0	47.9	49.9	55.4	57.2	61.2
18035	39.6	44.0	45.8	48.6	50.6	55.8	57.6	61.5
18039	38.5	42.5	44.2	47.2	49.1	54.4	56.0	60.1
18089	39.4	43.7	45.5	48.5	50.5	55.9	57.7	62.3
18091	39.2	43.1	44.7	47.6	49.6	55.1	56.8	61.0
18095	39.6	44.2	45.9	48.8	50.7	56.0	57.7	61.7
18097	40.9	45.5	47.2	50.1	52.0	57.4	59.1	62.8
18127	39.0	43.1	44.8	47.7	49.7	55.1	56.9	61.3
18141	38.4	42.6	44.3	47.1	49.1	54.5	56.2	60.5
18157	39.7	44.5	46.3	49.2	51.1	56.6	58.4	62.9
18163	46.0	49.8	51.4	54.4	56.2	61.2	62.8	66.4
18167	42.7	46.5	48.3	51.2	53.1	58.5	60.3	64.4
19013	34.3	39.0	41.0	44.5	46.7	53.1	54.9	59.4
19113	35.9	40.5	42.6	45.8	47.9	54.0	55.8	60.0
19153	36.8	41.3	43.5	46.9	49.0	55.1	56.9	61.6
19163	37.7	42.1	44.0	47.1	49.2	55.3	57.0	61.1
20091	44.4	47.8	49.5	52.6	54.6	60.1	61.7	66.0
20173	45.6	49.6	51.1	54.3	56.4	61.8	63.4	67.7
20177	43.8	47.4	49.1	52.3	54.3	59.9	61.6	66.2
20209	44.7	48.0	49.7	53.0	55.0	60.4	62.0	66.2
21067	45.6	49.4	50.8	53.6	55.4	60.1	61.6	64.7
21111	46.1	50.2	51.8	54.6	56.5	61.3	62.7	66.6
21117	43.6	47.9	49.4	52.1	54.0	59.2	60.7	64.1
22017	56.9	59.7	60.8	63.4	65.1	69.3	70.5	74.4
22019	61.0	63.4	64.3	66.6	67.9	71.7	72.7	75.9
22033	60.4	62.7	63.6	65.8	67.2	70.8	71.8	75.3
22051	63.1	65.1	66.1	68.2	69.4	73.0	74.0	76.9
22055	61.3	63.6	64.5	66.7	68.0	71.7	72.6	75.9
22071	63.2	65.3	66.3	68.5	69.8	73.2	74.3	77.3
22073	56.9	59.7	60.8	63.4	65.0	69.1	70.2	73.9
22079	59.0	61.6	62.7	65.1	66.6	70.7	71.7	75.1
22103	61.2	63.3	64.2	66.3	67.7	71.4	72.4	75.6

23005	35.1	38.7	40.3	43.1	45.0	50.5	52.1	55.6
23011	33.4	37.2	39.0	42.0	44.0	49.9	51.6	55.8
23019	32.0	35.7	37.5	40.3	42.4	48.7	50.4	54.7
23031	35.7	39.2	40.8	43.7	45.6	51.1	52.6	55.8
24003	46.2	49.7	51.2	54.1	55.9	60.6	62.1	65.5
24005	45.7	49.2	50.8	53.7	55.5	60.3	61.8	65.4
24021	44.1	47.5	49.1	52.0	53.7	58.6	60.1	63.4
24025	45.3	48.7	50.3	53.2	55.0	59.8	61.3	64.7
24027	45.3	48.7	50.2	53.0	54.7	59.6	61.0	64.4
24031	45.5	48.9	50.5	53.3	55.1	59.8	61.3	64.5
24033	46.3	49.7	51.3	54.3	56.1	60.8	62.2	65.5
24043	43.5	47.0	48.7	51.6	53.4	58.0	59.5	63.1
24510	46.3	49.9	51.6	54.6	56.4	61.1	62.6	66.3
25001	42.1	44.7	46.0	48.7	50.5	54.8	56.1	58.8
25003	34.6	38.4	40.1	42.9	44.8	50.1	51.9	55.4
25005	41.7	44.7	46.1	49.0	50.8	55.5	57.0	59.8
25009	39.7	43.0	44.5	47.4	49.2	54.3	55.8	58.8
25013	38.2	42.4	44.0	47.0	48.9	54.1	55.7	58.9
25015	37.1	41.3	42.9	45.9	47.8	53.0	54.6	57.8
25017	39.5	43.0	44.5	47.5	49.4	54.6	56.1	59.2
25021	40.5	43.8	45.3	48.2	50.0	55.1	56.6	59.5
25023	41.1	44.1	45.6	48.5	50.3	55.0	56.5	59.2
25025	40.9	44.4	45.9	48.9	50.8	55.8	57.2	60.3
25027	37.6	41.2	42.8	45.7	47.6	52.8	54.5	57.7
26017	35.6	40.2	42.0	45.1	47.0	52.5	54.4	59.3
26021	38.1	42.3	43.9	46.7	48.7	53.8	55.5	59.7
26025	36.6	41.3	42.9	46.0	47.9	53.1	54.9	59.1
26049	35.6	40.2	41.9	45.0	47.0	52.3	54.0	58.9
26065	35.7	40.4	42.1	45.0	46.9	52.3	54.1	58.6
26075	36.2	41.0	42.8	45.6	47.6	52.8	54.5	59.1
26077	37.4	41.8	43.4	46.3	48.3	53.7	55.4	59.8
26081	35.5	40.3	42.1	45.0	47.0	52.3	54.0	58.8
26093	36.1	40.7	42.5	45.4	47.4	52.9	54.6	59.3
26099	38.0	42.6	44.3	47.3	49.3	54.8	56.5	61.0
26115	38.9	43.2	44.7	47.8	49.7	55.3	57.0	60.2
26121	36.1	40.9	42.6	45.5	47.3	52.4	54.1	58.2
26125	36.8	41.4	43.1	46.1	48.1	53.6	55.3	60.1
26139	36.8	41.7	43.4	46.2	48.1	53.3	55.0	59.4
26145	35.6	40.2	42.1	45.1	47.1	52.6	54.4	59.4
26147	36.5	40.9	42.7	45.7	47.7	53.1	54.7	59.0
26161	37.0	41.6	43.2	46.1	48.0	53.6	55.3	59.9
26163	38.1	42.8	44.6	47.6	49.6	54.9	56.6	61.4
27003	30.7	36.1	38.3	41.7	44.0	51.0	52.8	57.4
27037	31.3	36.4	38.8	42.2	44.4	51.5	53.4	58.3
27053	31.4	36.7	39.0	42.4	44.8	51.9	53.7	58.4
27123	31.6	37.1	39.2	42.8	45.1	52.1	53.9	58.8
27137	24.3	30.9	32.9	36.3	38.4	45.1	47.0	51.8
27145	28.9	34.0	36.5	39.8	42.1	49.5	51.4	56.1

27163	31.1	36.4	38.7	42.1	44.3	51.4	53.2	57.9
28047	60.2	62.7	63.7	65.9	67.3	70.8	71.8	75.3
28049	56.9	59.5	60.7	63.3	64.9	68.8	69.9	73.3
28059	59.4	62.1	63.2	65.5	66.8	70.2	71.3	74.6
29019	44.4	47.7	49.3	52.3	54.3	59.8	61.5	65.4
29047	43.8	46.9	48.7	51.8	53.8	59.4	61.0	65.2
29077	45.6	48.8	50.2	53.0	54.9	59.9	61.5	65.7
29095	44.6	47.8	49.5	52.7	54.6	60.1	61.7	65.9
29099	45.1	48.9	50.5	53.4	55.2	60.6	62.2	66.3
29183	44.2	48.4	50.0	52.9	54.9	60.3	61.9	65.9
29189	45.2	49.1	50.8	53.8	55.7	61.1	62.7	66.8
29510	45.7	49.4	51.0	54.1	56.0	61.4	63.0	66.9
30111	36.4	40.1	41.8	45.2	47.1	52.2	53.6	57.2
31055	39.0	42.9	44.8	48.2	50.3	56.4	58.2	62.7
31109	39.7	43.8	45.5	48.8	51.1	57.1	58.8	63.1
32003	57.6	61.6	63.0	66.2	68.1	72.8	74.3	78.0
32031	43.0	46.3	47.8	50.6	52.2	56.1	57.3	61.9
33011	36.8	40.5	42.1	45.1	46.9	52.3	53.9	57.3
33015	37.4	40.8	42.4	45.2	47.1	52.6	54.2	57.5
34001	44.9	48.1	49.6	52.5	54.2	58.8	60.3	62.9
34003	42.9	46.8	48.2	51.1	53.0	58.0	59.6	62.6
34005	44.8	48.2	49.6	52.5	54.2	59.1	60.6	63.2
34007	45.7	49.0	50.4	53.4	55.1	60.0	61.5	64.2
34011	45.2	48.4	49.8	52.7	54.4	59.2	60.6	63.4
34013	42.7	46.6	48.2	51.2	53.0	57.9	59.4	62.7
34015	45.5	48.7	50.1	53.1	54.8	59.7	61.1	63.9
34017	44.2	48.1	49.7	52.8	54.6	59.5	61.0	64.1
34021	43.4	47.0	48.4	51.3	53.2	57.9	59.4	62.2
34023	42.9	46.9	48.5	51.5	53.3	58.1	59.6	62.5
34025	43.8	47.5	48.8	51.7	53.4	58.1	59.5	62.1
34027	40.1	43.8	45.4	48.2	49.9	55.0	56.6	59.8
34029	44.4	47.5	49.0	51.8	53.5	58.2	59.6	62.4
34031	41.9	45.8	47.3	50.3	52.1	57.1	58.7	61.7
34035	41.8	45.5	47.1	49.9	51.7	56.7	58.1	61.1
34037	38.5	42.2	43.7	46.6	48.4	53.5	55.2	58.0
34039	43.0	47.1	48.7	51.6	53.5	58.4	59.8	63.2
35001	46.7	49.1	50.4	53.2	55.1	59.9	61.1	64.6
36001	37.0	41.1	42.8	45.8	47.7	53.3	55.0	58.2
36005	44.1	48.2	49.8	52.8	54.7	59.5	60.9	64.0
36007	35.5	39.9	41.4	44.4	46.3	51.4	53.0	56.5
36013	36.1	40.5	42.2	45.0	46.8	51.9	53.5	57.1
36027	38.4	42.8	44.2	47.2	49.1	54.3	55.8	59.3
36029	36.6	40.9	42.5	45.4	47.3	52.5	54.2	58.1
36047	44.0	48.2	49.8	52.9	54.7	59.4	60.7	63.8
36055	37.2	41.6	43.2	46.1	48.0	53.2	54.9	58.4
36059	43.0	47.0	48.5	51.4	53.2	57.9	59.3	62.4
36061	44.3	48.3	49.9	53.0	54.8	59.7	61.1	64.3
36063	37.3	41.5	43.1	46.1	48.0	53.3	55.0	59.0

36065	34.7	39.3	41.1	44.1	46.1	51.8	53.5	58.1
36067	35.7	40.6	42.2	45.2	47.1	52.6	54.3	58.3
36071	39.0	43.2	44.7	47.7	49.6	54.7	56.2	59.4
36075	35.5	40.0	41.7	44.7	46.5	51.9	53.7	57.4
36081	44.0	48.1	49.7	52.7	54.6	59.3	60.6	63.7
36083	36.4	40.7	42.3	45.2	47.1	52.7	54.4	57.8
36085	43.8	48.1	49.7	52.6	54.4	59.2	60.6	63.8
36087	41.1	45.2	46.7	49.7	51.5	56.4	57.9	60.8
36089	31.8	36.3	38.1	41.2	43.3	49.6	51.5	55.6
36091	36.1	40.3	41.9	44.9	46.8	52.5	54.2	57.8
36093	36.7	40.7	42.2	45.3	47.2	52.9	54.5	58.0
36103	42.2	46.1	47.6	50.5	52.3	57.1	58.4	61.7
36111	37.9	42.3	43.8	46.8	48.7	53.8	55.4	58.6
36119	42.3	46.3	47.8	50.8	52.6	57.6	59.0	62.1
37021	46.0	49.4	50.7	53.0	54.6	58.5	59.8	63.0
37035	49.1	52.8	54.1	56.6	58.2	62.4	63.7	67.0
37051	52.9	56.3	57.6	60.3	61.9	65.9	67.1	70.3
37057	49.2	52.9	54.2	56.9	58.6	62.8	64.1	66.8
37063	50.1	53.7	54.9	57.7	59.4	63.7	64.9	67.6
37067	48.8	52.3	53.6	56.4	58.0	62.2	63.5	66.2
37071	51.0	54.6	55.8	58.5	60.0	64.1	65.2	68.9
37081	49.4	52.8	54.1	56.8	58.5	62.8	64.1	66.9
37119	51.4	54.9	56.0	58.6	60.2	64.5	65.6	68.9
37129	55.4	58.3	59.4	61.8	63.3	67.1	68.2	71.0
37133	54.3	57.4	58.6	60.9	62.3	66.3	67.4	70.5
37155	54.1	56.8	58.1	60.7	62.2	66.2	67.3	70.3
37183	50.9	54.3	55.5	58.2	59.8	64.0	65.1	67.9
39003	39.6	44.3	45.9	48.9	50.8	56.3	58.0	61.9
39017	42.4	46.9	48.3	51.2	53.1	58.2	59.7	63.3
39023	40.0	44.8	46.3	49.3	51.3	56.3	57.9	61.5
39025	43.4	47.8	49.2	52.0	53.8	59.0	60.5	63.8
39029	39.4	43.4	45.0	47.8	49.6	54.6	56.0	59.7
39035	39.8	43.9	45.6	48.4	50.3	55.4	57.0	60.8
39049	41.4	45.8	47.5	50.4	52.3	57.4	59.1	62.6
39057	41.1	45.7	47.2	50.2	52.2	57.4	59.0	62.2
39061	43.5	47.9	49.4	52.2	54.1	59.2	60.7	64.2
39085	40.0	44.0	45.7	48.4	50.3	55.3	56.9	60.8
39089	39.8	44.3	45.9	48.7	50.6	55.6	57.1	61.1
39093	39.3	43.8	45.5	48.4	50.3	55.4	57.1	60.9
39095	39.1	43.7	45.3	48.4	50.4	55.7	57.4	61.5
39099	38.8	42.7	44.4	47.2	49.1	54.0	55.7	59.2
39103	38.7	43.2	44.7	47.5	49.4	54.6	56.3	60.0
39113	41.4	46.1	47.7	50.6	52.6	57.8	59.5	63.0
39133	39.0	42.9	44.6	47.6	49.4	54.3	55.9	59.6
39139	38.0	42.5	44.1	47.0	48.9	54.0	55.7	59.6
39151	39.4	43.7	45.3	48.2	50.1	55.2	56.7	60.6
39153	39.2	43.5	45.1	48.1	50.0	55.0	56.6	60.3
39155	38.8	42.8	44.5	47.5	49.2	54.1	55.8	59.4

39173	39.1	43.3	44.9	47.9	50.0	55.3	57.1	61.1
40027	51.3	54.2	55.5	58.7	60.5	65.4	66.8	71.5
40031	52.4	55.4	56.6	59.7	61.5	66.2	67.6	72.8
40109	50.9	54.0	55.3	58.4	60.3	65.2	66.6	71.5
40143	49.8	53.2	54.6	57.7	59.5	64.4	66.0	70.6
41005	47.0	49.3	50.1	52.2	53.3	56.1	56.9	60.2
41029	45.6	48.8	49.8	52.4	53.7	56.9	57.7	61.7
41039	46.6	49.0	49.7	51.9	52.9	55.6	56.3	59.7
41047	46.8	49.1	49.9	52.1	53.2	55.9	56.6	60.1
41051	47.2	49.4	50.2	52.4	53.5	56.3	57.1	60.3
41067	46.7	49.0	49.9	52.0	53.2	56.0	56.8	60.1
42003	41.9	45.4	47.0	49.8	51.6	56.5	58.0	61.6
42007	41.3	44.8	46.4	49.1	50.9	55.8	57.2	60.8
42011	41.7	45.4	47.0	49.9	51.8	56.8	58.2	61.6
42013	39.0	42.8	44.6	47.4	49.3	54.2	55.7	59.6
42017	43.1	46.8	48.2	51.1	53.0	57.8	59.3	62.0
42019	39.5	43.1	44.8	47.6	49.4	54.2	55.8	59.3
42021	38.4	41.9	43.5	46.2	48.0	52.9	54.4	57.9
42027	38.9	42.5	44.1	47.0	48.8	53.9	55.5	59.0
42029	42.5	46.1	47.5	50.4	52.2	57.1	58.6	61.4
42041	42.1	45.8	47.4	50.3	52.2	57.2	58.6	62.1
42043	41.9	45.6	47.2	50.2	52.1	57.1	58.5	62.1
42045	45.0	48.5	49.9	53.0	54.8	59.6	61.1	64.0
42049	37.9	42.1	43.7	46.6	48.5	53.5	55.1	59.2
42051	41.1	45.0	46.5	49.3	51.1	55.8	57.2	60.5
42055	42.4	45.9	47.6	50.3	52.2	57.0	58.5	62.3
42069	37.5	41.3	42.8	45.7	47.6	52.7	54.3	57.8
42071	42.6	46.3	47.8	50.8	52.6	57.4	58.9	62.3
42075	41.8	45.5	47.1	50.0	51.8	56.8	58.2	61.8
42077	41.1	44.8	46.3	49.2	51.1	56.0	57.6	60.8
42079	38.5	42.0	43.6	46.5	48.4	53.5	55.1	58.8
42081	38.4	42.5	44.0	47.0	48.7	53.9	55.4	58.7
42085	38.4	42.4	44.1	47.0	48.7	53.7	55.3	58.9
42091	43.2	46.9	48.2	51.2	53.0	57.9	59.4	62.2
42095	40.7	44.4	46.0	48.9	50.8	55.8	57.3	60.7
42101	45.3	48.8	50.2	53.4	55.2	60.0	61.4	64.0
42107	38.5	42.2	43.9	46.8	48.6	53.6	55.1	58.7
42125	40.9	44.7	46.3	49.1	50.9	55.6	57.2	60.7
42129	41.1	44.6	46.1	48.9	50.7	55.5	56.9	60.3
42133	42.4	46.0	47.6	50.4	52.2	57.0	58.5	61.8
44003	41.4	44.6	46.1	49.0	50.8	55.5	57.0	59.9
44007	41.1	44.3	45.8	48.8	50.6	55.4	56.9	59.8
45003	55.1	58.2	59.4	61.8	63.4	67.4	68.7	71.8
45007	52.5	55.8	57.0	59.5	61.1	65.2	66.4	69.5
45019	58.2	60.8	62.0	64.3	65.7	69.4	70.6	73.7
45041	55.3	58.0	59.3	61.8	63.4	67.4	68.6	71.4
45045	51.8	55.0	56.3	58.9	60.4	64.5	65.8	68.7
45051	56.3	58.9	60.0	62.3	63.8	67.7	68.8	71.6

45063	54.4	57.4	58.7	61.2	62.8	67.0	68.2	71.2
45079	54.9	57.7	59.0	61.6	63.2	67.4	68.6	71.3
45083	51.6	54.6	55.7	58.4	60.0	64.2	65.3	68.1
45091	51.5	54.8	56.0	58.6	60.2	64.4	65.6	68.7
46099	30.9	36.6	39.0	42.5	44.8	51.5	53.5	57.7
47037	48.3	52.2	53.7	56.5	58.3	62.8	64.2	67.9
47065	49.2	53.4	54.8	57.5	59.1	63.5	65.0	68.5
47093	47.5	51.7	53.0	55.7	57.3	61.9	63.2	66.5
47157	52.2	55.4	56.8	59.6	61.3	66.0	67.3	71.5
47163	46.4	50.4	51.7	54.3	55.9	60.3	61.6	64.8
48027	58.7	61.1	62.2	64.8	66.4	70.4	71.7	75.3
48029	61.7	64.5	65.5	67.7	69.2	73.0	74.1	76.9
48039	63.5	65.6	66.4	68.6	69.8	73.3	74.3	77.2
48061	68.6	70.5	71.6	73.2	74.2	77.2	78.1	80.3
48085	56.3	58.8	60.0	62.9	64.6	69.2	70.5	75.1
48113	57.1	59.8	60.9	63.8	65.5	70.0	71.2	76.0
48121	56.4	59.1	60.3	63.2	64.9	69.6	70.9	75.5
48135	56.0	58.9	60.0	62.7	64.5	69.0	70.4	74.1
48141	56.3	58.8	60.0	62.6	64.3	69.0	70.2	73.0
48157	63.2	65.5	66.4	68.7	69.9	73.6	74.5	77.8
48167	63.0	65.4	66.3	68.5	69.7	73.1	74.1	77.1
48201	63.1	65.3	66.2	68.5	69.8	73.4	74.4	77.5
48215	68.7	70.9	71.9	73.7	74.8	78.0	79.0	81.3
48245	61.3	63.9	64.7	67.1	68.4	72.0	73.1	76.3
48303	52.0	54.5	55.6	58.4	60.2	64.9	66.2	69.8
48309	58.4	60.9	61.9	64.8	66.4	70.6	71.8	75.7
48339	61.6	63.8	64.8	67.1	68.4	72.2	73.2	76.4
48355	66.3	68.3	69.2	71.1	72.2	75.5	76.5	79.1
48423	57.6	60.1	61.1	63.6	65.3	69.5	70.7	74.4
48439	57.2	59.7	60.9	63.7	65.4	70.0	71.3	75.9
48441	55.6	58.7	59.8	62.6	64.3	68.8	70.1	74.7
48453	60.2	62.7	63.8	66.3	67.8	71.8	72.9	76.1
48485	54.4	57.2	58.5	61.6	63.4	68.2	69.6	73.6
49011	41.0	44.3	45.6	49.0	50.9	56.2	57.8	61.9
49035	42.1	45.4	46.8	50.2	52.1	57.1	58.5	63.1
49049	41.3	44.4	45.8	49.0	50.9	56.0	57.4	61.3
49057	39.6	43.2	44.5	47.9	49.8	55.4	56.9	60.9
50007	32.9	37.1	38.9	41.9	43.9	50.3	52.1	56.2
51013	46.9	50.3	52.0	54.8	56.7	61.4	62.7	66.0
51041	48.0	51.5	52.9	55.6	57.3	61.9	63.3	66.5
51059	46.1	49.5	51.1	53.8	55.7	60.5	61.8	65.4
51087	47.9	51.4	52.8	55.6	57.4	61.9	63.3	66.4
51153	46.2	49.5	51.1	53.8	55.6	60.3	61.7	65.1
51510	47.2	50.8	52.4	55.3	57.1	61.8	63.2	66.6
51550	51.3	54.7	55.9	58.7	60.2	64.4	65.6	69.2
51650	51.2	54.6	55.8	58.6	60.2	64.3	65.5	68.4
51700	50.9	54.5	55.7	58.4	60.1	64.3	65.5	68.4
51710	51.3	54.8	56.1	58.8	60.4	64.5	65.7	68.7

51740	51.5	54.9	56.2	58.8	60.5	64.7	65.9	69.0
51760	48.0	51.5	53.0	55.9	57.6	62.1	63.5	66.5
51810	51.3	54.7	55.9	58.5	60.1	64.2	65.5	68.3
53005	43.8	47.9	49.1	51.9	53.6	58.0	59.2	62.2
53011	46.4	48.5	49.3	51.4	52.5	55.4	56.2	59.3
53033	46.6	48.4	49.2	51.2	52.3	54.9	55.8	58.1
53035	45.8	47.8	48.6	50.6	51.7	54.3	55.1	57.5
53053	45.4	47.5	48.3	50.4	51.4	54.0	54.8	57.5
53061	45.9	47.5	48.3	50.1	51.2	53.8	54.7	56.5
53063	38.8	42.2	43.6	46.5	48.1	52.4	53.5	57.2
53067	44.6	46.7	47.6	49.6	50.6	53.1	54.1	56.8
53073	44.6	46.8	47.7	49.6	50.6	53.4	54.3	56.4
53077	41.2	45.0	46.2	49.0	50.8	55.0	56.2	59.5
54039	44.9	48.6	49.9	52.7	54.4	59.1	60.4	63.6
55009	31.6	37.0	38.9	41.9	44.0	50.1	52.0	56.9
55025	33.2	38.6	40.4	43.6	45.6	51.8	53.7	58.2
55059	35.6	40.4	42.3	45.3	47.3	52.8	54.7	59.0
55073	29.1	34.7	36.6	40.2	42.2	48.8	50.6	56.4
55079	35.5	40.6	42.5	45.7	47.7	53.2	55.1	59.8
55087	31.9	37.4	39.2	42.4	44.6	50.8	52.7	57.8
55101	35.3	40.2	42.0	45.1	47.1	52.6	54.5	58.9
55105	34.8	39.7	41.5	44.8	46.9	52.9	54.8	58.9
55117	33.2	38.4	40.3	43.4	45.4	50.8	52.6	57.1
55133	34.4	39.4	41.4	44.4	46.5	52.5	54.4	59.0
55139	32.3	37.8	39.6	42.9	45.0	51.3	53.2	58.2

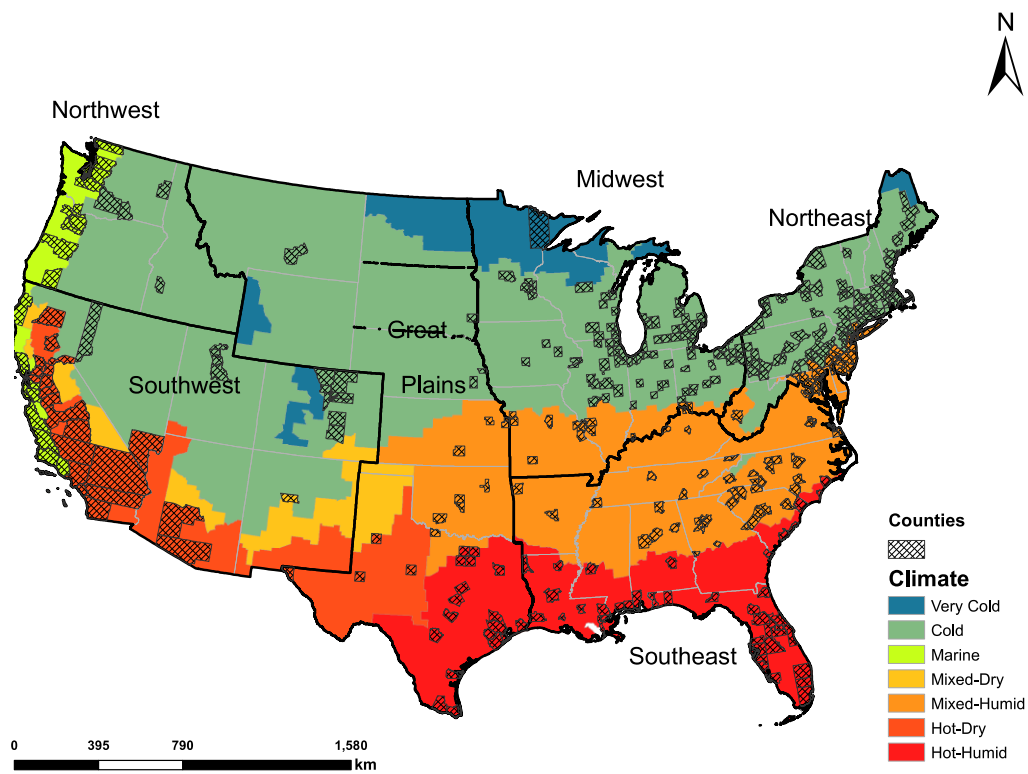
Supplemental Material, Table S2. Summary statistics of average temperature during the entire pregnancy, overall and by geographic region and climate zone.

Subgroup	Temperature Percentile							
	Minimum	10th	20th	40th	50th	80th	90th	Maximum
Overall	46.1	49.7	51.1	53.8	55.5	60.0	61.4	64.9
Geographic region								
Northeast	40.6	44.4	46.0	48.9	50.7	55.8	57.3	60.6
Southeast	55.6	58.6	59.8	62.1	63.6	67.4	68.6	71.7
Midwest	38.1	42.6	44.4	47.4	49.4	55.0	56.7	60.9
Great Plains	55.2	57.9	59.2	61.9	63.5	68.0	69.3	73.1
Northwest	44.9	47.5	48.4	50.7	52.0	55.1	56.0	59.0
Southwest	50.8	53.7	54.8	57.1	58.4	61.7	62.8	65.9
Climate zone								
Hot-Humid	62.3	64.8	65.7	67.8	69.0	72.4	73.4	76.4
Mixed-Humid	47.8	51.3	52.7	55.5	57.3	61.9	63.3	66.7
Hot-Dry/Mixed-Dry	55.5	58.6	59.8	62.1	63.4	66.9	68.0	71.2
Cold/Very Cold	38.2	42.3	44.0	47.0	48.9	54.2	55.9	59.7
Marine	49.4	51.8	52.6	54.3	55.2	57.4	58.3	60.9

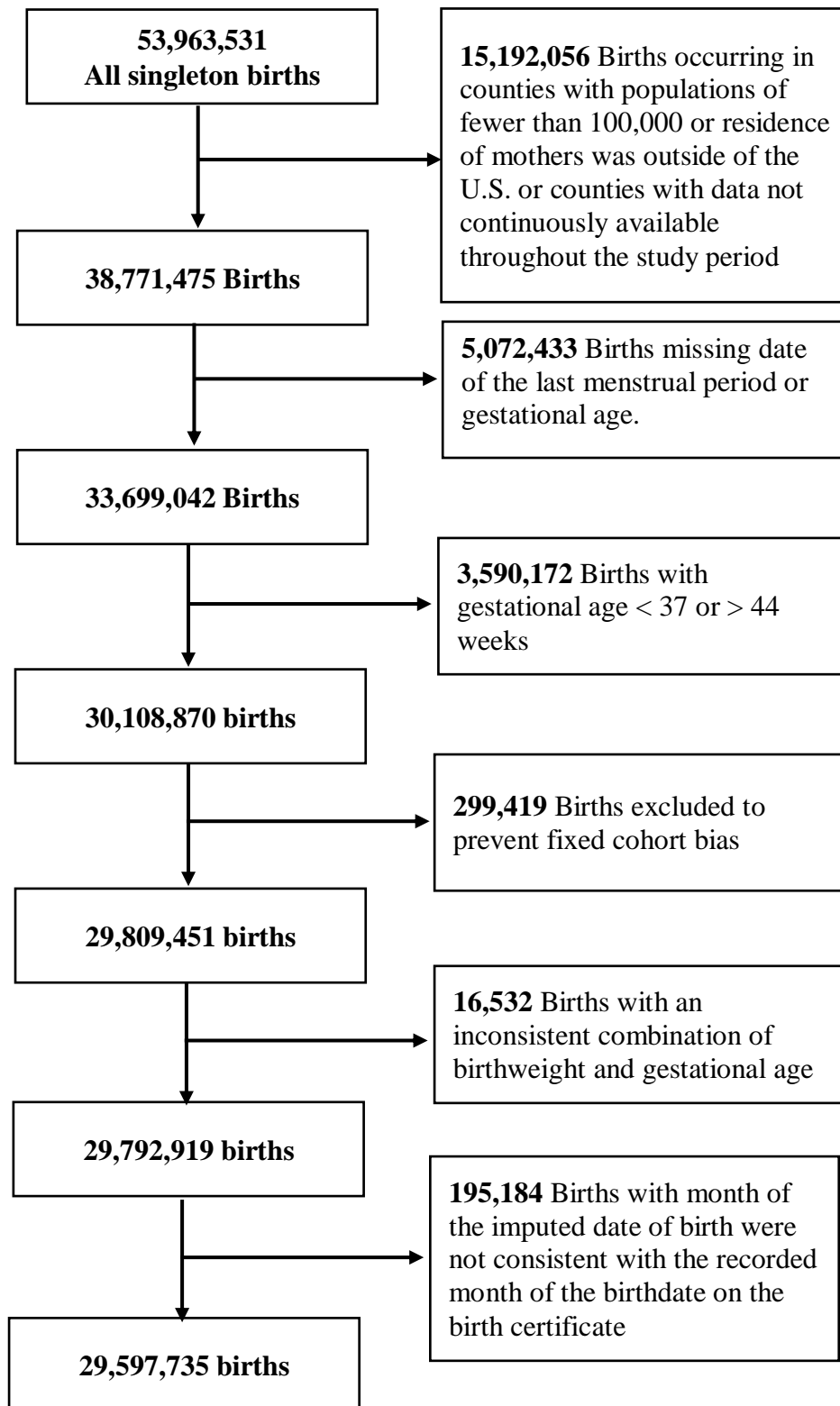
Supplemental Material, Table S3. Pearson correlation between overall and trimester-specific temperature and fine particulate matter.

Variable	Temperature			Entire Pregnancy	PM _{2.5}		
	1 st trimester	2 nd trimester	3 rd trimester		1 st trimester	2 nd trimester	3 rd trimester
Entire pregnancy temperature	0.49	0.86	0.48	-0.15	-0.17	-0.08	-0.13
1 st trimester temperature		0.29	-0.41	-0.08	0.06	-0.04	-0.24
2 nd trimester temperature			0.29	-0.06	-0.13	0.04	-0.05
3 rd trimester temperature				-0.13	-0.25	-0.14	0.05
Entire pregnancy PM _{2.5}					0.85	0.89	0.85
1 st trimester PM _{2.5}						0.66	0.55
2 nd trimester PM _{2.5}							0.67

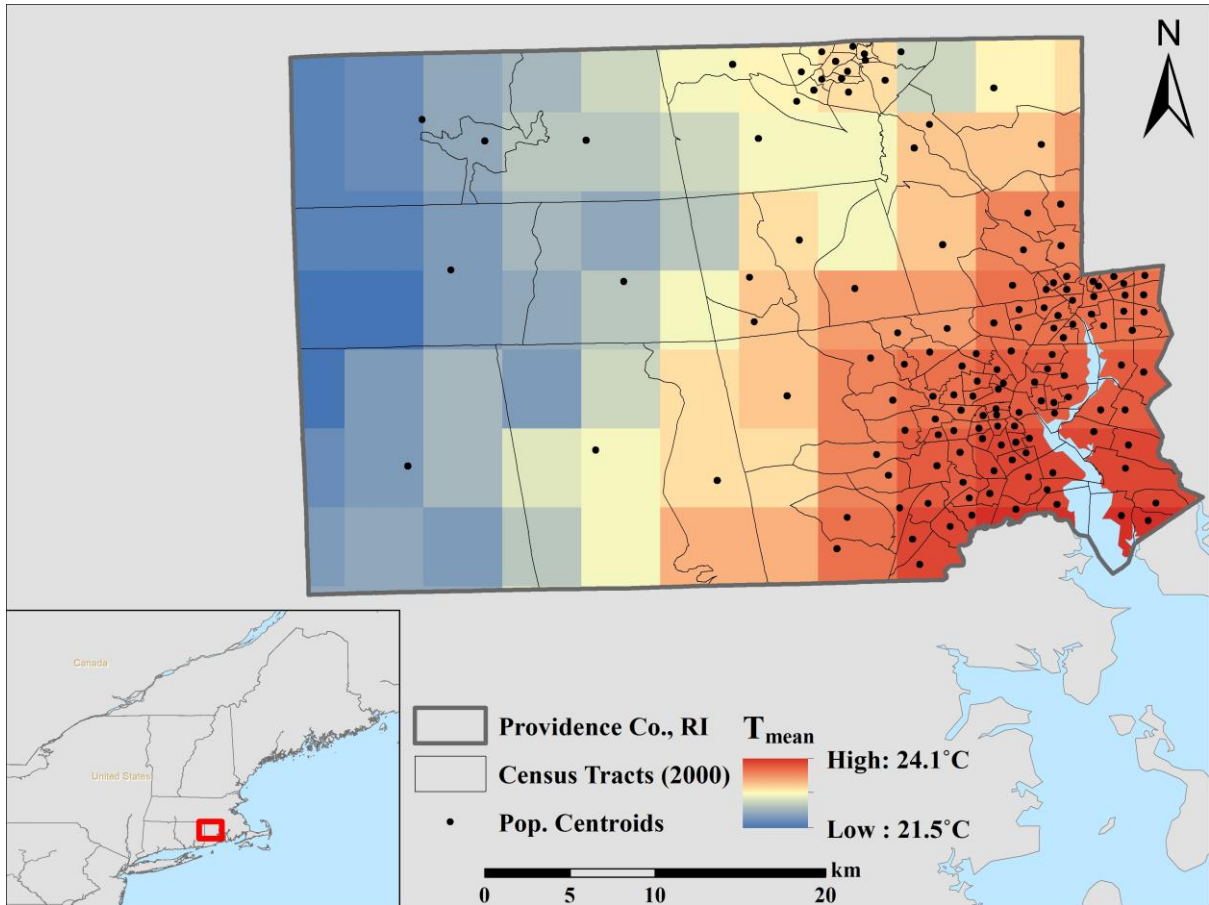
Abbreviations: PM_{2.5}=fine particulate matter.



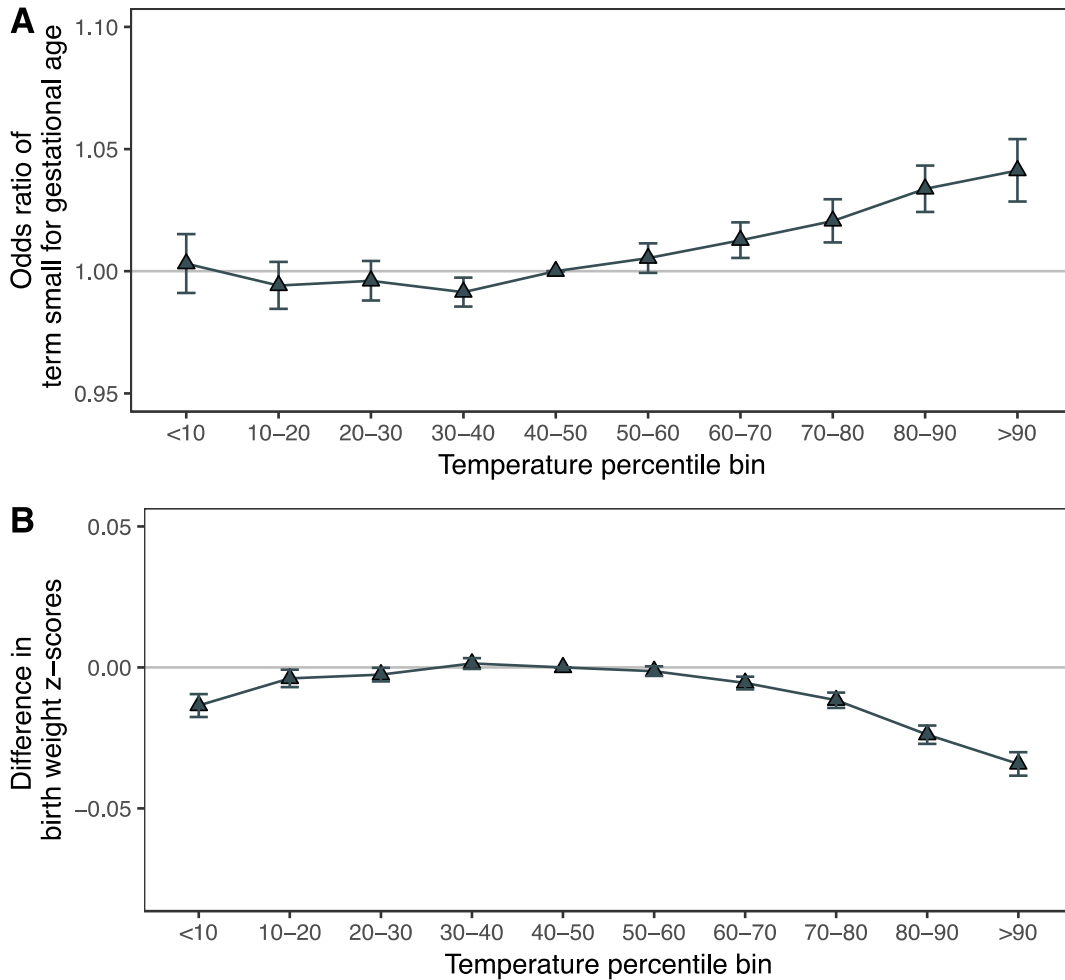
Supplemental Material, Figure S1. Location of the 403 US counties, 6 National Climate Assessment geographic regions, and 7 US Building America climate zones.



Supplemental Material, Figure S2. Flow diagram of birth exclusion in this study.



Supplemental Material, Figure S3. An illustration of how the gridded PRISM data intersect with census tracts in Providence county, RI.



Supplemental Material, Figure S4. Exposure-response curves for the associations between average temperatures during the entire pregnancy and small for gestational age (A) and birth weight z-score (B) among 31,921,046 births with gestational age ranging from 22 to 44 weeks in 403 US counties between 1989 and 2002.

Models were adjusted for maternal age, race, marital status, years of education, smoking or drinking during pregnancy, parity, chronic hypertension, and year and month of conception.