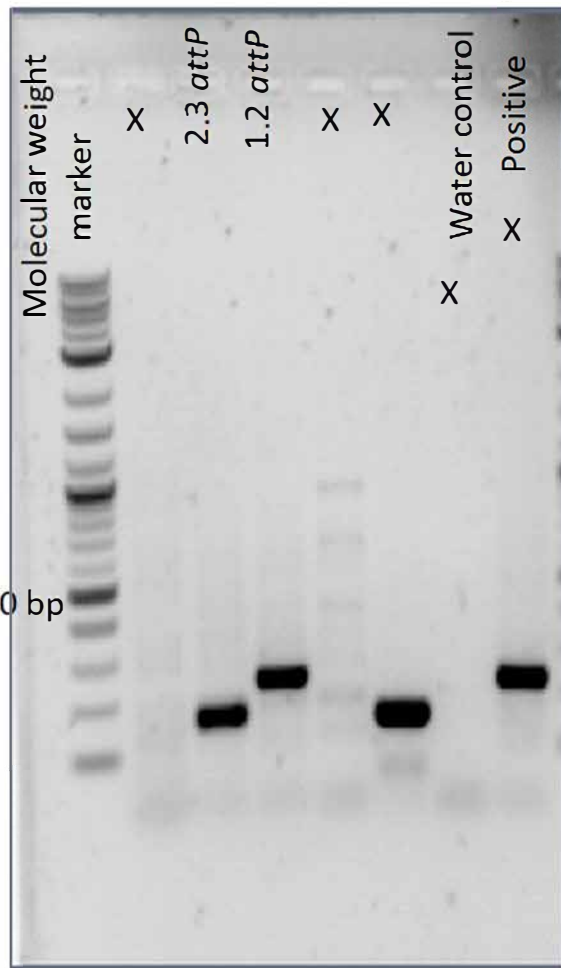


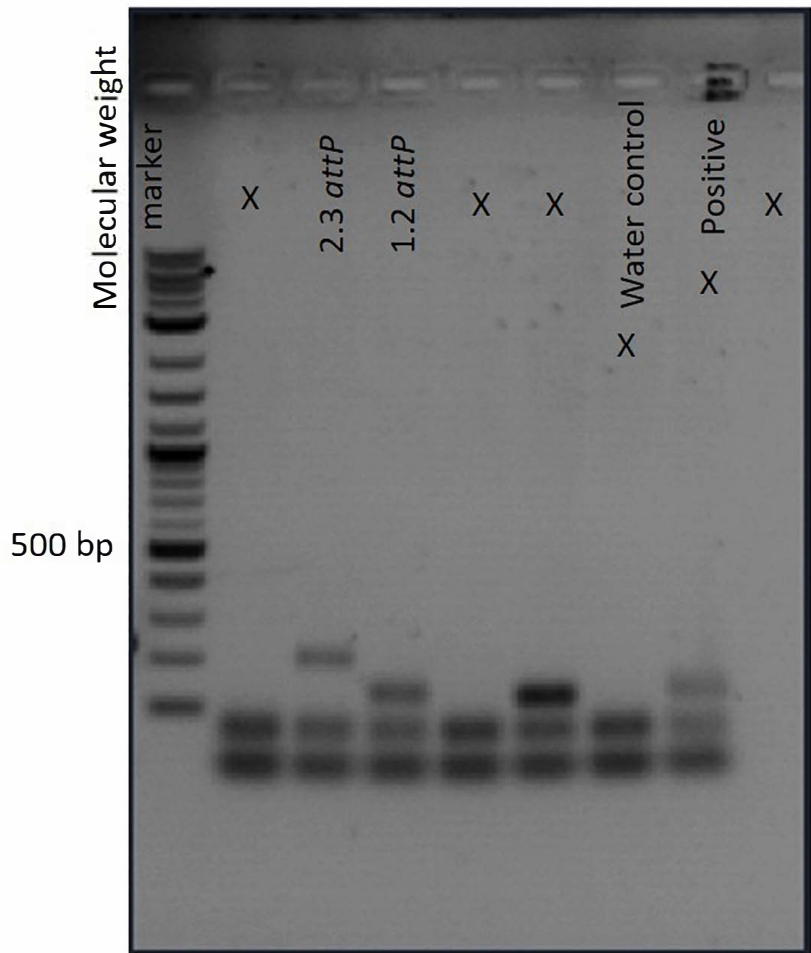
Method to capture image: Quantity one software Biorad

Figure panel: Figure 1(B)

Recombined *H11* allele- at 3' junction (2,4)

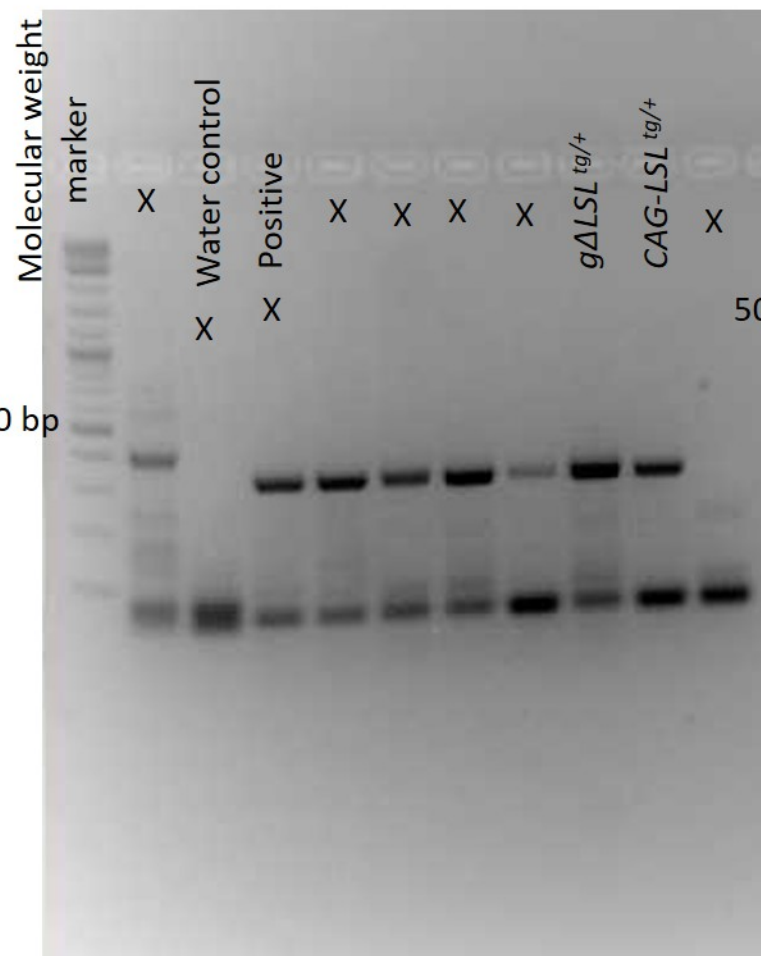


Recombined *H11* allele- at 5' junction (1,3)



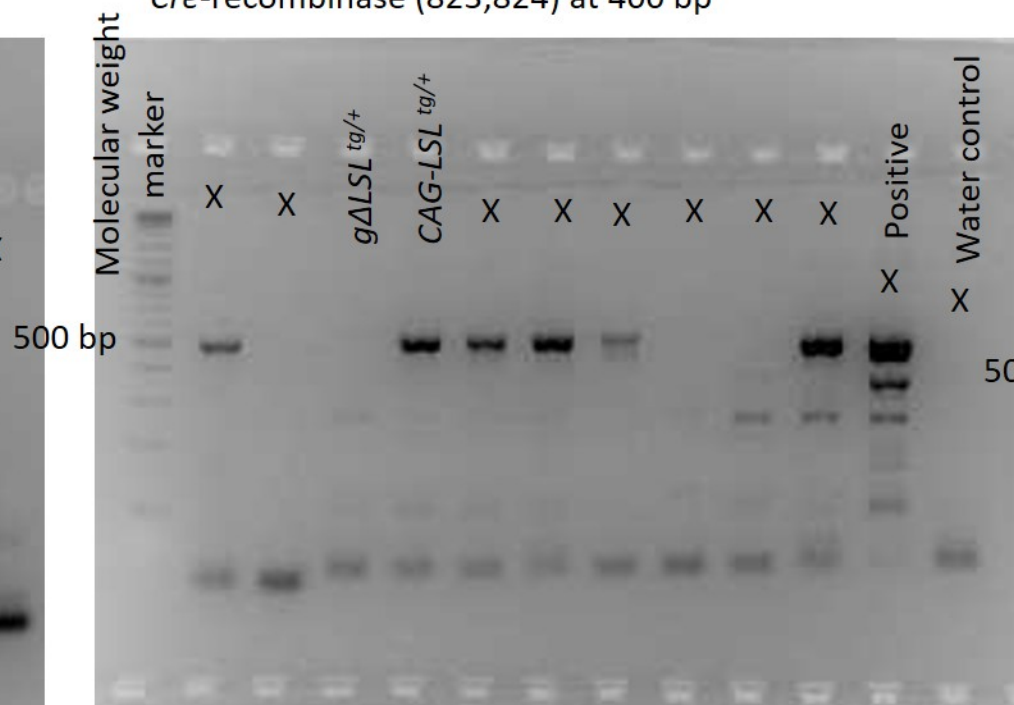
Method to capture image: Quantity one software Biorad
Figure panel: Figure 1(D)

H11 allele (896,897) at 356 bp

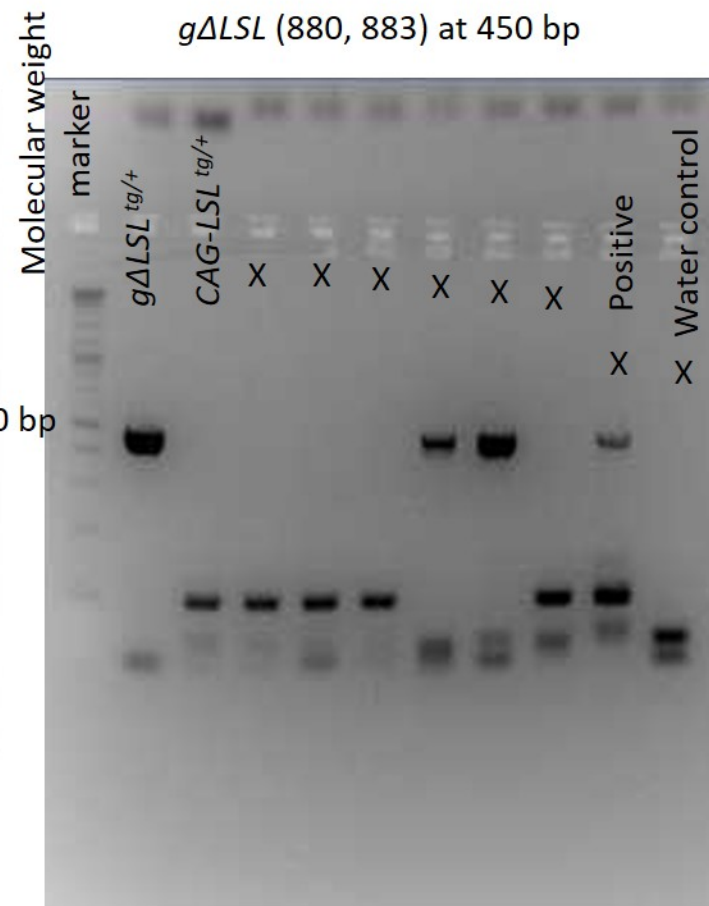


CAG-LSL-HA-hPIT1 (879,883) at 530 bp

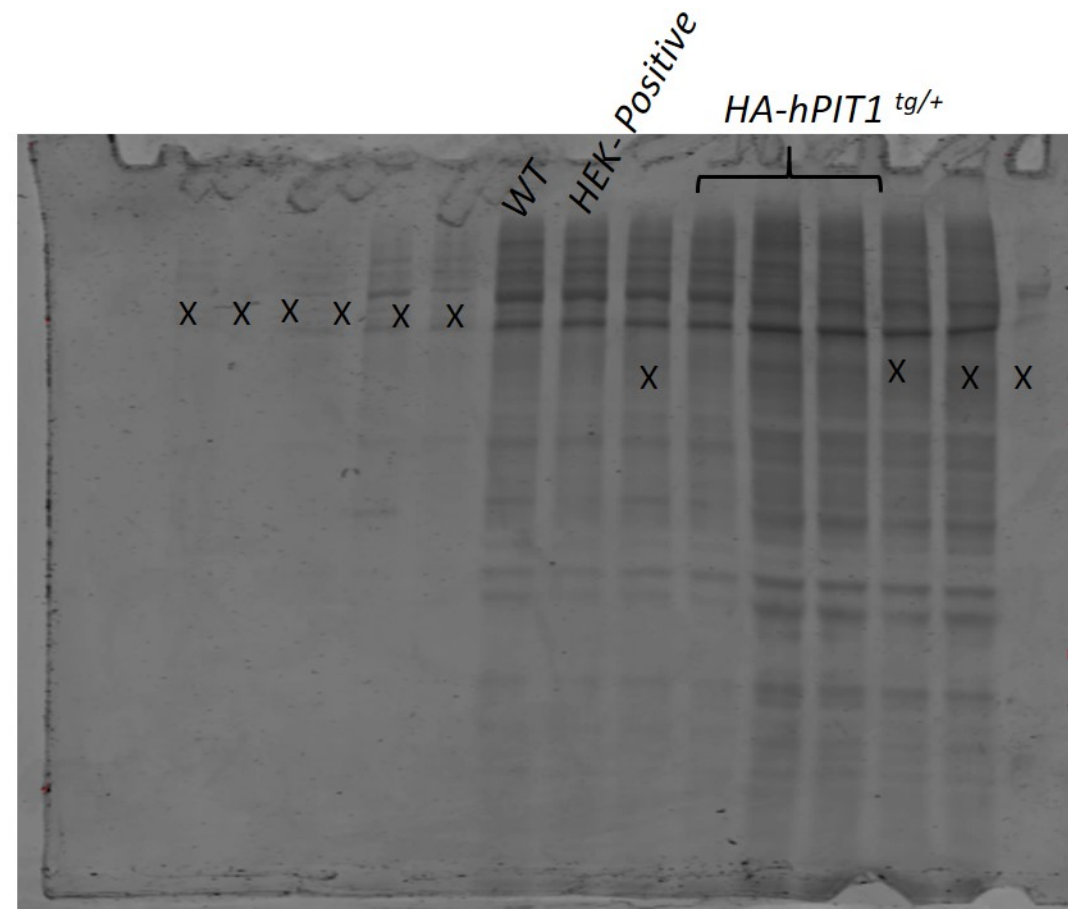
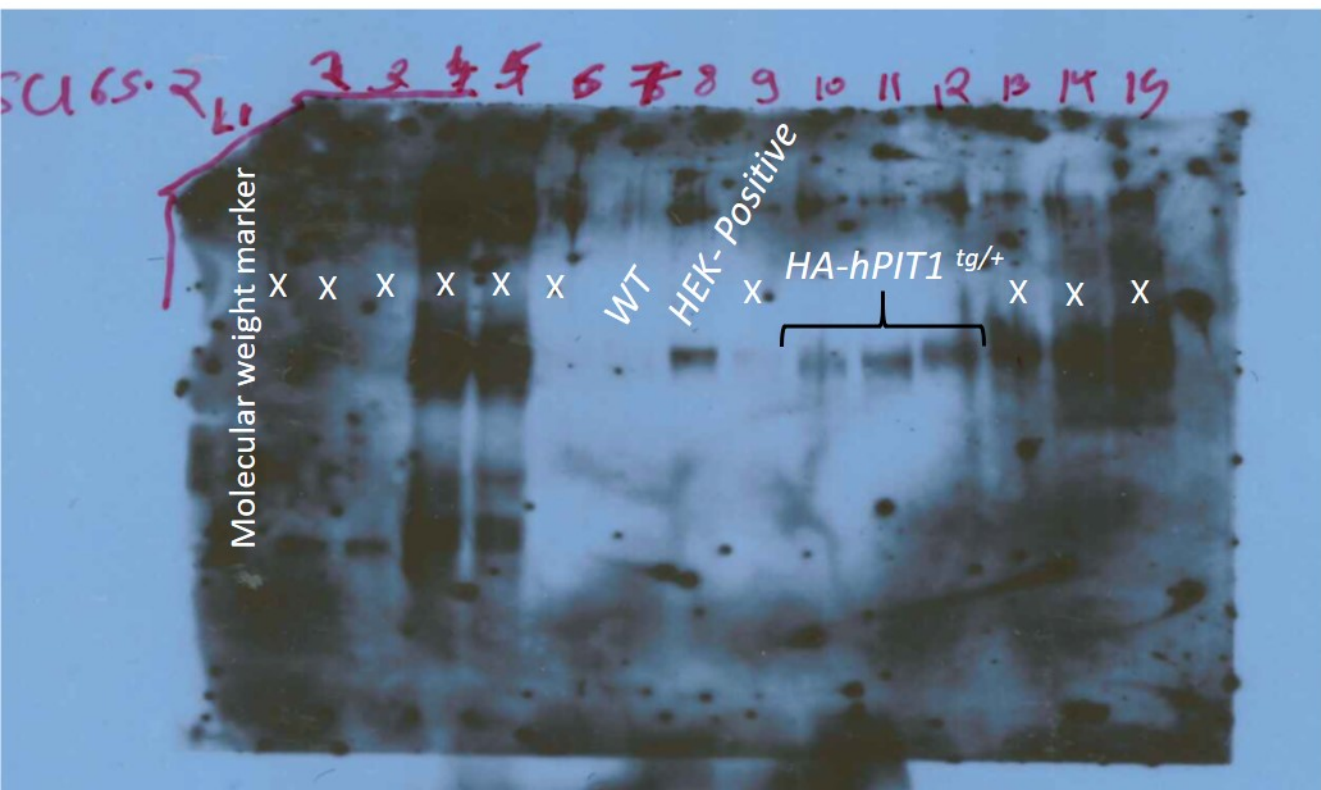
Cre-recombinase (823,824) at 400 bp



gΔLSL (880, 883) at 450 bp

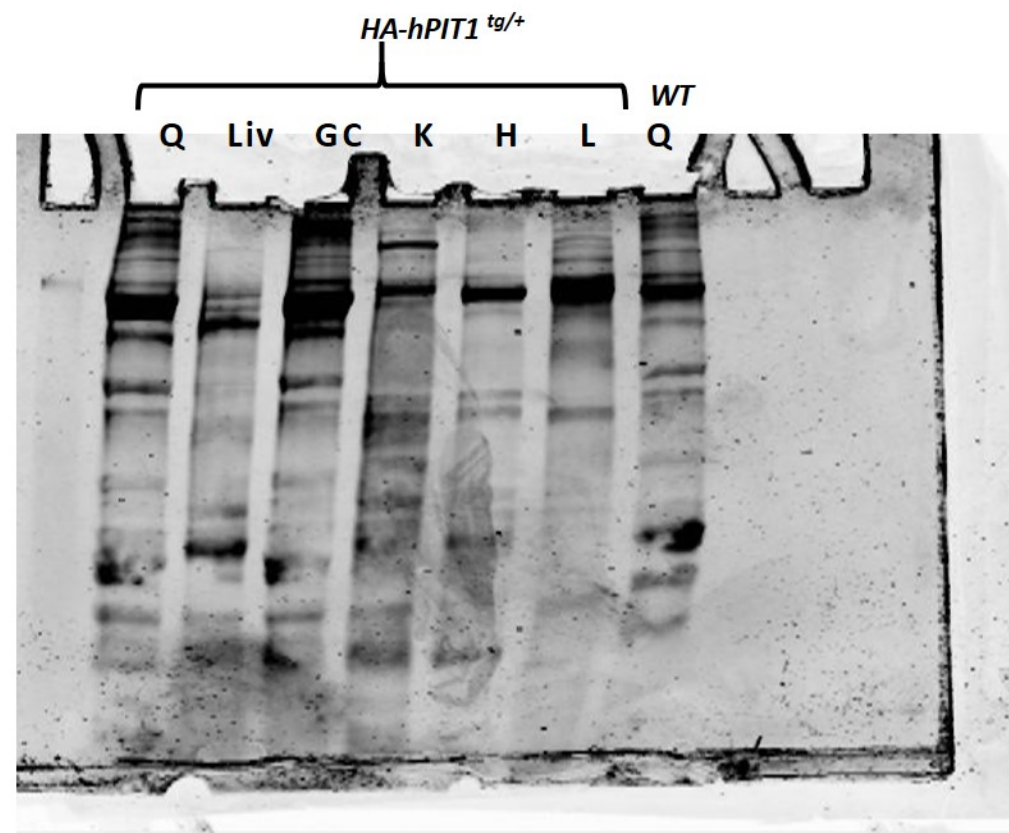
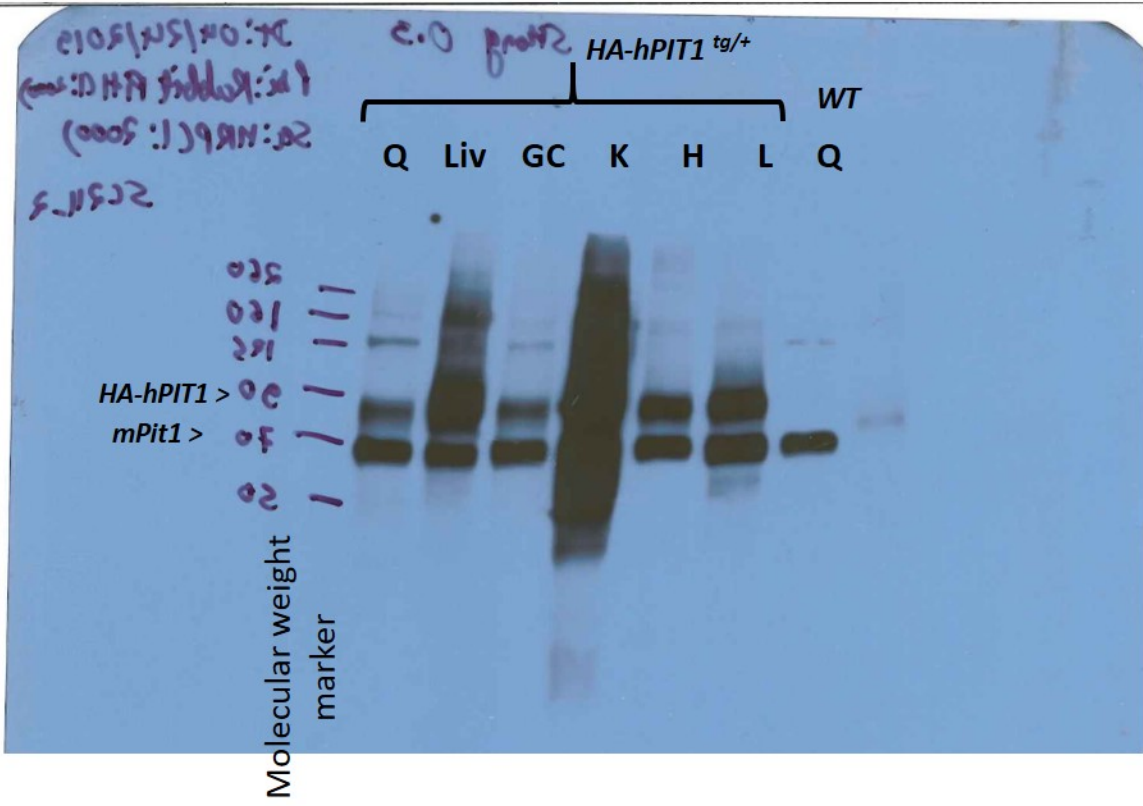


Method to capture image: Scanned autoradiography film
Figure panel: Figure 2(B)



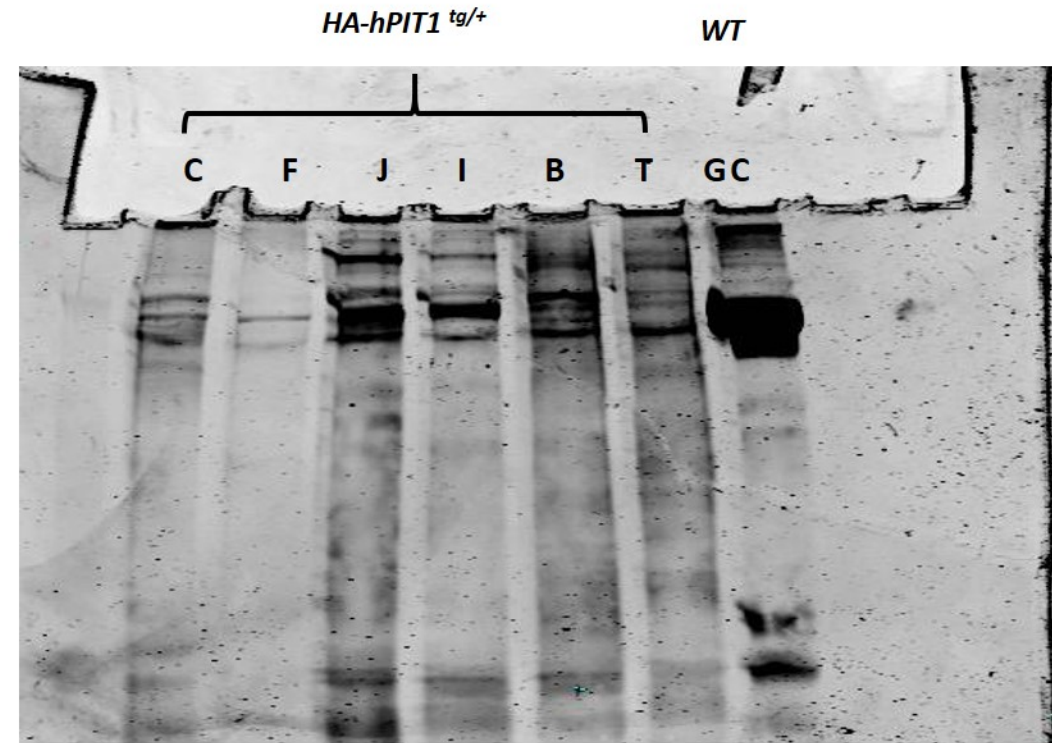
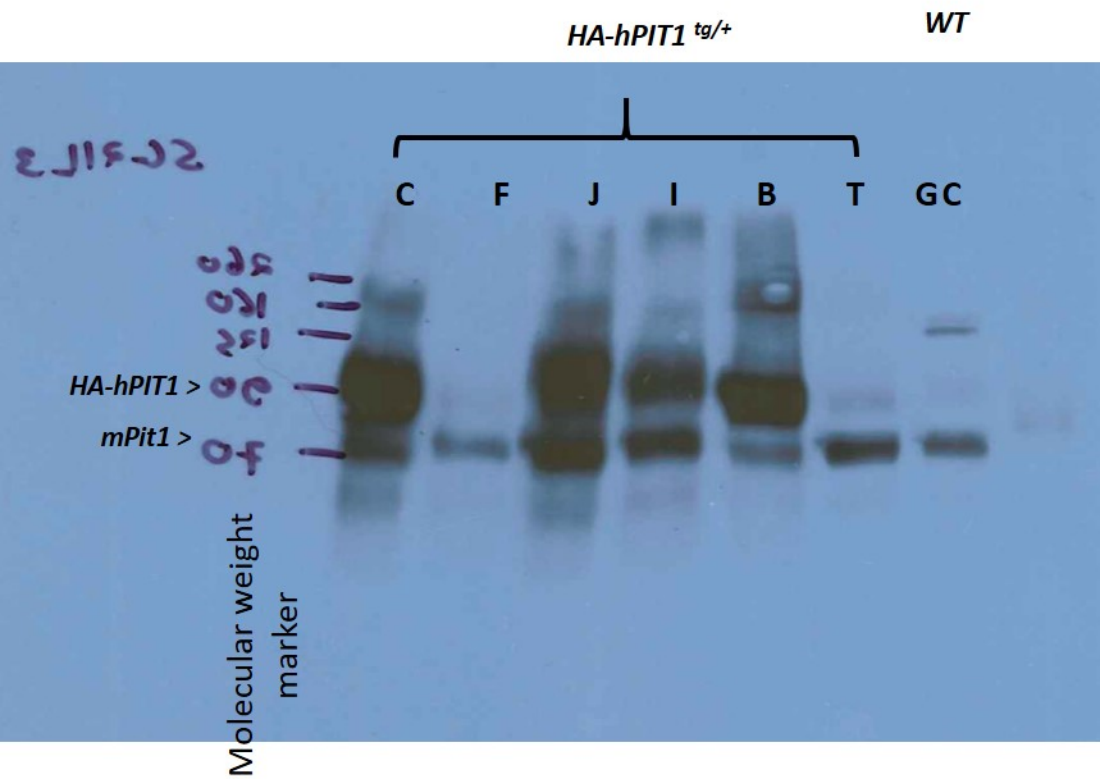
Method to capture image: Scanned autoradiography film

Figure panel: Figure 2(D)



Method to capture image: Scanned autoradiography film

Figure panel: Figure 2(D)



Method to capture image: Scanned autoradiography film

Figure panel: Figure 2(F)

	HA-hPIT1 ^{tg/+}		WT		HA-hPIT1 ^{tg/+}		WT	
IP: anti-HA	-	+	-	+	-	-	-	-
IB: anti-Pit1	+	+	+	+	+	+	+	+

	HA-hPIT1 ^{tg/+}		WT		HA-hPIT1 ^{tg/+}		WT	
IP: anti-HA	-	+	-	+	-	-	-	-
IB: anti-Pit1	+	+	+	+	+	+	+	+

