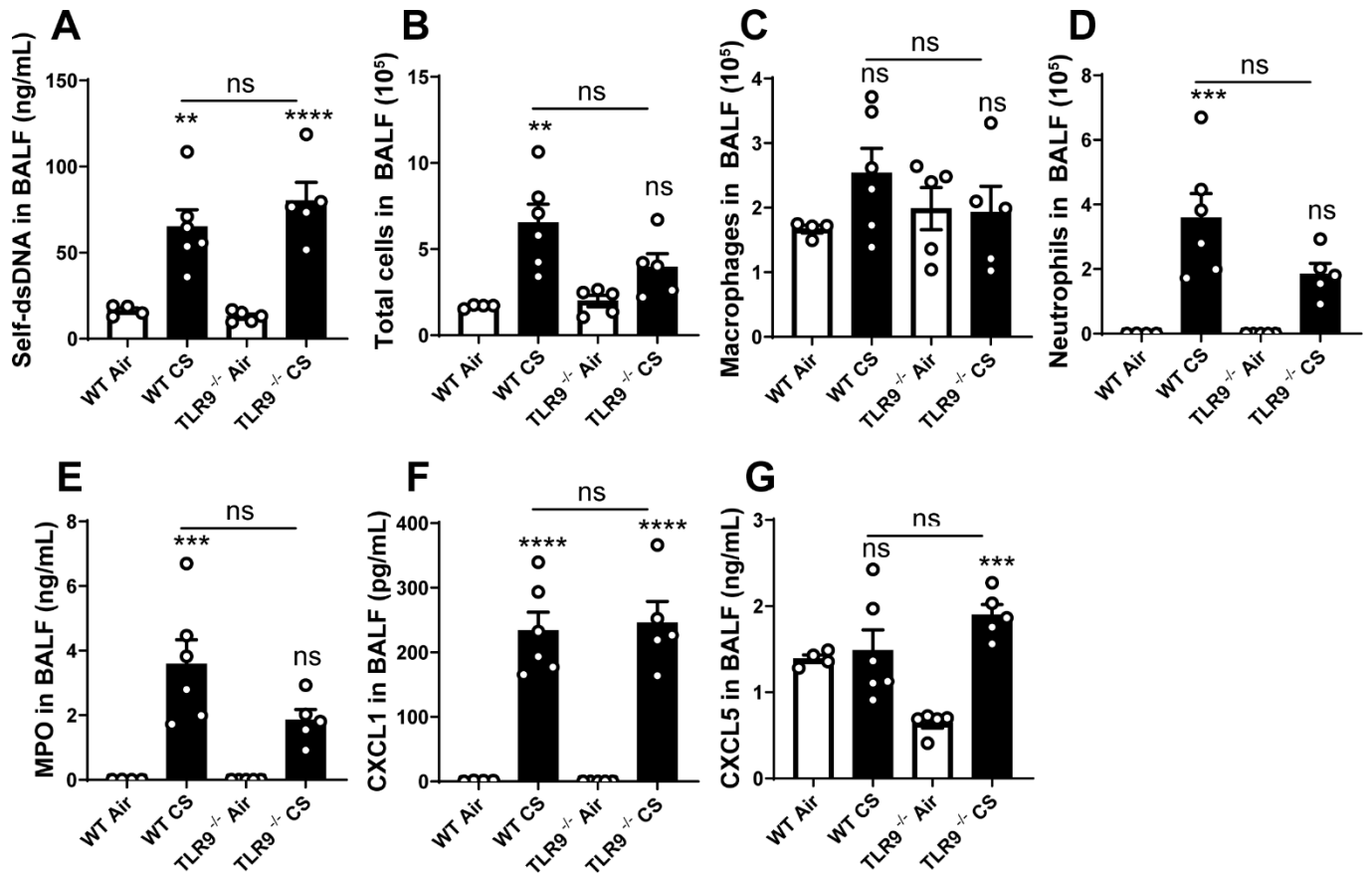


Self-DNA release and STING-dependent sensing drives inflammation to cigarette smoke in mice

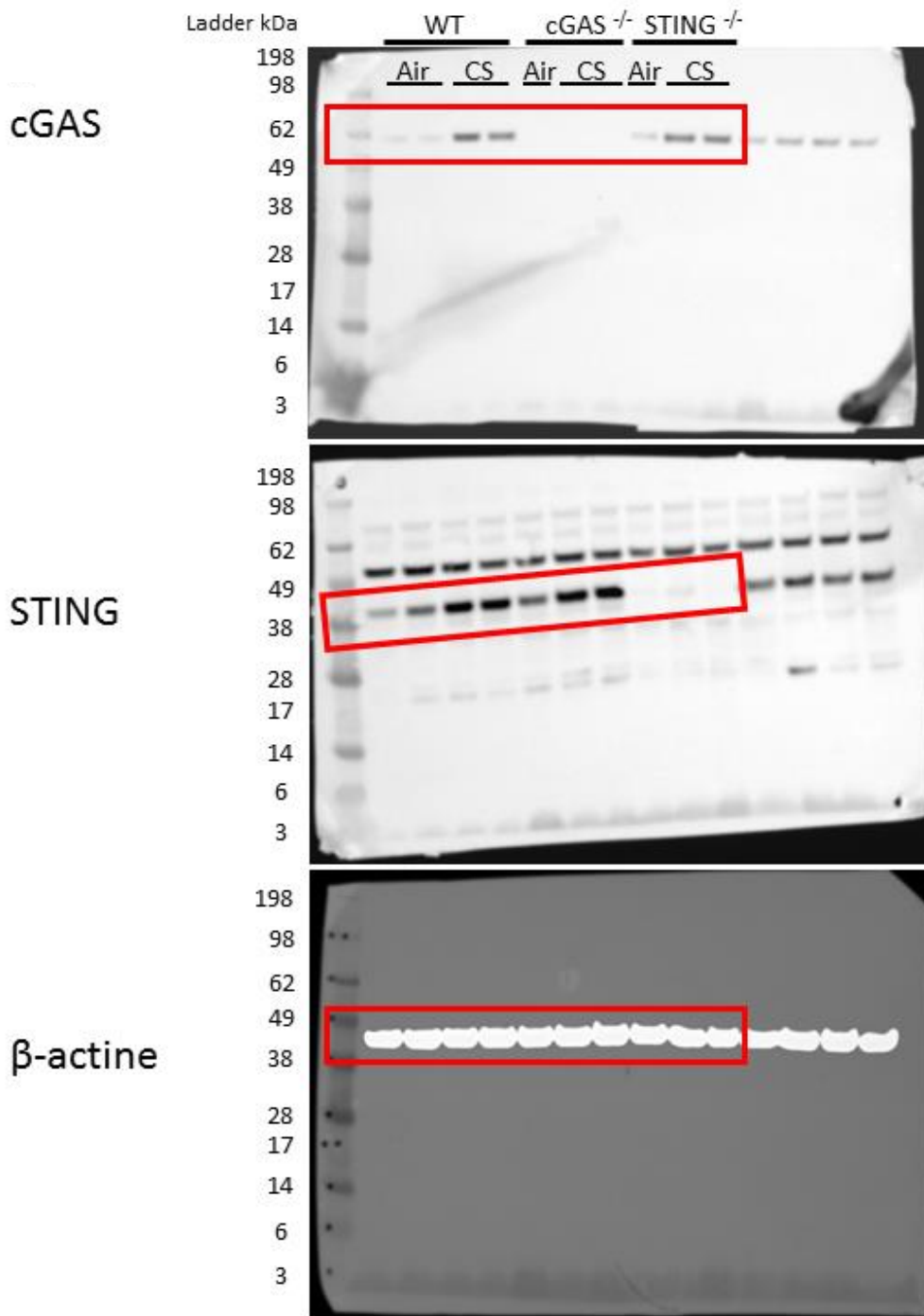
Mégane Nascimento¹, Aurélie Gombault¹, Norinne Lacerda-Queiroz¹, Corinne Panek¹, Florence Savigny¹, Malak Sbeity¹, Manon Bourinet¹, Marc Le Bert¹, Nicolas Riteau¹, Bernhard Ryffel¹, Valérie F.J. Quesniaux¹ & Isabelle Couillin¹

¹University of Orleans and CNRS, INEM-UMR7355, Orleans, France

Supplementary Figure S1



Supplementary Figure S2



Supplementary Figure Legends

Supplementary Figure S1 DNA sensor TLR9 is not required in CS-induced lung inflammation. Self-dsDNA (**A**), total cells (**B**), macrophages (**C**) and neutrophils (**D**) recruited in BALF after CS exposure are shown. MPO (**E**), CXCL1 (**F**) and CXCL5 (**G**) levels measured in BALF are shown.

Supplementary Figure S2 Uncropped immunoblots shown in Fig.2C.